

Nearby places for food and entertainment

- There is a shopping mall (悠方购物中心) at the Xinjiangwan City Station (新江湾城站) of Line 10 Subway, very close to the hotels. There are many options for food at the underground level, as well as a fancy grocery store (盒马生鲜).
- There is a famous food and bar area at Da Xue Road (大学路), close to the old campus of Fudan University. One could take line 10 (for less than 10 min) and get off at Jiangwan Stadium Station (江湾体育场站), exit 9. You could also see a very large underground shopping/dining area inside the subway station on your way out. Recommended food includes Cantonese restaurant (潮界), the documentary film "Life in a Skewer" experience shop(记录片《人生一串》体验店), and Japanese food(秋田食堂).



Sightseeing spots in Shanghai

Shanghai is one of the most international cities in China. Here are a few recommended sites to visit on Wednesday afternoon:

- **The Bund 外滩**

The Bund is a 1.5-kilometre-long waterfront area and a protected historical district in central Shanghai.



On the eastern side of the Bund lies the Huangpu River – the largest river flowing through downtown Shanghai, also known as Shanghai's mother river.

To the river's west are 52 gothic and baroque-style buildings that once housed old Shanghai's financial institutions and trading companies.

- **The museum of Art Pudong 浦东美术馆**



Museum of Art Pudong (MAP) is primarily set out to present world-class exhibitions to its

audience as well as showcasing domestic artists. Also you could enjoy the sights of The Bund as the museum is located at the heart of Lujiazui.

Opening time: 10:00 a.m-21:00 p.m. Latest entry at 20:00 p.m.

Current Exhibition:

1) Ages of Splendor: A History of Spain in the Museo del Prado

2024-04-23 - 2024-09-01 more details:

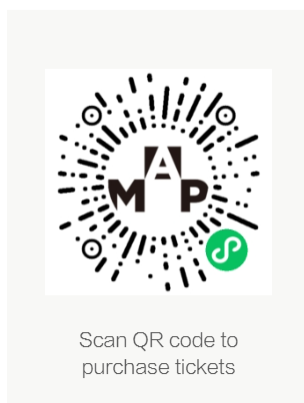
<https://www.museumofartpd.org.cn/en/exhibitiondetail?id=153>

2) Fantastic Visions: 100 Years of Surrealism from the National Galleries of Scotland 2024-02-02 - 2024-08-31

More details: <https://www.museumofartpd.org.cn/en/exhibitiondetail?id=149>

3) Xu Bing: Gravitational Arena 2022-08-12 - 2024-08-01

More details: <https://www.museumofartpd.org.cn/en/exhibitiondetail?id=92>



Scan QR code to purchase tickets

- **Shanghai Museum on People's Square** 上海博物馆人民广场馆

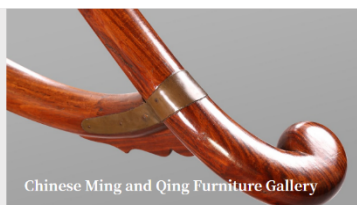
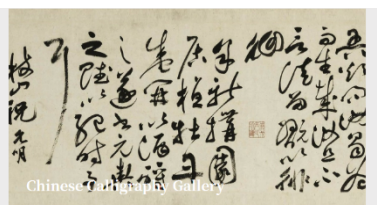
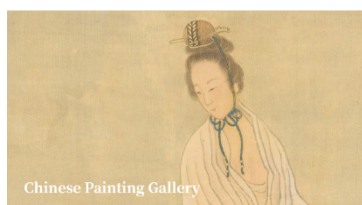
Opening time: 9:00 a.m. ~17:00 p.m.

Latest entry at 16:00, closed on Mondays (except national holidays)

Reservation is required.

No. 201 Ren Min Da Dao, Huangpu District, Shanghai

Permanent Galleries:



1) Chinese Painting Gallery

There are more than 120 masterpieces of Chinese painting dating from the Tang Dynasty (618-907) to the Modern Times shown in the 1,200 m² Chinese Painting Gallery. The seven sections of the exhibition reveal chronologically the age-old tradition and profound

foundation of Chinese painting.

More details: <https://www.shanghaimuseum.net/mu/frontend/pg/article/id/RI00004004>

2) Chinese Calligraphy Gallery

In a space of 600 square meters, the Chinese Calligraphy Gallery displays about 60 masterpieces of Chinese calligraphy in five sections, which tracks chronologically the development of Chinese calligraphy art.

3) Chinese Ming and Qing Furniture Gallery

The Chinese Ming and Qing Furniture Gallery is set with more than 100 masterpieces of Ming and Qing furniture in a space of 700 square meters, which shows the artistic style and heyday of Chinese furniture-making during Ming (1368 - 1644) and Qing (1644 - 1911) dynasties. Meanwhile, two scenarios of a reception room and a study room of the Ming-Qing period reconstructed in the gallery demonstrate how the traditional furniture were used and arranged.

More details: <https://www.shanghaimuseum.net/mu/frontend/pg/article/id/RI00004006>

• Yu Garden 豫园

Yuyuan Garden, located in the northeast of Huangpu district's old town, dates back over 400 years to the Ming Dynasty (1368-1644), serving as the private retreat for the Pan family. Encompassing 20,000 square metres, it weaves a labyrinth of gardens, pavilions, lakes, rocks, bridges, dragon walls and traditional architecture.



The garden's exquisite design, scenic beauty and classical architecture distinguish it as a Shanghai must-see. Renowned as "the crown of gardens in southeast China", Yuyuan Garden has welcomed leaders and celebrities from around the world.

Its six scenic areas boast over 40 ancient structures, showcasing the concept of "imagining the big from the small".

• City walk 城市漫步

Hengshan Road - Fuxing Road Historical and Cultural Area covers six historic street areas. The Hengfu Block boasts 49 historical buildings, showcasing modernist, English, French, and Spanish

architectural styles.



The Wukang Building, designed by Laszlo Hudec and completed in 1924, is a protected historic residential building located in the western part of the former French Concession. The eight-storey building is designed in the style of the French Renaissance and is the oldest veranda-style apartment building in Shanghai. (Address: No 1850, Middle Huaihai Road, Xuhui district, Shanghai)

- **Shanghai Xintiandi 上海新天地**

Shanghai Xintiandi is a vibrant and trendy area located in the city's core. The streets are filled with a mix of international and local brands, boutiques, and galleries. The area is also famous for its diverse culinary options. At night, Xintiandi is a lively entertainment district. Bars, clubs and live music, making it a great place to party or simply enjoy the city's nightlife.