

CATHI

Marie Curie Initial Training Network

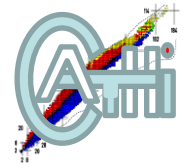
Cryogenics, Accelerators and Targets at HIE-ISOLDE

Yacine Kadi (EN)

Kick-off Meeting, 23 May 2011

CATHI

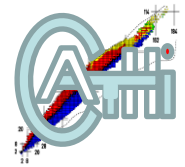
Project Structure & Organisation



- + People and project structure
- + CATHI Sharepoint site

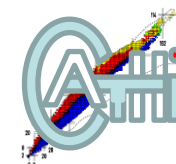
<https://espace.cern.ch/Marie-Curie-CATHI/default.aspx>

Research Training Themes (20 Fellows over 4 years)

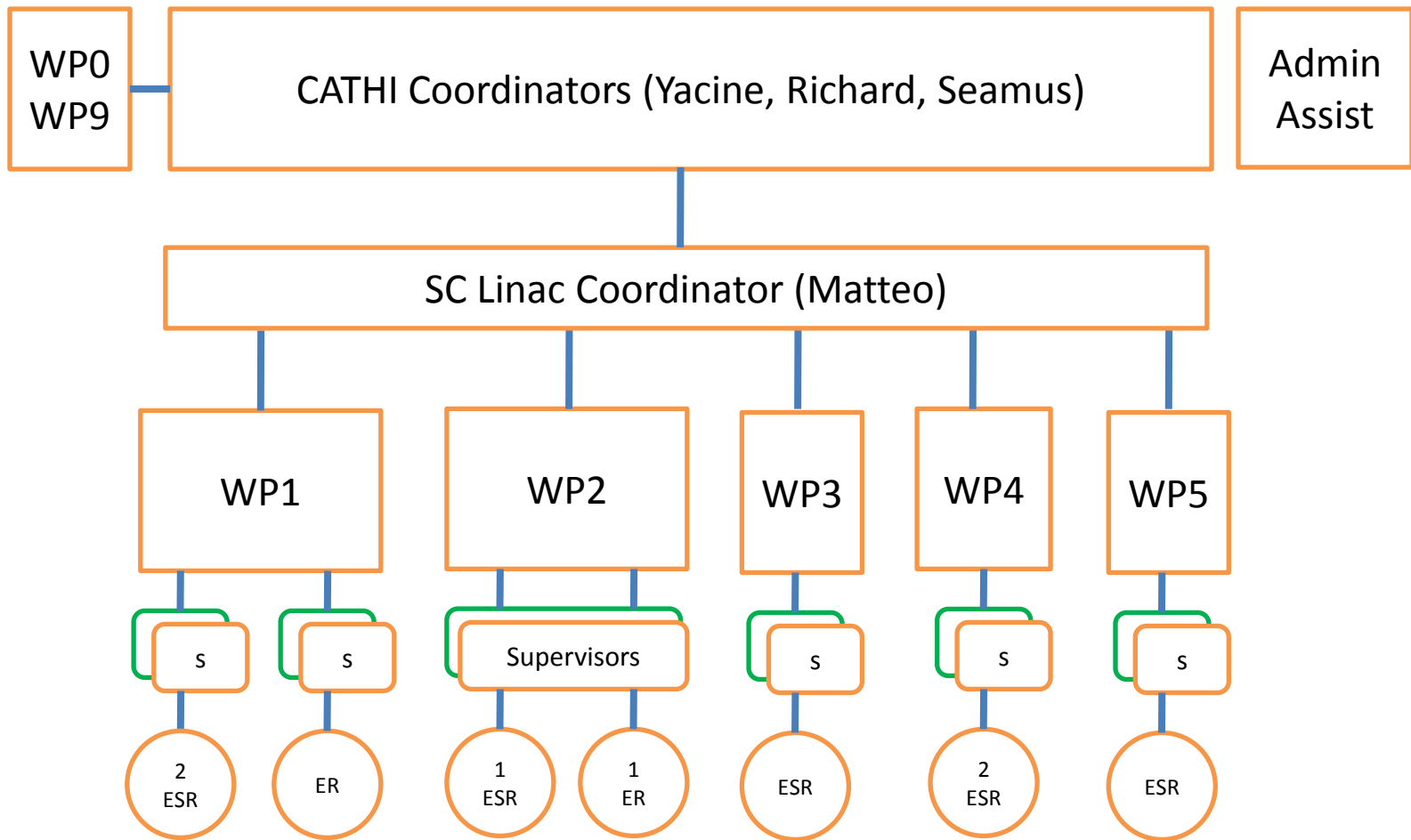


HIE-ISOLDE Subsystem	Research Training Theme	No. ESR	No. ER
I. SC Linac	1. Super-Conducting Cavity Development and tests	2	1
	2. Beam Instrumentation Development	1	1
	3. New Magnets	1	-
	4. Linac Integration and Innovative Alignment Method	2	-
	5. Linac Commissioning	1	-
II. Design Study for intensity upgrade	6. New Target and Front-End Design	5	-
	7. ISOLDE target area and Class-A Laboratory Upgrade	2	-
	8. Beam Quality Improvements	2	1
III. Safety	9. General Safety and Radiation Protection Implications Studies	-	1
	TOTAL	16	4

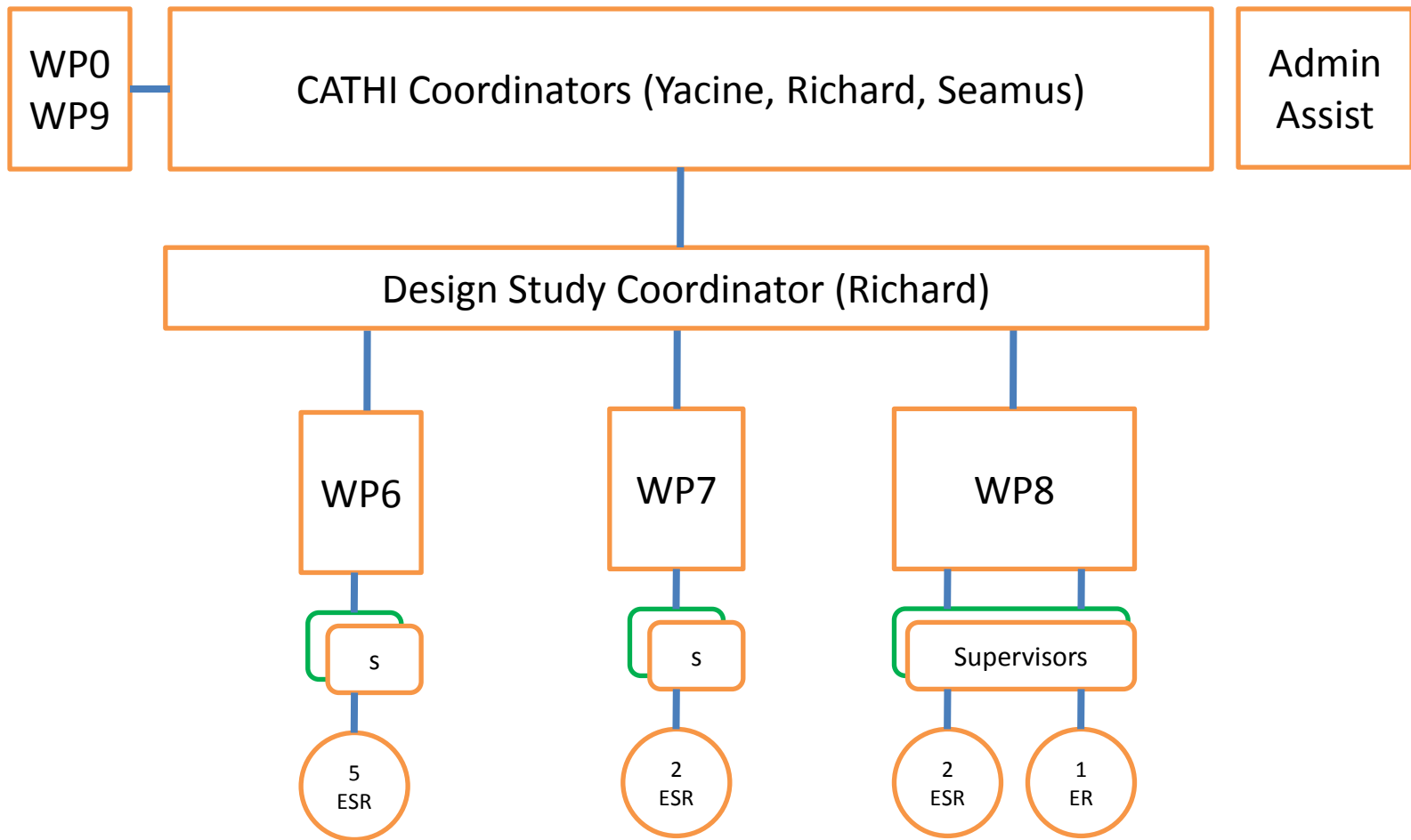
List of Participants



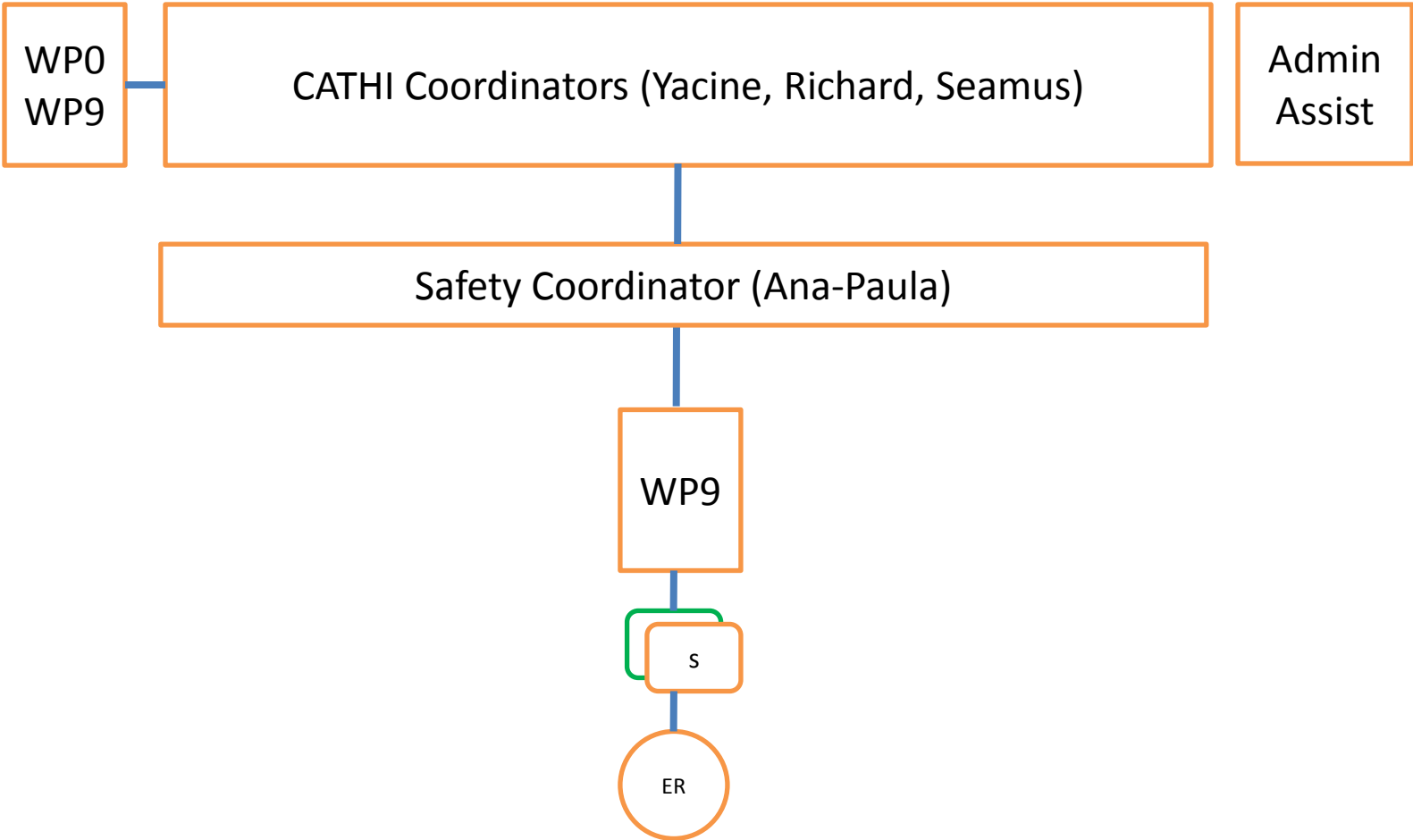
	Private Sector Participant	Country	Legal Entity Name	Department /Division/ Laboratory	Scientist-in-charge
Full Network Partner					
1		Switzerland	European Organization for Nuclear Research	Engineering Dept.	Yacine Kadi
Associated Partners					
1	√	Italy	CINEL		Sergio Bongiovanni
2		France	CNRS/IN2P3	IPN-Orsay	Sebastien Bousson
3		France	CNRS/IN2P3	LPC- Caen	Nigel Orr
4		UK	Cockroft Institute	Accelerator Science and Technology Center	Peter McIntosh
5		France	GANIL	Technique de la Physique	Pierre Delahaye
6		Italy	Istituto Nazionale di Fisica Nucleare	Laboratori Nazionali di Legnaro - LNL	Gianfranco Prete
7		Germany	Max Planck Institute	MPI- Heidelberg	Klaus Blaum
8		USA	Michigan State University	National Superconducting Cyclotron Laboratory	C. Konrad Gelbke
9	√	UK	Scientific Magnetics		Peter Penfold
10	√	France	SDMS		Pierre Maccioni
11	√	Italy	SIDEA		Marco Mauri
12		Finland	University of Jyvaskyla	Physics Dept.	Ari Jokinen
13	√	Italy	ZANON		Ettore Zanon



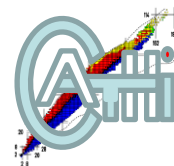
 Secondment



 Secondment



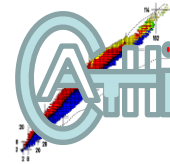
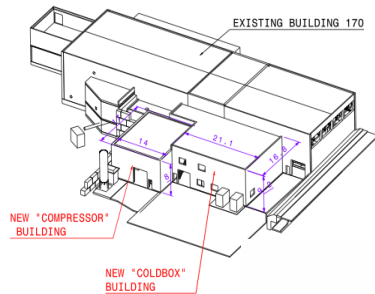
 Secondment



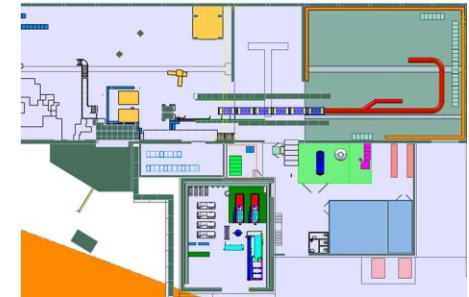
CATHI Organisation

- + Our project is organised around a Sharepoint site
<https://espace.cern.ch/Marie-Curie-CATHI/default.aspx>
- + All CATHI members will have access
- + Please use it, rather than email attachments, to store and share all information
- + There is a good search facility !

- + Parts are public (to show the world our results)
- + Parts are private to all CATHI members
- + Personal information is restricted access



Thank you very much for your
attention



HIE-ISOLDE web site -> <http://hie-isolde.web.cern.ch/hie-isolde/>

CATHI-ITN web site -> <https://espace.cern.ch/Marie-Curie-CATHI/default.aspx>