

OEC Integration Workshop

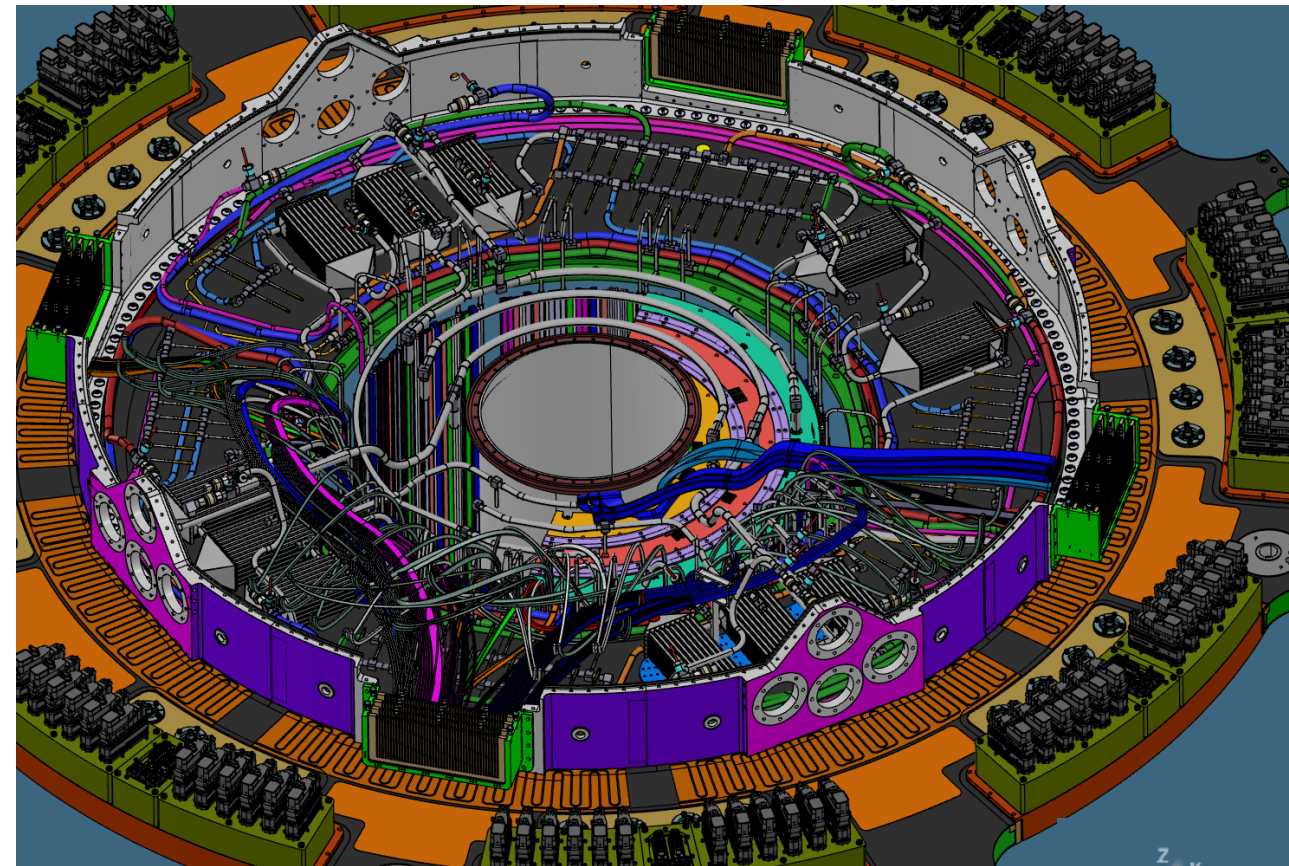
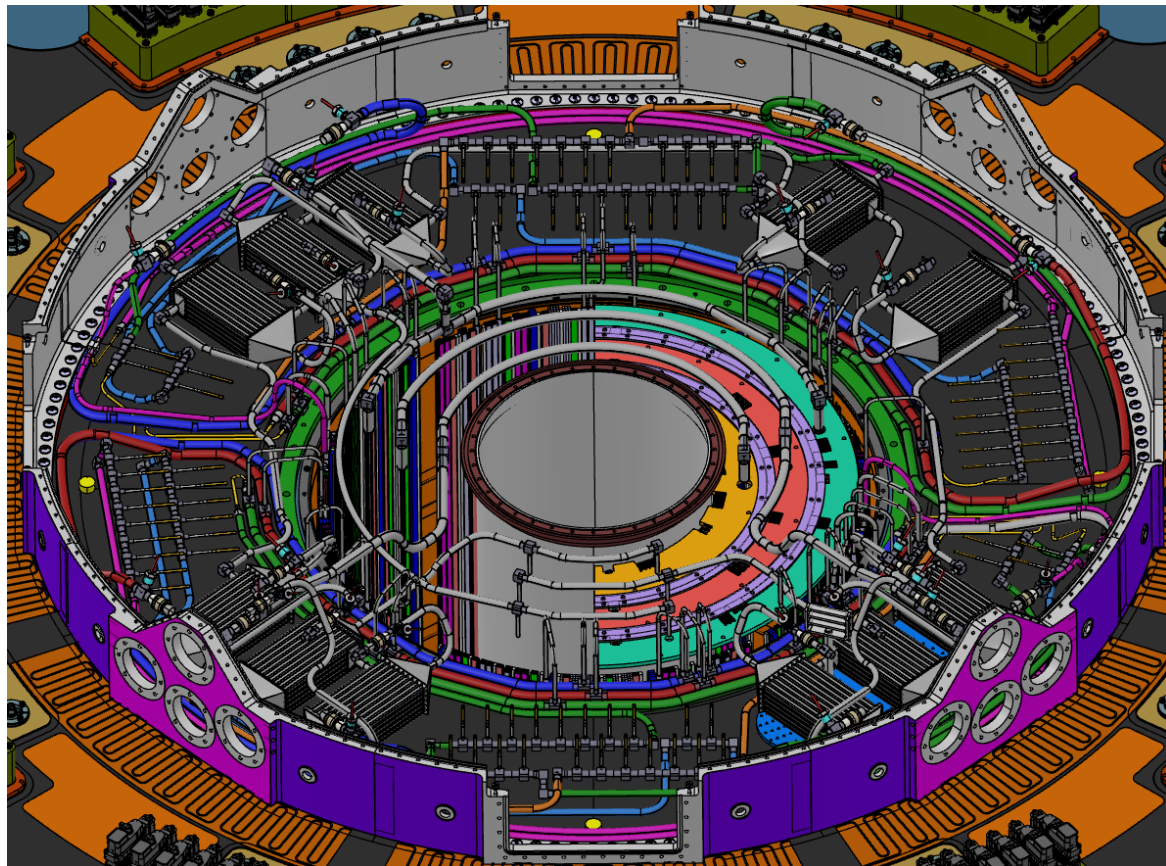
Cable dress up and PP1 finalization

INFN-LNF

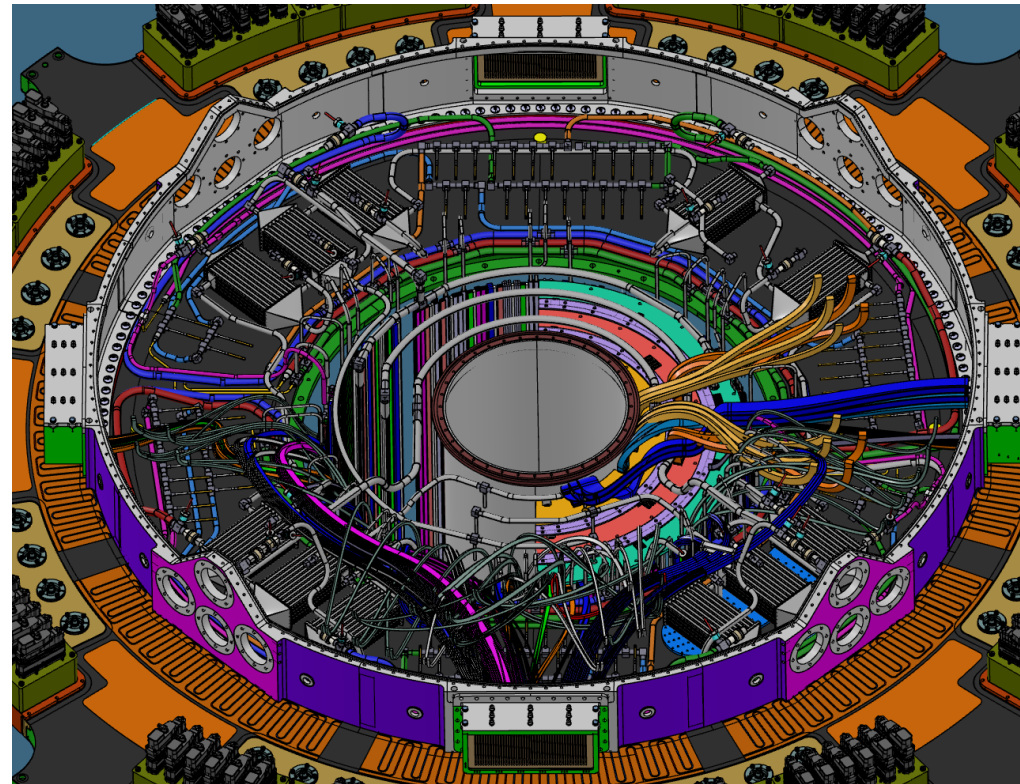
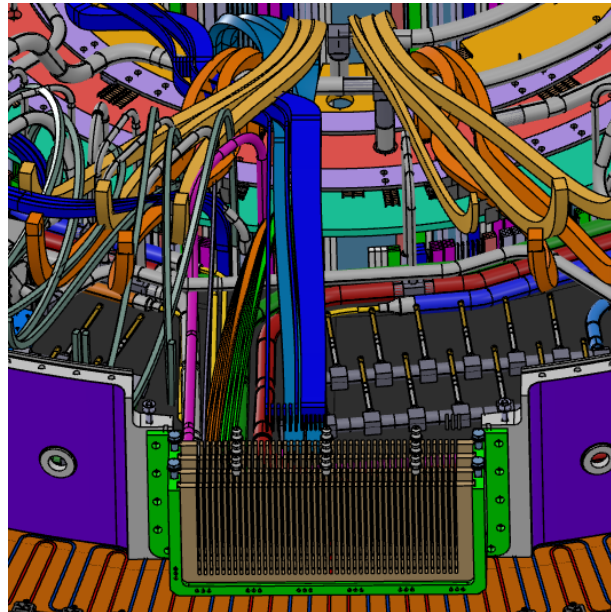
F. Rosatelli

2024-02-01

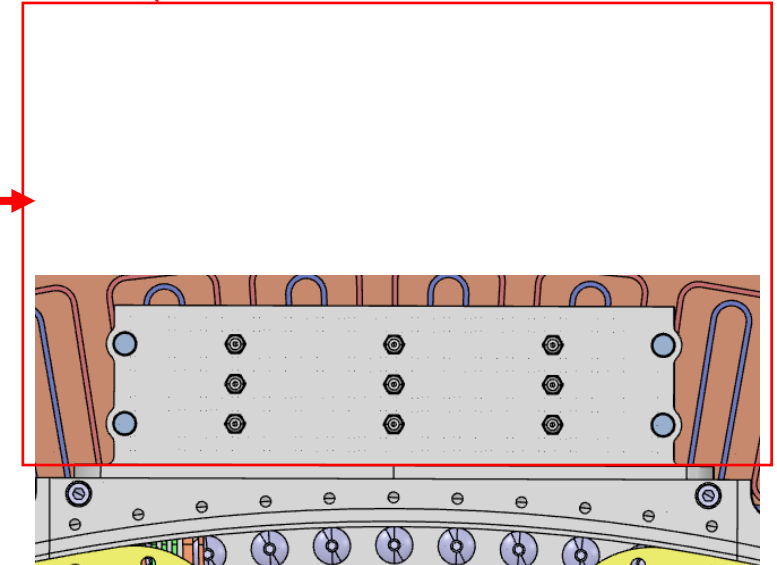




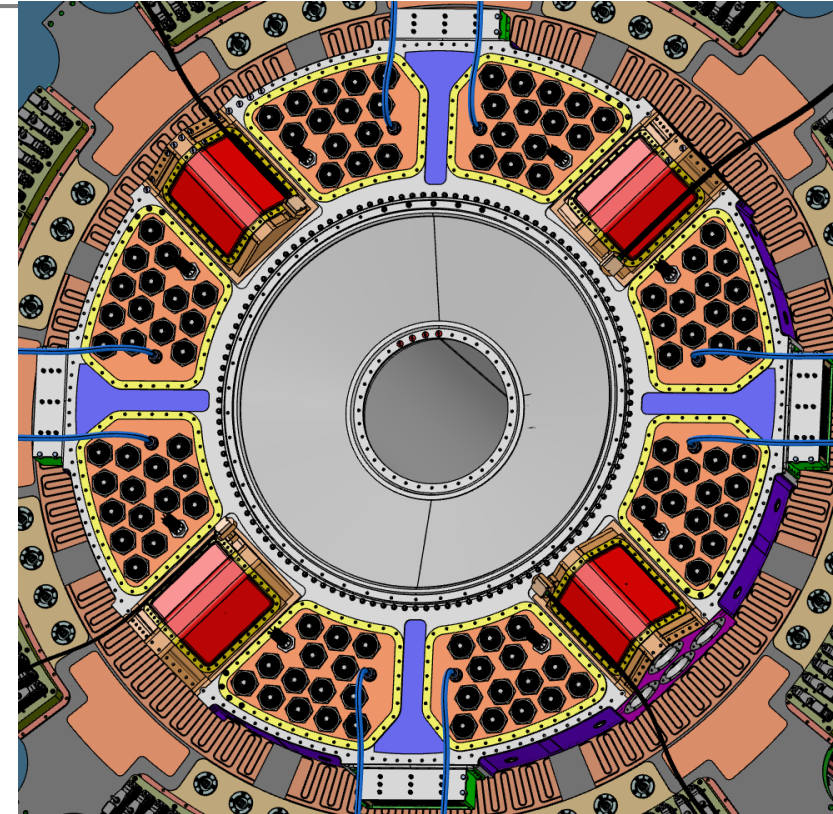
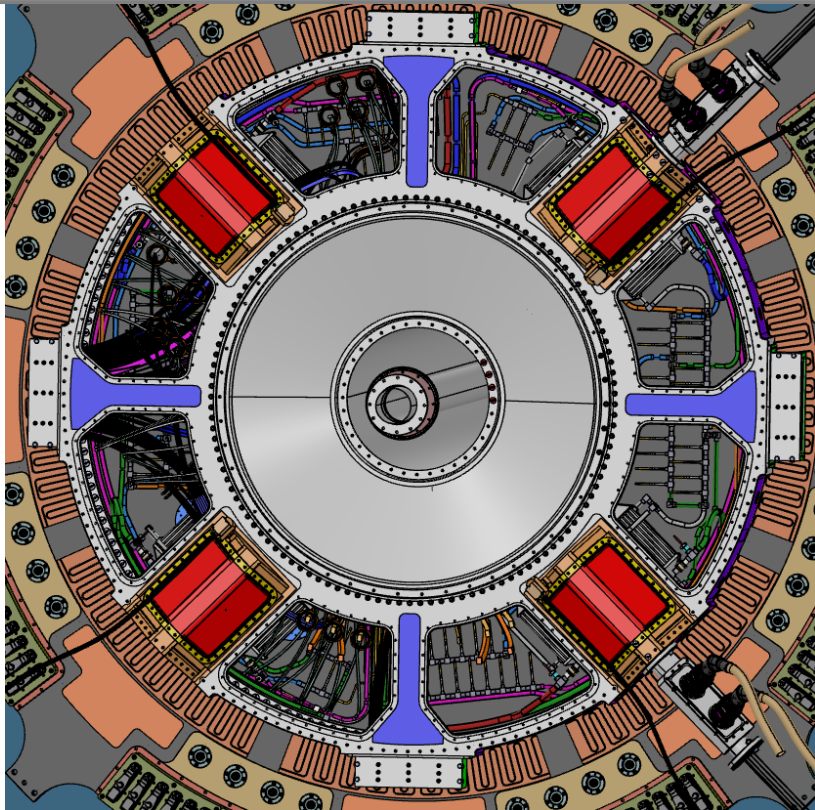
- **Manifold installed, welded and tested. IST present.**
- **Dressing OB and EC data cables from trolley to PP1 data feedthrough.**
- **Power cables stored on services trolley.**



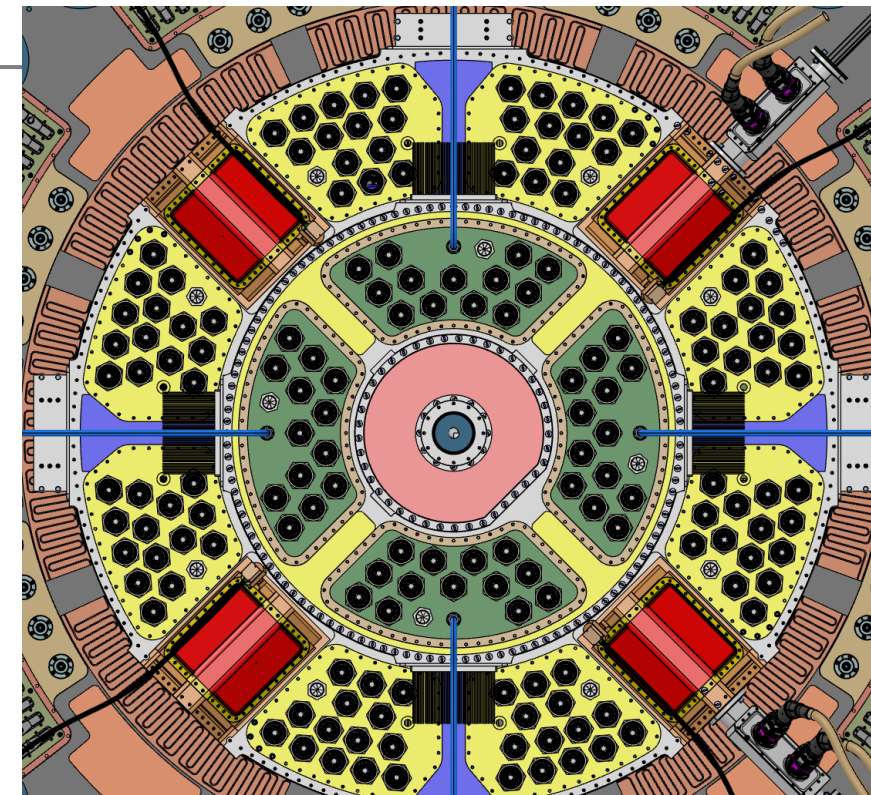
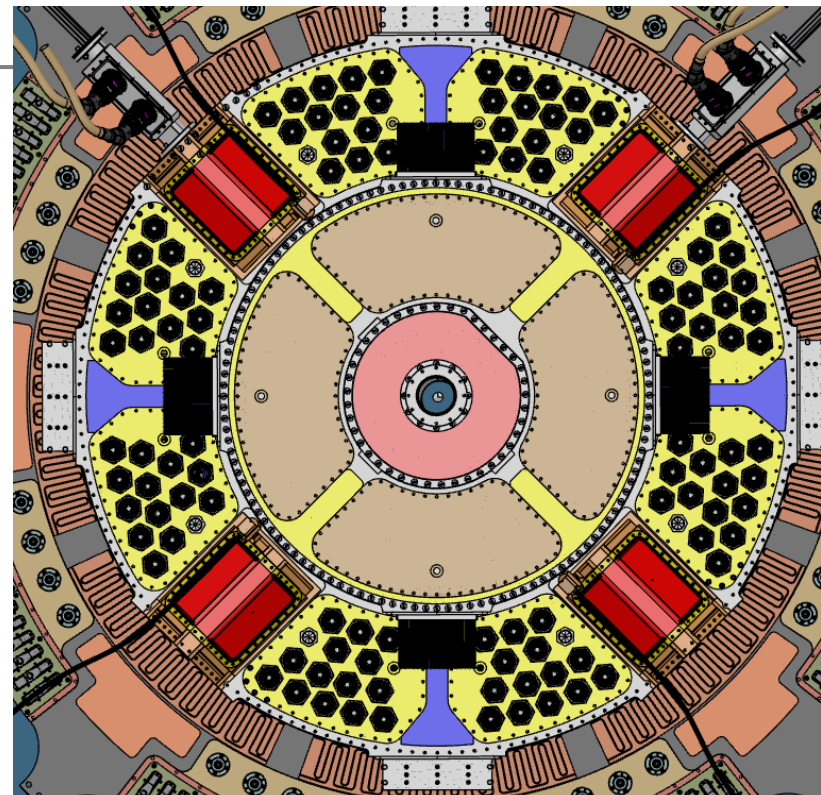
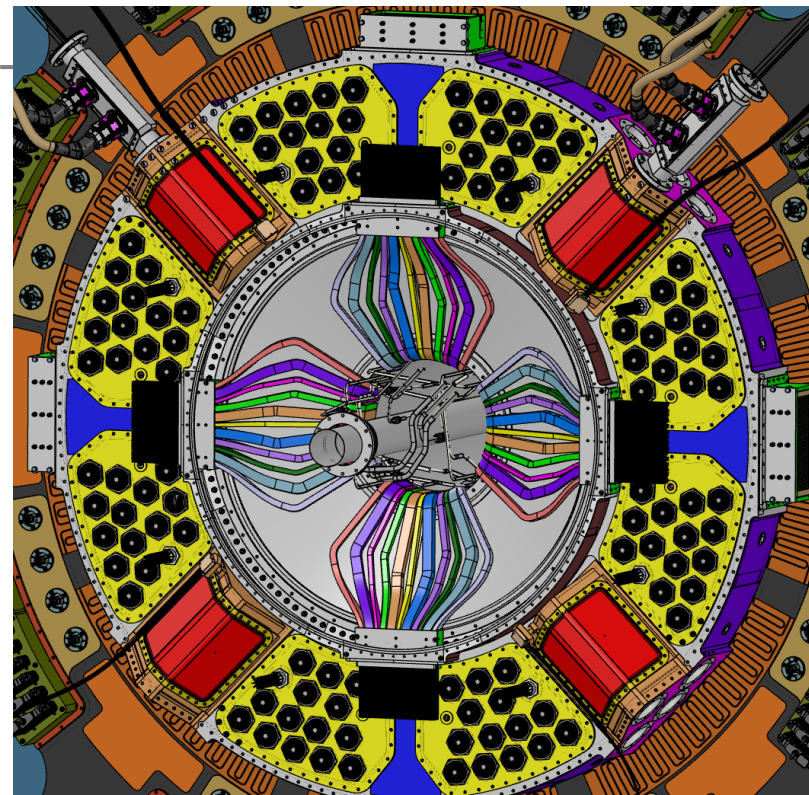
Chamber



- Filling DFTs with Araldite 2011 and silicon compound.
- Leak test of DFTs using a chamber (TBD). If needed, a rework it's possible.
- Dressing OB and EC power and environmental cables. They placed temporarily inside PP1 volume.



- **Glue interface flange on IST**
- **Install outer flange.**
- **Install conical flange on interface flange.**
- **Blank flanges for leak test**
- **Panel connectorization**
- **Leak test on two octant panel after electrical test**



- IS piping installed
- Dressing data to DFT
- Power dressed and clamped temporarily inside PP1 IS volume.
- Filling IS DFTs with Araldite and silicon compound.
- Leak test DFT using a chamber . If needed, a rework it's possible.
- Instal IS flanges and blank flanges for leak test IS
- Panel connectorization and electrical test.