

Excursion on Wednesday afternoon at the Mont Saint-Michel

• Departure

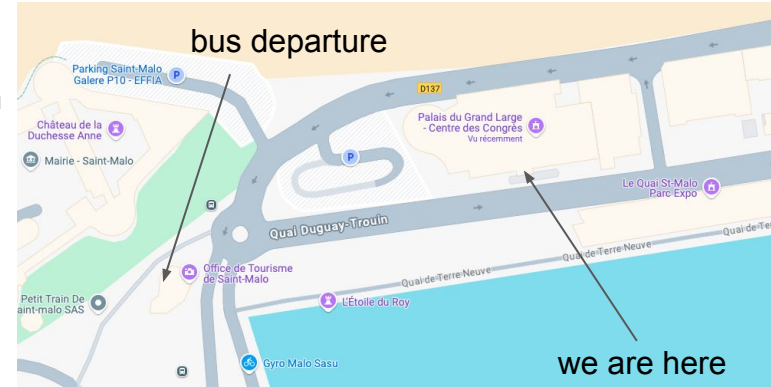
- 1-hour lunch after the end of the morning session
- Departure at **1:15PM** → no time to go back to your hotel, no possibility to leave stuff in the congress place during the afternoon
- Divide into two groups (two buses) → 1-hour drive

• Arrival

- Parking P7 for buses
- 300m walk to the shuttle stop → **go directly there**
- Approx. 15 min drive to the bottom of the Mont (⚠ possible queues)
- We meet our guides at the bottom of the Mont
- Divide into three groups ⊕ **get your entrance tickets**

• Visit

- Walk to the top of the Mont **directly** (approx. 15-20 min)
- **Entrance slot: 3:15PM**
- 1h30 guided tour
- It will probably rain → be prepared (shoes, clothes, etc.)

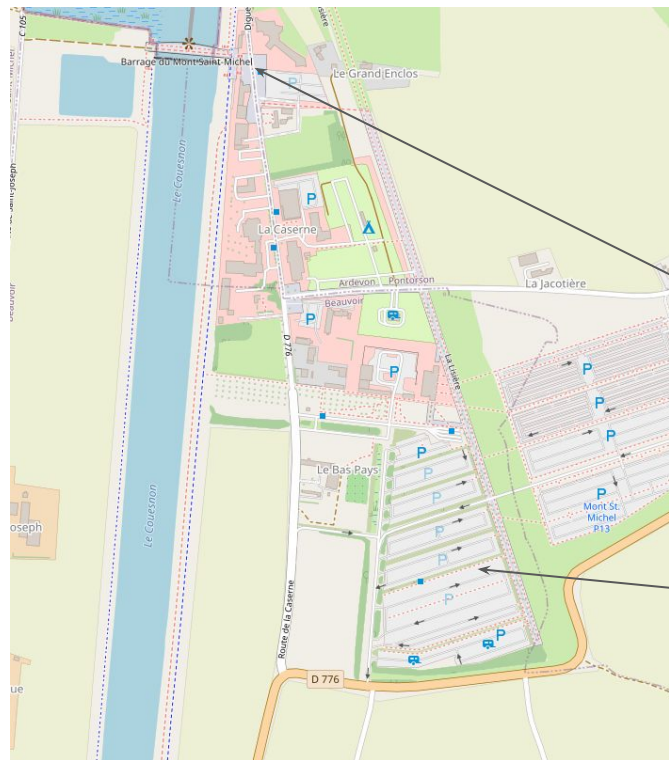


• Return trip

- Be back at the bottom of the Mont **at the latest at 5:30PM**
- Take the shuttle back to the parking lots
- **Buses will leave at 6:00PM from P7**

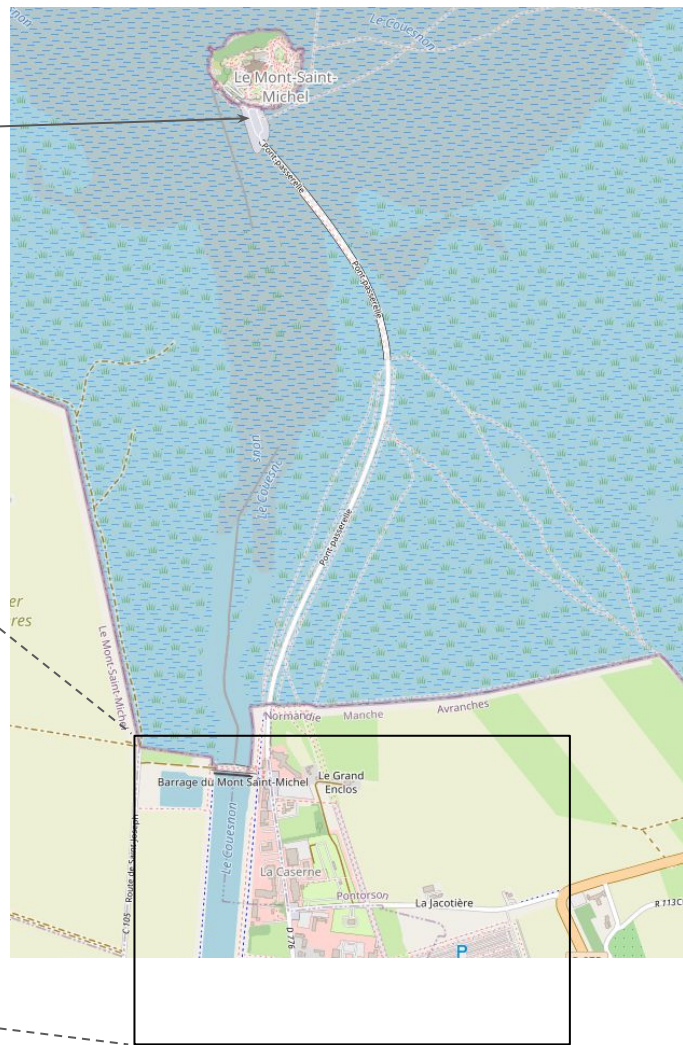
Mont Saint-Michel Maps

Get tickets
Return shuttle
(before 5:30PM)



Shuttle stop

P7 (arrival)



Abbey entrance with your guide

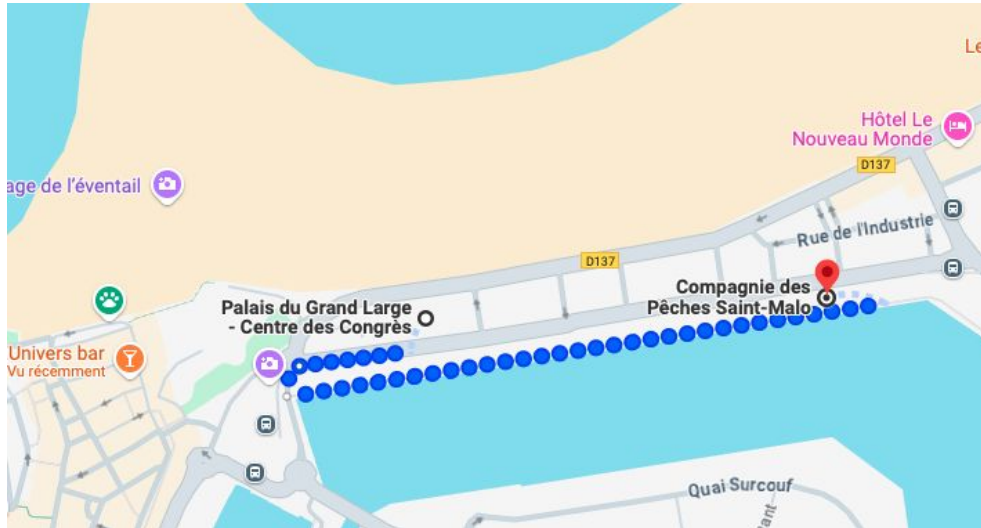


Get tickets

Return shuttle (before 5:30PM)

Conference dinner

- Wednesday evening (8pm):
 - Compagnie des Pêches Saint-Malo



Questions and Answers sessions for young researchers

- Tuesday evening and Thursday evening (9pm-10:30pm):

- Informal conversations, follow-ups on the presented results
- Students, young researches and speakers only
- Drinks provided
- Please post your questions in advance in this anonymous google doc:

https://docs.google.com/document/d/1mGSErlpVmWdwTpZja2IWEmAhQqv5Qz40ssUxgu_-qKc/edit

- Hotel l'Univers, 12 place Chateaubriand

