

# AWAKE Collaboration Board Meeting

11<sup>th</sup> – 13<sup>th</sup> March, The Spine (Liverpool) and Daresbury Laboratory



## Meeting Venue

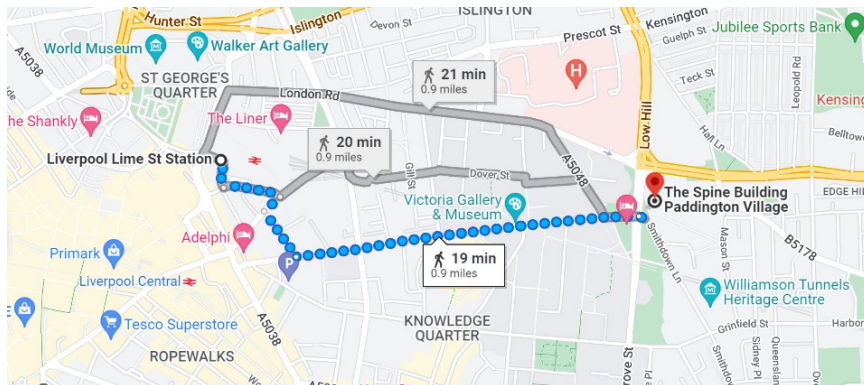
### The Spine

Liverpool  
L7 3FA



The meeting will take place on floor 12, space four & five.

The Spine is approximately 19 min walk from Liverpool Lime Street Station.



## Overview of Activities

### Monday 11<sup>th</sup> March, The Spine, Liverpool

Light Lunch and Registration from **12:30**

Meeting Start **14:00**

Dinner at The Philharmonic Dining Rooms from **19:00**

### Tuesday 12<sup>th</sup> March, The Spine, Liverpool

Meeting Start **9:00**

### Wednesday 13<sup>th</sup> March, Daresbury Laboratory (DL)

Bus transfer to DL, pick up **8:30**

Meeting Start **9:30**

Meeting End **14:20**

Lab Visit (optional) from **14:30**

## Overview of Programme

- AWAKE External Review Summary
- Run 2b
- Run 2c/d
- Simulations
- Collaboration Board

# AWAKE Collaboration Board Meeting

11<sup>th</sup> – 13<sup>th</sup> March, The Spine (Liverpool) and Daresbury Laboratory



## How to get to Liverpool

### By train to Liverpool Lime Street

- 35 minutes from Manchester
- 1 hour 20 minutes from Leeds
- 3 hours 30 minutes from Glasgow
- 2 hours from London
- 1 hour 40 minutes from Birmingham

### By car

From M6 on to M57, M62 or M58  
Motorway connections put the majority of UK cities within a four-hour drive time.

- 45 minutes from Manchester and Chester
- 2 hours from Birmingham
- 3 hours 40 minutes from Glasgow
- 4 hours from London



# AWAKE Collaboration Board Meeting

11<sup>th</sup> – 13<sup>th</sup> March, The Spine (Liverpool) and Daresbury Laboratory



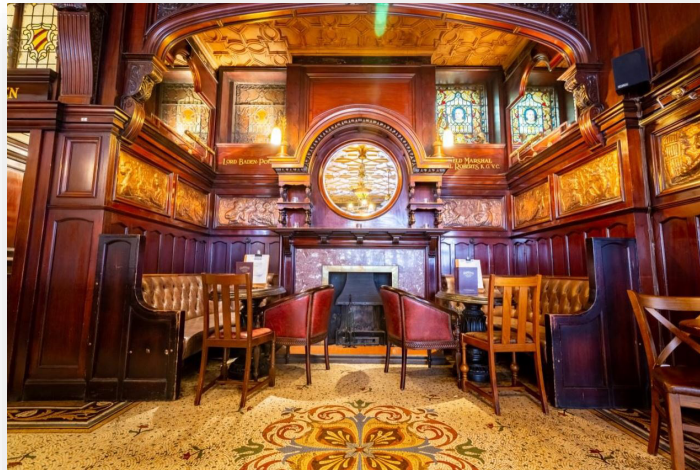
## Dinner

**Monday 11<sup>th</sup> March, from 19:00**

### **The Philharmonic Dining Rooms**

36 Hope Street  
Liverpool  
Merseyside  
L1 9BX

Built between 1898 and 1900, the flamboyant pub is a dazzling showpiece built in the style of a gentleman's club.



## Accommodation

A list of hotels in walking distance to the event venue can be found on the event's Indico Page:

<https://indico.cern.ch/event/1368982/page/3219-1-accommodation>

*Attendees to the AWAKE Collaboration Meeting can benefit from a special rate at the Novotel Liverpool Paddington Village (next to The Spine building).*

*The list of hotels is based on proximity to the venue, it is not exhaustive, and it is provided only to facilitate your search of accommodation.*



# AWAKE Collaboration Board Meeting

11<sup>th</sup> – 13<sup>th</sup> March, The Spine (Liverpool) and Daresbury Laboratory



**We look forward to meeting you in  
Liverpool!**

## Daresbury Laboratory

On **Wednesday 13<sup>th</sup> March**, the meeting will be held at the Daresbury Laboratory, followed by an optional tour of the labs in the afternoon.

### **Bus transfer (one-way only)**

Liverpool to Daresbury  
Pick up at Novotel Liverpool Paddington Village  
**Bus will leave at 8:30!**

Please organise your own transport in the afternoon.

## Contact in case of Emergency

Carsten +44 79 73 24 79 82

Ricardo +44 75 85 34 49 34