

Welcome

Logistics



WLCG/HSF Workshop, DESY-Hamburg, May 13-17 2024

Welcome



© NDR / Georg Wendt/dpa, Foto: Georg Wendt/dp

Welcome



© Hamburger Abendblatt / mago/osnapix

© NDR / Georg Wendt/dpa, Foto: Georg Wendt/dp

DESY Hamburg

Laboratory

- Once the home of the [HERA](#) e^+p collider, Deutsches Elektronen-Synchrotron, [DESY](#), is in the west of Hamburg, in Bahrenfeld
- The lab hosts two of the largest [ATLAS](#) and [CMS](#) groups, a [Belle 2](#) group, and many smaller on site Particle Physics experiments including [ALPS](#)
- There is also an increasingly large [photon science](#) presence on site: [PETRA III/IV](#), [XFEL](#), [CFEL](#) as well as plasma wakefield research [FLASH\(Forward\)](#)



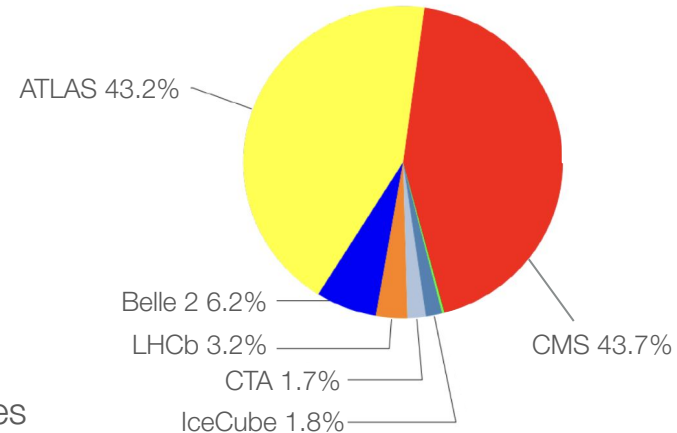
DESY Hamburg

IT Division

- Data Grid Centre: significant [computing resources](#) - tour? Tell Tigran!
 - Tier-2 centre for ATLAS & CMS; ~25PB of disk / 20k cores
 - Belle 2 Raw Data Center
 - Long established Analysis Facility: NAF
- In-house expertise in storage: [dCache](#), [workshop](#) next month at DESY
 - Experience with tape systems, recent provision of resources to the LHC experiments
- Recent highlights include:
 - Migration of tape libraries from OSM to CTA
 - DESY OS: RedHat but also Alma Linux
 - Successful in latest Data Challenge, incl. transfers with tokens
- Regular discussions on computing matters at DESY, including [workshops](#) with focus on sustainability and efficient usage of resources



Last 6 month CPU Hours per VO

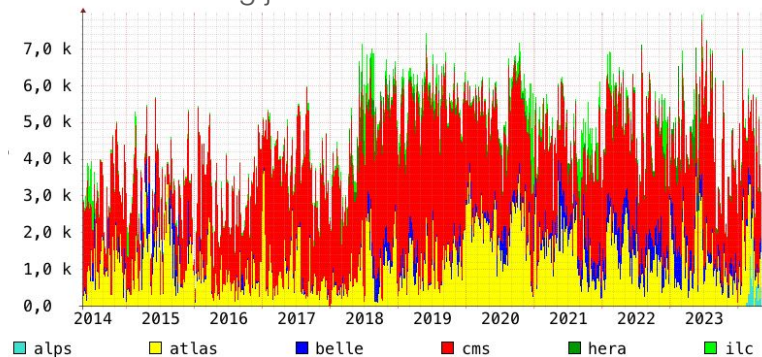


DESY Hamburg

National Analysis Facility

- NAF: National Analysis Facility at DESY since 2007
 - One of the first analysis facilities, 1.5k potential users
 - Complementing significant, co-located Grid resources
 - Data centric approach for data intensive analysis
 - German HEP community and Global Belle 2 community
 - Close connection to data on dCache storage and local developers

Running job slots on the NAF since 2014



National Analysis Facility

Interactive login systems

ssh, Jupyter, remote desktop and interactive machines for rapid development, incl. GPUs

Batch system for scale out

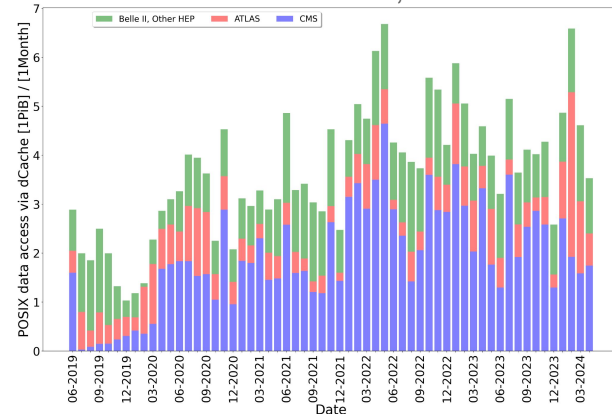
Up to 10k cores, occupancy ~75%, access to data stored on DESY Grid dCache, global software via CVMFS

Scalable shared file system

1.5 PB local storage based on GPFS: high performance I/O; Local grid storage also directly accessible via NFS

Additional services: Jupyter notebooks; Support of container environments; Specialised hardware (including high-RAM, GPUs, ..); R&D of new formats for Columnar analysis. Support with close link between the users and admins

NFS traffic to/from NAF, PiB/month



Welcome to DESY

Some basics for the week

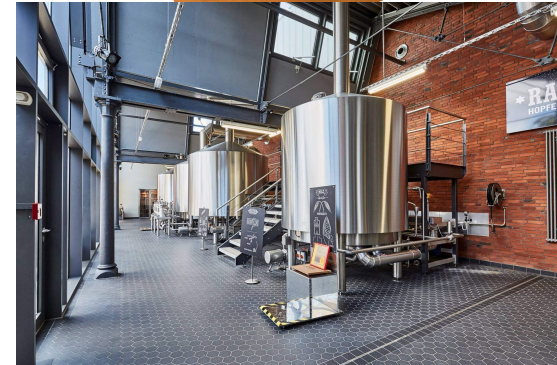
- The plenary sessions are all here in the Hoersaal
 - *WLCG parallel sessions are also here*
 - *HSF parallel sessions are in Seminar Room 4 (here on Weds)*
 - *The WLCG CB is in Seminar Room 1 on Weds*
- Coffee breaks for everyone will upstairs in the Foyer, at 10:30-11:15 and 15:30-16:00 each day
- A photograph will be taken at the start of the coffee break on Wednesday afternoon, just outside
- Lunch is at the canteen, just a short walk to the kitchen/tent outside. Additional warm options, salad bar available in the canteen building
 - *We should go no earlier than 12:45 please!*
 - *The canteen is **CASH ONLY***
- WiFi - eduroam is available everywhere, or you can also use the guest network “Science-Hotspot”



Registration

Don't forget to pick up your bag

- We have 155 people registered on site as well as more than 100 people registered for online participation
- If you have not yet registered upstairs please do so, it will be open again in the coffee breaks this afternoon and tomorrow morning
 - *Please check your receipt for any corrections or additional information needed, we can usually accommodate changes and make a new one for you*
- If you have registered for the Brewery Tour, please pay your 20€ in cash at the registration desk to receive your ticket
 - *Tickets are allocated alphabetically, across the two tours, at 19:00 and 19:30, feel free to swap!*



Key Locations on Campus



Seminar Room 4



Seminar Room 1

Hostel office: Building 6

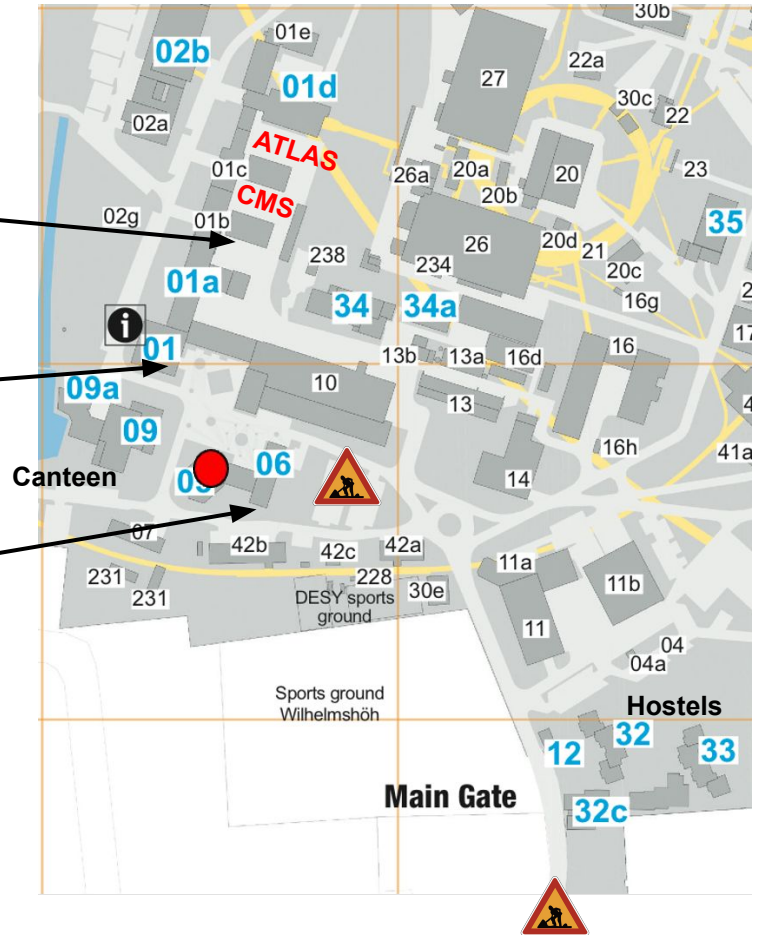
Check-In 15:00 / Check-Out 10:00

Payment can be done in two ways:

- Receive bill by e-mail and pay via bank transfer within 14 days
- Pay by credit card day before or of departure, 9.30-12:00

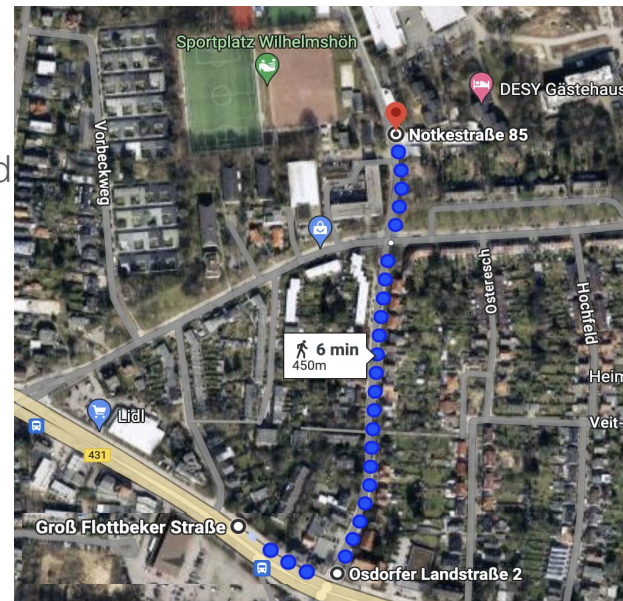
Please check the billing address as it cannot be changed later

- The hostel bill will be sent automatically via email after your stay



Getting Here and Around

- Bus 1 can be taken from Altona or S-bahn Othmarschen as described on the Workshop page (["How to get to DESY"](#))
 - However, the bus route is currently changed. Instructions on best way to get to DESY are [here](#), the correct stop is "Groß Flottbeker Straße":
 - Alternatively, arrive on Number 2 or 3 bus, enter DESY via the side entrance, stop: "Luruper Chaussee/DESY", close to Mercure hotel:



- We recommended that you download the [hwv App](#) if you will be using public transport while in Hamburg
 - Tickets can be bought via the app, which can also provide timetables and connection details
 - Tickets can also be bought at larger bus stops and all S-bahn stations, but not all bus stops have a ticket machine, and cash payments are no longer accepted on buses

Social Programme

Reception and Dinner

- There is a reception at DESY tonight at 18:00, in the canteen
 - Welcome drinks and finger food - you'll probably still want dinner, see [list on the indico](#) for recommendations
- The dinner on Wednesday evening at [Altes Mädchen](#), at a local craft beer brewery, [Ratsherrn](#), in the [Sternschanze](#) district
 - Dinner is at 20:00, drinks included 19:00 until 23:00
 - The two brewery tours are at 19:00 and 19:30
 - Some buses will leave DESY at 18:15 sharp to arrive at the Altes Mädchen no later than 19:00
 - Please wear your badge so we can detect freeloaders!
 - Make your own way back to DESY or hotels via public transport (the S-bahn is only a few minutes away)



Finally

We're here to help

- Workshop secretaries Carolin and Sabine can help you with any queries you might have
- There is a restaurant list (and craft beer bar list) on the indico, as well as things to do in Hamburg, on-site information and so on.. There's even a running route as was requested (though you probably won't see me on it)
- You can always ask me or any other *DESYaners* for advice on, places to go, things to see and do, where to eat, which bars to go to etc
- Nick sadly can't attend the workshop, as he has more important things to look after for the next 6 months, but he contributed an enormous amount to setting things up so I'd like to finish here by thanking him

