

CM30 University of Oxford

Engineering session

Peter Ford

Tim Hayler

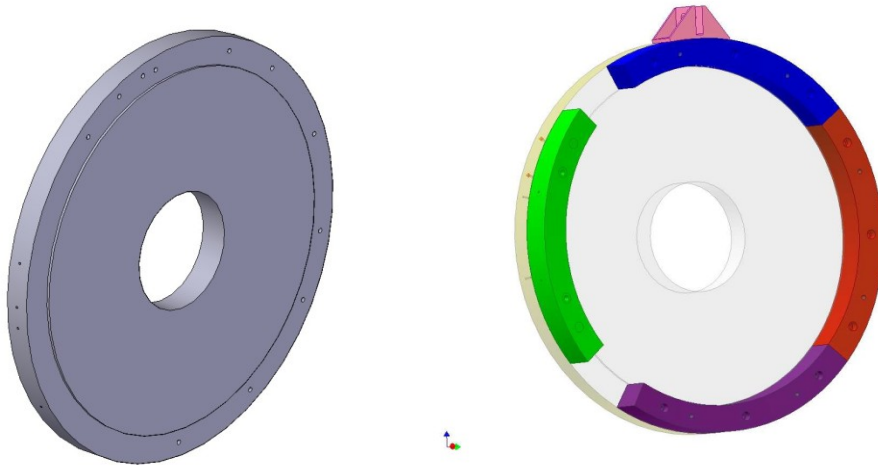
Eddie Holtom

Roy Preece

Jason Tarrant

Steve Virostek

CM30 Engineering

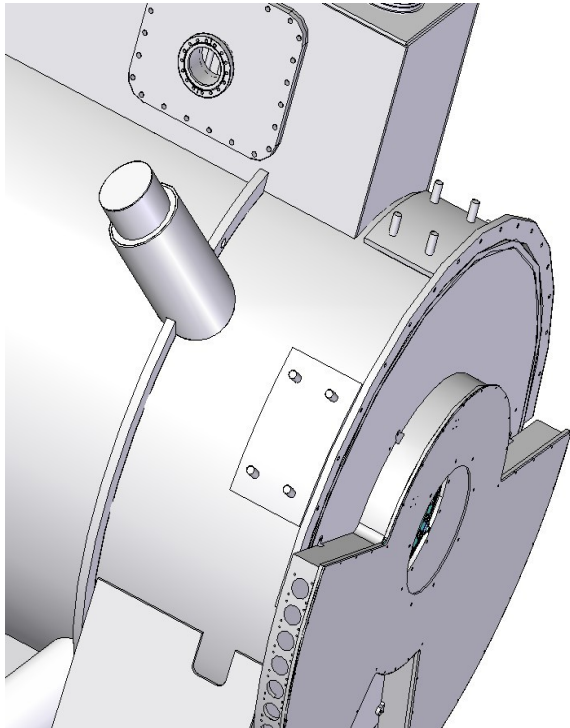


Can we have the upstream (420mm) and downstream (600mm) Virostek plate CAD models? We are interested in the mounting holes for the TOF cage split rings, the supporting brackets, and lifting points.

Who is making The TOF detector? Who is doing the mechanical engineering parts like the split rings?

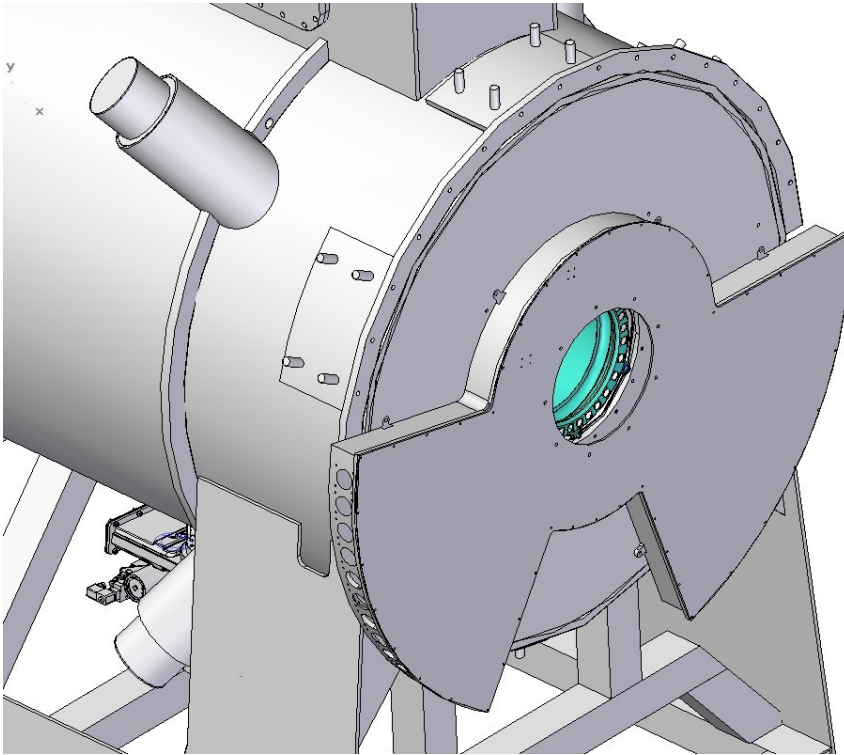
CM30 Engineering

Can we work to specify the interface between the Spectrometer Solenoid and the Virostek plate support brackets? Currently welded pad with studs. RAL are going to produce a new design and drawings of the Virostek plate brackets, we need to make sure the RAL design interfaces with the Spectrometer Solenoid mounting pads.



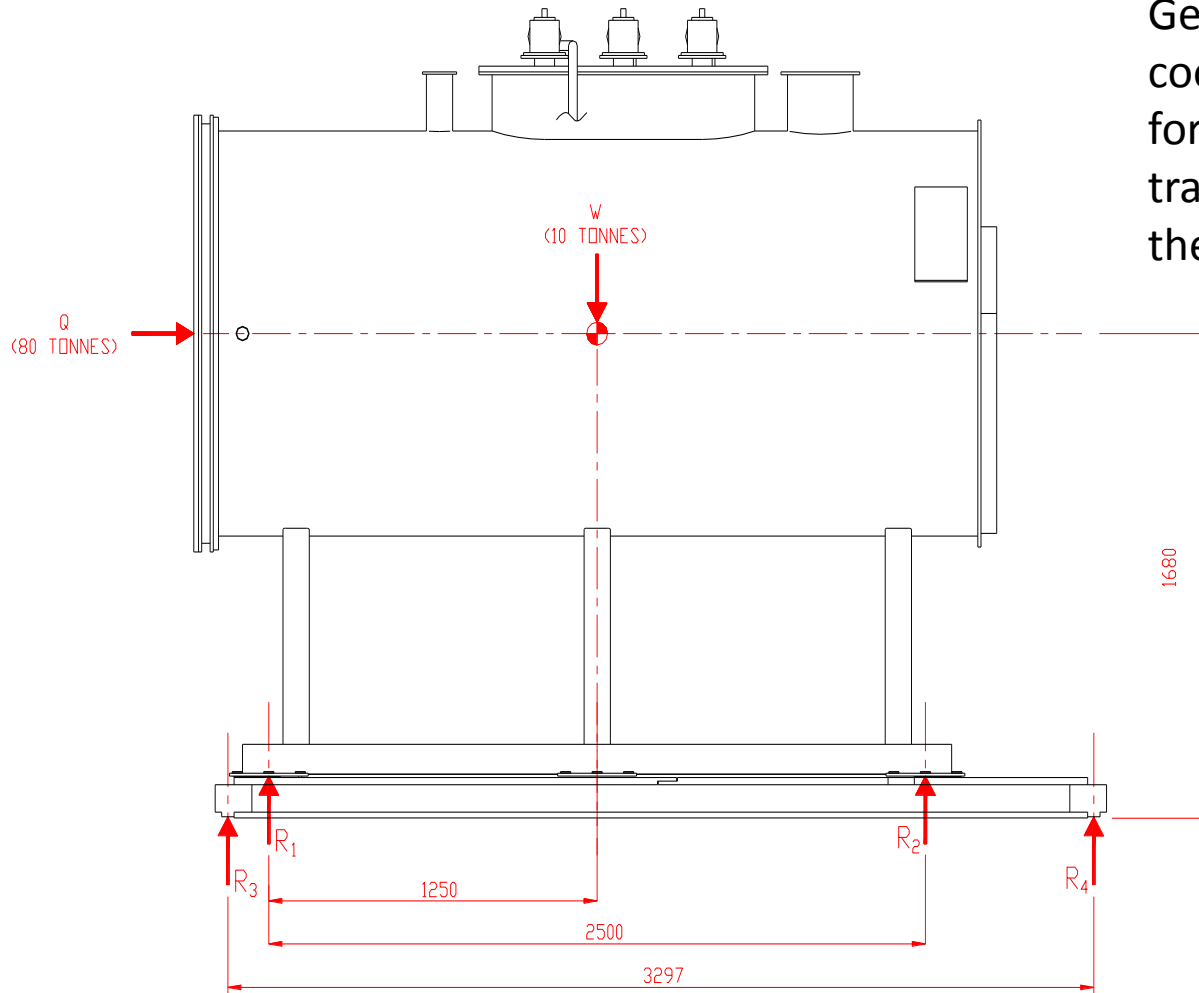
Can we have pads welded to the Spectrometer that leave a flat surface to mount the brackets on?
Studs or blind tapped holes in the pads?

CM30 Engineering



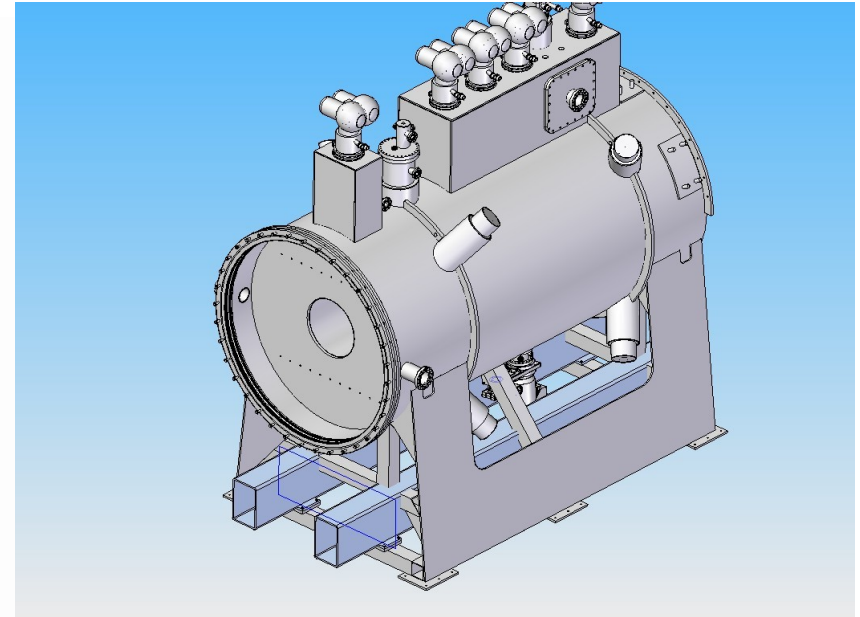
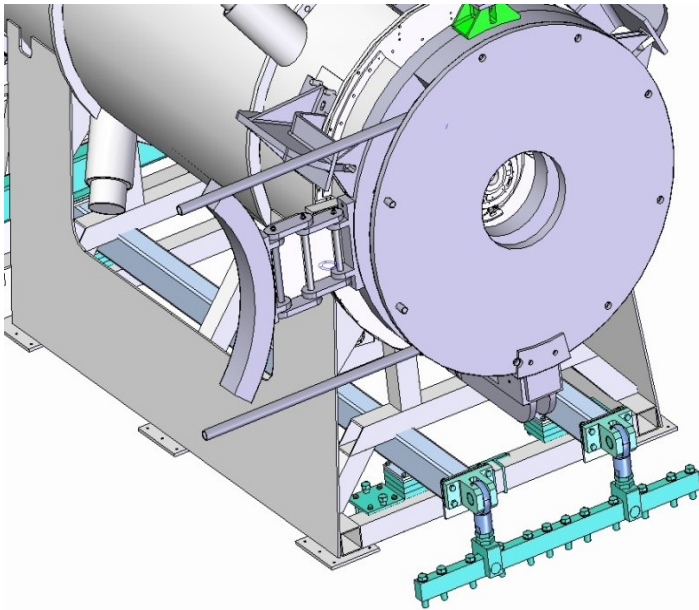
Do we understand all the patch panel interfaces for the spectrometer and tracker?
Do we have any drawings of the patch panel?
What is required for the patch panel seal?

CM30 Engineering



General discussion on the cooling channel magnet forces, how are the forces transmitted, are we all on the same page?

CM30 Engineering



Currently there is a clash between the Spectrometer Solenoid support frame and the restraint beams.

Calculations show we need to increase the size of the restraint beam. Can we agree on the design for the Spectrometer base and restraint beam?

Are the forces we predict real? We are going to a lot of trouble to restrain the Spectrometer, is it really necessary?

CM30 Engineering

Interfaces between the Spectrometer Solenoid and the Radiation shield and the He window?

Surface finish on SS end plate needs to be good enough (circular lay) for 'O' ring seal, the 'O' ring groove will be in the flange of the He window.

Can we get naming convention correct for front plate/end plate, current drawings?

Agree on the pitch circle diameter of the He window PCD?

How perpendicular will the end plate be to the SS bore? Assembly drawings with tolerances?

