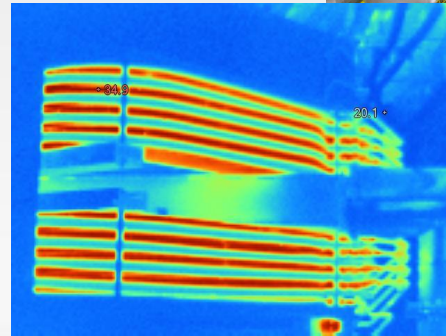
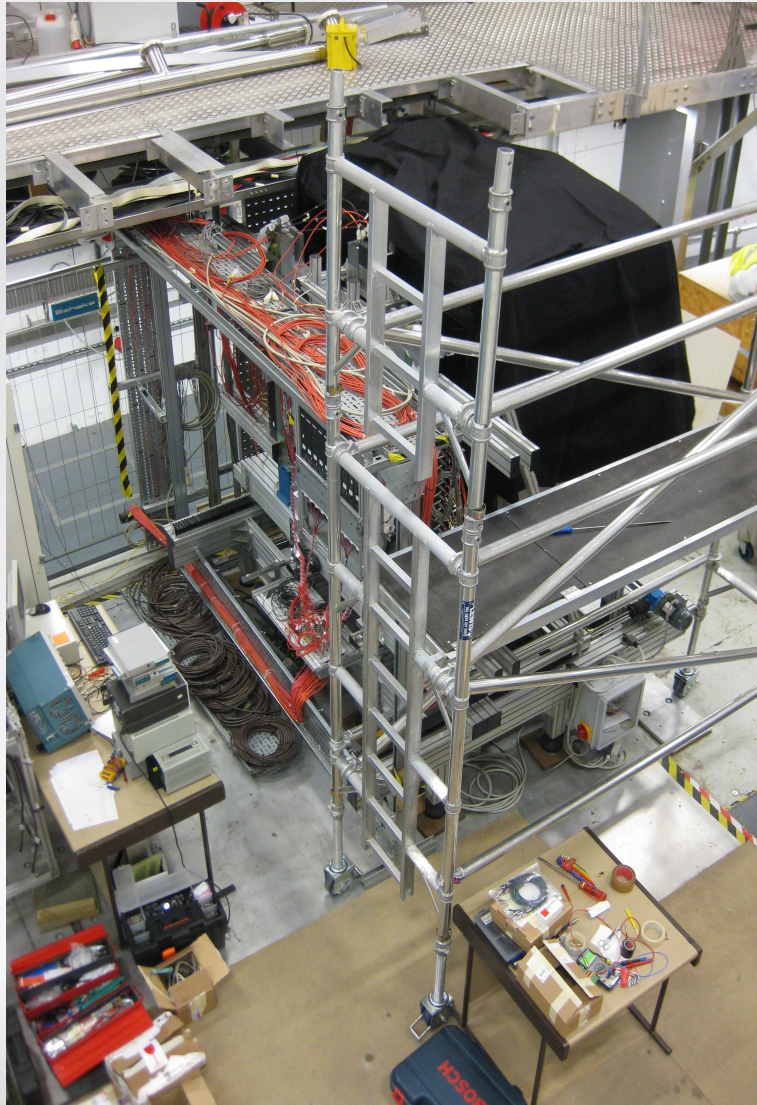


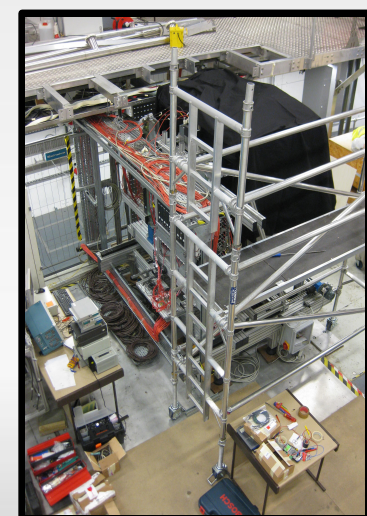
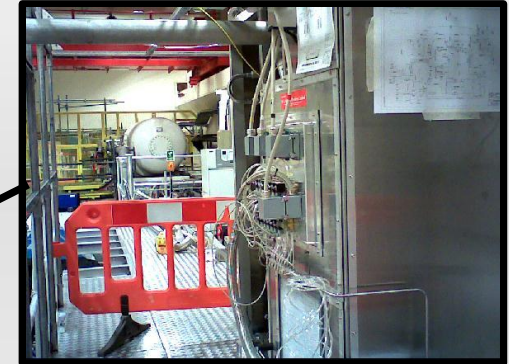
MOM Report



Victoria Blackmore
CM30, Oxford
06/07/11

Hall Progress

- Many additions since last CM

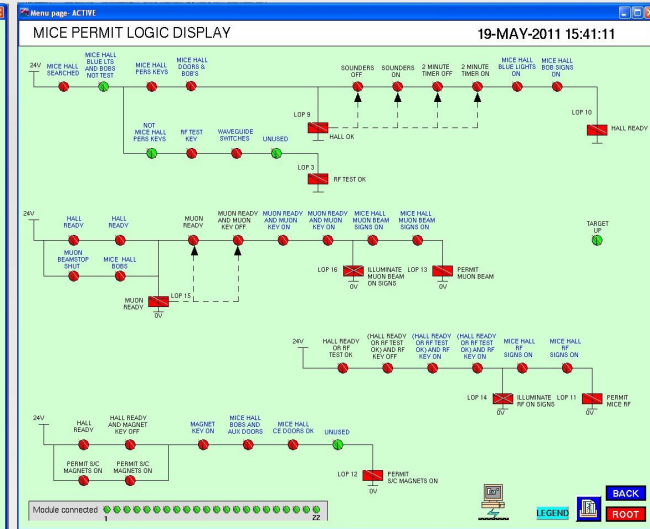
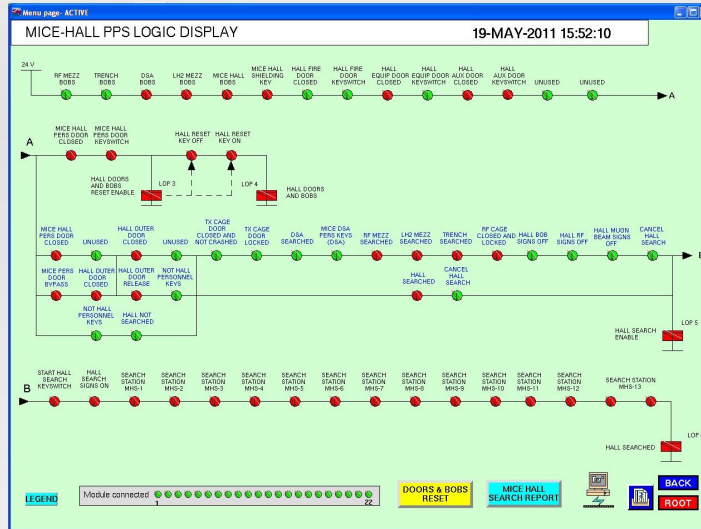
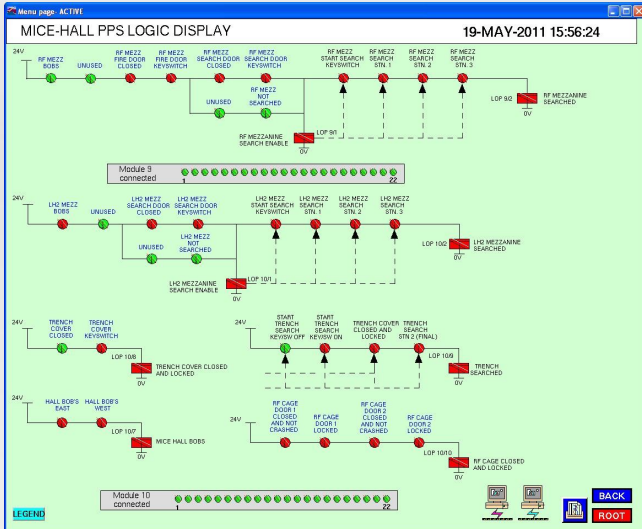


... we need a new
'fisheye' view!

Dry Run: 13/06/11

- Systems check after power shutdown and substation upgrade.
- Revealed a number of problems:
 - DS power supply
 - Target oscilloscope
 - Target DAQ rack trip
 - ΔT over magnets
 - Many PPS problems
 - Misaligned doors, *etc.*
 - Need a permanent intercom between personnel doors!

PPS Status



- Area searches:
 - RF Mezzanine
 - LH2 Mezzanine
 - Trench
 - Beam Off Buttons (BOBs)



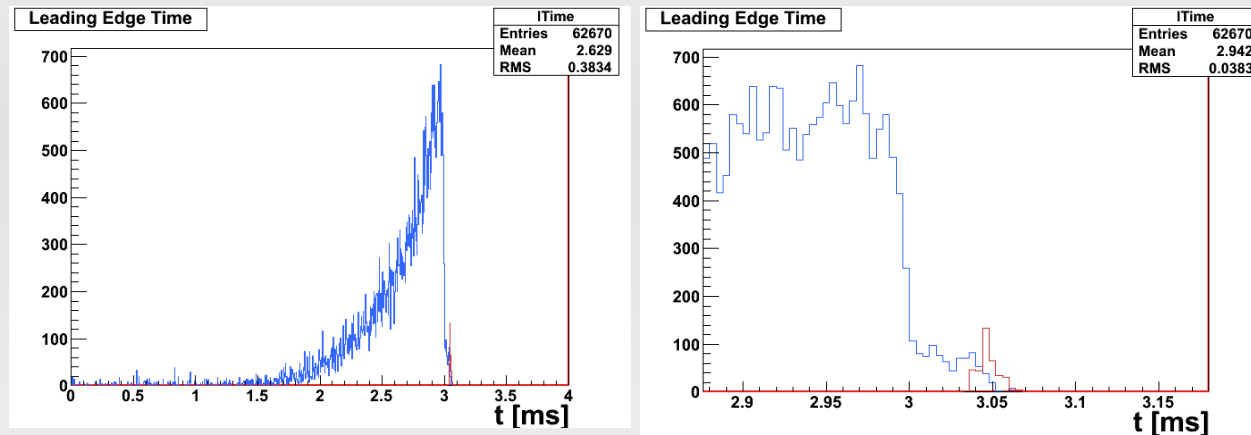
- Main hall PPS:
 - Enables hall search
 - Controlled access procedure



- Final stages:
 - Sounds beam imminent alarm
 - Grants muon beam permit



Machine Physics Runs



- Three shifts during machine physics (29/06/11 – 01/07/22)
- First EMR data taken
- Minor problems whilst running during first shift: Q4 trips, Q7 water flow
- Remaining shifts peaceful

Future Runs

- Summer runs begin **11th July**

- Will run Monday – Friday until the start of August
- Beam runs from 1pm – 9pm (ISIS allows 8 hours of dipping per day)
- Shifts during beam time, plus hall setup beforehand.

- Itinerary:

- EMR commissioning
 - TOF calibration
 - Beam-energy calibration with CKOVs
 - Step 1 missing data
 - Beam-bump studies
 - Beamloss smoothing
 - Luminosity monitor calibration
- Contact Adam Dobbs for further information

Summary

- Lots of progress made over the last few months.
 - Substation upgrade
 - LH2 tests
 - New mezzanine
 - EMR arrived safe and sound
 - TOFs reinstalled
 - CKOVs reinstalled
 - Need a new survey (soon!)
- No 'showstoppers' found during machine physics runs, but keep fingers crossed...

Notices

- Engineering session trip
 - Integration discussion in the MICE hall
 - Transport provided by Andy Nichols to/from the Denys Wilkinson Building (@9am)
 - Any *extra* people, sign up here.
- Runs next week: Contact Adam Dobbs with beam requests.
 - EMR commissioning – Yordan, Ruslan
 - TOF calibration – Yordan
 - Beam-energy calibration – Alain, Lucien
 - Step 1 missing data – Mark
 - Beam-bump studies – Paul Smith, Chris Booth.
 - Beamloss smoothing – Alain, Paul Smith.
 - Luminosity monitor calibration – Paul Soler