


White Rabbit

COLLABORATION

www.white-rabbit.tech

Gathered to
celebrate





Launch event
tomorrow

And to tell you more about it

Outline

- The Collaboration, why, what?
- Founding members, Structure
- What will we be doing? What can you do with us?
 - Shape the future of the technology
 - Participate in R&D projects
 - Define the testing procedures
 - Get support
 - Get training
 - and much more...!



Amanda Díez Fernández

Knowledge Transfer Officer, CERN

*Community Coordinator
of the Collaboration*



The Collaboration Bureau

Senior White Rabbit Engineers

Community Coordinator

Hosted at CERN, the Bureau is composed of senior engineers with extensive experience in the White Rabbit technology and a community coordinator.

The main task of the Bureau is to ensure a high-performance core technology through regular maintenance and upgrades. It is also there to support all collaboration activities and the day to day running of the Collaboration. The Bureau will provide support via the online forum, as well as direct, private, support to the members.



Maciej Lipinski

WR Engineer

graduated in telecommunications, electronics, and informatics; specialist in control and timing at CERN; co-author of the White Rabbit extension to PTP (IEEE1588-2008) and IEEE1588-2019; chair of the New Features Committee in the P1588 Working



Adam Wujek

WR Engineer

graduated in computer science and System-on-Chip design; member of White Rabbit core team since 2014; specialized in WR software; member of the New Features Committee in the P1588 Working Group



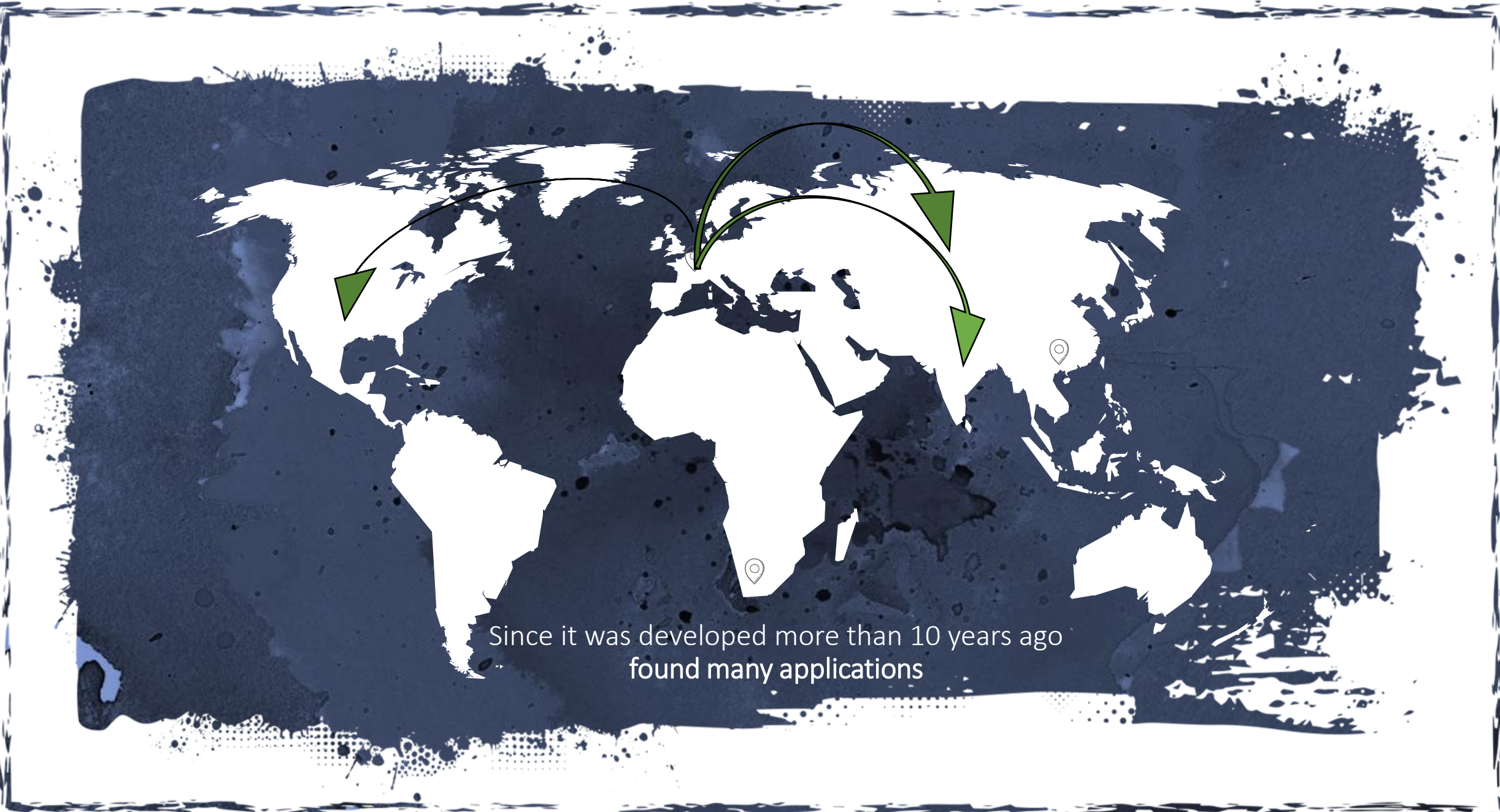
Amanda Díez Fernández

Community Coordinator

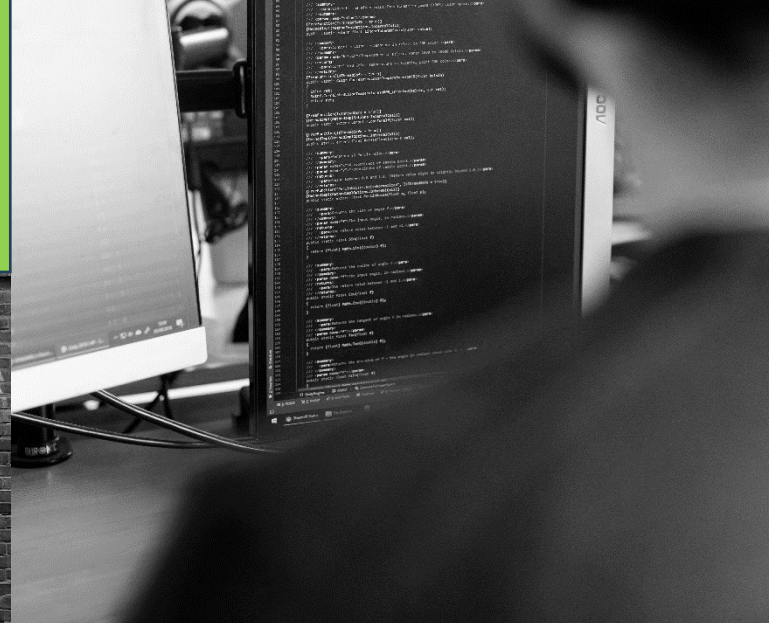
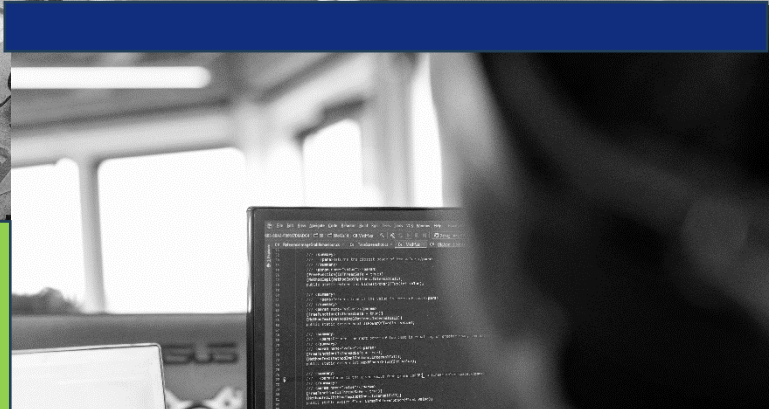
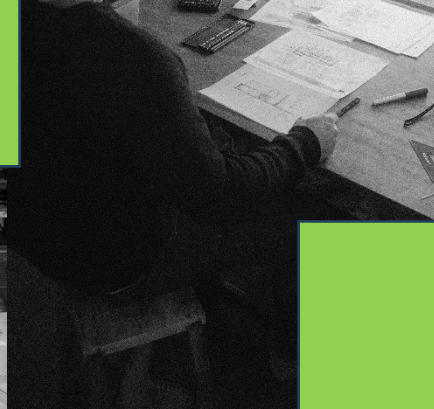
graduated in materials science and physics; works at the Business Development Section of the Knowledge Transfer Group at CERN, whose mission is to facilitate the uptake of CERN technologies and expertise by industry.

Why, what?

The Collaboration



Since it was developed more than 10 years ago
found many applications





**Much more
untapped potential impact**

Became part of
a standard:
High Accuracy Profile
of IEEE 1588-2019



Bring stakeholders of the technology together

- companies
 - end users
 - positioning, navigation and timing (PNT) providers
- national metrology institutes
- universities
- research institutes/laboratories



Pool resources
& expertise

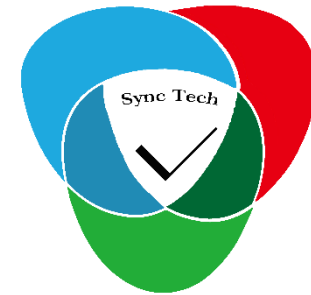
To maintain a
high-performance
open-source core
for the benefit of all





White Rabbit Collaboration

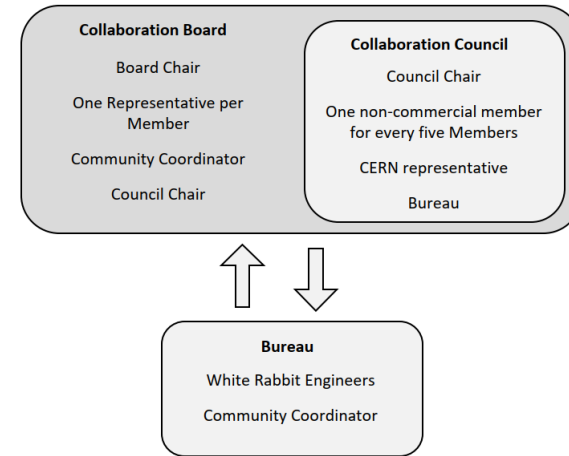
Launched in 2024



*talks by all members tomorrow!



Governing bodies



Board

- every member is present (1 vote each)
- main body for information exchange, discussions, reviewing the progress of the collaboration etc.

Council

Amongst others, in charge of:

- Granting the status of Associated Labs
- Setting out the WR Technology Test requirements;
- Approving Project proposals;
- Approving the WR Technology future development plan.

Chair of the Board

Javier Serrano

- Representing the Collaboration, Collaboration activities and the Collaboration's vision to the public;
- Reporting on a yearly basis to the Collaboration Board on the Collaboration activities, the financial status of the Collaboration and the use of the sums contained in the Collaboration Fund;
- Chairing meetings of the Collaboration Board;





Evangelia Gousiou

CERN

Eva, electronics engineer, is the coordinator of the WR team at CERN (5-8 FTEs, electronics and software developers) that is working for the implementation and maintenance of WR applications for the CERN accelerators.



Peter Jansweijer

Nikhef

Lead engineer at the electronics technology (ET) department of Nikhef that has been actively involved in WR since 2010. Main contributions are WR absolute calibration and various low phase noise hardware implementations. Peter is member of the New Features Committee in the P1588 Working Group



Bob Noseworthy

InterOperability Laboratory UNH



Benoît Rat

Safran

Graduated as "communication systems" engineer from EPFL, he started collaborating in 2010 on the development of the White Rabbit Switch. He has since continued bringing sub-nanosecond synchronization to a wide range of devices in time-critical infrastructures. In his current role as director of the Special Projects Unit, he oversees the implementation of innovative PNT solutions within emerging markets.



Guanghua Gong

SyncTechnology

Associate Researcher at Tsinghua University and technical manager of SyncTechnology; involved in WR since 2014 and leads a team focusing on the WR timing system for particle physics facilities such as cosmic ray observatory and XFEL, contributes to the design of CUTE series WR nodes and a Fan-less WRS hardware.



Daniel Chung Yoon

GMV

Section head of GMV's Time and Frequency division in the UK. He is experienced in managing and leading technical work for timescale generation and distribution projects. He is leading the development of a White Rabbit Switch v4 at GMV in the UK



Nick Amey

IQD Frequency Products

Nick Amey MIET, Studied Electronics and Telecommunications at Coventry, UK, 20 years at IQD Frequency Products LTD, Senior Member of the IEEE



Seth Friedman

Liquid Markets Solutions



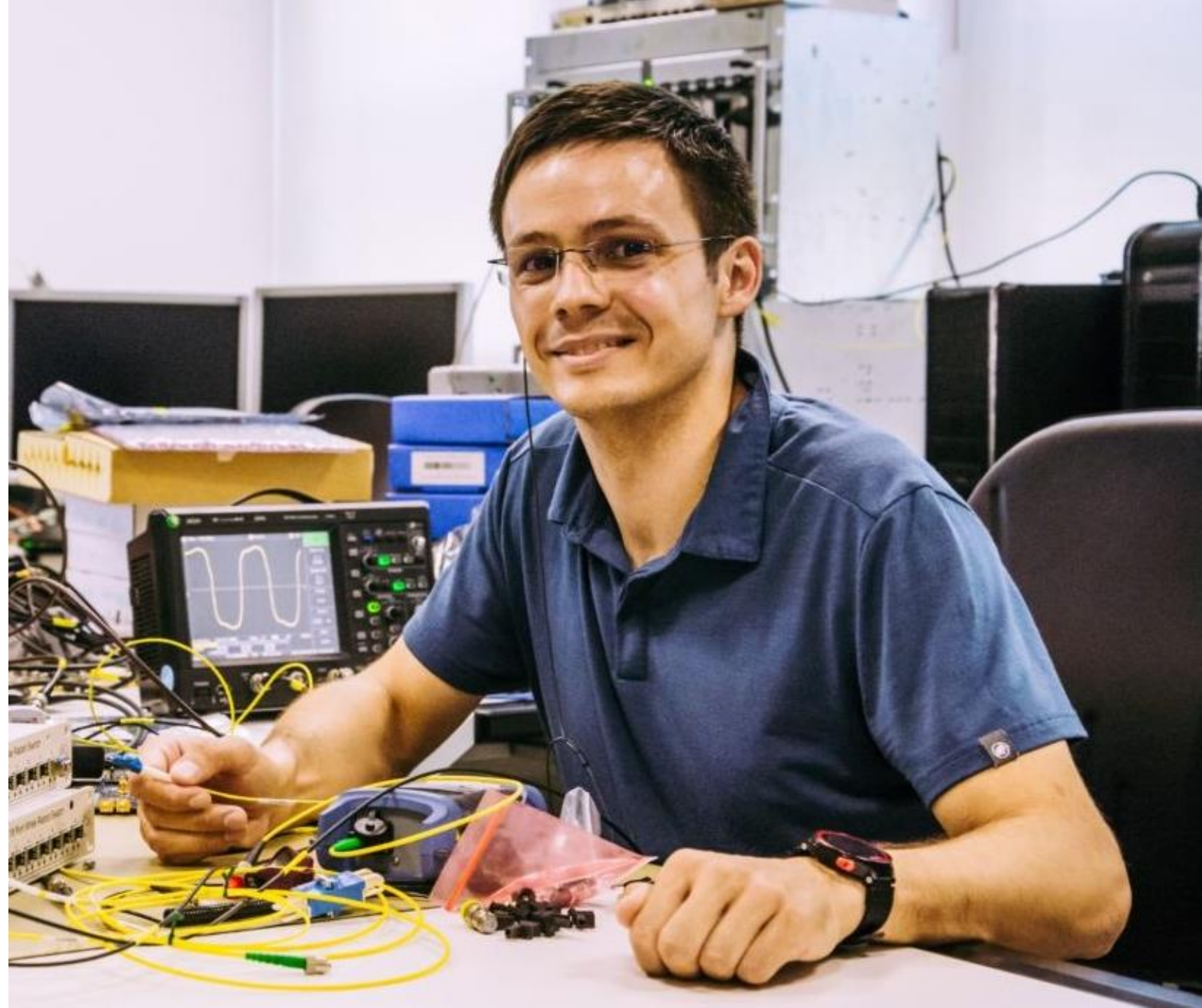
Bence Szikora

Jump Trading

Chair of the Council

Maciej Lipinski

- Chairing meetings of the Collaboration Council;
- Reporting to the Collaboration Board on the activities of the Collaboration Council.



Council Members



Evangelia Gousiou

CERN

Eva, electronics engineer, is the coordinator of the WR team at CERN (5-8 FTEs, electronics and software developers) that is working for the implementation and maintenance of WR applications for the CERN accelerators.



Peter Jansweijer

Nikhef

Lead engineer at the electronics technology (ET) department of Nikhef that has been actively involved in WR since 2010. Main contributions are WR absolute calibration and various low phase noise hardware implementations. Peter is member of the New Features Committee in the P1588 Working Group

*third member expected to be elected soon

The Collaboration Bureau

Senior White Rabbit Engineers

Community Coordinator

Hosted at CERN, the Bureau is composed of senior engineers with extensive experience in the White Rabbit technology and a community coordinator.

The main task of the Bureau is to ensure a high-performance core technology through regular maintenance and upgrades. It is also there to support all collaboration activities and the day to day running of the Collaboration. The Bureau will provide support via the online forum, as well as direct, private, support to the members.



Maciej Lipinski

WR Engineer

graduated in telecommunications, electronics, and informatics; specialist in control and timing at CERN; co-author of the White Rabbit extension to PTP (IEEE1588-2008) and IEEE1588-2019; chair of the New Features Committee in the P1588 Working



Adam Wujek

WR Engineer

graduated in computer science and System-on-Chip design; member of White Rabbit core team since 2014; specialized in WR software; member of the New Features Committee in the P1588 Working Group



Amanda Díez Fernández

Community Coordinator

graduated in materials science and physics; works at the Business Development Section of the Knowledge Transfer Group at CERN, whose mission is to facilitate the uptake of CERN technologies and expertise by industry.

The Collaboration
Activities

What will we be doing?

What can you do with us?

Take part in the
discussion





To shape the future
of the technology



Development Plan



Participate in R&D Projects

- Develop new features to address your needs
- Demonstrate applicability in new domains

Target: pre-competitive stage

Possible Topics

- Demonstrating and facilitating the use of WR in the control plane of quantum networks
- Using WR for long distance networks
- Using WR in telecommunications networks for 5G/6G
- Implementing seamless redundancy in WR networks
- Implementing the WR core building blocks in an ASIC



QUANTUM
TECHNOLOGY
INITIATIVE



Define tests to ensure performance and interoperability

Provided by network of associated laboratories



Become an associate
lab providing those
tests

Apply to use
the Trademark
on your tested products

*Product listed in website



White Rabbit

Get dedicated and timely support from the Bureau



Two sharpened pencils, one slightly above the other, pointing towards the top right. They are positioned on the left side of the slide, partially overlapping the text area.

Training

A catalogue of trainings, including **free** in person trainings for members.

They will address fundamental aspects of the technology and its implementation



User friendly documentation

Improved user experience

Reduced uptake time

What if I don't join?



- That is also fine, nothing changes, so to say.
- Still have access to forum
- Can attend WR Workshops
- Can access technology (which will always remain open source).

Embark with us in
this new chapter of
the White Rabbit
technology...



... to make it
grow together!

Enjoy the event!

Speak to us!

Speak to the
members of the
Collaboration!

