

# Welcome to ICEPP, U.Tokyo!

LLP2024, 1 - 5 July 2024

Toshinori MORI, July 1, 2024



# International Center for Elementary Particle Physics (ICEPP)

Founded in 1974  
by M. Koshihba



- DASP, DORIS collider, DESY, 1974-
  - JADE, PETRA collider, DESY, 1979-
  - OPAL, LEP collider, CERN, 1989-
    - Studies on ILC, 1990-
  - ATLAS, LHC collider, CERN, 2008-
  - MEG, PSI, 2008-
  - MEG II, PSI, 2021-
  - Quantum / AI, 2021-
- Koshihba also founded:
    - KAMIOKANDE, 1983-
    - Super-KAMIOKANDE, ICRR, 1996-

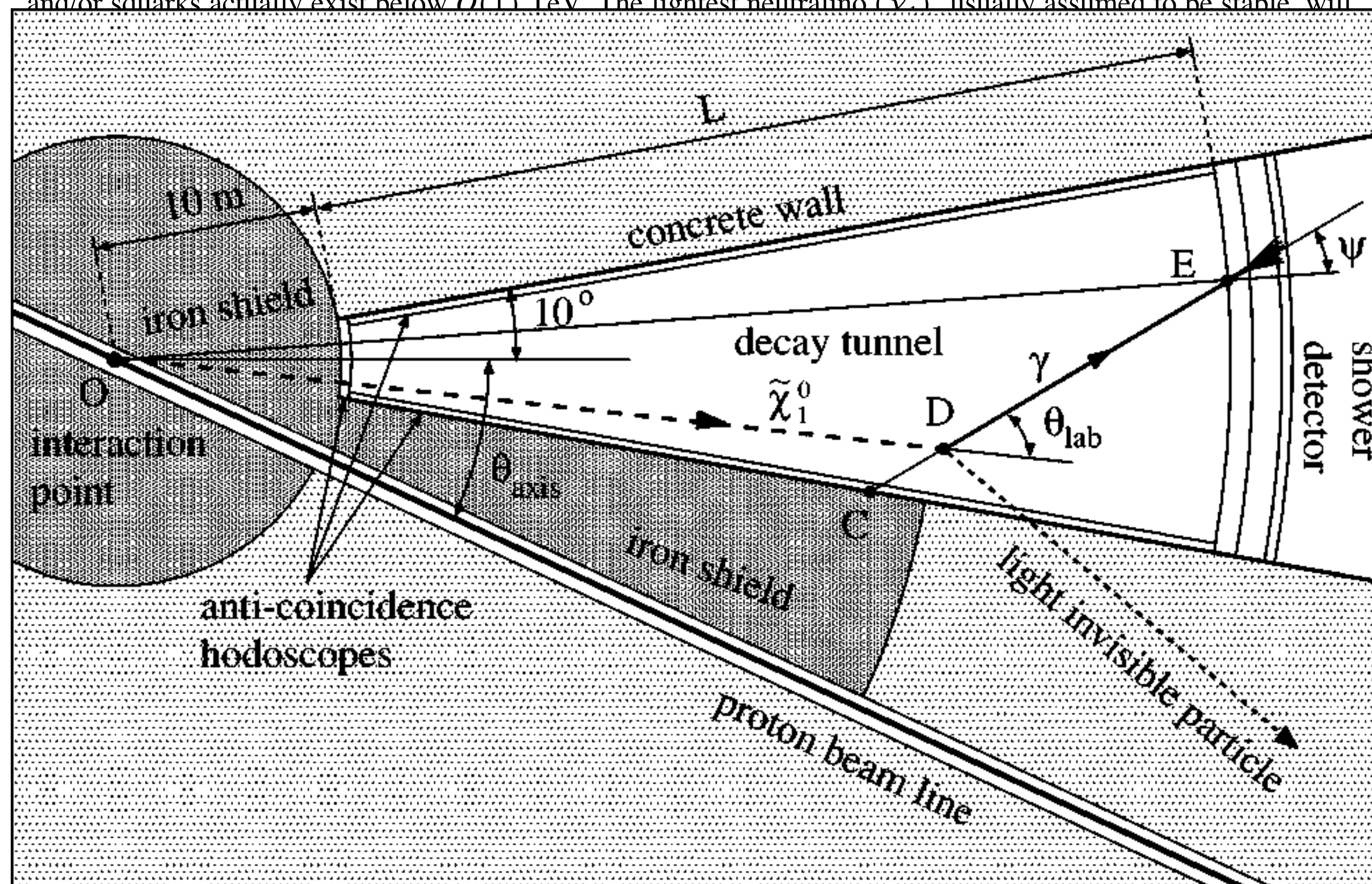
## Hadron colliders as the “neutralino factory”: Search for a slow decay of the lightest neutralino at the CERN LHC

K. Maki\* and S. Orito†

*Department of Physics, School of Science, University of Tokyo, Tokyo 113, Japan*

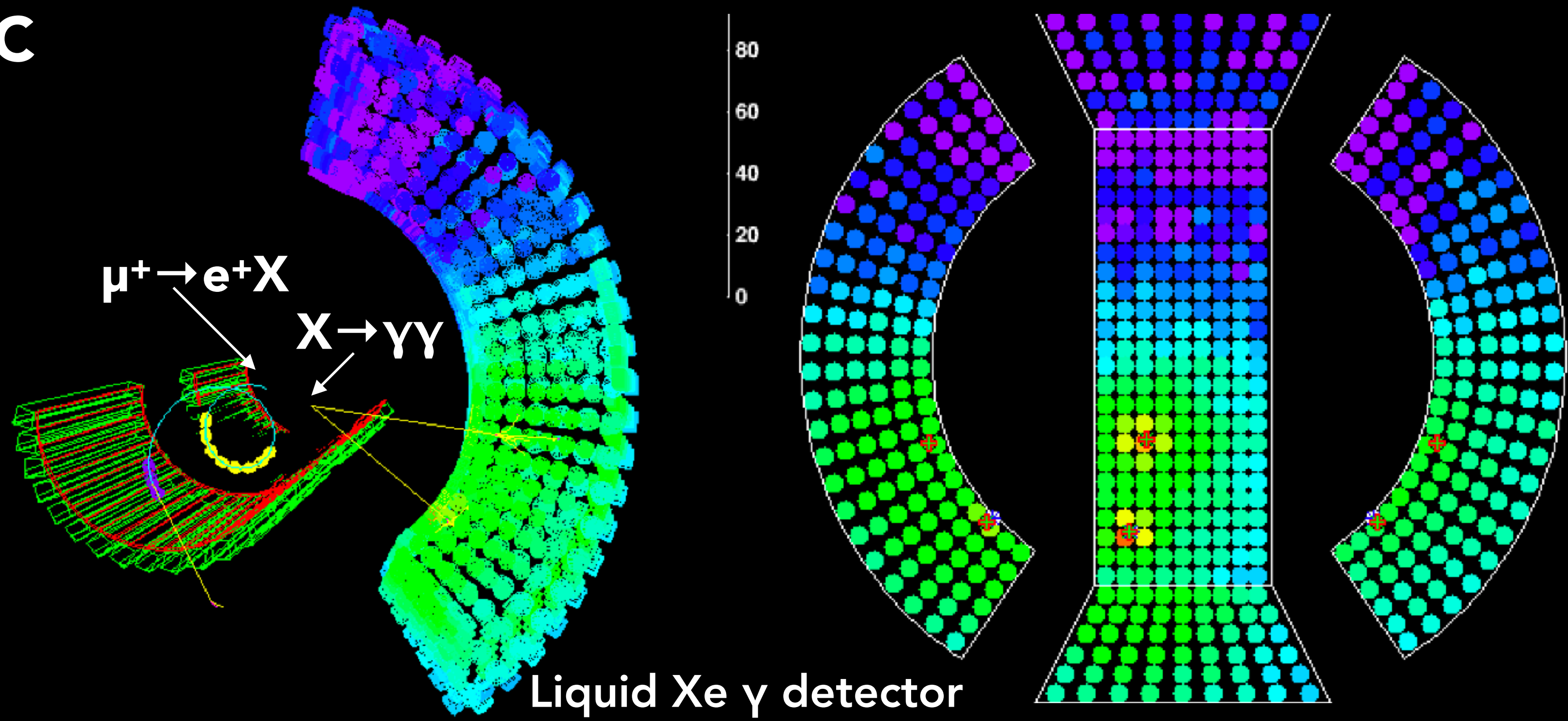
(Received 18 June 1997; published 13 November 1997)

The prospects are examined for the detection of a slow decay of the lightest neutralino (or any other long-lived particles) at the CERN LHC and at the Very Large Hadron Collider (VLHC). We first point out that such hadron colliders will become the “neutralino factory” producing  $10^6$ – $10^9$  neutralinos/yr, if gluinos and/or squarks actually exist below  $O(1)$  TeV. The lightest neutralino ( $\tilde{\chi}_1^0$ ), usually assumed to be stable, will



Early LLP Study  
at ICEPP  
(1997)

MC



MEG Search for  
MeV LFV LLP  
(2020)

Euro. Phys. J. C80, 858 (2020)

