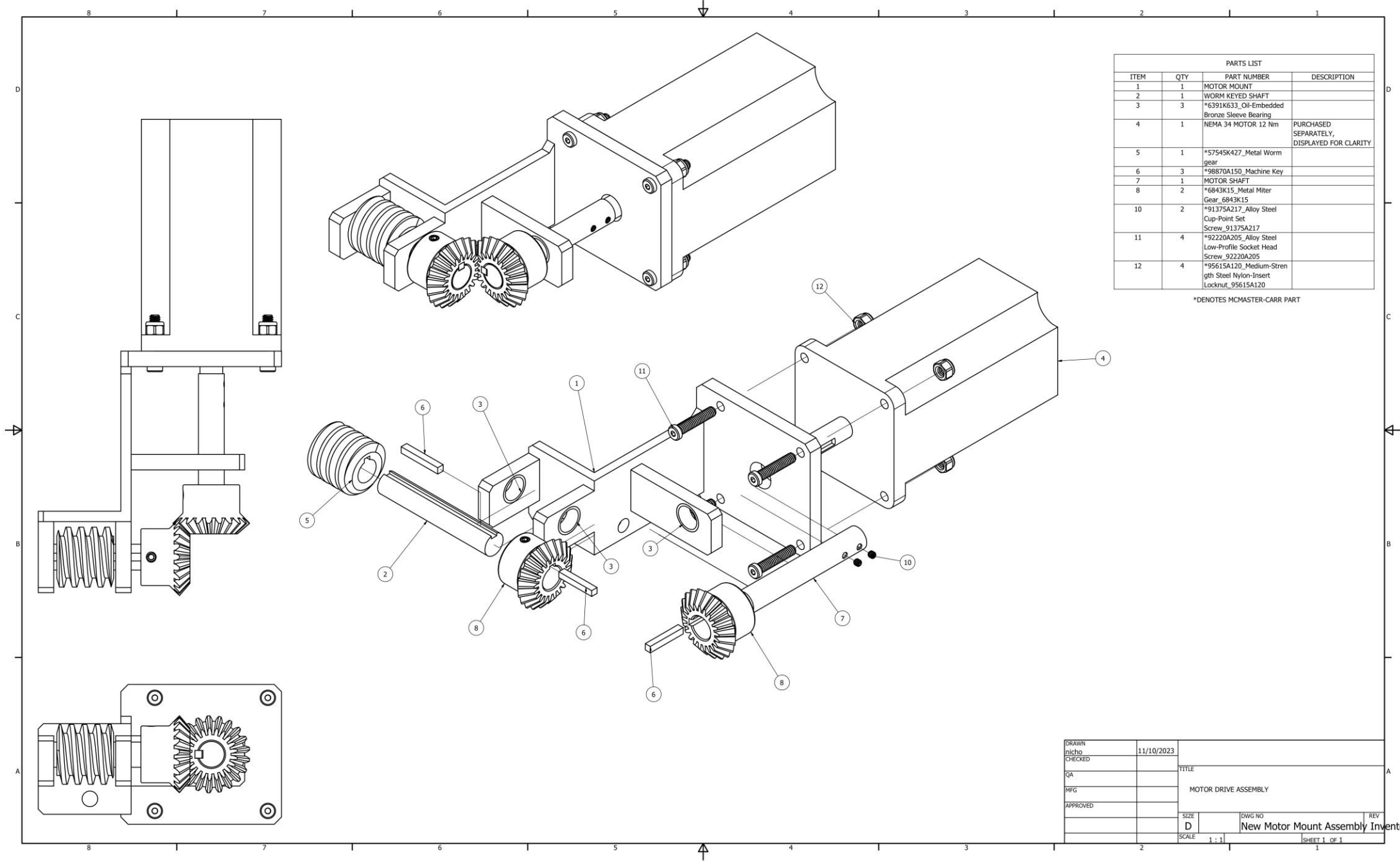


# New Motor Mount

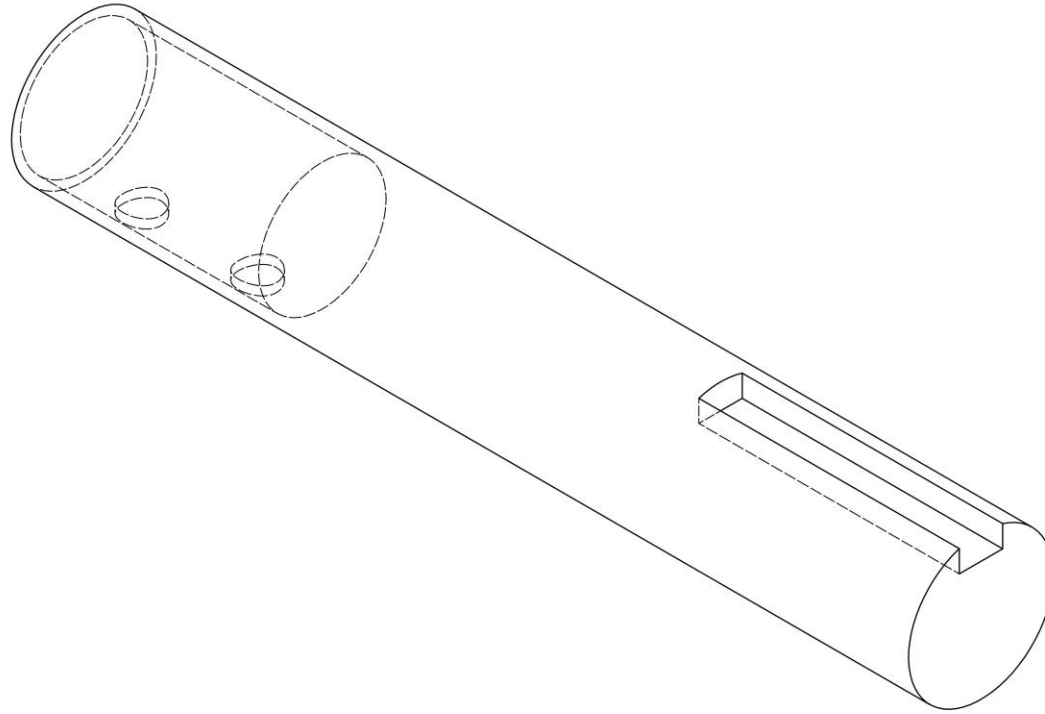
Nelda Hernandez



PARTS LIST			
ITEM	QTY	PART NUMBER	DESCRIPTION
1	1	MOTOR MOUNT	
2	1	WORM KEYED SHAFT	
3	3	*6391K633_Oil-Embedded Bronze Sleeve Bearing	
4	1	NEMA 34 MOTOR 12 Nm	PURCHASED SEPARATELY, DISPLAYED FOR CLARITY
5	1	*57545K427_Metal Worm gear	
6	3	*98870A150_Machine Key	
7	1	MOTOR SHAFT	
8	2	*6843K15_Metal Miter Gear_6843K15	
10	2	*91375A217_Alloy Steel Cup-Point Set Screw_91375A217	
11	4	*92220A205_Alloy Steel Low-Profile Socket Head Screw_92220A205	
12	4	*95615A120_Medium-Strength Steel Nylon-Insert Locknut_95615A120	

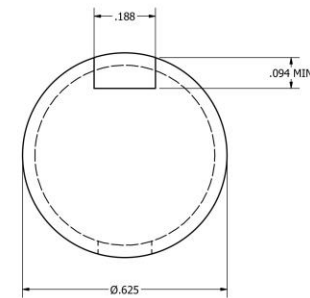
\*DENOTES MCMaster-CARR PART

DRAWN	nicho	11/10/2023	
CHECKED			TITLE
QA			MOTOR DRIVE ASSEMBLY
MFG			
APPROVED			
		SIZE	DWG NO
		D	New Motor Mount Assembly Invento
		SCALE	1 : 1
			SHEET 1 OF 1



NOTES:

1. DEBURR ALL SHARP EDGES AS NECESSARY
2. KEYED SECTION MUST MEET MINIMUM LENGTH
3. KEYED SECTION MUST FIT 3/16 INCH KEY
4. HOLE THROUGH CENTER MUST MEET MINIMUM DEPTH
5. HOLE THROUGH CENTER MUST FIT 14 MM SHAFT
6. MADE FROM MCMASTER-CARR PART NO. 1346K24
7. UNLESS OTHERWISE STATED, TOLERANCE 0.XX TO  $\pm 0.01$  IN AND 0.XXX TO  $\pm 0.005$  IN



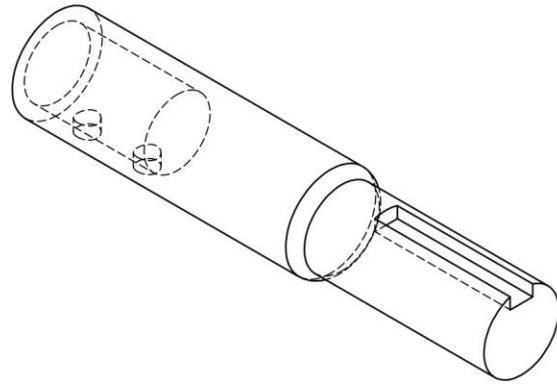
DRAWN	nicho	11/10/2023		
CHECKED			TITLE	
QA			MOTOR PARTIALLY KEYED SHAFT	
MFG			SIZE	DWG NO
APPROVED			D	Motor Shaft 1.75 in MD
			SCALE	1
			5 : 1	SHEET 1 OF 1

2

1

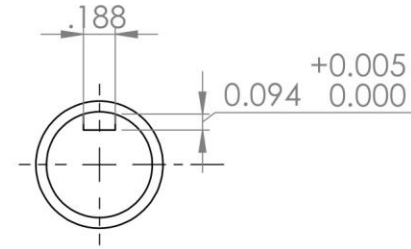
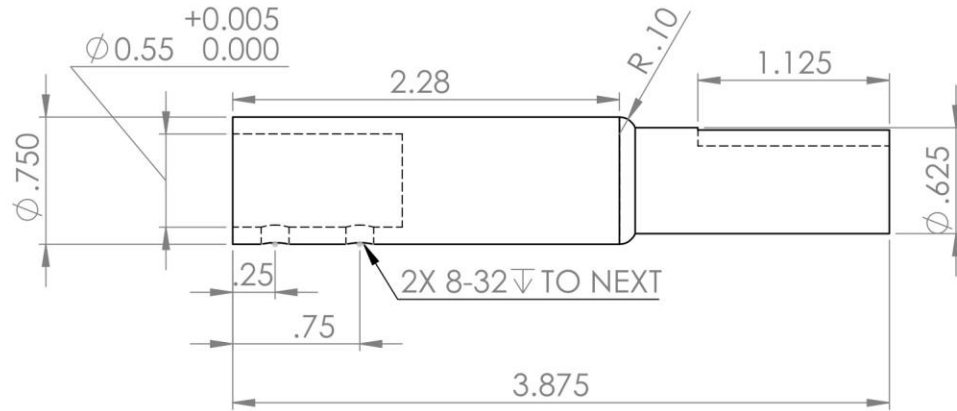
NOTES:

- 1. DEBURR ALL SHARP EDGES AS NECESSARY
- 2. KEYED SECTION MUST FIT 3/16 INCH KEY
- 3. HOLE THROUGH CENTER MUST FIT 14MM SHAFT
- 4. TOLERANCE TO 0.XX TO ± 0.01 IN AND 0.XXX TO ± 0.005 IN
- 5. MADE FROM MCMASTER-CARR PART NO. 1346K31



B

B



A

A

DRAWN: Nelda Hernandez	2/10/24		
CHECKED		TITLE:	
ENG APPR.		MOTOR PARTIALLY KEYED SHAFT	
MFG APPR.		SIZE	DWG. NO.
Q.A.		<b>A</b>	
COMMENTS:		SCALE: 1:1	WEIGHT: SHEET 1 OF 1

2

1