

DRD1
Gaseous Detectors
School



Lab exercises - safety

Safety rules

GDD Lab 154/R-007 is Supervised Radiation Area

- Strictly no food / no drinks
- No access for pregnant women



Dosimetry

- Tutors handle sources
- All tables equipped with active dosimeter



Please ask tutors in case of any doubt or questions.

Training courses

For students attending lectures & lab exercises:

If you do not have a CERN access card yet, you can pick it up at Building 33 (CCSC).
Please activate your computing account.

Please complete mandatory safety courses listed below before the lab exercises if not already done.

Electrical Safety - Awareness: <https://lms.cern.ch/ekp/servlet/ekp?CID=EKP000043082&TX=FORMAT1&BACKTOCATALOG=Y&DECORATEPAGE=N>

Radiation Protection - Awareness: <https://lms.cern.ch/ekp/servlet/ekp?CID=EKP000040639&TX=FORMAT1&BACKTOCATALOG=Y&DECORATEPAGE=N>

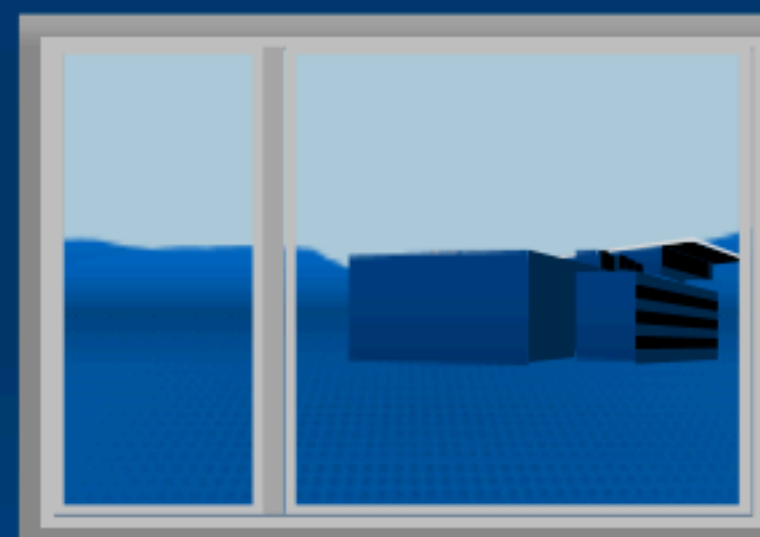
Chemical Safety - Awareness: <https://lms.cern.ch/ekp/servlet/ekp?CID=EKP000040661&TX=FORMAT1&BACKTOCATALOG=Y&DECORATEPAGE=N>

Safety at CERN: <https://lms.cern.ch/ekp/servlet/ekp?CID=EKP000040616&TX=FORMAT1&BACKTOCATALOG=Y&DECORATEPAGE=N>

In case of access of technical problems, please let us know in the coffee / lunch break.

In case of emergency

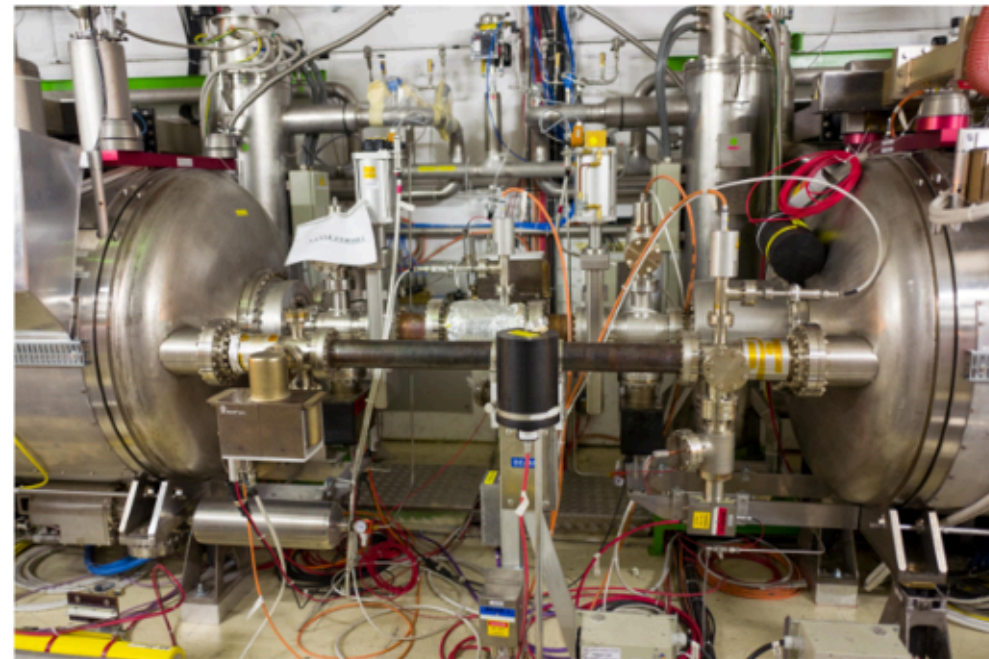
Keep calm, keep thinking and act!



+41 22 76 74444

General instructions

Unknown equipment



Electrical
equipment?



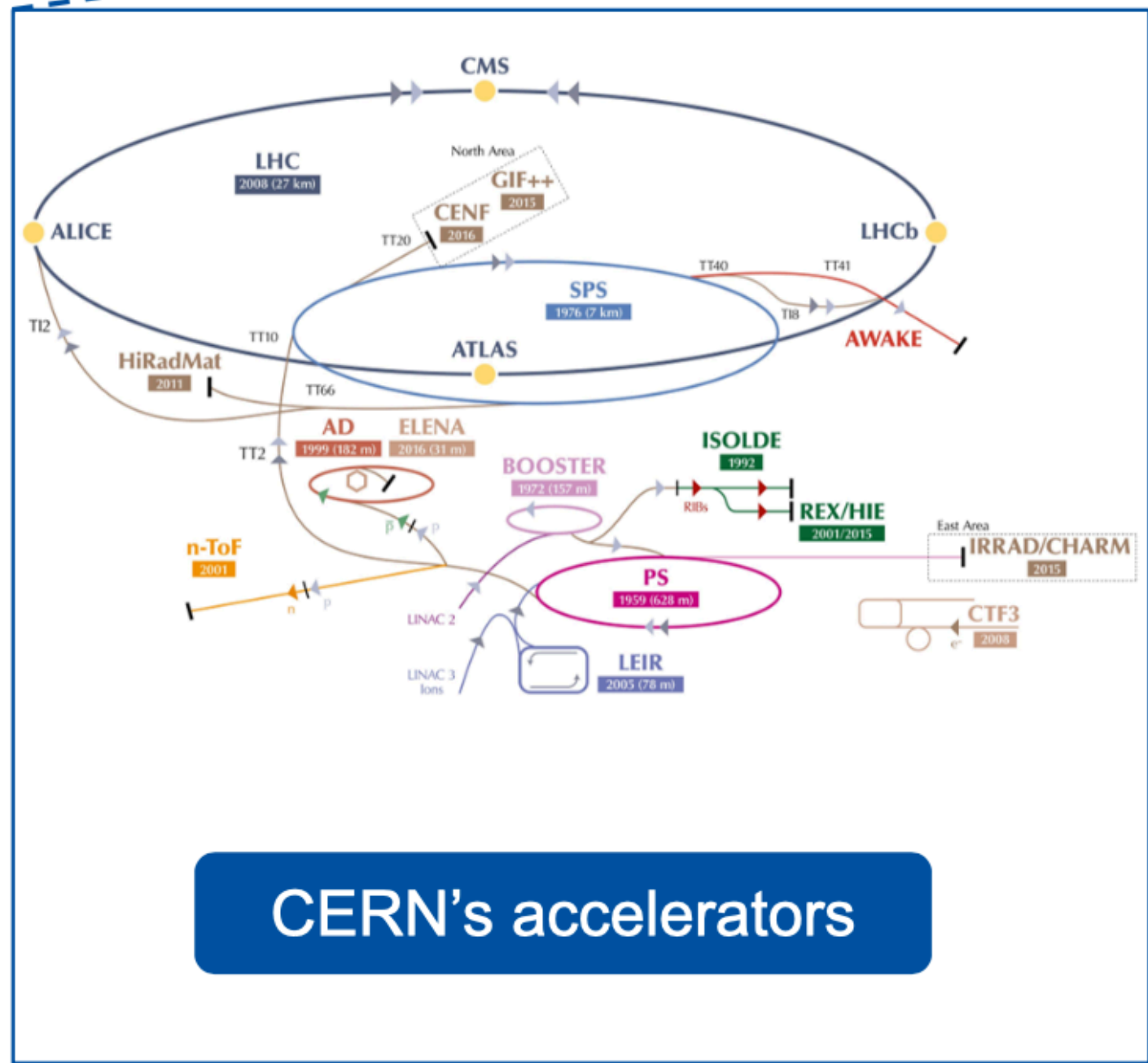
Don't know what
it is?



Do not touch or
disconnect!

Electrical Safety - Awareness

Specific characteristics of CERN's facilities



Many pieces of electrical equipment

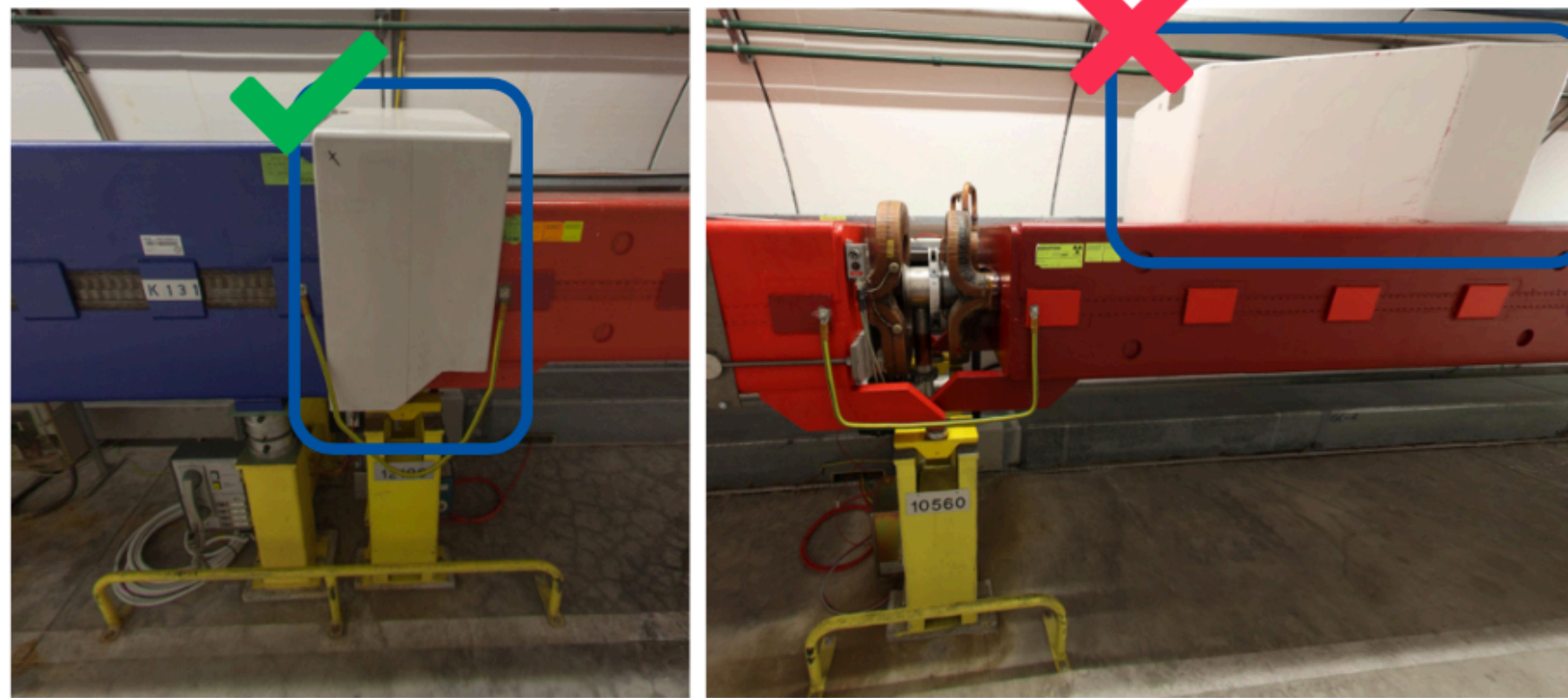
Unusual
Different appearance
Difficult to identify



Electrical hazards

General instructions

Protective covers



Protective covers

Do not remove!

Further information

General principles of radiation protection



The Radiation Protection Group of the HSE Unit ensures that personnel working on the CERN site and the general public are protected from the potentially harmful effects of ionising radiation linked to CERN's activities. To this end it applies the three basic principles of radiation protection:



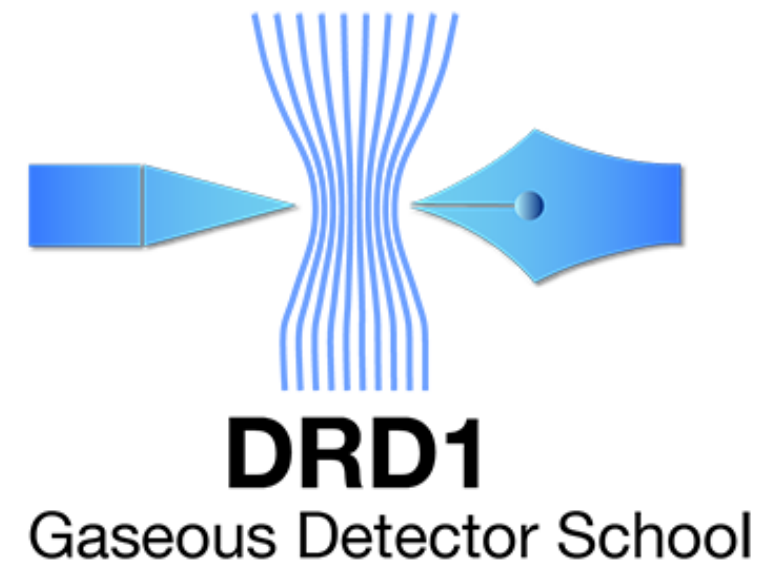
of exposure



**of personal and
collective doses**



of received doses



?

drd1-school@cern.ch