

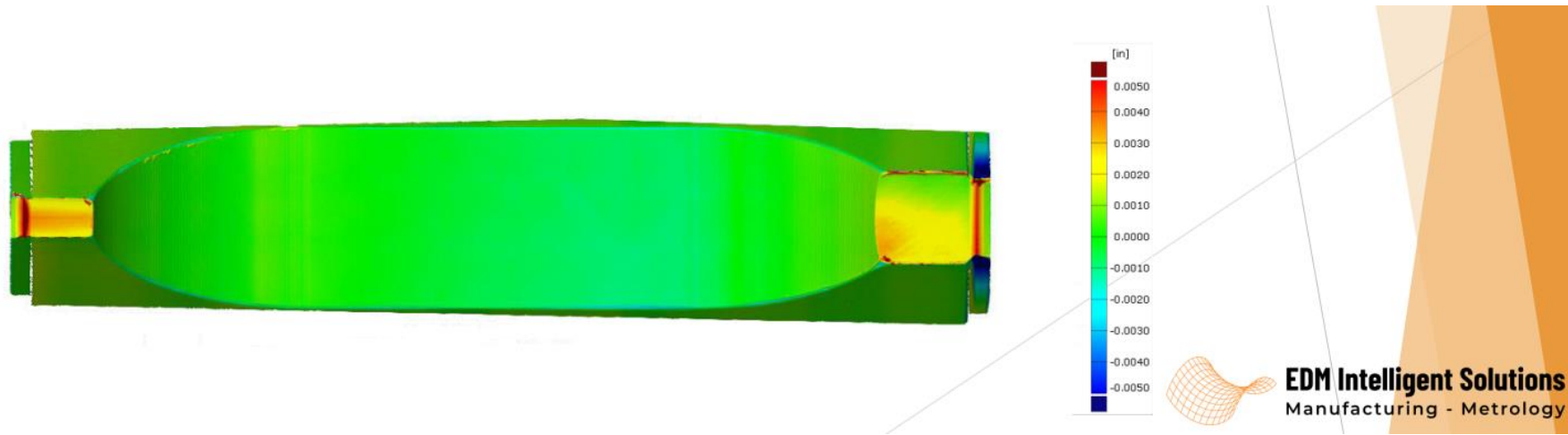
Facet Metrology

Greg P. Le Sage

4 MAR 2024

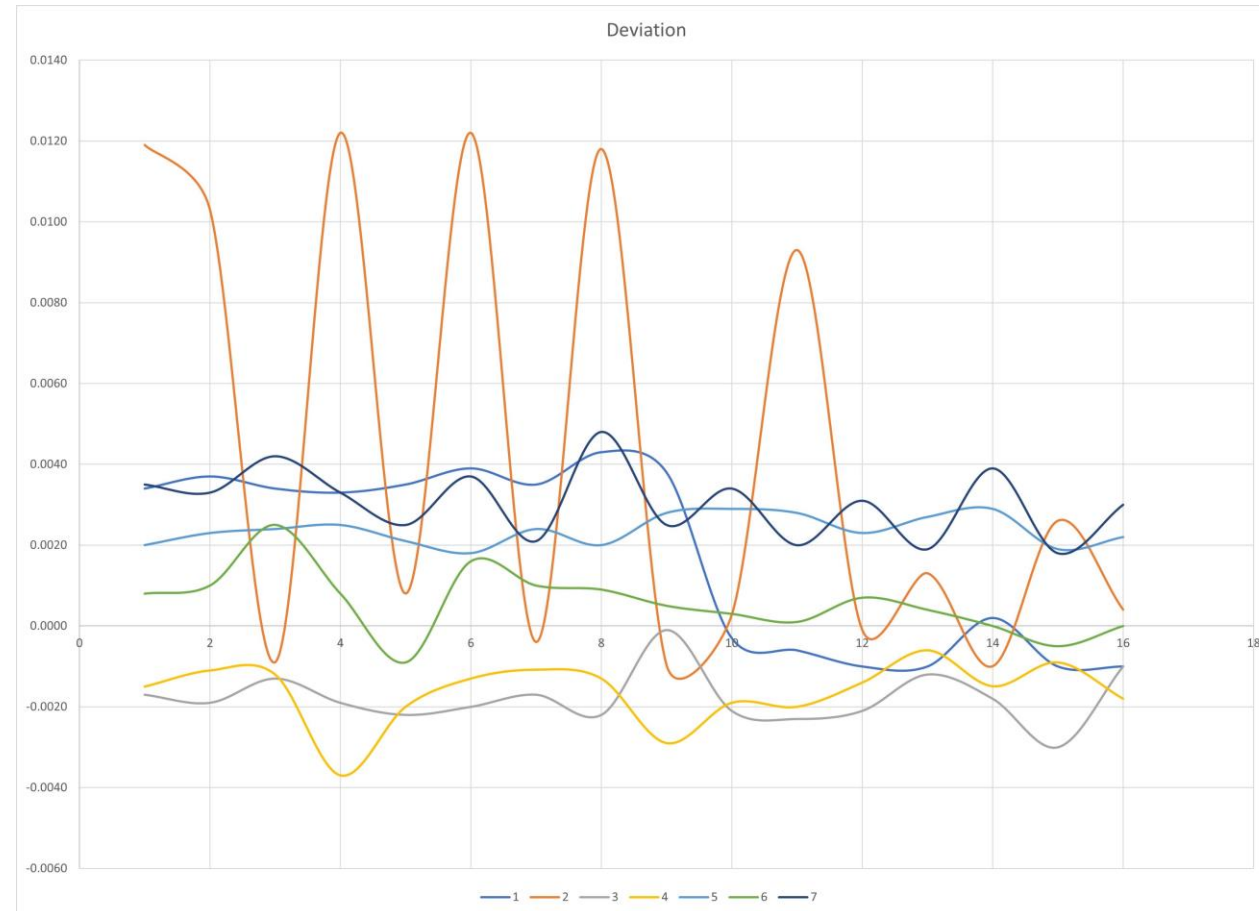
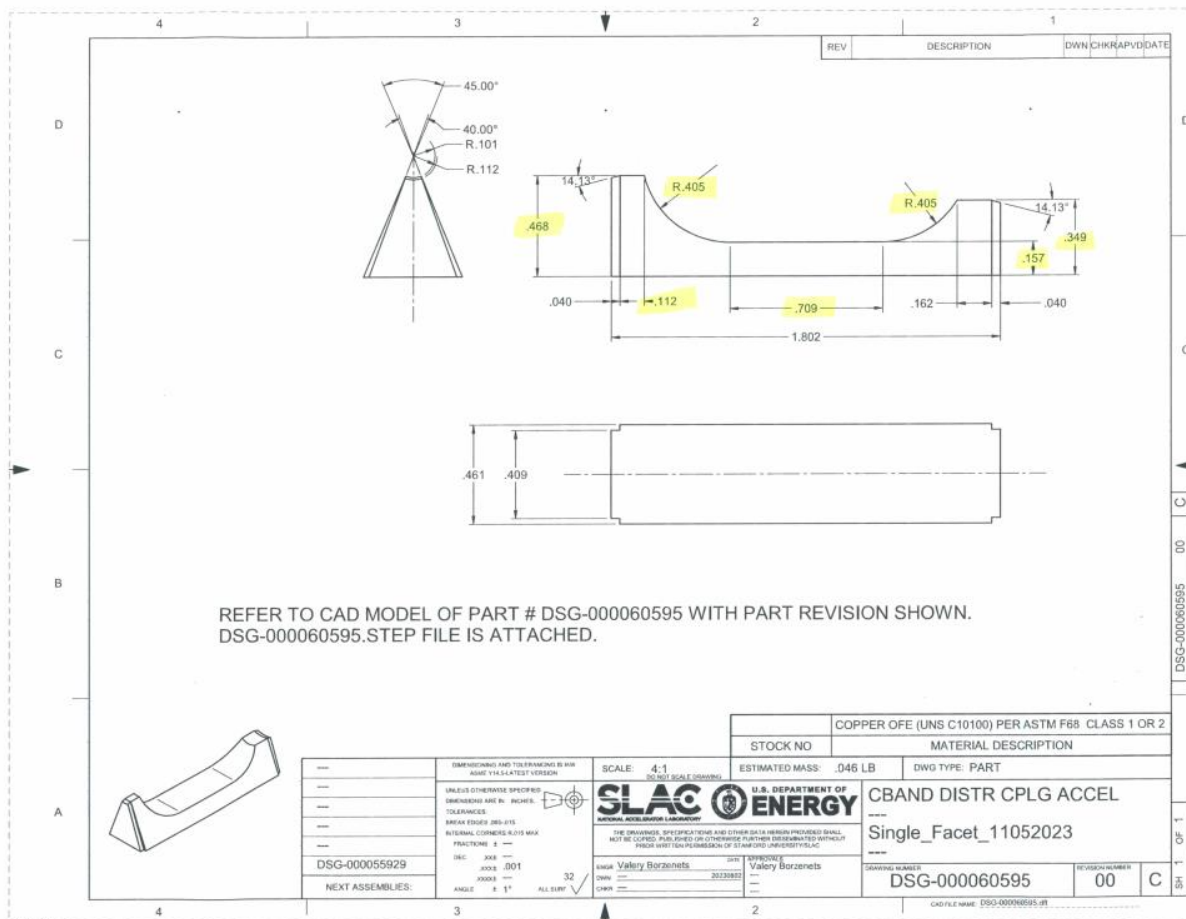
We sent the facets to be measured

- EDM performed metrology



Deviation from design dimensions

- Seven dimensions were measured



The worst variation is the pump out length, which should not impact performance

- We can select the best samples

									Green	<0.001						
									Red	>0.003+/-						
									Yellow	>0.002+/-						
Dim	Description	Nominal	Min Tol	Max Tol	Unit	Part #1	Part #2	Part #3	Part #4	Part #5	Part #6	Part #7	Part #8	Insp By	Date	System
1	Height	0.468	-0.001	0.001	inch	0.4714	0.4717	0.4714	0.4713	0.4715	0.4719	0.4715	0.4723	0605-01	45342	MVi5
2	Length	0.112	-0.001	0.001	inch	0.1239	0.1223	0.1111	0.1242	0.1128	0.1242	0.1116	0.1238	0605-01	45342	MVi5
3	Radius	0.405	-0.001	0.001	inch	0.4033	0.4031	0.4037	0.4031	0.4028	0.403	0.4033	0.4028	0605-01	45342	MVi5
4	Length	0.709	-0.001	0.001	inch	0.7075	0.7079	0.7078	0.7053	0.707	0.7077	0.70792	0.7077	0605-01	45342	MVi5
5	Radius	0.405	-0.001	0.001	inch	0.407	0.4073	0.4074	0.4075	0.4071	0.4068	0.4074	0.407	0605-01	45342	MVi5
6	Height	0.157	-0.001	0.001	inch	0.1578	0.158	0.1595	0.1578	0.1561	0.1586	0.158	0.1579	0605-01	45342	MVi5
7	Height	0.349	-0.001	0.001	inch	0.3525	0.3523	0.3532	0.3523	0.3515	0.3527	0.3511	0.3538	0605-01	45342	MVi5
Dim	Description	Nominal	Min Tol	Max Tol	Unit	Part #9	Part #10	Part #11	Part #12	Part #13	Part #14	Part #15	Part #16	Insp By	Date	System
1	Height	0.468	-0.001	0.001	inch	0.4718	0.4677	0.4674	0.467	0.467	0.4682	0.467	0.467	0605-01	45342	MVi5
2	Length	0.112	-0.001	0.001	inch	0.11103	0.11227	0.1213	0.1119	0.1133	0.111	0.1146	0.1124	0605-01	45342	MVi5
3	Radius	0.405	-0.001	0.001	inch	0.4049	0.4029	0.4027	0.4029	0.4038	0.4032	0.402	0.404	0605-01	45342	MVi5
4	Length	0.709	-0.001	0.001	inch	0.7061	0.7071	0.707	0.7076	0.7084	0.70751	0.7081	0.7072	0605-01	45342	MVi5
5	Radius	0.405	-0.001	0.001	inch	0.4078	0.4079	0.4078	0.4073	0.4077	0.4079	0.4069	0.4072	0605-01	45342	MVi5
6	Height	0.157	-0.001	0.001	inch	0.1575	0.1573	0.1571	0.1577	0.1574	0.157	0.1565	0.157	0605-01	45342	MVi5
7	Height	0.349	-0.001	0.001	inch	0.3515	0.3524	0.351	0.3521	0.3509	0.3529	0.3508	0.352	0605-01	45342	MVi5