



# NGS

National Grid Service



## Next Steps: becoming users of the NGS

Mike Mineter  
[mjm@nesc.ac.uk](mailto:mjm@nesc.ac.uk)

# Policy for re-use

- This presentation can be re-used for academic purposes.
  - However if you do so then please let [training-support@nesc.ac.uk](mailto:training-support@nesc.ac.uk) know. We need to gather statistics of re-use: no. of events, number of people trained.
- Thank you!!

# Goal of talk

- Thus far the emphasis has been on what the NGS is, and how to use its core services.
- The goal of this talk is to ensure that intending users of the NGS know
  - Relevant support services and procedures
  - The steps to be taken to join the NGS



# Becoming an NGS user

- Most NGS users join as individuals
- Free to members of UK academic institutions
- What you can do next:
  1. Obtain a UK e-Science Certificate  
THEN
  2. Apply for access to the NGS
    - You join personally – not as a project

# How Do I Get A Certificate?

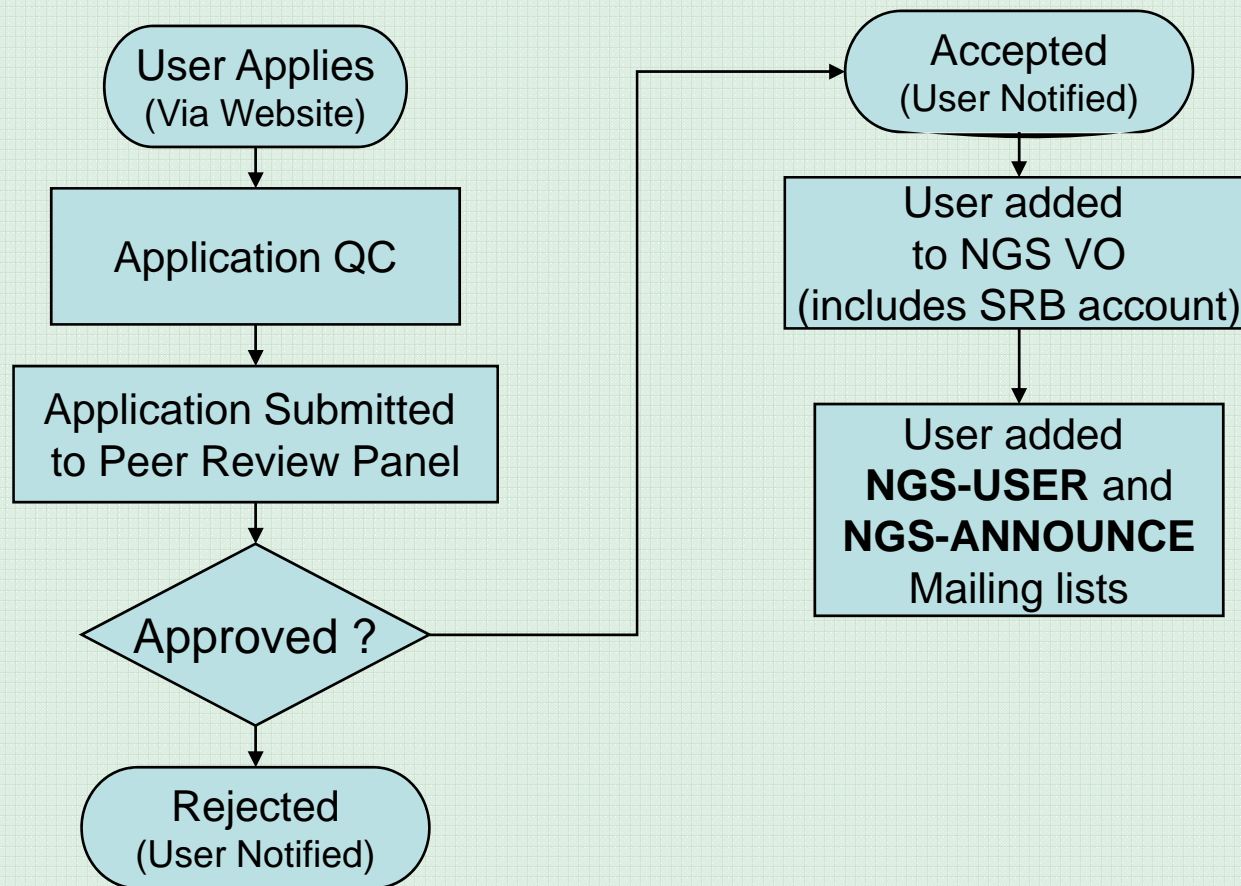
- You need a valid UK certificate before applying for an NGS account:
  - <https://ca.grid-support.ac.uk>, the UK Certificate Authority.
  - You will probably need to provide non-electronic proof of identity to your local representative of the CA.
    - For example: a photocopy of your passport.
    - See <http://www.grid-support.ac.uk/archive/ca/ralist.htm>
  - Ensure that you use the same browser (on the same computer) that you sent the request from to download your certificate.
  - Always keep this certificate secure.
- Follow instructions on UK CA pages
  - and also refer to yesterday's security talk and 1<sup>st</sup> practical.



# Apply for access to the NGS

- Via [www.ngs.ac.uk/access](http://www.ngs.ac.uk/access)
- You need a UK e-science certificate before you apply
- Simple web form
  - Specify cpu time, storage you want
  - Make best guesses!
  - You can apply for extra quota later on
  - Be aware that:
    - your university is invited to contribute resources so that the NGS can scale and support you and your colleagues as users

# User Registration





# Access to data services

- With your NGS account, you get
  - SRB account
- Can apply for an Oracle account





# Joining NGS as a VO

- Currently most NGS users join as individuals
- VO support is being developed
- VOMS is now deployed
  - Credentials of VO membership are held as extensions in your proxy certificate
  - Resources will be able to allow/deny access based on these credentials
- Talk to NGS
- Currently, VOs supported on case-by-case
  - Procedures are being established

# Accessing the NGS

- Determine your options for running grid commands
- Use GISSSH
- Ideally:
  - Set up equivalent of `training-ui.nesc.ac.uk`
- Or use RB's User Interface
- If you can do nothing else:
  - Use connect to NGS core nodes
  - Not elegant!! Compute nodes should not be user interfaces



# Resource providers

Resource providers join the NGS by

- Defining level of service commitments
- Adopting NGS acceptable use and security policies
- Run compatible middleware
  - as defined by NGS Minimum Software Stack
  - and verified by compliance test suite
- Support monitoring and accounting

Two levels of membership

1. Affiliates run compatible stack, integrated support
2. Partners also contribute “significant resources”

# How to get help

- NGS web site: <http://www.ngs.ac.uk>
- Helpdesk: follow “help” links
- Wiki: <http://wiki.ngs.ac.uk/>
- From the community of NGS users
  - Email NGS users list

# More training?

- Watch <http://www.nesc.ac.uk/training/events>
- Also <http://www.nesc.ac.uk/esi/esi.html>
- Digital Library: <http://egee.lib.ed.ac.uk/>
- Come back tomorrow!

## TELL US WHAT YOU WANT !!!!

- In future versions of this course
- In application developer courses
- .....
- Email: [training-support@nesc.ac.uk](mailto:training-support@nesc.ac.uk)