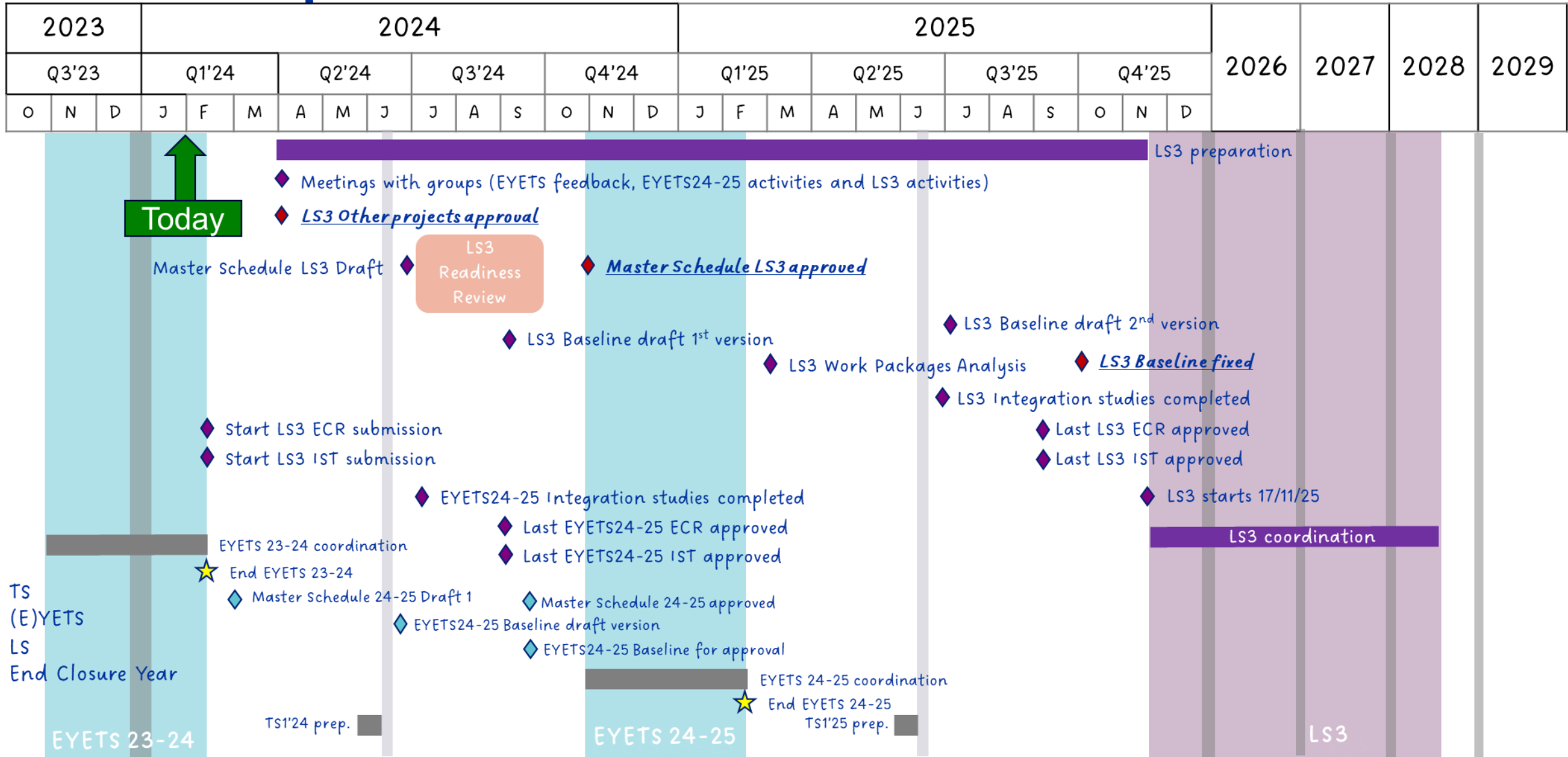




LS3 preparations

06 March 2024

LS3 roadmap



Global CERN timelines



The way to the LS3 Readiness Review

- List of projects to be considered for LS3
- All LS3 activities entered in PLAN *including non-approved ones with a specific flag*

- MTP approval i.e. final list of approved projects (hopefully very closed to the previous list)
- End of resources allocation in PLAN

- Groups/departments to confirm readiness and availability of resources or identify issues

LS3 RR
Are we (Will we be) ready for LS3 ?

31.03.2024

Mid-June 2024

30.06.2024

Early Sept 2024

LS3 committee meetings

Projects: Timeline, status of resources availabilities and integration in the LS3 schedule to identify possible issues
→ Iterative process by LS3 team to propose mitigation measures

LS3 team to propose mitigation measures

The injectors must remain aligned with the global CERN timelines



2024-02-01

Chamonix Workshop 2024

55

PLAN tool : plan.cern.ch

Everyone should have EN-EL in the resources

Activity 12952 - AWAKE laser beam lines

General | Schedule | Resources | Comments | Documents | Data Quality | History

Status: Resource Allocation | Resource Allocation

Title*
AWAKE laser beam lines

Type
Consolidation & upgrade/Other

Responsible group*
SY-STI Sources, Targets & Interactions Group

Project/Study*
AWAKE-EXP - AWAKE Experiment

Facilities
AWAKE

Location

Goal
Design, construction and installation of AWAKE run 2 laser beamlines

Impact if not done / postponed
AWAKE Run2c not possible.

Created On: 08-Apr-2022 16:17:27
Created By: SVEN DE MAN (SY-STI-RBS)
Last Updated On: 04-Mar-2024 19:24:12
Last Updated By: DIMITRIOS KATSANIKOS (EN-EL-EPM)

Responsible*
EDUARDO GRANADOS MATEO SY-STI-LP

Priority 1
4. Approved projects

General | Schedule | Resources | Comments | Documents | Data Quality | History

Status: Resource Allocation | Resource Allocation

Preparation

Proposed Periods: EYETS2024-25
Duration: 3 Months
Accepted Periods: EYETS2024-25

Installation

Proposed Periods: LS3
Duration: 15 Months
Accepted Periods: LS3

Constraints on Material

No constraints on material.

Commissioning

Proposed Periods: LS3
Duration: 9 Months
Accepted Periods: LS3

General | Schedule | Resources | Comments | Documents | Data Quality

SY-STI Resources for Coordination

#27815 SY-STI Reso

Personnel - Staff, Collabor

Description

Material

Description

External Links

1: Preparation

- BE-ABP project coordination
- BE-CEM control system
- BE-GM reference points definition
- EN-AA safety system for laser
- EN-ACE integration and scheduling
- EN-EL Signal cabling
- EN-EL AC power distribution
- EN-MME design
- SY-BI laser diagnostics
- SY-RF RF SIGNALS
- TE-VSC vacuum system

2: Installation

- BE-CEM control system installation
- BE-GM Component alignment
- EN-AA access system for laser system and other safety syst...
- EN-ACE Planning and coordination
- EN-EL Signal cabling
- EN-EL AC power distribution

PLAN activities

To be filled before 31.03.2024

CP	Description	PLAN																								
CP1	SPS beam, RF timing	one PLAN activity «Upgrade of SPS beam and RF timing in AWAKE»																								
CP2	Proton & Electron beam lines	One PLAN activity «installation of proton and electron lines in AWAKE» Or two PLAN: “installation of proton line in AWAKE” + “installation of electron lines in AWAKE” + PLAN activity for EPC ? “new converters for AWAKE” ? + PLAN activity for magnets ?																								
CP3	Electron source	<table border="1"> <tr> <td>12205</td> <td>Installations of new Injector and high power RF equipment in AWAKE</td> <td>SY-RF</td> <td>STEFFEN DOEBERT (SY-RF-MKS)</td> <td>AWAKE-EXP</td> <td>Buildings And Other Facilities</td> <td>EN-ACE-OSS, EN-HE-HH, SY-BI-BP, SY-EPC, SY-RF-CS, SY-RF-FB, SY-RF-MKS, SY-STI-LP, TE-MS, TE-VSC-BVO</td> </tr> </table>	12205	Installations of new Injector and high power RF equipment in AWAKE	SY-RF	STEFFEN DOEBERT (SY-RF-MKS)	AWAKE-EXP	Buildings And Other Facilities	EN-ACE-OSS, EN-HE-HH, SY-BI-BP, SY-EPC, SY-RF-CS, SY-RF-FB, SY-RF-MKS, SY-STI-LP, TE-MS, TE-VSC-BVO																	
12205	Installations of new Injector and high power RF equipment in AWAKE	SY-RF	STEFFEN DOEBERT (SY-RF-MKS)	AWAKE-EXP	Buildings And Other Facilities	EN-ACE-OSS, EN-HE-HH, SY-BI-BP, SY-EPC, SY-RF-CS, SY-RF-FB, SY-RF-MKS, SY-STI-LP, TE-MS, TE-VSC-BVO																				
CP4	Infrastructure	<table border="1"> <tr> <td>12288</td> <td>AWAKE - Upgrade project for the run 2 - PJ_389</td> <td>EN-CV</td> <td>ALEJANDRO MEJICA RODRIGUEZ (EN-CV-PJ)</td> <td>4. Approved projects</td> <td>AWAKE-EXP</td> <td>AWAKE</td> </tr> <tr> <td>13495</td> <td>WIC for AWAKE phase 2</td> <td>TE-MPE</td> <td>RICHARD MOMPO (TE-MPE-MI)</td> <td>6. Others</td> <td>AWAKE-EXP</td> <td>AWAKE</td> <td>BE-ICS, EN-EL</td> </tr> <tr> <td>12443</td> <td>RP AWAKE LS3</td> <td>HSE-RP</td> <td>JEREMY ROSSET-LANCHET (HSE-RP-IL)</td> <td>6. Others</td> <td>AWAKE-EXP</td> <td>AWAKE</td> <td>EN-EL, IT-CS-DO</td> </tr> </table>	12288	AWAKE - Upgrade project for the run 2 - PJ_389	EN-CV	ALEJANDRO MEJICA RODRIGUEZ (EN-CV-PJ)	4. Approved projects	AWAKE-EXP	AWAKE	13495	WIC for AWAKE phase 2	TE-MPE	RICHARD MOMPO (TE-MPE-MI)	6. Others	AWAKE-EXP	AWAKE	BE-ICS, EN-EL	12443	RP AWAKE LS3	HSE-RP	JEREMY ROSSET-LANCHET (HSE-RP-IL)	6. Others	AWAKE-EXP	AWAKE	EN-EL, IT-CS-DO	
12288	AWAKE - Upgrade project for the run 2 - PJ_389	EN-CV	ALEJANDRO MEJICA RODRIGUEZ (EN-CV-PJ)	4. Approved projects	AWAKE-EXP	AWAKE																				
13495	WIC for AWAKE phase 2	TE-MPE	RICHARD MOMPO (TE-MPE-MI)	6. Others	AWAKE-EXP	AWAKE	BE-ICS, EN-EL																			
12443	RP AWAKE LS3	HSE-RP	JEREMY ROSSET-LANCHET (HSE-RP-IL)	6. Others	AWAKE-EXP	AWAKE	EN-EL, IT-CS-DO																			
CP5	Laser beam line	<table border="1"> <tr> <td>12952</td> <td>AWAKE laser beam lines</td> <td>SY-STI</td> <td>EDUARDO GRANADOS MATEO (SY-STI-LP)</td> <td>4. Approved projects</td> <td>AWAKE-EXP</td> <td>AWAKE</td> <td>BE-ABP, BE-CEM, BE-GM, EN-AA, EN-ACE, EN-EL, EN-MME, SY-BI, SY-RF, TE-VSC</td> </tr> </table>	12952	AWAKE laser beam lines	SY-STI	EDUARDO GRANADOS MATEO (SY-STI-LP)	4. Approved projects	AWAKE-EXP	AWAKE	BE-ABP, BE-CEM, BE-GM, EN-AA, EN-ACE, EN-EL, EN-MME, SY-BI, SY-RF, TE-VSC																
12952	AWAKE laser beam lines	SY-STI	EDUARDO GRANADOS MATEO (SY-STI-LP)	4. Approved projects	AWAKE-EXP	AWAKE	BE-ABP, BE-CEM, BE-GM, EN-AA, EN-ACE, EN-EL, EN-MME, SY-BI, SY-RF, TE-VSC																			
CP6	Beam instrumentation	<table border="1"> <tr> <td>13737</td> <td>AWAKE 18 MeV electron line new instrument layout</td> <td>SY-BI</td> <td>STEFANO MAZZONI (SY-BI-PM)</td> <td></td> <td>AWAKE-EXP</td> <td>AWAKE</td> <td>EN-EL, EN-HE, EN-MME, SY-ABT, TE-VSC</td> </tr> <tr> <td>13736</td> <td>AWAKE TT41 instrument layout modifications</td> <td>SY-BI</td> <td>STEFANO MAZZONI (SY-BI-PM)</td> <td></td> <td>AWAKE-EXP</td> <td>AWAKE</td> <td>EN-EL, EN-HE, EN-MME, SY-ABT, TE-VSC</td> </tr> <tr> <td>13735</td> <td>AWAKE 150 MeV electron line new beam instrumentation</td> <td>SY-BI</td> <td>STEFANO MAZZONI (SY-BI-PM)</td> <td></td> <td>AWAKE-EXP</td> <td>AWAKE</td> <td>BE-GM, EN-EL, EN-HE, EN-MME, SY-ABT, TE-VSC</td> </tr> </table>	13737	AWAKE 18 MeV electron line new instrument layout	SY-BI	STEFANO MAZZONI (SY-BI-PM)		AWAKE-EXP	AWAKE	EN-EL, EN-HE, EN-MME, SY-ABT, TE-VSC	13736	AWAKE TT41 instrument layout modifications	SY-BI	STEFANO MAZZONI (SY-BI-PM)		AWAKE-EXP	AWAKE	EN-EL, EN-HE, EN-MME, SY-ABT, TE-VSC	13735	AWAKE 150 MeV electron line new beam instrumentation	SY-BI	STEFANO MAZZONI (SY-BI-PM)		AWAKE-EXP	AWAKE	BE-GM, EN-EL, EN-HE, EN-MME, SY-ABT, TE-VSC
13737	AWAKE 18 MeV electron line new instrument layout	SY-BI	STEFANO MAZZONI (SY-BI-PM)		AWAKE-EXP	AWAKE	EN-EL, EN-HE, EN-MME, SY-ABT, TE-VSC																			
13736	AWAKE TT41 instrument layout modifications	SY-BI	STEFANO MAZZONI (SY-BI-PM)		AWAKE-EXP	AWAKE	EN-EL, EN-HE, EN-MME, SY-ABT, TE-VSC																			
13735	AWAKE 150 MeV electron line new beam instrumentation	SY-BI	STEFANO MAZZONI (SY-BI-PM)		AWAKE-EXP	AWAKE	BE-GM, EN-EL, EN-HE, EN-MME, SY-ABT, TE-VSC																			
CP7	Plasma cell technology																									

Cabling requests

To be sent before 31.03.2024

- EN-EL cabling/de-cabling in preparation of LS3.
 - o EL is preparing a memorandum asking for inputs for cabling and de-cabling activities
 - o These activities (cabling/de-cabling/fibers, ...) must be requested by the groups to EN-EL before the 31st March 2024.
 - o **Please invite Dimitrios to the coordination meeting**, to present the EL strategy for LS3 (de)-cabling activities, as soon as possible
 - o **EL cabling team is able to give a feedback on the corresponding LS3 activities by mid April 2024**
- Electrical Network activities:
 - o A new structure is being implemented by EN-EL and will be communicated in the coming weeks
 - o **The electrical network activities will be ready for presentation by MID-APRIL 2024**
 - o The presentation from EL for the LS3 activities must be foreseen after mid-April, in the frame of the LS3 preparation

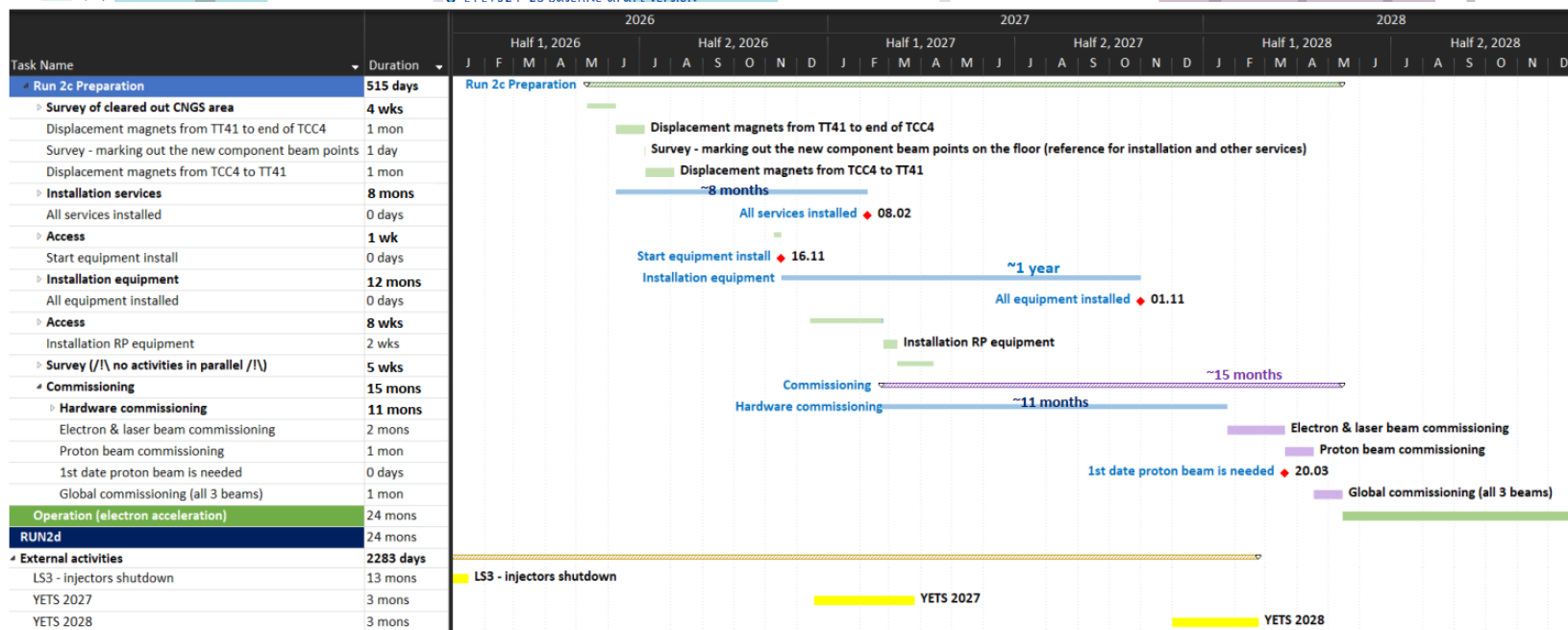
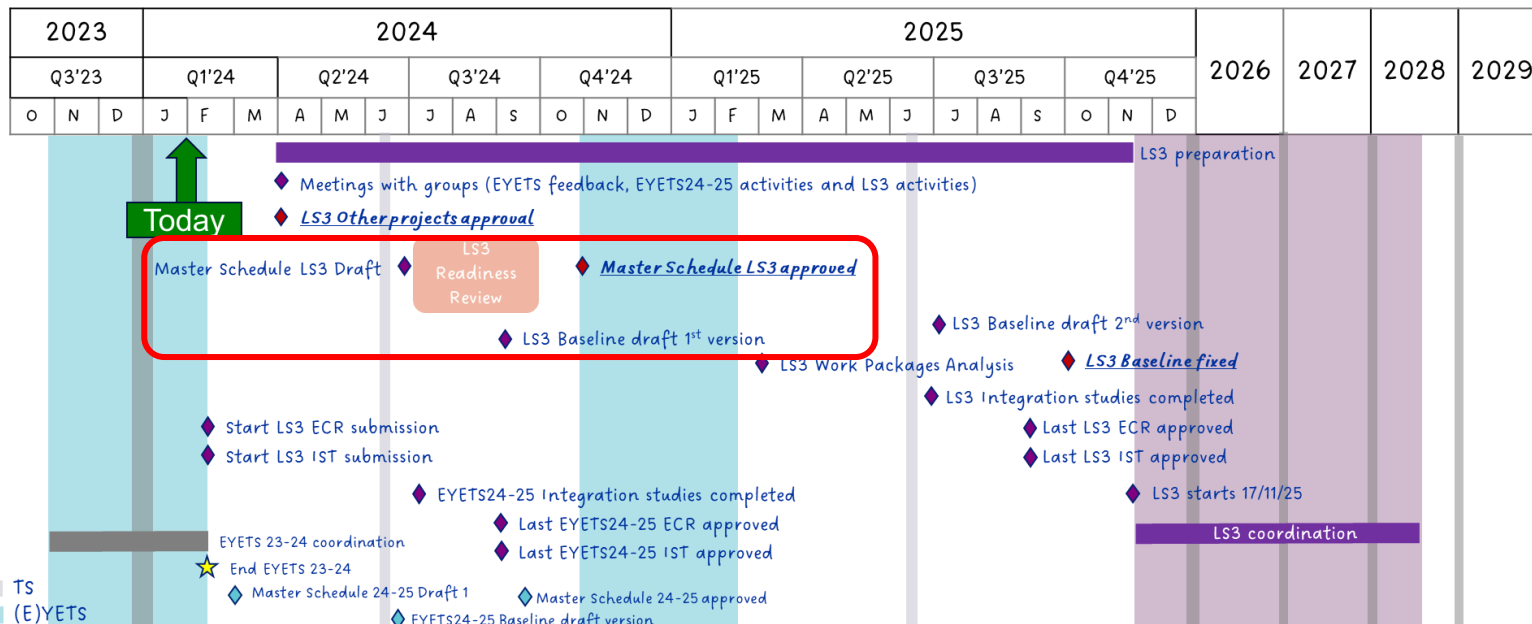
Important dates for AWAKE:

- **Cabling request deadline = 31.03.2024**
- Electrical network facility deadline = April 2024 ?

AWAKE run 2c installation schedule

Draft planning expected for June 2024

- The LS3 roadmap foresees:
 - Master schedule by June 2024
 - LS3 readiness review September 2024
- For AWAKE, this means:
 - Review of run2c schedule
 - Identify which groups intervenes when
 - Probable bottlenecks = EN-EL & EN-CV activities for 2026



Summary

- **Before 31.03.2024:**
 - Send **cabling requests** to EN-EL
 - Enter your activity in **PLAN**
- **In the coming months, to be finalised by June:**
 - Review **run2c installation schedule**