



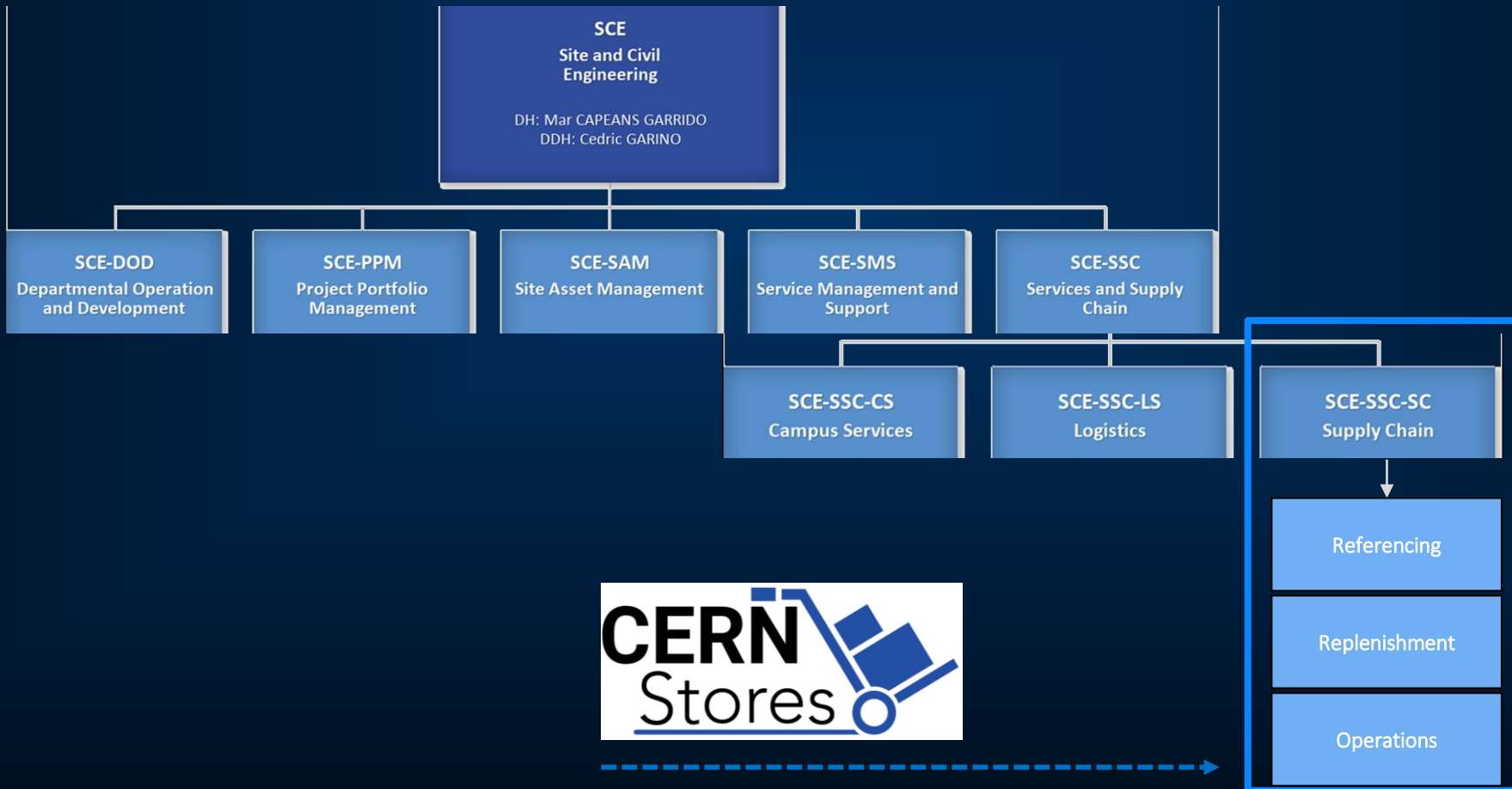
CERN Stores Referencing

SCE. Site & Civil Engineering

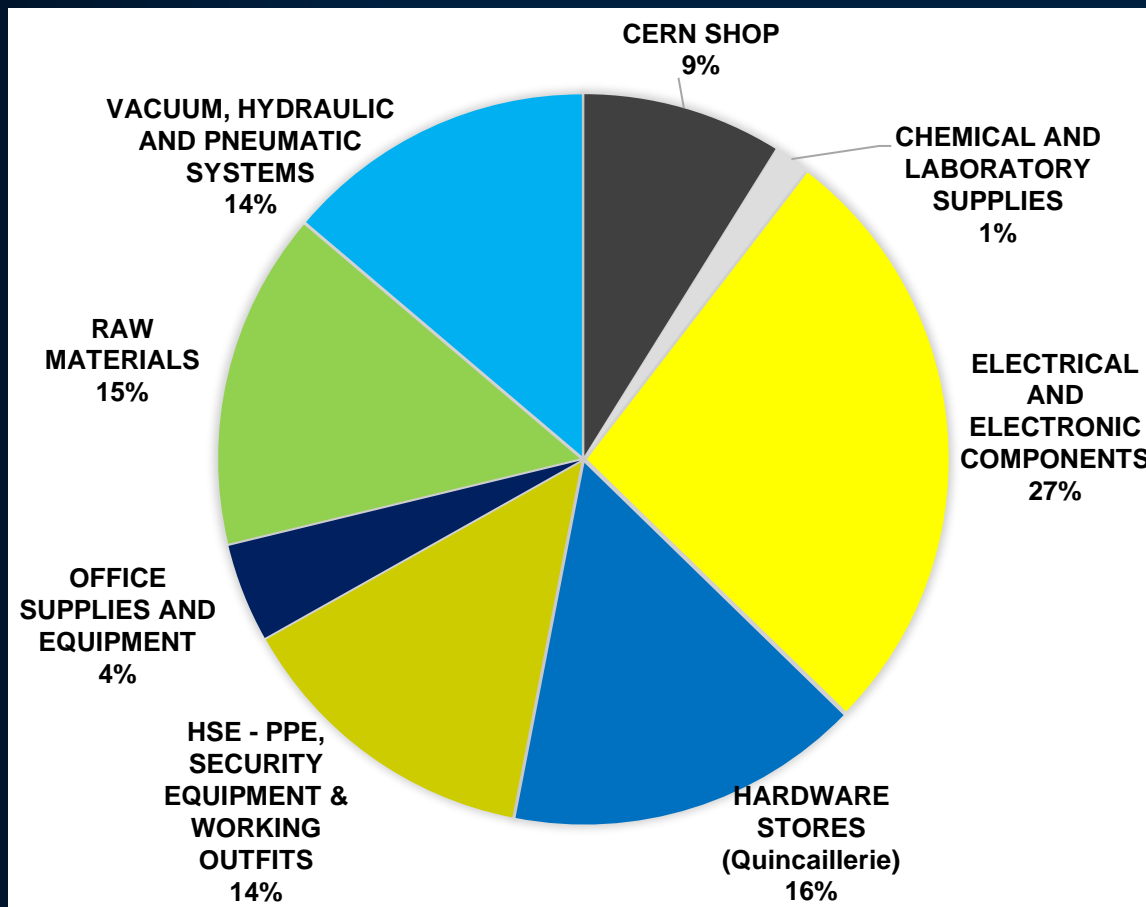
Manages and develops CERN's real estate assets and infrastructures

According to scientific and operations department strategy

Supporting CERN community advancing the scientific programs



The CERN Store: facts & figures



1970: CERN Stores creation

~13.000 items

~10.000 items available in stock

~13 PunchOut catalogues



High standard campus experience



Optimal industrial supply chain execution



Rationalized, efficient, and transparent services

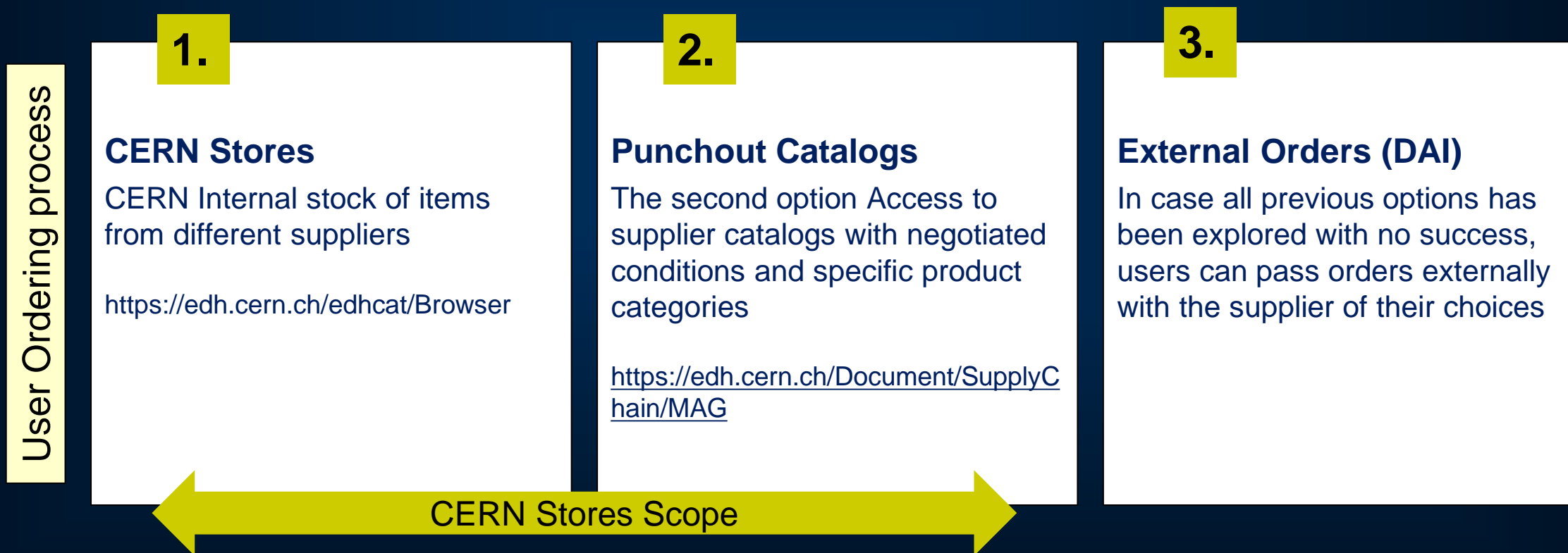


Ensure availability, optimal lead time, traceability, quality and best value for CERN's community !

The CERN Store: facts & figures

Supply Chain objectives:

- Focus on strategic items – technically, high value or turnover
- Simplify the Stores management process and secure the supply internally



#1 Referencing Team

		Product Family	Standardization Sub-Committee	Punch Out Technical Management
Leila Akhouay	Material Manager	Raw Material > Metallic & non-metallic, Vacuum, Chemicals	RAW Material and Vacuum	Vacuum
Coralie Launay	Material Manager	HSE & PPE, Lab Equipment & Consumables, Office Furniture & Equipment, Piping & Tubing, Gas Pressure	-	Office Supplies
Didier Steyaert	Coordinator Material Manager	Cables & Electronics, Electricity, Hardware & Coatings, Racks, IT	Cable and Connectors	Electronic Components, Tools, Fasteners



Supply strategy



Material management

Technical revisions, technical specifications, catalog panel management



Contract management (~100)



Sourcing

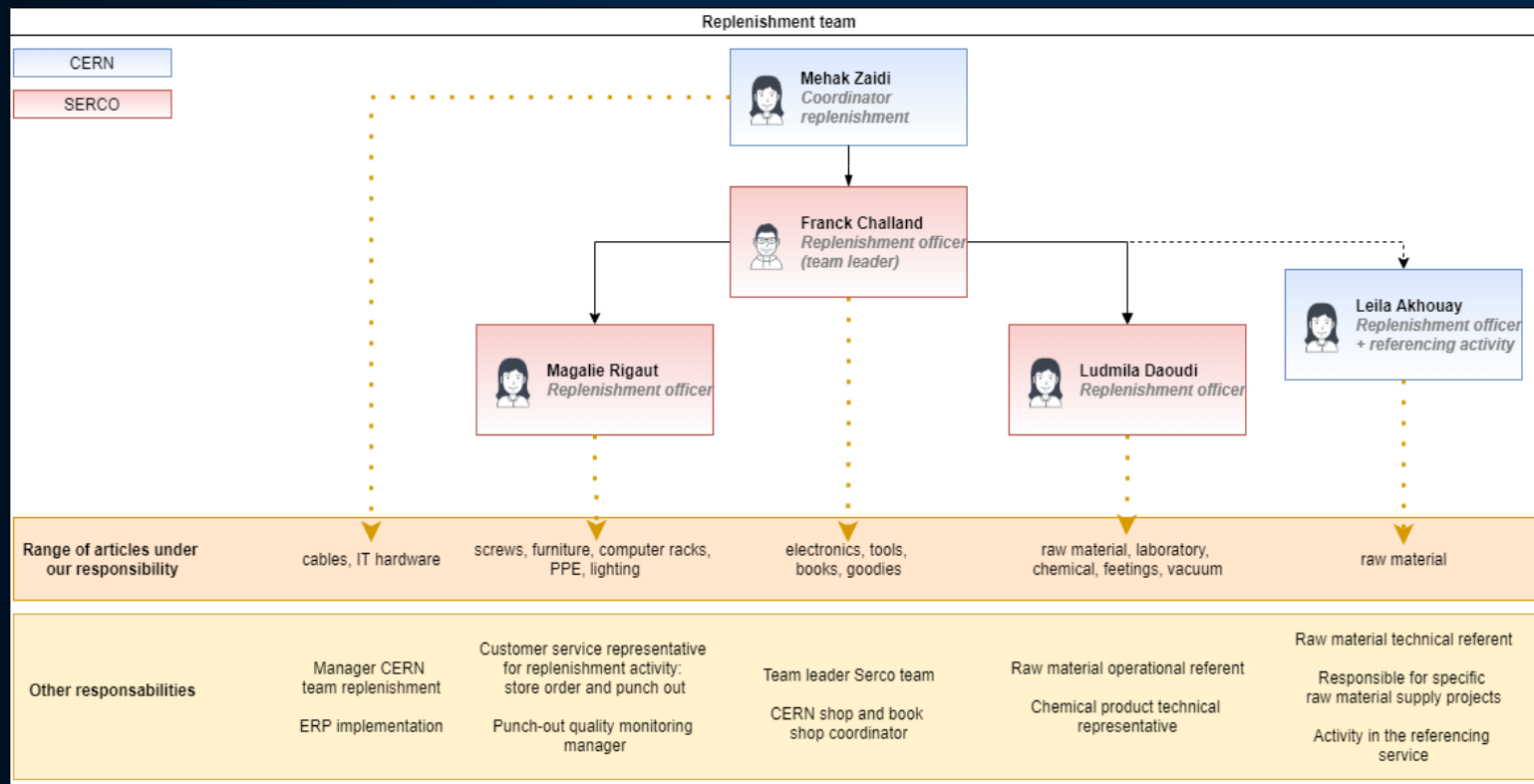


Technical support and guidance



Performance monitoring

#2 Replenishment Team



Stocks inventory and management



Orders management and follow-up



Quality litigations coordination



CERN Stores and PunchOut customer service
Material returns, delivery delay requests, quality issues, stock inquiries, etc.

Thank You!