

DDM Dashboard 2.0

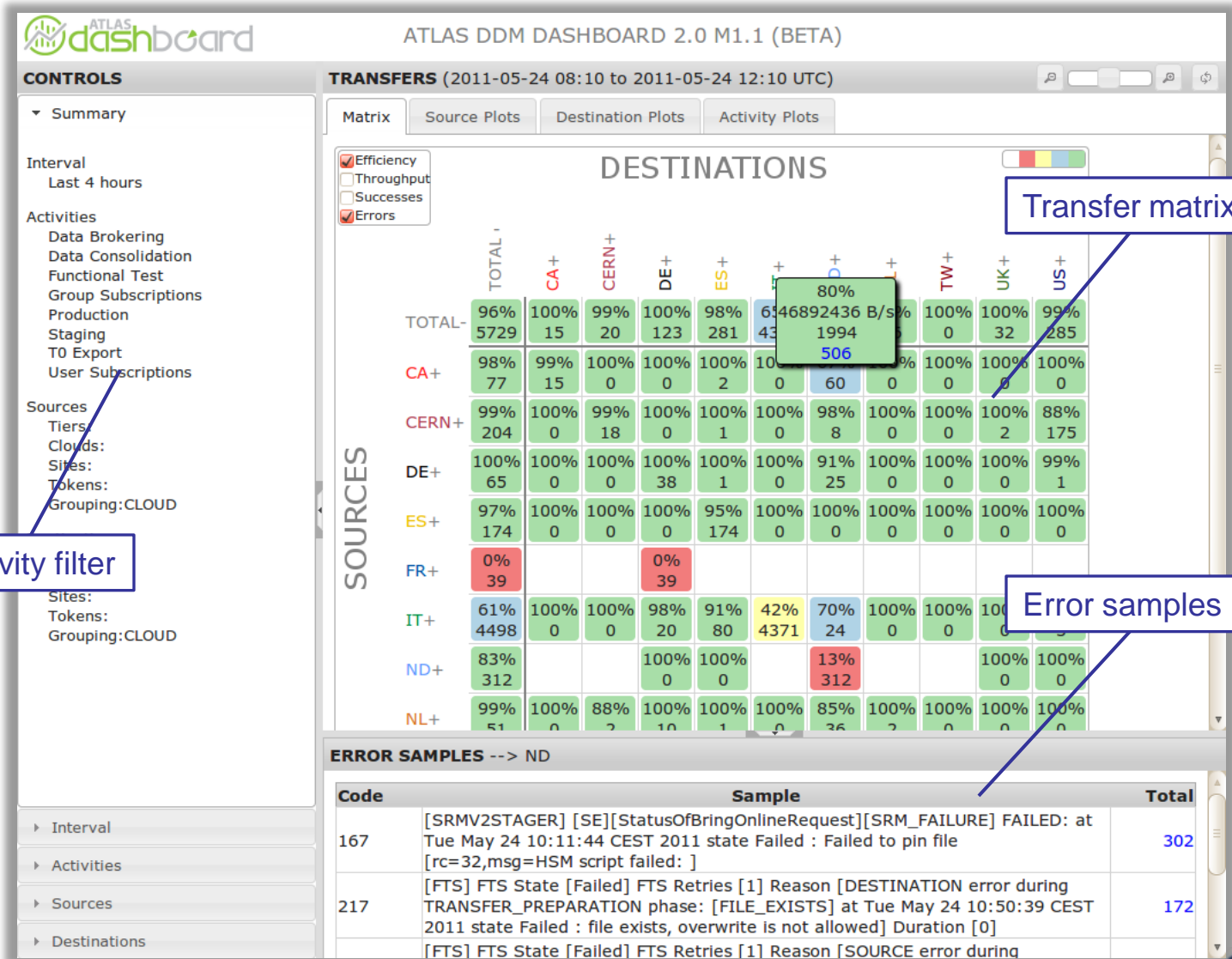
IT-ES-DNG Section Meeting 24 May 2011

David Tuckett

- Quick Look
- Architecture
- Implementation Notes
- Plug-ins
- End Notes



- 2.0 M1.1 (May 2011)
 - Matrix of transfers by source & destination
 - Error samples
 - Client-side Model-View-Controller architecture
 - Full bookmarking support
 - Plots of transfers by source, destination & activity
 - Filtering by activity
 - Filtering by tier / cloud / site / token
 - Grouping by tier / cloud / site / token

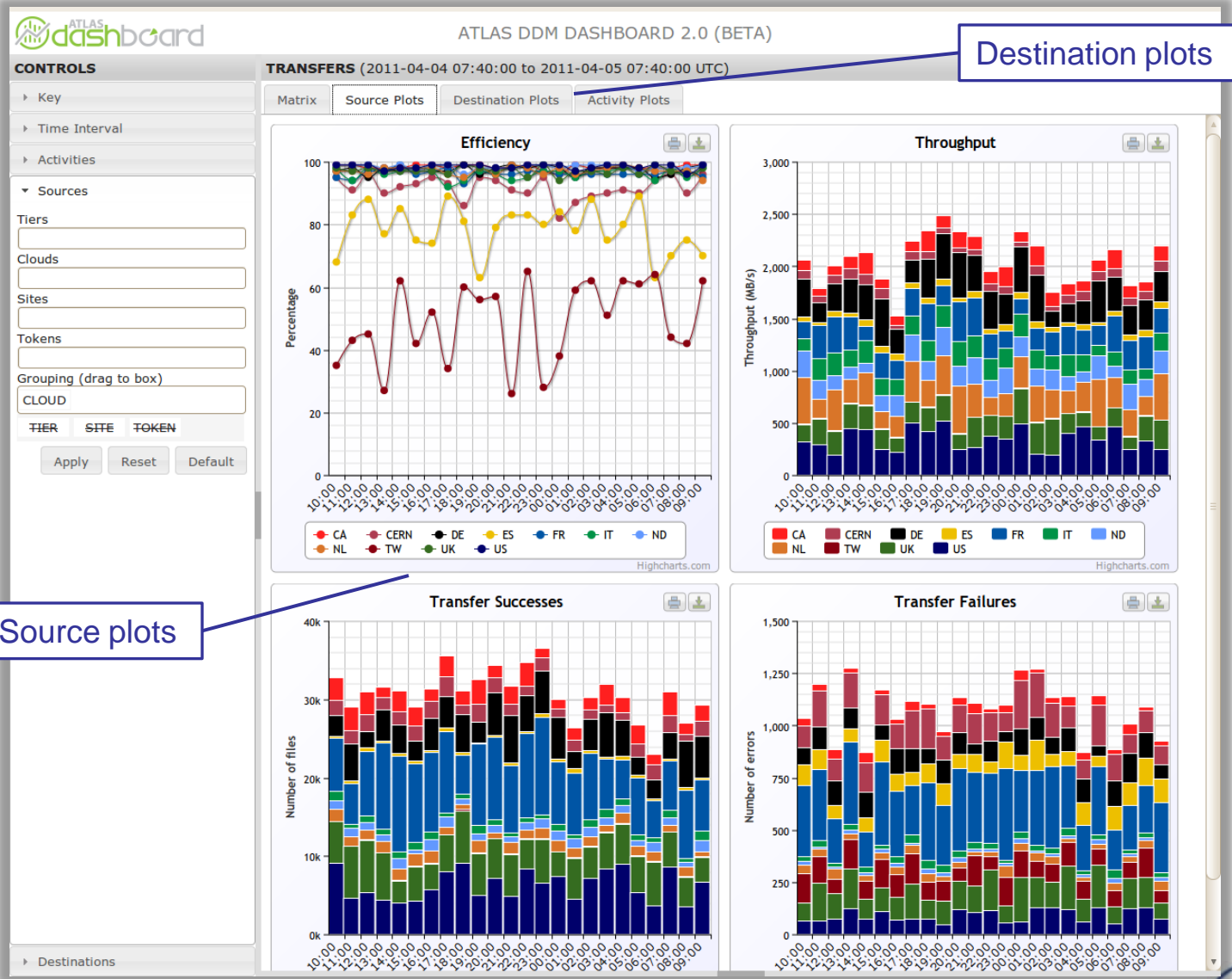


Activity filter

Transfer matrix

Error samples

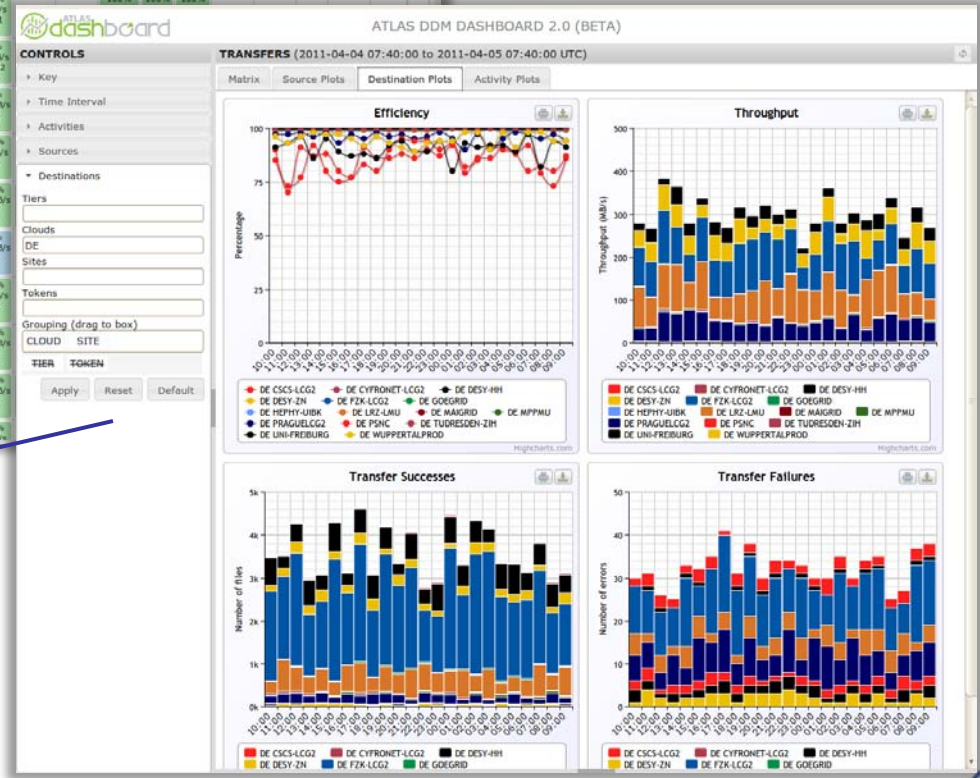
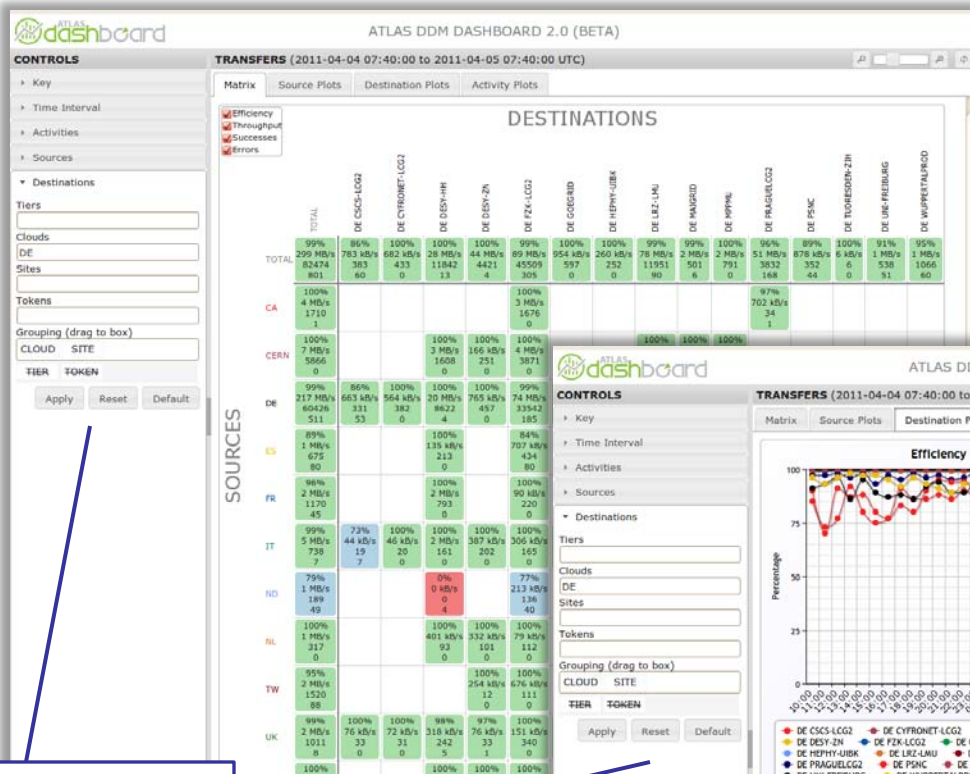




Source plots

Destination plots

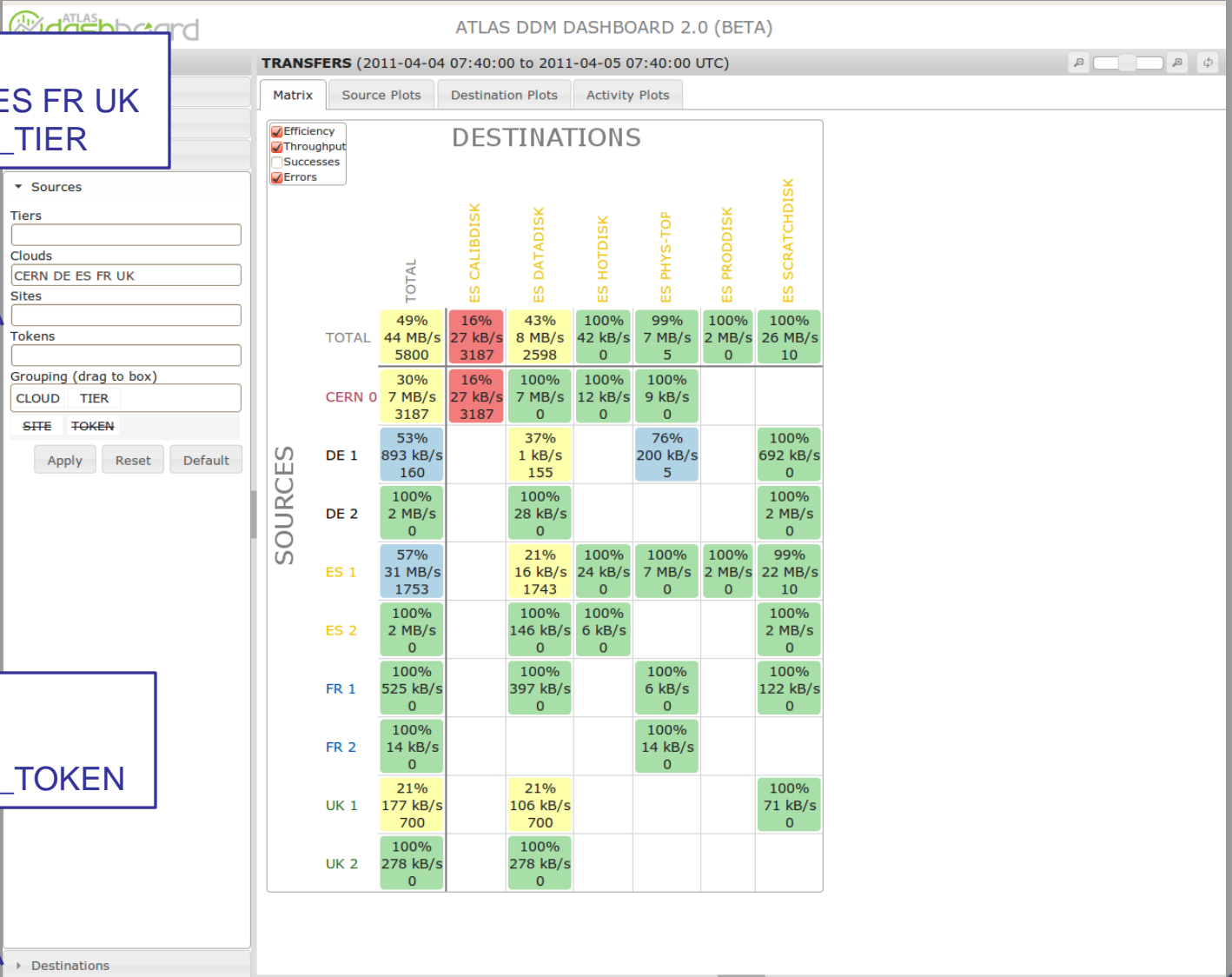




Destination filters:
Cloud = DE
Grouping = CLOUD_SITE



Source filters:
 Cloud = CERN DE ES FR UK
 Grouping = CLOUD_TIER



Destination filters:
 Cloud = ES
 Grouping = CLOUD_TOKEN

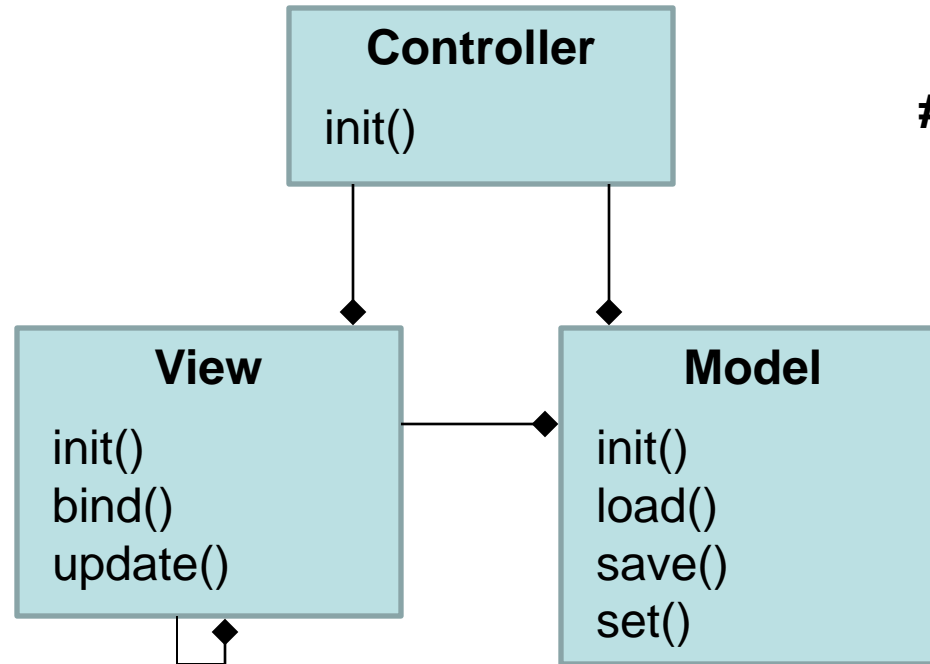
Source filters:
 Cloud = CERN DE ES FR UK
 Grouping = CLOUD_TIER

Destination filters:
 Cloud = ES
 Grouping = CLOUD_TOKEN



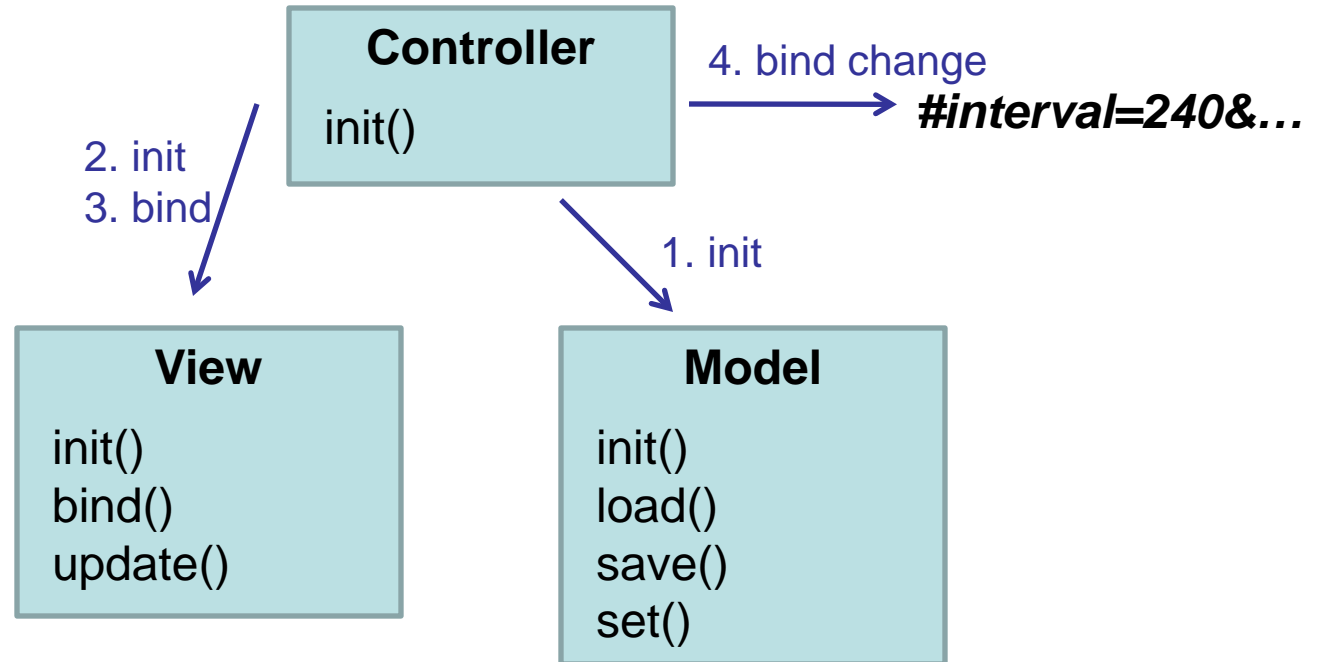
(Smoke and mirrors disclaimer: plot data are not real)

- Client-side MVC (thanks Lukasz)

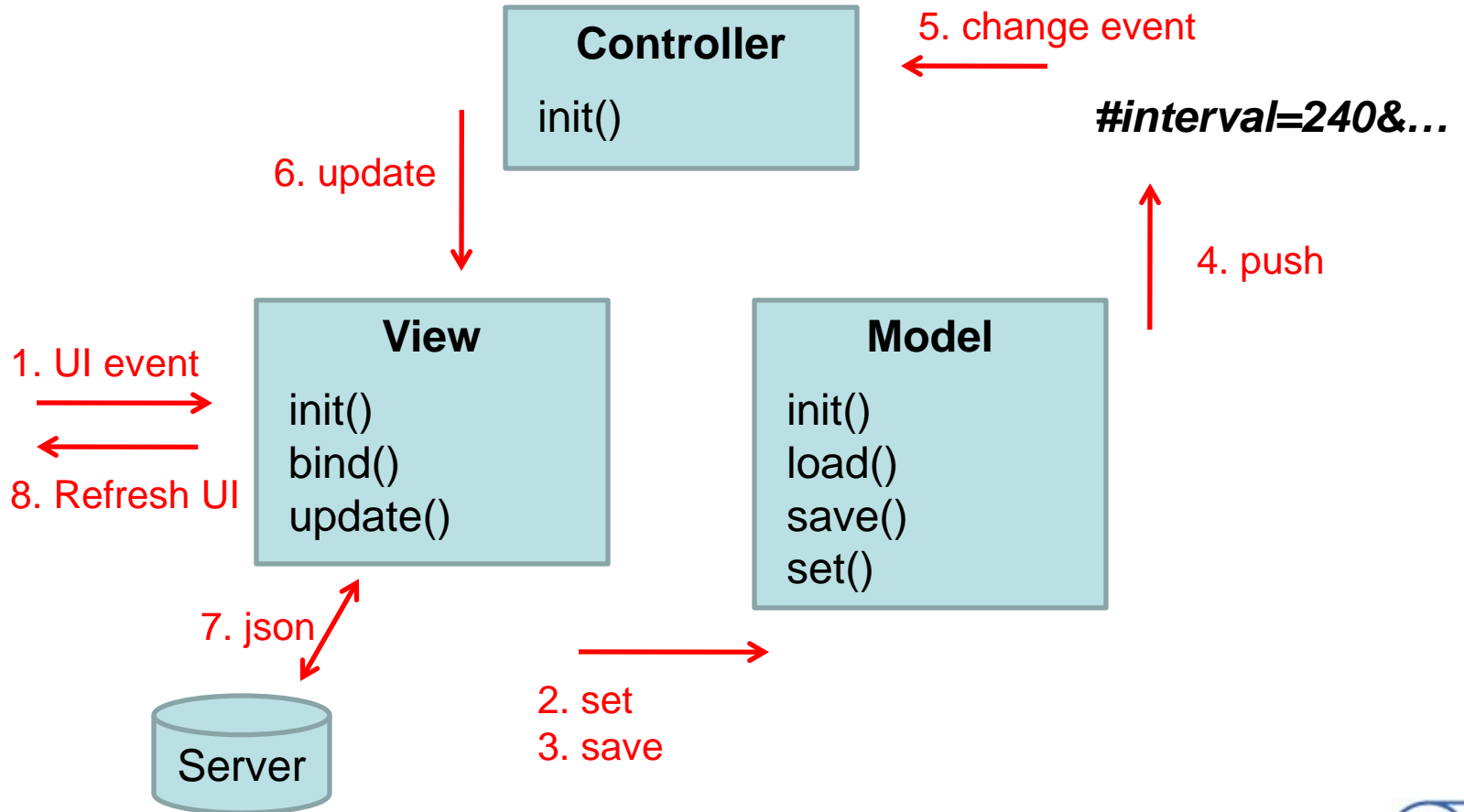


#interval=240&...

- Initialization



- Flow



- Short URL hash
 - Model has defaults & convertors
 - Model only pushes non-default values
 - Arrays automatically converted to (v1,v2)
 - Custom convertors (e.g. for dates)
- Only hit server when necessary
 - Views store parameters used in last server hit
 - Views only hit again if parameters changed
- Tuning JavaScript
 - Use profiler e.g. Chrome Developer Tools
 - Manipulate detached DOM then add in one shot

- jQuery BBQ
<http://benalman.com/projects/jquery-bbq-plugin/>
- Highcharts
<http://www.highcharts.com/>
- jQuery UI.Layout
<http://layout.jquery-dev.net/>
- NETEYE Activity Indicator
<http://neteye.github.com/activity-indicator.html>
- Pines Notify
<http://pines.sourceforge.net/pnotify/>
- Underscore.js
<http://documentcloud.github.com/underscore/>

- Future
 - Generic MVC framework
 - Use existing framework
 - Make this framework reusable
 - Evaluate templating libraries
- Try it out
<http://dashb-atlas-data.cern.ch/dashboard/ddm2/>
- Thanks to Michal and Lukasz