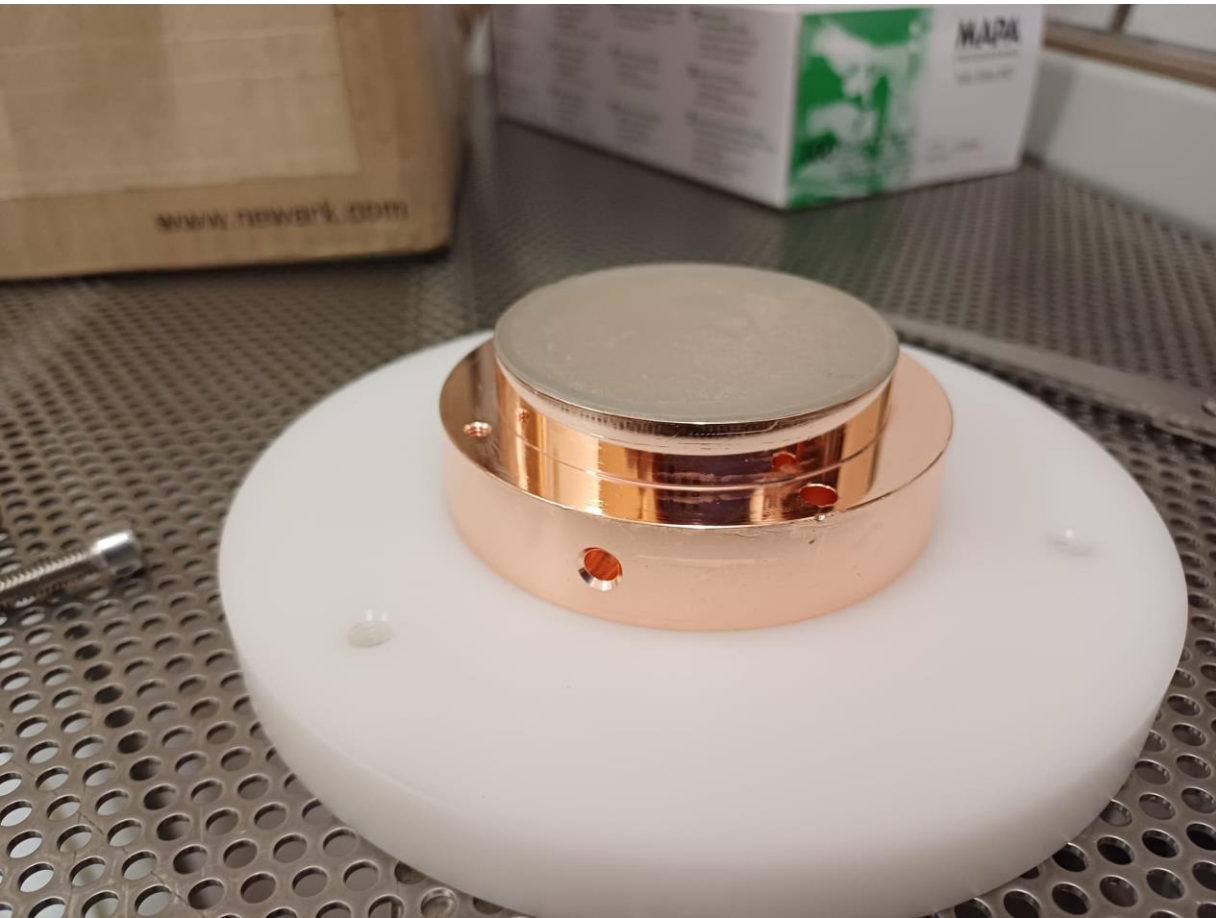


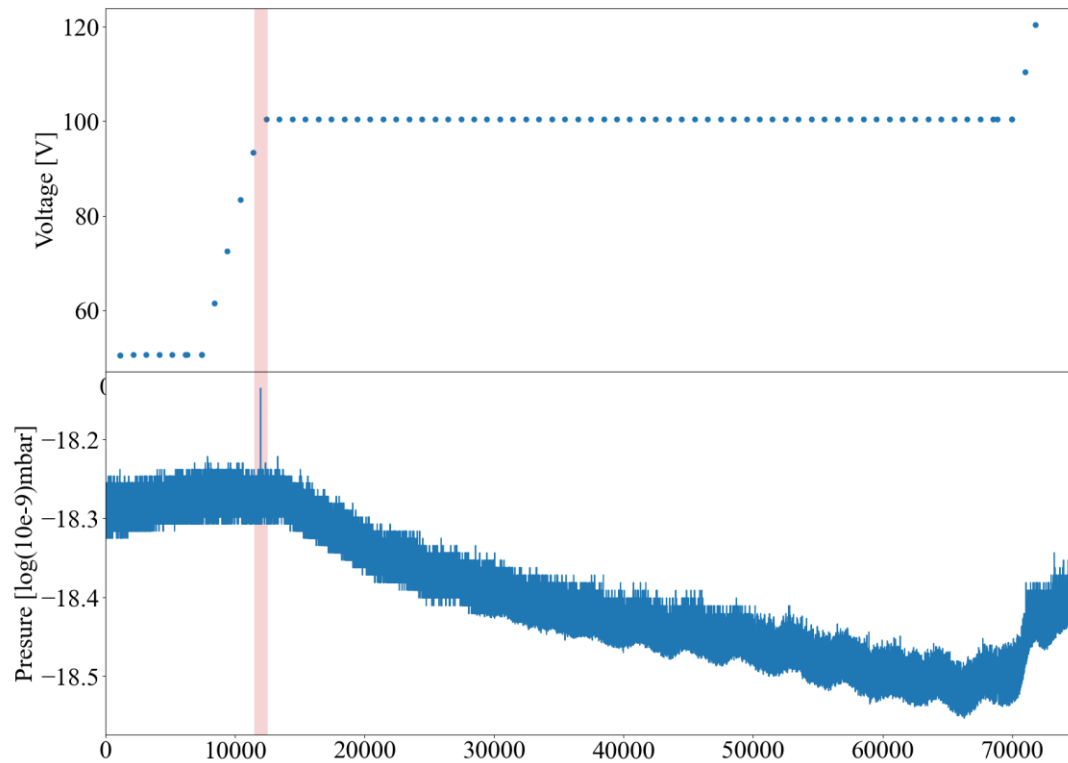
# Nichrome Electrodes

# Received to CERN

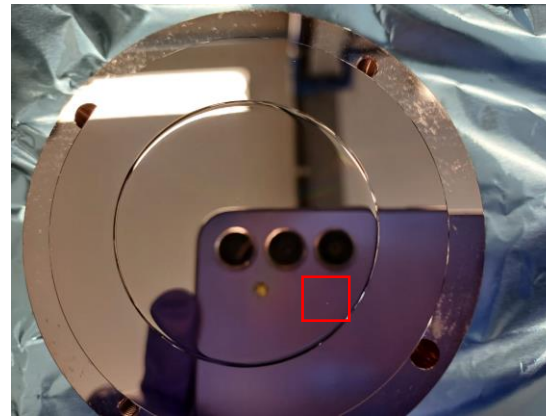


- Received electrode appeared in good shape.

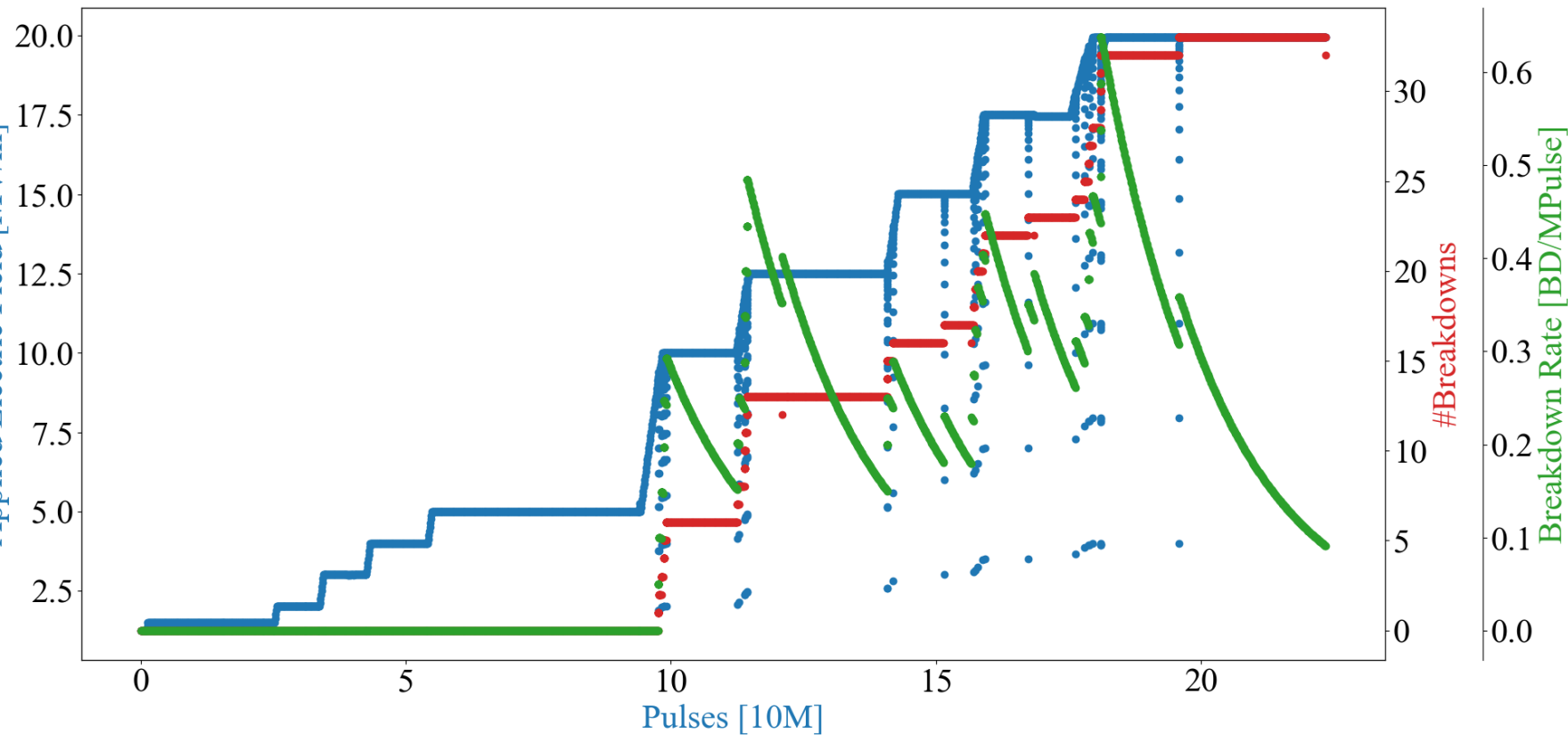
# Short circuit during first conditioning, 50um



- During our first conditioning trial, there became a short circuit at one point, turning the electrodes from a capacitor into a resistor.



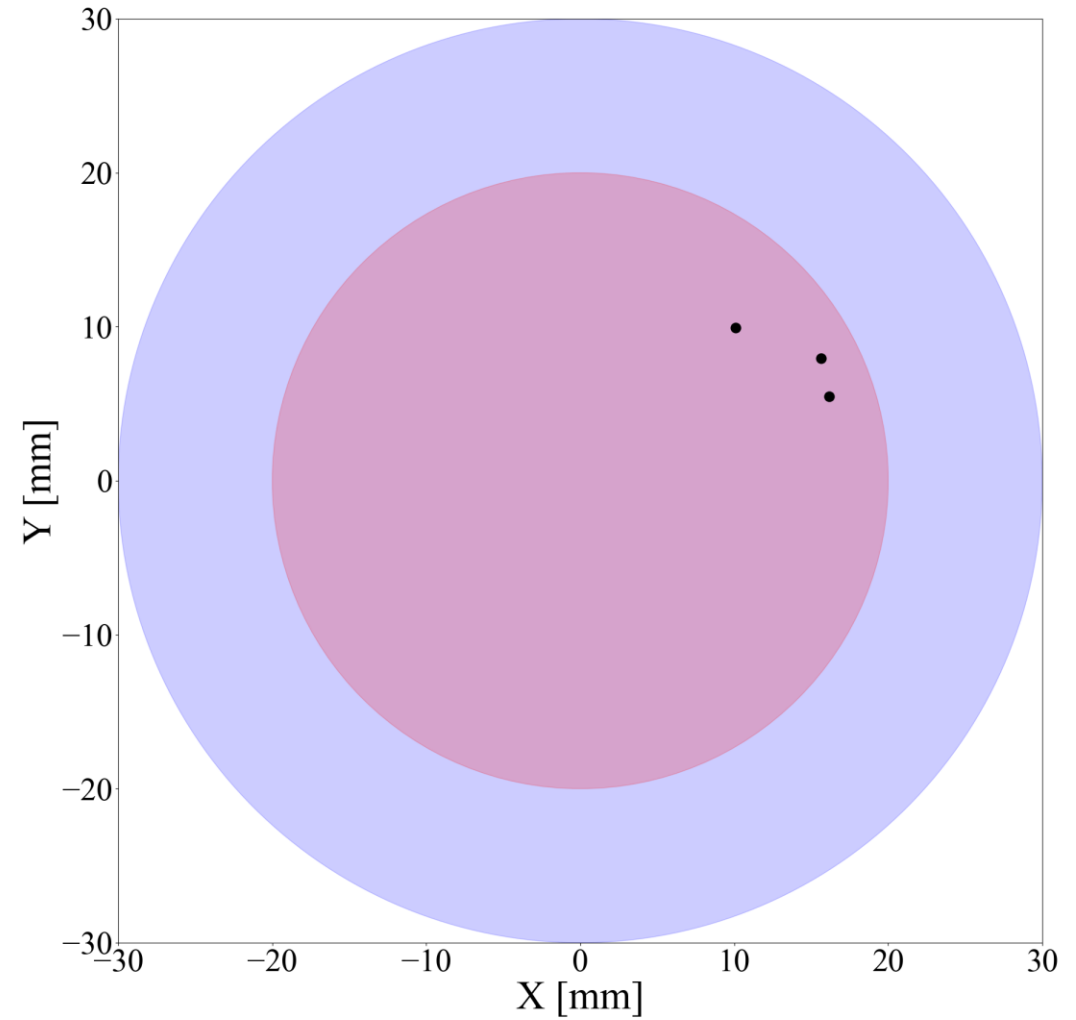
# Change to 80um gap, current gap for conditioning



- Carefully increasing the frequency from 100 to 500Hz, we are currently conditioning at 25MV/m (not shown) and are starting to locate the breakdowns.

# Breakdown Locations

- So far, the breakdowns are observed in close proximity.



# Summary

- Continue conditioning
- At 25MV/m.
- Starting to locate breakdowns.
  
- Comments:  
The electrode can go far beyond what is required of it with regards to field holding. We also see the pressure be heavily linked with the applied voltage.