

Site Reliability Reports at the Operations Meeting

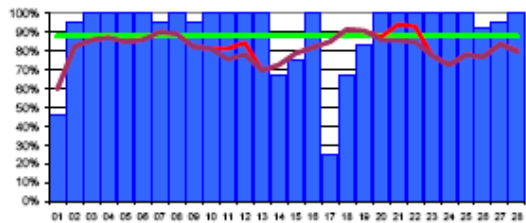


Alberto Aimar
IT/LCG
CERN



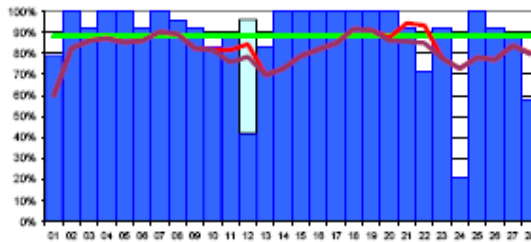
Reliability Reports – Until now

- **The targets for 2007 for each site are verified and reported since May 2006**
 - Using the SAM test results
 - Verifying monthly average vs the target for the site
 - For Tier-0 and Tier-1 sites
- **Target for each site**
 - 88% - current target
 - 91% - by Jun 07
 - 93% - by Dec 07
- **Taking only the 8 best sites**
 - 91% - current target
 - 93% - by Jun 07
 - 95% - by Dec 07
- **http://lcg.web.cern.ch/LCG/MB/availability/site_reliability.pdf**
- **Example that follows is from February 2007**



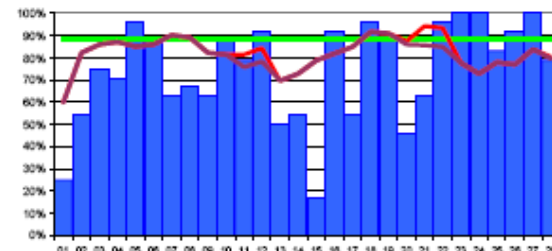
CERN

91%



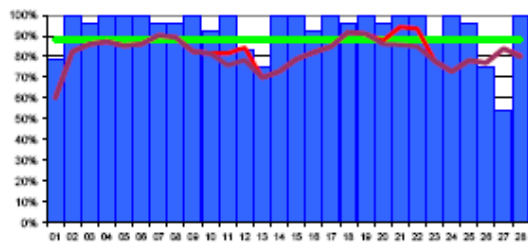
GridKa/FZK

90%



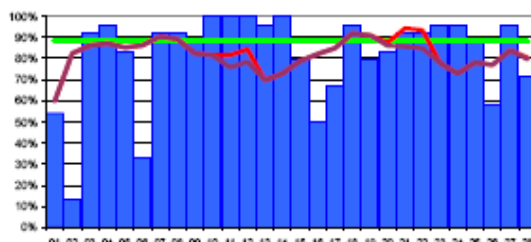
IN2P3

74%



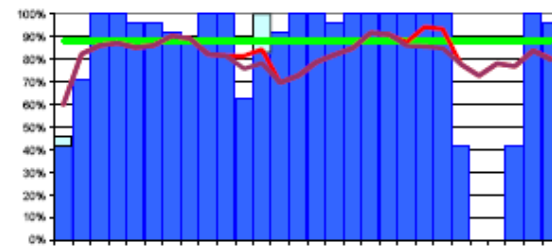
INFN/CNAF

93%



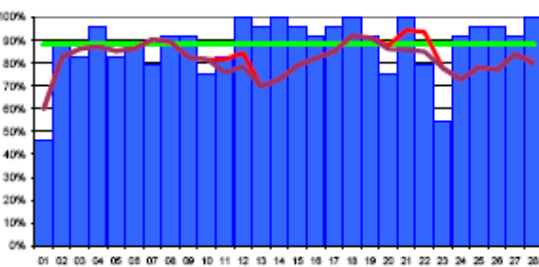
RAL

82%



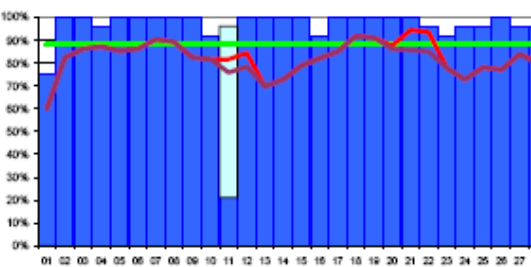
SARA-NIKHEF

83%



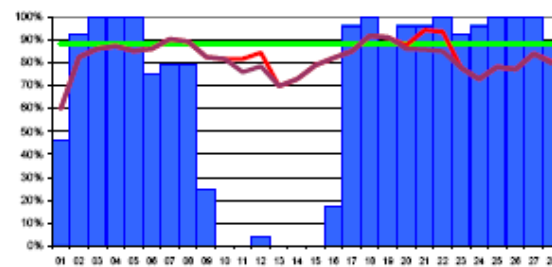
TRIUMF

88%



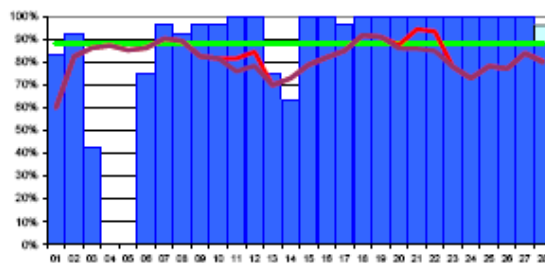
ASGC

97%



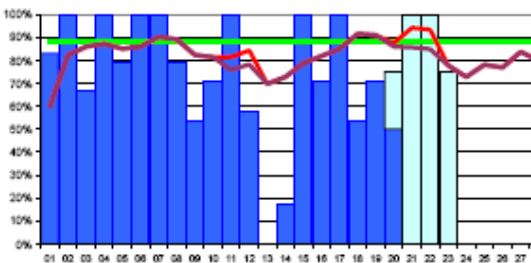
FNAL

67%



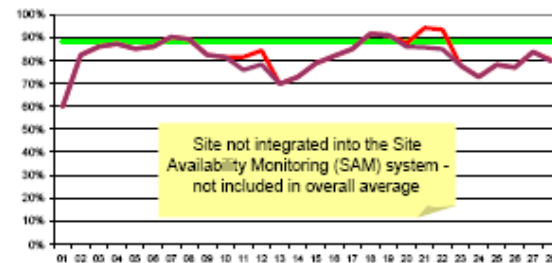
PIC

86%



BNL

57%



NDGF

n/a

SAM - Service Availability Monitoring Data

February 2007

Colour coding limits: **≥TARGET: 88%**

WLCG Tier-1s + CERN

Reliability = Availability/Scheduled_Availability (Scheduled_Availability=(1-Scheduled_Down_Time); tests are not run while scheduled down)

CERN-PROD	FZK-LCG2	IN2P3-CC	INFN-T1	RAL-LCG2	SARA-MATRIX	TRIUMF-LCG2	Taiwan-LCG2	USCMS-FNAL-WC1	PIC	BNL-LCG2
46%	79%	25%	79%	54%	44%	46%	75%	46%	83%	83%
96%	100%	54%	100%	13%	71%	88%	100%	92%	92%	100%
100%	92%	75%	96%	92%	100%	83%	100%	100%	42%	67%
100%	100%	71%	100%	96%	100%	96%	96%	100%	0%	100%
100%	100%	96%	100%	83%	96%	83%	100%	100%	0%	79%
100%	92%	88%	100%	33%	96%	88%	100%	75%	75%	100%
96%	100%	63%	96%	92%	92%	79%	100%	79%	96%	100%
100%	96%	67%	96%	92%	88%	92%	100%	79%	92%	79%
96%	92%	63%	100%	88%	100%	92%	100%	25%	96%	54%
100%	83%	88%	92%	100%	100%	75%	92%	0%	96%	71%
100%	88%	79%	100%	100%	63%	83%	84%	0%	100%	100%
100%	91%	92%	83%	100%	100%	100%	100%	4%	100%	58%
100%	83%	50%	75%	96%	92%	96%	100%	0%	75%	0%
67%	100%	54%	100%	100%	100%	100%	100%	0%	63%	17%
75%	100%	17%	100%	79%	100%	96%	100%	0%	100%	100%
100%	100%	92%	92%	50%	96%	92%	92%	17%	100%	71%
25%	100%	54%	100%	67%	100%	96%	100%	96%	96%	100%
67%	100%	96%	96%	96%	100%	100%	100%	100%	100%	54%
83%	100%	88%	100%	79%	100%	92%	100%	88%	100%	71%
100%	100%	46%	96%	83%	100%	75%	100%	96%	100%	67%
100%	92%	63%	100%	92%	100%	100%	100%	96%	100%	
100%	71%	96%	100%	92%	100%	79%	96%	100%	100%	
100%	92%	100%	88%	96%	42%	54%	92%	92%	100%	0%
100%	21%	100%	100%	96%	0%	92%	96%	96%	100%	0%
100%	100%	83%	96%	88%	0%	96%	96%	100%	100%	0%
92%	92%	92%	75%	58%	42%	96%	100%	100%	100%	0%
96%	88%	100%	54%	96%	100%	92%	96%	100%	100%	0%
100%	58%	79%	100%	71%	96%	100%	96%	88%	96%	0%
91%	90%	74%	93%	82%	83%	88%	97%	67%	86%	57%



Jan 07 and Feb 07

Site	Jan 07	Feb 07
CERN	99	91
GridKa/FZK	85	90
IN2P3	96	74
INFN/CNAF	75	93
RAL	80	82
SARA-NIKHEF	93	83
TRIUMF	79	88
ASGC	96	97
FNAL	84	67
PIC	86	86
BNL	90	57
NDGF	n/a	n/a

The target of 88% for the best 8 sites not reached

5 Sites > 88% (target)

5+3 Sites > 79% (90% of target)



Summary of Issues and Solutions Reported

Description	SITE: Problem, Solution
SRM/MSS	IN2P3: SRM/dCache failures, upgraded SRM server CERN: Unalarmed CASTOR failure, fixed the configuration INFN: CASTOR overload, increased pool disk space FZK: SRM not responsive, dCache patch applied, needs to be verified RAL: CASTOR log files too large, solved with log files rotation TRIUMF: SRM overloaded, dCache patch applied BNL: SRM overloaded and unresponsive, patches + SRM DB upgraded
BDII overload/timeout	RAL: BDII timeouts and RB problems, added 2 nodes situation improved TRIUMF: CERN Top-level BDII timeouts, moved to local top-level BDII
Other Load Problems, upgrading hardware	IN2P3: CE overloaded, fixed RB config PIC: CE overload, added nodes and banned temporarily some users FNAL: Gatekeeper instabilities, upgraded hardware
Not understood	FZK: RM failures (RM or BDII timeouts) RAL: Unspecified Gridmanager Error, GGUS ticket submitted
Operational Issues	IN2P3: Misconfigured RB, fixed CERN: Misconfigured test systems, fixed FNAL: CSH misconfigured after cluster upgrade, fixed BNL: Moved to SL4, SAM and gLite do not run until new release NDGF: Not reporting
SAM	IN2P3: message are not clear enough SARA: SAM modifications needed to access resources at NIKHEF



Upcoming Changes to Reporting

- **Currently the reports are sent to the LCG MB when the reliability data is distributed**
 - **By the MB member of the site**
- **Change the reports from monthly to weekly**
- **At the weekly site reports (in the CIC portal)**
 - **The weekly report will contain a new section to comment the downtime periods, called “Availability reports”**
 - **All downtimes $\geq 2h$ should be commented**

Date:

Reason:

Severity:

Solution:

CIC OPERATIONS PORTAL

- [Users](#)
- [VO management](#)
- [RC management](#)
- [ROC management](#)
- [COD management](#)
- [OAG management](#)

RC PRODUCTION REPORT

Weekly Operations Status report

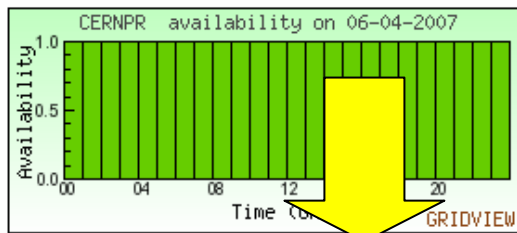
CERN-PROD

Reporting Period: to

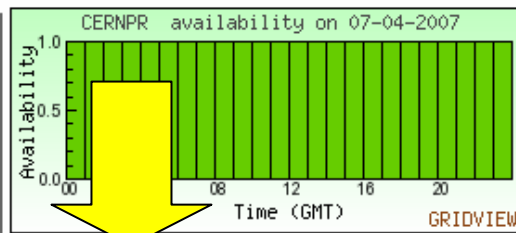
Availability

The following graphs come from gridview framework :

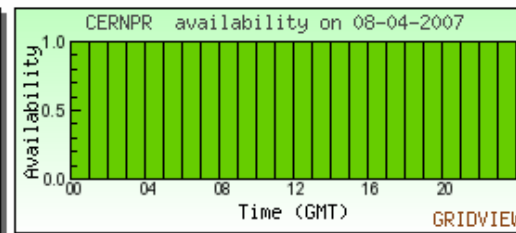
[Availability on 2007-04-06](#)



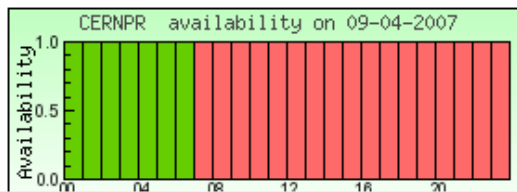
[Availability on 2007-04-07](#)



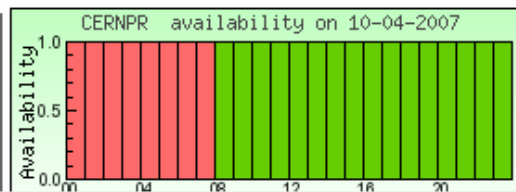
[Availability on 2007-04-08](#)



[Availability on 2007-04-09](#)



[Availability on 2007-04-10](#)



[Availability on 2007-04-11](#)



Major Operational Issues Encountered During the Reporting Period
[Describe any major operational problems encountered during the week.]

CERN-PROD :Report on 2007-04-06

CERN-PROD :Report on 2007-04-07

CERN-PROD :Report on 2007-04-08

CERN-PROD :Report on 2007-04-09

CERN-PROD :Report on 2007-04-10

CERN-PROD :Report on 2007-04-11





Sites that should report

Tier-0 and Tier-1 Sites in GOC DB

Tier-0 Site	Name in GOC DB
CERN	CERN-PROD (cern t0)
Tier-1 Site	Name in GOC DB
ASGC	Taiwan-LCG2 (ASGC Taipei, Taiwan)
BNL	BNL-LCG2 (Brookhaven National Laboratory, New York, USA)
INFN	INFN-T1 (INFN-T1 Bologna, Italy)
FNAL	USCMS-FNAL-WC1 (Fermi National Accelerator Laboratory, Illinois, USA)
FZK	FZK-LCG2 (FZK, Karlsruhe, Germany)
IN2P3	IN2P3-CC (IN2P3, Lyon, France)
NDGF	NDGF-T1 (Nordic Data Grid Facility)
PIC	pic (PIC (port d'informacio cientifica))
RAL	RAL-LCG2 (RAL, GridPP Tier-1 Computing, Oxfordshire UK)
SARA-NIKHEF	NIKHEF-ELPROD (NIKHEF, Amsterdam, The Netherlands)
	SARA-LISA (SARA, Amsterdam, The Netherlands)
	SARA-MATRIX (SARA, Amsterdam, The Netherlands)
TRIUMF	TRIUMF-LCG2 (TRIUMF, Vancouver, Canada)



Next Steps

- **All sites should comment their down time in the weekly report to the Operations Meeting**
 - Date:
 - Reason:
 - Severity:
 - Solution:
- **They will be extracted and checked every Monday**
- **Missing reports will be requested to the MB on Tuesday**
- **A monthly summary will be presented to the MB**
- **Target for each site**
 - **88% - current target**
 - **91% - by Jun 07**
 - **93% - by Dec 07**