



EU projects at CERN

CERN EU Projects Office overview

Main CERN statistics on EU projects

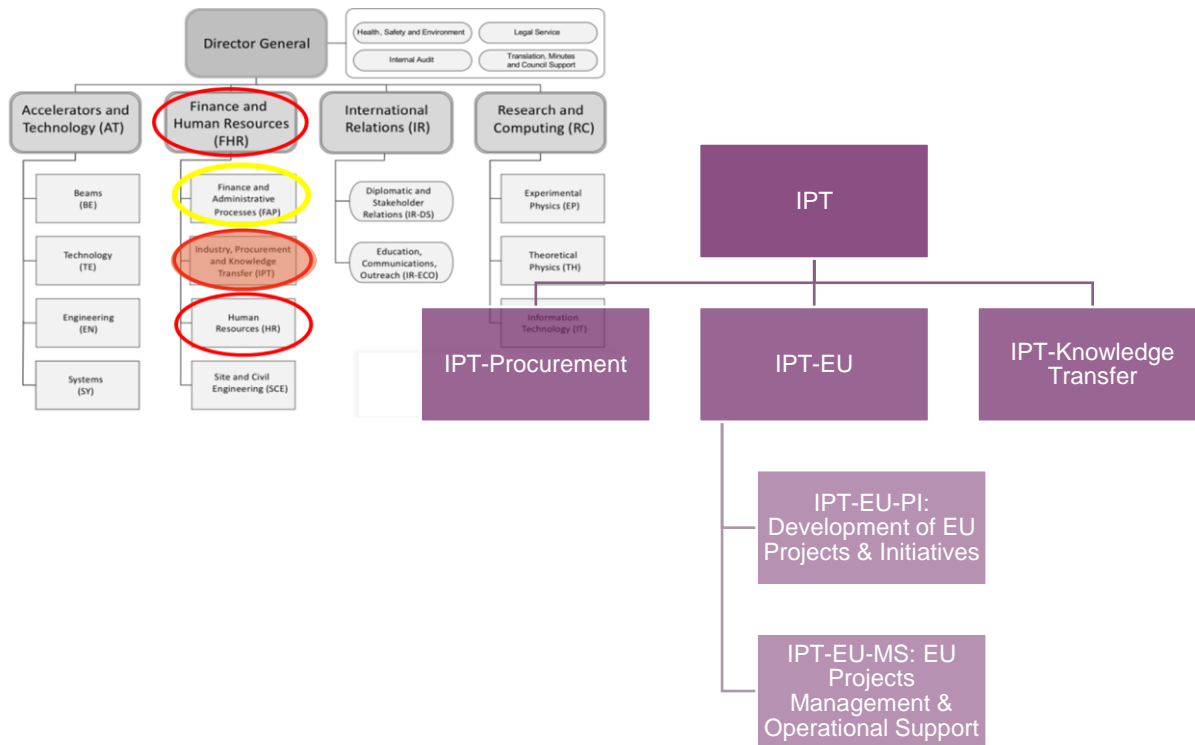
EU Projects Office project management activities

Cloé Levointurier-Vajda, CERN EU Projects Office

18 June 2024

CERN EU Projects Office

The EU Projects Office oversees the participation of **CERN** in the EU Programmes for scientific and technological cooperation, and **provides support** in the preparation and implementation of EU projects, carried out at CERN.



IPT-EU-PI:

- Support for proposals writing
- Development of new EU proposal initiatives
- Management of the ATTRACT project

IPT-EU-MS:

- Overview of CERN participation within EU proposals & projects
- Administrative support at various stages (proposals, GAP, on-going projects)

→ CERN EU Website: <https://cerneu.web.cern.ch/>

IPT: Industry, Procurement and knowledge Transfer

CERN EU Projects Office

Group Leader: IPT-EU



Christopher Hartley

EU Projects Management & Operational Support Section (IPT-EU-MS)



Svetlomisr Stavrev

Section Leader



Cloé Levoiturier-Vajda



Sabrina El yacoubi



Pablo Lopez

Support with the submission of EU proposals & with project implementation.

Development of EU Projects & Initiatives Section (IPT-EU-PI)



Pablo Garcia Tello

Section Leader



Roy Pennings

Support with new EU initiatives.

Communication: IPT-EU



Antoine Le Gall

→ Laura's presentation tomorrow

Strong collaboration with other CERN teams, at all project stages: External Grants, Human Resources, Legal Service, Knowledge Transfer, ...

CERN EU Support Office (IPT-EU-MS) main activities

Support at proposal stage

Internal CERN process:
EDH document

Specific call internal processes:
Marie Curie Steering Committee,
ERC selection boards

Advice regarding Work Programmes
and suitable calls

Guidance on the EC Portal use and
available resources (e.g. templates)

Editing & writing sections of the
proposal (within the limit of available
resources)

Review of proposals
(within the limit of available resources)

Support at implementation stage

For all projects:

Grant Agreement Preparation

Consortium Agreement overview

Support for Transnational Access
activity, if any

For projects Coordinated by CERN:

Setting up project management tools
(website, mailing lists, shared folder,
Zenodo, Indico ...)

Contribution to Project Management
Team

Support with the scientific & financial
reporting to the EC

Communication & outreach activities

Miscellaneous

Selection of info to be made available
(website, newsletter, targeted
communication channels,
presentations, etc.)

Organisation and delivery of training
courses on EU project management,
proposal writing etc.

EIROforum activities (meetings,
minutes, visits for annual student
winners)

Reporting (statistics) on submitted and
on-going projects

Other, upon request (Gender Equality
Plan, DMP, lecture...)

- Coordinated by CERN**
- Project management tools (website, intranet, mailing lists, Zenodo, Indico)
 - Budget Masterfile follow-up
 - Contribution to Project Coordination Office, Management Team & Governing Board (SC)
 - Templates and guidelines (milestones, deliverables, TA, publications, presentations)
 - TA activity (coordination and support)
 - Meeting organization & minutes
 - Communication
 - Support with reportings (yearly, periodic, continuous)
 - Contacts with the EC
 - Amendment process

- Not coordinated by CERN**
- Upon request

Coordinated by CERN

Not coordinated by CERN

- Advice regarding Work Programmes and suitable calls
- Website management
- Procedures & guidelines for CERN community
- Organisation of training courses
- EU Projects@CERN Newsletter
- EIROForum (visit for winners, minutes of meetings, ...)
- Reporting (stats) on submitted and on-going projects
- Other, upon request (Gender Equality Plan, DMP, lecture...)

Miscellaneous

EU Projects Office

Implementation stage

Proposal stage

Grant Agreement Preparation stage

Coordinated by CERN

- DoH, GA, Supplementary Agreement (if ERC) signature follow-up
- EC Portal for GA data preparation
- DoA and annexes
- Link with FAP-RPC-EG for CERN budget and bank account on the Portal
- Scientific Agreement Questionnaire
- Consortium Agreement with LS and signature follow-up

Not coordinated by CERN

- DoH and Accession Form signature follow-up
- EC Portal for CERN GA data preparation and CERN roles
- Link with FAP-RPC-EG for CERN budget
- Consortium Agreement (when LS approval) signature follow-up

ERC

RI coord. CERN

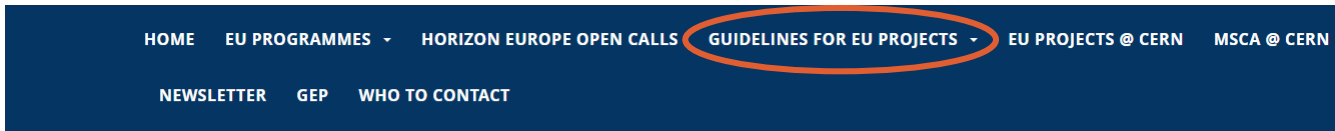
Any other EU project

- European Research Council**
- Advice and review of proposals (Part A, B and annexes)
 - EC Portal
 - Prepare Host Institute support letter
 - EDH document

- Research Infrastructure**
if CERN coordination
- Advice on the Consortium and project setup
 - Collecting input for the proposal from the Steering Group, beneficiaries, financial and scientific contacts
 - Editing, writing and reviewing (sections) of the proposal
 - Graphical representations (maps, diagrams, tables, Gantt chart, Pert diagram)
 - Assembling the full proposal
 - Preparation of budget master file (~60+ sheets) incl. individual budget files for each beneficiary
 - Follow up with partners on participant descriptions, budget verification, administrative forms
 - EC Portal
 - EDH document

- Any other EU project**
- EC Portal
 - EDH document

Some procedures & guidelines for CERN community



Submission and approval of EU projects

An EDH document for internal approval and submission of EU projects has been implemented and released by the FAP-AIS group as of 1 May 2015.

The new EDH document is to be used for any EU project, coordinated or not coordinated by CERN submitted to Horizon 2020 or other EU programmes. It will allow:

- to streamline the implementation of the internal procedures for approval of EU projects;
- to keep an electronic track of the approval of all EU proposals submitted to the EC;
- to make sure that the information for the EU proposals is conveyed in a timely manner;
- to obtain all necessary authorizations before the proposals are submitted to the EC.

► Proposals for which the EDH routing is not completed can be submitted only with the special agreement of the Director-General.

► If EU proposals are submitted without the necessary authorizations in EDH, CERN may withdraw from the consortium in case the projects are selected for funding.

The link to the EDH document can be found [here](#) .

The EDH document needs to have as attachment a short project summary. The templates for the project summary can be found in the EDH document itself.

Information for ERC applicants

Conditions for hosting ERC grants at CERN

Contract of the PI	CERN preliminary conditions
CERN staff with LD contract	The department hosting the PI and HR will need to agree on the possible contract extension (limited to 8 years). The salary costs that will be charged to the grant and/or covered by the department need to be agreed with the Department Planning Officer (DPO) and the External Grants Section of the Finance Department (FAP-EE-EG).
CERN staff with IC contract	The department hosting the PI (Department Head & DPO) will need to agree on what fraction (if any) of the PI salary will be charged to the grant and what fraction will be used for all other costs.

If the PI **does not hold a staff contract (e.g. CERN user status)**, the candidate will need to apply to a dedicated CERN staff position for ERC grant applicants. The procedure is described below.

Starting & Consolidator Grants	The PI will have to apply to the dedicated ERC vacancy notices , available on the CERN jobs website, after discussion with the Department Head concerned and prior to the completion and submission of the EDH document , as well as prior to the proposal submission to the ERC . The decision to host the ERC at CERN will be taken before the submission of the grant, following a selection board with the participation of the Department Head concerned. If successful and if in the interest of CERN, the selection board will recommend to the Director-General that the PI be granted a Staff Member contract. However, the award of a staff position (limited to the duration of the grant) will be contingent upon the PI's proposal being retained
---	--

CERN main statistics

Proposal stats in Horizon Europe

234 proposals submitted since 2021
159 proposals without MSCA-PF

- Mostly under Pillar 1:
 - 102 MSCA (incl. 75 PF)
 - 46 ERC
 - 32 RI
- But also a strong interest for:
 - Pillar 2 Cluster 4: 13 proposals
 - Pillar 3 EIC: 15 proposals

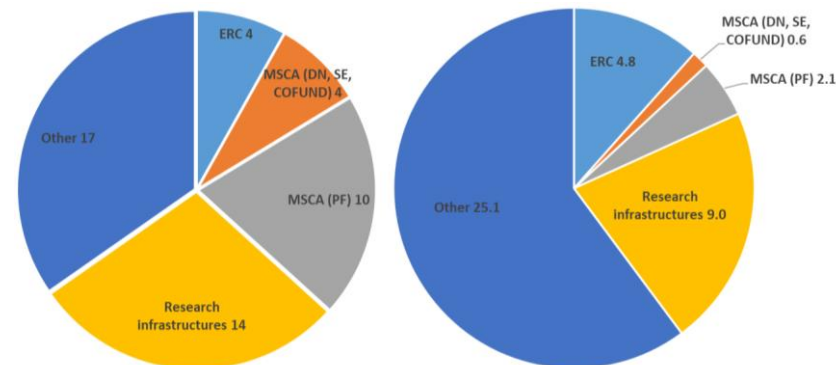
Most of CERN proposals are as Beneficiaries: without ERC and MSCA-PF, only 12 collaborative proposals have been submitted with CERN as Coordinator

Funded projects stats in Horizon Europe

49 proposals accepted for funding *actually 52, but 3 cancelled by researchers before GA signature*

25% success rate
30 proposals are still under evaluation up to 44-45% under Research Infrastructure and Cluster 4 calls

41.7 M€ EU funding for CERN



Number of funded projects

Funding for CERN (M€)

Quick overview of H2020 (2014-2020)

323 proposals without MSCA-IF

105 funded projects

33% success rate

72.4 M€ EU funding for CERN

On-going projects Coordinated by CERN

H2020:

AIDAInnova*, I.FAST*, RADNEXT*
PRISMAP, FCCIS, LISA, ATTRACT2**

HE:

MuCol, HEARTS*,
ATTRACT Phase-1B**

* Strong involvement of IPT-EU-MS

** Strong involvement of IPT-EU-PI

IPT-EU-MS project management activities

AIDAInnova, I.FAST, RADNEXT, HEARTS

AIDAInnova & I.FAST:

Research Infrastructure projects

~47 beneficiaries + ~15 associated partners

10M€ EU funding (including indirect costs)

~20M€ total costs (without indirect costs)

13 WP incl. one for innovative sub-projects

RADNEXT:

Research Infra. with TNA activities

33 beneficiaries + 8 associated partners

30 facilities

5M€ EU funding (including indirect costs)

9M€ total costs (without indirect costs)

10 WP incl. 3 related to TNA activities

HEARTS:

Cluster 4 – Space

6 beneficiaries + 1 associated partner

3.6M€ EU funding

Management activities

Grant Agreement & Consortium Agreement amendments

Follow-up of Milestones and Deliverables

Coordination of technical Y1 and periodic reports

Follow-up of the use of resources and calculation of interim payments

Collaborative tools coordination (e.g. Zenodo for publications)

Organisation of events & workshops

Support to Consortium meetings

Communication & Dissemination activities (newsletter, social media, leaflets, booth, internal communication, ...)

Archiving

Focus on use of resources follow-up as Coordinator

The EU funding is not always covering the full resources (person-months & budget) needed to implement the action as described in the Grant Agreement Annex 1, Description of the action. In this case, the use of resources is followed-up at two levels (full costs & EU funding). Full costs are only used in a few projects coordinated by CERN, where the EU contribution is well below the full costs. It's not generally applicable to all EU projects coordinated by CERN.

Full costs definition

The full costs are the budget needed to run the overall action:
Full costs = EU funds (direct costs only) + matching funds

By matching funds, we hear any other source of funding (own resources of the institute, national funding, any other external funding).

No double funding for the same specific expense.

Funding rate definition

Funding rate = EU funding (direct costs only) / Full costs

Depending on the projects and on the type of Beneficiaries, the funding rate varies from ~25% up to 100%

EU funding definition

This is part of the full costs budget which is funded by the EU project, to which the indirect costs are added.

The Annex 2 of the Grant Agreement is describing the estimated EU funding: maximum EU contribution = maximum grant amount = EU funding only, not full costs.

Some exceptions may exist:

- If the co-funding agency requests to report full costs in the EU project for instance. In that case:
maximum EU contribution = full costs (plus indirect costs) >
maximum grant amount = EU funding only
- If the funding rate is exceptionally 100% for a given beneficiary.

Focus on use of resources follow-up

Full costs reporting

Full costs reporting is done through Excel files called Internal Resources Utilisation Summary (IRUS)

1 IRUS file for each Beneficiary and each Associated Partner with their own funding source, with breakdown at WP level

CERN as coordinator does not request certified costs for the reported full costs (no mandatory audit)

Explanation of deviations in the Excel file is requested

Periodicity: M1-M12 (Y1) + M1-M18 (P1) + M19-M36 (P2) + M37-M48 (P3)

EU funding reporting

EU funding reporting is done through the Financial Statements (FS) on the EC Portal, reporting module

1 FS file for each Beneficiary, and each LTP/AE if any

No breakdown at WP level, except for Person-Months and some other direct costs to be explained (>15% pers. costs)

Eligible costs only, and CFS needed at the last Period, depending on the cumulative requested EU contribution

Explanation of deviations in the Periodic Report, section Use of resources & Deviations from Annex 1 and Annex 2

Periodicity: M1-M18 (P1) + M19-M36 (P2) + M37-M48 (P3)

Focus on use of resources follow-up

Full costs reporting (an example from I.FAST project)

Please complete B, C and D columns, and cell A22 if needed. Right side table is automatic, please do not modify.

Beneficiary / Partner

IRUS for beneficiary	no.	Period
CEA	6	M19-M36 01.11.2022 - 30.04.2024

To be filled by the beneficiary / partner: breakdown per WP

WP no.	Person-months used (PM)	Estimated personnel costs €	Estimated other direct costs* €	Total direct costs €
WP2				0
WP3				0
WP5				0
WP6				0
WP8				0
WP9				0
WP13				0
Total	0.0	0.0	0.0	0

To be filled by the beneficiary / partner: explanations on deviations

* Equipment, consumables, travels, computing, services, goods ...

Provide a brief explanation for any significant deviations from the planned manpower utilisation (over-spending or under-spending exceeding 20% with respect to the planning // planning until M36 = 75%)

Estimated budget (full costs) for the whole duration

WP	PM in Attachment 1A (CA)	Total direct costs in Attachment 1A (CA)	Use of resources P1		Use of resources P2		Use of resources until M36	
			PM in P1	Full costs in P1	PM in P2	Full costs in P2	% PM	% Full costs
WP2	1.0	7,800.00	0.1	1,136	0.0	0	11%	15%
WP3	3.0	25,400.00	0.5	4,546	0.0	0	15%	18%
WP5	5.0	52,000.00	2.0	15,867	0.0	0	39%	31%
WP6	3.0	50,000.00	0.5	5,225	0.0	0	18%	10%
WP8	10.0	75,000.00	2.6	23,456	0.0	0	26%	31%
WP9	13.0	247,000.00	6.6	98,550	0.0	0	51%	40%
WP13	21.0	194,800.00	7.0	53,912	0.0	0	33%	28%
Total	56.0	652,000.00	19.3	202,691.3	0.0	0	34%	31%

Possible deviations detection

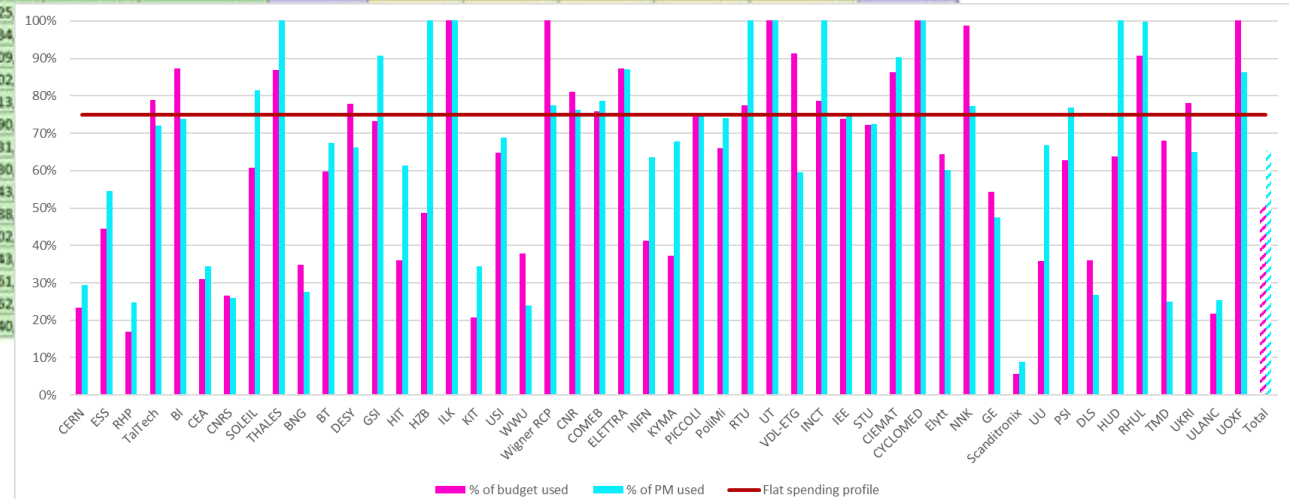
Focus on use of resources follow-up

Full costs reporting (an example from I.FAST project)

WP7 - High brightness accelerators for light sources						
	Person-months used (PM)	Personnel costs	Other Direct costs	P2 Direct costs	Total direct costs budget	PM in budget
CERN				0.00	606,200.00	31.5
ESS						
RHP						
TalTech						
BI						
CEA						
CNRS						
SOLEIL	2.3	23,141.26	2,158.67	25,299.93	31,050.00	3.0
THALES						
BNG						
BT						
DESY	0.5	6,611.20	6,446.20	13,057.40	22,816.73	1.0
GSI						
HIT						
HZB						
ILK						
KIT				0.00	102,650.00	6.5
USI						
WWU						
Wigner RCP						
CNR						
COMEB	15.0	55,000.75	33,826.67	88,827.42	263,500.00	49.0
ELETTRA	11.6	86,787.67	1,410.97	88,198.64	301,100.00	23.0
INFN				0.00	545,000.00	102.0
KYMA	5.4	49,550.00	3,937.00	53,487.00	266,900.00	19.0
PICCOLI						
Polimi						
RTU						
UT						
VDL-ETG	21.7	244,224.58	51,039.91	295,264.49	374,000.00	45.0
INCT						
IEE						
STU						
CIEMAT	17.0	91,257.53	23,722.27	114,979.80	161,200.00	27.0
CYCI OMFD						

WP	Full costs (€)					Flat spending profile	Person-months					Flat spending profile
	M1-M18	M18-M36	M1-M36	Total budget	% of budget used		M1-M18	M18-M36	M1-M36	Total PM	% of PMs used	
WP1	387,956	96,271	484,227	1,867,100	26%	75%	24.9	10.6	35.5	113.7	31%	75%
WP2	136,482	55,565	192,047	573,165	34%	75%	15.5	2.1	17.6	40.0	44%	75%
WP3	134,266	96,251	230,517	460,100	50%	75%	15.4	13.2	28.6	56.0	51%	75%
WP4	379,566	152,848	532,414	1,888,667	28%	75%	35.8	24.6	60.4	182.6	33%	75%
WP5	535,221	483,493	1,018,714	2,075,590	49%	75%	60.6	54.0	114.6	194.0	59%	75%
WP6	269,853	172,525	442,378	1,046,904	42%	75%	23.3	12.4	35.7	90.7	39%	75%
WP7	1,035,819	1,086,603	2,122,422	3,190,667	67%	75%	169.1	102.0	271.0	344.5	79%	75%
WP8	464,418	517,755	982,173	1,562,758	63%	75%	73.8	76.5	150.3	181.4	83%	75%
WP9	518,354	468,275	986,629	1,839,355	54%	75%	65.0	57.8	122.8	208.8	59%	75%
WP10	389,126	344,592	733,718	1,170,975	63%	75%	54.0	59.2	113.2	131.9	86%	75%
WP11	239,658	469,879	709,537	1,234,335	57%	75%	25.4	43.7	69.1	78.0	89%	75%
WP12	320,235	273,429	593,664	801,954	74%	75%	71.9	50.2	122.1	125.4	97%	75%
WP13	181,754	130,605	312,360	661,700	47%	75%	22.7	19.7	42.3	60.0	71%	75%
Total	4,992,708	4,348,090	9,340,798	18,373,269	51%	75%	657.3	525.9	1,183.2	1,807.1	65%	75%

Beneficiaries	Full costs (€)					Flat spending profile	Person-months					Flat spending profile
	M1-M18	M18-M36	M1-M36	Total budget	% of budget used		M1-M18	M18-M36	M1-M36	Total PM	% of PMs used	
CERN	1,077,238	0	1,077,238	4,627,216	23%	75%	63.5	0.0	63.5	215.4	29%	75%
ESS	50,057	41,984	92,041	207,200	44%	75%	3.3	4.1	7.4	13.5	54%	75%
RHP	25,535	0	25,535									
TalTech	21,841	12,506	34,347									
BI	55,382	154,129	209,511									
CEA	202,691	0	202,691									
CNRS	213,435	0	213,435									
SOLEIL	30,478	60,472	90,950									
THALES	40,711	290,316	331,027									
BNG	30,531	0	30,531									
BT	14,000	129,190	143,190									
DESY	166,848	221,328	388,176									
GSI	185,420	317,023	502,443									
HIT	43,229	0	43,229									
HZB	10,211	51,206	61,417									
ILK	74,148	88,493	162,641									
KIT	40,213	0	40,213									



Thank you for your attention

Any questions?



home.cern