



# CERN STORES

## Supply Chain Operations

04/06/2024

Magdolna PIERRE

# CERN Stores – Supply Chain

## CERN STORES

Referencing and Replenishment

Operations

Referencing of items

Inbound, internal and outbound warehousing operations

Reverse logistics

Replenishment of CERN Stores stock items and direct delivery order handling

Stock management

Cutting operations cables and raw materials

Urgency window

Supply Chain Desk (SNOW)

The goal is to ensure an optimal lead time in line with internal client's expectations, traceability, and quality insurance for materials received at the Stores.



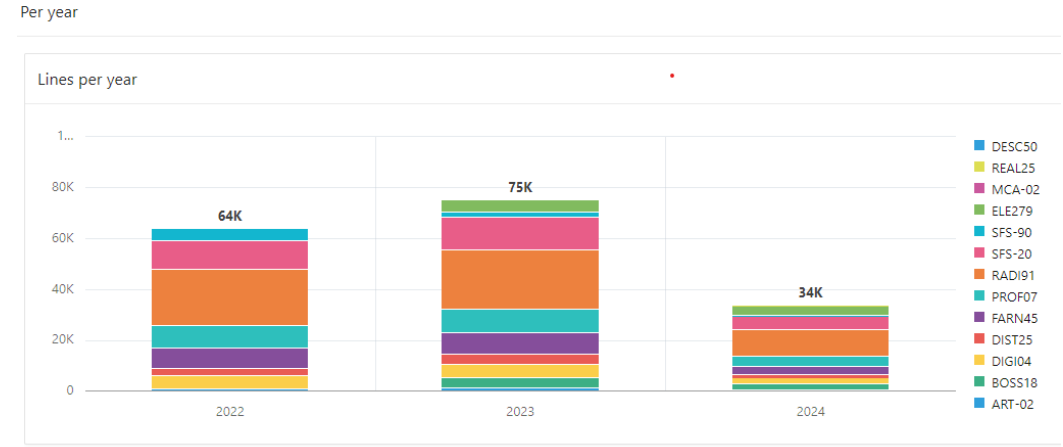
*The Supply Chain section of CERN Stores provides to the CERN's community various services such as referencing of standard products (regular demand), replenishment of stock, placement of direct delivery orders, responding to user requests via SNOW. Furthermore, it oversees a part of the operations such as inbound and outbound of goods, reverse logistics in collaboration with the Internal transportation team, Central Reception, Customs and Shipping.*



# Products & Ordering process

- ~13k references (raw material, cables, IT products, consumables, tools, PPE, chemical products etc.)
- ~9k stocked for a value of ~ 11 M CHF
- 50-60k+ lines/year, so far in 2024 we are at 20k+ lines

The image shows two screenshots from the CERN Stores Catalogue. The top screenshot is the main interface with a search bar and a list of product categories on the left. The bottom screenshot is a 'Material Request' form for 'Margolaine PIERRE (SCE-SSC-SQ)' with fields for 'Requestor', 'Budget Code', and 'Order Items from'. Below the form is a row of logos for various suppliers including Farnell, RS, BOSSARD, SFS, Distrelec, Lyreco, art, SFS, Dig-Key, Mouser, Sonepar, Prolians, and Mabeo. The 'Order Lines' table has one entry with 'Pos.' 1, 'Quantity' field, 'Unit' field, 'SCEM' field, and 'Comment' field.



- 13 Punch-out catalogues (Lyreco, Farnell, Sonepar, Art Computer, SFS, Bossard, etc.)
- 64K order lines in 2022, 75K (+20%) in 2023, 34K so far in 2024

[Material Request \(cern.ch\)](https://cern.ch)

# CERN Stores – Infrastructure and Equipment



B. 119 (1450 m<sup>2</sup>). Urgency counter, PPEs, racks, consumables, tools, CERN Shop items, cables, IT products, etc.

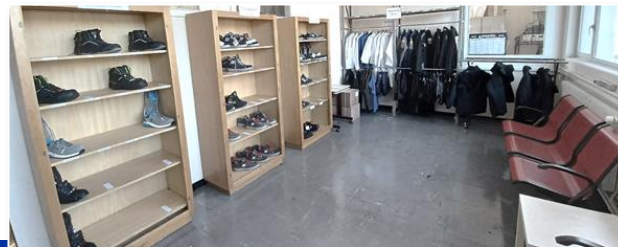
B. 128 (470 m<sup>2</sup>).  
Chemical containers

B. 129 (2300 m<sup>2</sup>).  
Raw material storage,  
cutting machines

B. 617 (tent 245 m<sup>2</sup>).  
Cable drum storage

# MS Operations (team of 4-5 FTEs)

- Reception of CERN Stores standardized items (~8k SCEMs)
- Inbound of goods to their final physical location at the Stores
- Daily picking activity (~ 250 pickings per day)
- Preparation of specific cables orders incl. cutting and rewiring
- Preparation of daily transfer orders to the CERN Shop (*Science Gateway*)
- Material return (system and physical return)
- PPE showroom
- Urgency desk (*30-40 orders/week*)
- PPE control (auto-saving masks, helmets, etc.)
- X2 (pick up of unsuccessful deliveries)



# MP Operations (team of 4 FTEs)

- Reception of CERN Stores standardized items (ca. various 3k SCEMs), integration to the stock and handling of direct delivery order dispatch (*raw materials, chemicals*)
- Inbound of goods to their final physical location
- Daily picking activity (~70 order lines/day)
  - Raw material preparation incl. cutting (**90% of the picking**)
  - Picking of chemical products (bldg. 128)
  - Cutting technologies: Water jet (TCI, Resato), circular saw (Schelling), wooden vertical cutting (STRIEBIG), saw for tubes.
  - A total of **13** machines
  - General maintenance of the machines
- Material return (system and physical return)
- Urgency desk (7-10 orders/week)



# MP Machinery

## Machines in production

## Asset management



Metallic plate cutting



Non-standard shape metallic plate cutting  
Waterjet machines



Tube cutting



Liming metallic pieces



Wood cutting



Asset	Description	Manufacturer	Model	Location	Dep./Service Unit	Status	Class	Commission Date	Out of Service	Assigned To	Resp. Technique (ID CERN)	Détenteur (ID CERN)	CERN Group	Production	Replacement Value
MFHX62-003	DECOUPEUSE (Water Cutting Machine). The only machine in the warehouse that can cut thick stainless & carbon steel plates. Furthermore, it can cut according to drawings inserted in different shapes and not only vertical or horizontal)	RESATO	LCM3015-1 - PJE-4.400	129	HXMF	Installed	HX62	9/1/2007	NO		74624	45383	SCE/SSC	YES	
MFHX59-254	SCIE A RUBAN Used for non-filled tubes (tubes with holes). Need to insert a strong object (usually wood) inside the tube hole to prevent deformation. Low frequency of use.	BATENS	T350	129	HXMF	Installed	HX59	1/1/1981	NO			45383	SCE/SSC	YES	
MFHX59-307	SCIE A RUBAN Used for thick tubes (max Ø45cm). Can cut many pieces automatically	DANOBAT	DS4A	129	HXMF	Installed	HX59	2/12/2013	NO			67435	SY/STI	YES	
MFHX59-275	SCIE A RUBAN Used for any kind of metal (max Ø35cm). Option of programming the exact size requested through a computer system. Can cut many pieces automatically (Preferred instead of BATENS. The BATENS cuts apply to this machine too)	FORTE	SBA361S	129	HXMF	Installed	HX59	2/23/2000	NO	74571		74571	SCE/SSC	YES	
MFHX57-176	SCIE CIRCULAIRE Wood and plastic cut (max 15cm thickness). Aluminum plates cut (max 14cm thickness). Not used for carbon & stainless steel (Danger of fire from heating). Equipped with a sawdust collector system.	SCHELLING	FT-M_330	129	HXMF	Installed	HX57	1/1/1995	NO			3810	SCE/SSC	YES	
MFHX63-017	SCIE A BOIS Wood cut (Small and big pieces, Vertical and Horizontal). Equipped with a sawdust collector system.	STRIEBIG	6220A C/COMPACT	129	HXMF	Installed	HX63	4/22/2015	NO			74571	SCE/SSC	YES	
MFHX35-043	PONCEUSE A BANDE, Deburring (liming) metallic pieces.	FEIN													
MFHX57-242	Scie à onglet radiale Wood cut. Not suitable for longer pieces (No space)	MAKITA													
MFHX58-116	CISAILLE Plate cutting (max 10mm thickness)	DARLEY													
MFHX59-012	Scie à rubans pour métaux Thin metal cut	MACC													
MFHX58-118	CISAILLE Thin aluminum plates cut (max 4mm thickness) and steel plates cut (max 2mm thickness). Mostly used for aluminum.	SCHRODE													
MFHX62-015	Water jet cutting Machine	TCL													
MFHX59-015	Everising H-460HFNC Scie à ruban	EVERISING													

Liste des consommables au MP 129 2/27/2024

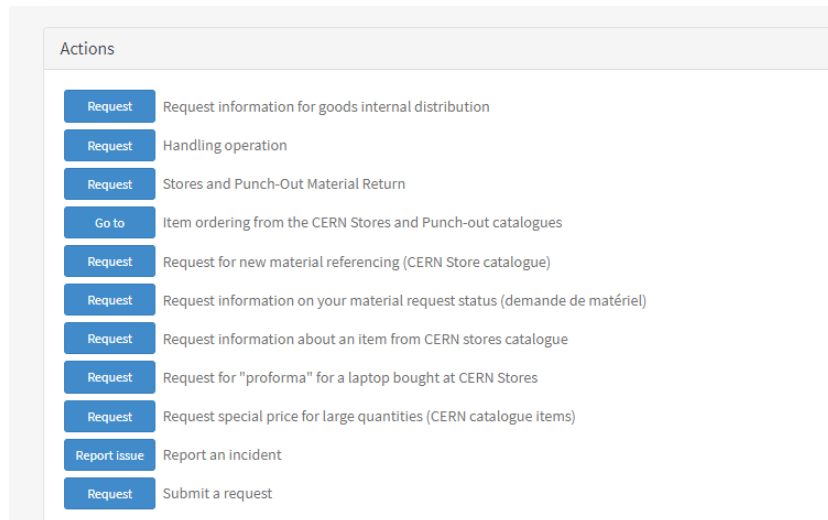
Catégorie	Numéro SCIM	Usable	Description	Conditionnement	Suggestion/Abbrévié	Remarques	Quantité commandée	Supplémentaire noté
Peinture	56.40.20.320.6		Bobeflauge fluo/àérosol inox			1 par boîte		
	56.40.10.114.5		Bobeflauge fluo/àérosol inoxydable àaérosol			1 par boîte		
	56.40.10.120.7		Bobeflauge/àaérosol inox			1 par boîte		
	56.40.10.140.3		Bobeflauge/àaérosol inox			1 par boîte		
	56.40.10.160.9		Bobeflauge/àaérosol en acier inoxydable			1 par boîte		
	56.40.10.160.5		Bobeflauge/àaérosol inox			1 par boîte		
	56.40.10.170.7		Bobeflauge/àaérosol inox			1 par boîte		
Masque	55.60.20.110.3		MASQUE ANTIPOUS ET FIBRES P3			boîte 10		
Gants	50.43.20.100.4		Parabain-cliponneteur			boîte 9		
	50.43.20.096.4		1 paire/GANT Menne			boîte 9		
	50.43.20.140.4		GIANT MANUTENTION MEL/HUMI			boîte 10		
	50.43.20.110.3		ParaPolyéthylène			boîte 10		
	50.43.20.100.4		TOUTE PROTEGE			75 millimètres		
	50.43.20.096.4		1 pièce/RADIAT			700X1000		
	54.31.06.082.4		1 FEUILLE/FEUILLE OXY					
Tissu	55.60.82.110.0		Microfibre Blanc		55.60.82.101.2			
Tissu de couleur	55.60.82.110.0		Tissu tissé pastel			10 kg		
Papier cellulosique	55.60.82.150.2		1 pièce/feuille avec 55.60.82.160.3			1500 en rouleau		
IMP Demande Matériaux STD	54.50.40.000.1		1 lot de 10 pièces/DEMANDE DE MATERIEL			AA (210 X 297 mm)		
Balai	55.60.05.230.2		Balais De Sol E/FB					
Balais sans manche	55.60.05.036.1		BALAI			longueur 40 cm		
Manche de brosse	55.60.98.015.9		1 pièce/lot			avec Netage		
Balais sans manche	55.60.05.230.2		1 balais			Longeur 14 cm		
Clip en plastique	04.76.81.708.0		1 pièce/Collet De Serrage					
Clip en plastique	04.76.81.710.6		100 pièces/PANDUIT					
Scelus	55.60.77.010.8		Vers polyéthylène/EAU			1 pc		
Chimique	58.04.38.204.0		5%CALC. ESSENCE 180/24 DEG			30 litres		
	58.04.38.204.0		ALCOOL ETHYLIQUE DENATURE					
	58.04.38.204.0		PJT POLYÉTHYLÈNE			605/50mm		
	58.04.38.204.0		1 pièce/àaérosol/àaérosol en acier inoxydable			15kg/20		
Toile - un objet en toile	44.43.33.200.3		GALVANISER EP2					
Pile/batterie	60.03.10.140.3		1 pile					
Gas	54.99.80.013.1		1 sac/àaérosol/àaérosol			sachet de 10		
Médical	54.99.80.014.0		32 pièces/àaérosol sensible					

## List of consumables (MP)

# How to contact us?

- ✓ If you have any urgent question/material request, please come and see us at the urgency window of bldg. 73 (standard items) or bldg. 129 (raw materials) or contact us
- ✓ via SNOW

**[Goods and Material Service - CERN Service Portal: easy access to services at CERN \(service-now.com\)](https://service-now.com)**



The screenshot shows a list of actions available in the CERN Service Portal. Each action is represented by a blue button with a label and a description.

Action Label	Description
Request	Request information for goods internal distribution
Request	Handling operation
Request	Stores and Punch-Out Material Return
Go to	Item ordering from the CERN Stores and Punch-out catalogues
Request	Request for new material referencing (CERN Store catalogue)
Request	Request information on your material request status (demande de matériel)
Request	Request information about an item from CERN stores catalogue
Request	Request for "proforma" for a laptop bought at CERN Stores
Request	Request special price for large quantities (CERN catalogue items)
Report issue	Report an incident
Request	Submit a request



# Thank you!

## Q & A



[home.cern](http://home.cern)