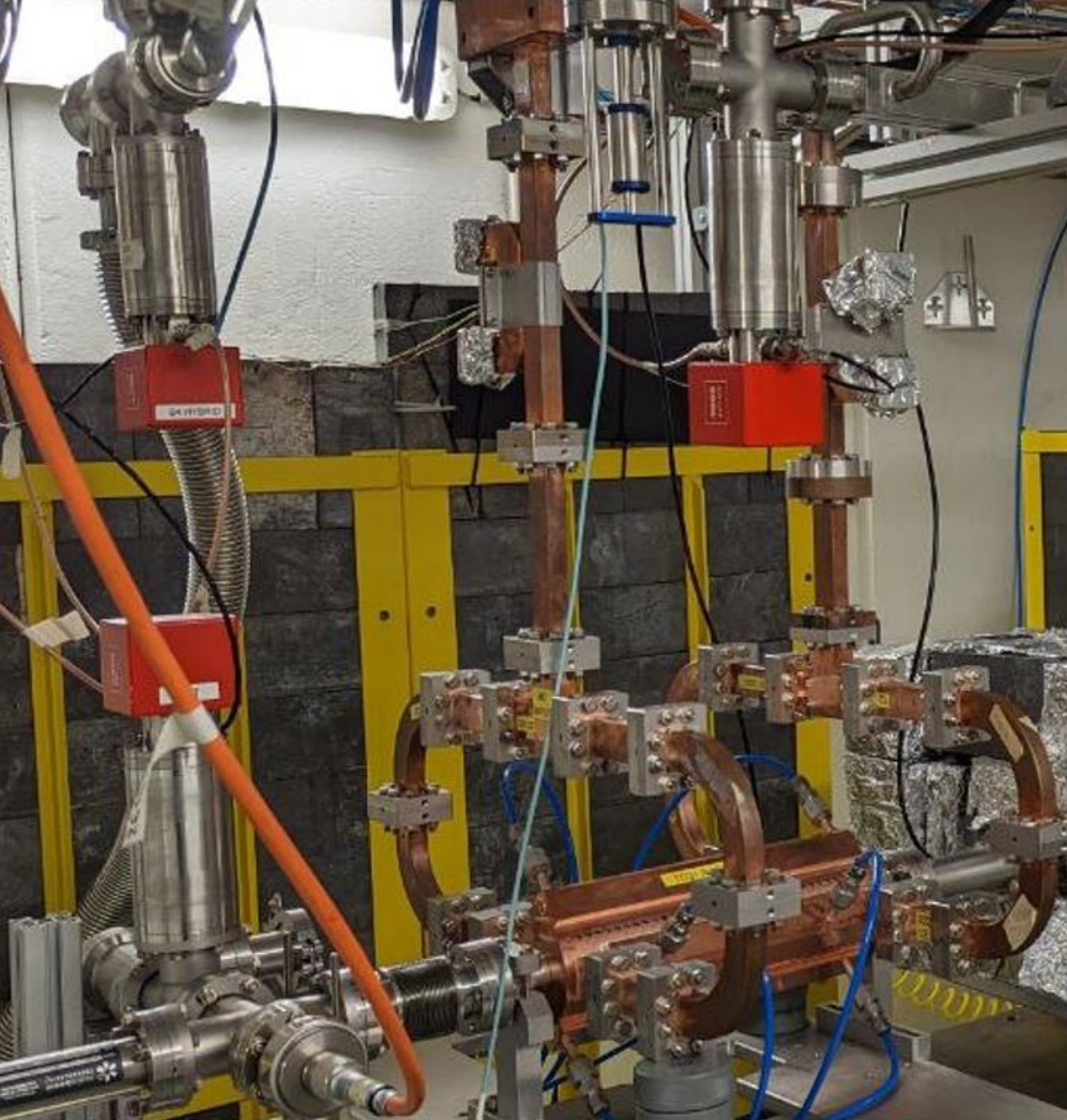




X-Box Summary

26.06.2024

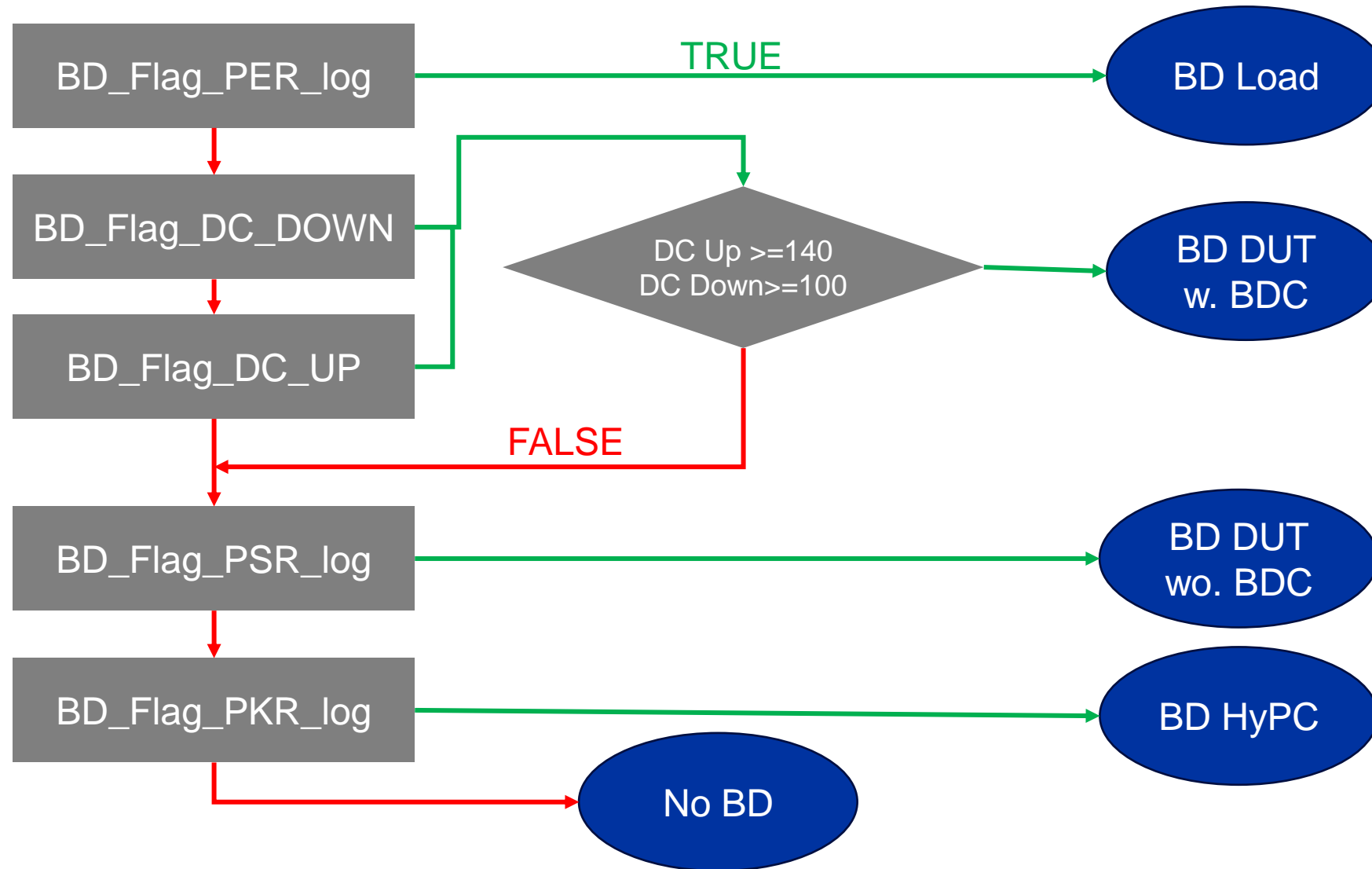


X-Box 2 TD31 N3 N4: Structure B

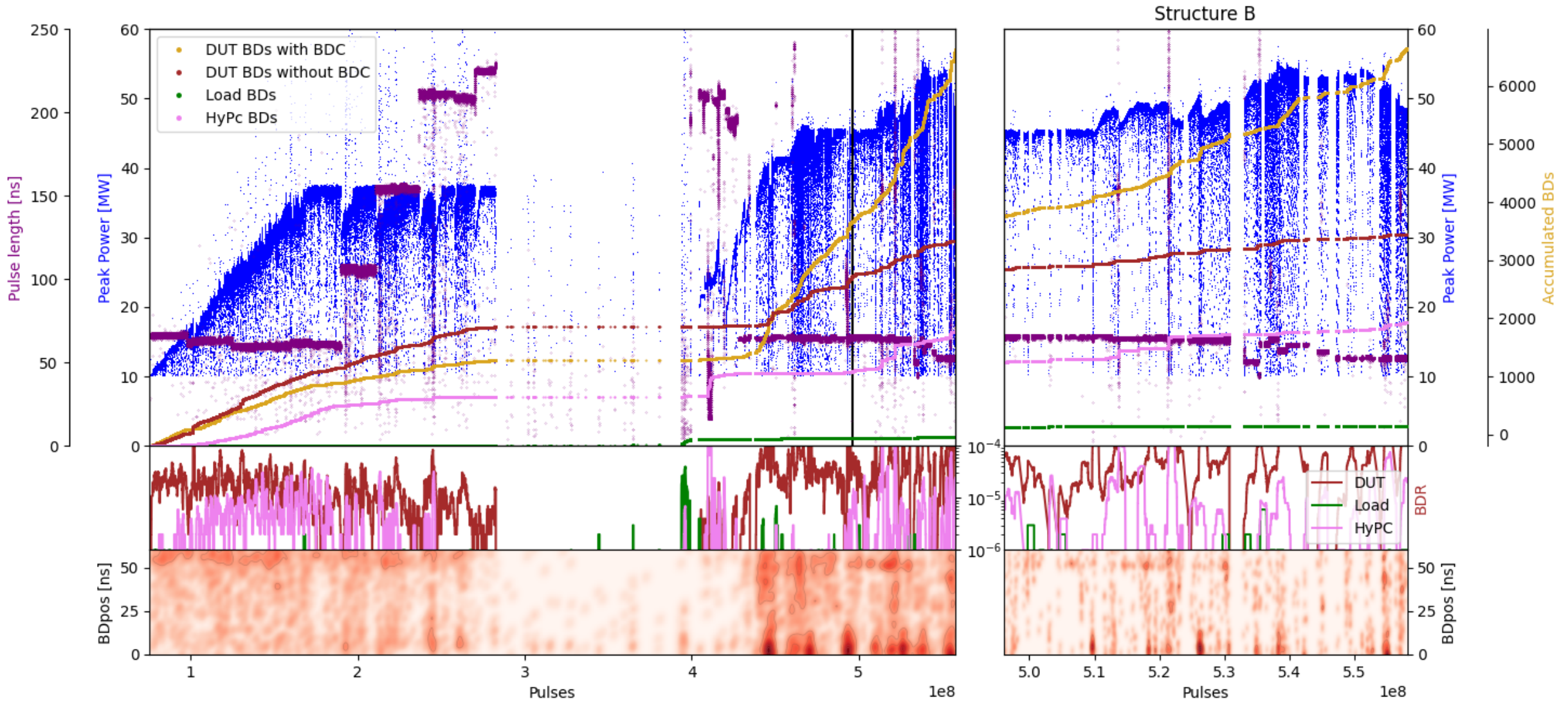
- **Restarted 26.01.2024**
- 100:1 ratio, all power to Structure B
- Pulse width 50ns
- **Running flat for >3 weeks now**
 - Setpoint DUT 48MW
 - BDR 1e-4
- **Electrical storm yesterday**
 - IGBT HVPS#3
 - Volt interlock in HVPS#1



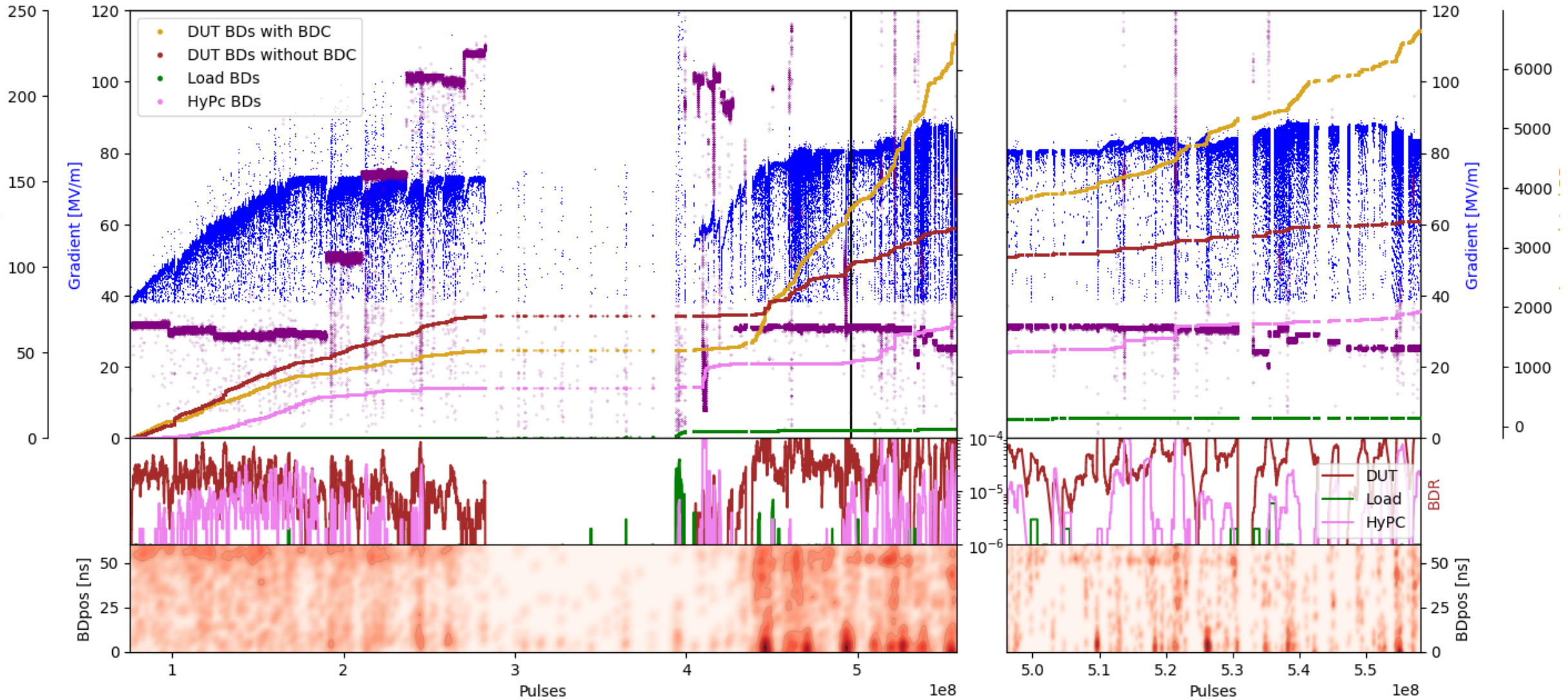
X-Box 2: Reminder on BD classification



X-Box 2: TD31 N3 N4 Structure B – Peak Power

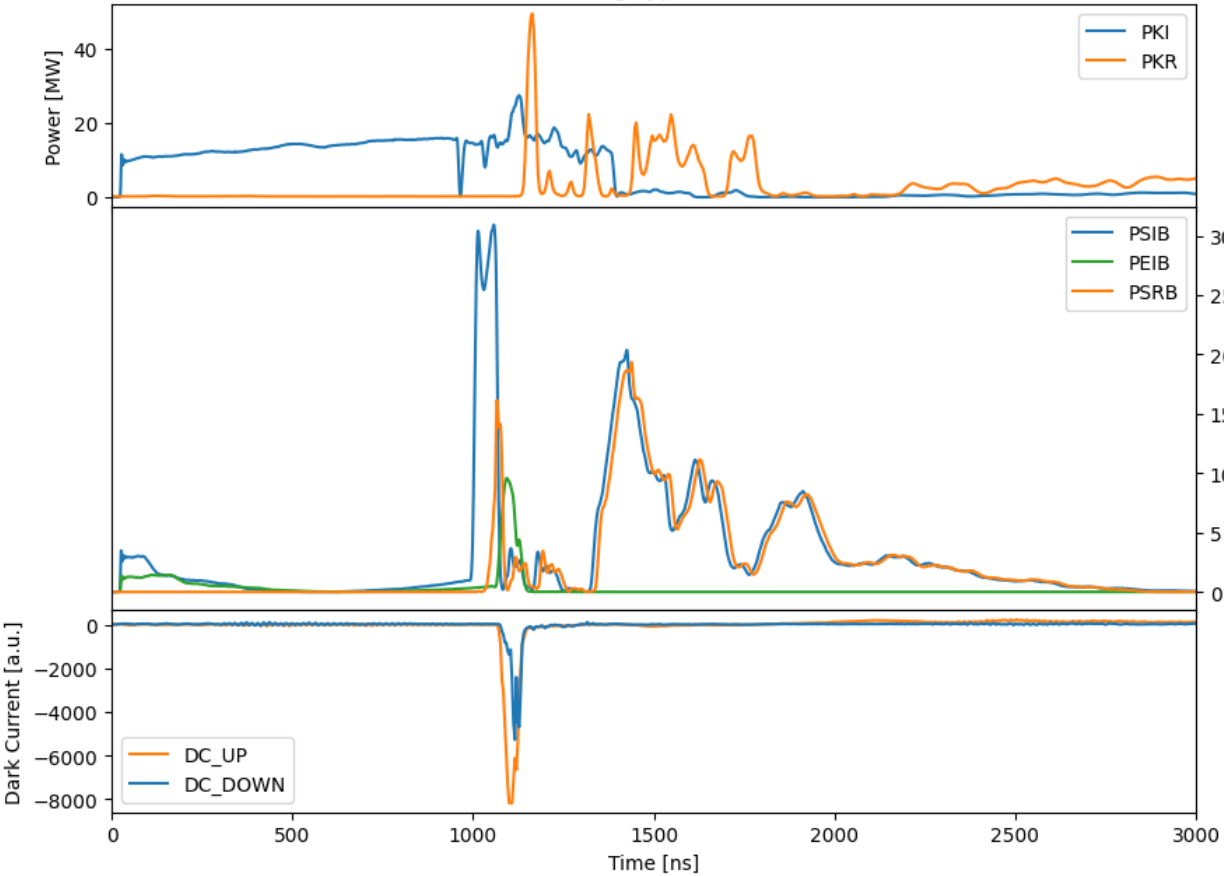


X-Box 2: TD31 N3 N4 Structure B – Gradient

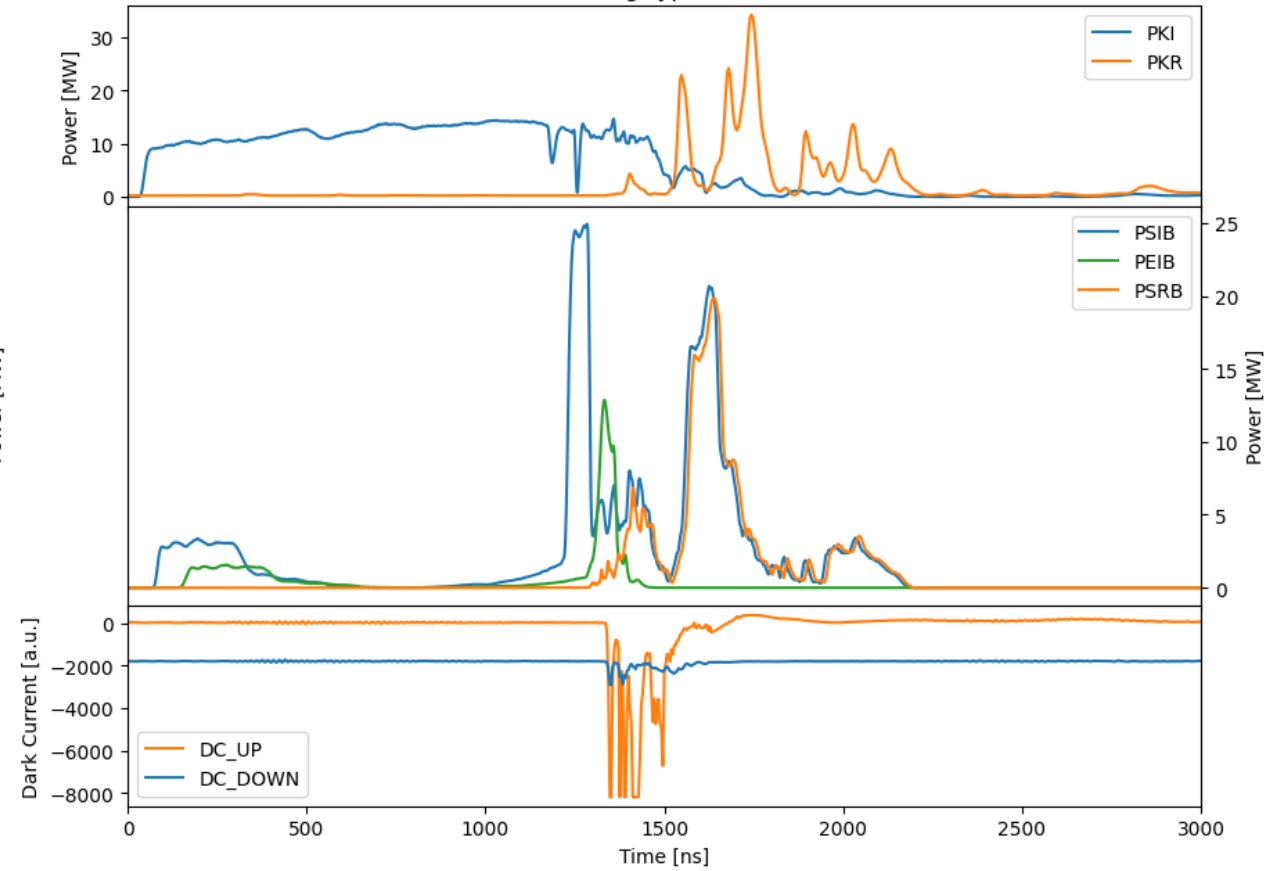


X-Box 2: BD pulse 545436388 vs BD pulse 555015535

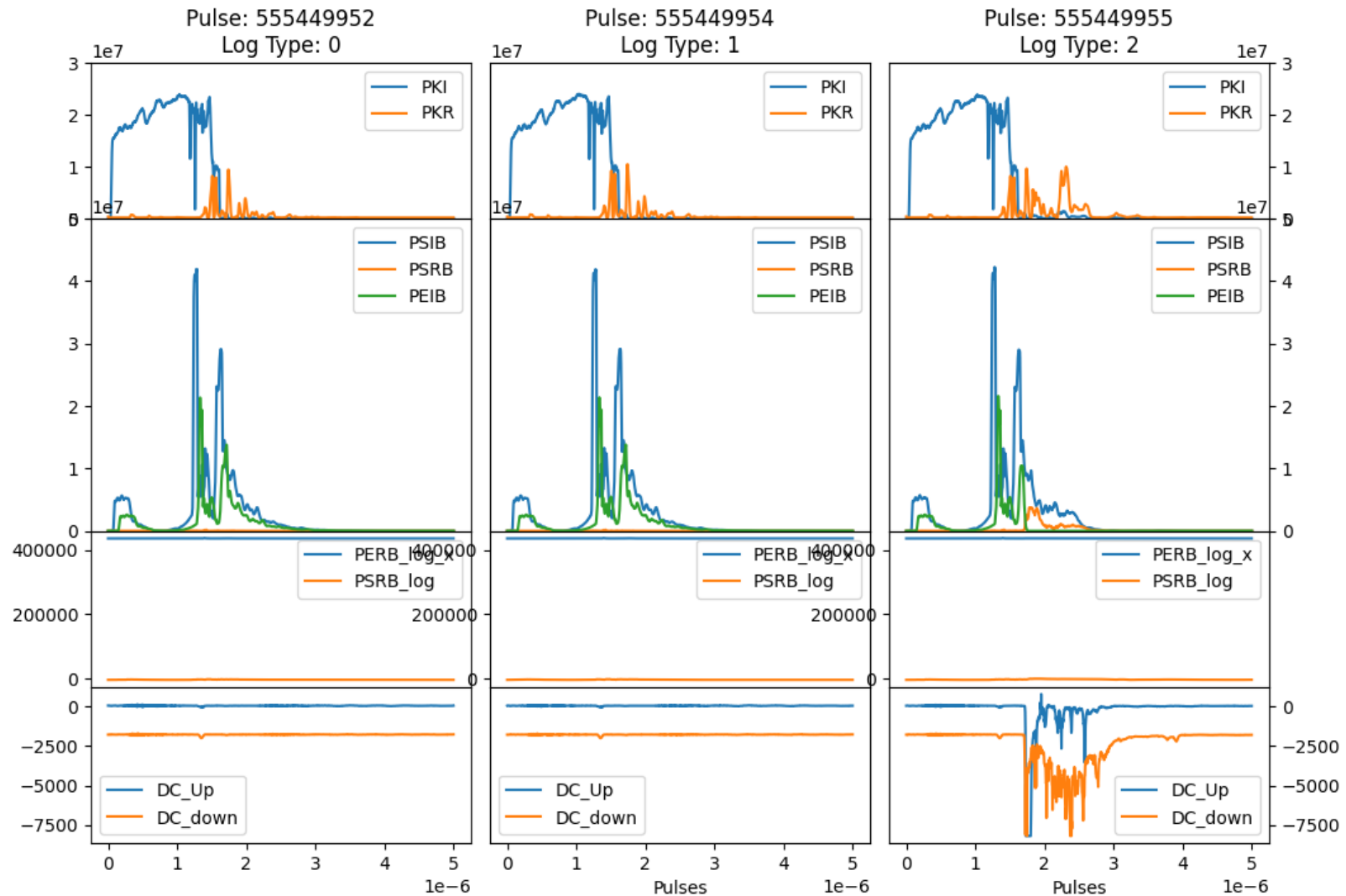
Pulse 545436388
Log Type: 2



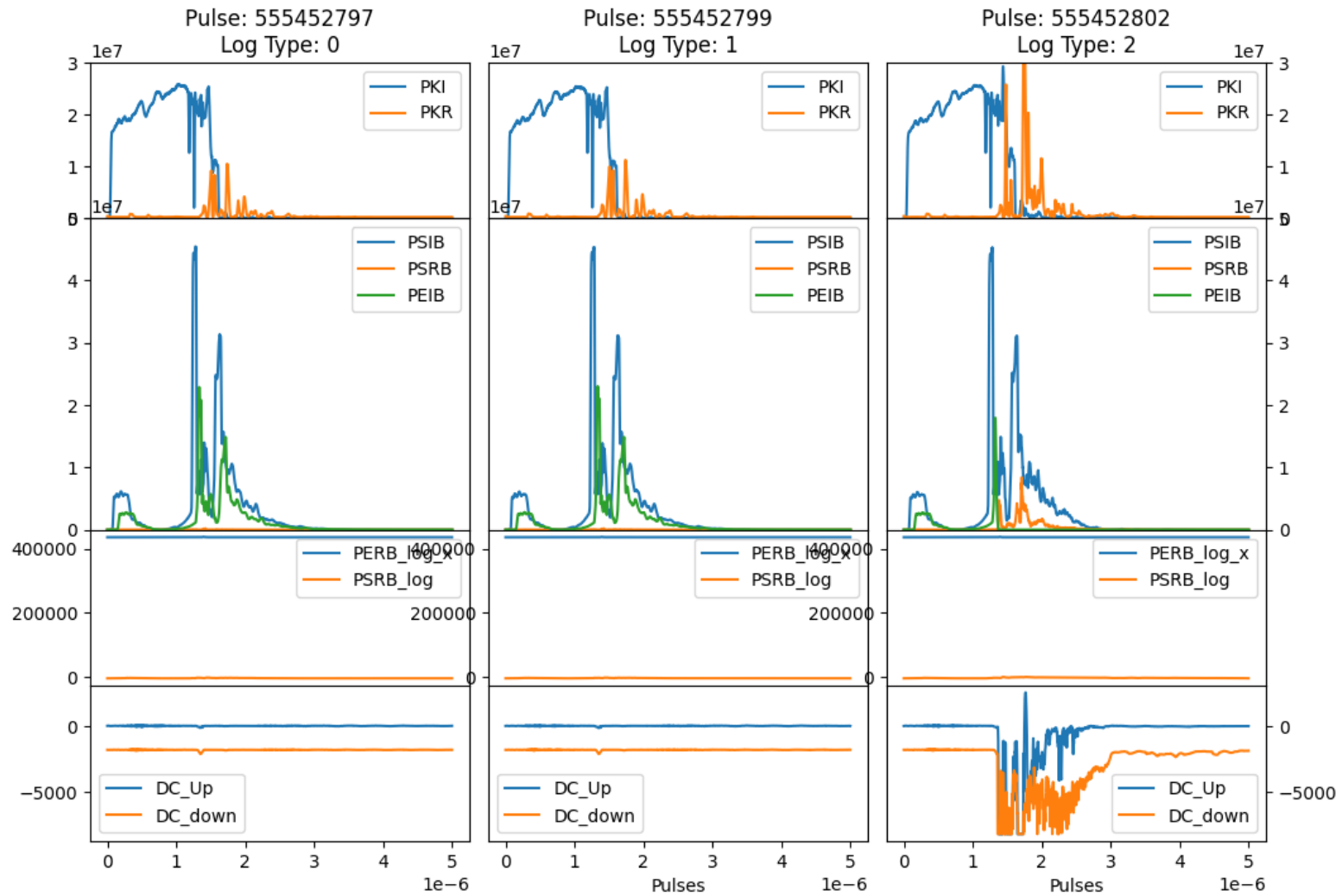
Pulse 555015535
Log Type: 2



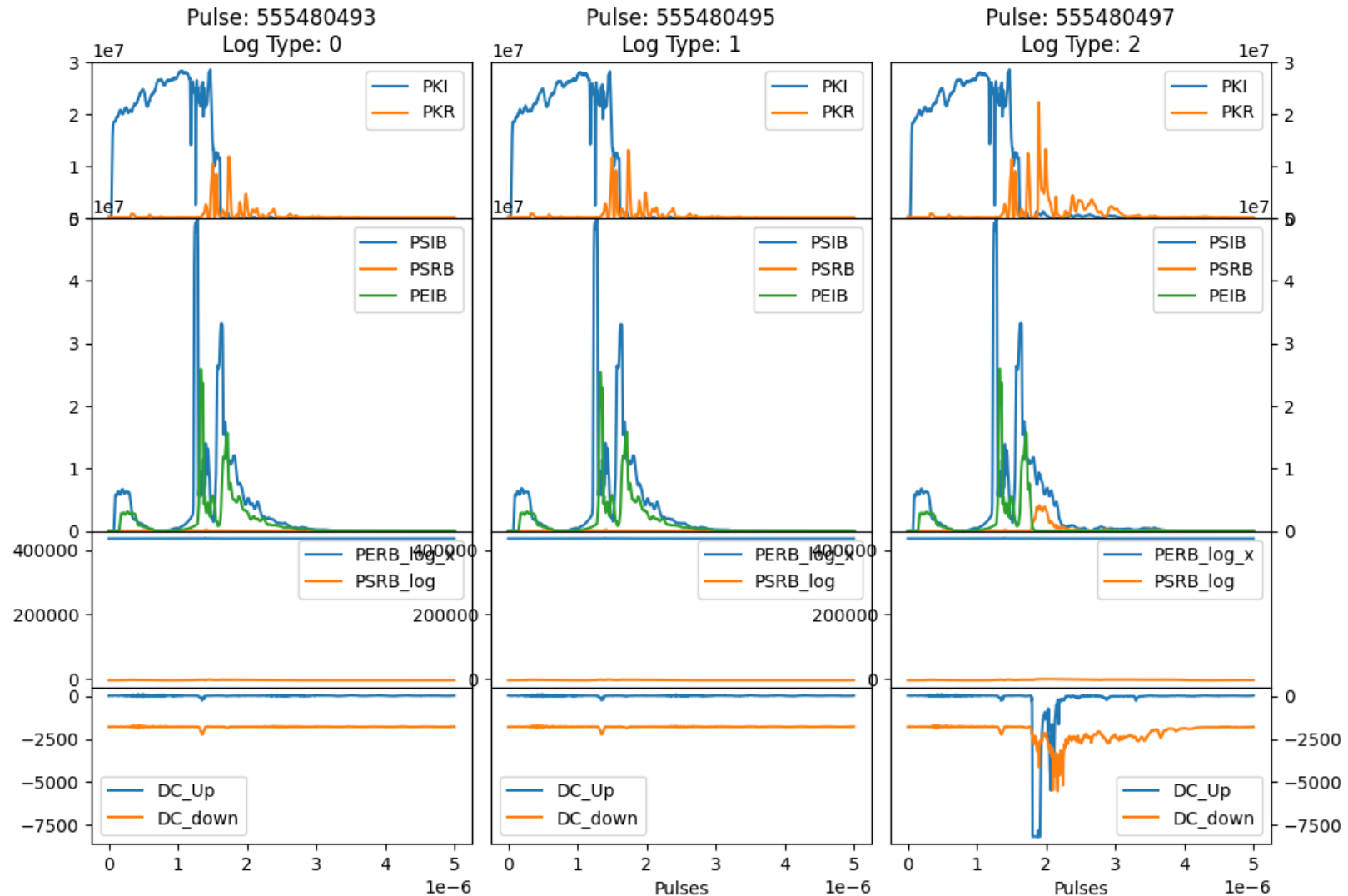
X-Box 2: 20 June 2024 Pulse 555449955



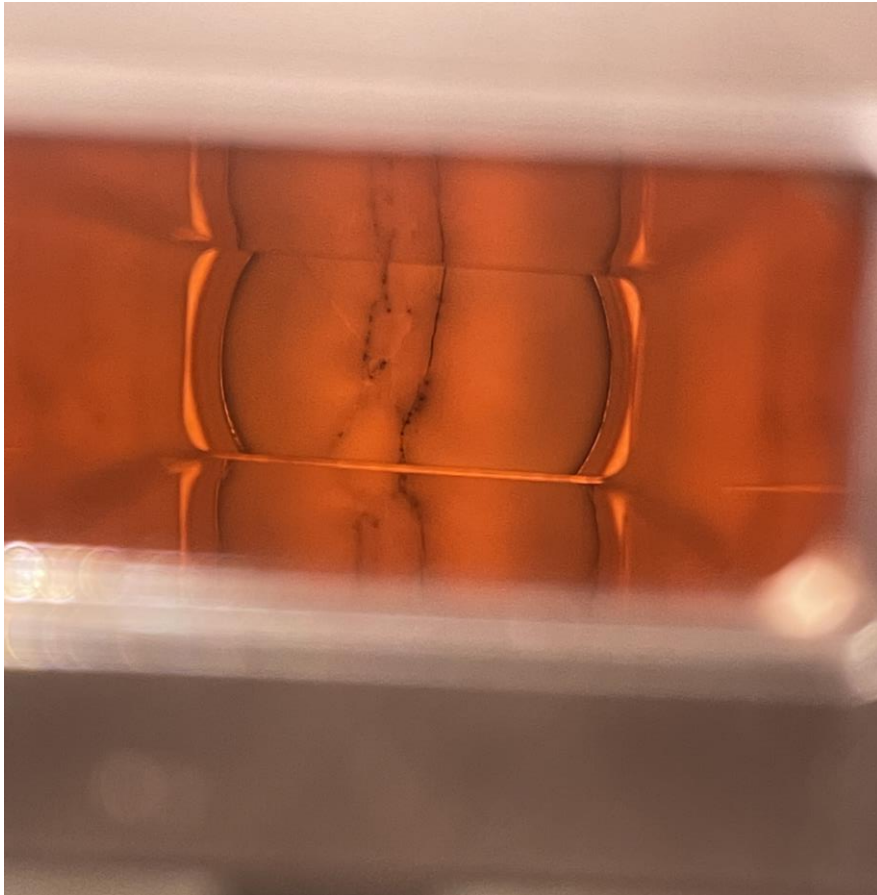
X-Box 2: 20 June 2024 Pulse 555452802



X-Box 2: 20 June 2024 Pulse 555480497



X-Box 3: High Efficiency Tubes Characterisation



- Changing E37117 (kly A) for E37123 tube
- Send ER37117 back to Canon for repair
- Calibration of CVD in collaboration with EPC-HPM
- Refurbishing of Labview application to measure klystrons



home.cern