



Outreach efforts by ASP alumni

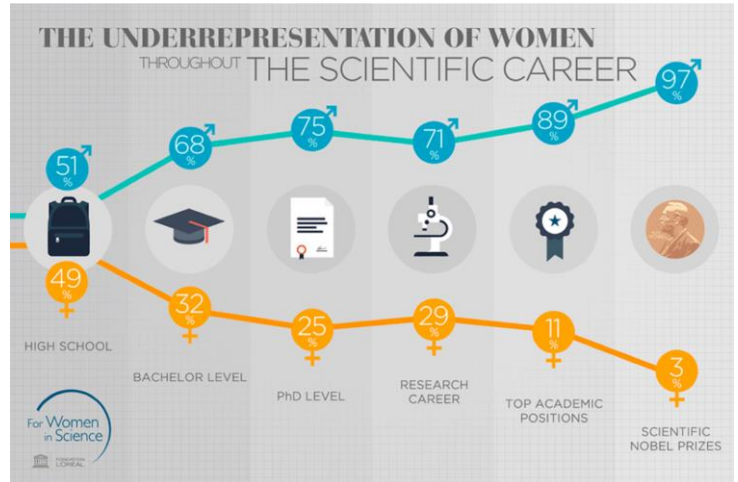
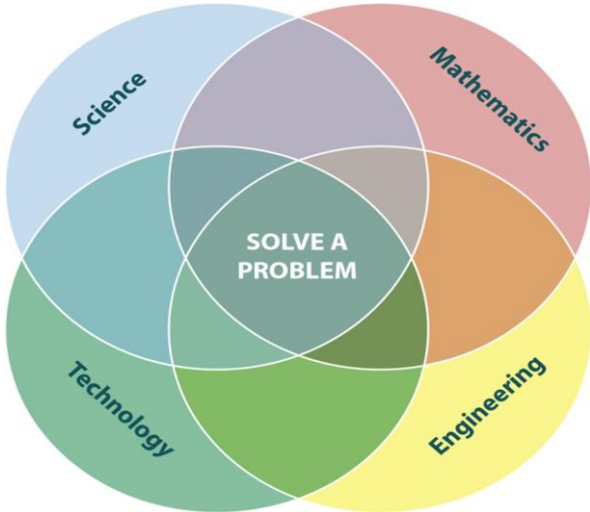
By Marie Chantal Cyulinyana, PhD
ASP2016Alumni
STI Foresight Analyst at NCST, Rwanda,
RAWISE President
Honorary Lecturer at University of Rwanda

ASP2024 Forum , 13th July 2024

Our mission is to increase the number of women in Science, Technology, Engineering and Mathematics (STEM); to train and empower capable and skilled women in different areas of STEM; and to develop an entrepreneurship and research spirit in Rwandan women.



Why Women in STEM?



RAWISE Coordination



OUTREACHES
AND
MENTORSHIP



EVENTS
WORKSHOP,
CONFERENCE,
TRAININGS
ORGANIZATION



PARTNERSHIP
AND
FUNDRAISING



RESEARCH/ PROJECTS

In support of the United Nations Sustainable Development Goals 2030, RAWISE aims to accomplish the following by 2030 specifically **Goal #5: Gender Equality** and **Goal #4: Quality Education**

Encourage Female Students:

By 2030, our goal is to connect with 5,000 young women via outreach activities at secondary schools, and encourage them to pursue studies in Sciences and Engineering.

Increase Participation:

By 2030, our goal is to increase the participation rate of women in STEM research, teaching, and leadership.

Promote Collaboration:

By 2030 our goal is to increase the amount of research published by Rwandan female scientists

Emphaze and Address Problems:

By 2030, our goal is to influence the development of Government Policy, such that gaps in current support for Rwandan women, are understood and addressed.

Recognize and Amplify Voices:

By 2030, our goal is to reach parity in gender representation of speakers at academic workshops.



RAWISE

Rwandan Association for Women in Science and Engineering

RAWISE is an association of Rwandan women who aim to promote female participation in science , technology , engineering and decision-making



Core Values

Solidarity, Excellence, Equality, Strive for a Better Future



AIMS

RAWISE
Rwanda Association for Women in Science and Technology

UR
Kepler

Celebrating 2024 International Women's Day
with Women in STEM & Supporters

Join us for a fun Walk & Run event!

When? Sunday 3rd March, at 7am
Where? Kigali. Starting points are BK Arena & St Famille roundabout.
Meeting point is Kigali Heights, Kimihuruka

#IWD2024 #InspireInclusion #STEMEmpowersHer #RwandaVision2050Equality



RAWISE Membership

150+ members, all women with Masters or PhDs in STEM fields.



An Overview Women in Physics in Rwanda

Challenges

- Underrepresentation
- Gender Bias
- Sociocultural Factors
- Work-Life Balance
- Lack of Support Networks
- Policy and Institutional Barriers
- Imposter syndrome



Some initiatives

- Empowering Women in Physics
- Increasing Representation
- Outreach and mentorship programs
- Networking and Collaboration
- Involvement in research
- Achievement celebrations

RAWISE Achievements

RAWISE achievements since its inception:

- Members increased from 25 to more than 150
- Increased representation of women in STEM leadership positions.
- Growth in the number of women obtaining PhDs in STEM fields.
- Higher enrollment of women researchers in PhD programs.
- Impacted over 5,000 high school students.
- Engaged more than 2,000 undergraduate students.
- Organized biennial RAWISE Symposiums.
- Established sustainable local and international partnerships.
- Created a platform for capacity building for members.
- Fund mobilization initiatives
- Developed a resource-sharing platform.
- **Different MOU have been signed**
- Members Recognition Nationally and internationally



Summary of some RAWISE Past activities

Outreach in secondary schools and Universities

RAWISE itself, in collaboration with OWSD NC, FEMENOC MS initiative, AIMS TTP,...)

Career development workshops

sponsored by OWSD , NSCT, UNESCO, ICTP, EAIFR, UR, ect.

Gender focused projects

2 projects are in have been awarded, collaborating with UK university and UR

RAWISE SYMPOSIUM

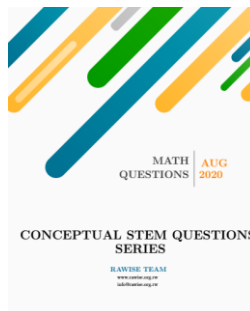
Soft skills, scientific research presentations

Celebration WIS and science Events

IWGS, WIS Awards ceremony)

RAWISE response to covid-19

motivational message, conceptual questions & experimental activities



CONCEPTUAL STEM QUESTIONS TO HELP SECONDARY SCHOOL STUDENTS REVISING THEIR LESSONS WHILE STAYING HOME PHYSICS



2020

RAWISE TEAM
www.rawise.org.nk
info@rawise.org.nk
7/04/2020



Question



RAWISE

Rwandan Association for Women in Science and Engineering

Appendix

More information:

[RAWISE - Rwandan Association for Women in Science and Engineering](#)

[Population Distribution in Rwanda 1950-2022](#)

[RWANDA Overview, World Bank](#)

[RWANDA Wikipedia Page](#)

[BBC News Rwanda Country Profile](#)

[United Nations Development Program - Africa](#)

[Rwanda National Gender Policy 2021](#)

[Goal 5: Gender Equality | Sustainable Development Goals | United Nations](#)

[Rwanda Standards Board: Gender Equality Seal, Gender Equality Standards](#)

[STEM Education in Africa: Risk and Opportunity](#)

[STEM Education Progress in Rwanda](#)

[2022 Rwanda Labor Force Survey Statistics](#)