



**EVERSE Task 1.2**  
**Towards EVERSE Communities, the ELIXIR example**  
*Communities governance in ELIXIR Europe*  
5 June 2024



*European Life Sciences Infrastructure for Biological  
Information*

[www.elixir-europe.org](http://www.elixir-europe.org)

# EVERSE Task 1.2 (M01-M35): Outreach to a wide range of science communities to involve them in the network

This task aims to develop documentation outlining the process for communities to join EVERSE as partners, identify relevant communities and offer onboarding support, including hackathons, to accelerate their involvement in the project.

- Develop comprehensive documentation outlining the mechanisms through which other communities can join EVERSE as partners or affiliates.
- Identify communities that would benefit from participating in EVERSE and leverage the experience of partners in coordinating cross-cluster research infrastructures and associated communities, such as the EOSC Life project, and facilitating cross-domain working groups in the EOSC Future project and with European Research Infrastructure Communities. Establish contact with these communities to encourage their participation.
- Offer onboarding support to new communities, providing assistance and appropriate opportunities, such as hackathons, to accelerate their progress and involvement in EVERSE.

**Participants' Roles: Lead: ELIXIR (coordinate engagement, outreach and workshops), co-Lead: OpenAIRE (connection to cross-domain working groups and communities) Participants: UvA (ENVRI Environmental Research Infrastructure, community input), CNRS-IJCLab (Nuclear and astrophysics/cosmology communities), CU (LINDAT/CLARIAH-CZ and SSHOC / Digital Humanities**

# EVERSE Task 1.2: a summary

- 1) Components of documentation:
  - Criteria for eligibility.
  - Application process.
  - Partnership benefits and responsibilities.
- 1) Target Communities examples:
  - **ELIXIR communities**
  - OpenAIRE
  - ENVRI (Environmental Research Infrastructure)
  - Nuclear and astro-physics/cosmology communities
  - Digital Humanities communities
- 1) Support Mechanisms:
  - Dedicated support team for assistance.
  - Regular webinars and Q&A sessions.
- 1) Opportunities:
  - Hackathons and collaborative events.
  - Mentorship programs.
  - Integration into existing EVERSE projects and activities.

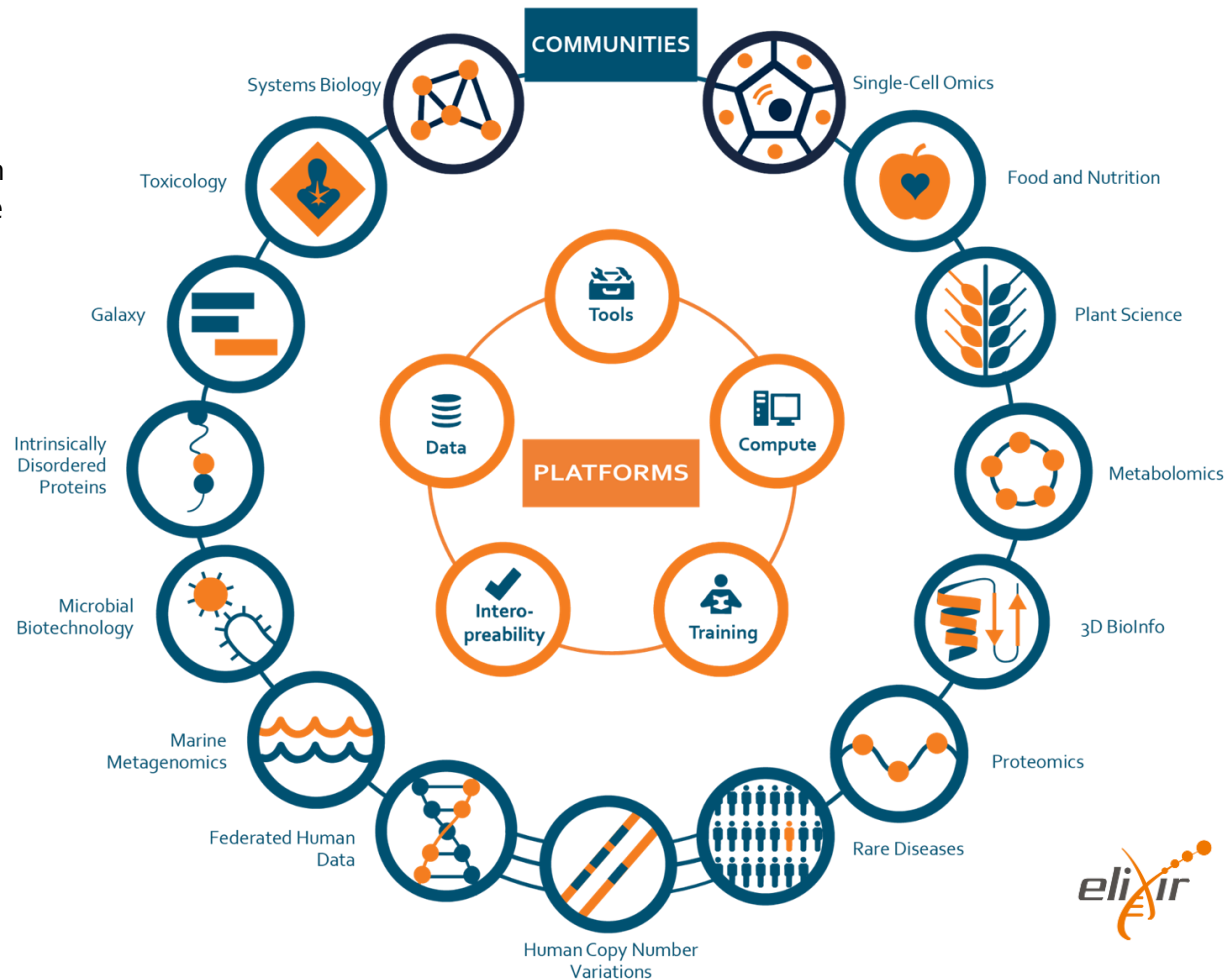
# ELIXIR communities as an example

## Components of Documentation

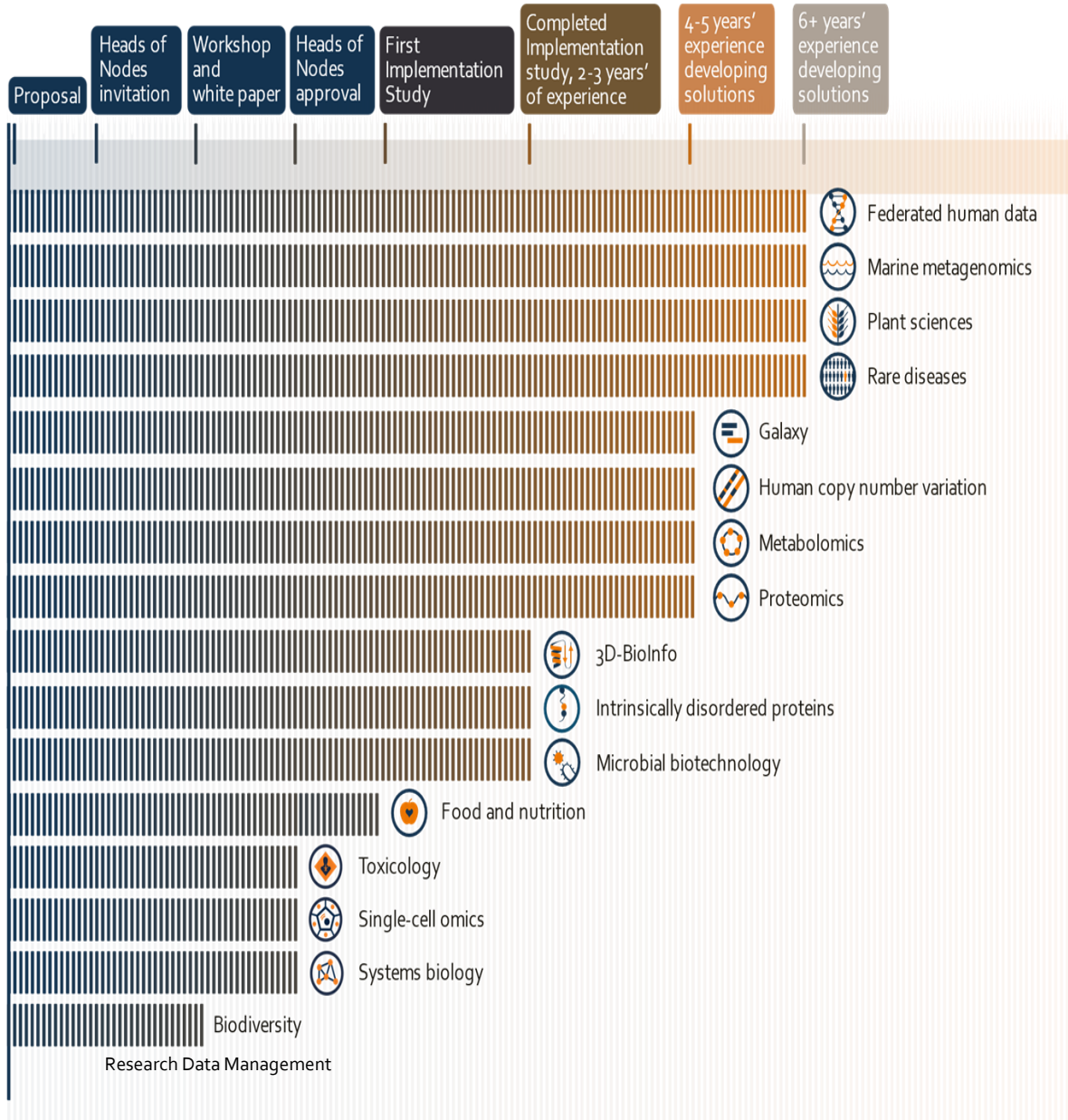
- Criteria for eligibility.
- Application process.
- Partnership benefits and responsibilities.

# ELIXIR Communities connect infrastructure with life-science research experts

- Scientific drivers with in-depth knowledge and expertise
- Bring relevance to platforms
- Enable alignment & collaboration with other ESRIs and large-scale initiatives



# ELIXIR Communities – the maturity journey



ELIXIR Communities follow a standard path as they progress towards maturity.

*\*Biodiversity is a Community as of 02/2023*  
*\*Research Data Management is an emerging Community (as of 01/2023)*

# How Do ELIXIR Communities Become Recognised?

Community establishment requires a **bottom-up** initiative.

Incentivising areas of interest to establish a Community around can emerge from a **bottom-up initiative** as well as a top-down suggestion, e.g. via the Heads of Nodes Committee (HoNs).

More information about Communities can be found in the [Communities Handbook](#) (2024 version).

# Community benefits

- Face-2-Face (F2F) Meeting (could be hybrid)
- White paper and Community Roadmap
- Access to Commissioned Service Funding
- Network, Interaction and Visibility
  - Collaboration
  - All Hands Meeting
  - BioHackathon Europe
- Communication, Outreach and Branding
  - Website
  - Community mailing lists
  - Online Presence/Branding
  - Webinar Support
- Technical and Scientific Support
  - Hub Representatives
  - Funding Opportunities
  - SAB & HoN Community feedback
  - Career Development and Visibility
  - Impact Assessment
- Additional Support
  - Shared folder
  - Zoom/Online meeting support / strategy
  - Communities (meeting) Calendar
  - Slack



# Community contributions and responsibilities

Every established ELIXIR Community is expected to undertake the following activities:

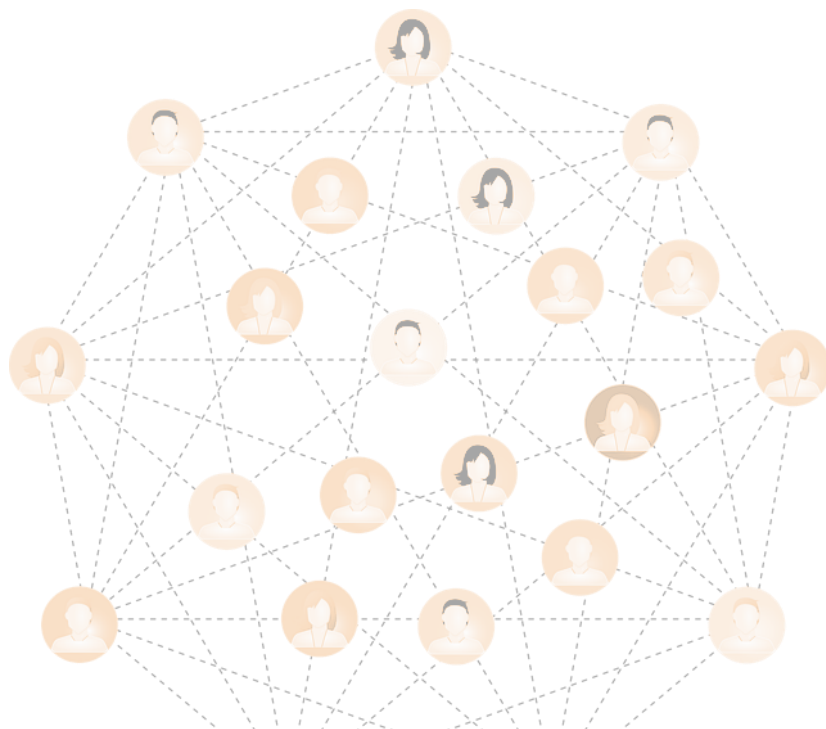
- Three Community calls per year (organised by the Community, inviting the whole Community)
- Annual Meeting (F2F or virtual)
- Supply content to maintain the website up to date (at least annual updates)
- Continued effort working towards the Community aims (as defined in the white paper goals), or provide a published update of the Community goals
- Community co-lead sharing updates during Programme TC's (every two months)
  - Presentation at Programme TC's (when called upon)

Encouraged contributions

- *All Hands Meeting attendance (by at least one Community co-lead/Community representative)*
- *Contribution to the ELIXIR All Hands meeting (e.g. workshop application, if part of the programme)*
- *Application to Commissioned Services Calls*
- *Contribution to the ELIXIR webinar programme*
- *Participation in external Grant Proposals*

# Community Structure

- Three co-leads drawn from the Nodes
- ELIXIR Hub support (Community liaison)
- Community members (drawn from within ELIXIR)
- Community partners (external to ELIXIR)



**Co-lead 1**  
ELIXIR-NODE

**Co-lead 2**  
ELIXIR-NODE

**Co-lead 3**  
ELIXIR-NODE

**ELIXIR Hub**  
Community Liaison

## Discussion points

- ELIXIR communities exist because of ELIXIR, however EVERSE intends to embed already existing communities
- atm, EVERSE is timebound
  
- What benefits CAN EVERSE offer to communities?
  - **Network, Interaction and Visibility**
  - **Logistics support:** Communication, Outreach and Branding (?)
    - Will there be a dedicated person in EVERSE responsible for communities? (Eg ELIXIR Hub?)
  - **Technical and Scientific Support** (?) (“Hub Representatives”, Funding Opportunities, Community feedback, Career Development and Visibility, Impact Assessment )
  - **Additional Support** (Shared folder, Zoom/Online meeting support /



**EVERSE Task 1.2**  
**Towards EVERSE Communities, the ELIXIR example**  
*Communities governance in ELIXIR Europe*  
5 June 2024



*European Life Sciences Infrastructure for Biological  
Information*

[www.elixir-europe.org](http://www.elixir-europe.org)