



Coordinator report



Feedback from first runs of 2024

Statistics so far: 147 shifts, 18 “runs”

- INTC proposals and LOIs: 13 runs
- TISD measurements: 26 shifts (no experiments wanted to run first 2 weeks, opportunistic, ...)
- Stable beam to commissioning setup: CRIS, ECSLI (~9 shifts)
- Irradiation for winter physics targets: 10 shifts
- Running at the moment:
 - GPS: 5 experiments, 3 LOIs using 111mCd for PAC
 - HRS: ISOLTRAP

Also

- A few hours every few weeks: scans to improve optics model of ISOLDE
- Oil sampling from pumps separator areas: RP concerns in case of fire

Feedback from first runs of 2024

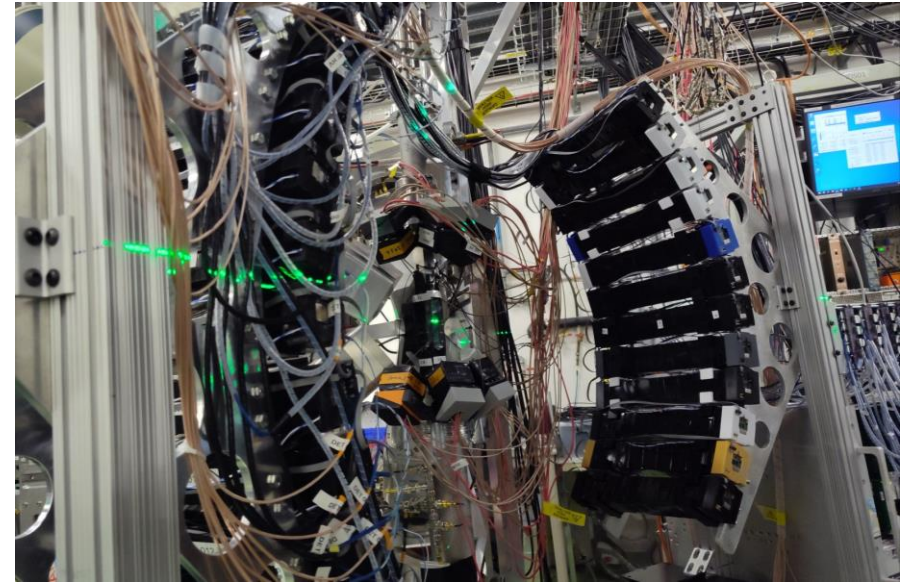
Highlights

- LOI258: first production of Pa beams at ISOLDE
- IS688: record activities during 149Tb collections for targeted alpha therapy sent to PSI
- IS733: Decay spectroscopy on neutron-rich K with spin-polarized beams, first physics data for DeVITO
- IS662: new set of neutron detectors at IDS work well (ongoing experiment)
- IS688: Study of colour centers in diamond by implanting ^{75}Ga

Most experiments were at least partly successful

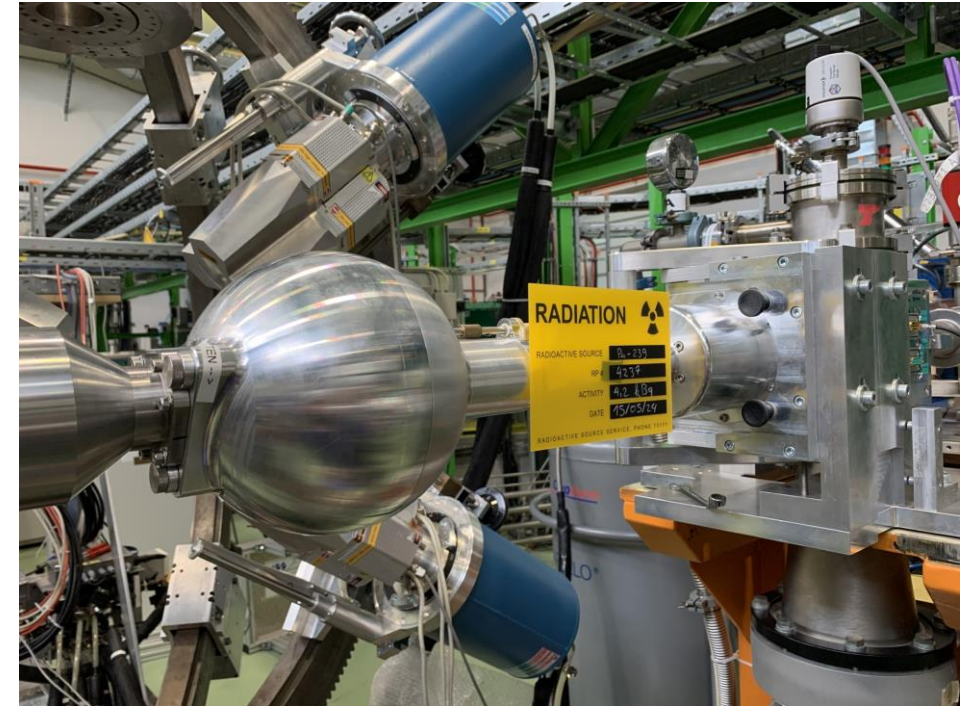
- 1.5 runs with issues at experiment side
- 2 runs with target problems

Thanks to machine supervisors, target team and RILIS for efficiently solving problems (smaller and bigger)!



Safety

- Crane – Transport service (temporary measure)
- Safety files – EP safety
 - Plan inspections before run (if modifications are made to the regular setup)
- Procedures – EP safety
- Radioactive sources – Radioactive Source Management Service
 - Alpha sources
 - (\neq implanted samples)
- Training for newcomers to ISOLDE
 - Classroom training: RP and electrical safety
 - Book at least 14 days in advance
 - No ad-hoc training



ISOLDE schedule 2024

- Protons for physics to ISOLDE from 8 April – 25 November (4 weeks longer than originally foreseen 😊)
- Winter Physics (low E only) until 9 December
- Separator course 10-11 December (TBC)
- Preliminary 2025 schedule: 25.03 - 17.11 (protons for physics)
- LS3 for ISOLDE: no physics for 2026 and 2027 (TBC)

Schedule 2024: weeks 14 - 35
Version: 12/06/2024 by H. Heylen and C. Duchemin



GPS Physics	Target change
HRS physics	



HRS indirect	External source
HRS direct	GPS ISIS

Production
Development

April								May								June							
	GPS	HRS	RILIS	MEDICIS	MELISSA				GPS	HRS	RILIS	MEDICIS	MELISSA				GPS	HRS	RILIS	MEDICIS	MELISSA		
14 Mon	1					18 Wed	1	IS688 - 149Dy (nights) GLM	K/In stable - CRIS			Direct [Ra-224-225] Retrieval		22 Sat	1	IS659 - 9Li (IDS) + IS668 - 75Ga (GHM)			Ga				
Tue	2					Thur	2				Dy				Sun	2							
Wed	3	#851-Pa - VD5		1 shot direct 1e13		Fri	3						#835- IS725 - winter physics irradiation		Mon	3							
Thur	4					Sat	4								Tue	4	#858-UC-MK1(Ta)						
Fri	5	LOI258 - Pa	#818-UC-MK1(Ta)			Sun	5								Wed	5							
Sat	6					Mon	6								Thu	6							
Sun	7					Tue	7			IS678 - 32Ar			Dir. #833M-Ta-Ta		Fri	7	#534-Sn-VD7	Stable beam CRIS			Direct 08:30 #834M	Ra	
15 Mon	8		#835 UC MK1(Ta)			Wed	8	#727M-Pb-VD5				Dir. #833M-Ta-Ta		Sat	8		IS737 - 177-188Au			Indirect [Dy/Tb-155]			
Tue	9	#849-Ta-VD5				Thur	9					Ind. #833M-Ta-Ta		Sun	9						Indirect		
Wed	10					Fri	10					Ind.		Mon	10						Indirect		
Thur	11	TISD - Tb production				Sat	11					Ind.		Tue	11	Stable beam ASCII							
Fri	12					Sun	12							Wed	12	#839-UC-MK1(Ta)							
Sat	13					Mon	13	IS668 - GLM+GHM				Ind.		Thur	13	Tech. stop (no p+) oil sampling	Tech. stop (no p+) oil sampling					Tb	
Sun	14					Tue	14	#855-UC-n-MK1(Ta)				Retrieval		Fri	14								
16 Mon	15	#831-Nb-MK4 (neg)	#821-UC-MK1(Ta)			Wed	15							Sat	15								
Tue	16					Thur	16							Sun	16								
Wed	17					Fri	17						1h indirect beam	Mon	17	111mCd - GLM, LOI248, LOI249, IS713, IS730, IS732, IS738	IS737 (cont.)						
Thur	18	LOI259 - 70Br (neg)				Sat	18	IS662 - 132,134In			In			Tue	18								
Fri	19	IS643-CI- Gandolph GLM				Sun	19							Wed	19								
Sat	20					Mon	20							Thur	20								
Sun	21					Tue	21							Fri	21								
17 Mon	22	IS643 (cont.)				Wed	22							Sat	22								
Tue	23	#853-Ta-MK1(Ta)				Thur	23							Sun	23								
Wed	24					Fri	24							Mon	24	#820-La(liq)-MK1(Ta)							
Thur	25					Sat	25							Tue	25								
Fri	26					Sun	26							Wed	26								
Sat	27					Mon	27	#857-UC-MK1(Ta)						Thur	27								
Sun	28	IS688 - 149Dy (nights) - GLM				Tue	28							Mon	28								
18 Mon	29					Wed	29							Tue	29								
Tue	30					Thur	30							Sat	30								
						Fri	31							Sun	31								

July								August								September							
	GPS	HRS	RILIS	MEDICIS	MELISSA				GPS	HRS	RILIS	MEDICIS	MELISSA				GPS	HRS	RILIS	MEDICIS	MELISSA		
27 Mon	1	#865-UC-MK1(Ta)	#774-Lac-MK1(Ta)			31 Thur	1								Sun	1							
Tue	2					Fri	2								Mon	2							
Wed	3					Sat	3								Tue	3							
Thur	4					Sun	4								Wed	4							
Fri	5	IS529-54Ca				Mon	5							Thu	5								
Sat	6					Tue	6							Fri	6								
Sun	7					Wed	7							Sat	7								
28 Mon	8	#835-UC-MK1(Ta)				Thur	8							Sun	8								
Tue	9					Fri	9							Mon	9								
Wed	10	IS725 - 226Ra coll. - GLM (no p+)				Sat	10							Tue	10								
Thur	11					Sun	11							Wed	11								
Fri	12	#866-UC-VD5				Mon	12	#868-TaC-MK1(Ta)						Thur	12								
Sat	13					Tue	13							Fri	13								
Sun	14	IS686 - 108Sn - ISS				Wed	14	TISD - 9Li - tapestation						Sat	14								
29 Mon	15					Thur	15							Sun	15								
Tue	16					Fri	16	#869-ZrO-MK1(Ta)						Mon	16								
Wed	17					Sat	17							Tue	17								
Thur	18					Sun	18							Wed	18								
Fri	19					Mon	19							Thu	19								
Sat	20	IS702-134SnS - Miniball				Tue	20							Fri	20								
Sun	21					Wed	21							Sat	21								
30 Mon	22					Thur	22							Sun	22								
Tue	23					Fri	23							Mon	23								
Wed	24					Sat	24	IS675 - 61Zn - ISS						Tue	24								
Thur	25					Sun	25							Wed	25								
Fri	26	#867-UC-VD5				Mon	26							Thur	26								
Sat	27					Tue	27	#810-UC-n-hq-MK1(Ta)						Fri	27								
Sun	28					Wed	28							Sat	28								
31 Mon	29					Thur	29							Sun	29								
Tue	30					Fri	30							Mon	30								
Wed	31					Sat	31	IS646 - 79Zn						Tue	31								

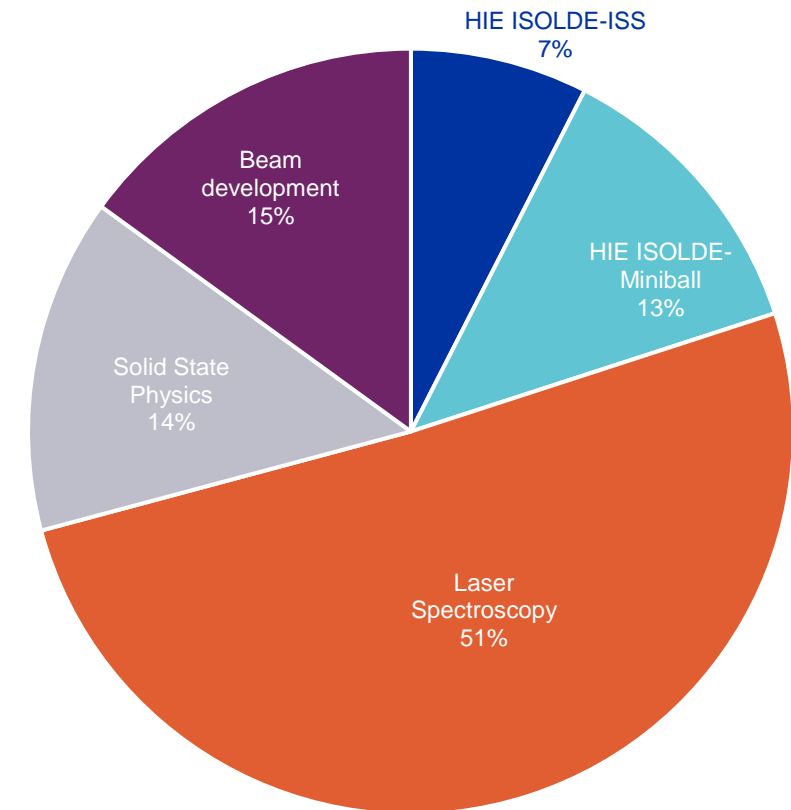
INTC 76 summary - ISOLDE

Row Labels	# documents	Requested shifts	Awarded shifts
ISOLDE	12	120	92
Letter of Clarification	1	9	9
Letter of intent	4	23	23
Proposal	7	88	60
Grand Total	12	120	92

Recommendation for approval by the Research Board

- 2 letters of clarification, 9 full approval, 1 not approved
- 92 shifts (out of 120 requested)

ISOLDE
Distribution of requested shifts per topic



Accepted shifts

- ISOLDE community is well-informed and not unhappy with situation
- The different experimental collaborations have different ways of managing proposals
- During scheduling, priorities are determined in consultation with collaborations considering factors such as:
 - Scientific priorities
 - Equipment availability
 - PhD students waiting for data
 - Technical developments

How to deal with this? (as discussed recently by INTC)

- All experiments will be automatically closed during LS3
- Review INTC policy during LS3
 - Ranking proposals difficult due to scientific diversity
 - Concern of workload and resource management of technical teams → best implemented during scheduling
- Ongoing projects to increase capacity of facility

Accepted shifts, situation in March 2024

Instruments	Remaining shifts
ASCII	8
biophysics	2.5
COLLAPS	23
COLLAPS/ISOLTRAP	13
Collections	92
CRIS	160.5
Decay spectroscopy	23
Gandolph	26
GLM/GHM	41
HIE ISOLDE	659
IDS	157.5
IDS, ISOLTRAP, RILIS	21
IDS/ISOLTRAP	6
IDS/TAS	3
ISOLDE upgrade	0
ISOLTRAP	91
LA1/ECSLI	28
Medical physics	44
MIRACLS	17
Multipac	9
SSP	155
SSP/TISD	3
TAS	40
TISD	113
TISD/ISCOOL	6
TISD/Miniball	4
TISD/TDPAC	4
Travelling Setup	19
VITO	34
WISARD	24

Instruments	Remaining shifts
ISS	271
ISS/Miniball	22
Miniball	272
XT03	98

Upcoming INTC meetings

Limit scope of upcoming meetings

- Meeting 12-13 November 2024 - Deadline: 2 October 2024 → Call for proposals will be sent out early next week.
 - Low E (+ n_ToF)
- February 2025
 - Only HIE-ISOLDE (+ n_ToF)
 - Low E (addenda and) CLL ok.
- June 2025:
 - n_ToF + ISOLDE winter physics (low E) – TBC
 - CLL ok
- November 2025: cancelled