



Coordinator report

Feedback from first runs of 2024

Statistics so far: 147 shifts, 18 “runs”

- INTC proposals and LOIs: 13 runs
- TISD measurements: 26 shifts (no experiments wanted to run first 2 weeks, opportunistic, ...)
- Stable beam to commissioning setup: CRIS, ECSLI (~9 shifts)
- Irradiation for winter physics targets: 10 shifts
- Running at the moment:
 - GPS: 5 experiments, 3 LOIs using 111mCd for PAC
 - HRS: ISOLTRAP

Also

- A few hours every few weeks: scans to improve optics model of ISOLDE
- Oil sampling from pumps separator areas: RP concerns in case of fire

Feedback from first runs of 2024

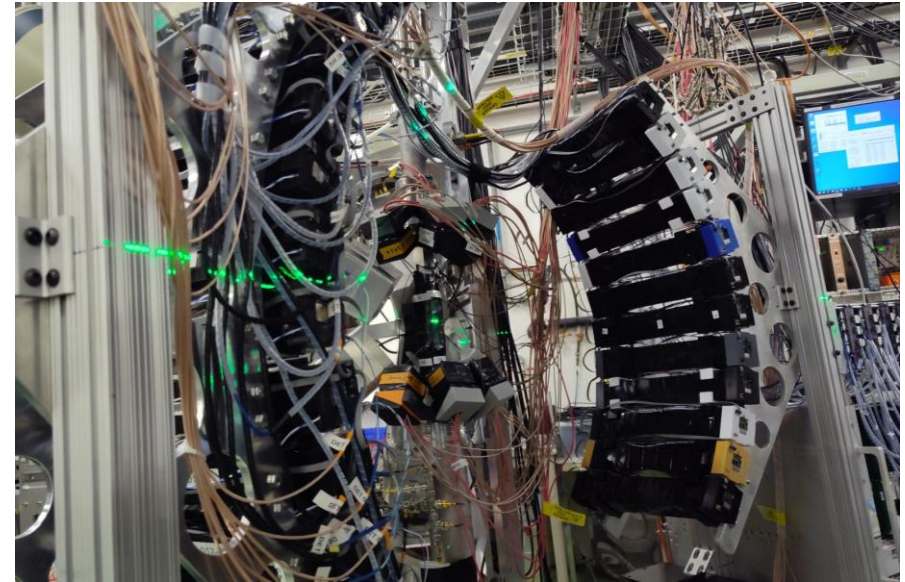
Highlights

- LOI258: first production of Pa beams at ISOLDE
- IS688: record activities during 149Tb collections for targeted alpha therapy sent to PSI
- IS733: Decay spectroscopy on neutron-rich K with spin-polarized beams, first physics data for DeVITO
- IS662: new set of neutron detectors at IDS work well (ongoing experiment)
- IS688: Study of colour centers in diamond by implanting 75Ga

Most experiments were at least partly successful

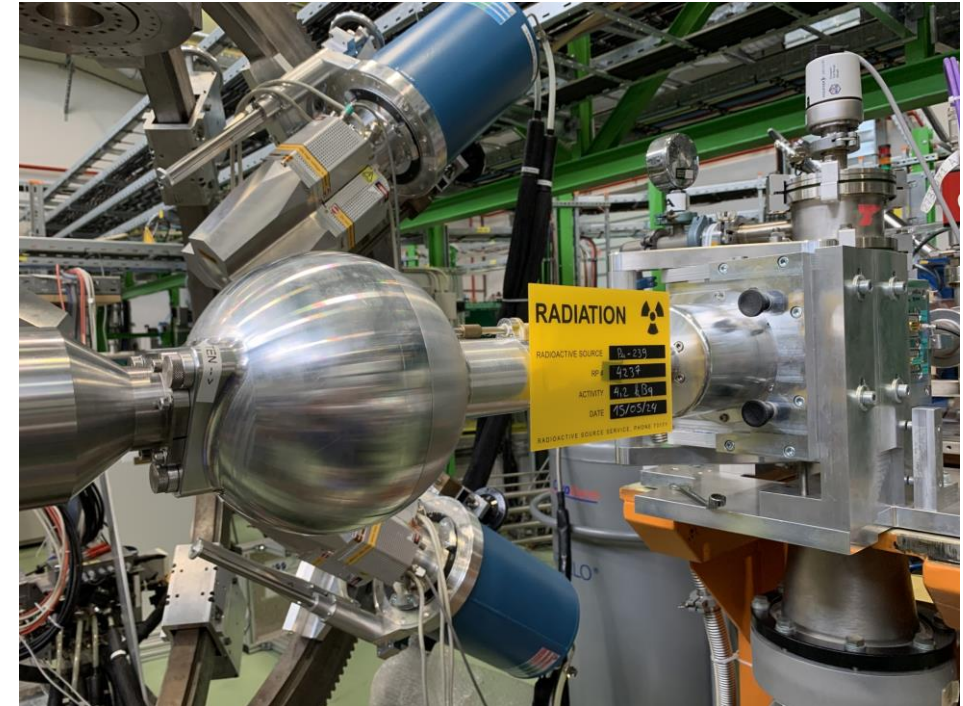
- 1.5 runs with issues at experiment side
- 2 runs with target problems

Thanks to machine supervisors, target team and RILIS for efficiently solving problems (smaller and bigger)!



Safety

- Crane – Transport service (temporary measure)
- Safety files – EP safety
 - Plan inspections before run (if modifications are made to the regular setup)
- Procedures – EP safety
- Radioactive sources – Radioactive Source Management Service
 - Alpha sources
 - (\neq implanted samples)
- Training for newcomers to ISOLDE
 - Classroom training: RP and electrical safety
 - Book at least 14 days in advance
 - No ad-hoc training



ISOLDE schedule 2024

- Protons for physics to ISOLDE from 8 April – 25 November (4 weeks longer than originally foreseen 😊)
- Winter Physics (low E only) until 9 December
- Separator course 10-11 December (TBC)
- Preliminary 2025 schedule: 25.03 - 17.11 (protons for physics)
- LS3 for ISOLDE: no physics for 2026 and 2027 (TBC)

Schedule 2024: weeks 14 - 35
Version: 12/06/2024 by H. Heylen and C. Duchemin



GPS Physics	Target change
HRS physics	



HRS indirect	External source
HRS direct	GPS ISIS

Production
Development

April										May										June									
Day	GPS	HRS	RILIS	MEDICIS	MELISSA	Day	GPS	HRS	RILIS	MEDICIS	MELISSA	Day	GPS	HRS	RILIS	MEDICIS	MELISSA												
14 Mon	1					18 Wed	1	IS688 - 149Dy (nights) GLM	K/In stable - CRIS		Direct [Ra-224-225] Retrieval		22 Sat	1	IS659 - 9Li (IDS) + IS668 - 75Ga (GHM)														
Tue	2					Thur	2						Sun	2															
Wed	3	#851-Pa - VD5		1 shot direct 1e13		Fri	3						Mon	3															
Thur	4					Sat	4						Tue	4															
Fri	5	LOI258 - Pa	#818-UC-MK1(Ta)			Sun	5						Wed	5															
Sat	6					Mon	6						Thu	6															
Sun	7					Tue	7						Fri	7	#534-Sn-VD7														
15 Mon	8		#835 UC MK1(Ta)			Wed	8	#727M-Pb-VD5					Sat	8															
Tue	9	#849-Ta-VD5				Thur	9						Sun	9															
Wed	10					Fri	10						Mon	10															
Thur	11	TISD - Tb production	TISD			Sat	11						Tue	11															
Fri	12					Sun	12						Wed	12															
Sat	13					Mon	13	IS668 - GLM+GHM					Thu	13															
Sun	14					Tue	14	#855-UC-n-MK1(Ta)					Fri	14															
16 Mon	15	#831-Nb-MK4 (neg)	#821-UC-MK1(Ta)			Wed	15						Sat	15															
Tue	16					Thur	16						Sun	16															
Wed	17					Fri	17						Mon	17															
Thur	18	LOI259 - 70Br (neg)				Sat	18	IS662 - 132,134In					Tue	18															
Fri	19	IS643-CI- Gandalph GLM				Sun	19						Wed	19															
Sat	20					Mon	20						Thu	20															
Sun	21					Tue	21						Fri	21															
17 Mon	22	IS643 (cont.)				Wed	22						Sat	22															
Tue	23	#853-Ta-MK1(Ta)				Thur	23						Sun	23															
Wed	24					Fri	24						Mon	24															
Thur	25					Sat	25						Tue	25															
Fri	26					Sun	26						Wed	26															
Sat	27					Mon	27	#857-UC-MK1(Ta)					Thu	27															
Sun	28	IS688 - 149Dy (nights) - GLM				Tue	28						Fri	28															
18 Mon	29					Wed	29						Sat	29															
Tue	30					Thur	30						Sun	30															
						Fri	31																						

July										August										September									
Day	GPS	HRS	RILIS	MEDICIS	MELISSA	Day	GPS	HRS	RILIS	MEDICIS	MELISSA	Day	GPS	HRS	RILIS	MEDICIS	MELISSA												
27 Mon	1	#865-UC-MK1(Ta)	#774-Lac-MK1(Ta)			31 Thur	1																						
Tue	2					Fri	2					Mon	2																
Wed	3					Sat	3	IS742-132SnS - ISS				Tue	3																
Thur	4					Sun	4					Wed	4																
Fri	5	IS529-54Ca				Mon	5					Thu	5																
Sat	6					Tue	6					Fri	6																
Sun	7					Wed	7					Sat	7																
28 Mon	8	#835-UC-MK1(Ta)				Thur	8					Sun	8																
Tue	9					Fri	9					Mon	9																
Wed	10	IS725 - 226Ra coll. - GLM (no p+)				Sat	10					Tue	10																
Thur	11					Sun	11					Wed	11																
Fri	12	#866-UC-VD5				Mon	12	#868-TaC-MK1(Ta)				Thu	12																
Sat	13					Tue	13					Fri	13																
Sun	14	IS686 - 108Sn - ISS				Wed	14	TISD - 9Li - tapestation				Sat	14																
29 Mon	15					Thur	15					Sun	15																
Tue	16					Fri	16	#869-ZrO-MK1(Ta)				Mon	16																
Wed	17					Sat	17					Tue	17																
Thur	18					Sun	18					Wed	18																
Fri	19					Mon	19					Thu	19																
Sat	20	IS702-134SnS - Miniball				Tue	20					Fri	20																
Sun	21					Wed	21					Sat	21																
30 Mon	22					Thur	22					Sun	22																
Tue	23					Fri	23					Mon	23																
Wed	24					Sat	24	IS675 - 61Zn - ISS				Tue	24																
Thur	25					Sun	25					Wed	25																
Fri	26	#867-UC-VD5				Mon	26					Thu	26																
Sat	27					Tue	27	#810-UC-n-hq-MK1(Ta)				Fri	27																
Sun	28					Wed	28					Sat	28																
31 Mon	29					Thur	29					Sun	29																
Tue	30					Fri	30					Mon	30																
Wed	31					Sat	31	IS646 - 79Zn				Tue	31																



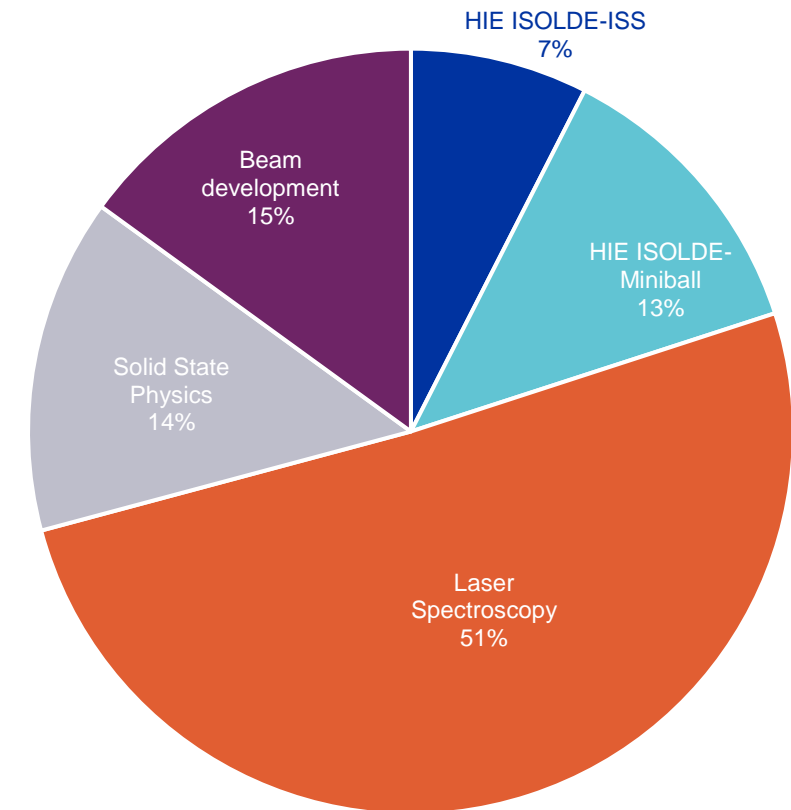
INTC 76 summary - ISOLDE

Row Labels	# documents	Requested shifts	Awarded shifts
ISOLDE	12	120	92
Letter of Clarification	1	9	9
Letter of intent	4	23	23
Proposal	7	88	60
Grand Total	12	120	92

Recommendation for approval by the Research Board

- 2 letters of clarification, 9 full approval, 1 not approved
- 92 shifts (out of 120 requested)

ISOLDE
Distribution of requested shifts per topic



ISOLDE accepted shifts

- ISOLDE community is well-informed and not unhappy with situation
- The different experimental collaborations have different ways of managing proposals
- During scheduling, priorities are determined in consultation with collaborations considering factors such as:
 - Scientific priorities
 - Equipment availability
 - PhD students waiting for data
 - Technical developments

How to deal with this? (as discussed recently by INTC)

- All experiments will be automatically closed during LS3
- Review INTC policy during LS3
 - Ranking proposals difficult due to scientific diversity
 - Concern of workload and resource management of technical teams → best implemented during scheduling
- Ongoing projects to increase capacity of facility

Accepted shifts, situation in March 2024

Instruments	Accepted shifts
ASCII	8
biophysics	2.5
COLLAPS	14
COLLAPS/ISOLTRAP	13
Collections	69
CRIS	107.5
Decay spectroscopy	8
Gandolph	26
HIE ISOLDE	471
IDS	135.5
IDS/ISOLTRAP	6
IDS/TAS	3
ISOLDE upgrade	0
ISOLTRAP	91
LA1/ECSLI	13
Medical physics	6
MIRACLS	17
Multipac	9
SSP	130.5
SSP/TISD	3
TAS	6.5
TISD	107
TISD/Miniball	4
TISD/TDPAC	4
Travelling Setup	19
Travelling Setup; ECSLI	0
VITO	31
WISARD	24

Instruments	Accepted shifts
ISS	164
ISS/Miniball	22
Miniball	187
Prototype	0
XT03	98

Upcoming INTC meetings

Limit scope of upcoming meetings

- Meeting 12-13 November 2024 - Deadline: 2 October 2024 → Call for proposals will be sent out early next week.
 - Low E (+ n_ToF)
- February 2025
 - Only HIE-ISOLDE (+ n_ToF)
 - Low E (addenda and) CLL ok.
- June 2025:
 - n_ToF + ISOLDE winter physics (low E) – TBC
 - CLL ok
- November 2025: cancelled