

Tier1 Report 26/06/2024

Activity for Last Week:

The new host serving the Stratum-0 at RAL is experiencing problems. The issues observed are the same as the ones experienced by Stratum-1 hosts - the host reboots periodically for no clear reason.

This makes the service to be offline for some periods of time, and not fully functional after the reboot.

Both CVMFS Stratum-1 and Stratum-0 offline, with downtimes in GOCDB.

Changes/News for upcoming week

- Batch
- Echo
- Tape
- Grid Services
- Network

Open GGUS tickets <https://tinyurl.com/38u6yms8>

7 of 7 Tickets

Ticket-ID	Type	VO	Site	Priority	Resp. Unit	Status	Last Update	Subject	Scope
167376	other	RAL-LCG2	urgent	NGI_UK	reopened	2024-06-26	RAL CVMFS Stratum 0 reporting ...	EGI	
165280	other	RAL-LCG2	less urgent	NGI_UK ▶ involved	waiting for reply	2024-05-23	Recent file transfer issues at RAL	EGI	
160737	ops	RAL-LCG2	less urgent	NGI_UK	on hold	2024-05-23	[Dashboard] Issues detected at RAL-LCG2	EGI	
165818	none	RAL-LCG2	urgent	NGI_UK	on hold	2024-06-12	ATTENTION - new TOKEN configuration for ...	EGI	
165323	none	RAL-LCG2	less urgent	NGI_UK	on hold	2024-06-12	RAL-LCG2: Enabling tokens on ...	EGI	
167369	cms	RAL-LCG2	urgent	NGI_UK ▶ involved	reopened	2024-06-26	CVMFS stratum-1 server at RAL	WLCG	
165969	cms	RAL-LCG2	urgent	NGI_UK	on hold	2024-06-12	enabling IAM token access to ARC-CEs at ...	WLCG	

Closed GGUS tickets:

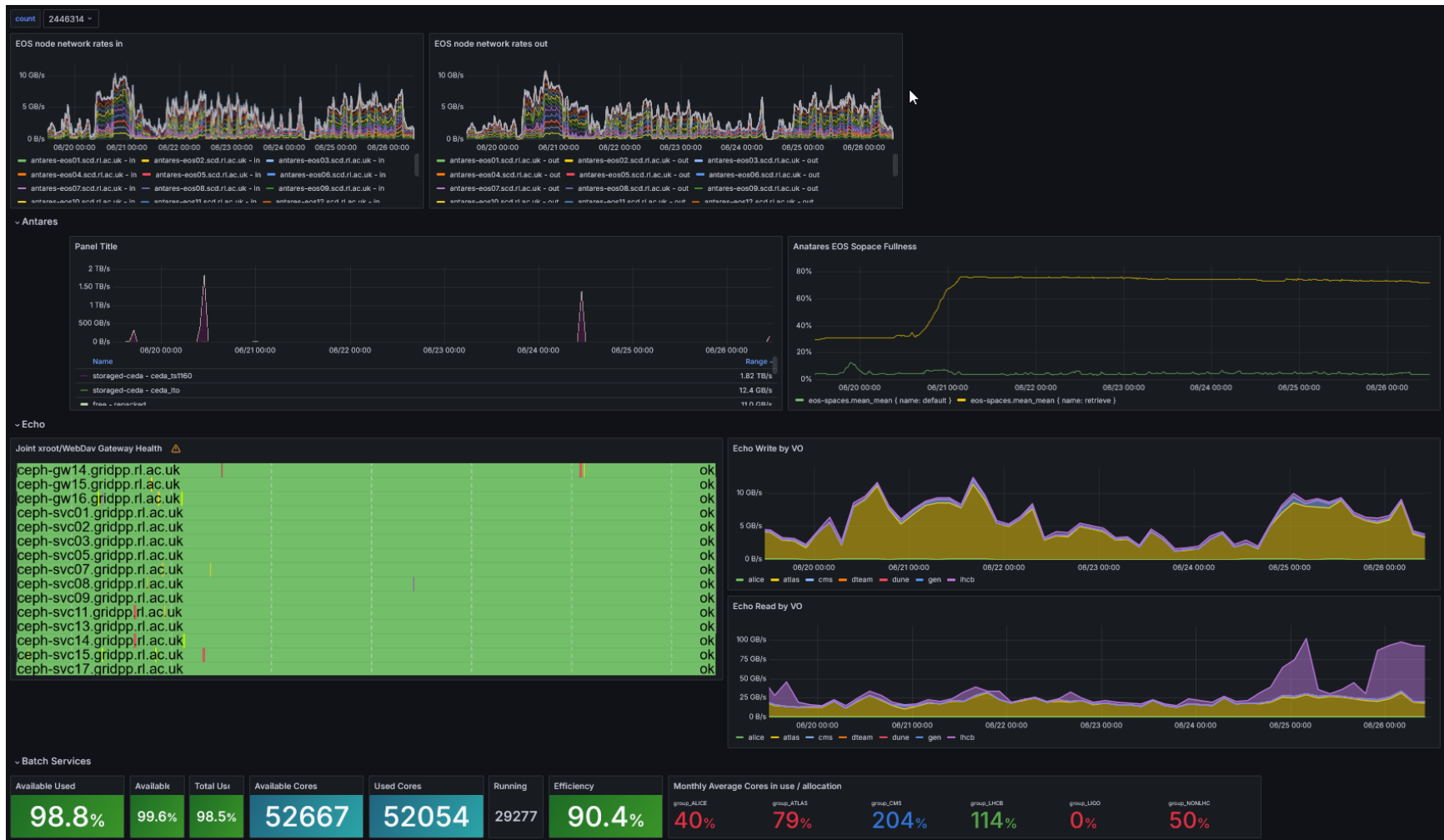
<https://tinyurl.com/mr2x85w8>

6 of 6 Tickets

Ticket-ID	Type	VO	Site	Priority	Resp. Unit	Status	Last Update	Subject	Scope
167378	Team	atlas	RAL-LCG2	urgent	NGI_UK	solved	2024-06-24	Put errors in jobs at RAL	WLCG
167271	ALARM	none	RAL-LCG2	top priority	NGI_UK	solved	2024-06-19	This TEST ALARM has been raised for ...	EGI
167152		cms	RAL-LCG2	less urgent	NGI_UK	solved	2024-06-26	Issues loading data from T1_UK_RAL	WLCG
167143		cms	RAL-LCG2	less urgent	NGI_UK	verified	2024-06-19	Request to resolve FTS unavailability ...	WLCG
167128	Team	lhcb	RAL-LCG2	very urgent	NGI_UK ▶ involved	solved	2024-06-24	Failed uploads to RAL ECHO	WLCG
167117	Team	atlas	RAL-LCG2	very urgent	NGI_UK ▶ involved	verified	2024-06-24	RAL-LCG2: transfer failures as a dest ...	WLCG

New Summary Dashboard in progress.

<https://vande.gridpp.rl.ac.uk/next/d/egvWB4Vz/tier1-vo-service-summary?orgId=1&refresh=1m>



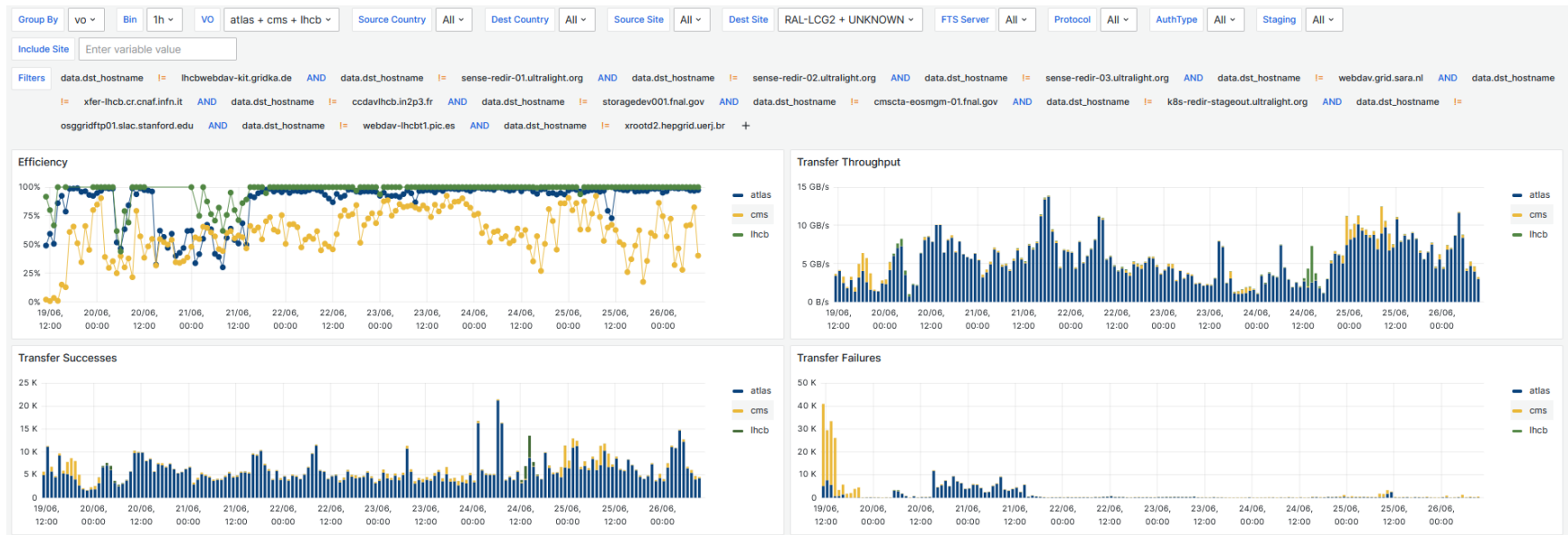
Tape Usage:

https://vande.gridpp.rl.ac.uk/next/d/db7ca8bf-6b53-4ca5-933d-6a63567aa772/asterix-media-supply-pool-usage?orgId=1&var=interval=2m&var-tape_use_interval=7d&from=now-90d&to=now



Transfer Rates

<https://tinyurl.com/FTSingest>



<https://librenms.gridpp.rl.ac.uk/ifttype/type=LHCOPN>

<https://librenms.gridpp.rl.ac.uk/ifttype/type=LHCONE>

CMS: https://cmsst.web.cern.ch/sitereadiness/report.html#T1_UK_RAL

T1_UK_RAL

GGUS Tickets: 165969

Downtimes:

P

D

SAM Status: 100% 100% 74% 77% 77% 54% 58% 86% 81% 66% 87% 74% 100% 100% 100% 86%

Hammer Cloud: 100% 100% 100% 100% 100% 100% 100% 100% 100% 100% 100% 100% 100% 100% 100% 100%

FTS Status: 0% 0% 0% 0% 0% 91% 0% 100% 0% 0% 0% 0% 100% 0% 0% 0%

Site Readiness: 100% 96% 71% 72% 75% 54% 56% 85% 80% 65% 80% 72% 18% 58% 91% 83%

Life Status: [Green grid]

Prod Status: [Green grid with yellow cells at 15, 16, 21, 22, 23]

CRAB Status: [Green grid]

10 11 12 13 14 15 16 17 18 19 20 21 22 23 24 25 26

Jun

https://cmsst.web.cern.ch/siteStatus/detail.html?site=T1_UK_RAL

T1_UK_RAL Site Status Detail (We, 2024-Jun-26 10:39 GMT)

Metric	Prev. Month	Previous Week	Yesterday	UTC Today	Following Week
Downtime(s)					
SAM (1day)					
HC (1day)					
FTS (1day)					
SiteReadiness (1day)					
Life Status					
Life Override					
Prod Status					
Prod Override					
Crab Status					
Crab Override					
GGUS tickets:	[165969]	[167369]			
SAM Status					
Hammer Cloud					
FTS Status					
Site Readiness					
Summary					

ATLAS: <http://hammercloud.cern.ch/hc/app/atlas/siteoverview/?site=RAL-LCG2&startTime=2022-02-16&endTime=2022-02-23&templateType=isGolden>

1184 (functional) -...	1192 (functional) -...	1013 (functional) -...	1272 (functional) -...	1273 (functional) -...
------------------------	------------------------	------------------------	------------------------	------------------------

Template: 1184 (functional) - PFT mc15 Sim_tf 21.0.15 FC

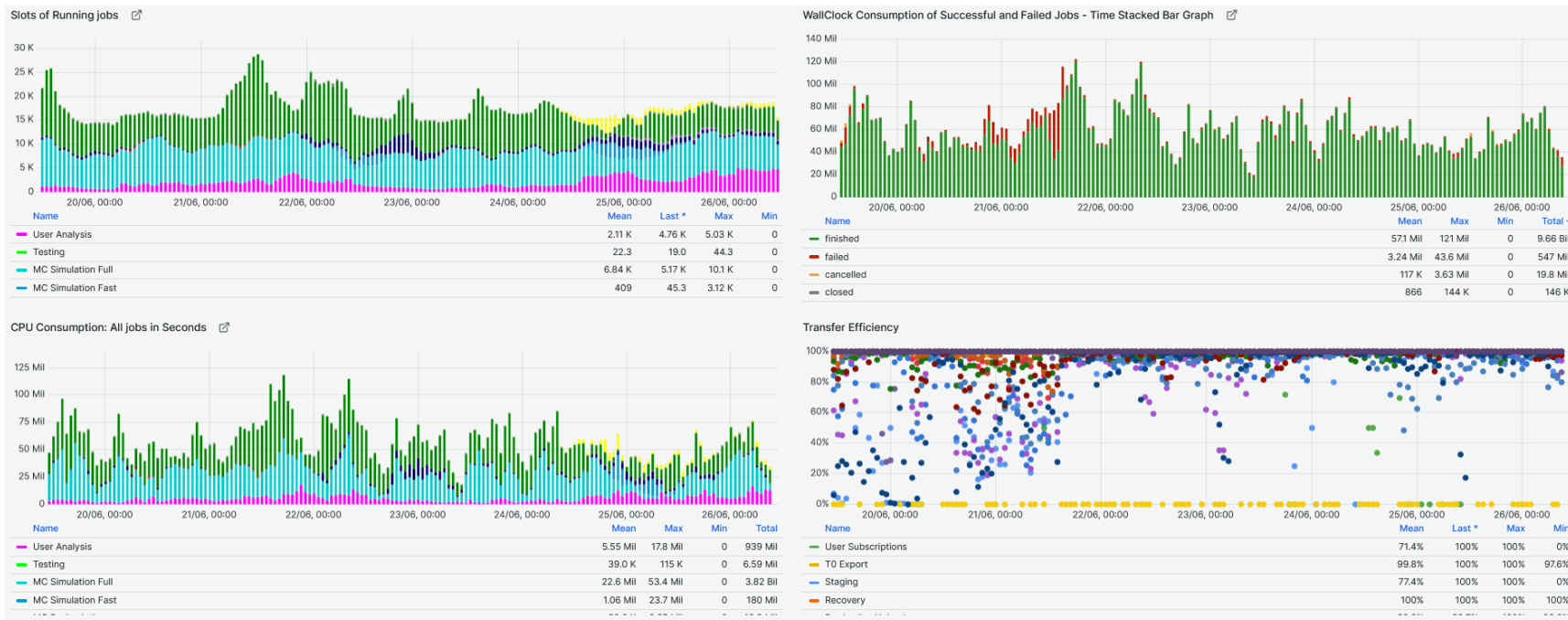
Time	0	1	2	3	4	5	6	7	8	9	10	11	12	13	14	15	16	17	18	19	20	21	22	23	Eff[%]	
26/06/24	c	c	c	c	c	c	c	c	c	c	c	c	c	c	c	c	m	0	0	0	0	0	0	0	0	100
25/06/24	c	c	c	c	c	c	c	c	c	c	c	c	c	c	c	c	c	c	c	c	c	c	c	c	c	100
24/06/24	c	c	c	c	c	c	c	c	c	c	c	c	c	c	c	c	c	c	c	c	c	c	c	c	c	100
23/06/24	c	c	c	c	c	c	c	c	c	c	c	s	c	c	c	c	c	c	c	c	c	c	c	c	c	100
22/06/24	c	c	c	c	c	c	c	c	c	c	c	c	c	c	c	c	c	c	c	c	c	c	c	c	c	100
21/06/24	c	c	c	c	c	f	c	c	c	c	c	c	c	c	c	f	f	m	f	c	c	c	c	c	c	93
20/06/24	c	s	c	c	c	c	c	c	c	c	m	c	c	c	m	c	c	c	c	c	c	c	c	c	c	97
19/06/24	s	m	c	c	c	c	f	c	c	c	c	f	f	c	c	c	c	c	c	c	c	c	c	c	s	93

1184 (functional) -...	1192 (functional) -...	1013 (functional) -...	1272 (functional) -...	1273 (functional) -...
------------------------	------------------------	------------------------	------------------------	------------------------

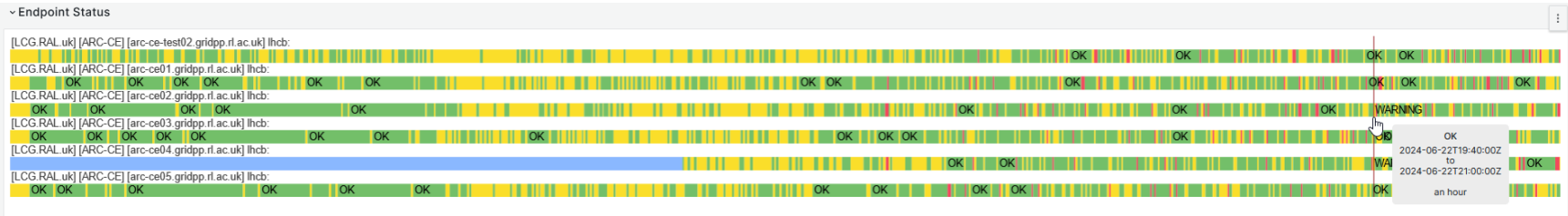
Template: 1013 (functional) - AFT AthDerivation 21.2.33.0

Time	0	1	2	3	4	5	6	7	8	9	10	11	12	13	14	15	16	17	18	19	20	21	22	23	Eff[%]	
26/06/24	c	c	c	c	c	c	c	c	c	c	c	c	c	c	c	c	m	0	0	0	0	0	0	0	0	100
25/06/24	c	c	c	c	c	c	c	c	c	c	c	c	c	c	c	c	c	c	c	c	c	c	c	c	c	100
24/06/24	c	c	c	c	c	c	c	c	c	c	c	c	c	c	c	c	c	c	c	c	c	c	c	c	c	100
23/06/24	c	c	c	c	c	c	c	c	c	c	c	c	c	c	c	c	c	c	c	c	c	c	c	c	c	100
22/06/24	c	c	c	c	c	c	c	c	c	c	c	c	c	c	c	c	c	c	c	c	c	c	c	c	c	100
21/06/24	m	c	c	c	c	c	f	c	c	c	c	c	c	c	c	c	m	m	c	m	c	c	c	c	c	95
20/06/24	c	c	c	c	c	c	c	c	c	c	c	c	c	c	c	c	c	c	c	c	m	s	c	c	c	99
19/06/24	m	f	m	f	c	m	c	c	m	c	m	f	c	m	c	c	c	c	c	c	m	c	c	c	c	90

Site Dashboard: https://monit-grafana.cern.ch/d/D26vEIGGz/site-oriented-dashboard?orgId=17&var-bin=1h&var-groupby_jobs=adactivity&var-groupby_ddm=activity&var-cloud=All&var-country=All&var-federation=All&var-site=RAL-LCG2&var-computingsite=All&var-jobtype=All&var-es_division_factor=1&var-measurement=ddm_transfer_1h



LHCB: https://monit-grafana.cern.ch/d/000000619/wlwg-sitemon-historical-profiles?orgId=20&from=now-30d&to=now&var-vo=lhcb&var-profile=LHCB_CRITICAL&var-dst_tier=1&var-dst_country=UK&var-dst_federation=All&var-dst_experiment_site=LCG.RAL.uk&var-service_flavour=ARC-CE&var-dst_hostname=All&var-recomputation=status



Jobs:

Transfers to RAL:

Transfers from RAL:

ALICE

<https://tinyurl.com/aliceRALstorage>

What is this about?

Disk storage elements																								
RAL																								
SE Name	AliEn SE	AliEn name	Tier	Size	Used	Free	Usage	No. of files	Type	Size	Used	Free	Usage	Version	EOS Version	Functional tests			Last OK add	Last day add tests		Demotion	IPv6	
																add	get	rm	3rd		Successful	Failed	factor	add
1. RAL - CEPH	ALICE::RAL::CEPH	ALICE::RAL::CEPH	1	1.822 PB	1.057 PB	783.8 TB	57.99%	12,940,909	CEPH	1.822 PB	1.086 PB	752.8 TB	59.64%	Xrootd v5.6.9						26.06.2024 12:53	25	0	0	0
2. RAL - CEPH_Test	ALICE::RAL::CEPH_Test	ALICE::RAL::CEPH_Test	1	10 MB	3 B	10 MB	0%	1	CEPH	10 MB	8 KB	9,992 MB	0.078%	Xrootd v5.5.4					26.06.2024 12:34	19	5	22.98%	Test...	
Total				1.822 PB	1.057 PB	783.8 TB		12,940,910		1.822 PB	1.086 PB	752.8 TB				2	2	2	2				1	

What is this about?

Custodial storage elements																								
RAL																								
SE Name	AliEn SE	AliEn name	Tier	Size	Used	Free	Usage	No. of files	Type	Size	Used	Free	Usage	Version	EOS Version	Functional tests			Last OK add	Last day add tests		Demotion	IPv6	
																add	get	rm	3rd		Successful	Failed	factor	add
1. RAL - CTA	ALICE::RAL::CTA	ALICE::RAL::CTA	1	1.841 PB	1.535 PB	313.1 TB	83.39%	666,109	TAPE	-	-	-	-							26.06.2024 12:38	24	0	0.296%	Test...
2. RAL - CTA_TEST	ALICE::RAL::CTA_TEST	ALICE::RAL::CTA_TEST	1	1000 GB	0	1000 GB	-	0	TAPE	-	-	-	-			Test...	Test...	Test...		26.06.2024 11:41	23	1	3.273%	Test...
Total				1.842 PB	1.535 PB	314.1 TB		666,109		0	0	0				1	1	2	1				0	