



Enabling Grids for E-scienceE

Plans for the second year and the longer term

Bob Jones – Project Director - CERN

EGEE-II 1st EU Review (CERN)

15-16 May 2007

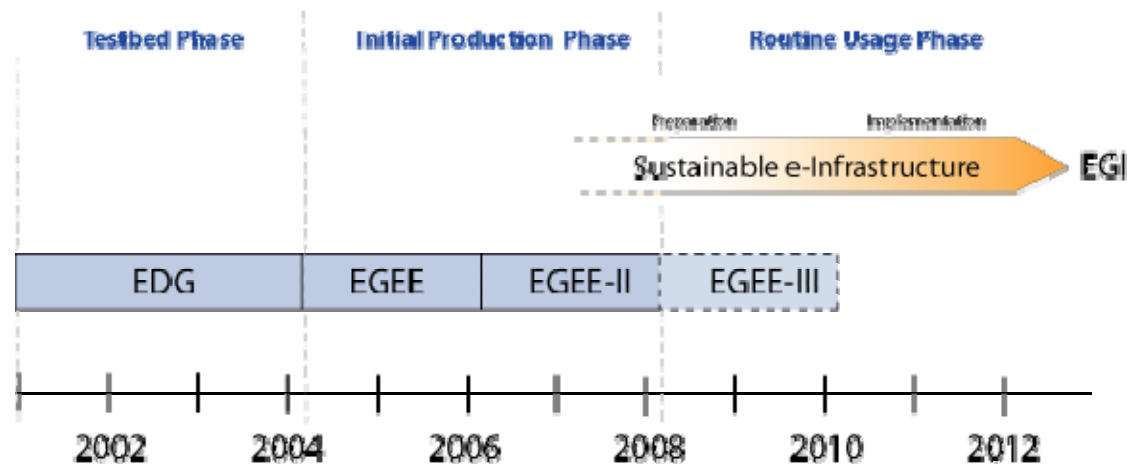
www.eu-egee.org



- **Plans for the second year of EGEE-II**
- **The European Grid Initiative (EGI)**
- **EGEE and EGI**
- **EGEE support for proposed FP7 projects**
- **EGEE in the context of ESFRI**
- **EGEE Schedule**
- **Summary**

- **Continued improvements:**
 - reliability, fault-tolerance, deployability, usability
- **Expand use of federation-based, partner Activity reviews**
- **Maintenance and further development of the gLite distribution**
 - Updated planning taking into account the restructuring work
- **Improvement of availability of good documentation**
- **Expand the Business Associates Programme and sequence of Industry Days**
- **Changes in activity management:**
 - NA2: Hannelore Hammerle; New activity manager: Sarah Purcell
- **Accelerate the planning for a sustainable grid infrastructure**

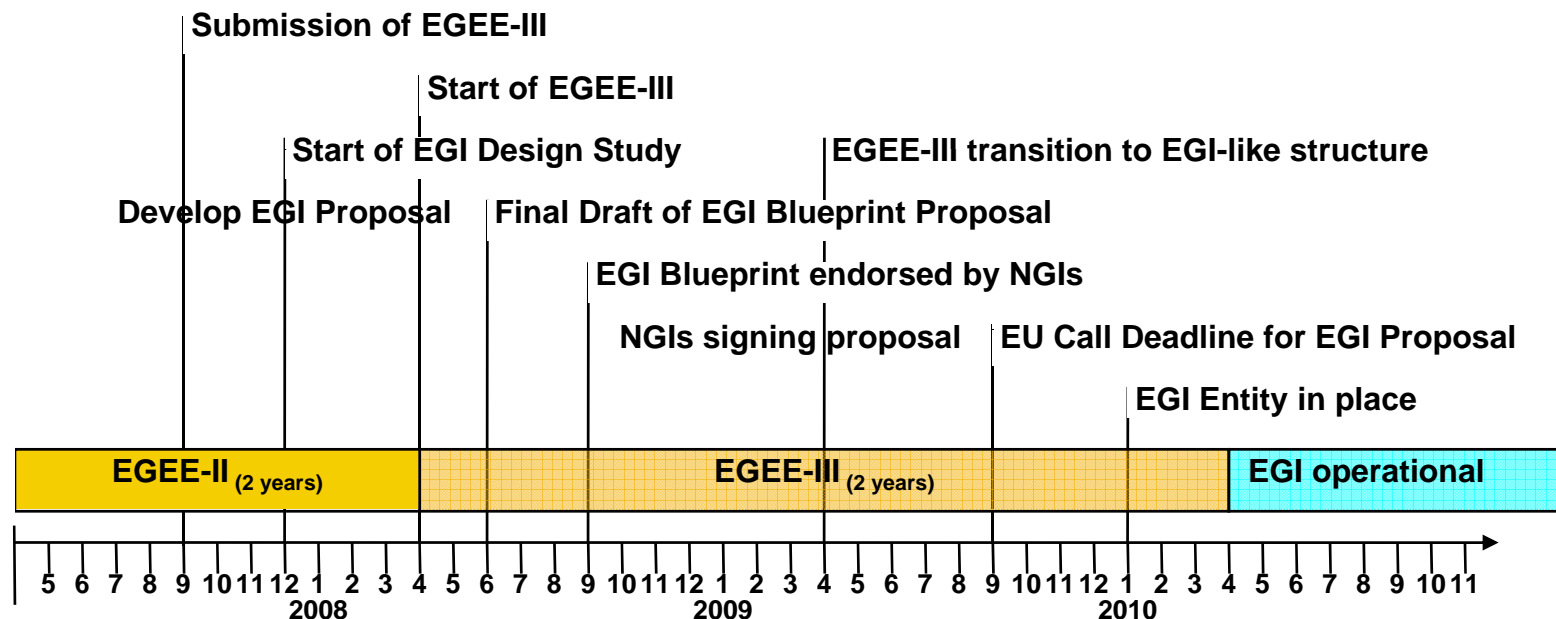
- Need to prepare permanent, common **Grid infrastructure**
- Ensure the long-term sustainability of the European e-infrastructure independent of short project funding cycles
- Coordinate the integration and interaction between National Grid Infrastructures (NGIs)
- Operate the European level of the production Grid infrastructure for a wide range of scientific disciplines to link NGIs

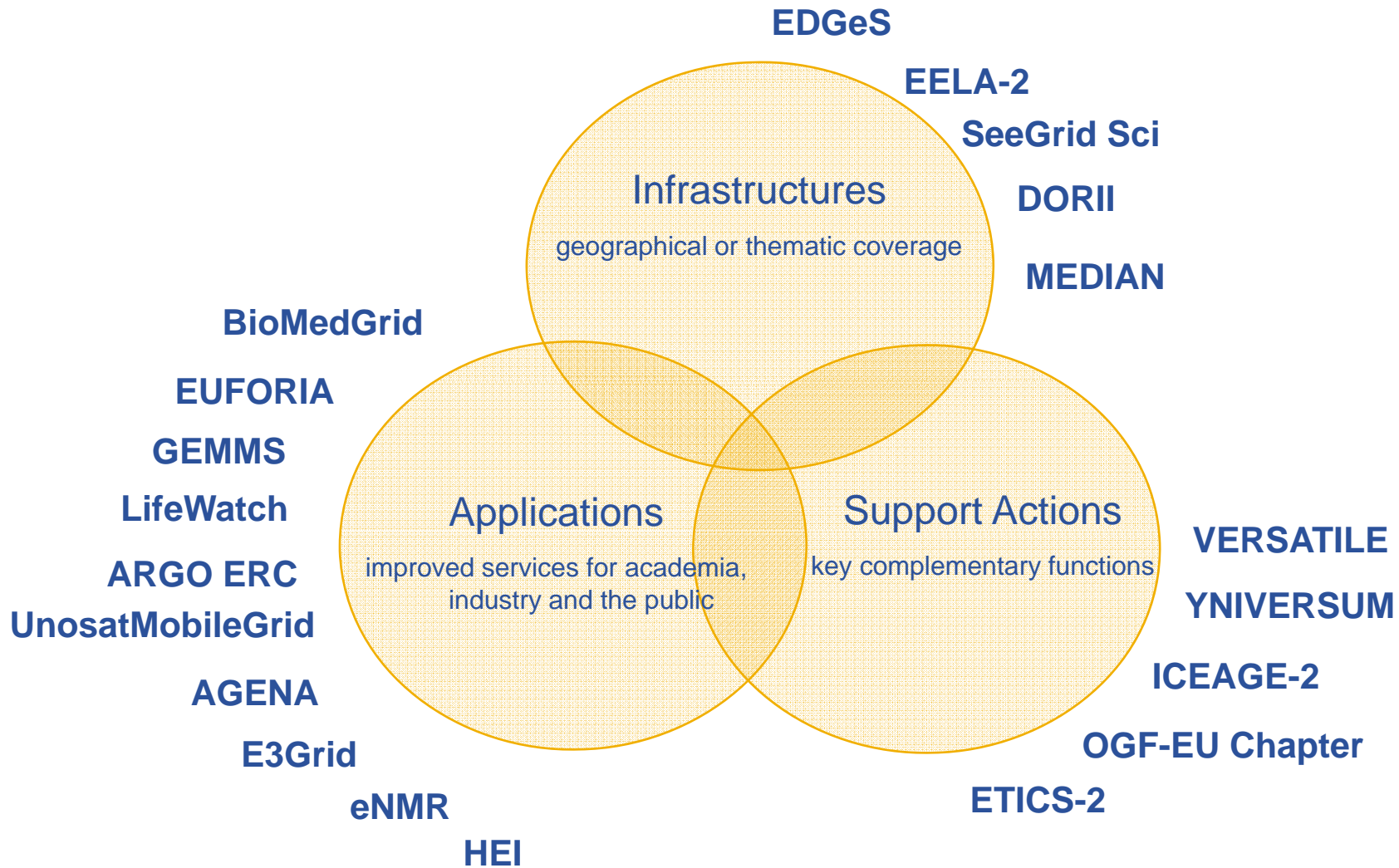




- **EGI Design Study proposal submitted to the European Commission (2 May 2007)**
- **Supported by 31 National Grid Initiatives (NGIs)**
- **2 year project to prepare the setup and operation of a new organizational model of a sustainable pan-European grid infrastructure**
- **Federated model bringing together NGIs to build a European organisation**
- **Well defined, complimentary responsibilities between NGIs and EGI**

- Our intention is to submit a proposal for the 3rd phase of EGEE project to the European Commission in September 2007
 - To run from April 2008 to March 2010
- The main goal of EGEE-III is to enable the *transition to EGI* by evolving the existing technical and organisational structures
 - This will be complex since EGEE-III must in parallel ensure the continuous availability of the production infrastructure to an ever increasing number of diverse user communities





ESFRI roadmap

- ESFRI was asked to develop a truly long term European view on the development of Research Infrastructures of pan-European interest and thus contribute to achieving the knowledge growth as set out in the Lisbon strategy.

ftp://ftp.cordis.europa.eu/pub/esfri/docs/esfri-roadmap-report-26092006_en.pdf

ESFRI

European Strategy Forum on Research Infrastructures

Social Science and Humanities



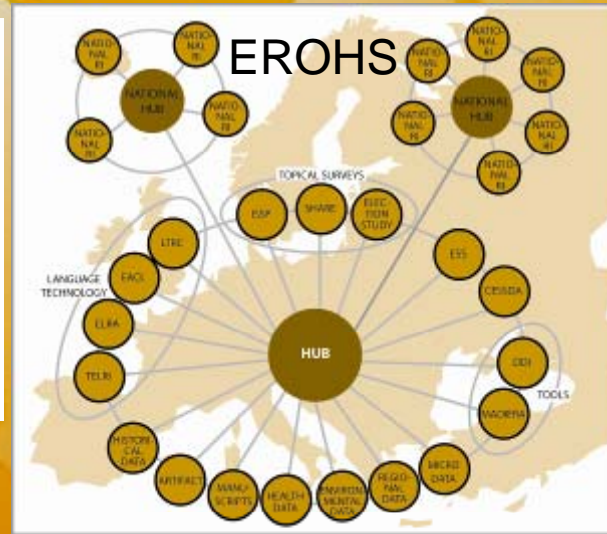
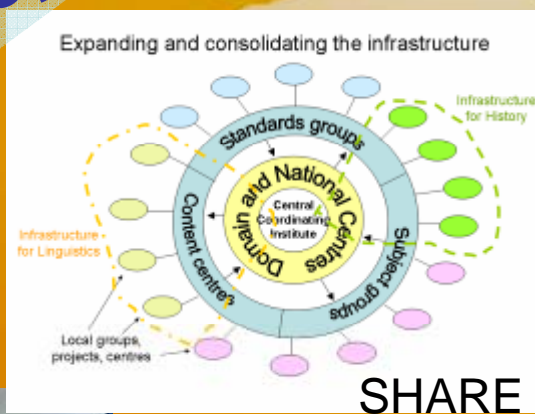
CESSDA

6 Projects

Towards an integrated and interoperable research infrastructure of language resources and its technology enabling eHumanities

Easy access to Language Resources and Technology for the Humanities community

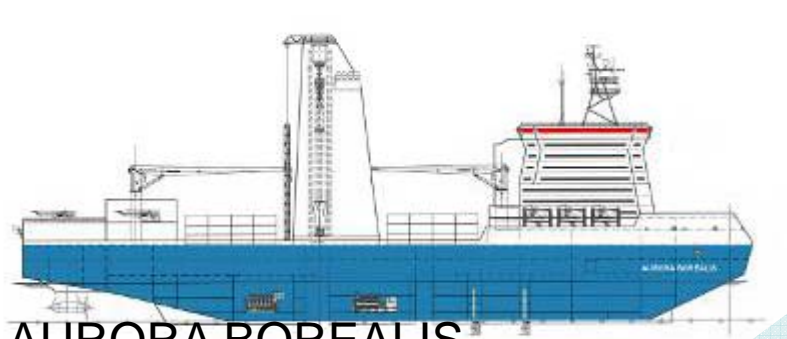
CLARIN



ESFRI

European Strategy Forum
on Research Infrastructures

Environmental Sciences



AURORA BOREALIS



IAGOS-ERI



EUFAR



EURO-ARGO



EMSO

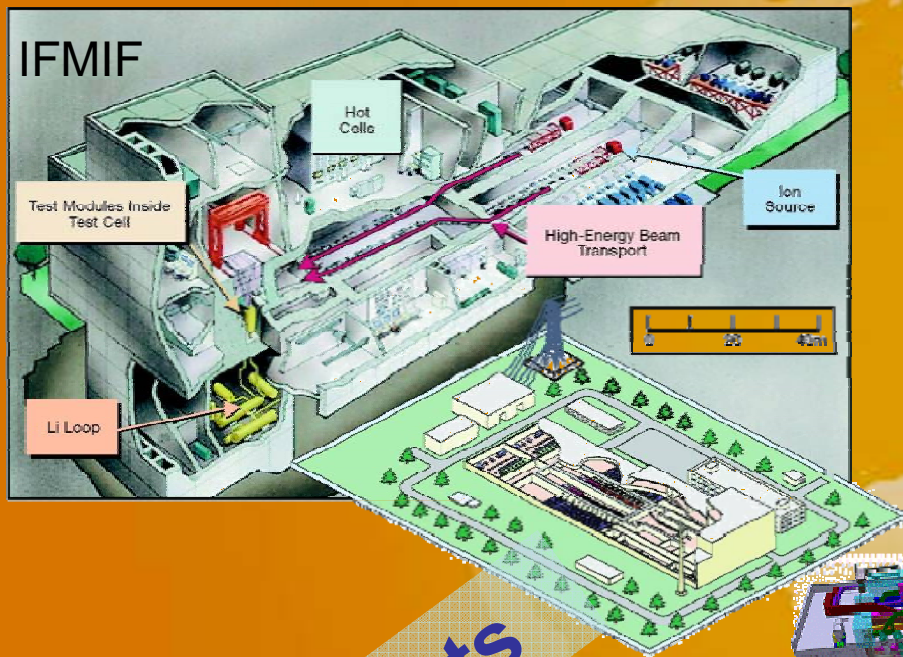


LIFEWATCH

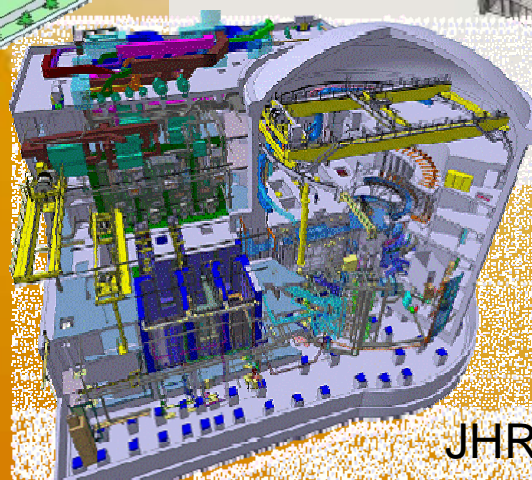
7 Projects



Energy



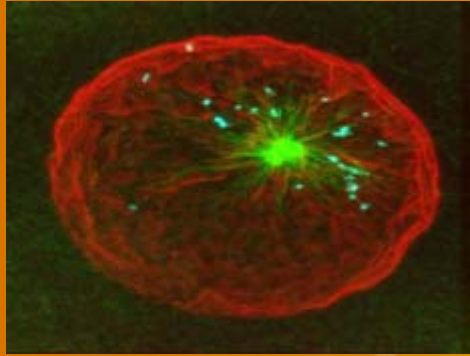
HiPER



JHR

3 Projects

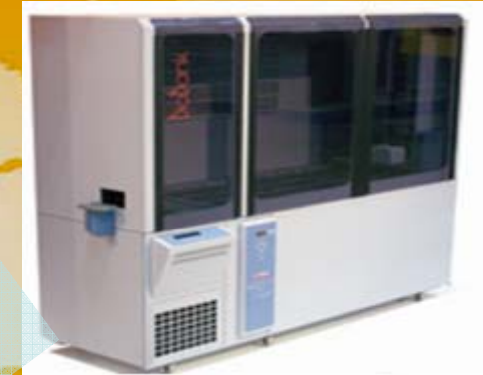
Biomedical & Life Sciences



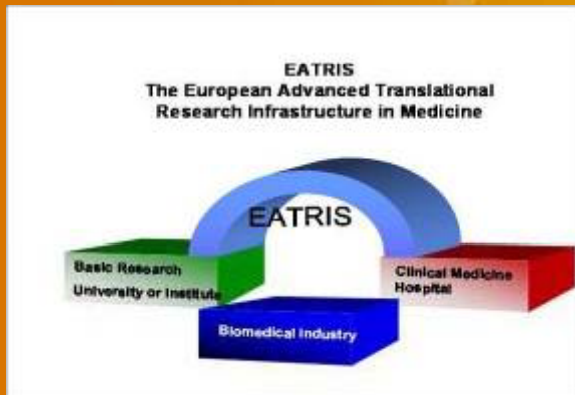
STRUCTURAL BIOLOGY



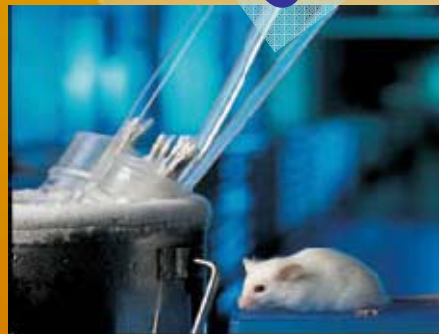
CLINICAL TRIALS



BIOBANKS



EATRIS



INFRAFRONTIER



Upgrade of EBI

6 Projects

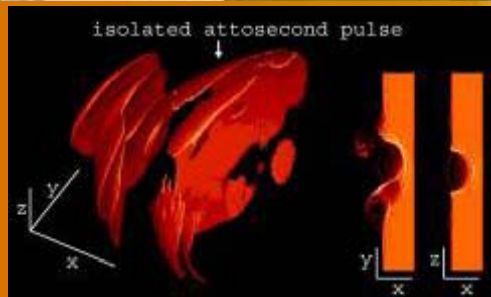
ESFRI

European Strategy Forum
on Research Infrastructures

Material Sciences

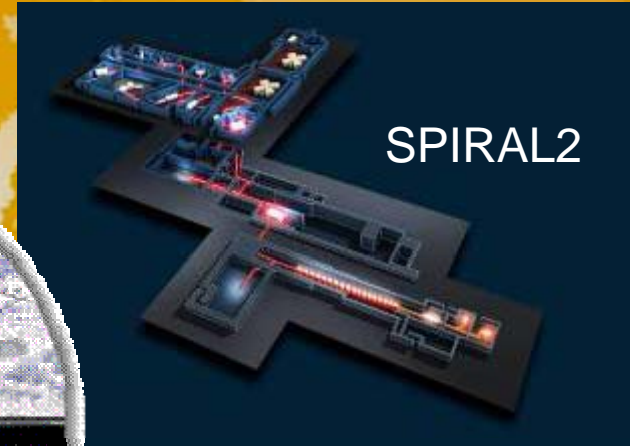
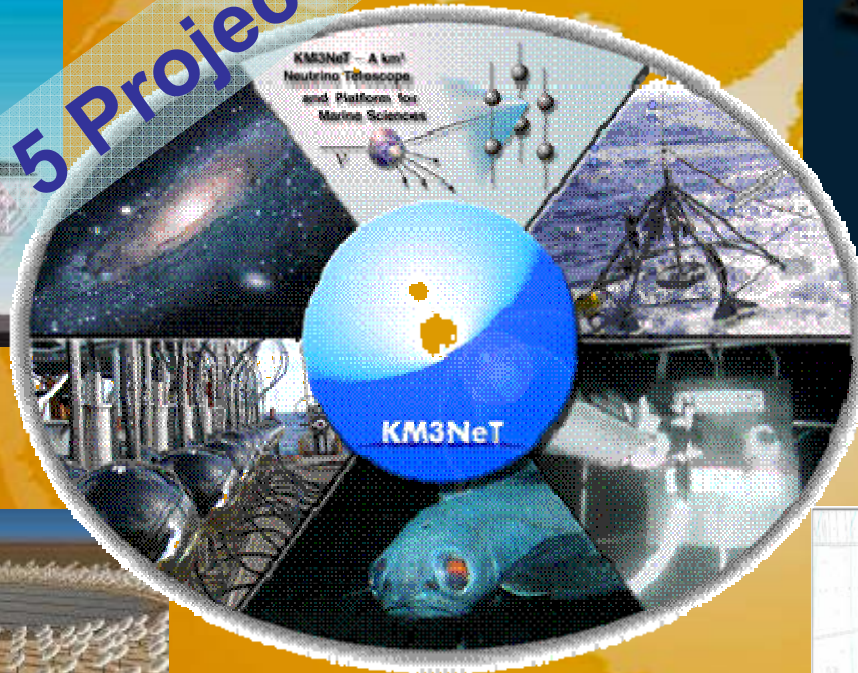


IRUVX

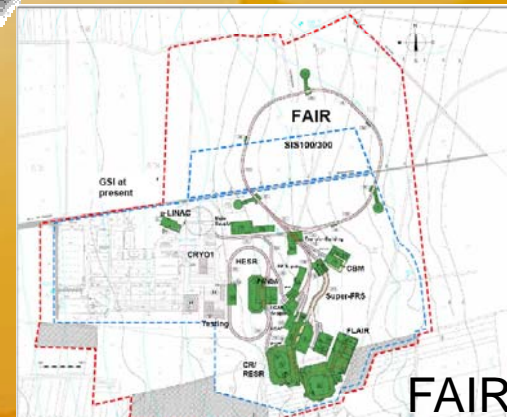


Astronomy, Astrophysics and Nuclear Physics

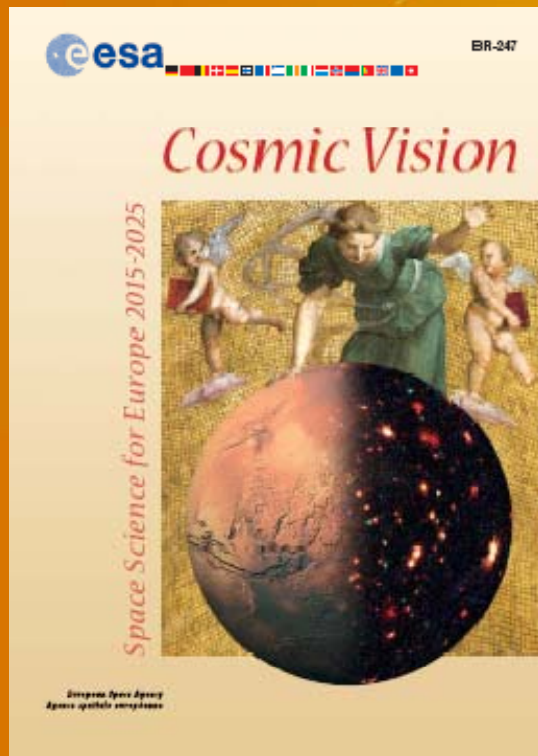
5 Projects



KM3NeT



ESFRI and ESA, CERN: Particles and Space Physics



The ESA Cosmic Vision



The CERN Council
strategy for
particle physics

- **The majority of the ESFRI projects will require a distributed computing infrastructure**
- **The diverse range of user communities supported by EGEE demonstrates that a shared infrastructure for such projects is possible**
- **EGEE will work with ESFRI projects during their design phase to study suitable computing architectures**
 - LIFEWATCH example: EGEE will provide access to the GILDA testbed with associated training and consultancy to allow LIFEWATCH partners to prototype applications
 - Contacts with other ESFRI projects could be established in conjunction with the eIRG



May Apr Mar Feb Jan '08 Dec Nov Oct Sep Aug Jul Jun May

- Final version of periodic report with complete financial data
- All-activity meeting to address this review's recommendations
- EGEE-III project proposal submission
- EGEE07 conference (Budapest)
- Start of approved FP7 projects requesting support from EGEE
 - Proposed start of EGI Design Study project
- User Forum'08
- End of EGEE-II
- Proposed start of EGEE-III project
- Final EGEE-II review

- **EGEE-II has started successfully and has produced important results**
 - All activities are operational
 - Effective management structures are in place to deal with issues
 - Exceeded most of the targets defined for the first year
- **All deliverables have been produced and major milestones met**
- **EGEE is THE largest multi-disciplinary research Grid infrastructure in the world**
- **EGEE has led the way in building a consistent European view of grid infrastructure via a number of related projects and international collaborations**
- **EGEE is the driving force behind preparations for a sustainable grid infrastructure in Europe**
- **The success of a large number of collaborating projects and EGI all depend on EGEE-III**