

MODERNIZING UNIFIED: RESUBMISSIONS & ASSIGNMENT OF WORKFLOWS

IRIS-HEP SUMMER FELLOWSHIP

PRESENTATION BY VOLODYMYR KOVALENKO

TARAS SHEVCHENKO NATIONAL UNIVERSITY OF KYIV



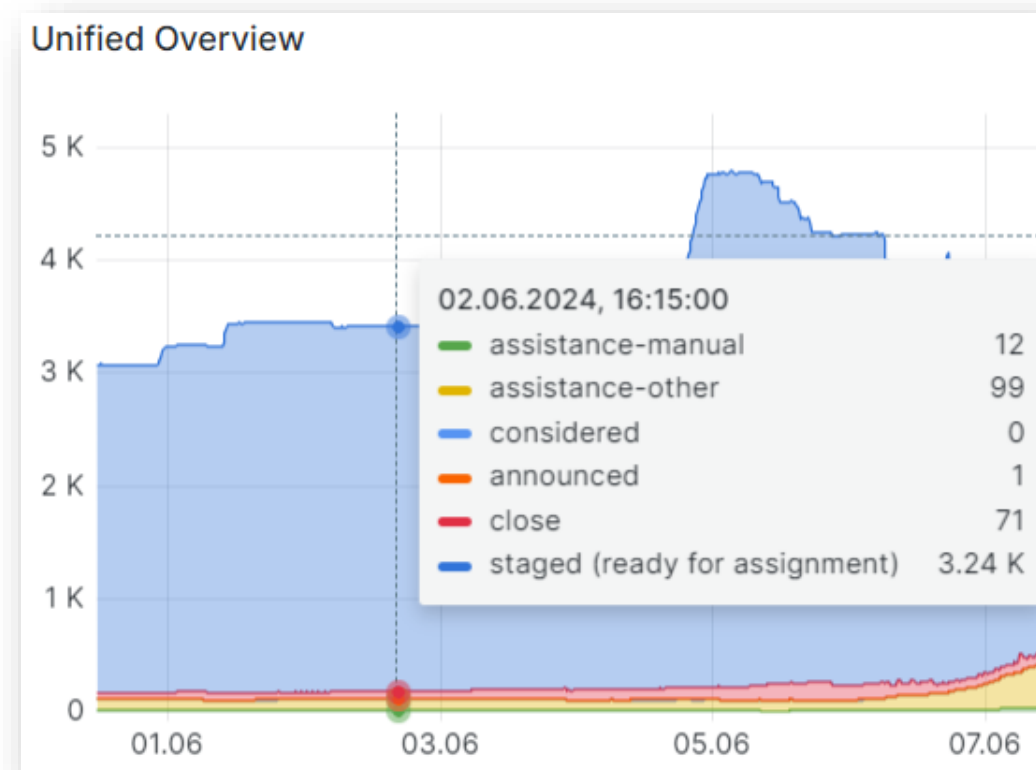
TABLE OF CONTEXT

- P&R Team Role
- About Unified
- Workflow Overview
- Automation
- Modern Dev Practices

P&R TEAM ROLE



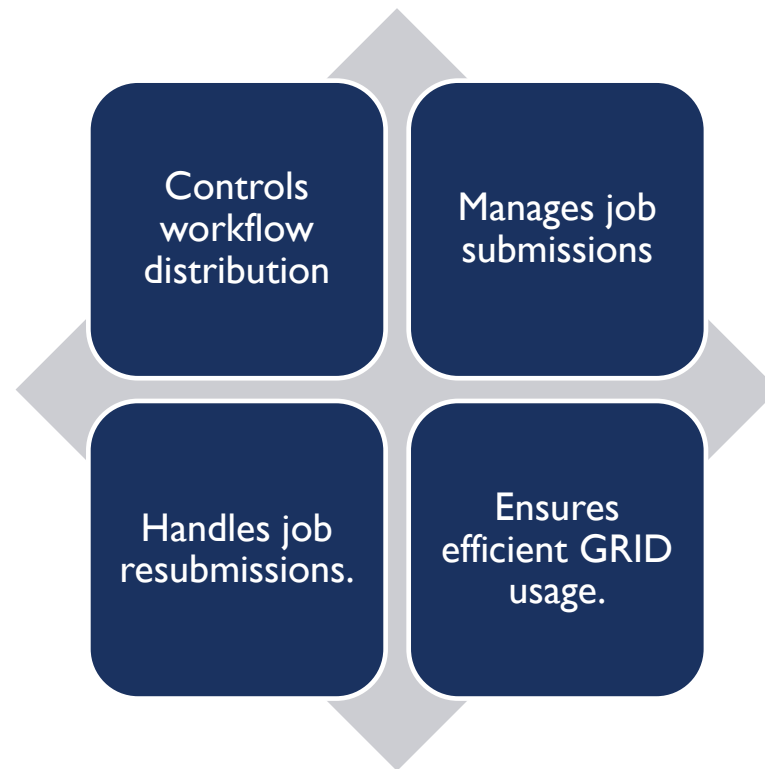
- Manage data processing and reprocessing workflows.
- Ensure efficient job execution and recovery from failures.
- Monitor job performance and troubleshoot issues.
- Optimize resource usage across the GRID.



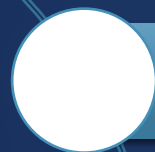
P&R's team dashboard graph example



ABOUT UNIFIED



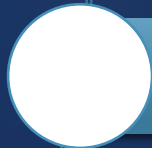
WORKFLOW



Original data



Mini



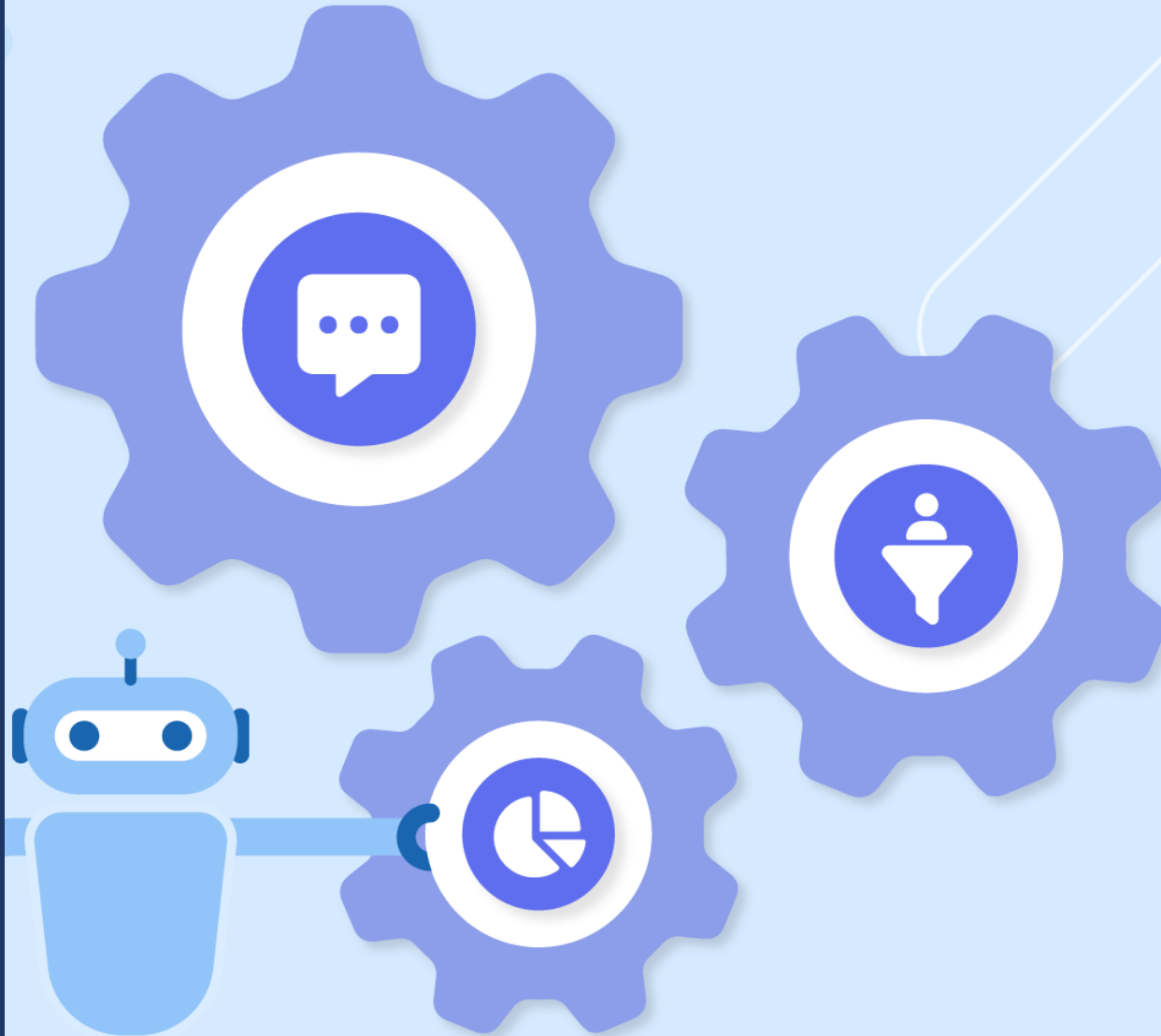
Nano

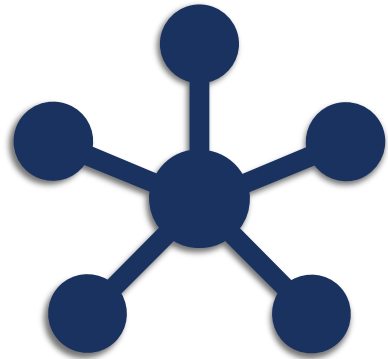


...

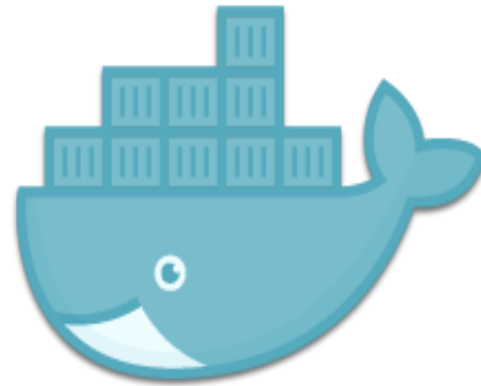
AUTOMATION

- Collect statistics on the parameters that are usually successful for specific error codes
- Develop a tool to automate resubmissions with minimal human intervention
- Implement smart decision-making to select the best resubmission parameters
- Aim to increase the success rate of resubmitted tasks





CI/CD



Docker



Unit Tests

MODERN SOFTWARE DEVELOPMENT PRACTICES

THANK YOU FOR YOUR ATTENTION

VOLODYMYR.KOVALENKO@CERN.CH

