

# GridPP52 collaboration meeting

27<sup>th</sup> to 30<sup>th</sup> Aug 2024, Ambleside, UK

## ATLAS Update

April to Aug 2024

Brij Kishor Jashal, Jyoti Prakash Biswal

Rutherford Appleton Laboratory

(On behalf of ATLAS UK Cloud team)



# Overview:

Absolute time range

From

03/16/2024, 12:00:00 AM

To

08/25/2024, 11:59:59 PM

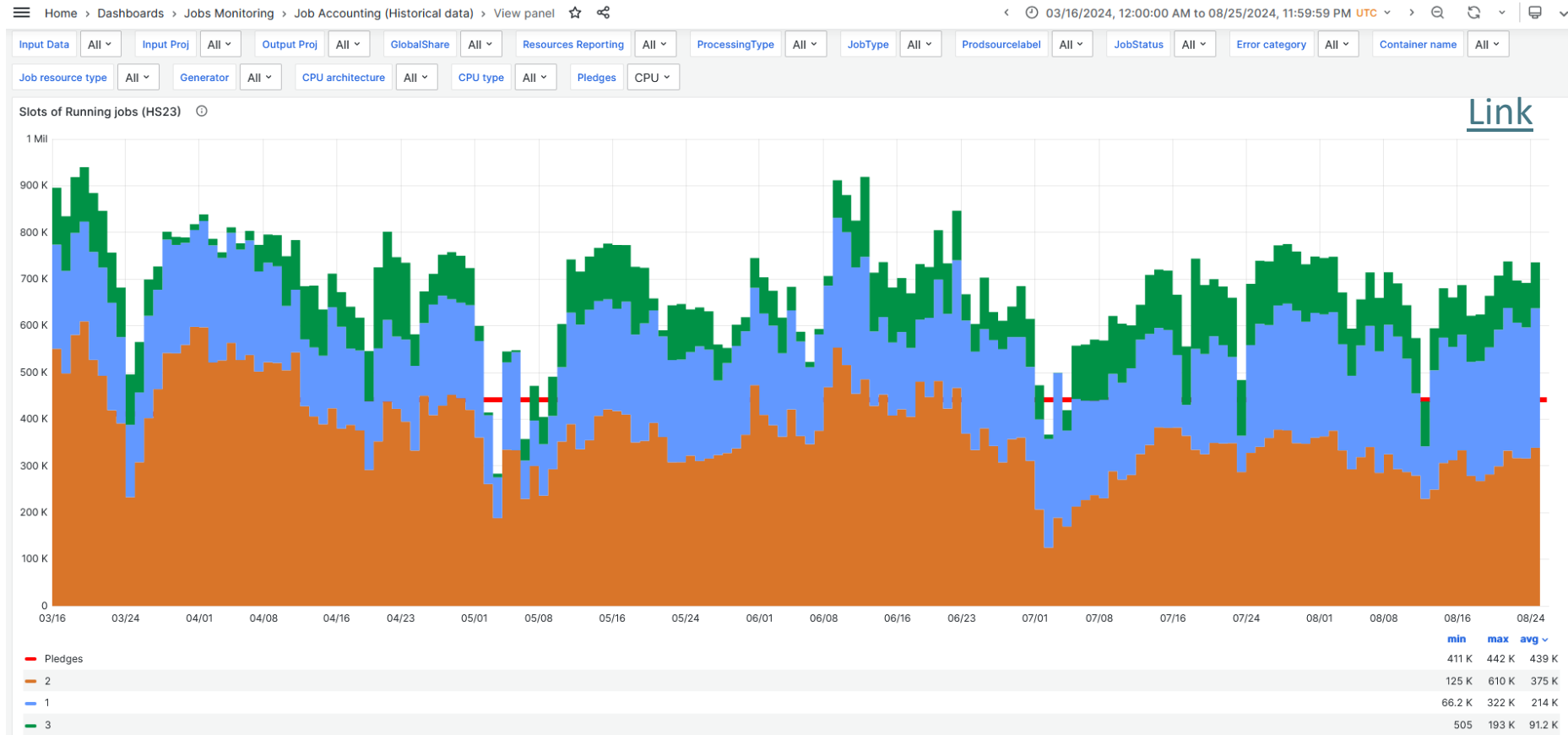
Apply time range

- ATLAS UK Cloud performance since GridPP51 (16<sup>th</sup> Mar to 25<sup>th</sup> Aug 2024)
- Updates from ATLAS UK Cloud sites.
- Updates from ATLAS ADC.

Which woodland critter gallops on the ground like it's late for a very important date?

# Compute: Occupancy vs pledge

## Delivered compute vs pledge at 155%



Tier	Average HS23
Pledge	439K
RAL Tier1	214K
Tier2s	375K
Tier3s	92K
Total	681K

What animal has a long, bushy tail for tree climbing?

# Compute: Occupancy vs pledge

Site (Federation)	Average HS23	Federation pledge HS23
<b>RAL (Tier1)</b>	<b>214K</b>	<b>237K</b>
UKI-LT2-QMUL	73.8K	35.2K
UKI-LT2-RHUL	11.3K	
UKI-LT2-IC-HEP	8.79K	
UKI-LT2-Brunel	5.7K	
UKI-NORTHGRID-MAN-HEP	82.8K	79.2K
UKI-NORTHGRID-LANCS-HEP	59.5K	
UKI-NORTHGRID-SHEF-HEP	14.3K	
UKI-NORTHGRID-LIV-HEP	10.8K	
UKI-SOUTHGRID-OX-HEP	40.9k	24.4k
UKI-SOUTHGRID-BHAM-HEP	8.96k	
UKI-SOUTHGRID-RALPP	5.70k	
UKI-SOUTHGRID-SUSX	3.52k	
UKI-SCOTGRID-DURHAM	73k	62.7k
UKI-SCOTGRID-GLASGOW	55.1k	
UKI-SCOTGRID-ECDF	10.2k	

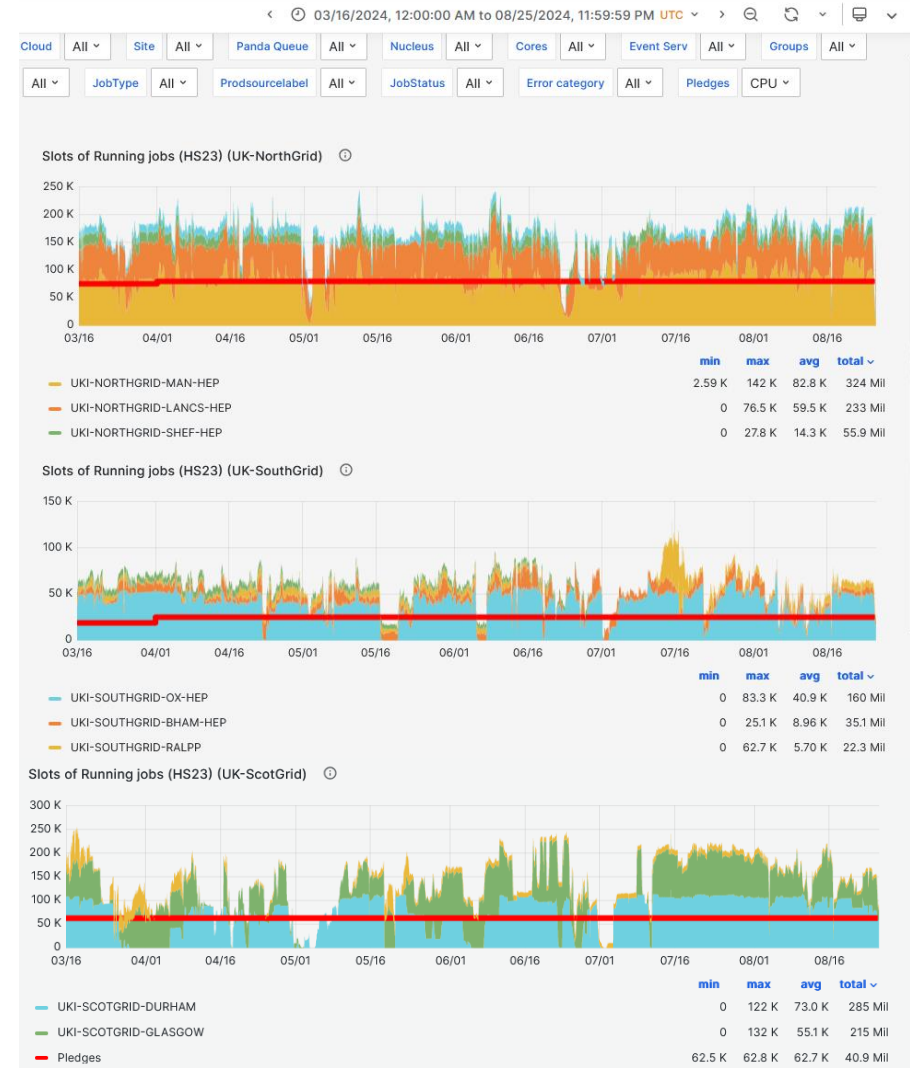
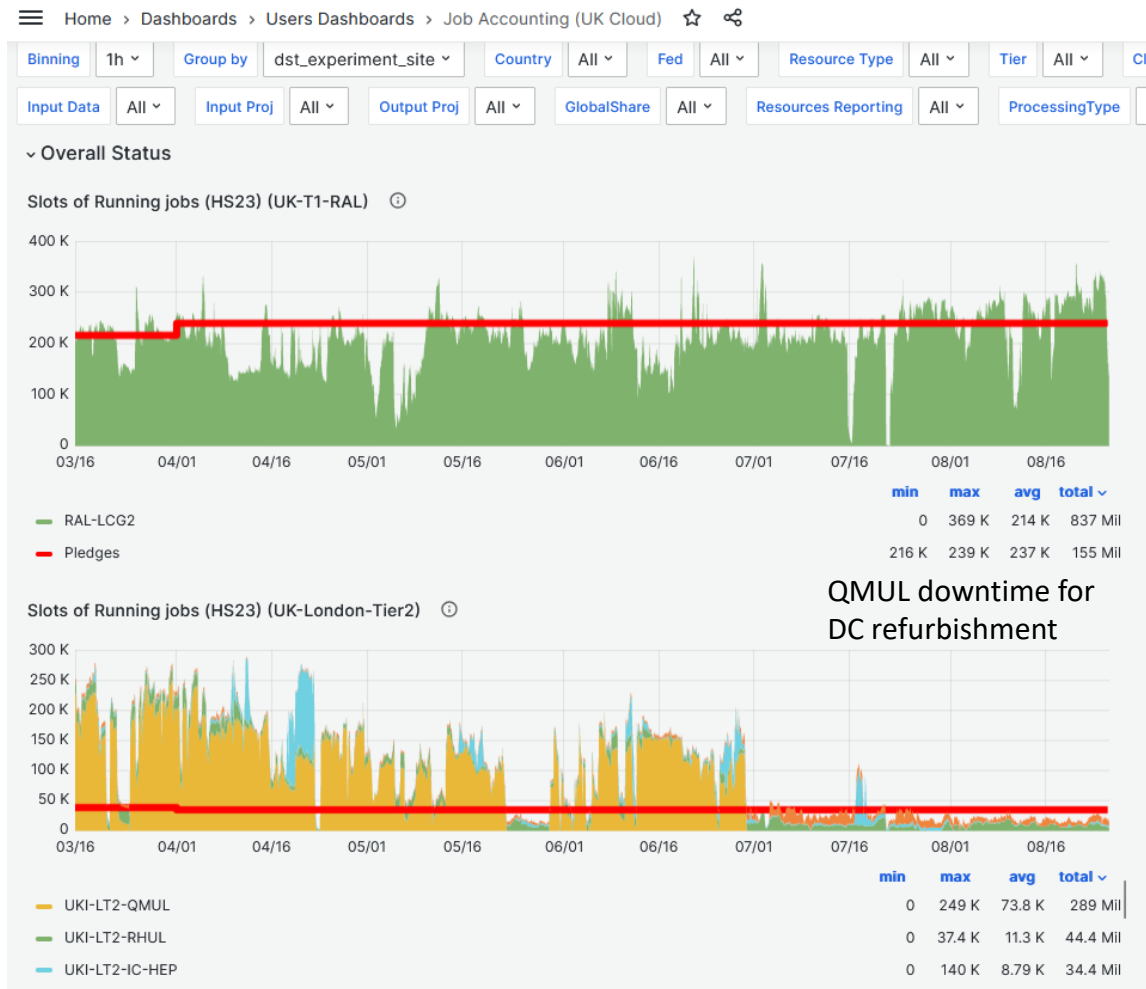
## RAL Tier1:

- Majority of ATLAS workloads are multicore.
- Changes in scheduling policy to favour Multicore jobs have shown increased occupancy of ATLAS jobs during last month.
- Expected to overdeliver in the next quarter.
- Details in [Tom's talk](#) from yesterday.

Which little predator loves to catch mice and birds?

# Compute: Occupancy vs pledge

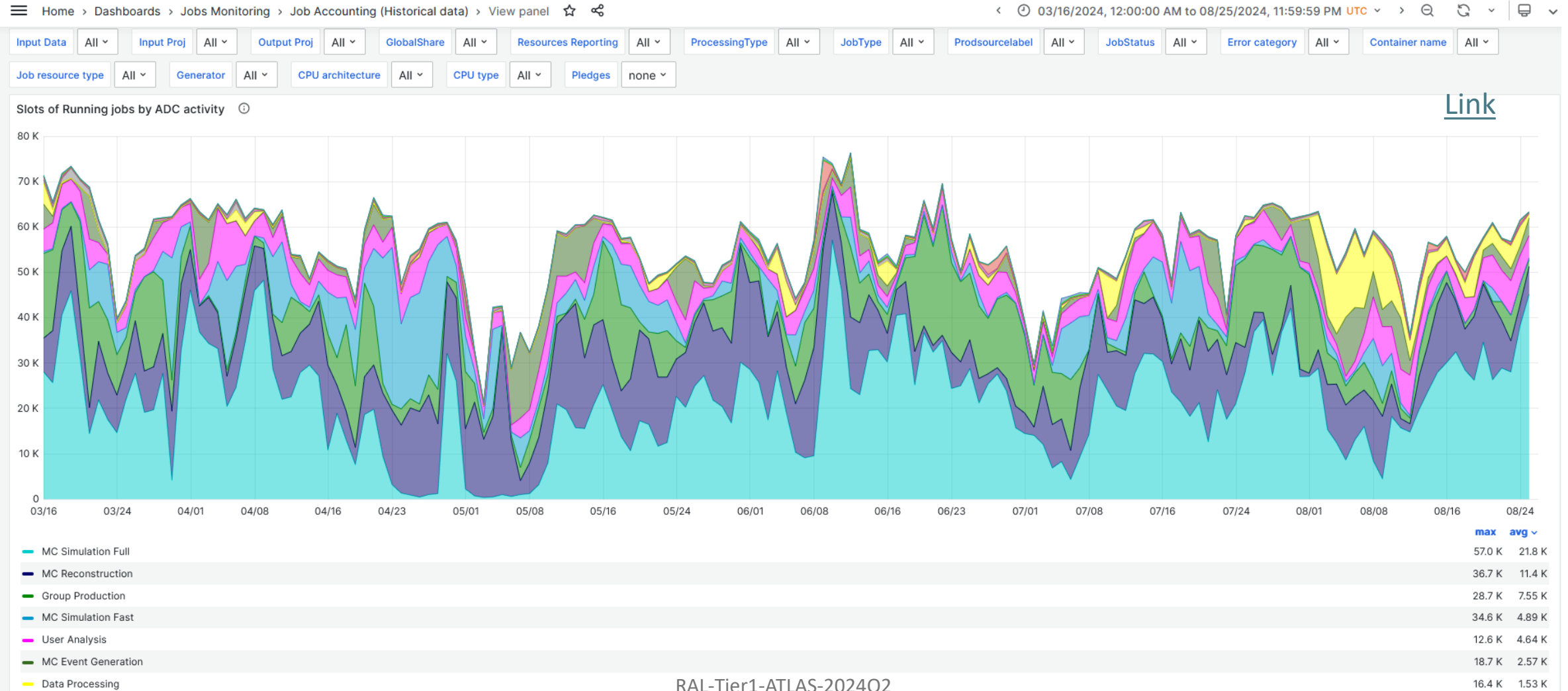
## UK Cloud regions



# Compute: workload type

Slots of running jobs by ADC activity: Dominated by MC

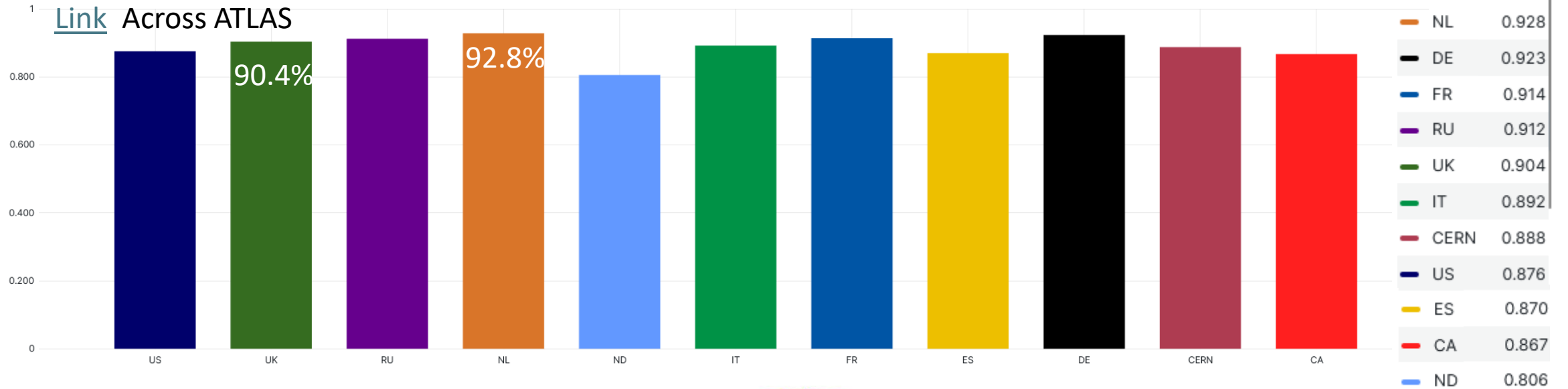
What nimble creature can jump between trees at night?



# Compute: Efficiency

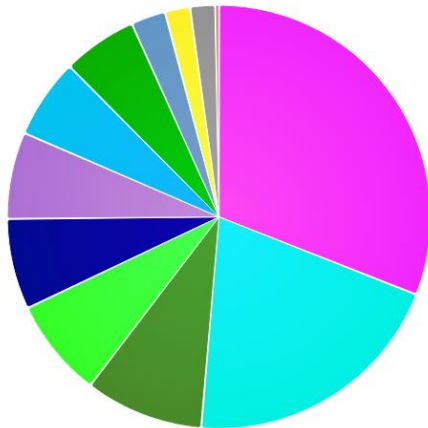
Across ATLAS: Average CPU efficiency of good jobs for various job types

Average CPU Efficiency Good jobs



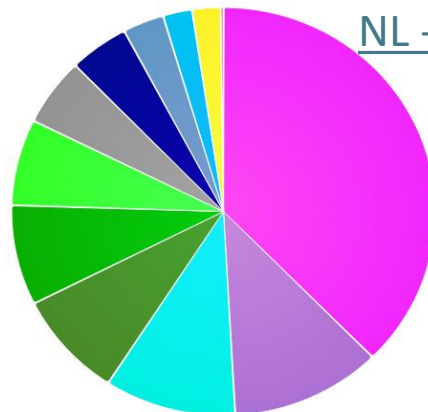
[Link](#) - UK

	Value	Percent
User Analysis	5.54 Mil	31%
MC Simulation Full	3.64 Mil	20%
MC Event Generator	1.61 Mil	9%
Testing	1.34 Mil	8%
MC Reconstruction	1.23 Mil	7%
MC Merge	1.18 Mil	7%
MC Simulation Fast	1.08 Mil	6%
Group Production	1.01 Mil	6%
Event Index	460 K	3%
Data Processing	330 K	2%



[Link](#) - NL

	Value	Percent
User Analysis	1.02 Mil	38%
MC Merge	310 K	12%
MC Simulation Full	270 K	10%
MC Event Generation	226 K	8%
Group Production	213 K	8%
Testing	183 K	7%
Group Analysis	143 K	5%
MC Reconstruction	121 K	5%
Event Index	83.3 K	3%
MC Simulation Fast	58.1 K	2%

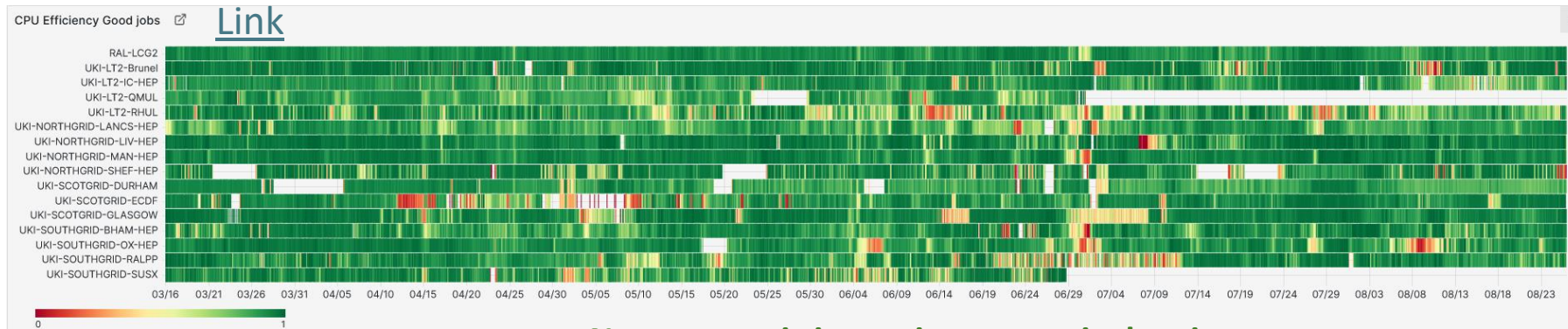
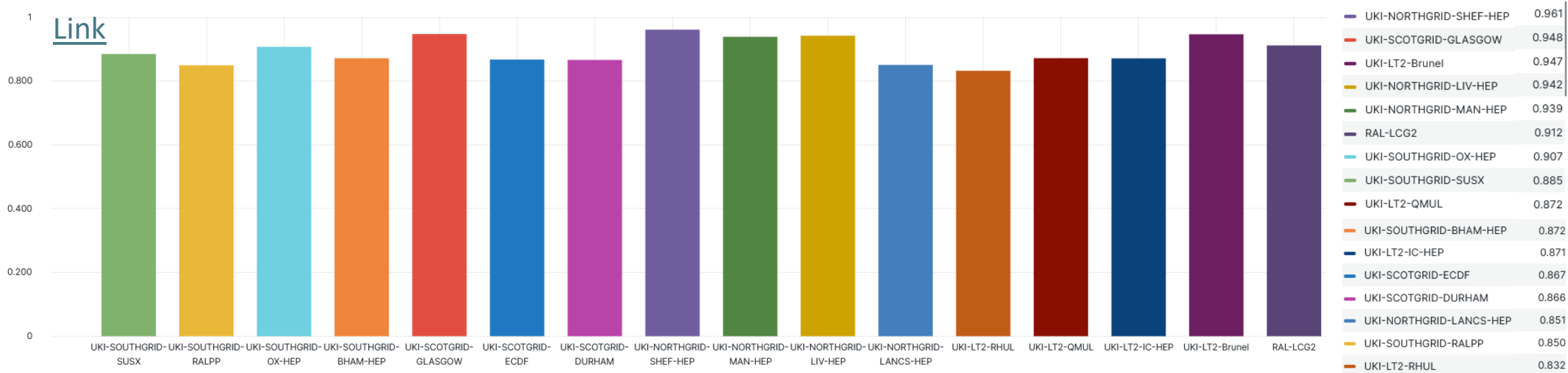


- Only marginal difference with top performers in the chat
- Difference not due to types of workflow allocation

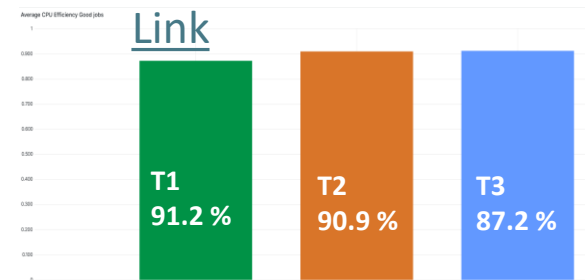
# Compute: Efficiency

Who likes to sleep in hollow trees or old bird nests?

Average CPU Efficiency Good jobs



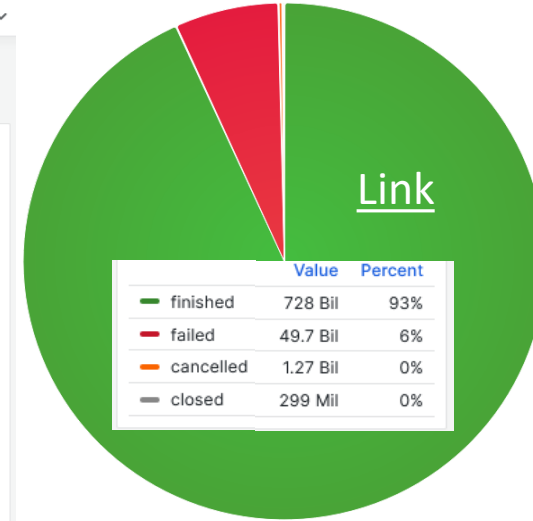
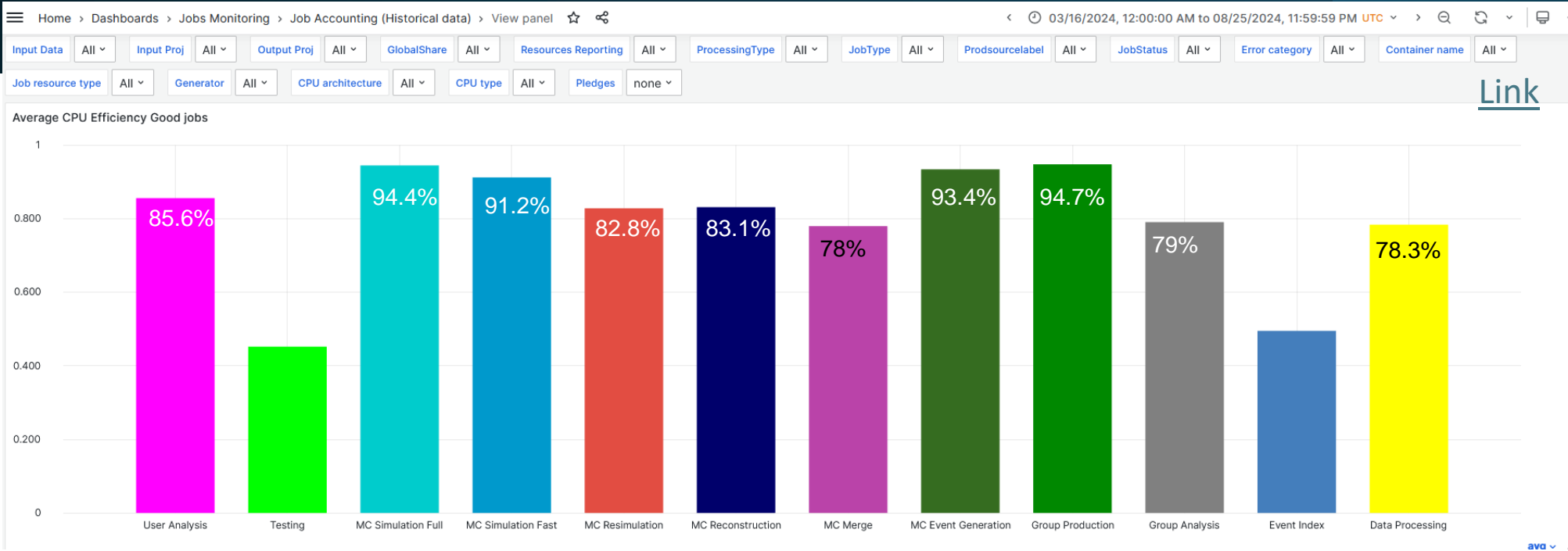
No systematic issues in any particular site





# Compute: Efficiency

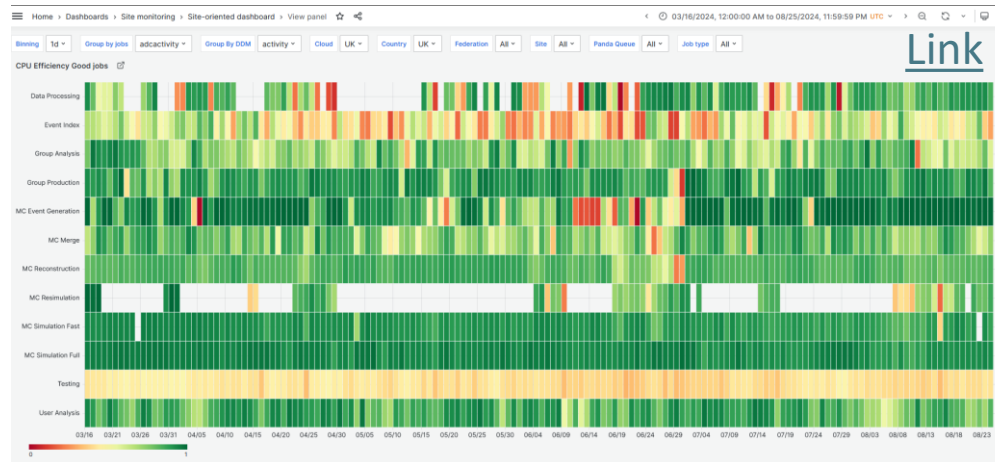
Average CPU efficiency of good jobs for various job types.



- *At 6%, Failure rate is below the global average ATLAS failures of 7%*
- *For RAL Tier1 its 4%*

Some workflows are more efficient than others

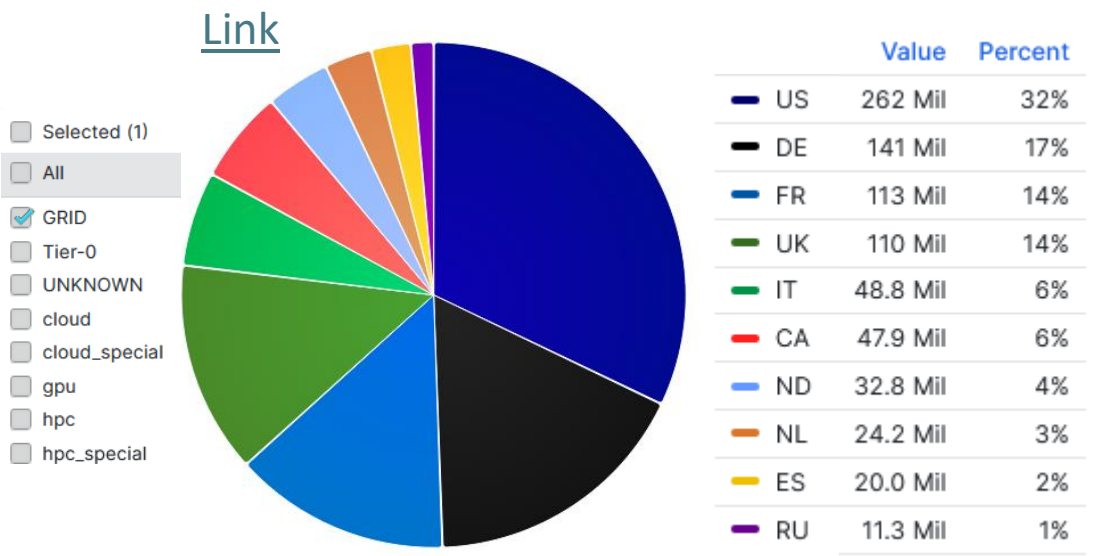
What small mammal can roam 20 miles in a single night?



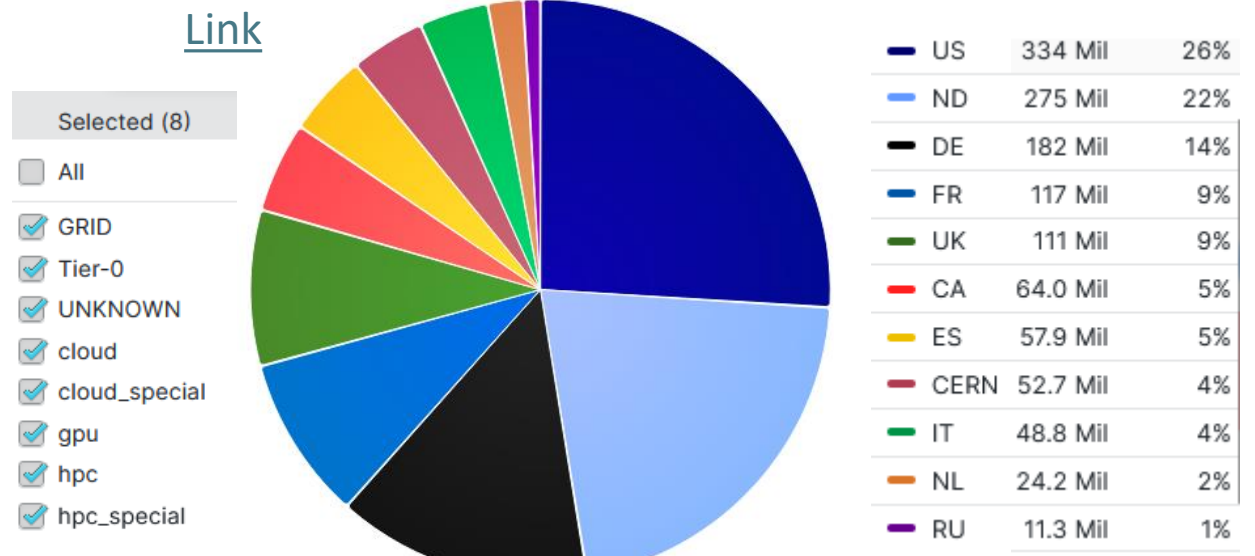
# ATLAS Compute: resource types

Significant (37%) non-grid compute resources in ATLAS

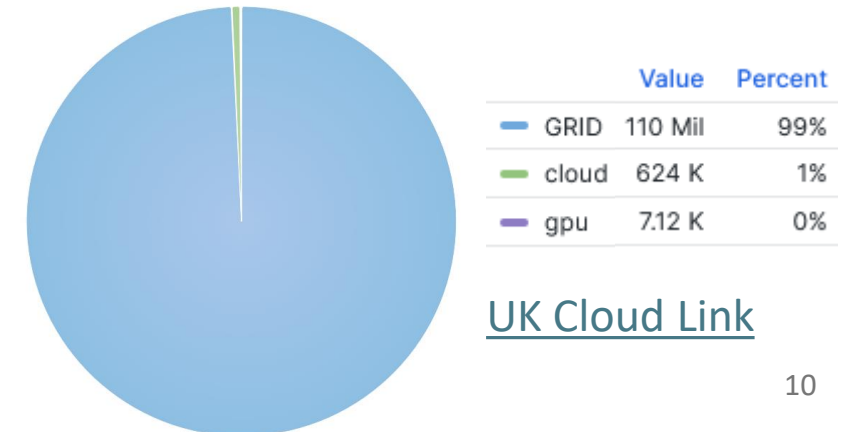
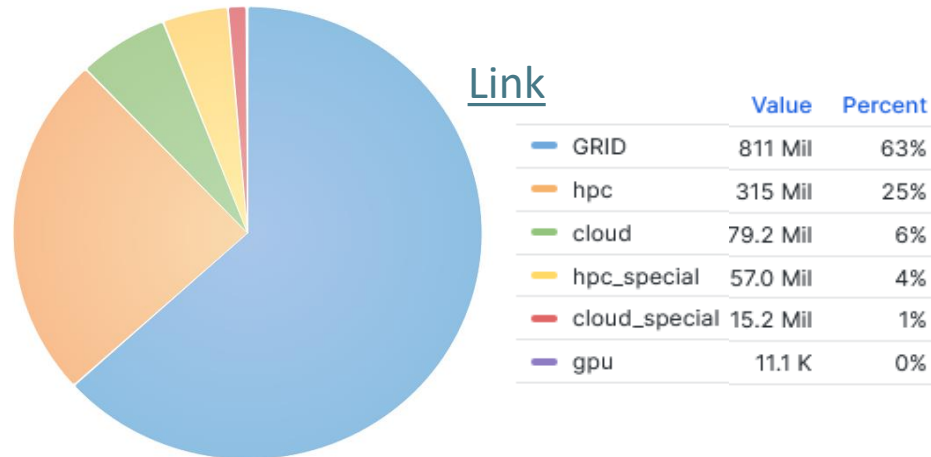
Which forest critter acts like a bouncer, keeping gray squirrels in check so red squirrels can thrive?



Slots of running jobs HS23



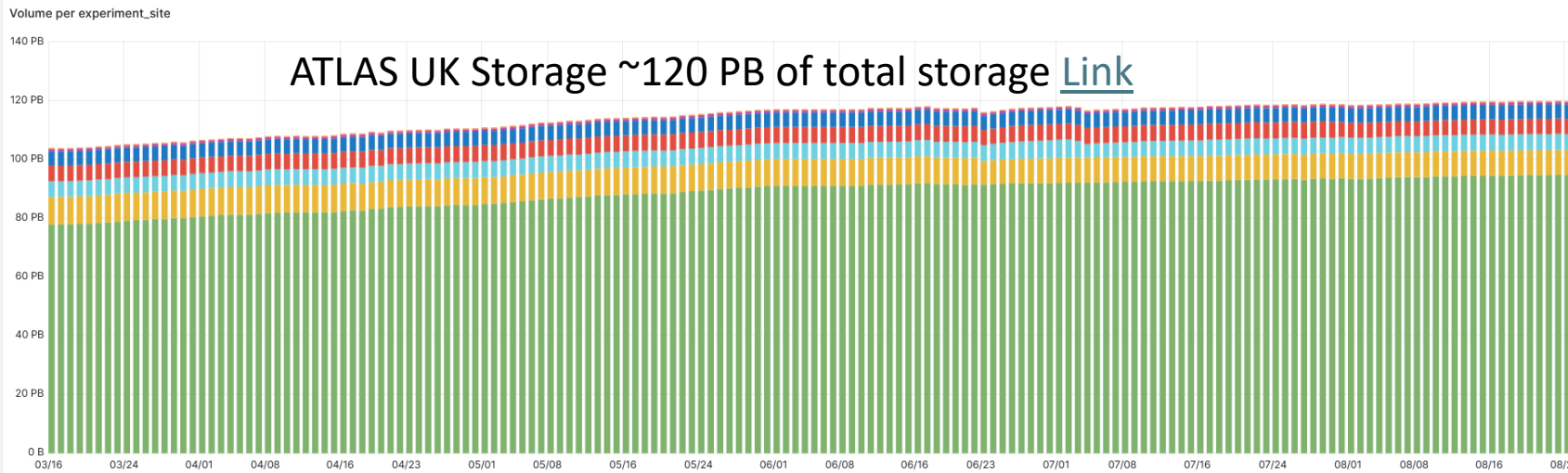
Slots of running jobs HS23



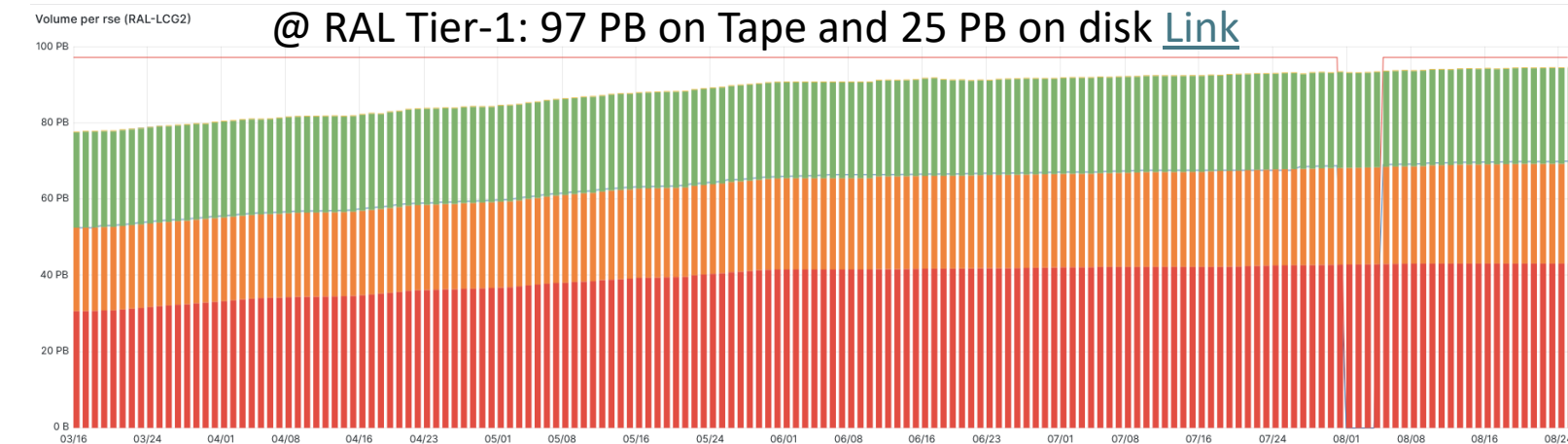
# Storage:

Who's the not-so-picky eater that munches on everything from berries to birds?

ATLAS total data breached one exabytes mark in rucio: at 120 PB, UK is at ~12% of total.



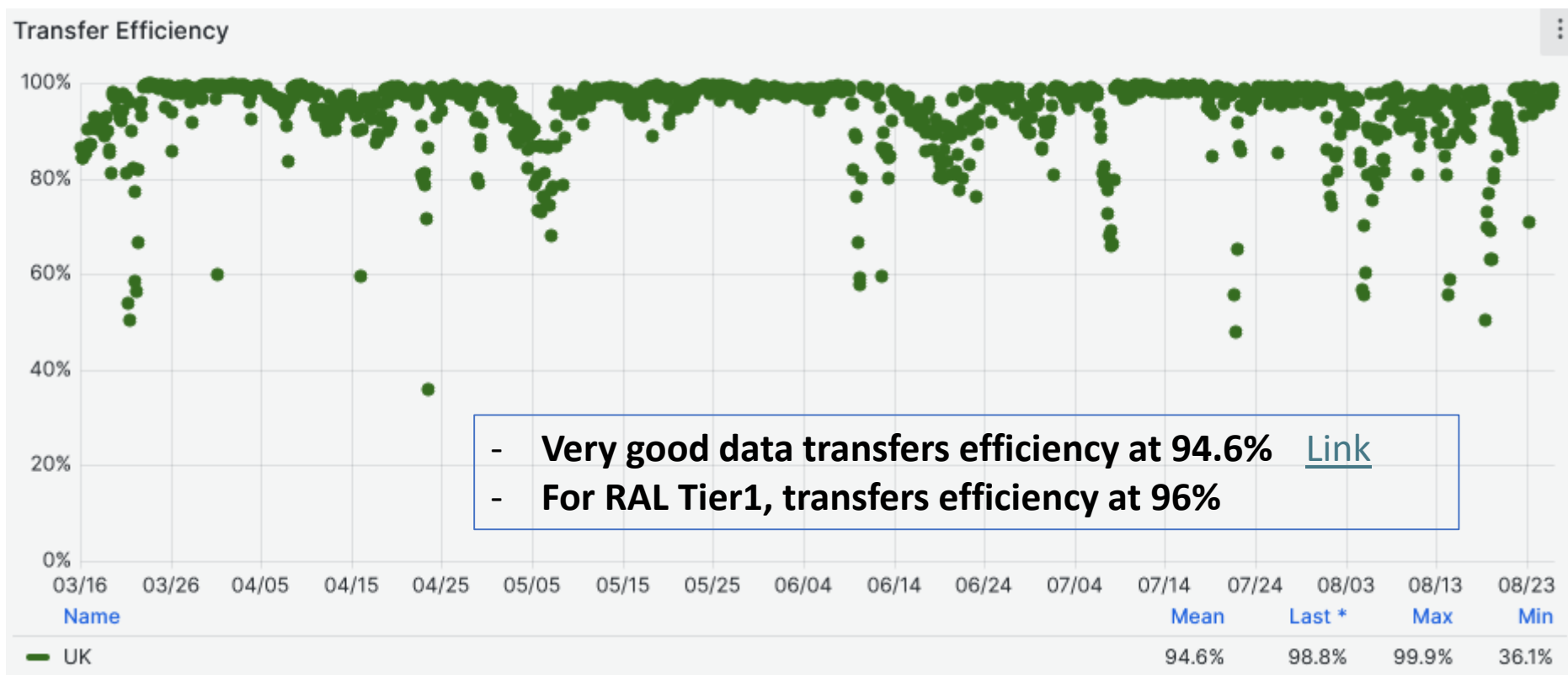
	min	max	avg	current
RAL-LCG2	77.7 PB	94.6 PB	88.5 PB	94.6 PB
UKI-LT2-QMUL	8.08 PB	9.54 PB	8.92 PB	8.51 PB
UKI-NORTHGRID-LANCS-HEP	4.59 PB	6.16 PB	5.39 PB	5.40 PB
UKI-NORTHGRID-MAN-HEP	4.97 PB	5.51 PB	5.38 PB	5.18 PB
UKI-SCOTGRID-GLASGOW	4.81 PB	4.98 PB	4.87 PB	4.88 PB
UKI-SOUTHGRID-RALPP	616 TB	788 TB	718 TB	727 TB
UKI-NORTHGRID-LIV-HEP	327 TB	434 TB	394 TB	426 TB



	min	max	avg	current
Storage total	0 B	97.1 PB	94.7 PB	97.1 PB
Storage used	0 B	69.9 PB	61.9 PB	69.9 PB
RAL-LCG2_MCTAPE	30.6 PB	43.1 PB	39.4 PB	43.1 PB
RAL-LCG2_DATATAPE	21.8 PB	26.3 PB	23.8 PB	26.3 PB
RAL-LCG2-ECHO_DATADISK	24.8 PB	25.6 PB	25.1 PB	25.1 PB
RAL-LCG2-ECHO_SCRATCHDISK	189 TB	200 TB	198 TB	199 TB
RAL-LCG2-ECHO_TEST	3.22 TB	3.65 TB	3.38 TB	3.50 TB

# Data transfers:

ATLAS total data breached one exabytes mark in rucio: at 120 PB, UK is at 12% of total.



Who is a shy, solitary animal, except in mating season?

# ATLAS UK Cloud: updates from sites

Based on inputs from sites (RAL, Lancaster, Liverpool, Oxford, QMUL, Glasgow, RHUL, Birmingham, Edinburgh) : Many thanks

Site	Major work undertaken since last GridPP meeting
<b>General:</b>	Completed the migration of OS and services from CentOS 7 to EL8 and EL9.
<b>RAL</b>	<ul style="list-style-type: none"><li>- Antares upgrade to CTA5 and Arc-CE upgrades were successful, no intervention needed for ATLAS.</li><li>- New Lenovo hardware in production (details in Alastair and Tom's talks).</li></ul>
<b>Oxford</b>	<ul style="list-style-type: none"><li>- Retired 48 "Guzzlers" worker nodes (1,536 cores).</li></ul>
<b>QMUL</b>	<ul style="list-style-type: none"><li>- Ongoing data center refurbishment.</li><li>- Hardware upgrades for several service nodes.</li><li>- Deployment planned for new Storm server hardware and new site switches (Sonic OS + LHCONE).</li></ul>
<b>Glasgow</b>	<ul style="list-style-type: none"><li>- Added 2,304 Ampere Altra Max M128-30 cores.</li><li>- Set up a new heterogeneous endpoint with dual queues (ARM &amp; x86) (details in Emanuele's talk).</li></ul>
<b>RHUL</b>	<ul style="list-style-type: none"><li>- Decommissioned old equipment.</li><li>- Installed new Lenovo compute nodes.</li><li>- Migrated provisioning system from Spacewalk+Puppet to The Foreman+Ansible.</li></ul>
<b>Birmingham</b>	<ul style="list-style-type: none"><li>- Completed removal of VAC; all jobs now run through CondorCE+Condor.</li><li>- Commissioned new workers (+20% compute increase) and updated XCache storage.</li></ul>

Which woodland critter has soft, reddish-brown fur?

# ATLAS UK Cloud: updates from sites

Based on inputs from sites (RAL, Lancaster, Liverpool, Oxford, QMUL, Glasgow, RHUL, Birmingham, Edinburgh) : Many thanks

Site	Major work undertaken since last GridPP meeting
<b>Edinburgh</b>	<ul style="list-style-type: none"><li>- Preparatory work for Exascale@ACF impacted wider research computing at UoE.</li><li>- Major network upgrade at UoE, expected to finish in Q4 2024.</li></ul>
<b>Manchester</b>	<ul style="list-style-type: none"><li>- Storage migration from DPM to CEPH.</li></ul>

Site	Major Problems Faced and Resolved
<b>General / RAL</b>	<ul style="list-style-type: none"><li>- Challenges from Rocky/Alma (8/9) migration. Xrootd related gateway issues (details in Alex's LHCb talk )</li></ul>
<b>Lancaster</b>	<ul style="list-style-type: none"><li>- CEPH storage became full, resolved by clearing space and adding new storage.</li><li>- Lancaster serves as a remote data site for Durham and Sheffield, with no significant strain on the system.</li></ul>
<b>Liverpool</b>	<ul style="list-style-type: none"><li>- University firewall misidentified external testing as port scanning, leading to the blocking of test server IPs.</li></ul>
<b>Oxford</b>	<ul style="list-style-type: none"><li>- Enabled tokens and resolved job failures due to vmem by using CGROUP_IGNORE_CACHE_MEMORY.</li></ul>

# ATLAS UK Cloud: updates from sites

Based on inputs from sites (RAL, Lancaster, Liverpool, Oxford, QMUL, Glasgow, RHUL, Birmingham, Edinburgh) : Many thanks

Site	Major Problems Faced and Resolved
RHUL	<ul style="list-style-type: none"><li>- Difficulty automating network setup with network-manager on EL9.</li><li>- Improved power efficiency by 3x with hardware changes, reducing from 0.71 to 0.23 W/HS (latest servers are at 0.14 W/HS).</li></ul>
Birmingham	<ul style="list-style-type: none"><li>- Encountered the 'annual' air conditioning problem and Alma9 xrootd gateway performance issues.</li></ul>
Site	Pending Issues and Plans for Resolution
Liverpool	<ul style="list-style-type: none"><li>- Reduced manpower is a challenge but is being managed with the current 1.5 FTE.</li></ul>
QMUL	<ul style="list-style-type: none"><li>- Major issue: Missing Storm EL9 update.</li><li>- Plan: Deploy new Lustre (with new hardware) by April 2025. Limited funds will allow only the replacement of storage expected to be decommissioned over GridPP7.</li></ul>
RHUL	<ul style="list-style-type: none"><li>- Xcache instability, requiring container or host restarts to resolve service failures every few days.</li><li>- IPV6 WNs and CE: Issues with DNS, network switch, host, and service configuration due to IPV4 being behind NAT.</li></ul>

# ATLAS UK Cloud: updates from sites

Based on inputs from sites (RAL, Lancaster, Liverpool, Oxford, QMUL, Glasgow, RHUL, Birmingham, Edinburgh) : Many thanks

Site	Pending Issues and Plans for Resolution
<b>Birmingham</b>	- Issue upgrading the gateway to Alma 9 due to poor performance compared with CentOS7; upgrade needs to be completed.
<b>Edinburgh</b>	- Lack of person-power/time has resulted in heavily firewalling the old ARGUS service to continue on CentOS7. Need to be migrated to Alma9

Site	Projection of Resource Availability for Next Year
<b>RAL Tier1</b>	- Covered in Alastair's talk yesterday.
<b>Lancaster</b>	- Upgrading to a 100Gb connection to JANET in September, with xrootd gateways expanded accordingly. - Projected slight increase in storage capacity with upcoming purchases. Compute capacity will likely remain level, as acquisitions will balance hardware retirement, though surprises are possible.
<b>Liverpool</b>	- With new worker nodes being brought online and some older ones retired, total site capacity should be approximately 57k HS. - Additionally, ~600TB (raw) storage will be brought online, split between ATLAS, LHCb, and other VOs (to be determined).



# ATLAS UK Cloud: updates from sites

Based on inputs from sites (RAL, Lancaster, Liverpool, Oxford, QMUL, Glasgow, RHUL, Birmingham, Edinburgh) : Many thanks

Site	Projection of Resource Availability for Next Year
QMUL	<ul style="list-style-type: none"><li>- Expected to provide 16,000 job slots and approximately 10PB of storage for ATLAS.</li><li>- However, without additional funds, capacity will be lost as compute hardware fails, as all compute is now out of warranty.</li><li>- New core switch planned during the GridPP7 time scale.</li><li>- New Storm server hardware and new world-facing site switches to be deployed (plan for Sonic OS + LHCONE).</li></ul>
RHUL	<ul style="list-style-type: none"><li>- Total resources will increase from 73k HS (6.2k slots) to 111k HS (8.4k slots), with 10% reserved for Tier 3.</li></ul>
Birmingham	<ul style="list-style-type: none"><li>- No planned change to capacity, though a 5-10% loss in compute power is expected over the year due to the natural wastage of old workers.</li></ul>

Which critter helps control the vole and squirrel population?

# Updates from ATLAS:

## Legacy VOMS Update

- Legacy VOMS retired for ATLAS VO: transitioned from voms2.cern.ch to atlas-auth.cern.ch.

## VP Queues Discussion

- Discussion on VP queues at [ATLAS S&C week](#).
- Communicated the importance of this service and our readiness to support its continued availability.

## Memory Management

- New memory management by ATLAS to increase high-memory slots without hardware changes [Link](#).
- Increase granularity of pull\_ups resource\_types => update CRIC for MaxRSS
- Balance LO, HI, VHIMEM to keep below PQ.meanrss => update CRIC for MeanRSS

## Token Migration Status [status link](#)

- For UK Cloud, only RALPP and Oxford CEs are passing token tests.

## Testing Frameworks

- Need to streamline SAM/Experiments Test Framework (ETF) with HammerCloud.
- Issues: sites running production jobs successfully but failing SAM/ETF affect WLCG A/R reports.
- Expected improvements with new Arc-CE based SAM/ETF tests.

## Preparing for HL-LHC and future analysis facilities.

- Useful experiences from DC24 and [IRIS-HEP 200Gbps Challenge Infrastructure](#), at 25% of HL-LHC scale.

# Thank you

- Compute resource delivery reached 155%, supported by stable storage and network operations, with the ATLAS UK Cloud's performance significantly exceeding pledged targets.
- The CentOS 7 migration milestone was successfully achieved with minimal impact on production services during the last quarter.

