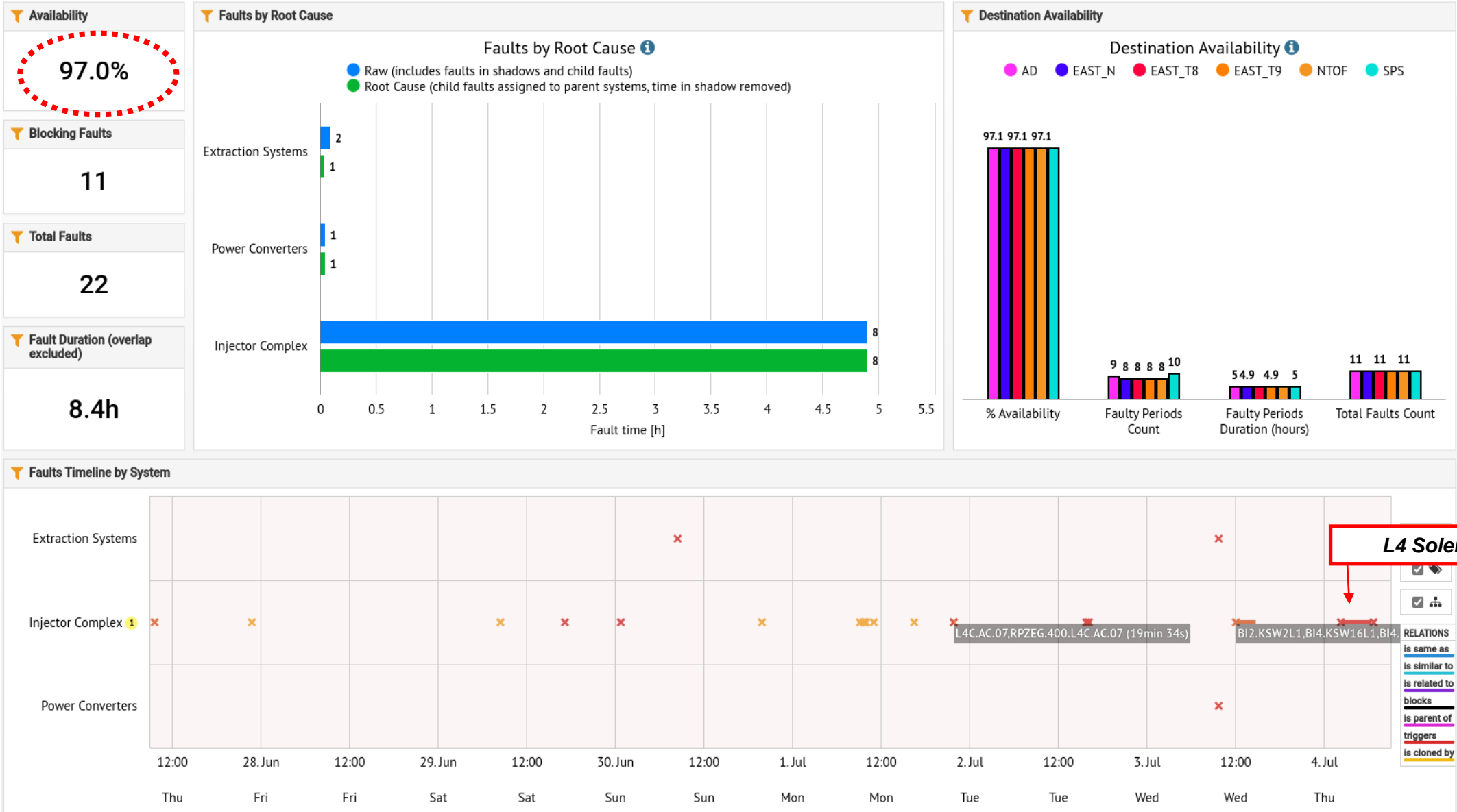


# PS Report week 27



Many thanks  
to the PS OP and coordination teams as well as all equipment experts and support teams!

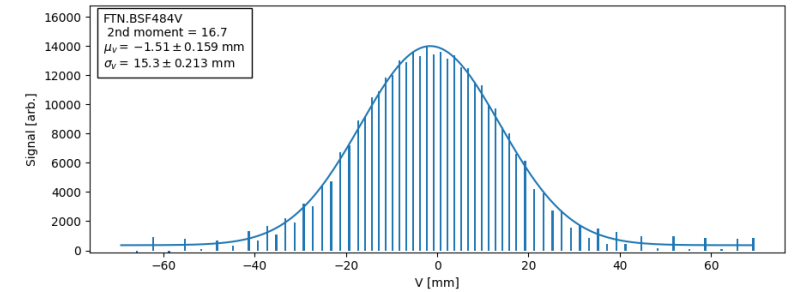
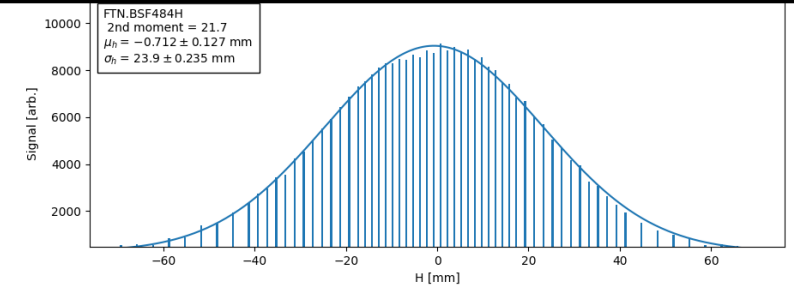
# Availability W26/27 (Thu-Thu 09:00)



# Main issues and activities

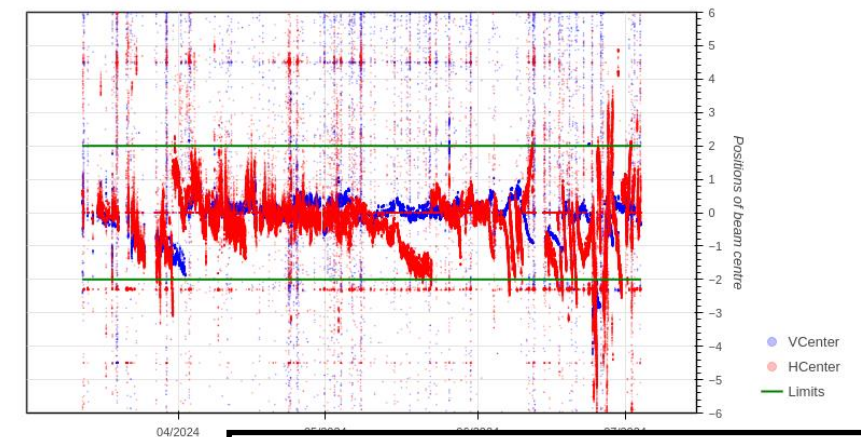
- Excellent availability in W26 and start of W27!
- Main fault is Linac4 overnight Wednesday/Thursday (4h downtime)
- Adjustments of the optics in transfer line to TOF to increase beam size on target with extracted bunch length of 44ns
  - Reloaded optics from previous years (2022-2023), beam size remains a too small in H on target
  - Little influence on the losses in ring and transfer
  - Will require some further work
  - Benefits for bunch rotation with double TOF/EAST to be checked at higher intensities
- EAST T8 set back to 80e10 ppp, fluctuations on the beam centering observed, being monitored.
- Drifts in radial position of the beam at top energy noticed on all beam. May impact transfer to SPS and efficiency of processes on flat top (e.g. MTE efficiency). Ongoing investigations.

## Beam size on target with 44ns extracted bunch length and old optics



Centering of T8 beam throughout run

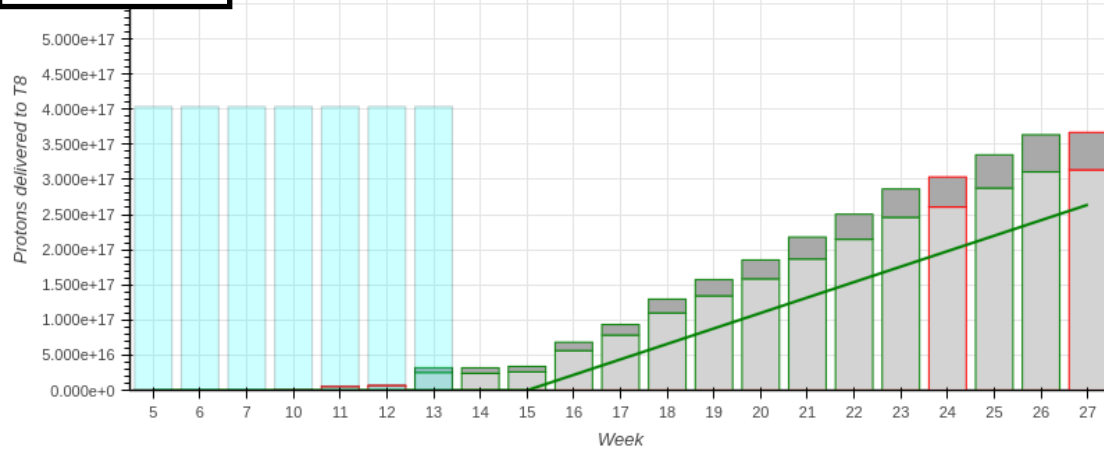
Plot showing the centering of the T8 beam throughout the run



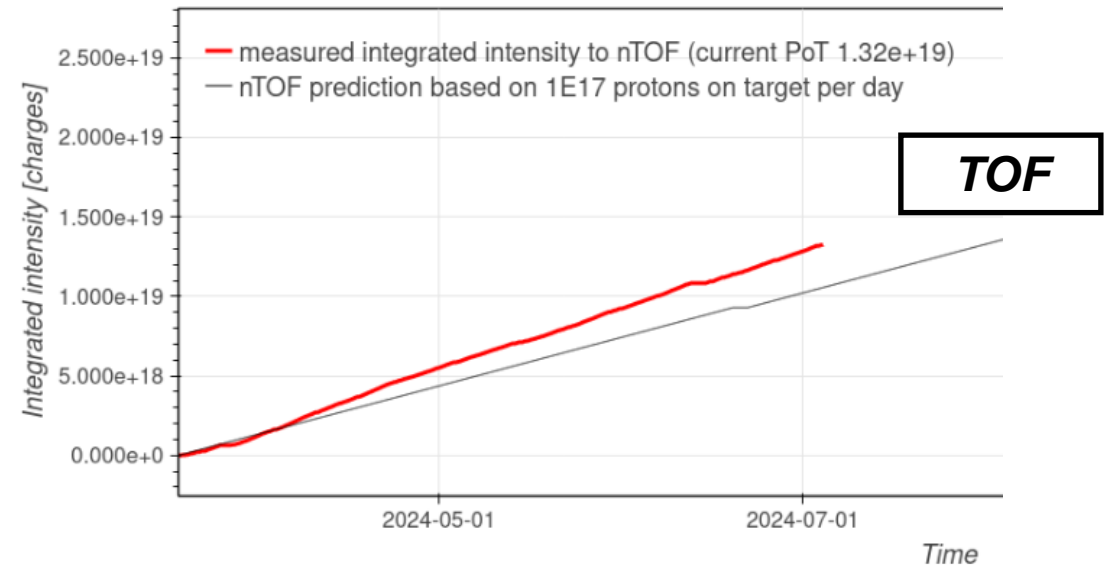
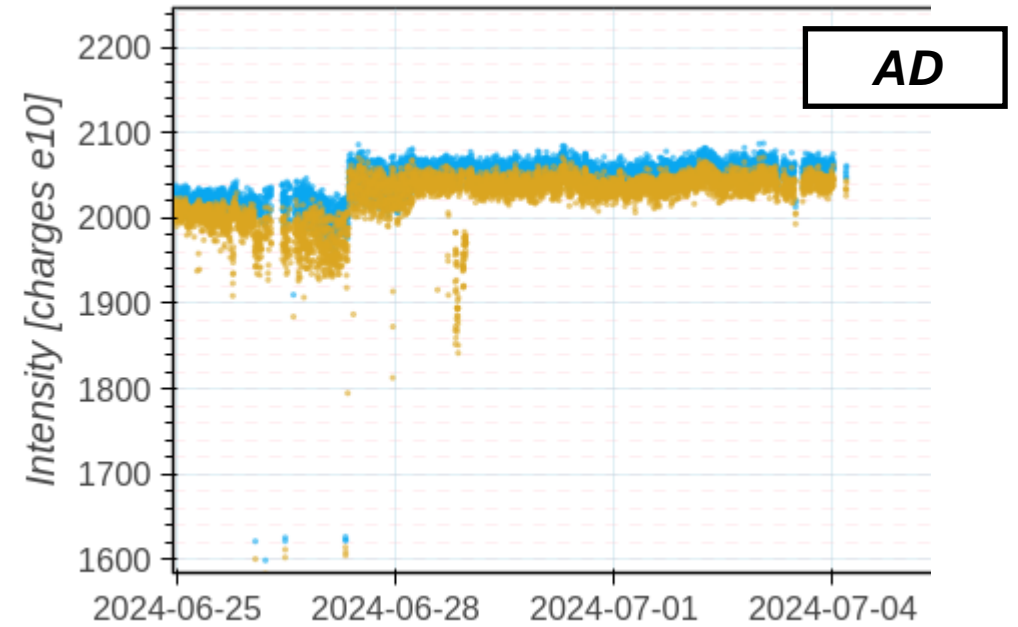
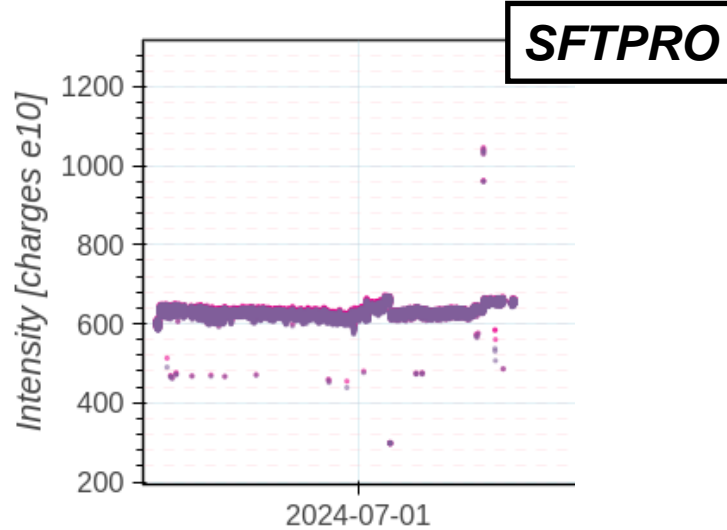
## T8 centering fluctuations

# Delivered intensity

**EAST T8**



■ Cumulative Sum T8 
 ■ Cumulative Sum PR 
 — Nominal reqs. 
 ■ Excluded 
 ■ Commissioning



# Questions and Comments

PS Coordinator for week 27 – **Alexandre Lasheen**

PS Coordinator for week 28 – **Yann Dutheil**



**9:00** live meeting at the CCC on Wednesday/Friday

Zoom link to follow the meeting on remote: <https://cern.zoom.us/j/9372114100?pwd=L29BcmIHUENCdFBRSytXYVcrM1B4Zz09>

Meeting ID : 937 211 4100

Passcode: 525463