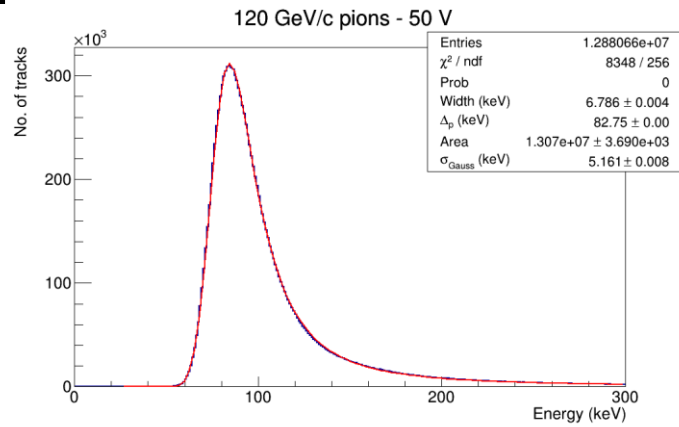
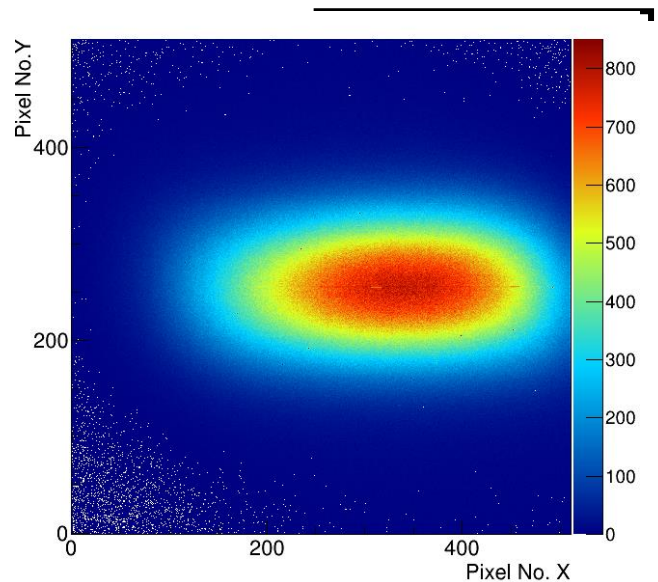


# Medipix beam test

Benedikt Bergmann on behalf of the Medipix team at the Institute of  
Experimental and Applied Physics

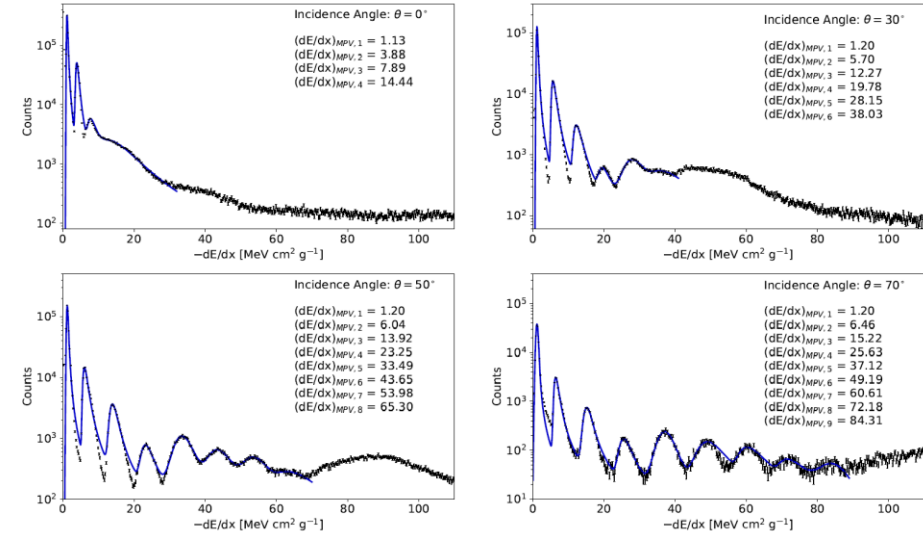
# Motivation - Addressed detector development

- Characterization of different sensor materials
- Timepix4 R/O system
  - Test of slow and logarithmic gain
- Timepix2 – adaptive gain and Continuous Read Write
- Test of software for real-time analysis and data compression



Beam spot and stopping power measurement with Timepix3 Quad (September 2021)

## Timepix3



## Timepix2 – adaptive gain

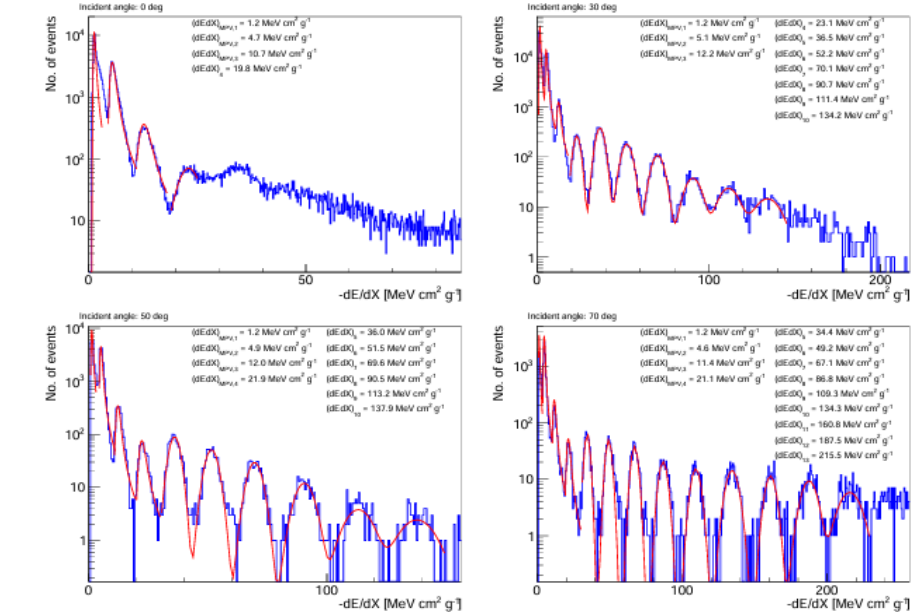


Figure 1: Comparison of the dE/dX measured in a mixed ion beam for the different impact angles investigated. Using spectrum stripping by iterative Landau- and Gauss-curve fitting different ion species are identified.

# Beam and infrastructure requirements

## Beam requirements:

- ~300 kParticles/spill
- Primary beam
- Fragmented beam

Frequent access

## Infrastructure requirement:

- Moveable table (e.g., DESY)
- Standard table for PCs, readout, voltage source

