

UR55 REGISTRES DE DESENFUMAGE 3D / SCAN

Claudia Delgado

06/08/2024

Registres A

9A

8A

7A

6A

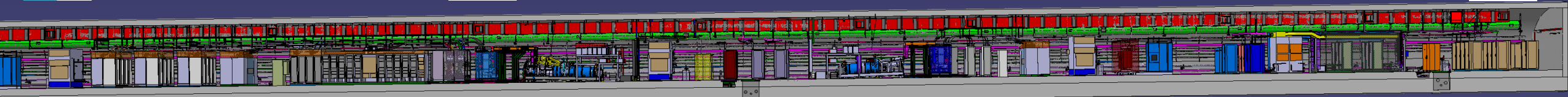
5A

4A

3A

2A

1A



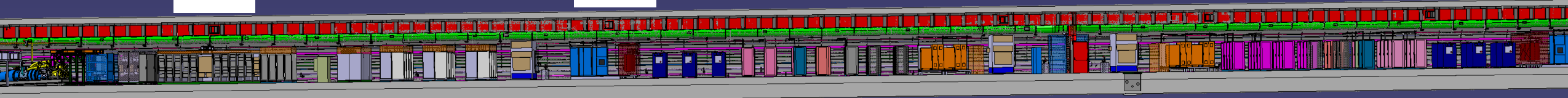
14A

13A

12A

11A

10A



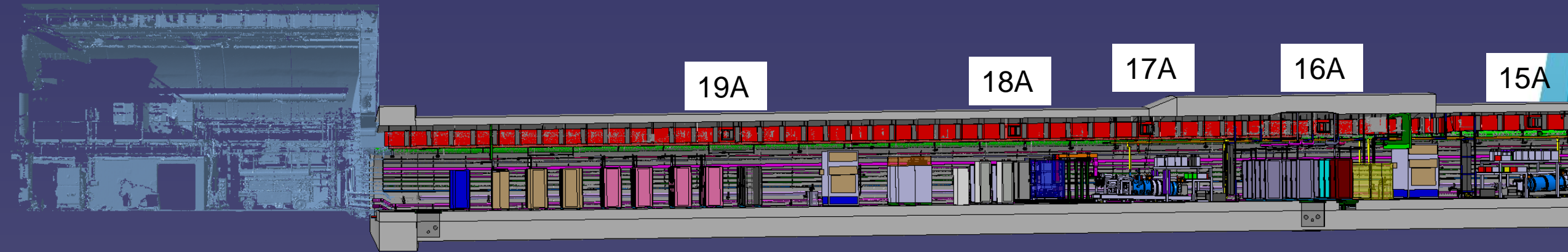
19A

18A

17A

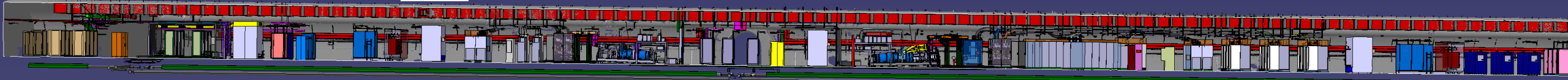
16A

15A



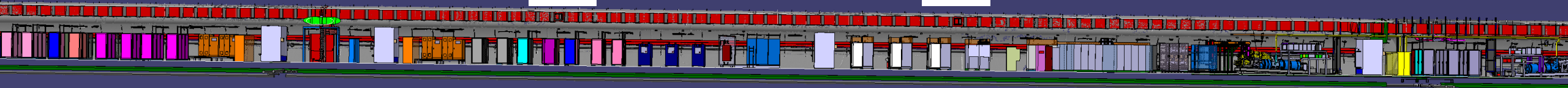
Registres B

1B



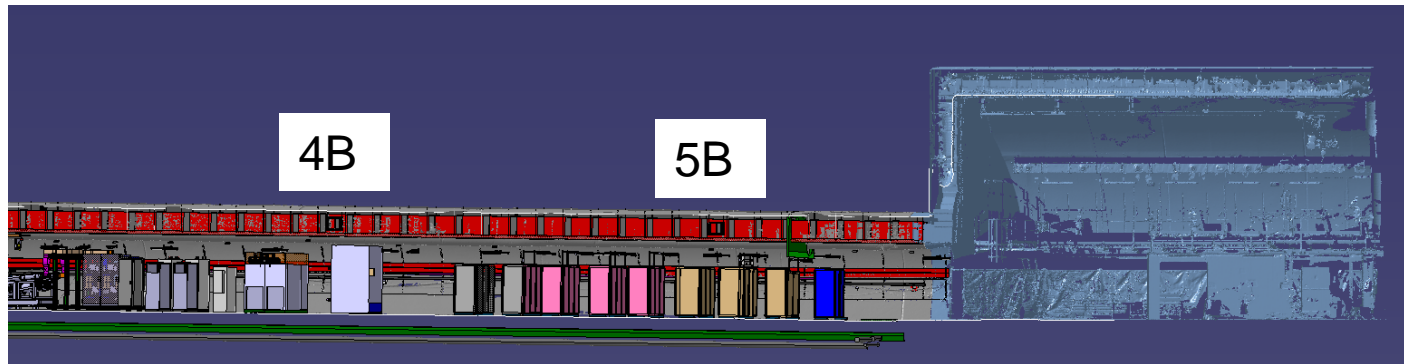
2B

3B

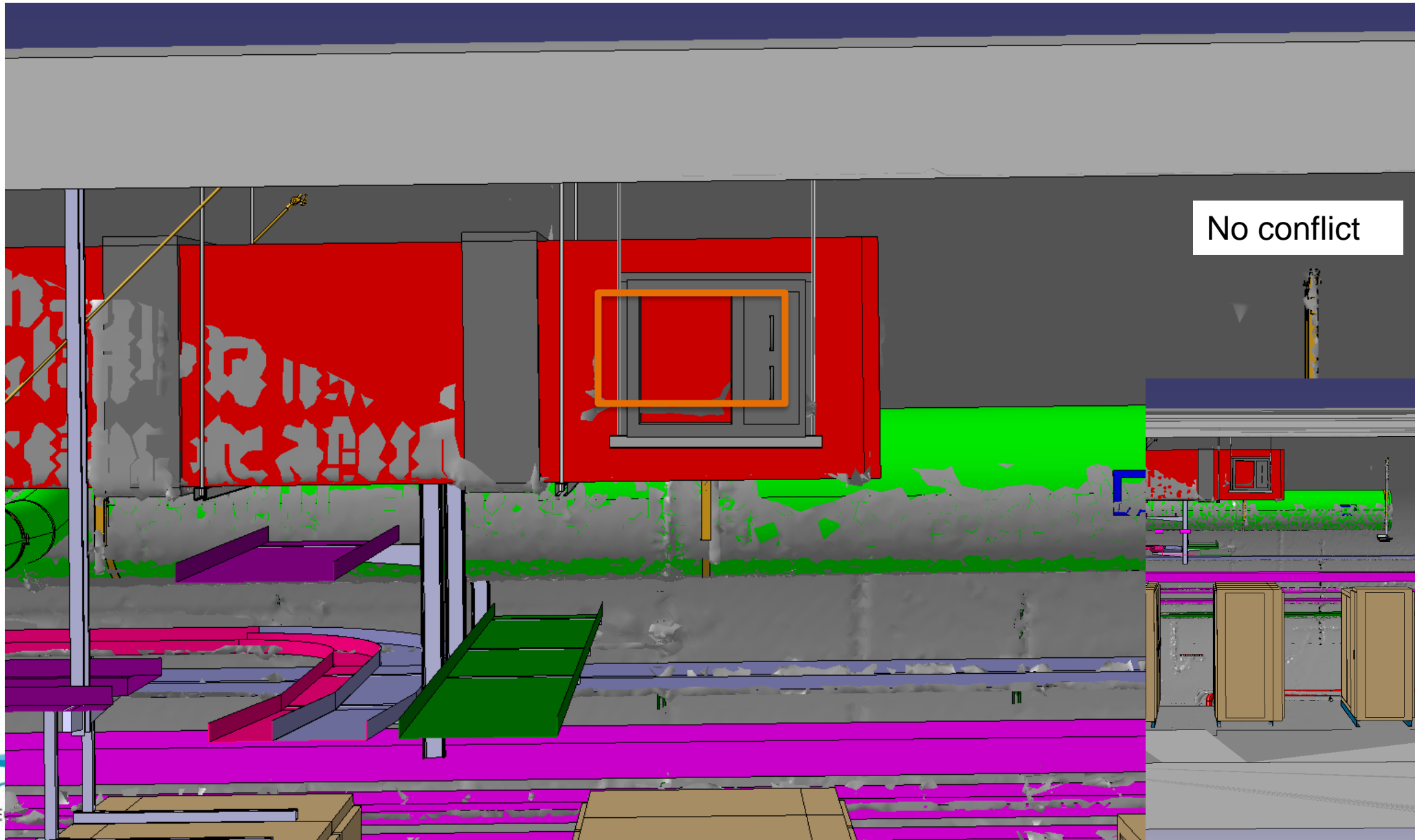


4B

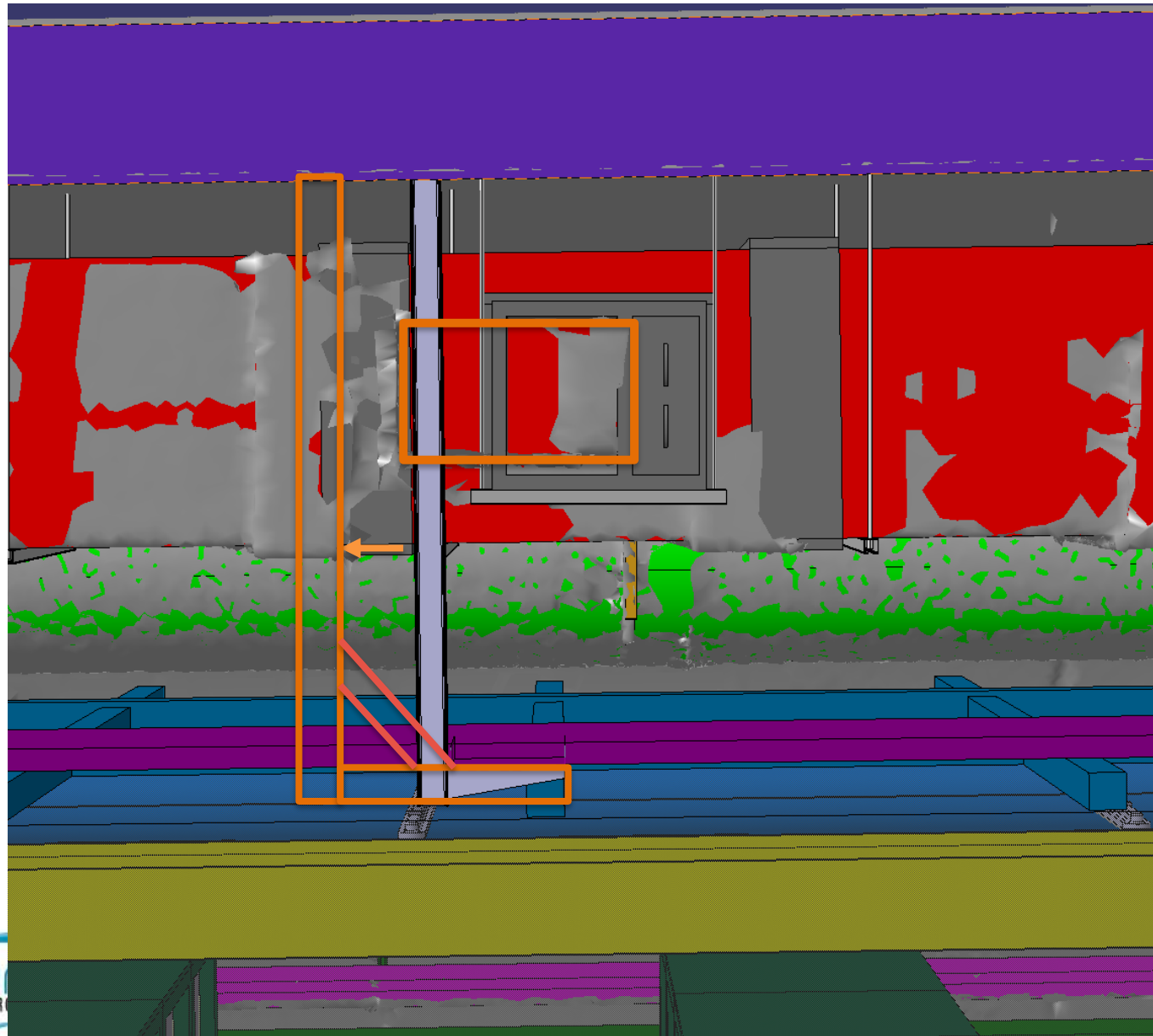
5B



Registre 1A

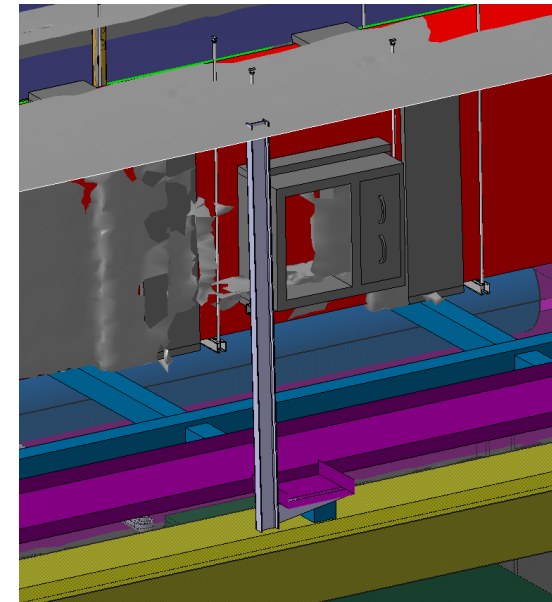


Registre 2A

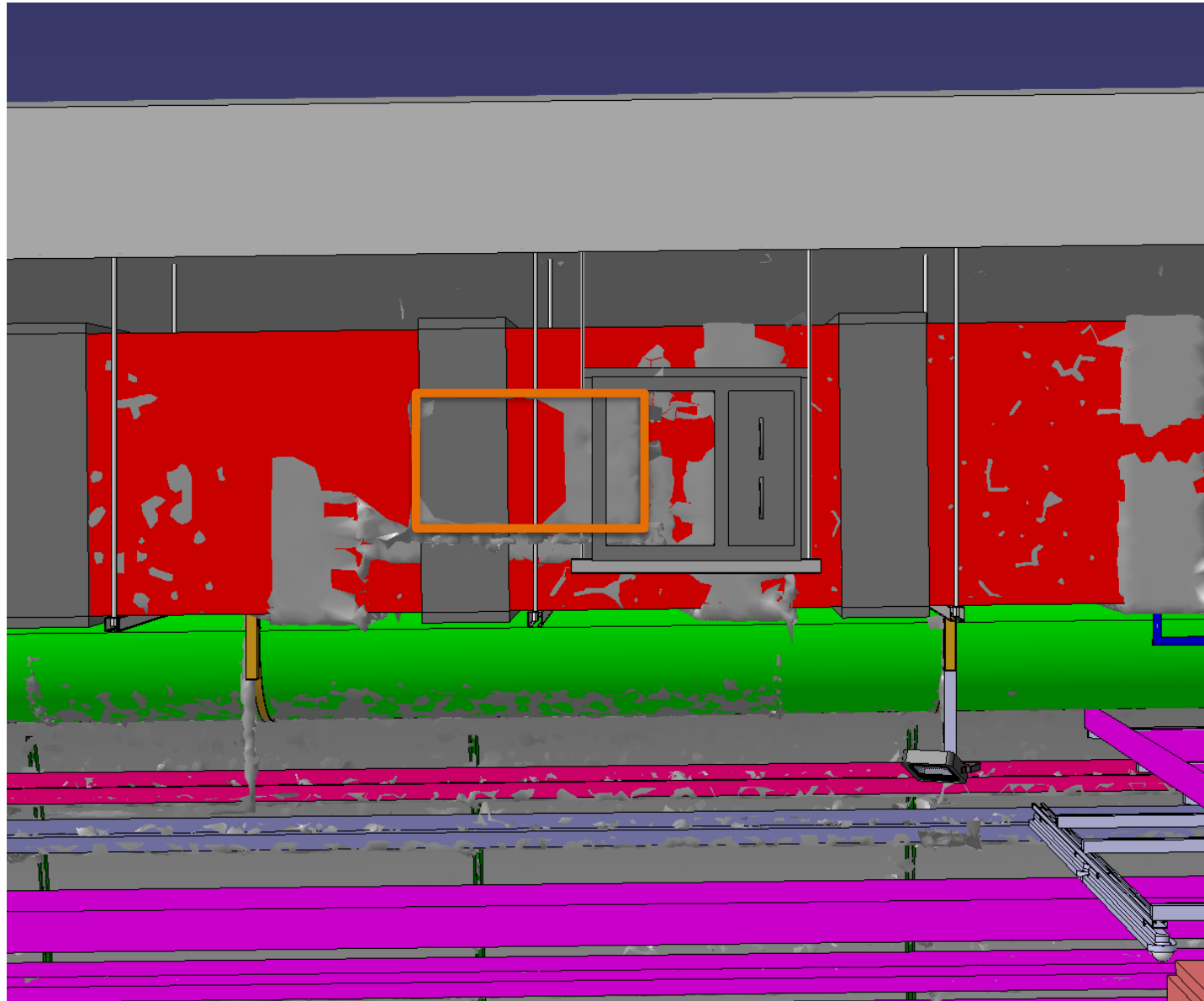


Conflict – Support
échelle à cable

Solution proposée :
Déplacer le support
sur le côté

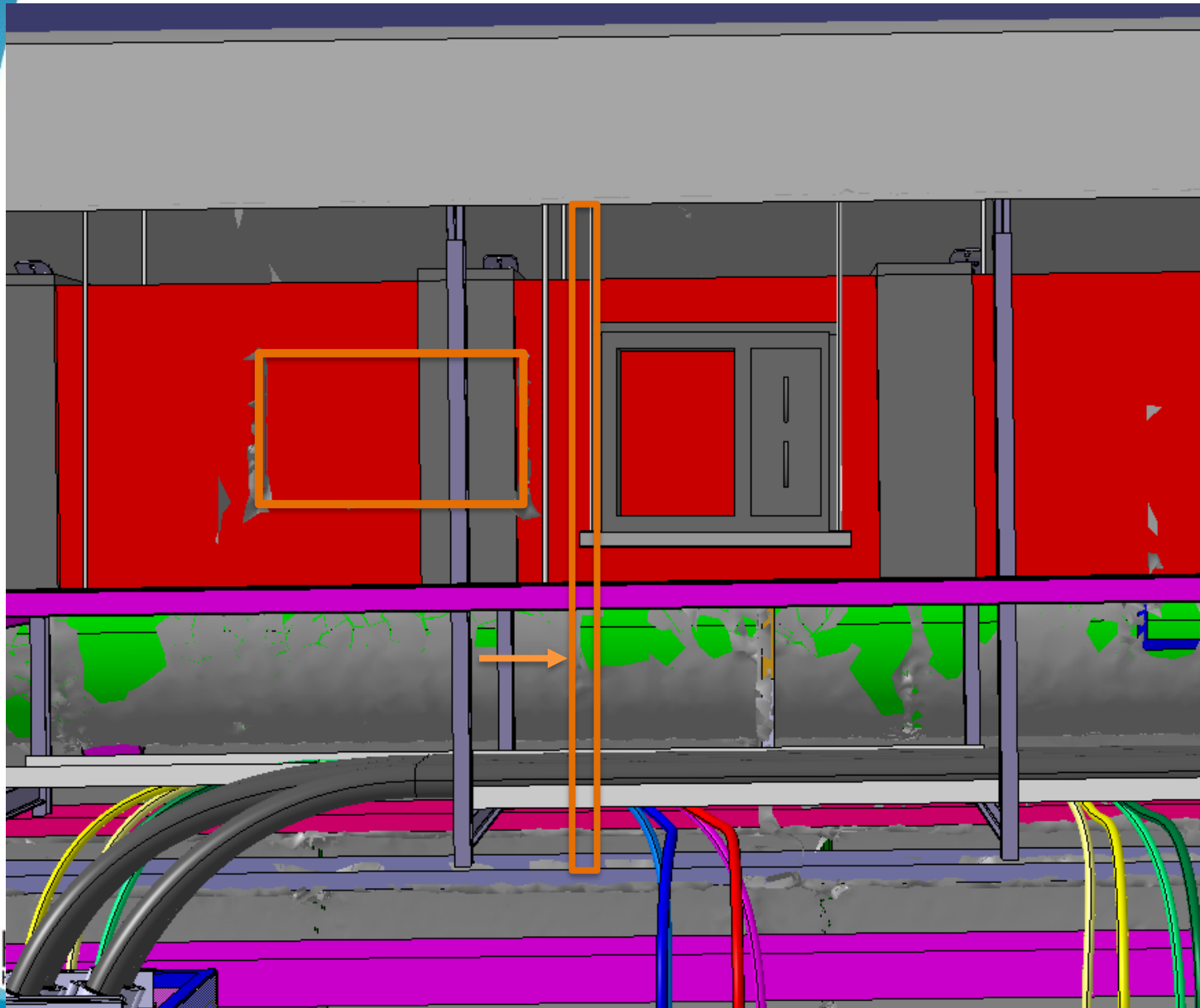


Registre 3A



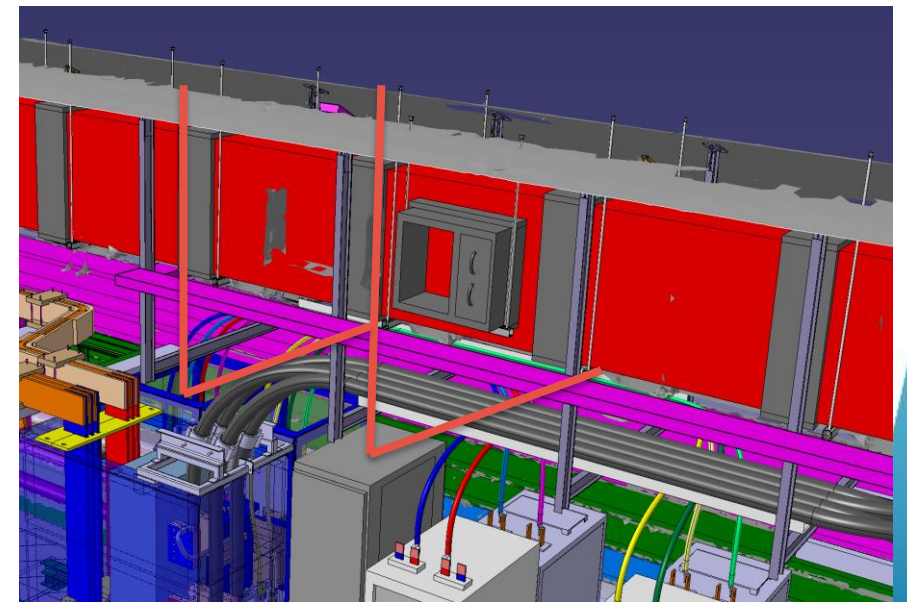
No conflict

Registre 4A

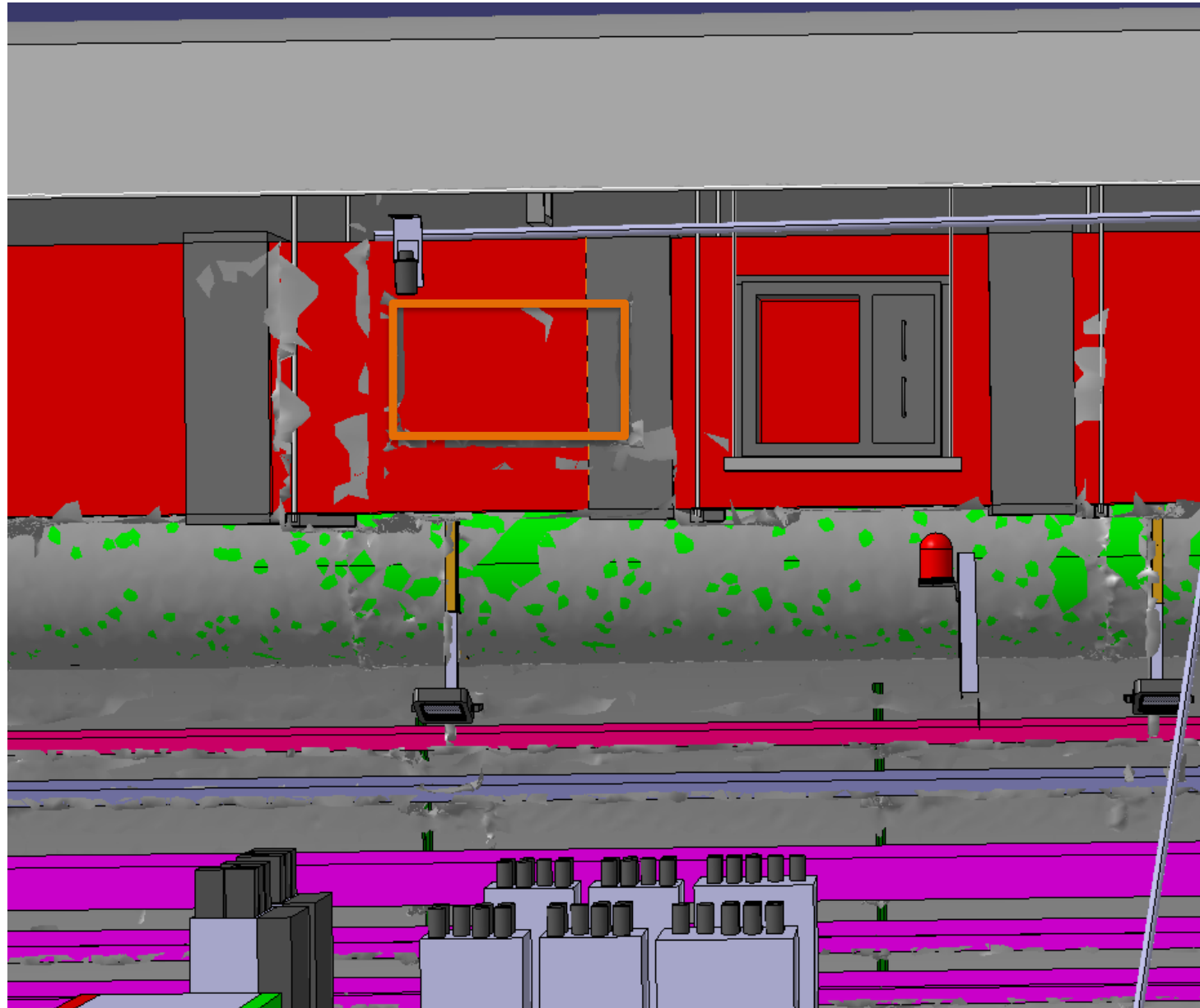


Conflict – Support
cablage DC left

Solution proposée :
Déplacer le support
sur le côté

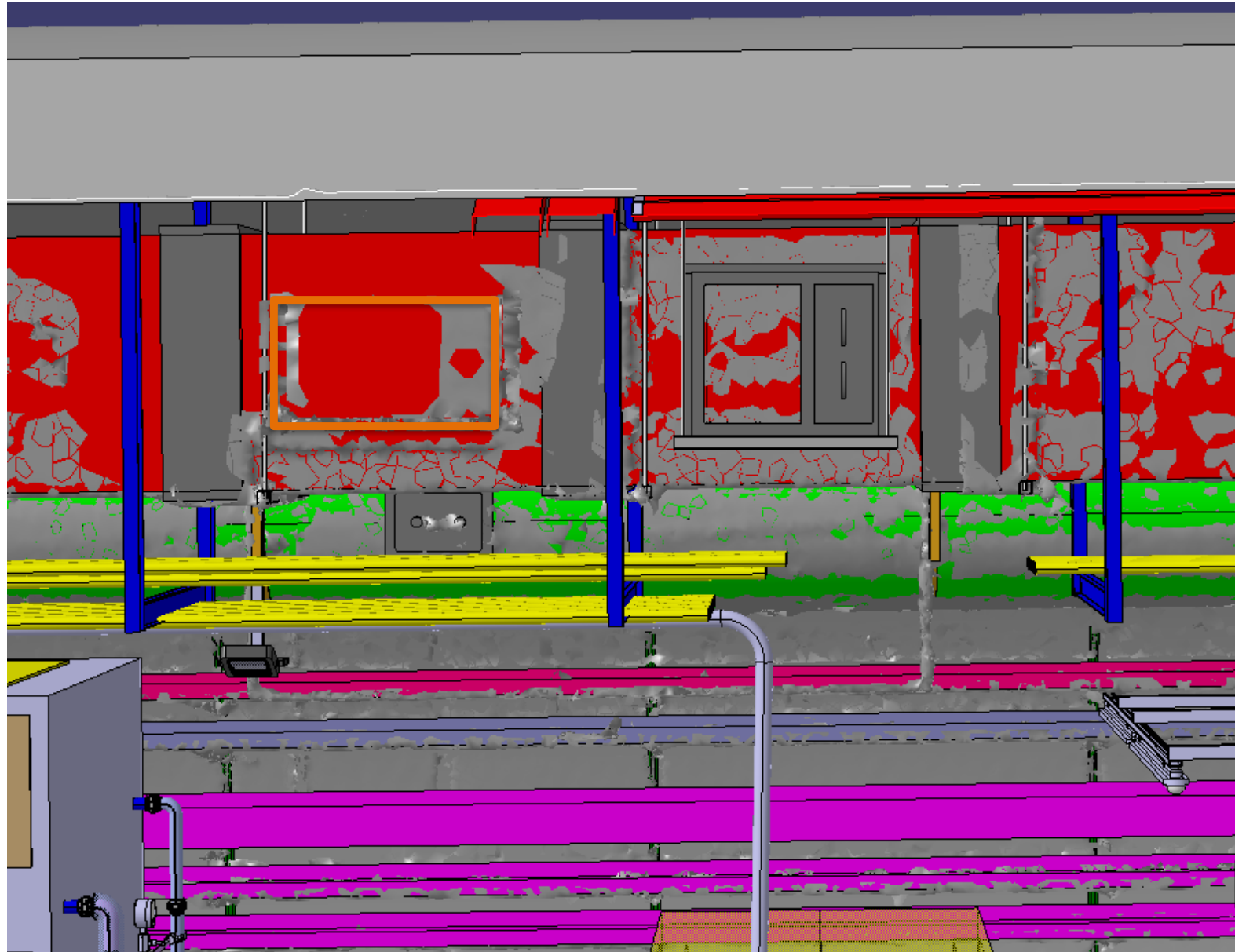


Registre 5A



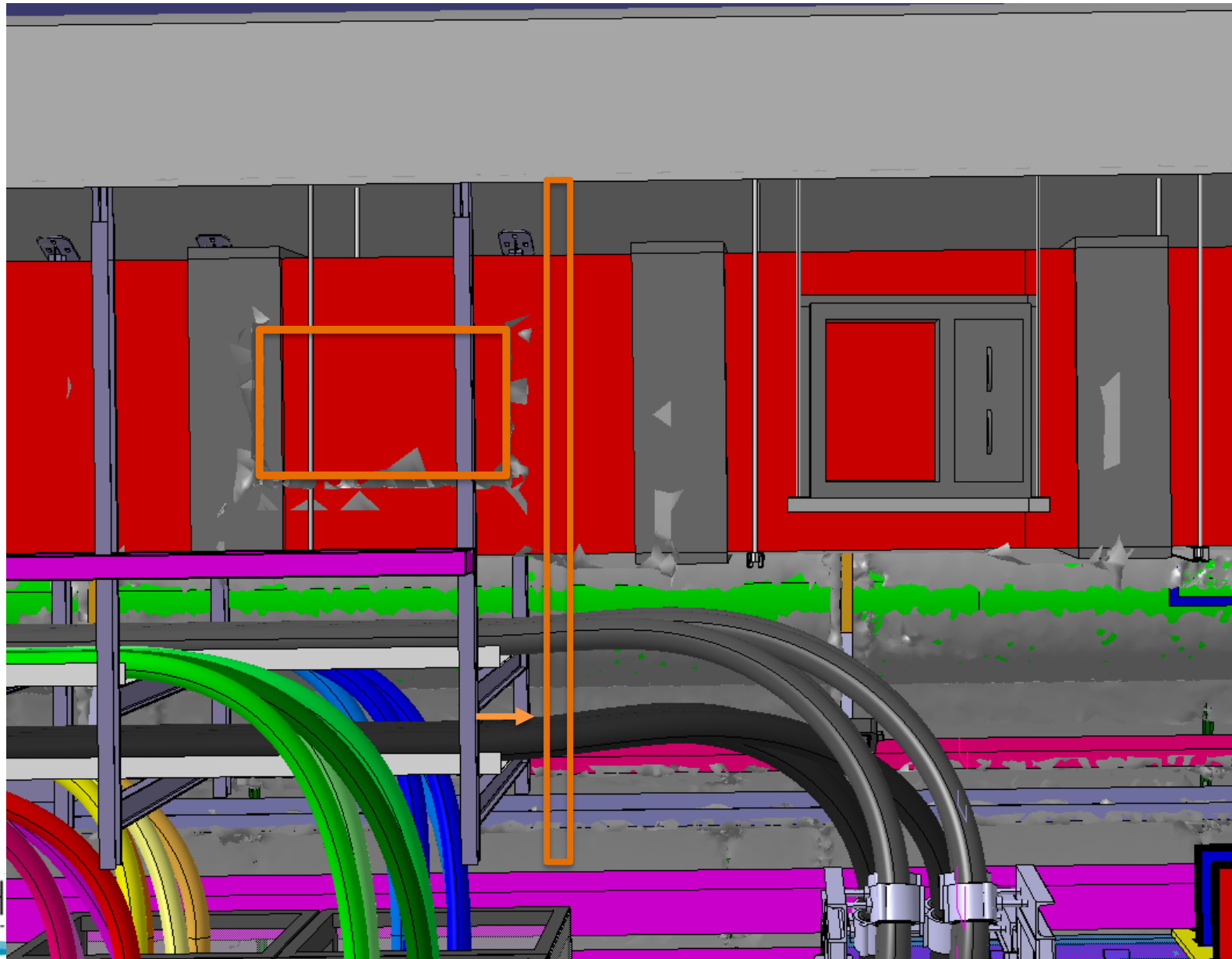
No conflict

Registre 6A



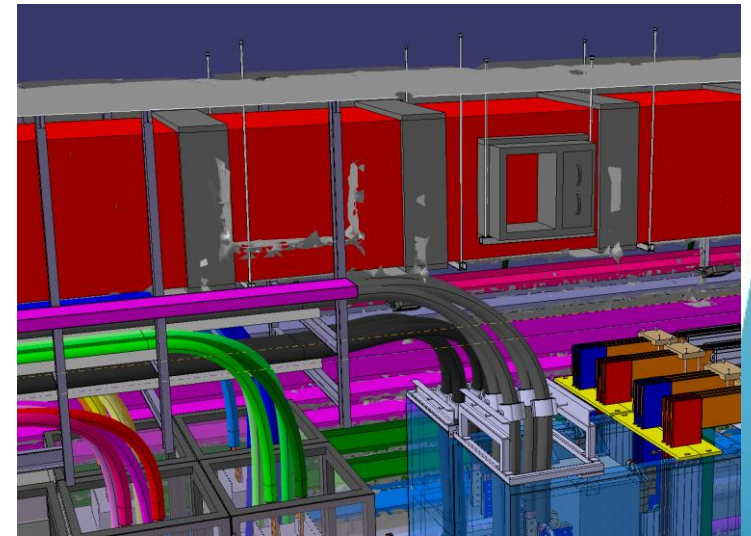
No conflict

Registre 7A



Conflict – Support
cablage DC left

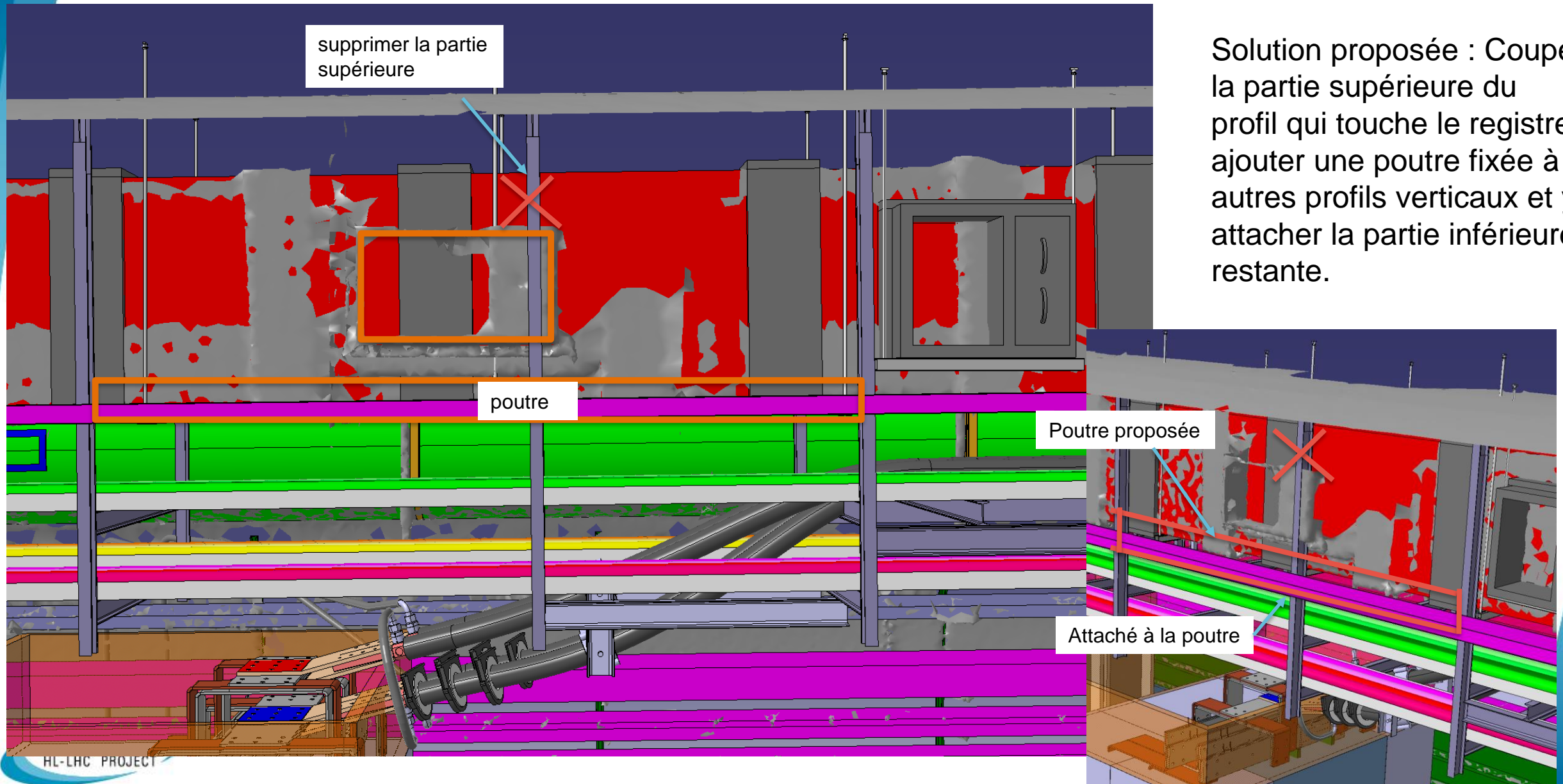
Solution proposée :
Déplacer le support
sur le côté



Registre 8A

Conflict – Support cablage DC left

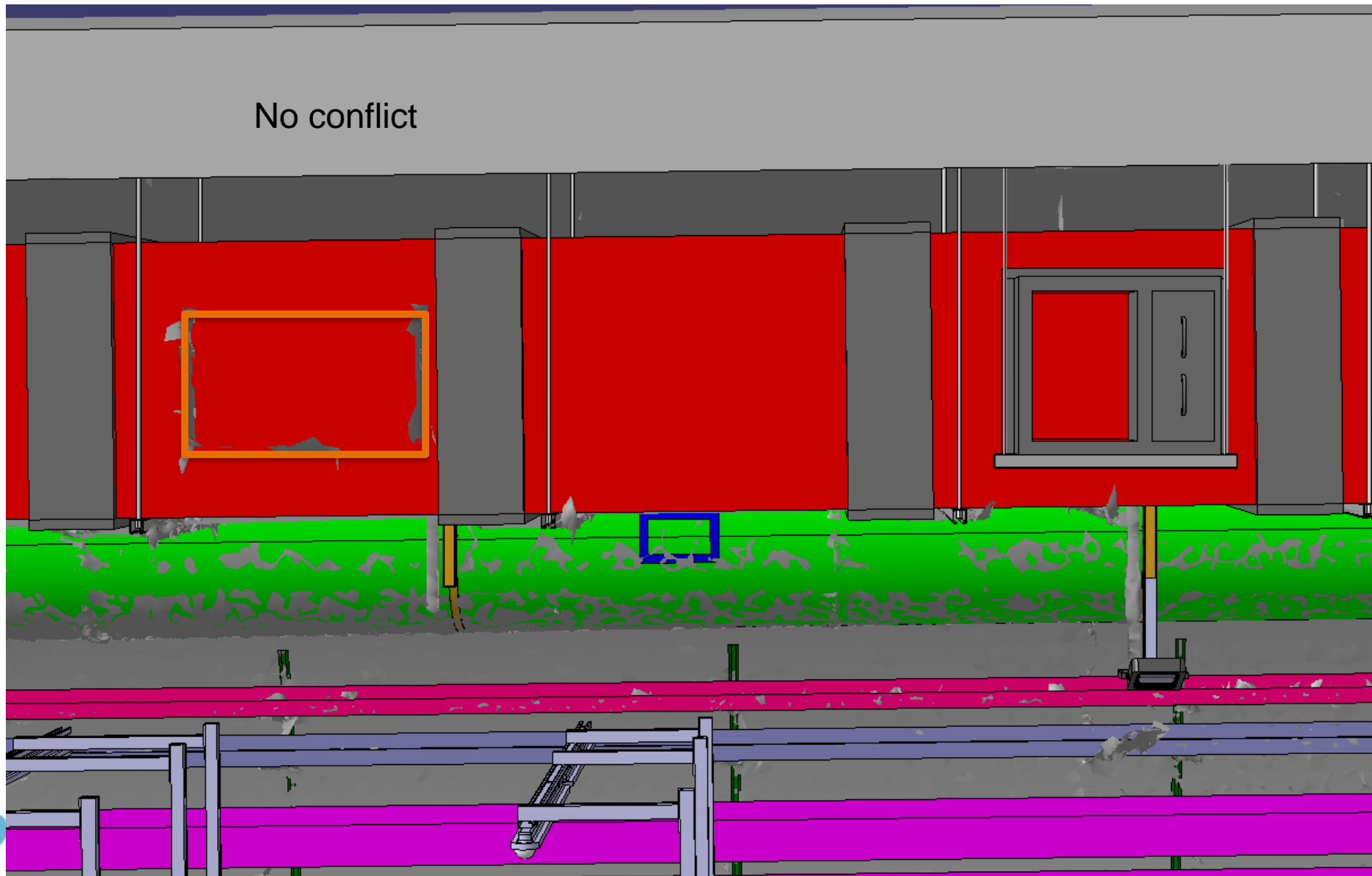
Solution proposée : Couper la partie supérieure du profil qui touche le registre, ajouter une poutre fixée à 2 autres profils verticaux et y attacher la partie inférieure restante.



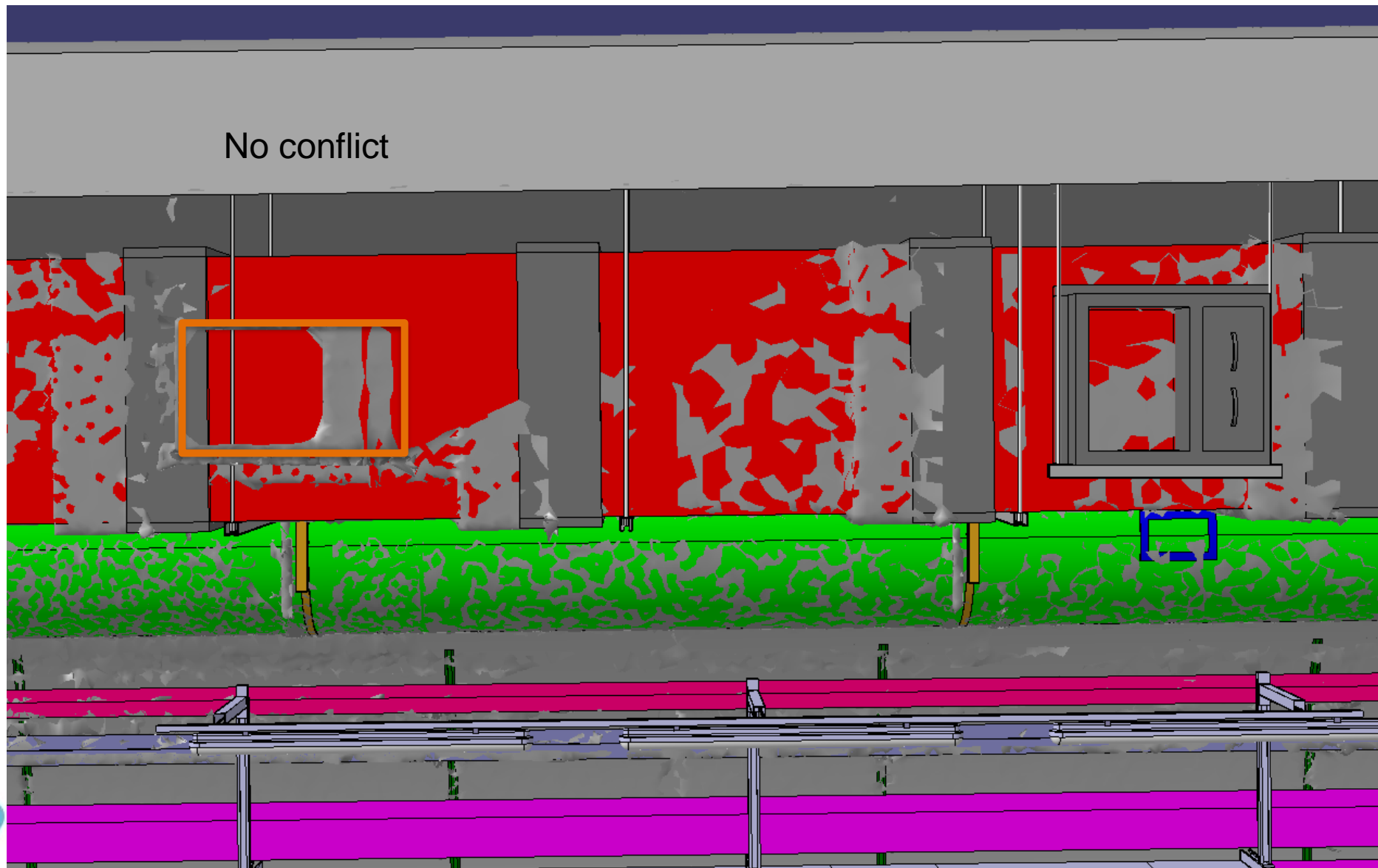
Registre 9A



Registre 10A



Registre 11A

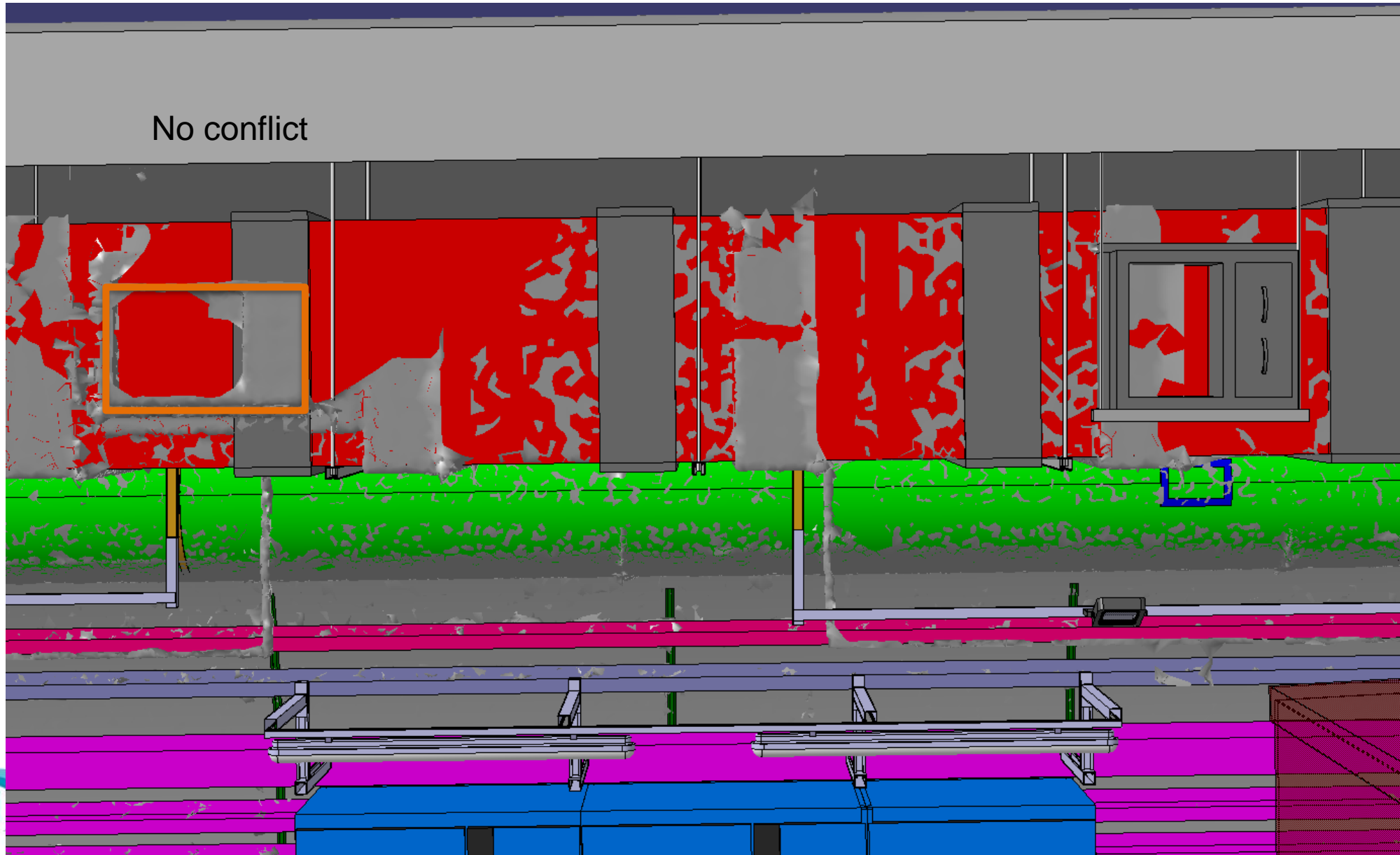


Registre 12A

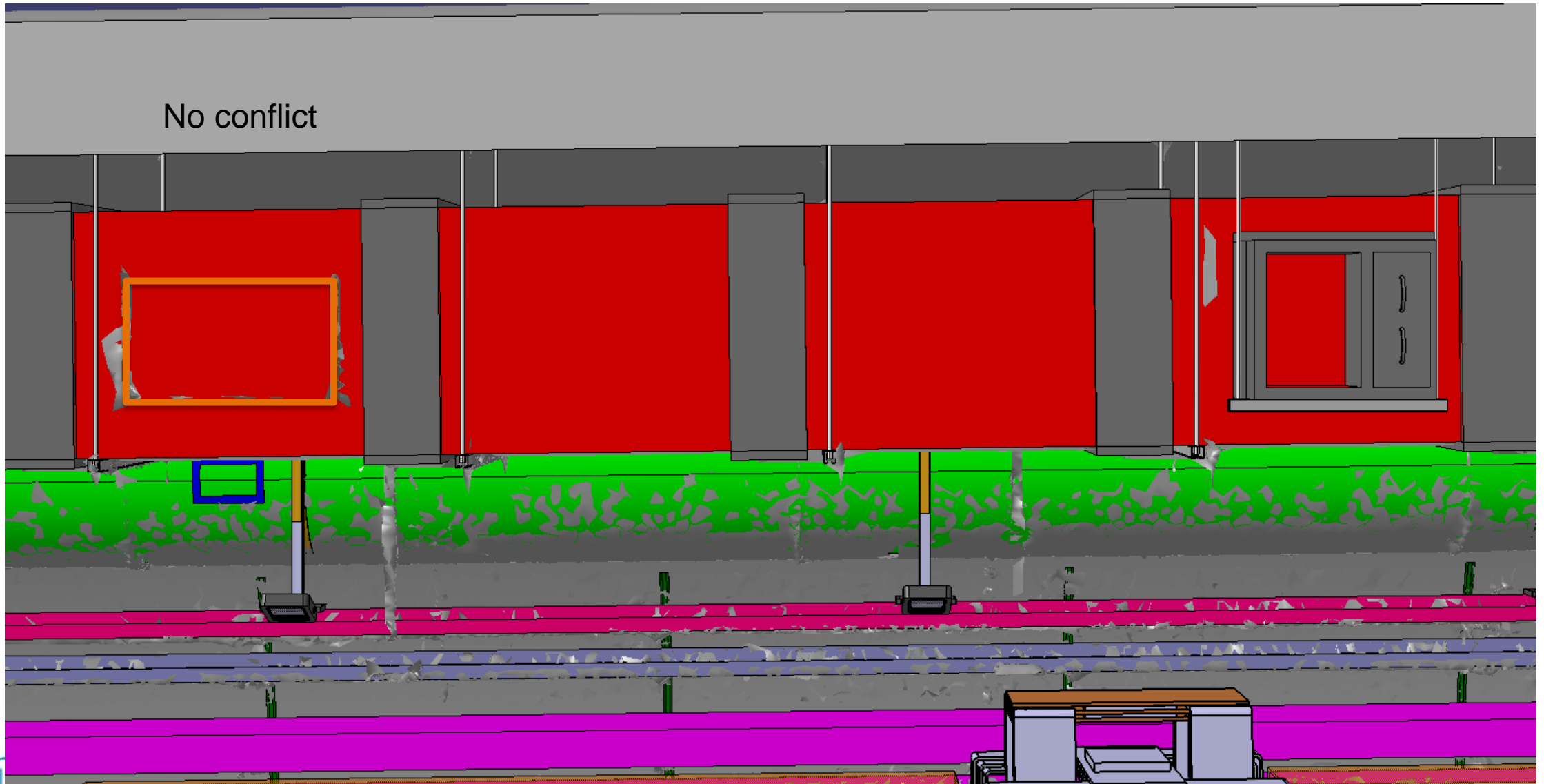


Registre 13A

No conflict



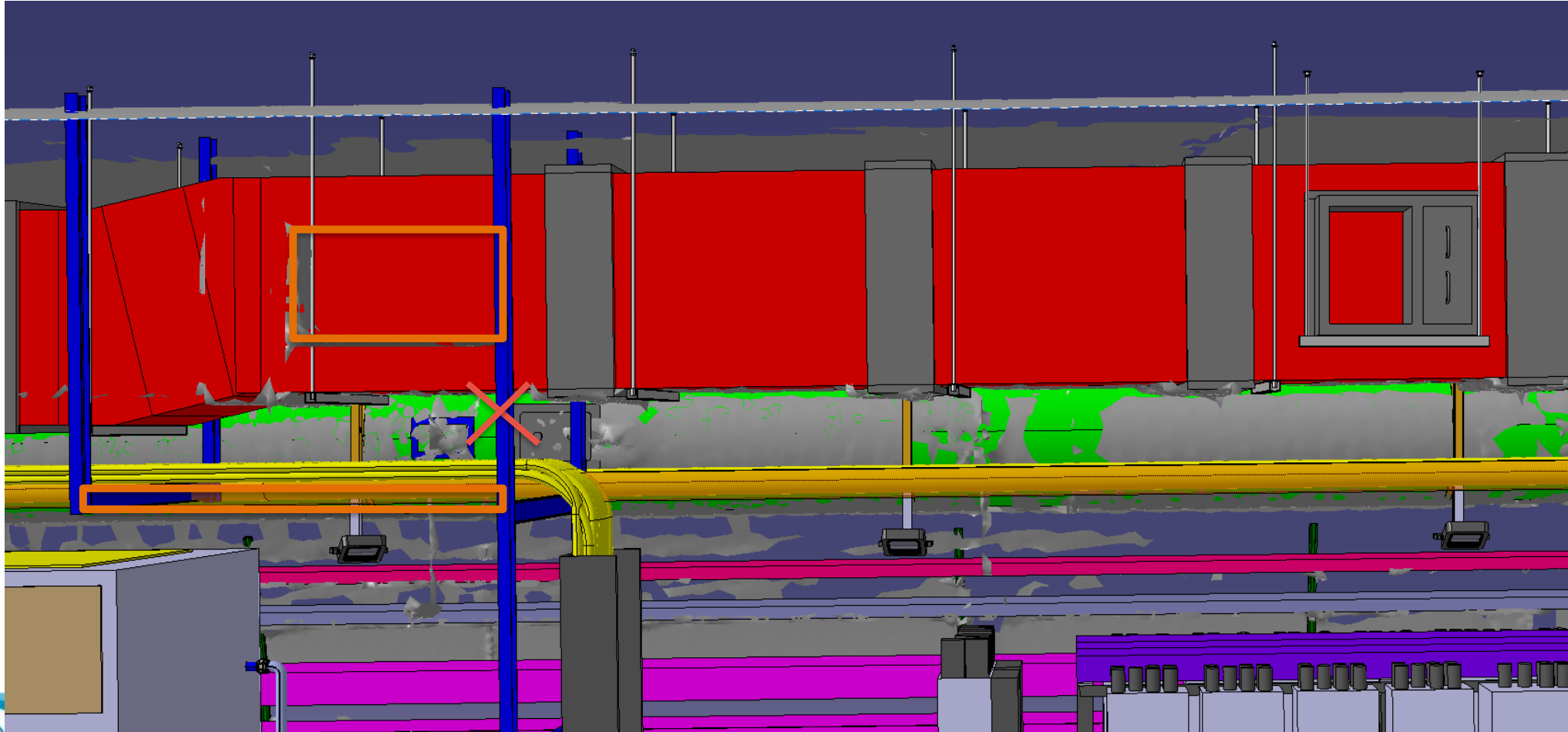
Registre 14A



Registre 15A

Conflict – Support equipment DFHX

Solution proposée: Couper le profilé vertical et d'ajouter une poutre horizontale pour maintenir la rigidité

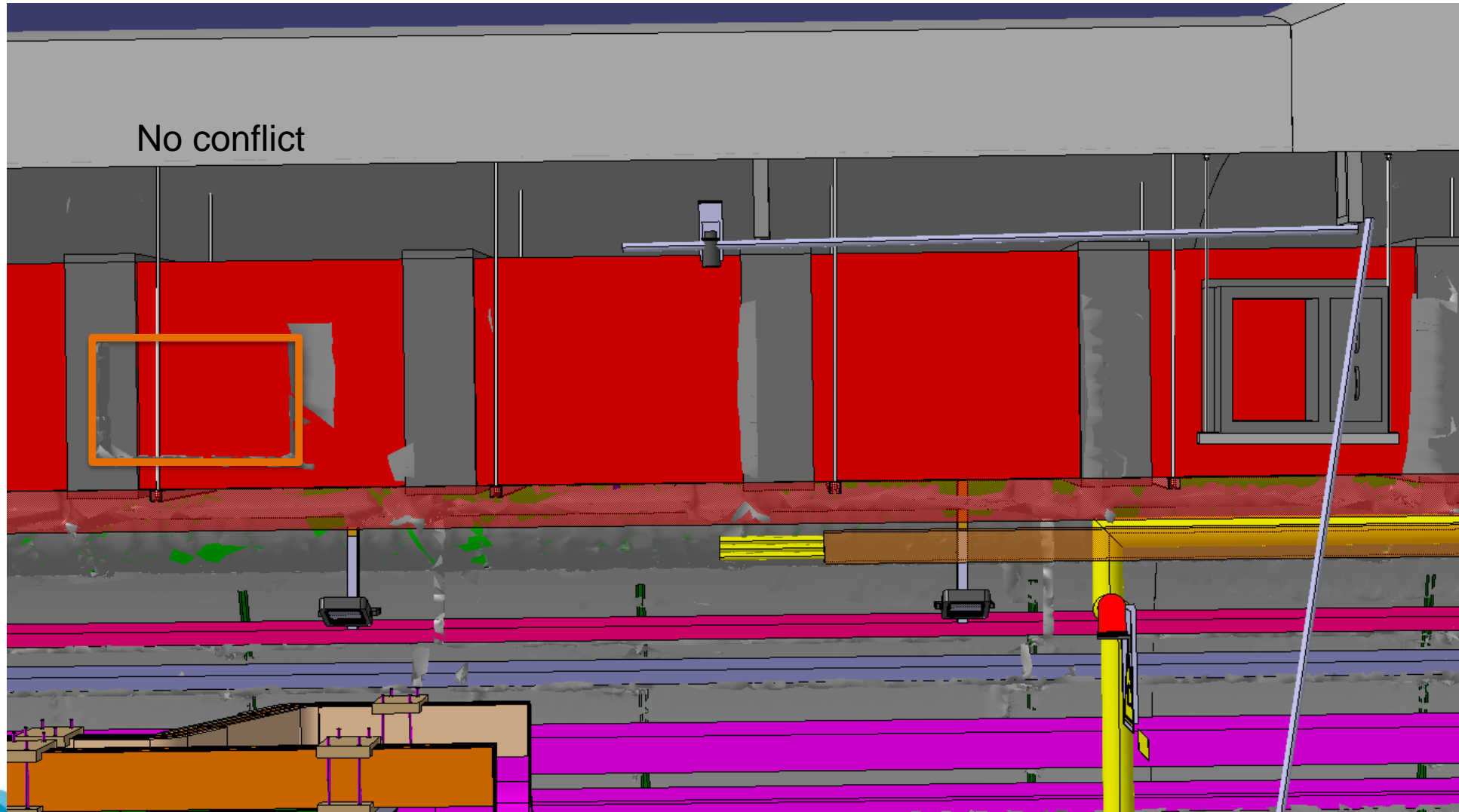


Registre 16A

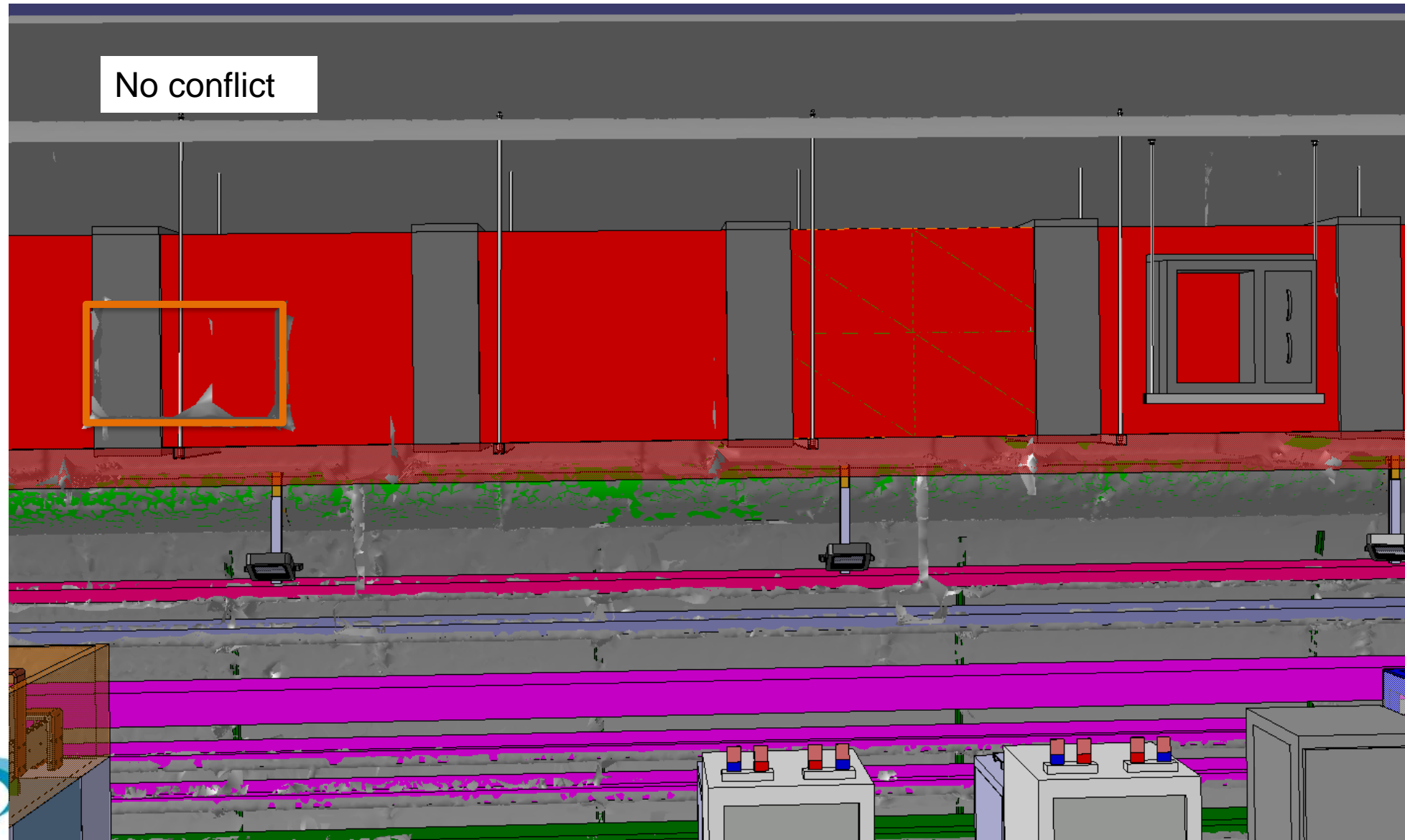


Conflict – Support equipment DFHM
Solution proposée : Déplacer le support sur le côté

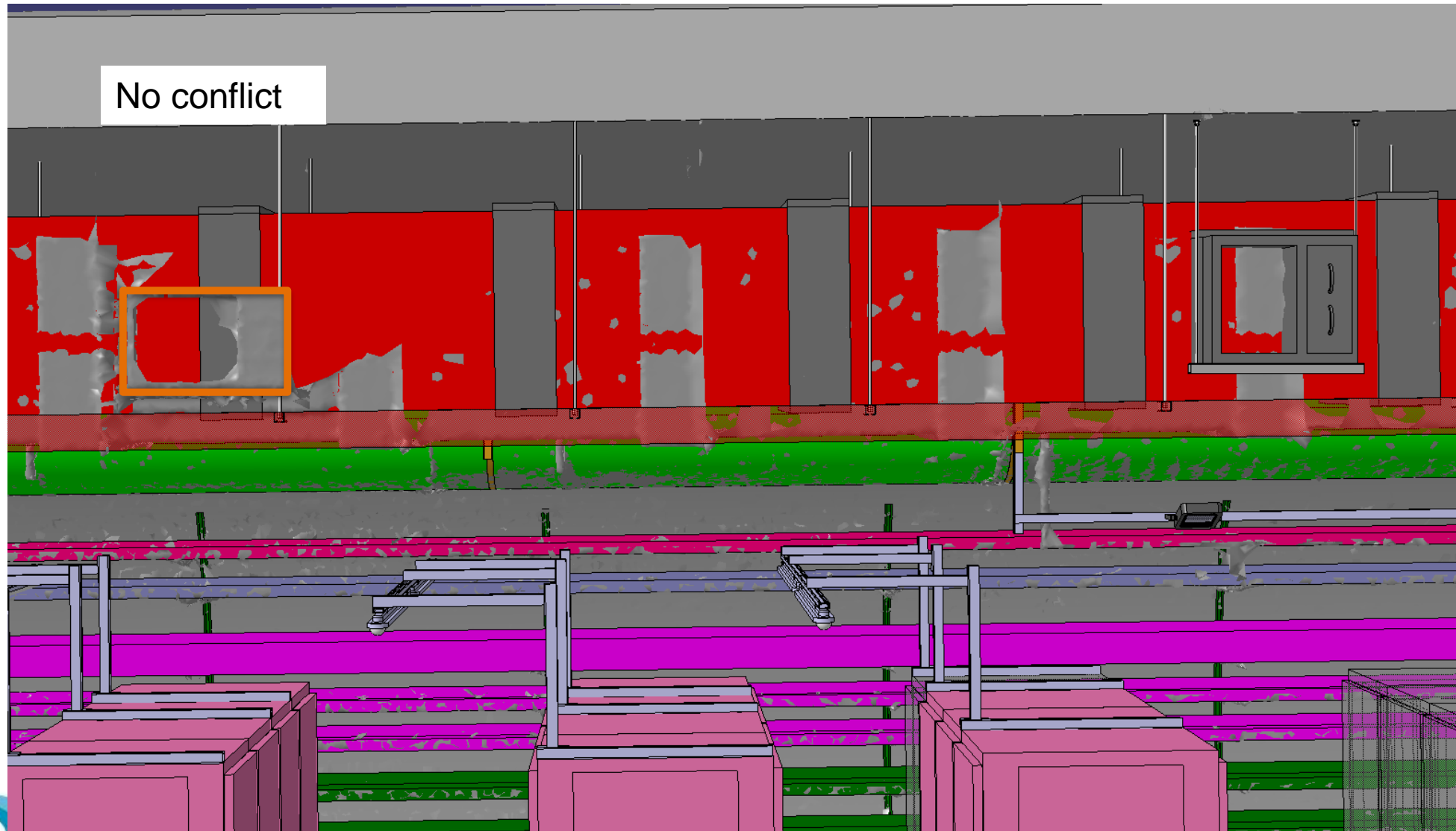
Registre 17A



Registre 18A

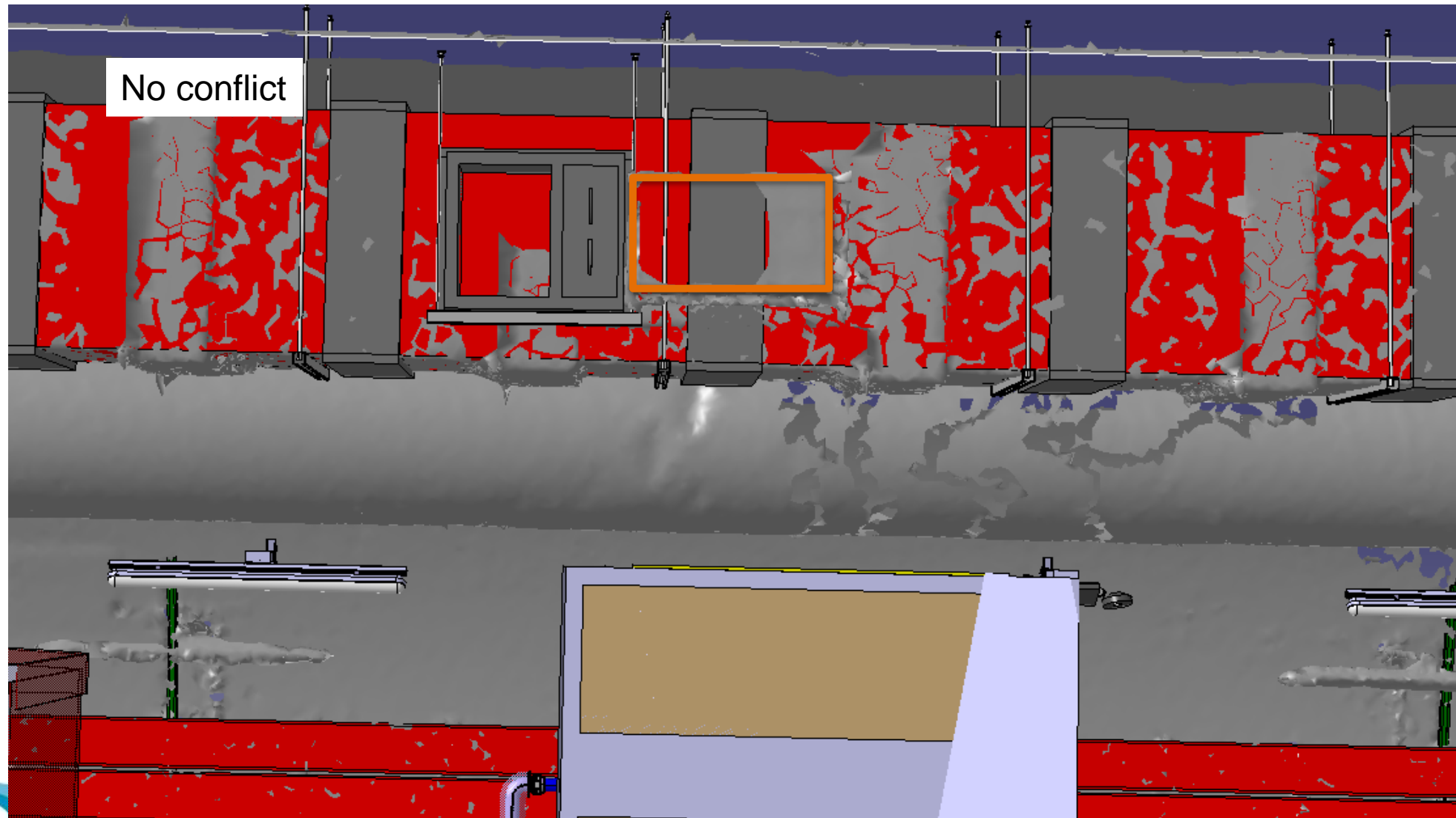


Registre 19A

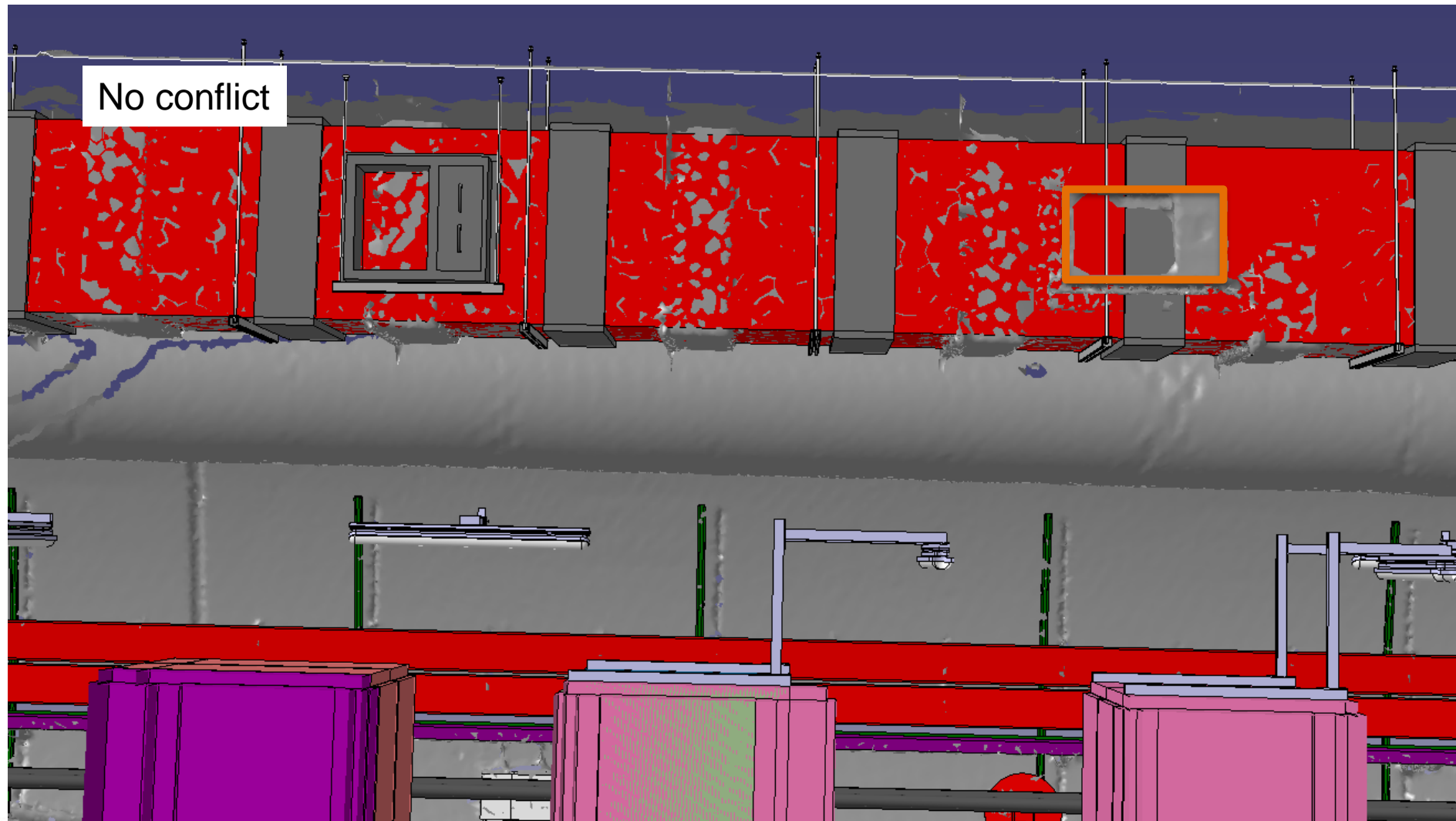


No conflict

Registre 1B



Registre 2B



Registre 3B



Registre 4B



Registre 5B

No conflict

