

Developing a Zenodo Jupyter Lab Extension

Michael Zengel

25-07-2024

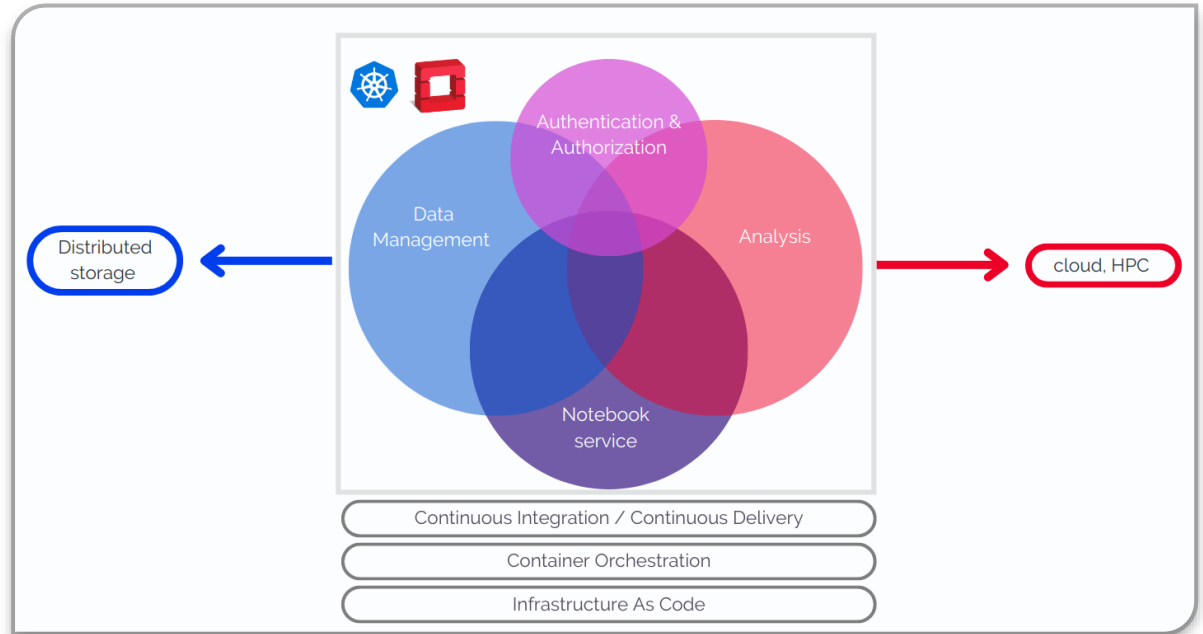
Motivation

Grand Purpose of VRE

- Virtual Research Environment (VRE): simplify life for physicists by combining software in one place

This Project

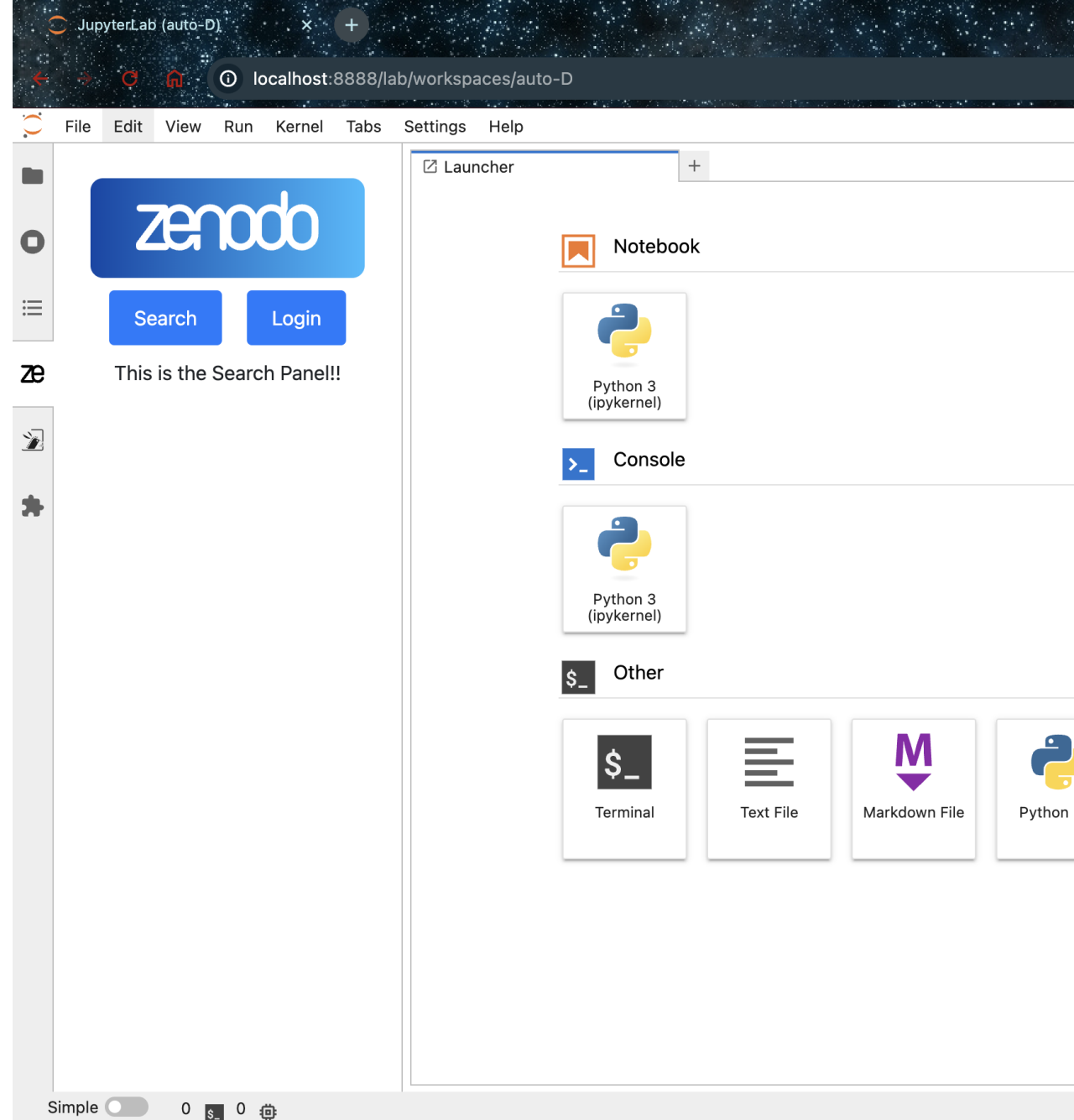
- Zenodo: Open-source database software for sharing results/code
- Goal: Incorporate into Jupyter Lab (widely used coding software)
 - Increases speed and ease of downloading and uploading data
 - Removes need to separately access Zenodo via either web client or command line interface (CLI)



Jupyter Lab Interface

Initial Design (Last Presentation)

- Side panel design with separate screens for logging in to Zenodo API and for searching records



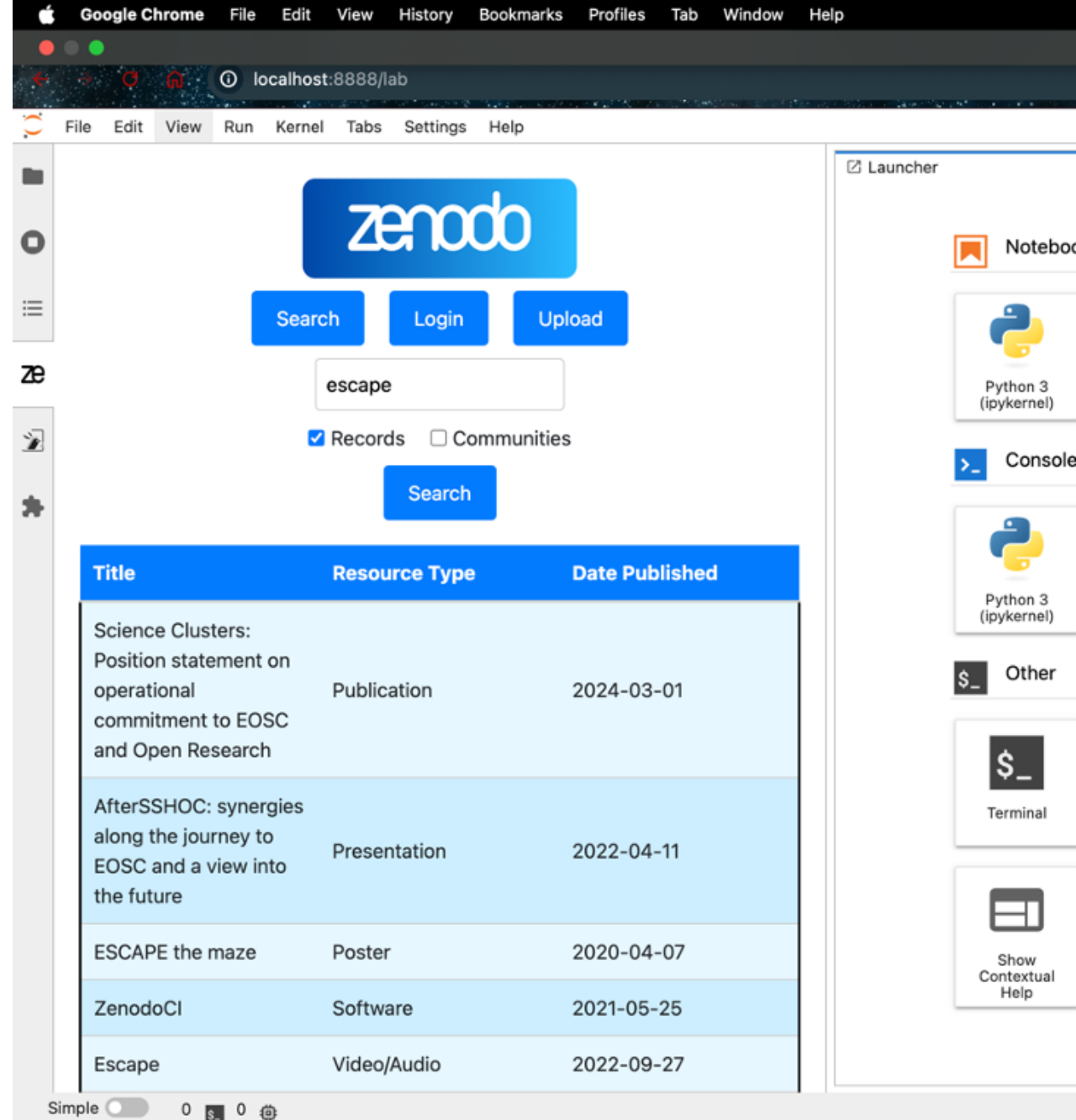
Jupyter Lab Interface

Initial Design (Last Presentation)

- Side panel design with separate screens for logging in to Zenodo API and for searching records

Search Feature (Since Last Presentation)

- Search Functionality of records



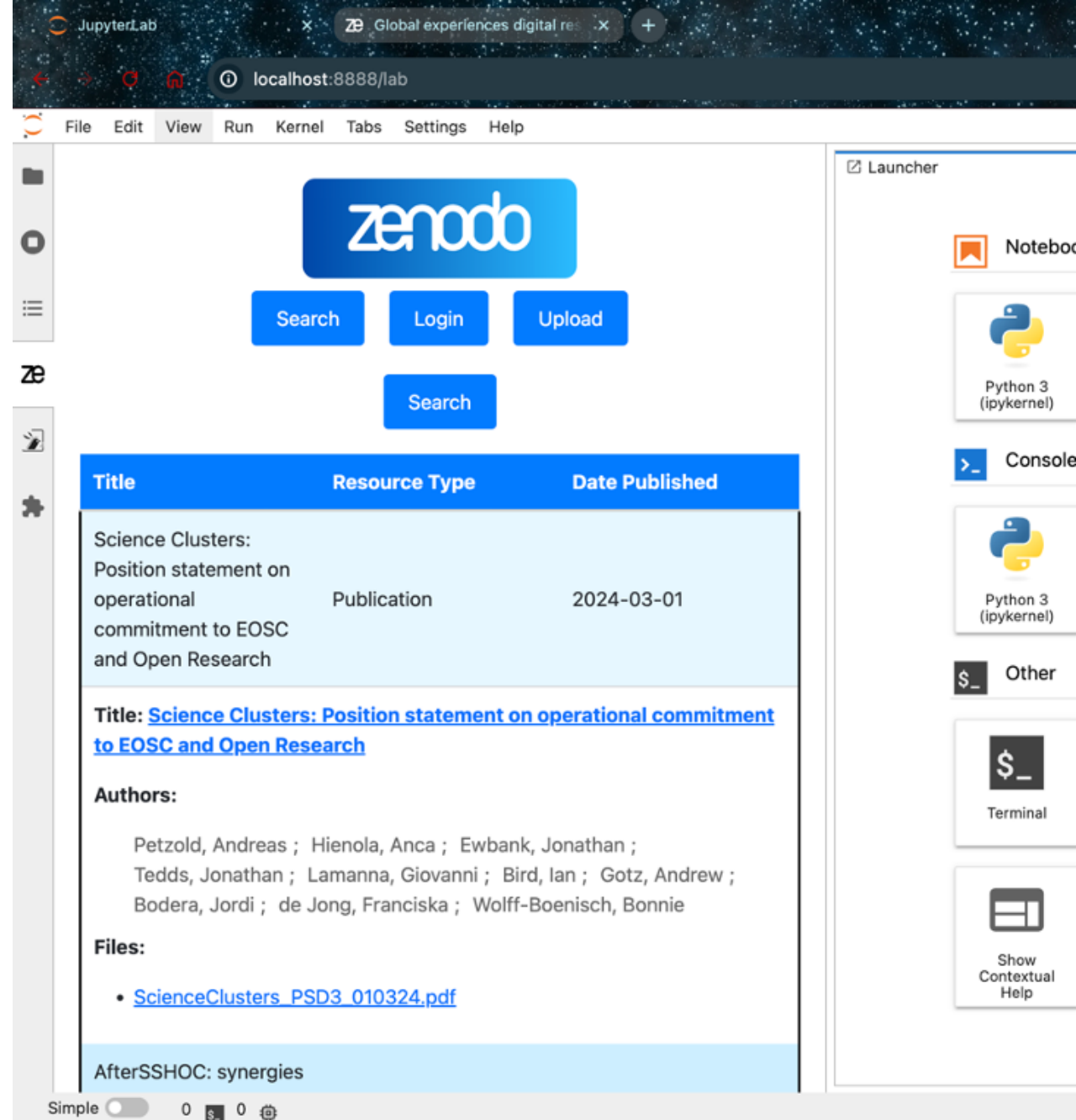
Jupyter Lab Interface

Initial Design (Last Presentation)

- Side panel design with separate screens for logging in to Zenodo API and for searching records

Search Feature (Since Last Presentation)

- Search Functionality of records
- Record Information Display



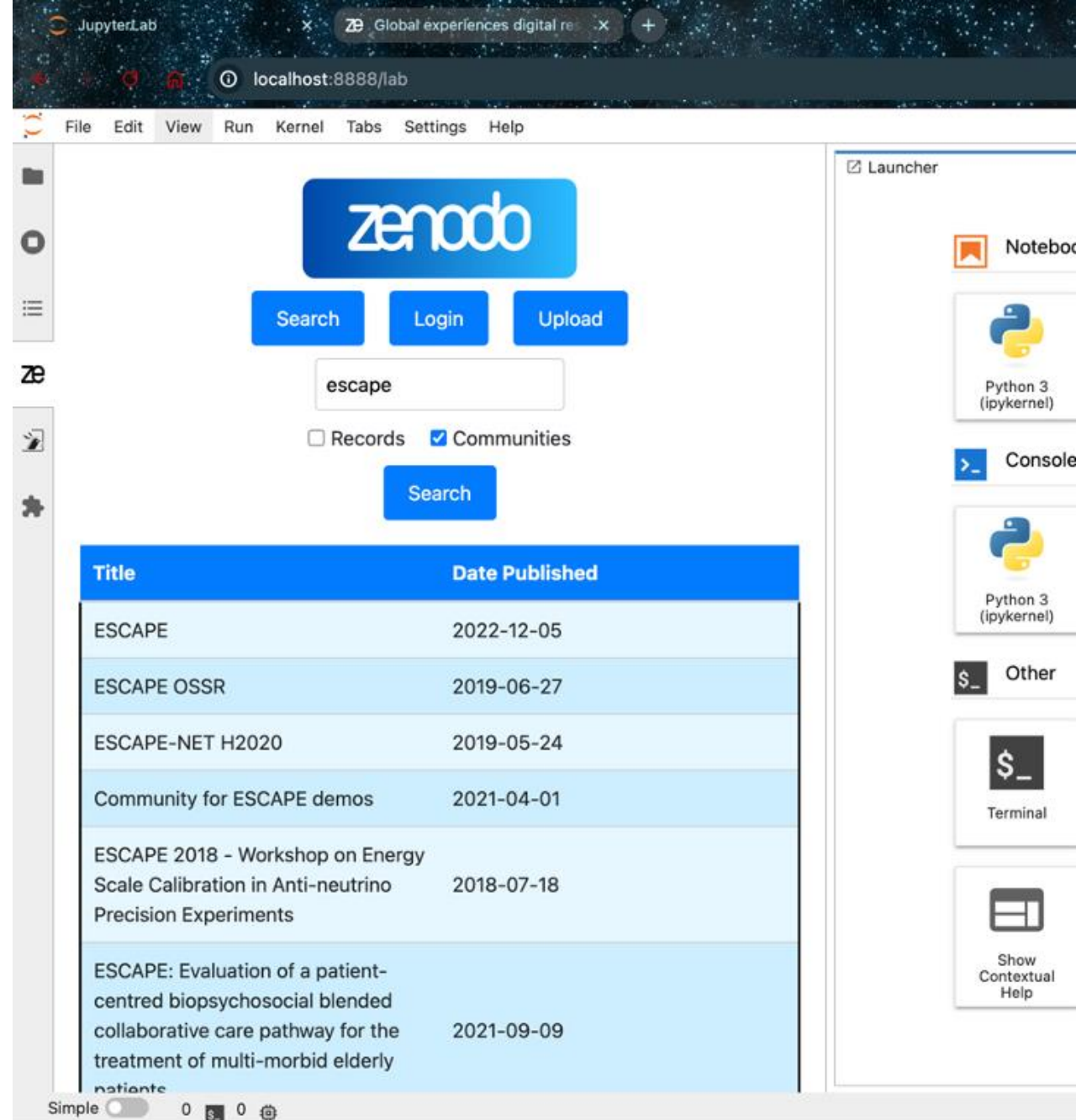
Jupyter Lab Interface

Initial Design (Last Presentation)

- Side panel design with separate screens for logging in to Zenodo API and for searching records

Search Feature (Since Last Presentation)

- Search Functionality of records
- Record Information Display
- Searchable Communities



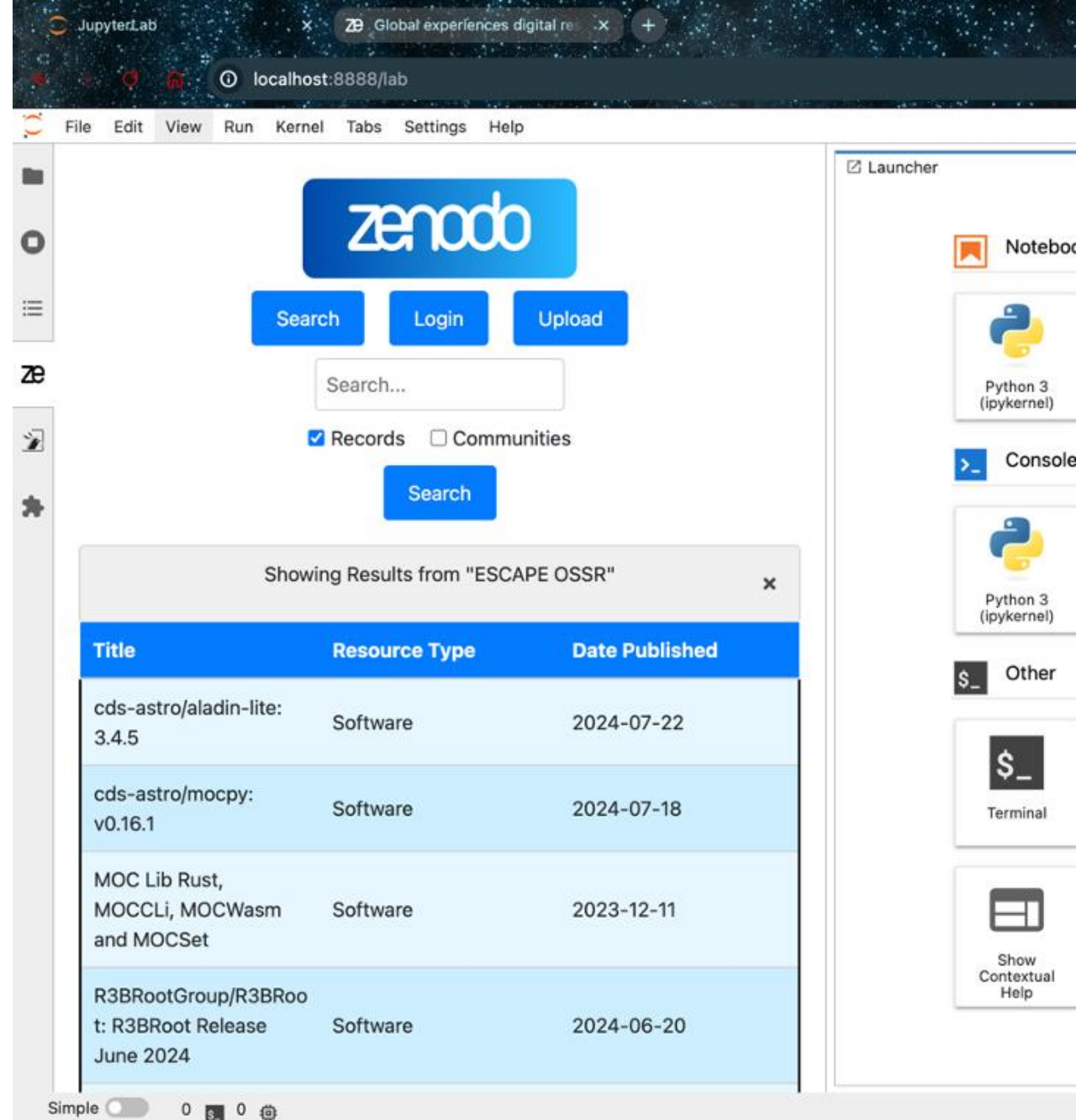
Jupyter Lab Interface

Initial Design (Last Presentation)

- Side panel design with separate screens for logging in to Zenodo API and for searching records

Search Feature (Since Last Presentation)

- Search Functionality of records
- Record Information Display
- Searchable Communities
- Search Records within communities



Jupyter Lab Interface

Initial Design (Last Presentation)

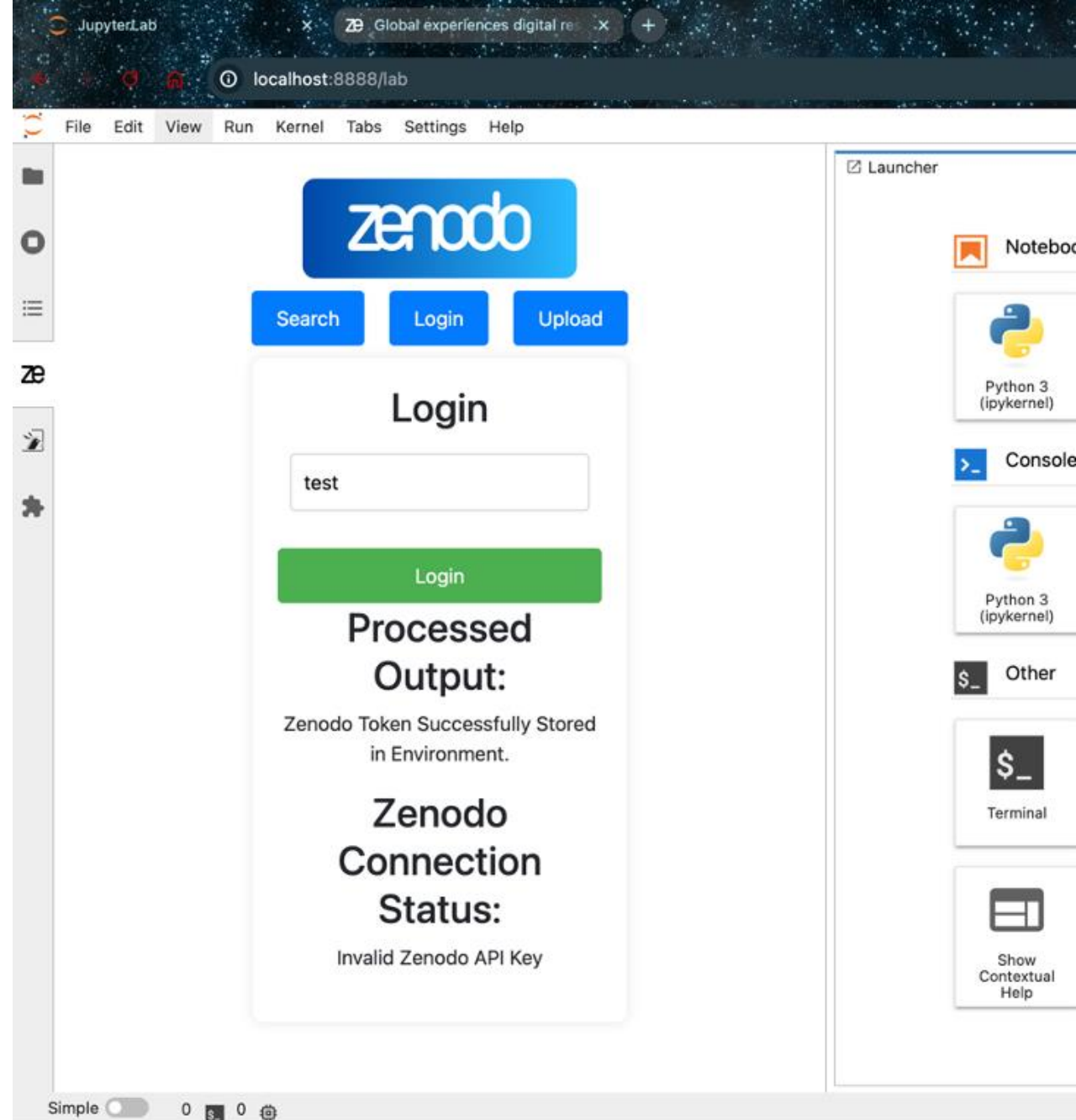
- Side panel design with separate screens for logging in to Zenodo API and for searching records

Search Feature (Since Last Presentation)

- Search Functionality of records
- Record Information Display
- Searchable Communities
- Search Records within communities

Login Feature (Since Last Presentation)

- Login screen that stores Zenodo API token in environment and test validity



Jupyter Lab Interface

Initial Design (Last Presentation)

- Side panel design with separate screens for logging in to Zenodo API and for searching records

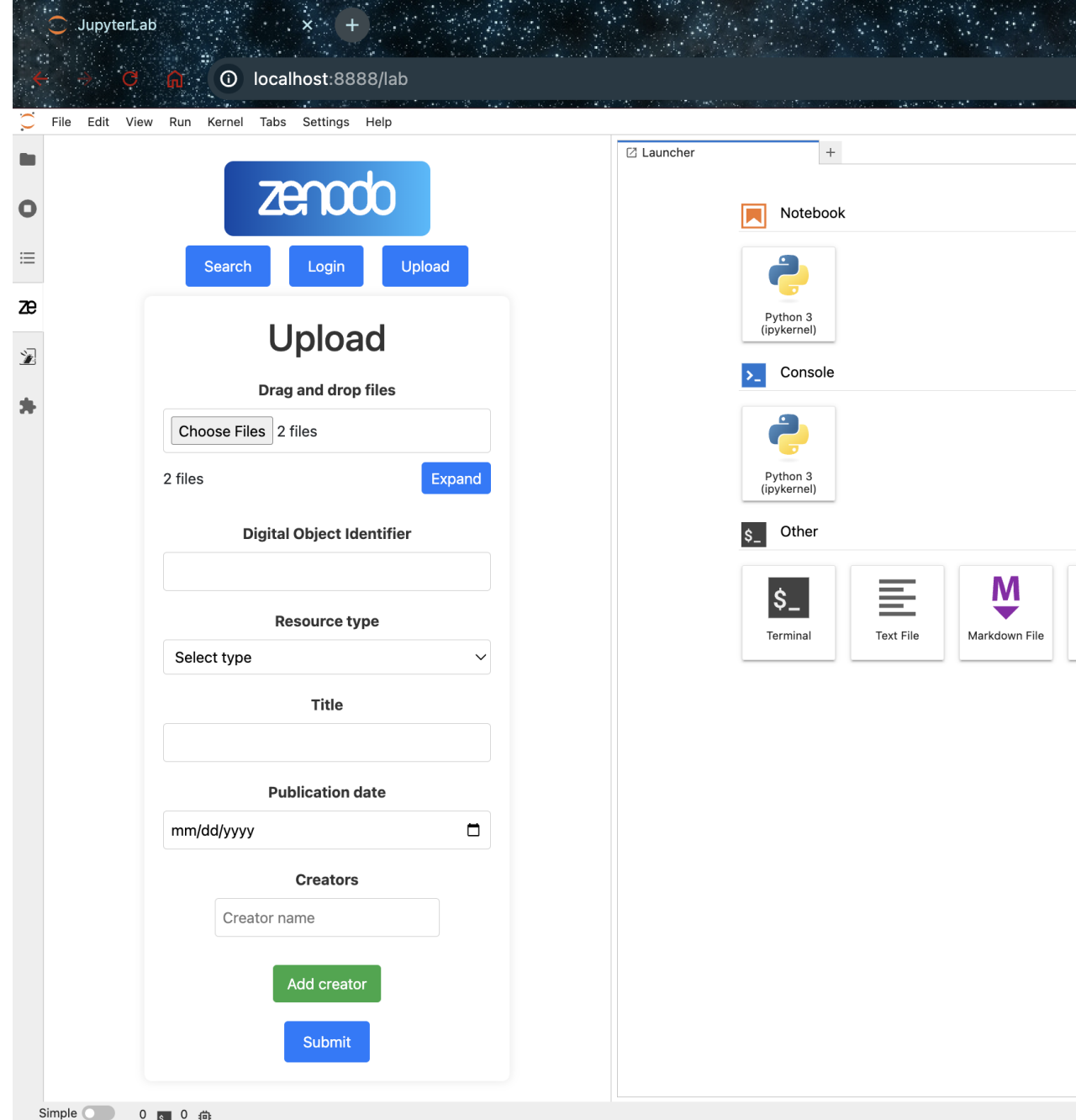
Search Feature (Since Last Presentation)

- Search Functionality of records
- Record Information Display
- Searchable Communities
- Search Records within communities

Login Feature (Since Last Presentation)

- Login screen that stores Zenodo API token in environment and test validity

Upload Feature (TBD)



Other Cool Features

Packaging

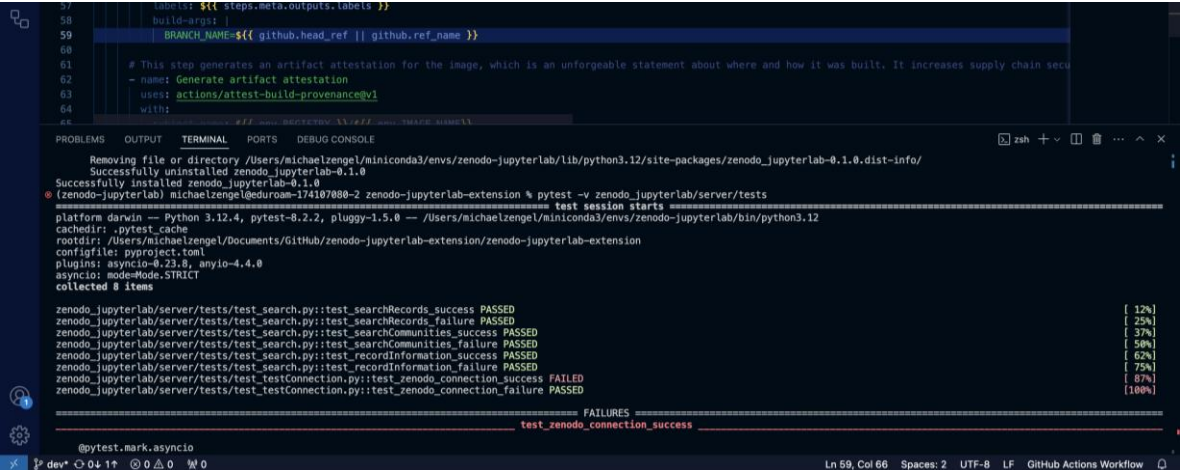
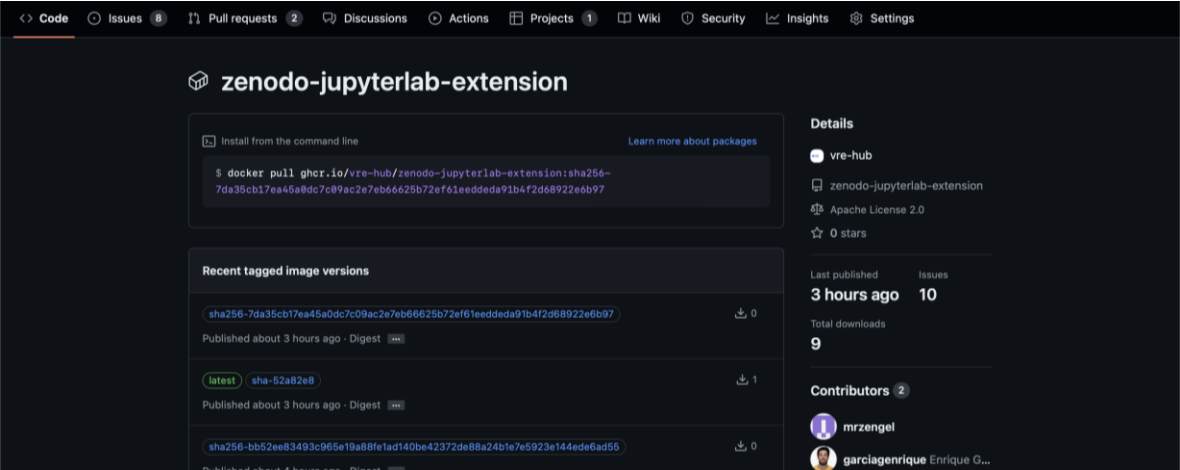
- Easy install packaging with Docker
- Future Plans:
 - Downloadable Python Package
 - Hosted on VRE Jupyter Hub

Unit Testing

- Tests individual functions in python backend

Jupyter Server Extension

- Uses Jupyter Server extension to run python API connection



Why I was gone for a week

