

# MPW4 Test

## DRD3/MPW-CERN-University of Seville

**J. Jiménez-Sánchez<sup>1,2</sup>, F.R Palomo Pinto<sup>1,2</sup>,  
J.M. Hinojo-Montero<sup>1</sup>, F. Muñoz-Chavero<sup>1</sup>**

<sup>1</sup> Electronic Engineering Department, University of Seville (Spain)

<sup>2</sup> CERN

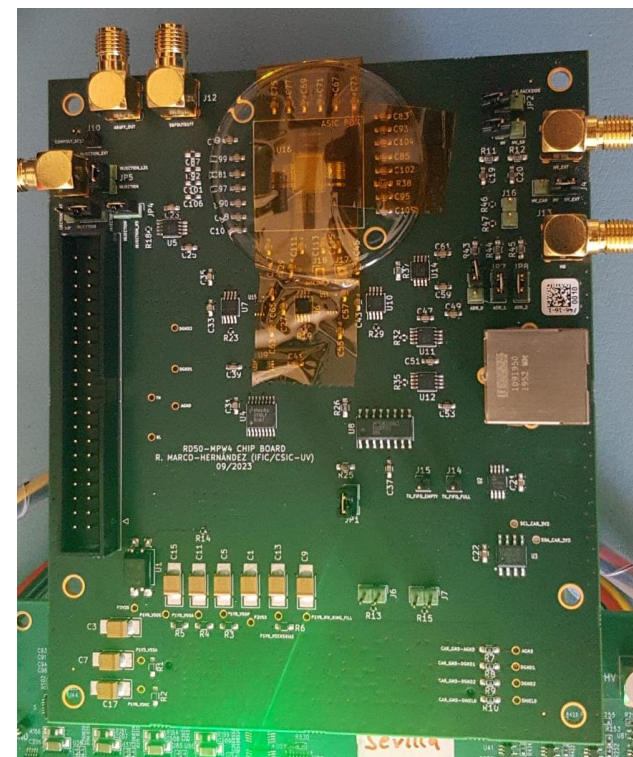
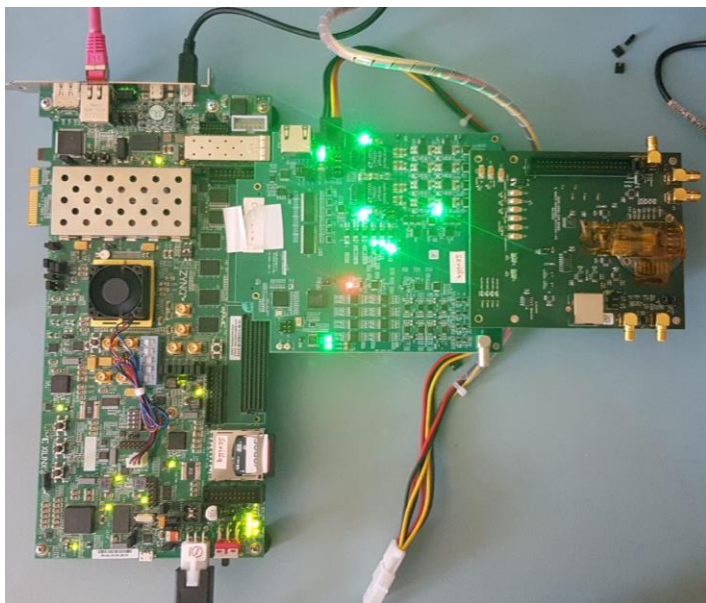
**RD50-CMOS Internal Meeting  
July 11 - 2024**



**DRD3**

## Steps:

1. We have configured the MPW4 board (jumpers)
2. Boot sequence: first Caribou, second FPGA
3. Export LD\_LIBRARY\_PATH  
`export LD_LIBRARY_PATH=$HOME/rd50/mpw4/software/eudaq/lib`
4. Release the Si570 clock for I2C operation  
`echo -n "1-005d" > /sys/bus/i2c/drivers/si570/unbind`



## Steps:

### 5. Pearycli boot in FPGA (use another procedure?)

peary-cli -c config.cfg RD50\_MPW4

```
rogello@rogello-IdeaPad-3-15ITL6: ~  
rogello@rogello-IdeaPad-3-15ITL6: $ ssh root@128.141.325.200  
ssh: Could not resolve hostname 128.141.325.200: Name or service not known  
rogello@rogello-IdeaPad-3-15ITL6: $ ssh root@128.141.325.200  
ssh: Could not resolve hostname 128.141.325.200: Name or service not known  
rogello@rogello-IdeaPad-3-15ITL6:~$ ssh root@128.141.235.200  
Last login: Thu Jul 11 08:08:35 2024  
root@caribou:~# ls  
README.txt clock_config_mpw4.txt config.cfg matrix_mpw4.txt  
root@caribou:~# ls  
README.txt clock_config_mpw4.txt config.cfg matrix_mpw4.txt  
root@caribou:~# export LD_LIBRARY_PATH=$HOME/rd50/mpw4/software/eudaq/lib  
root@caribou:~# echo $LD_LIBRARY_PATH  
/home/root/rd50/mpw4/software/eudaq/lib  
root@caribou:~# ^C  
root@caribou:~# echo -n "1-005d" > /sys/bus/i2c/drivers/si570/unbind  
root@caribou:~# pearycli -c config.cfg RD50_MPW4
```

```
rogello@rogello-IdeaPad-3-15ITL6: ~  
ssh: Could not resolve hostname 128.141.325.200: Name or service not known  
rogello@rogello-IdeaPad-3-15ITL6:~$ ssh root@128.141.235.200  
Last login: Thu Jul 11 08:08:35 2024  
root@caribou:~# ls  
README.txt clock_config_mpw4.txt config.cfg matrix_mpw4.txt  
root@caribou:~# ls  
README.txt clock_config_mpw4.txt config.cfg matrix_mpw4.txt  
root@caribou:~# export LD_LIBRARY_PATH=$HOME/rd50/mpw4/software/eudaq/lib  
root@caribou:~# echo $LD_LIBRARY_PATH  
/home/root/rd50/mpw4/software/eudaq/lib  
root@caribou:~# ^C  
root@caribou:~# echo -n "1-005d" > /sys/bus/i2c/drivers/si570/unbind  
root@caribou:~# pearycli -c config.cfg RD50_MPW4  
[08:13:14.907] (INFO) Creating new instance of device "RD50_MPW4".  
[08:13:14.909] (STATUS) New Caribou device instance, version peary v0.11.0+142^  
g51bae6f1  
[08:13:14.909] (STATUS) This device is managed through the device manager.  
[08:13:14.910] (STATUS) Firmware version: 0x0000ffff (0/0/2000 15:63:63)  
[08:13:14.910] (STATUS) Board ID: 13 Board Revision: 0x01  
[08:13:14.914] (INFO) Appending instance to device list, device ID 0  
[08:13:14.914] (INFO) Manager returned device ID 0.  
[08:13:14.914] (INFO) Welcome to pearyCLI.  
[08:13:14.915] (INFO) Currently 1 devices configured.  
#
```



## In the wizard:

1. Host: IP FPGA
2. Port: use 12345 or 22?
3. First field: FPGA OS user, Device ID in Peary or Name Device in Peary?

