



**Politecnico
di Torino**

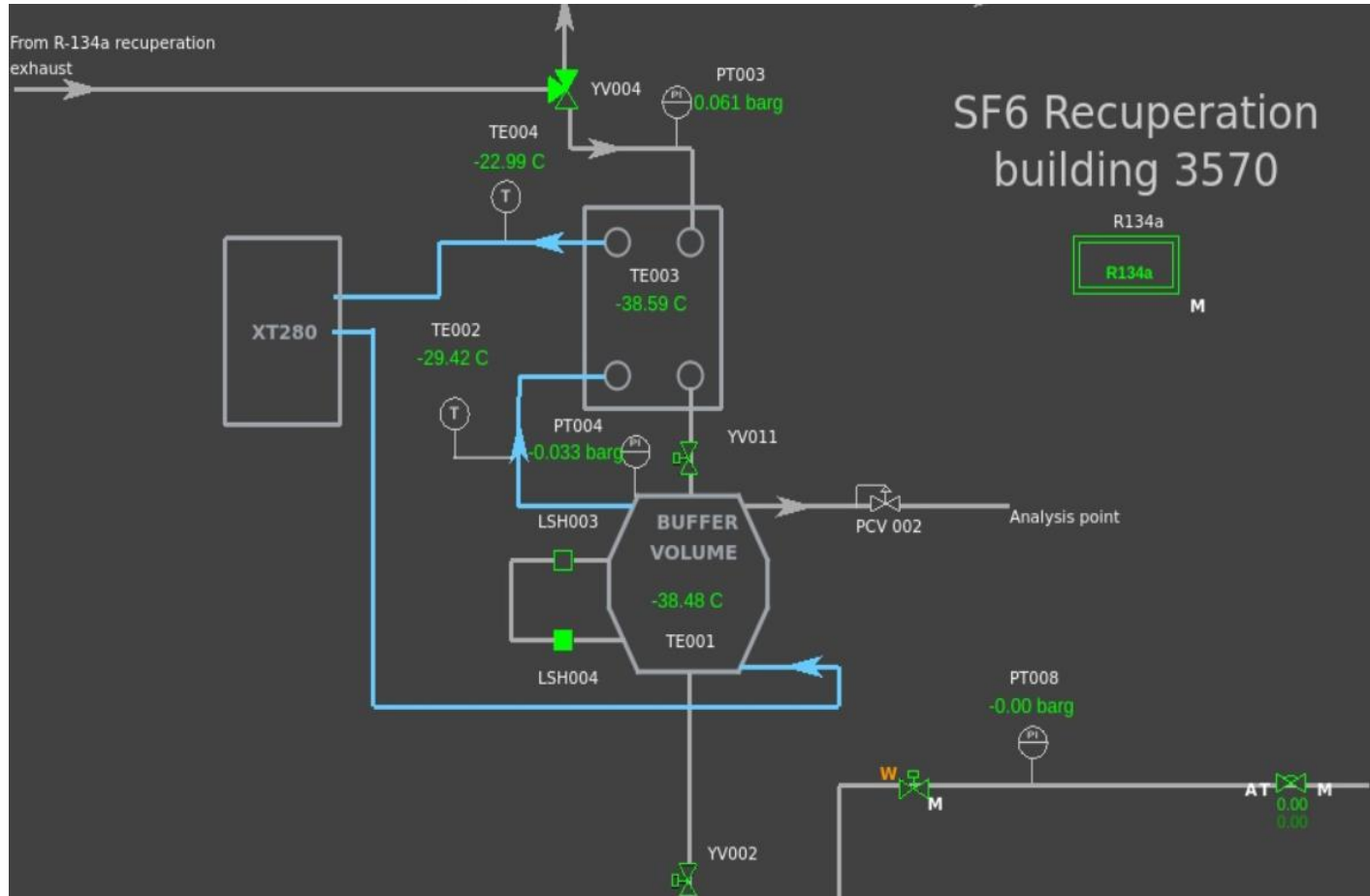


UPDATE: 11/07/2024

**PRESENTER:
AMIN BOUZAIENE**



SF6 RECUPERATION



Parts fixed:

- Exhaust line of the GC separated from the exhaust line of the R134a
- Dead band of sensor corrected

Other intervention needed ?

Mechanical :

While trying to do one analysis with the feed gas intake closed pressure is not sufficient all volume of gas is sucked in one analysis -> need to do analysis when gas intake is opened

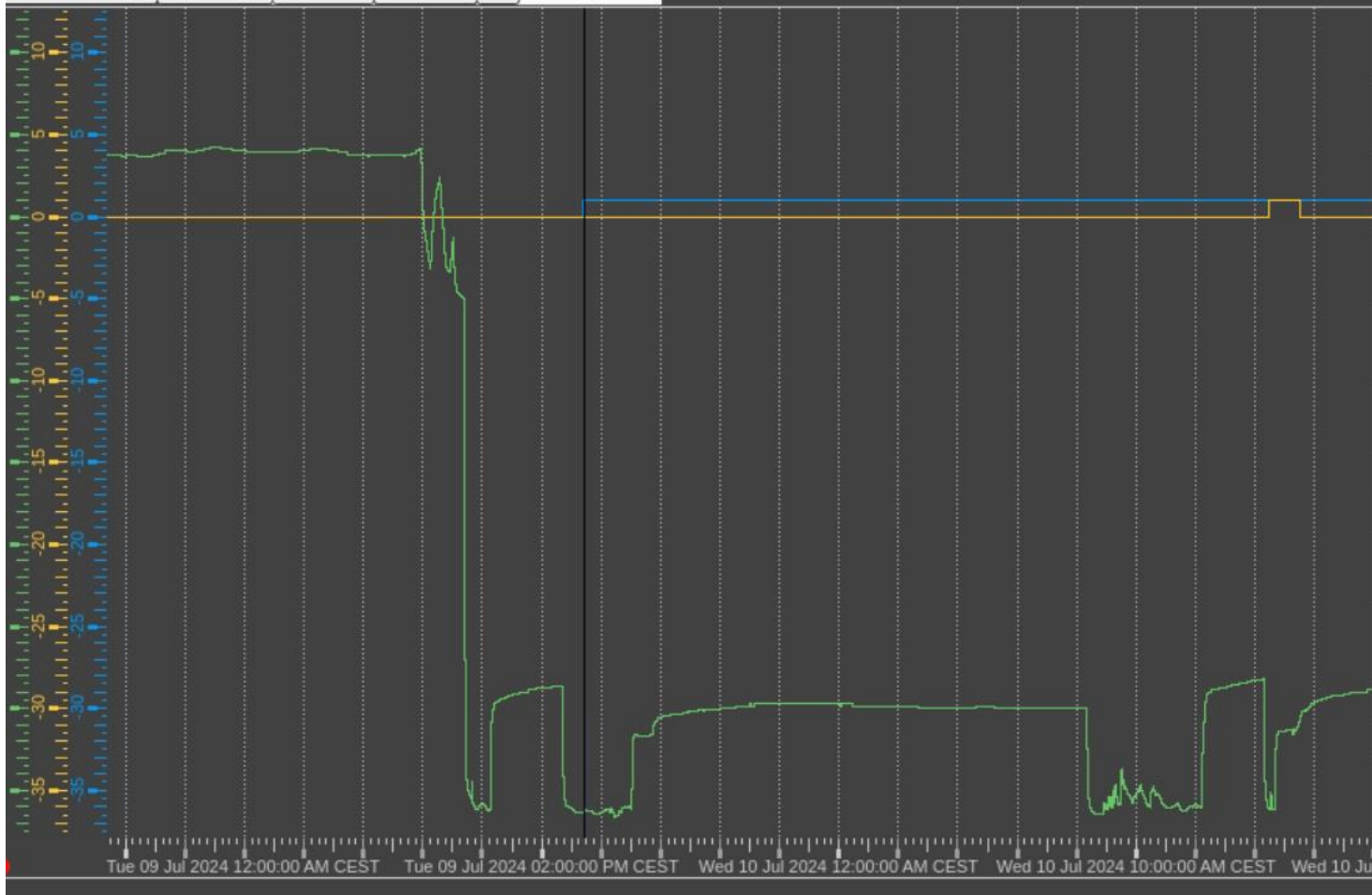
Software:

Detection head reading need to be placed -
> to check with Gianluca



Politecnico
di Torino

SF6 RECUPERATION

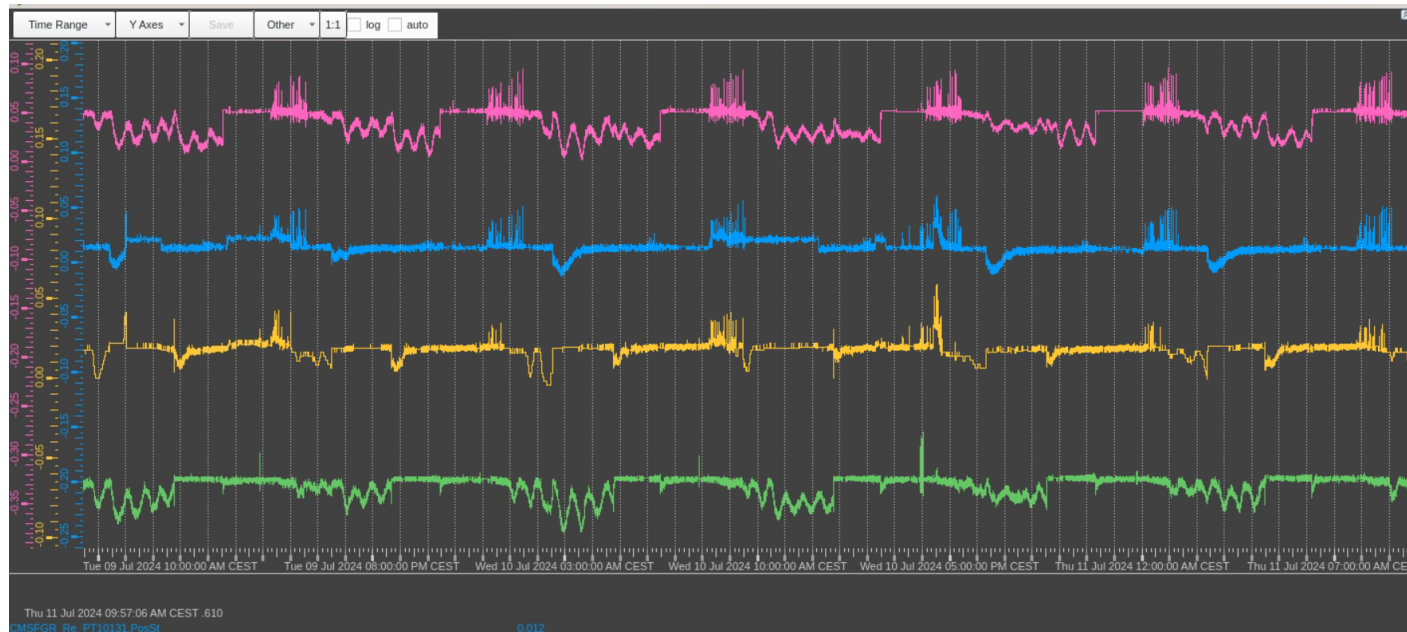


Liquefying time : 8 hours
Lsensor opened after : 2 hours
HL sensor after: 7 hours



Politecnico
di Torino

SF6 RECUPERATION



Pressure of the 4 buffers of the R134a seem stable over the liquifying time of the SF6

