



HSE

Occupational Health & Safety
and Environmental Protection unit



Beamline for Schools (BL4S) **Safety Signs and Alarms**

Presentation to BL4S Students

September 13th 2024

Christoph BALLE
HSE-OHS-PE, Safety Support of Events

CONSIGNE D'URGENCE/ EMERGENCY PROCEDURE

BATIMENT 6 - ETAGE 2 / BUILDING 6 - FLOOR 2

EVACUATION

- A l'audition du signal
When the alarm rings
- Fermez les portes et les fenêtres
Close doors and windows
- Suivez le balisage
Follow the signs
- N'utilisez pas l'ascenseur
Do not use the lift
- Rejoignez le point de rassemblement
Report to the assembly point

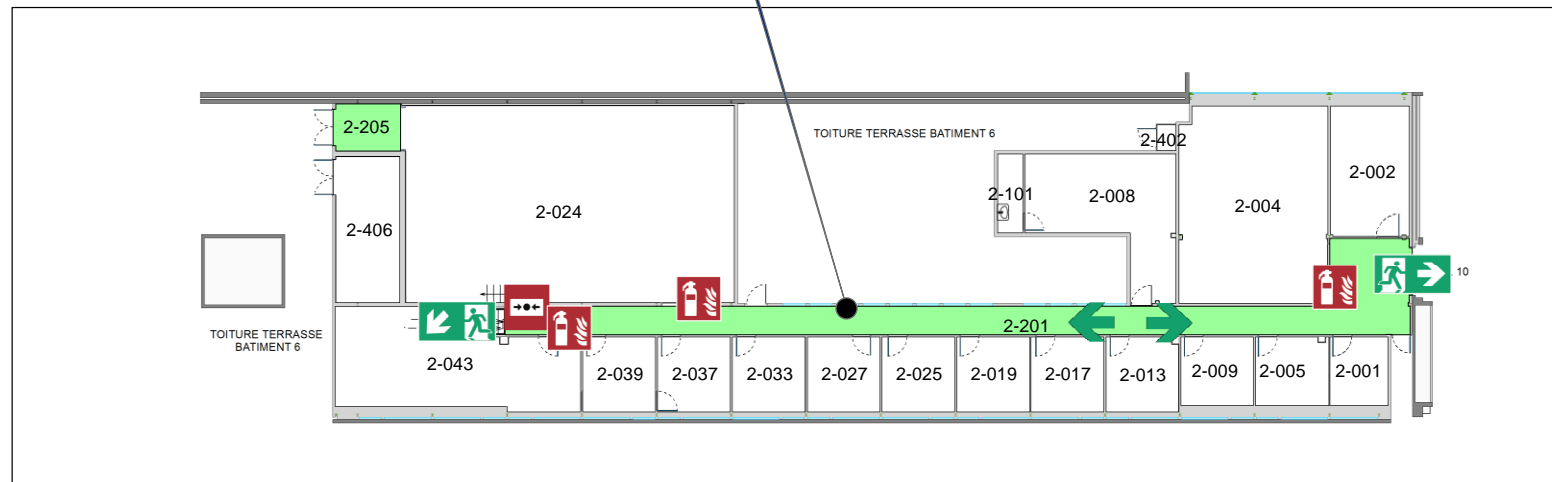


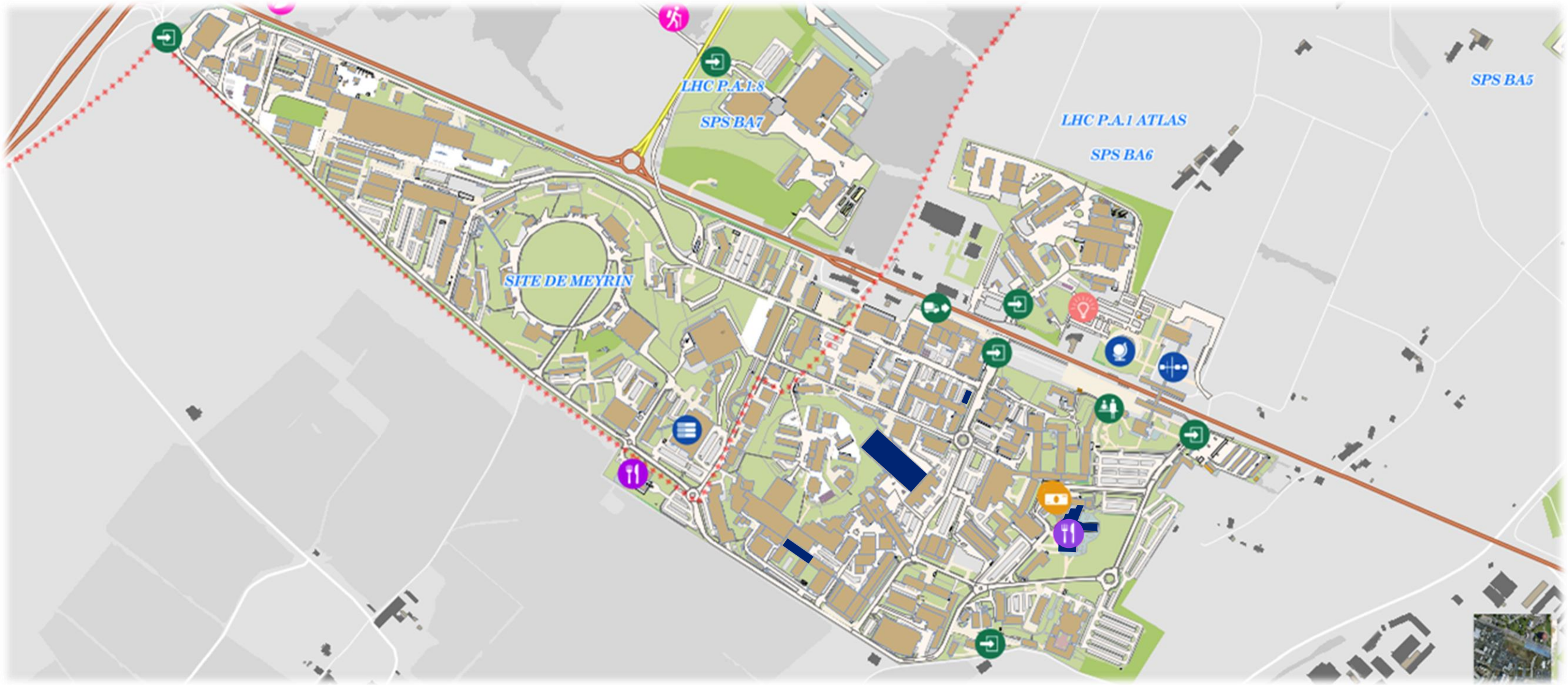
Vous êtes ICI - You are HERE

- Arrêt d'urgence général
General Emergency Stop
- Extincteur
Fire Extinguisher
- Sens d'évacuation
Escape route
- Sortie de secours
Emergency exit
- Alarme d'évacuation
Evacuation Alarm

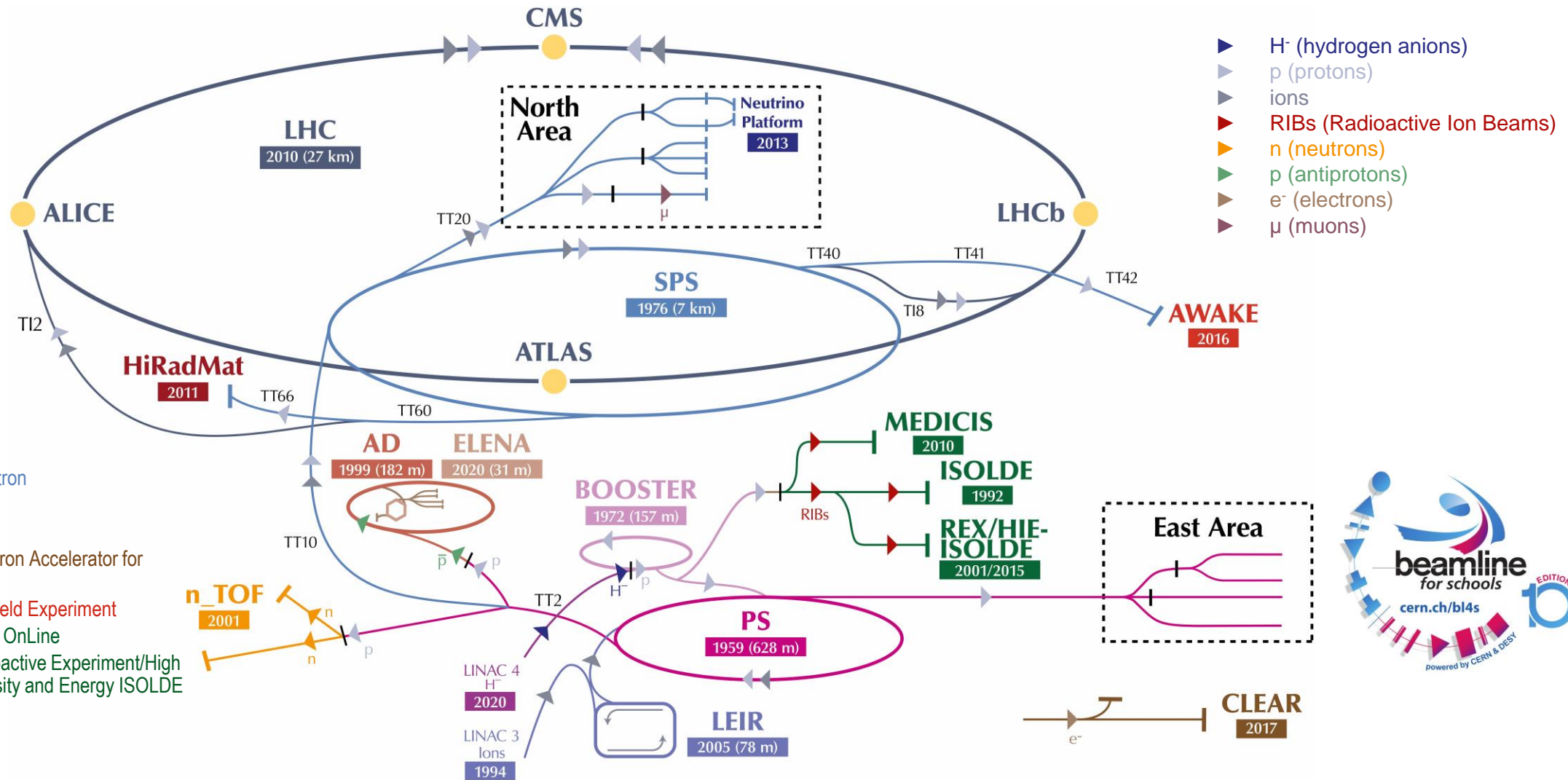
INCENDIE/ FIRE

- 7 44 44**
+41 22 76 74444
- Donnez l'alarme
Set off the alarm
- Prévenez les autres personnes
Inform the others
- Fermez les portes et les fenêtres
Close doors and windows
- N'utilisez pas l'ascenseur
Do not use the lift
- Si possible essayer d'éteindre le feu sans prendre de risques
if possible try to extinguish the fire without taking risks



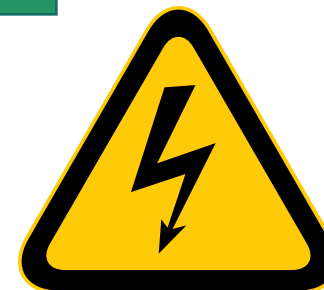


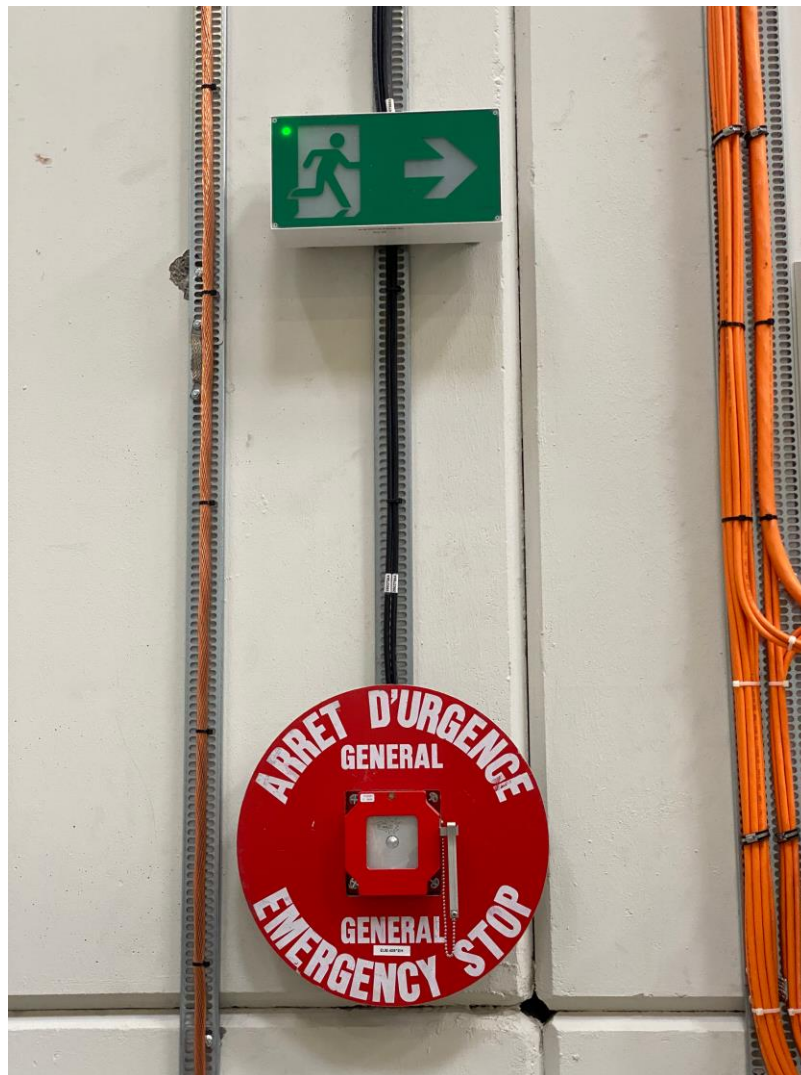
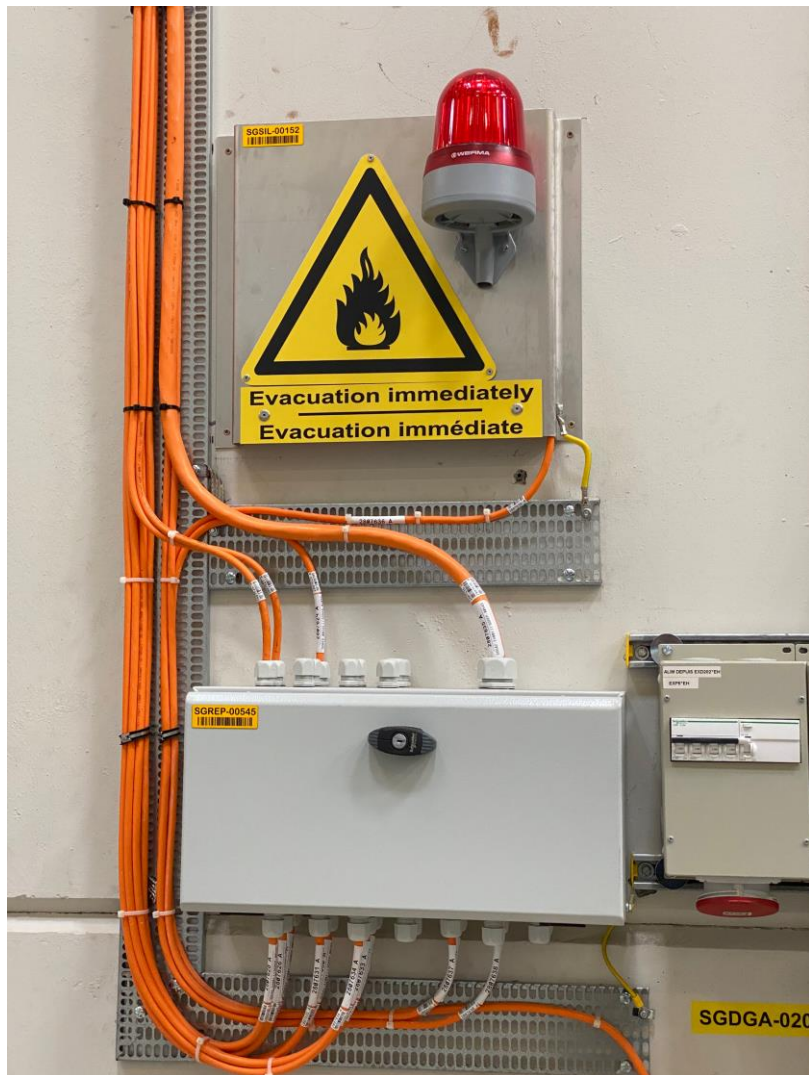




- LHC - Large Hadron Collider
- SPS - Super Proton Synchrotron
- PS - Proton Synchrotron
- AD - Antiproton Decelerator
- CLEAR - CERN Linear Electron Accelerator for Research
- AWAKE - Advanced WAKEfield Experiment
- ISOLDE - Isotope Separator OnLine
- REX/HIE-ISOLDE - Radioactive Experiment/High Intensity and Energy ISOLDE
- MEDICIS
- LEIR - Low Energy Ion Ring
- LINAC - LINear Accelerator
- n_TOF - Neutrons Time Of Flight
- HiRadMat - High-Radiation to Materials
- Neutrino Platform







What I don't know
I don't touch

