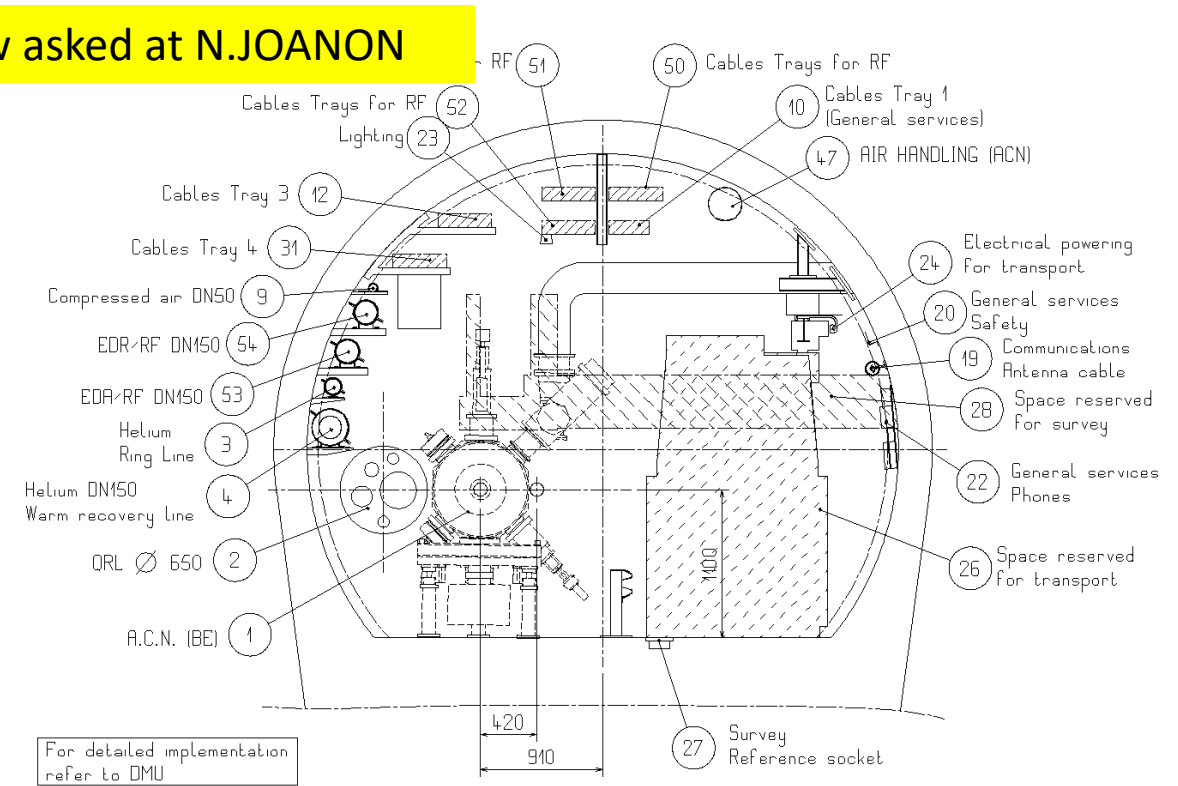
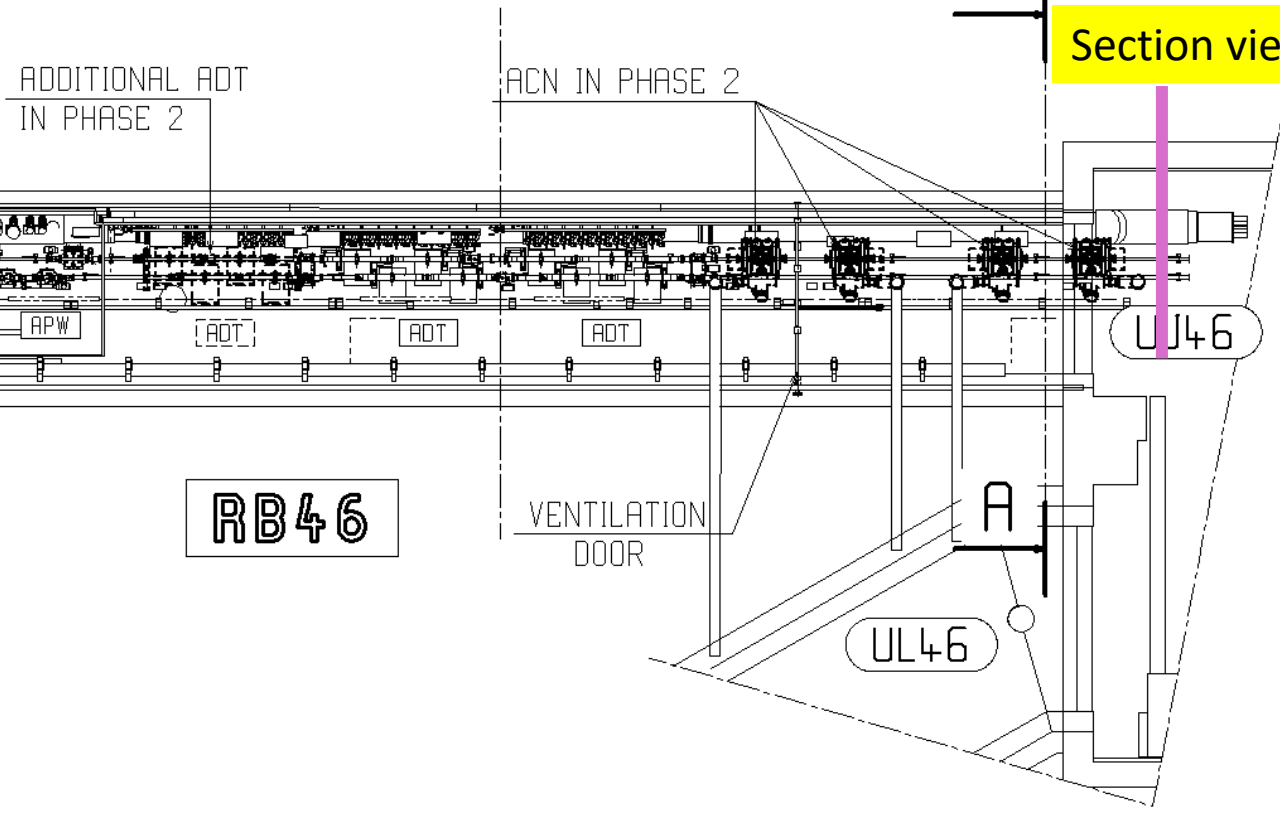
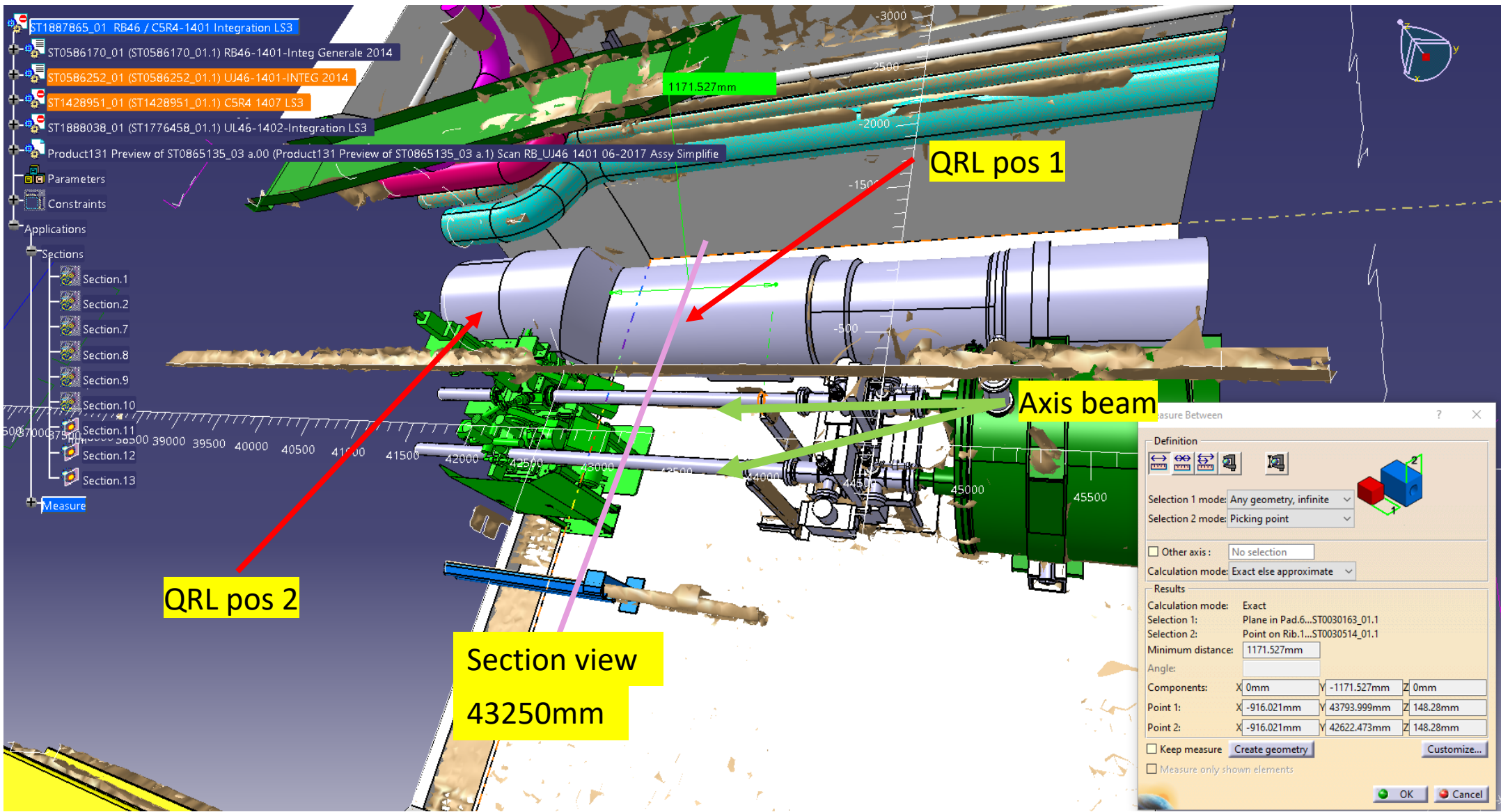


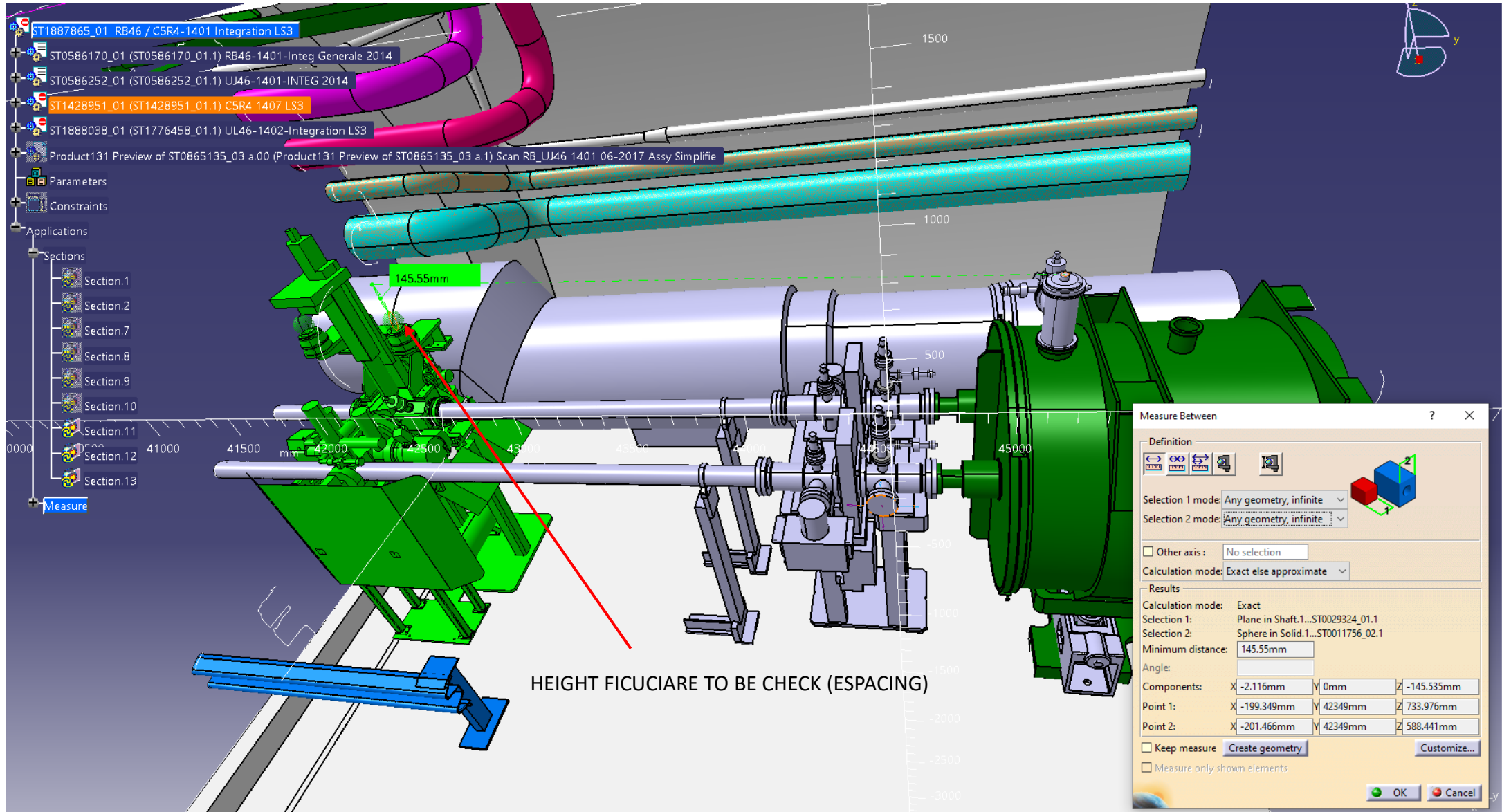
Section view asked at N.JOANON

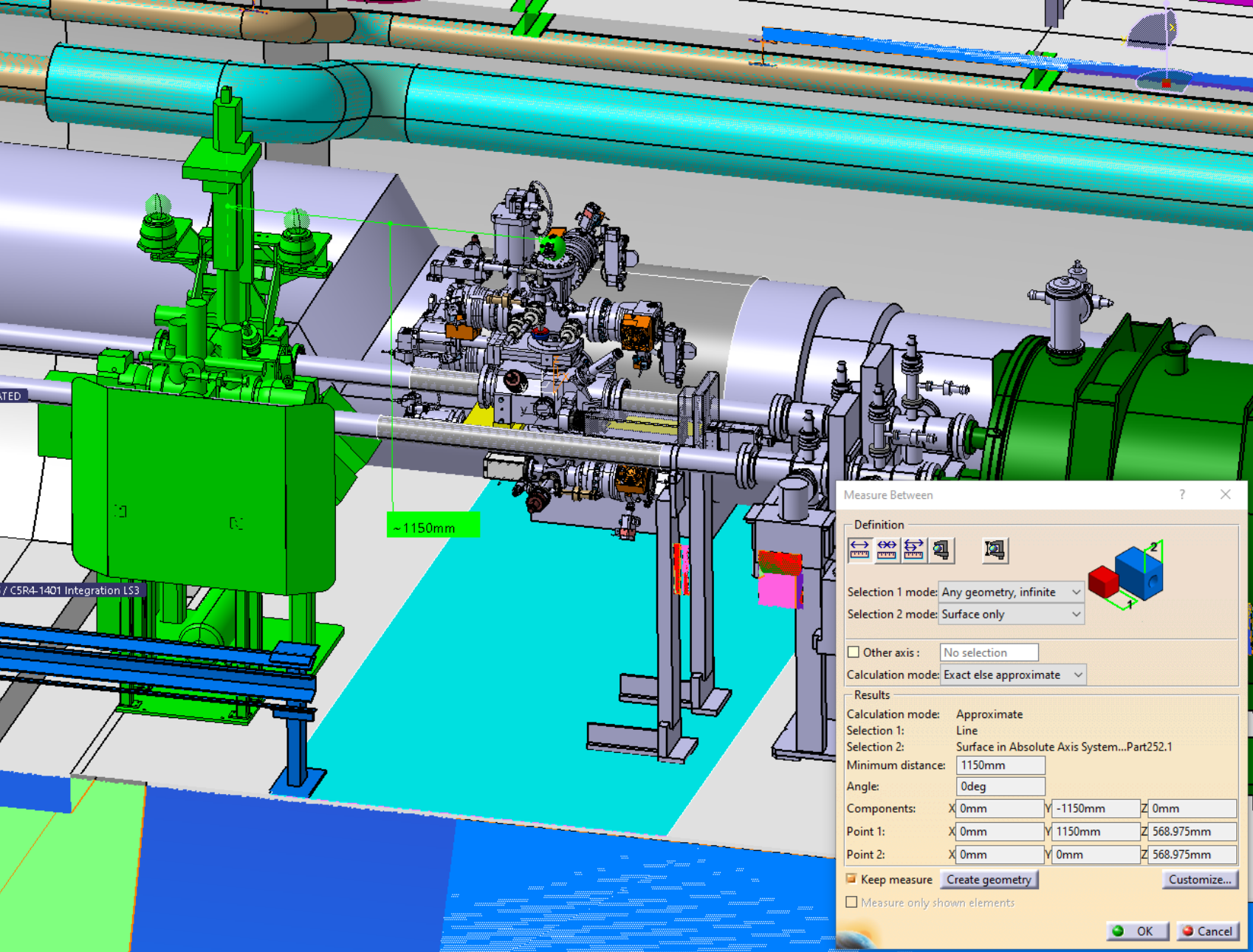


LHCLJ 4U0009

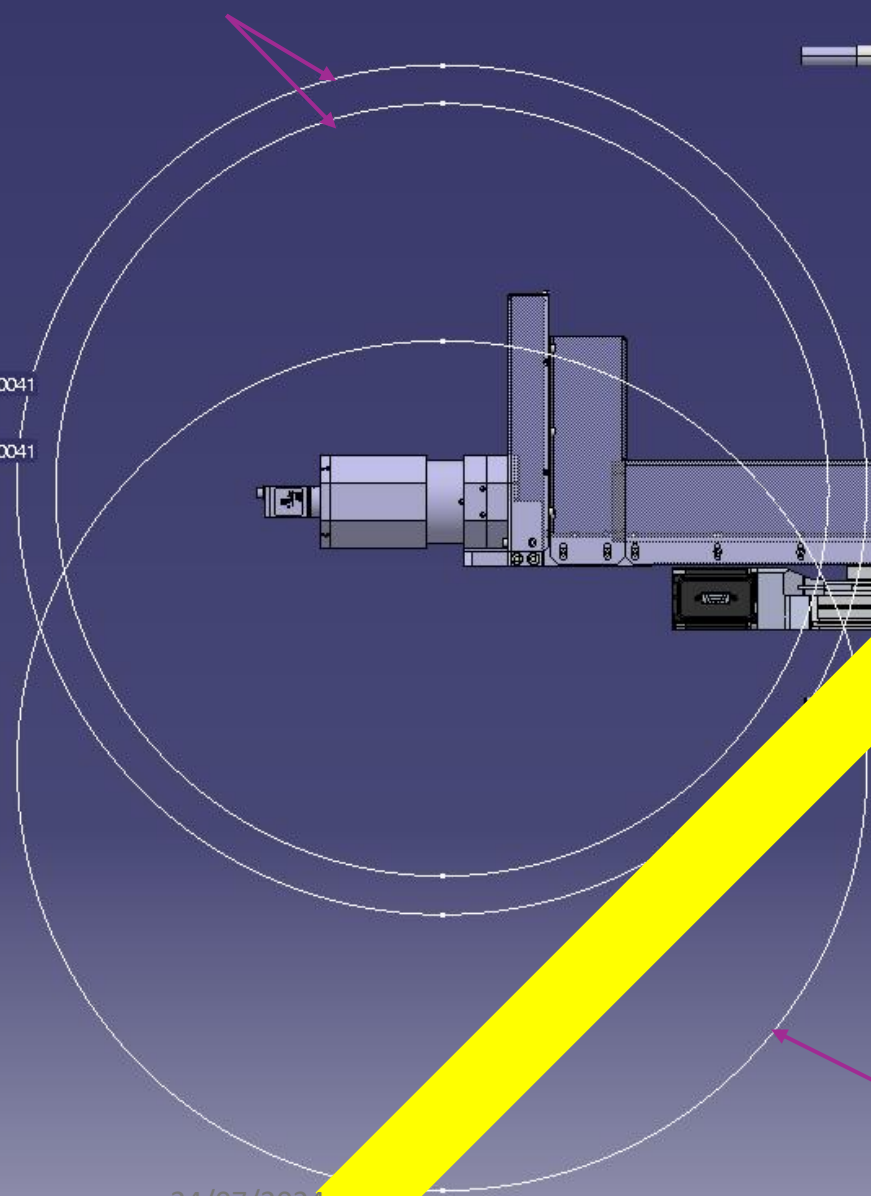
Installation Layouts at Point 4, 3D Integration		EHELLE SCALE 1:20	DES/DRA.	C. MAGNIER	2003-09-01
TUNNEL RB46 TOP VIEW AND SECTIONS TUNNEL RB46 VUE DE DESSUS ET COUPES			CONTROLLED	Y. MUTTONI	2007-09-04
		RELEASED	S. CHEMLI	2007-09-07	
		APPROVED	-	-	
LHCLJ_LJ_4U_3DINTP4-000_L030_L0302113PL					
REPLACE/REPLACES					
CERN	RELEASED BY	FOR	QAC	SIZE	IND.
	PROJECT ENGINEER	INFORMATION	-		
LHCLJ_4U0009				0	C



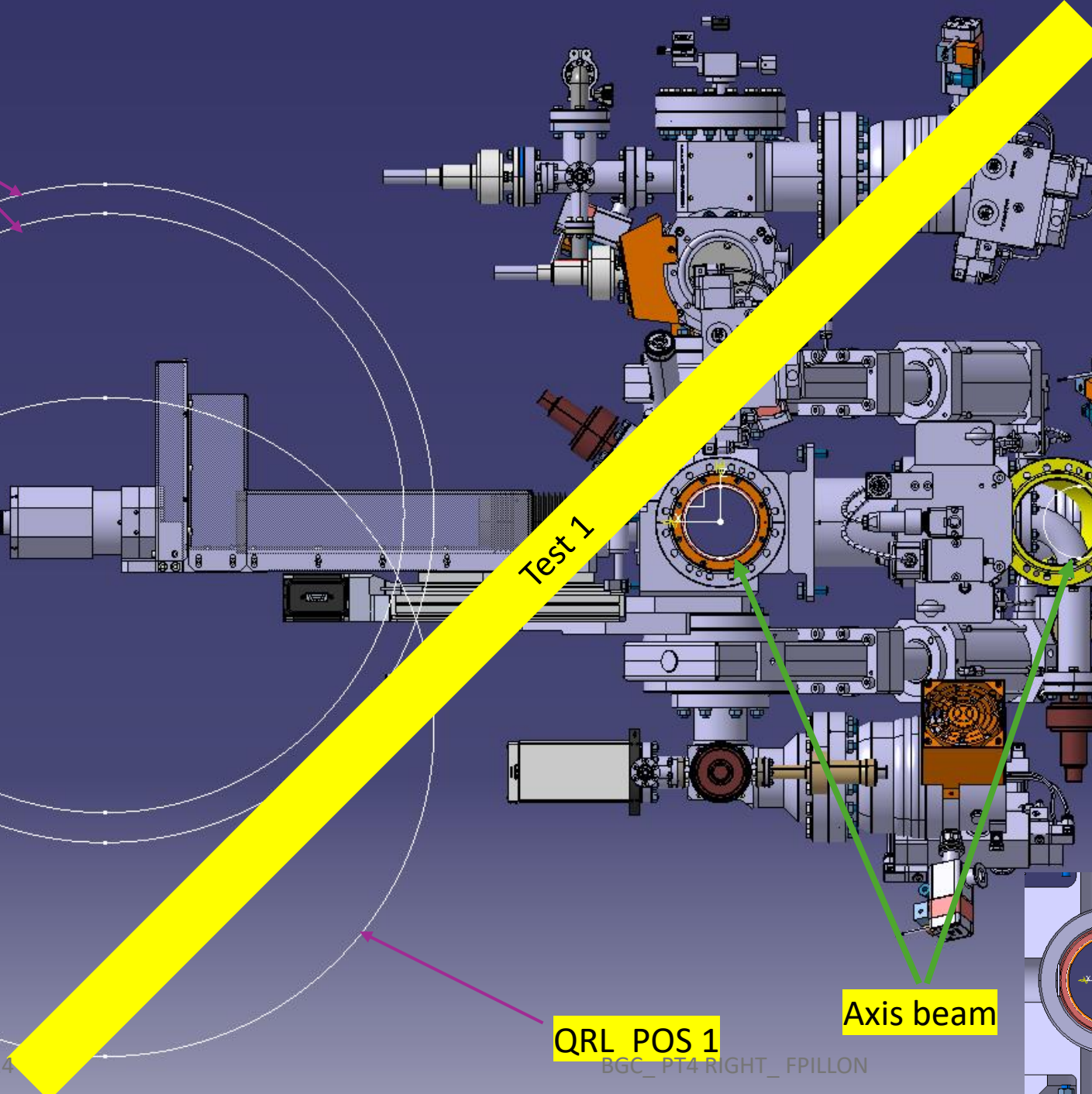




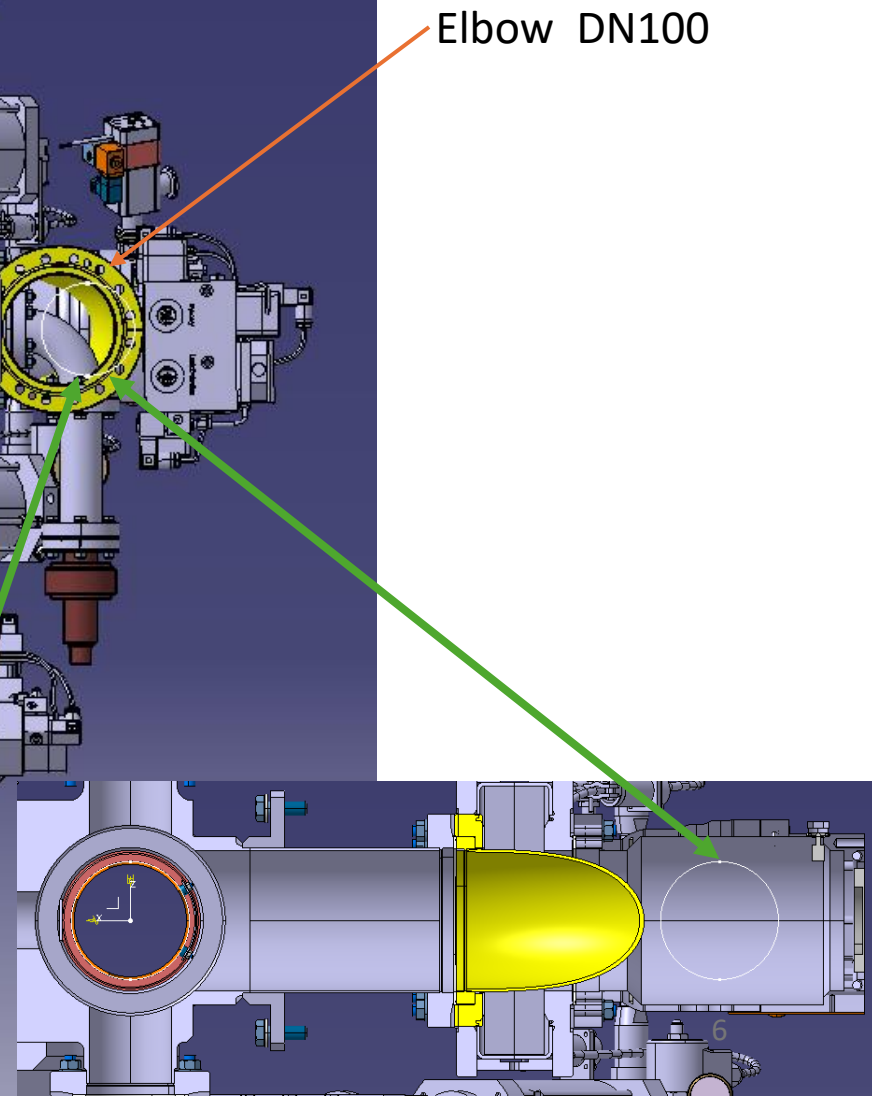
QRL POS 2



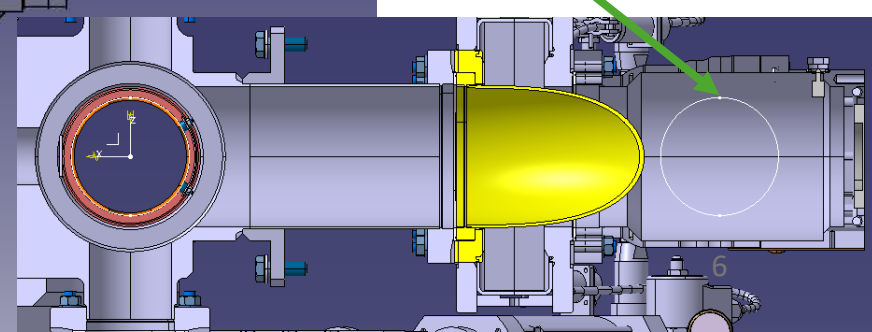
Test 1



Elbow DN100



Axis beam



QRL POS 1

24/07/2024

BGC_PT4 RIGHT_FPILLON

6

QRL POS 2

Elbow DN100

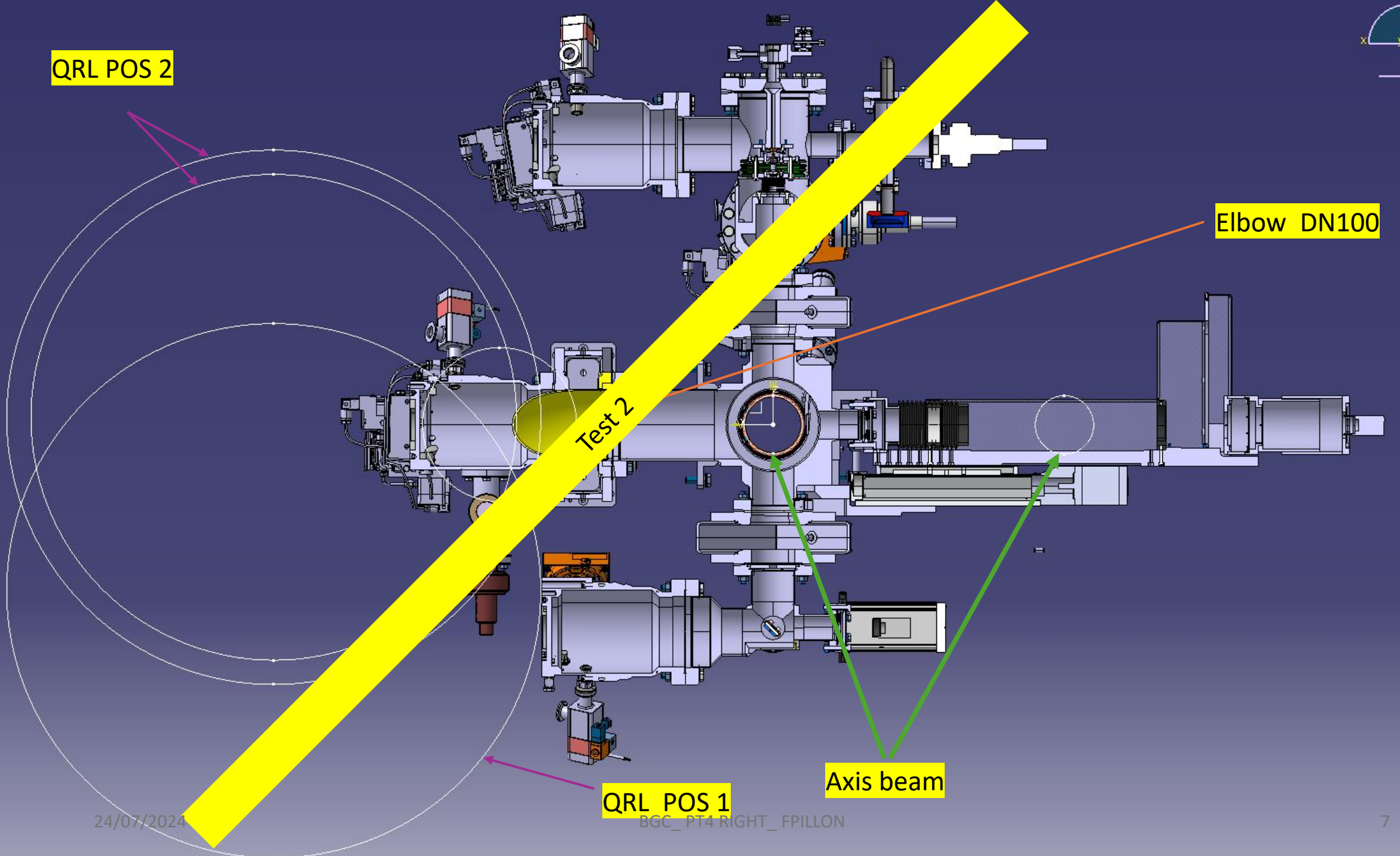
Test 2

Axis beam

QRL POS 1

24/07/2024

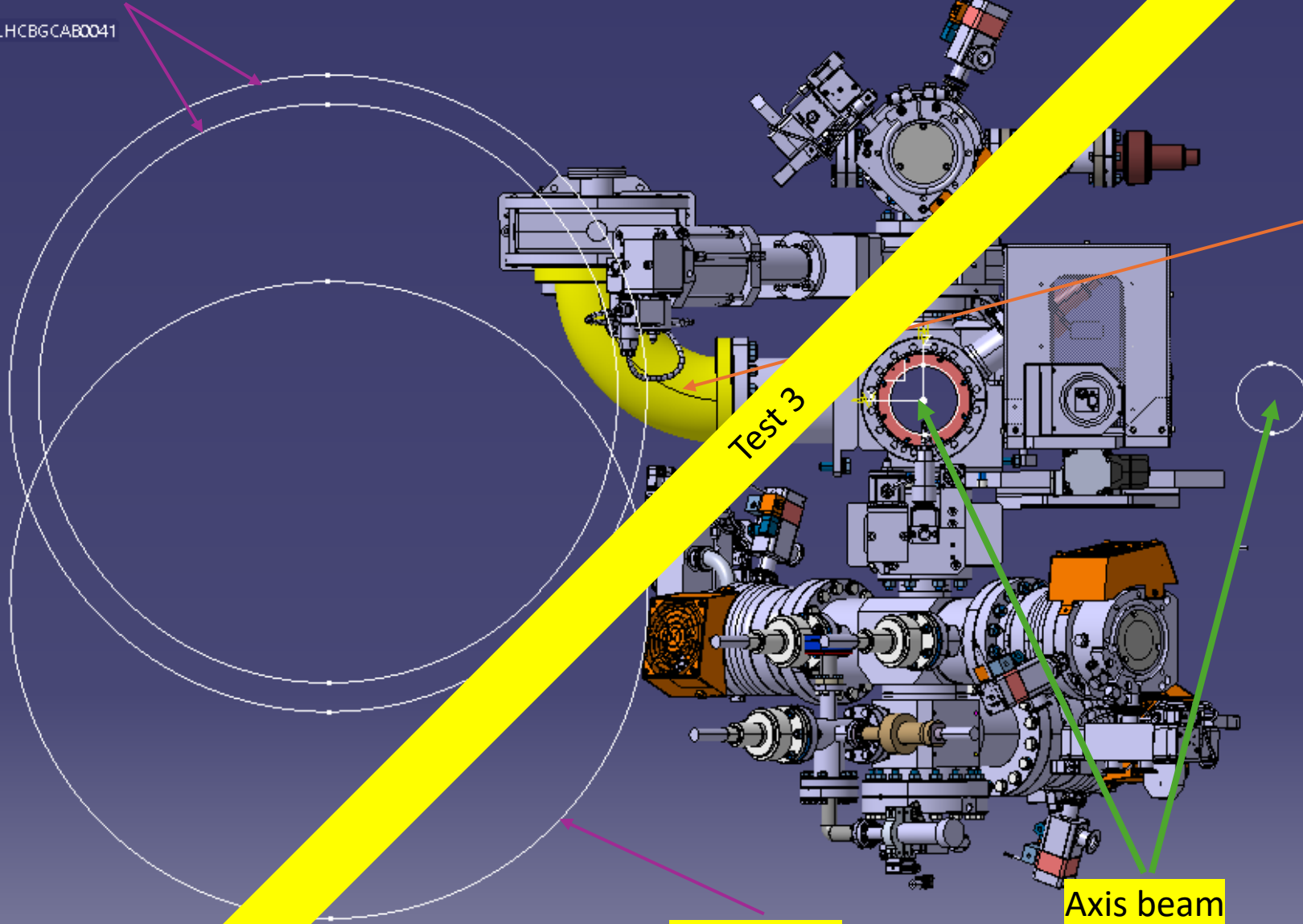
BGC_PT4 RIGHT_FPILLON



QRL POS 2

ASSEMBLY LHC BG CAB0041

ASSEMBLY LHC BG CAB0041



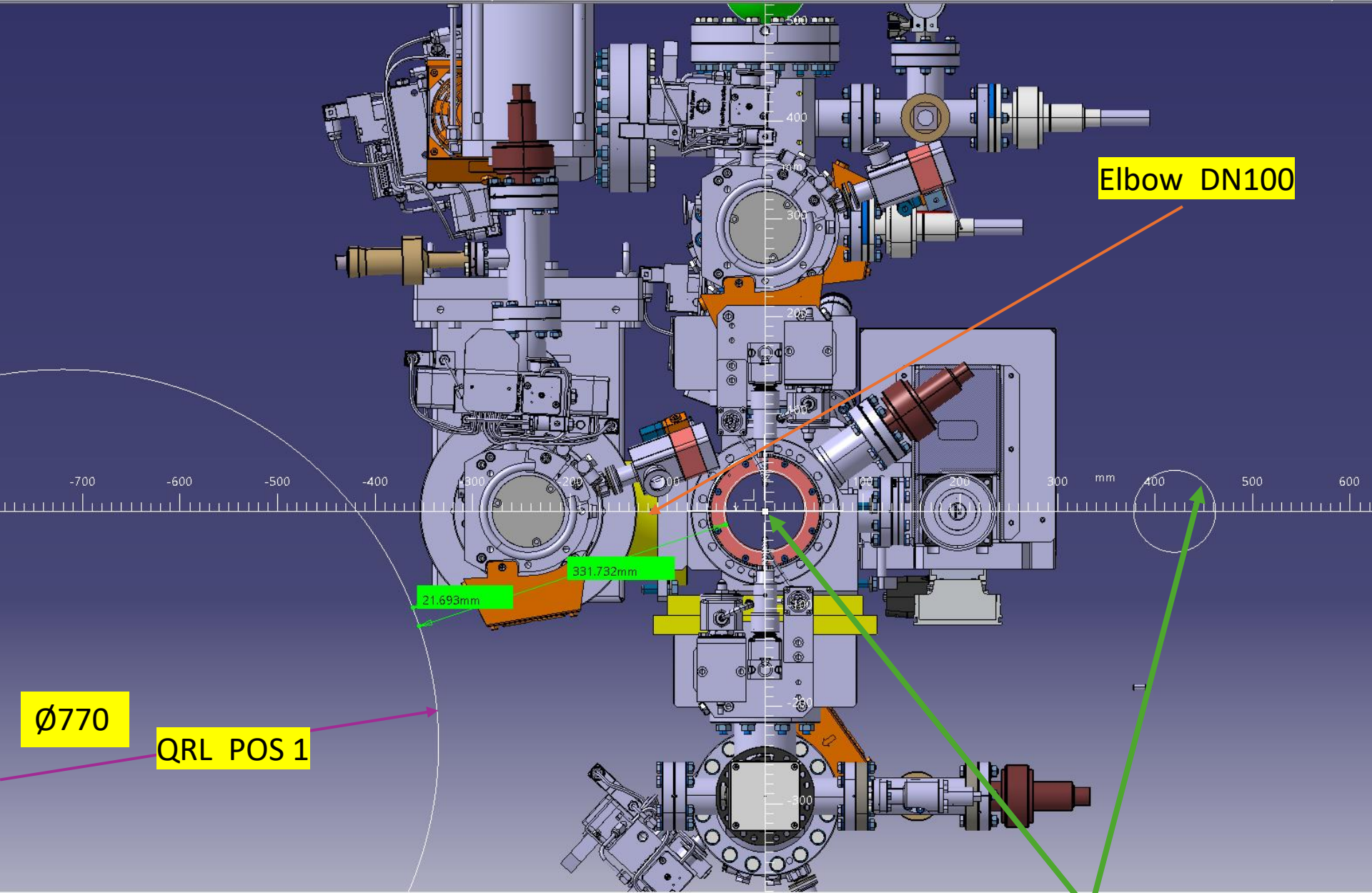
Elbow DN100

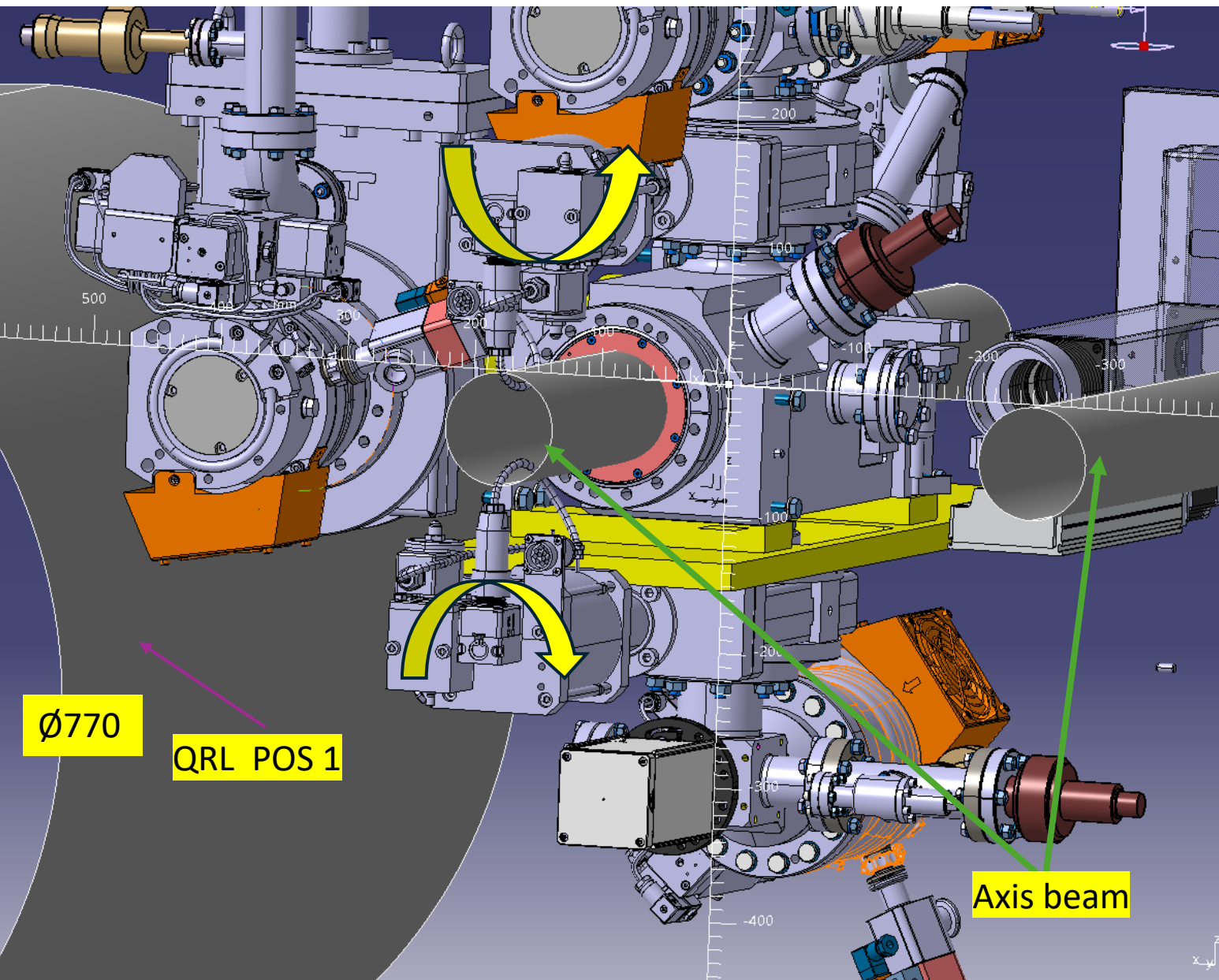
Axis beam

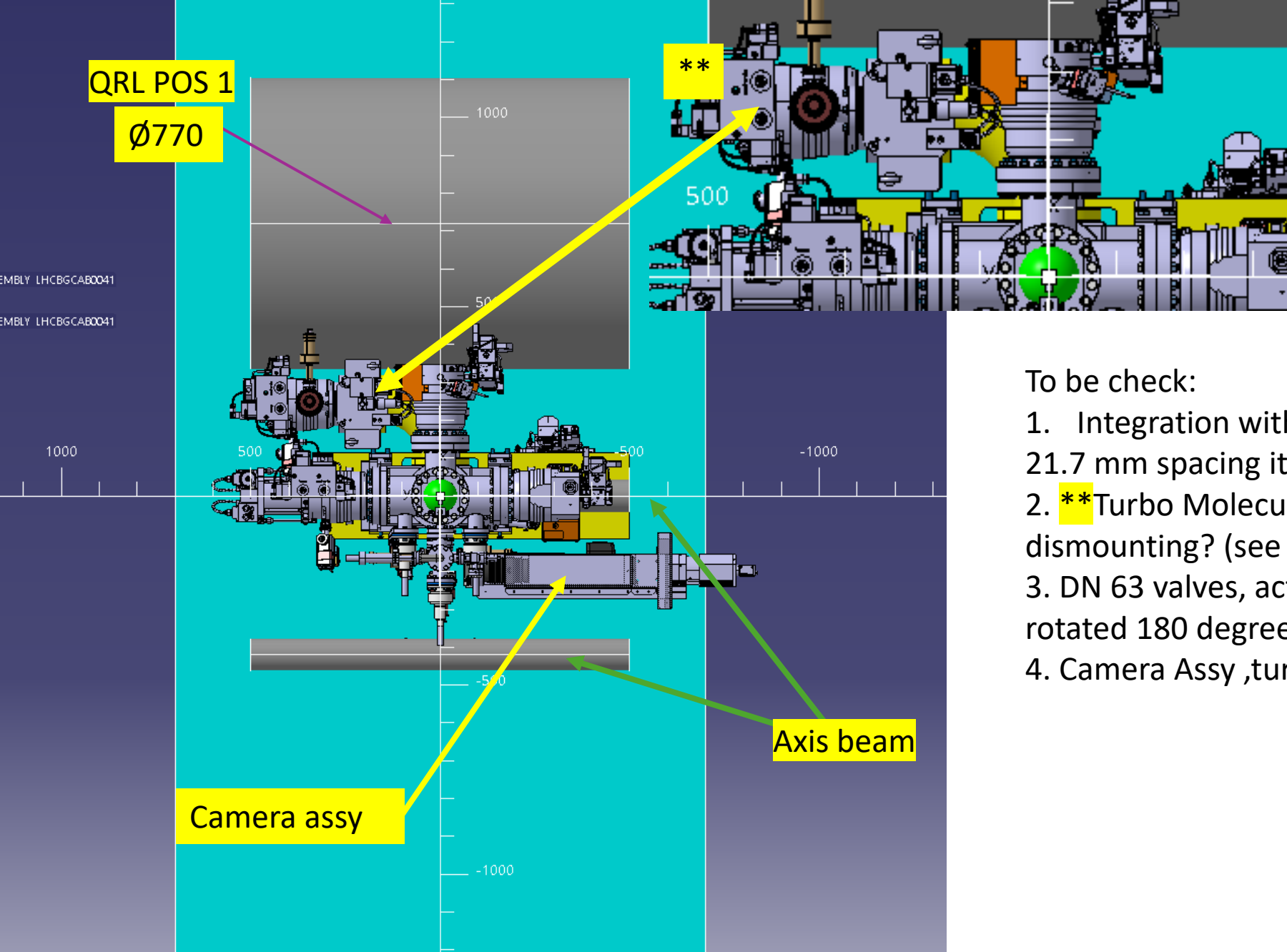
QRL POS 1

24/07/2024

BSC_PT4 RIGHT_FPILLON







To be check:

1. Integration with Scan , Valve DN100 / QRL 21.7 mm spacing it's, ok ? (see slide 9)
2. **Turbo Molecular Pump DN100_ mounting and dismounting? (see slide 9)
3. DN 63 valves, actuator instrumentation can be rotated 180 degrees? (see slide 10)
4. Camera Assy ,turned 90 degrees possibility ?