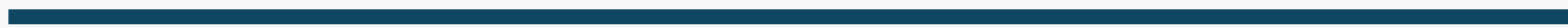


R&D meeting

Recovery systems

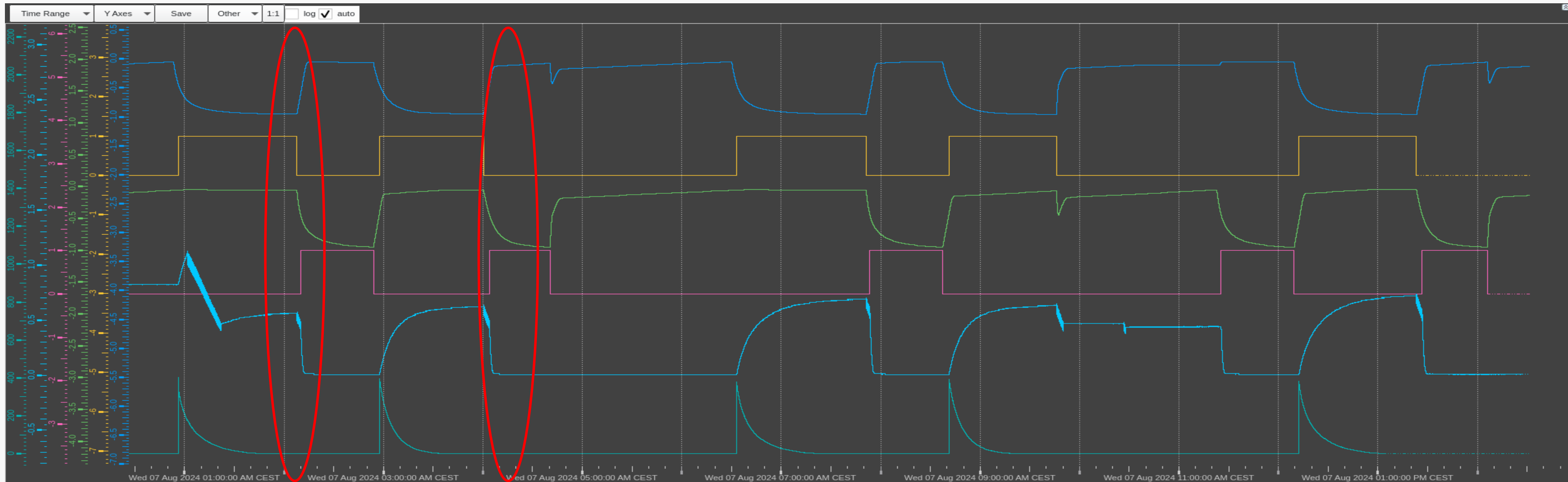
Maria Cristina Arena

08/08/2024



CMS CSC CF₄ Recovery

- Problem found on the YV2228 → this morning it was replaced with a new one, check ongoing



Wed 07 Aug 2024 02:31:34 PM CEST .460

CMSRE_CF_PT2109.PosSt

CMSRE_CF_YV2128.OnSt

CMSRE_CF_PT2209.PosSt

CMSRE_CF_YV2228.OnSt

-0.131

0.00

-0.140

0.00

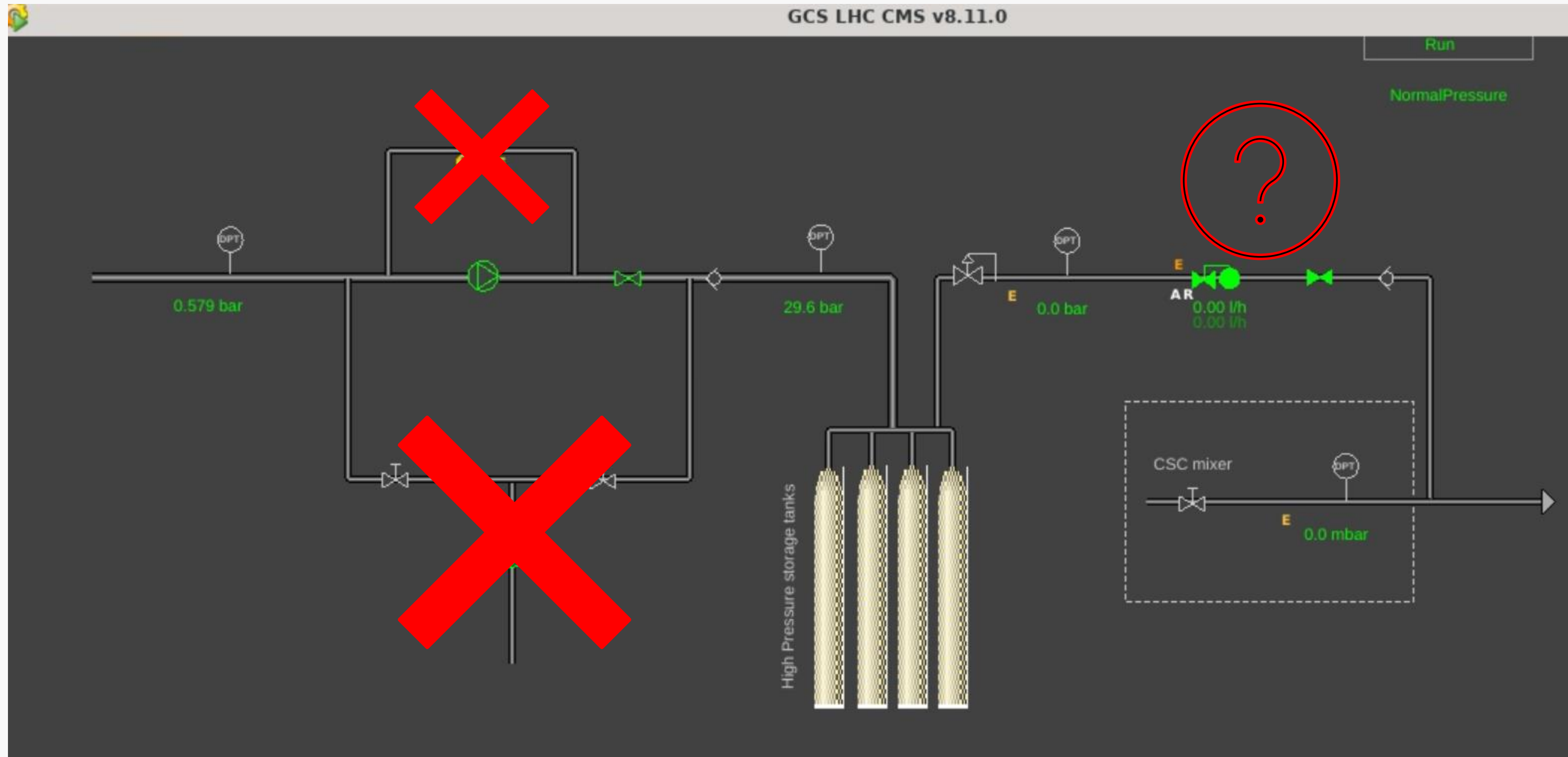
CMSRE_Pp_PT4801.PosSt

CMSRE_CF_FIT2029.PosSt

0.010

0.0

CMS CSC CF₄ Recovery – Pump module



CMS RPC R_{134a} Recovery

- This week the efficiency was affected by Pump 1 → it reached around 400 working hours that it too much for the working conditions of the recovery system
 - Pump 1 disabled and efficiency back to 83% today!
 - Still 15 days for the pump 2 then it must be repaired → no repair kit and no spare compressor → System must be stopped (?)
-