

Micropumps humidity test

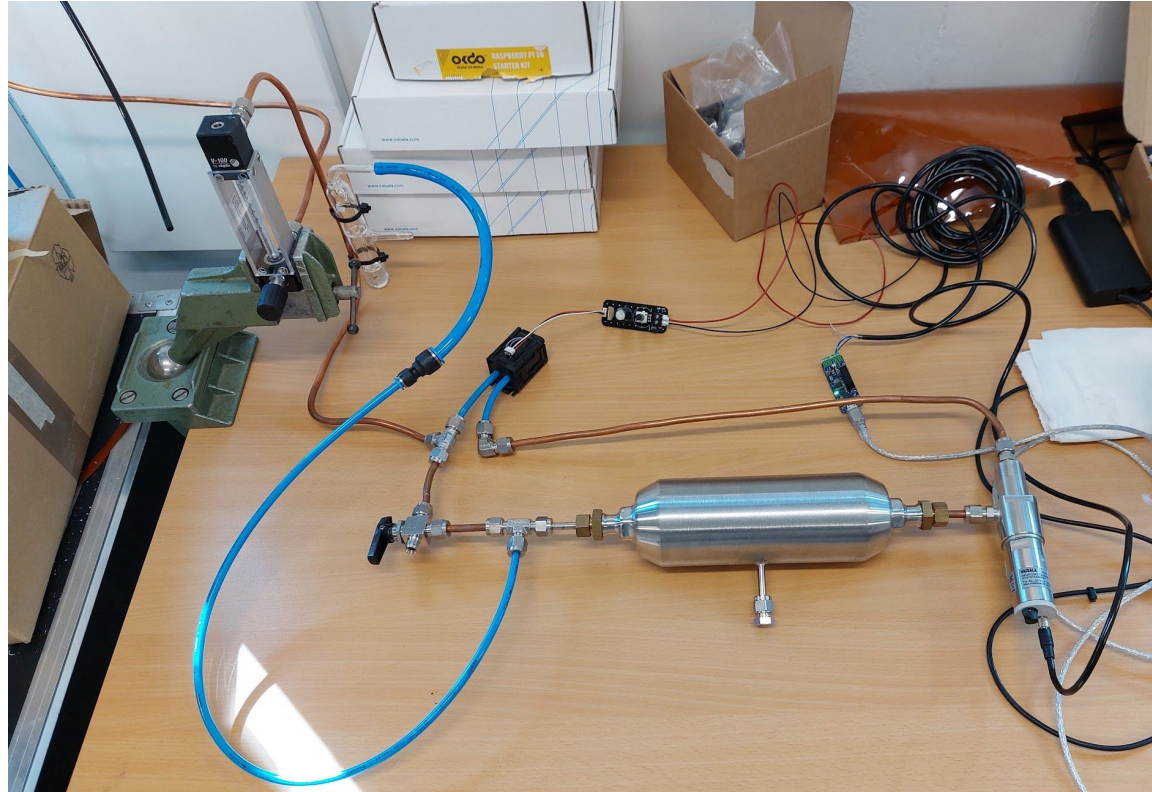
Setup

Simplest closed loop system imaginable.

Gas: N₂ from bottles

Input flow: ~0.5 L/h

Used copper piping wherever possible

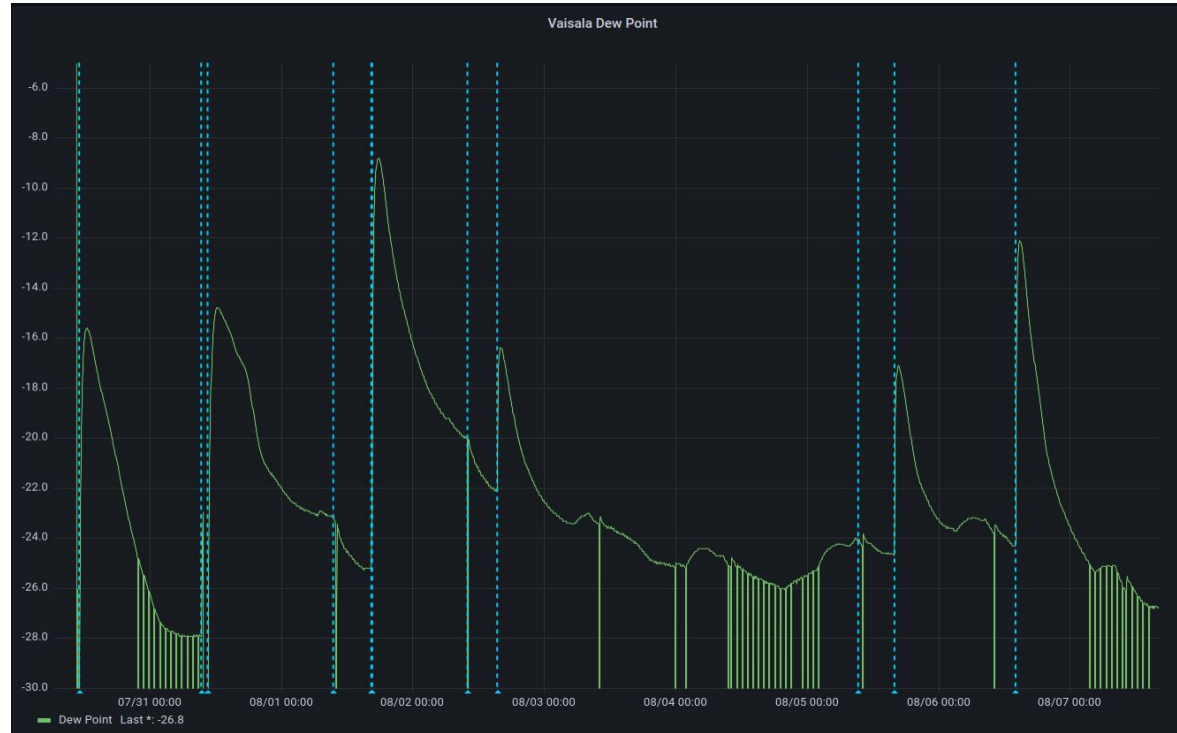


Results

After 24h, the humidity somewhat stabilizes.

However, the level is never fully stable...

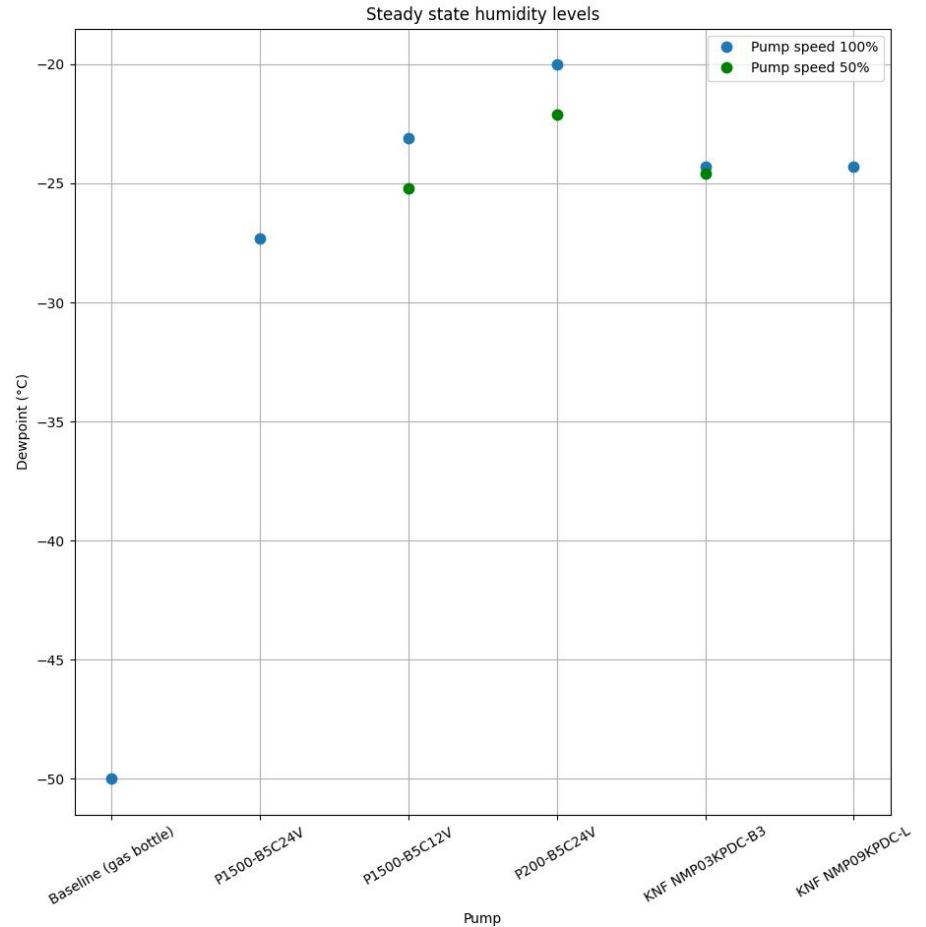
[Link to Grafana](#)



Results

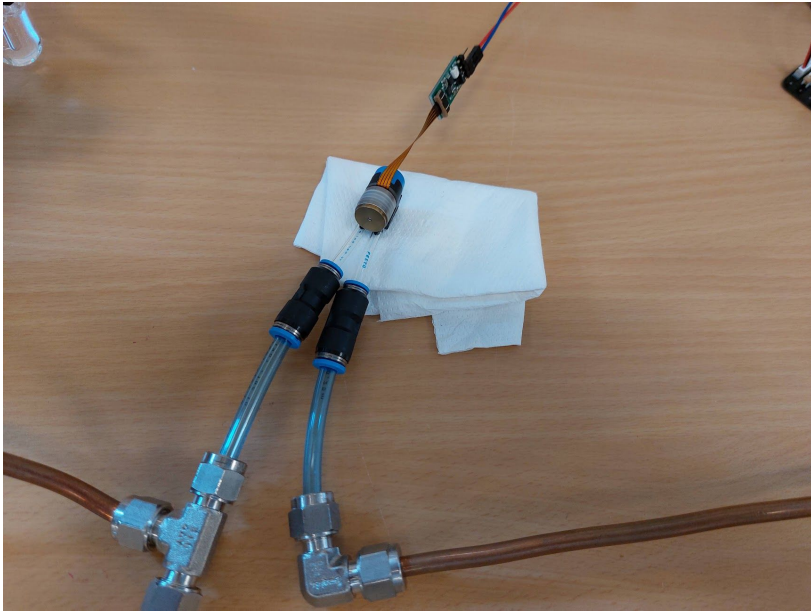
Note: the pump flow differs

Pump	Max air flow (L/h)
P1500-B5C24V	72
P1500-B5C12V	72
P200-B5C24V	24
KNF NMP03KPDC-B3	20
KNF NMP09KPDC-L	54



Festo adapters 4mm to 6mm: weak point?

KNF NMP03KPDC-B3



P200-B5C24V

