

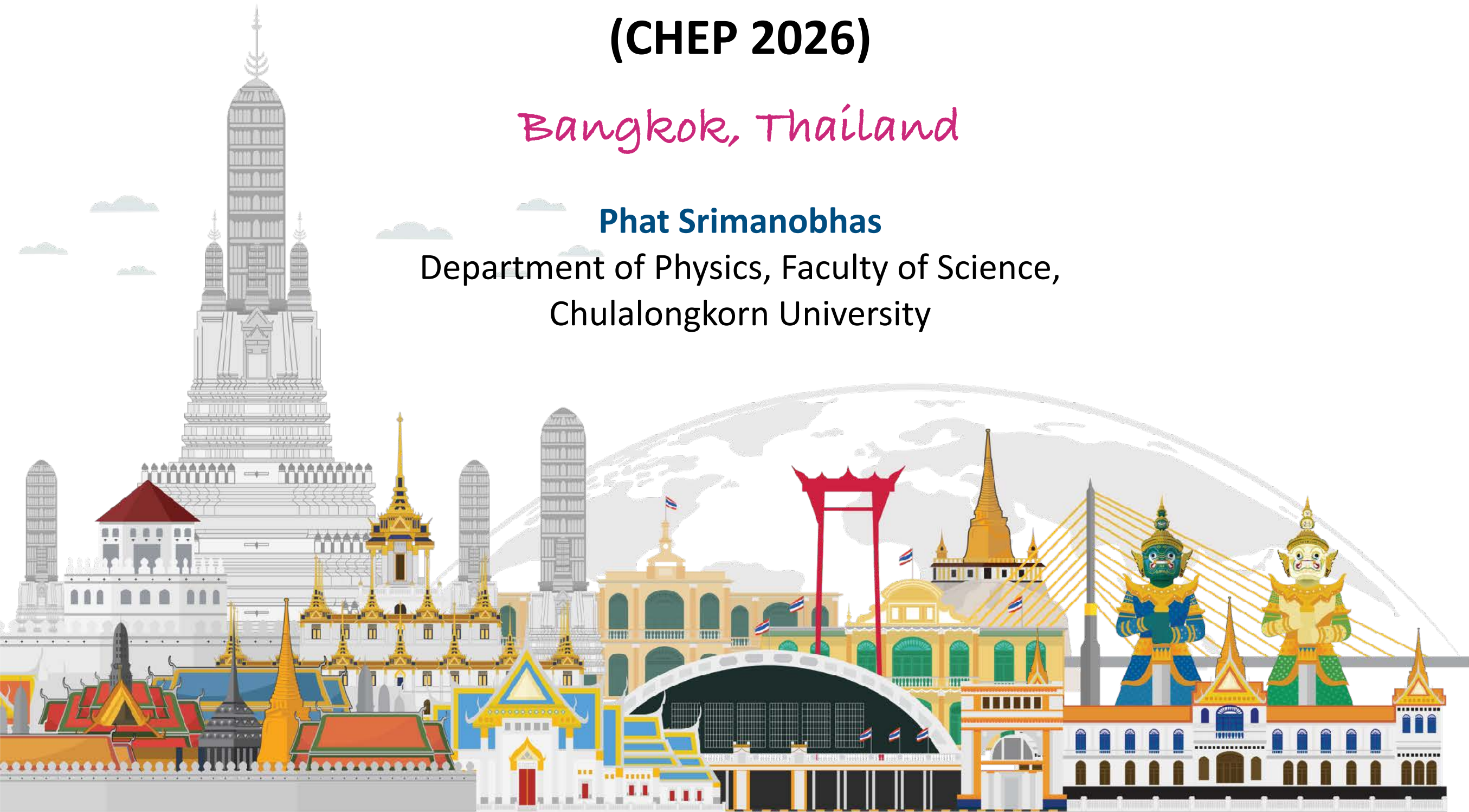


# Proposal to host the 28th International Conference on Computing in High-Energy and Nuclear Physics (CHEP 2026)

*Bangkok, Thailand*

**Phat Srimanobhas**

Department of Physics, Faculty of Science,  
Chulalongkorn University





# Prologue

- **Introduction**

- Kingdom of Thailand
- Thai - High Energy Physics and Nuclear Physics Global Partnership
- Thailand in the end of May - June
- Travel to Thailand *is very easy*

- **Proposal to host CHEP 2026**

- Experience to host conferences
- Possible conference venues and accommodations
- Proposed dates
- Conference format and fee
- Social events
- Local organizing committee, funding support

- **Summary**





# Kingdom of Thailand



## About Thailand

- Area: 513,120 square kilometres
- Population: 66 million
- Time: GMT+7 hrs
- Language: Thai; English is widely understood in Bangkok and tourist provinces
- Climate: A tropical climate – hot&dry, rainy, cool average temp. 20 – 35 °C
- People: 80% Thai, 10% Chinese, 3% Malay, etc.
- Religion: 95% (Buddhism), 4% (Muslim), 1% (others)
- Electricity: 220 volt AC (50 cycles)



amazing  
**THAILAND**

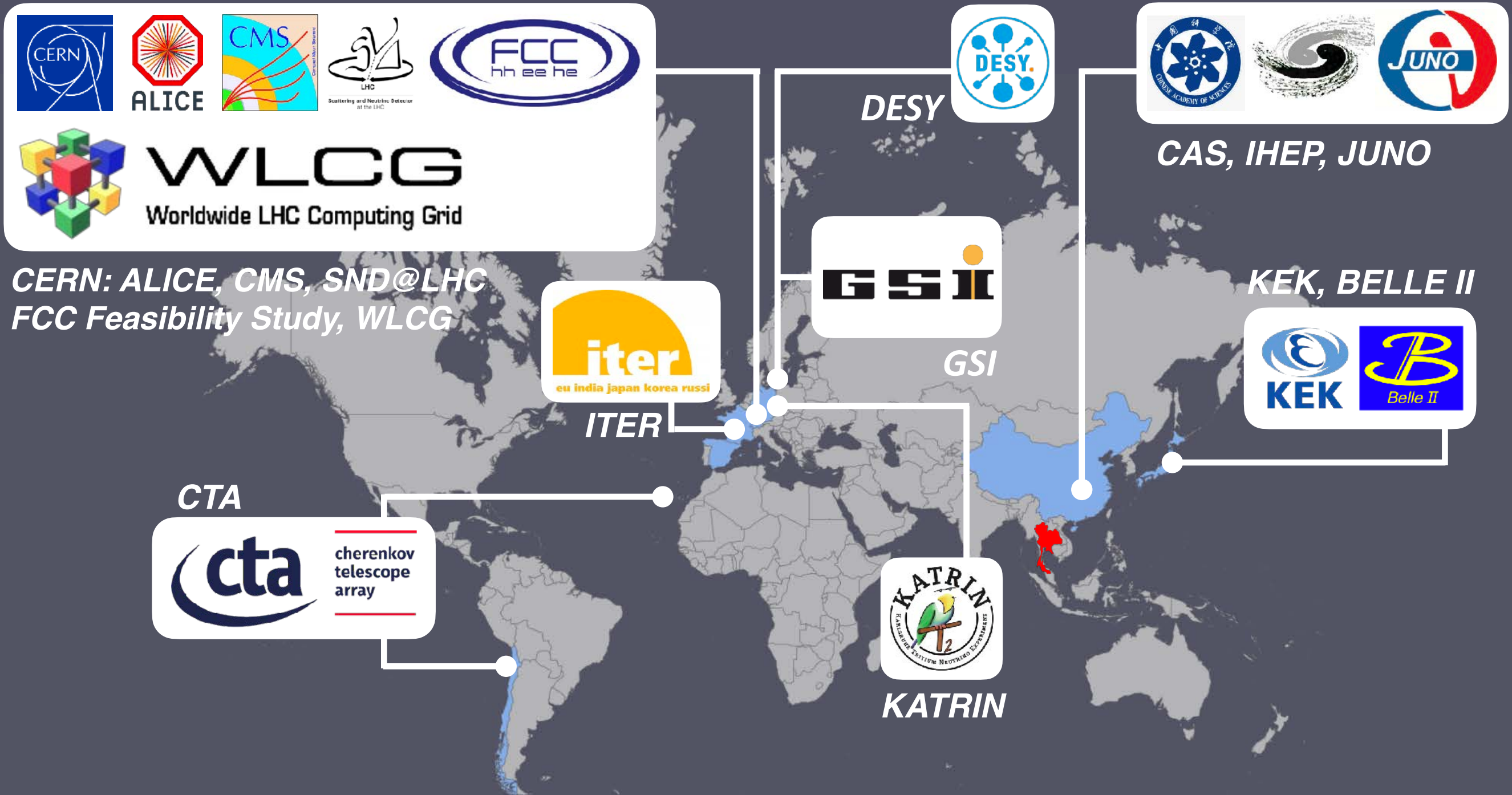
A graphic of a wide, colorful smile with a gradient from pink to yellow to orange.

**#1 Must-Visit  
destination in 2024**





# Thai - HEP and NP Global Partnership



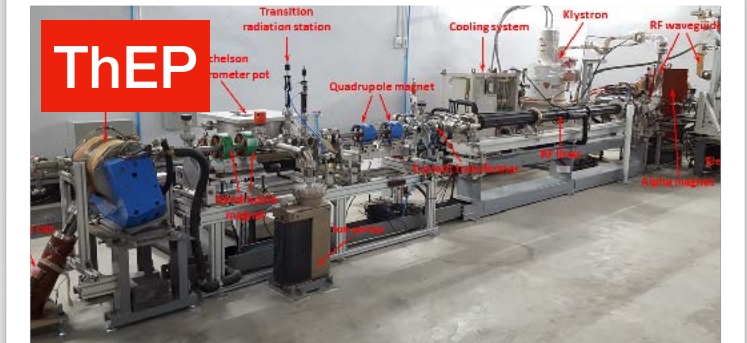
*CERN: ALICE, CMS, SND@LHC  
FCC Feasibility Study, WLCG*

**THAI: CU, SUT, SWU, NU, KKU, KU, KMUTT, MU, CMU, WU, SLRI, ThEP, NARIT, TINT, PMU-B**



# Thai Institutes related to HEP and NP

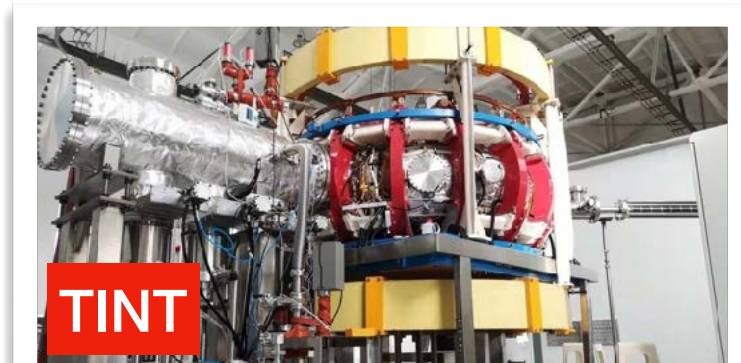
- National Astronomical Research Institute of Thailand (Public Organization); NARIT
- Thailand Center of Excellence in Physics; ThEP



- Synchrotron Light Research Institute (Public Organization); SLRI



- Thailand Institute of Nuclear Technology (Public Organization); TINT
- National Science and Technology Development Agency; NSTDA



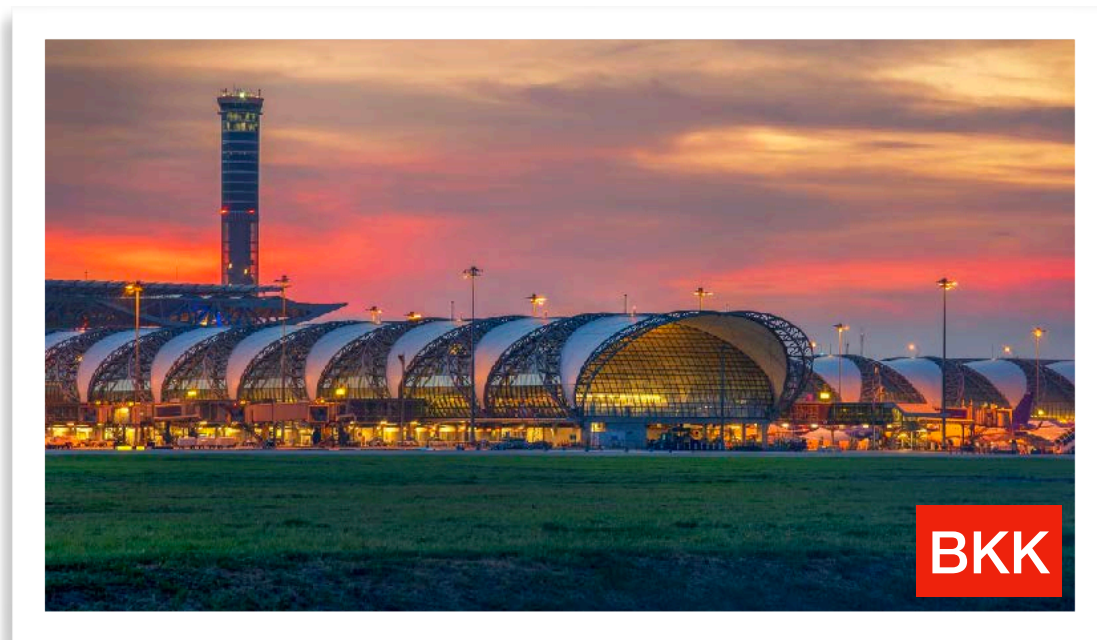


# Travel to Thailand *is very easy*

## Two international airports of Bangkok

- **Suvarnabhumi International Airport (BKK)**: Several direct and 1-stop flights
  - Europe: London, Paris, Brussels, Zurich, Milan, Amsterdam, Vienna, Frankfurt, Helsinki, Oslo, Copenhagen, Rome, Geneva
  - North/South America: Major cities
  - Africa: Cairo, Major cities
  - Asia: Beijing, Delhi, Mumbai, Tokyo, Seoul, Kuala Lumpur
  - Australia/New Zealand: Melbourne, Sydney, Perth, Auckland
- **Don Mueang International Airport (DMK)**: 7th oldest airport in the world, oldest of Aisa  
Budget airlines to several asian cities including Tokyo, Osaka, Seoul, Beijing, Taipei, Singapore

From both airports, the airport link can be used to connect to Bangkok metro system. The distance from the conference venue is ~30 km. The taxi cost is less than 15 euro.



# Travel to Thailand *is very easy*

## (June 18, 2024) 93 countries can enter to Thailand without a Visa (Thailand Visa Exemption Scheme and Bilateral Agreements)

- **Africa:** Mauritius, Morocco, South Africa
- **America:** Argentina (90 days), Brazil (90 days), Canada, Chile (90 days), Colombia, Cuba, Guatemala, Dominica, Dominican Republic, Ecuador, Jamaica, Mexico, Panama, Peru (90 days), Trinidad and Tobago, United States, Uruguay
- **Asia:** Bhutan, Brunei, Cambodia, China, Hong Kong, India, Indonesia, Japan, Kazakhstan, Laos, Macau, Malaysia, Maldives, Mongolia, Myanmar (14 days), Philippines, Singapore, South Korea (90 days), Sri Lanka, Taiwan, Uzbekistan, Vietnam
- **Europe:** Albania, Andorra, Austria, Belgium, Bulgaria, Croatia, Czech Republic, Denmark, Estonia, Finland, France, Georgia, Germany, Greece, Hungary, Iceland, Ireland, Italy, Kosovo, Latvia, Liechtenstein, Lithuania, Luxembourg, Malta, Monaco, Netherlands, Norway, Poland, Portugal, Romania, Russia, San Marino, Slovak Republic, Slovenia, Spain, Sweden, Switzerland, Ukraine, United Kingdom
- **Middle East:** Bahrain, Cyprus, Israel, Jordan, Kuwait, Oman, Qatar, Saudi Arabia, Turkey, United Arab Emirates
- **Oceania:** Australia, Fiji, New Zealand, Papua New Guinea, Tonga





# Experience to host conferences

## Organized by the Department of Physics Conferences

- Siam Physics Congress 2015: ~400 participants
- CMS Remote Week 2019: ~200 participants
- Flavor Physics and CP Violation 2024: 100 participants

## Public lectures

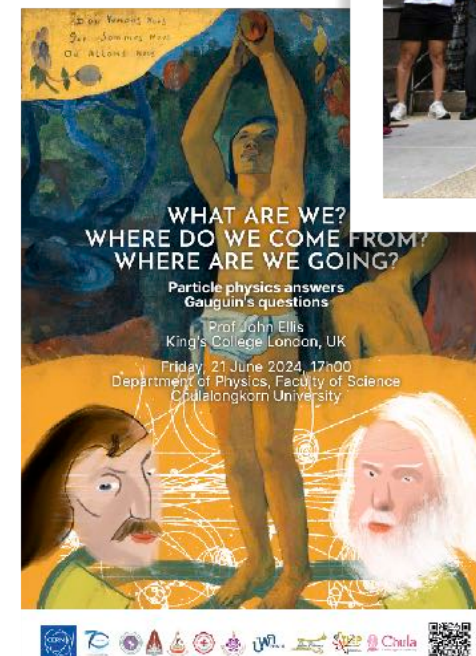
- 2017 - G. 't Hooft, The Mystery of the Quantum Black Hole: ~250 participants
- 2024 - J. Ellis, What are we? Where do we come from? Where are we going?: ~200 participants

## Annual workshops

- Bangkok Workshops on High-Energy Theory
- Bangkok Workshops on Discrete Geometry, Dynamics and Statistics

## Experiences from members of Thai HEP consortium

- 13th International Particle Accelerator Conference, IPAC22: Organized by Synchrotron Light Research Institute (Public Organization), June 12-17, 2022: ~700 participants





# Possible conference venues and accommodations

## Bangkok

Bangkok is famous for its vibrant street life and cultural landmarks. The city offers a mix of traditional Thai culture and modern attractions, including lively markets and a dynamic nightlife. Bangkok is also known for its delicious street food and bustling shopping districts. We are looking at a few options that fulfill the conference requirements.



**Queen Sirikit National Convention Center**



**Bangkok International Trade & Exhibition Centre**



**Chulalongkorn University**

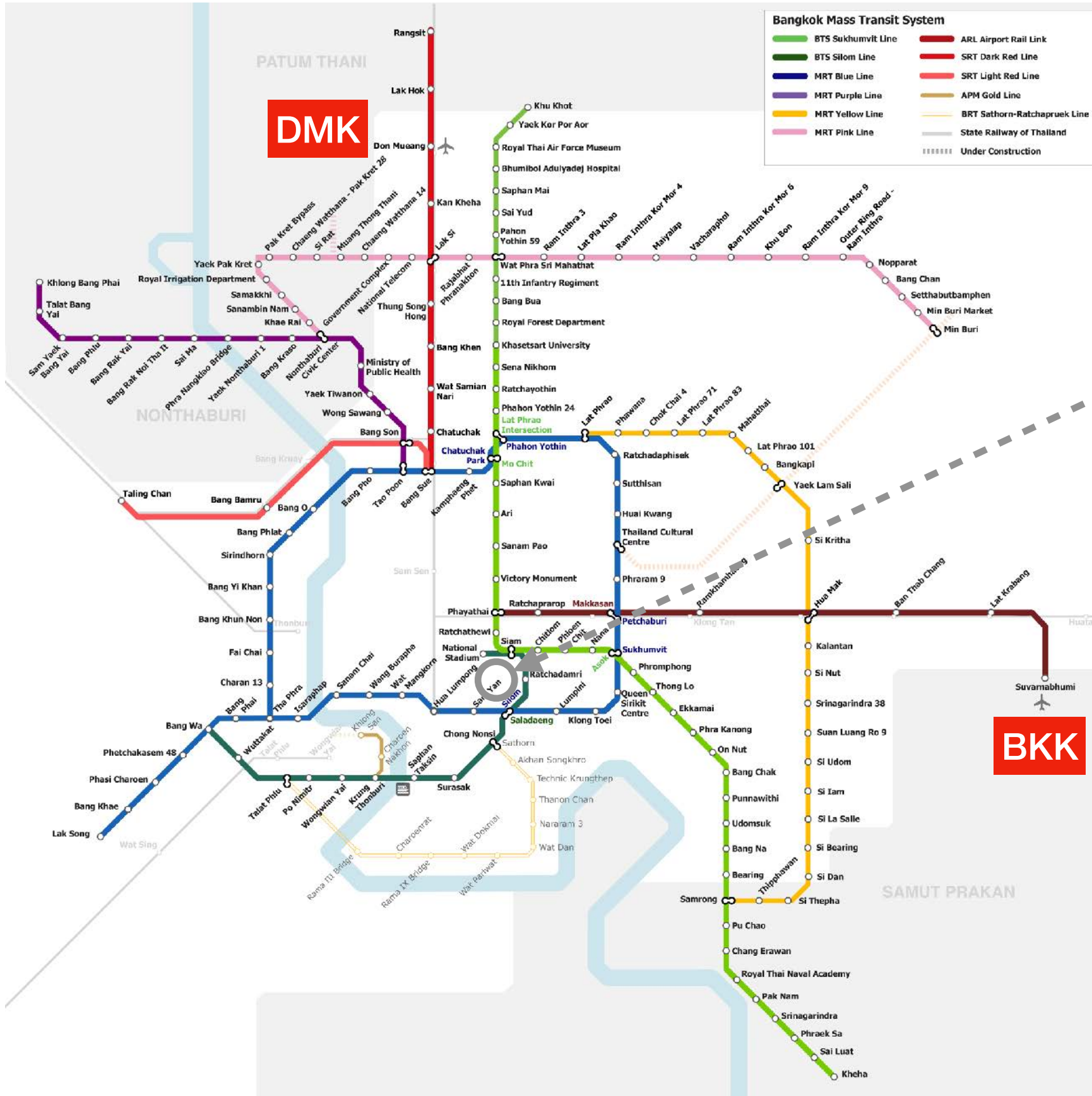


**The Sukosol Hotel, Bangkok**

and few more.



# Pre-CHEP workshop

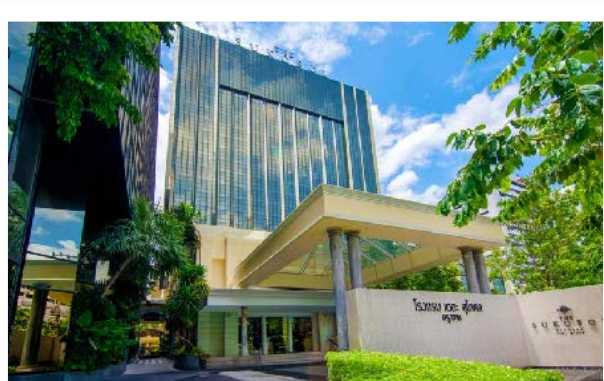
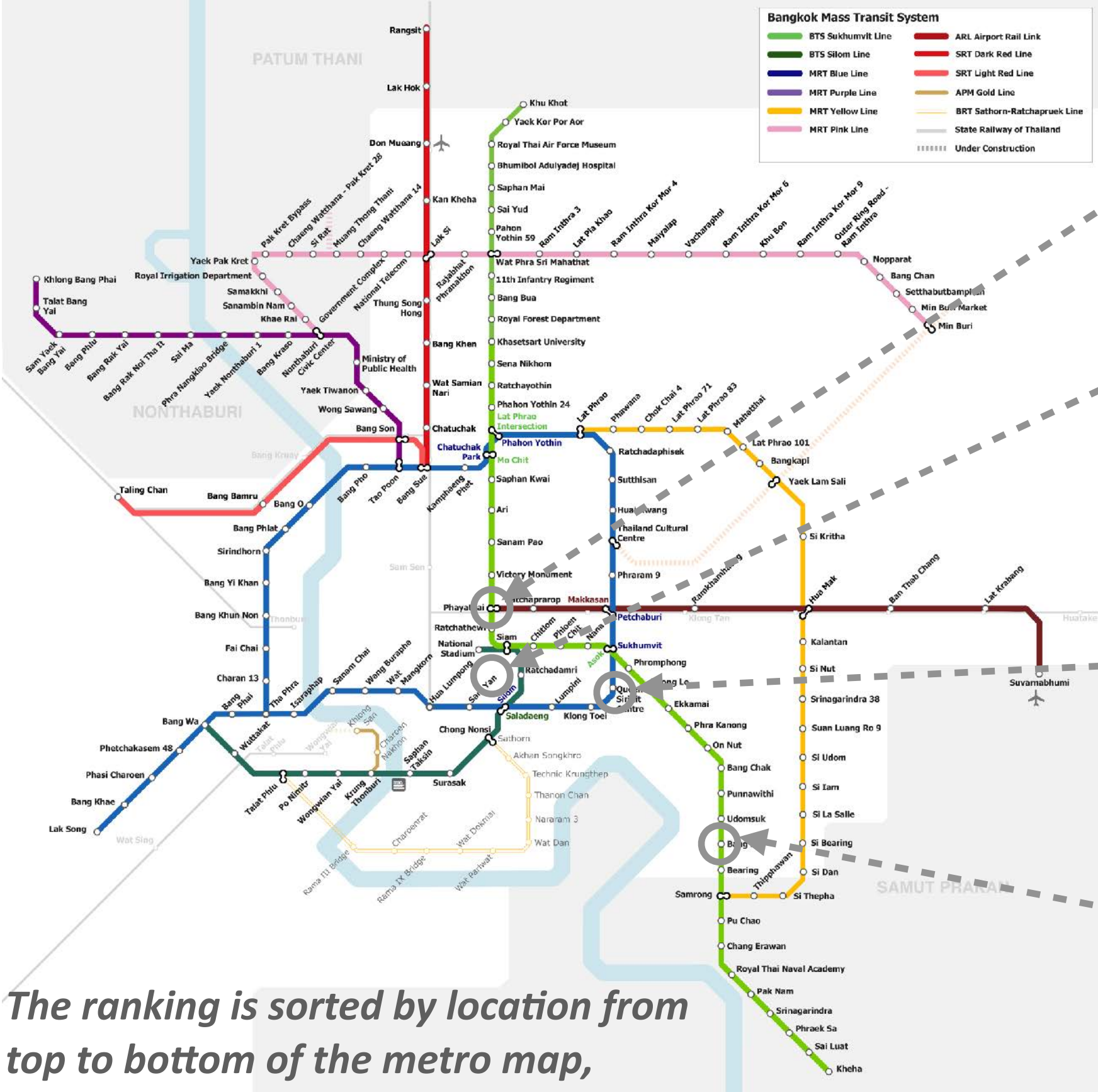


**Chulalongkorn University**

Proposal to host pre-CHEP at Chulalongkorn University. It is located almost in the center of Bangkok, with easy access to metro lines.



# Conference Venues



**The Sukosol Hotel**



**Chulalongkorn University**



**Queen Sirikit National Convention Center**








**Bangkok International Trade & Exhibition Centre**

*The ranking is sorted by location from top to bottom of the metro map, rather than by preference.*



# 1: Sukosol Hotel



				
800 Seat	500 Seat	600 Seat	800 Seat	400 Seat



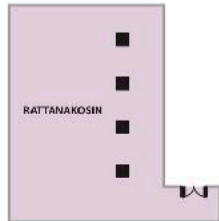
- ARL (BKK Airport) and BTS
- 2 Metro stops to Chulalongkorn University, for Pre-CHEP workshop
- The Ballroom can accommodate up to 500 classroom style, and 800 sit-down dinner, or 1,000 people for a cocktail reception. Ten other function rooms from 20-260 people. Garden Pavilion is available for informal gatherings.
- 10 rooms for parallel sessions.
- Room price: ~80 EUR



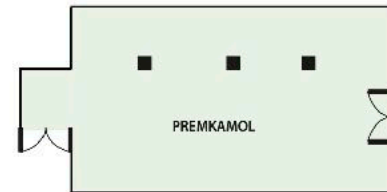
# 1: Sukosol Hotel

WWW.THESUKOSOL.COM

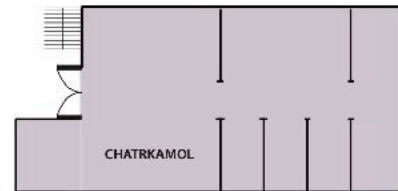
Rattanakosin 1st fl.



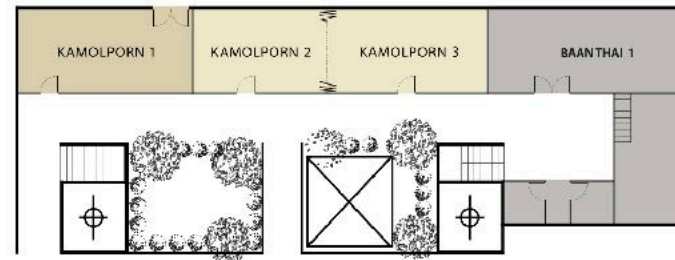
Premkamol 1st fl.



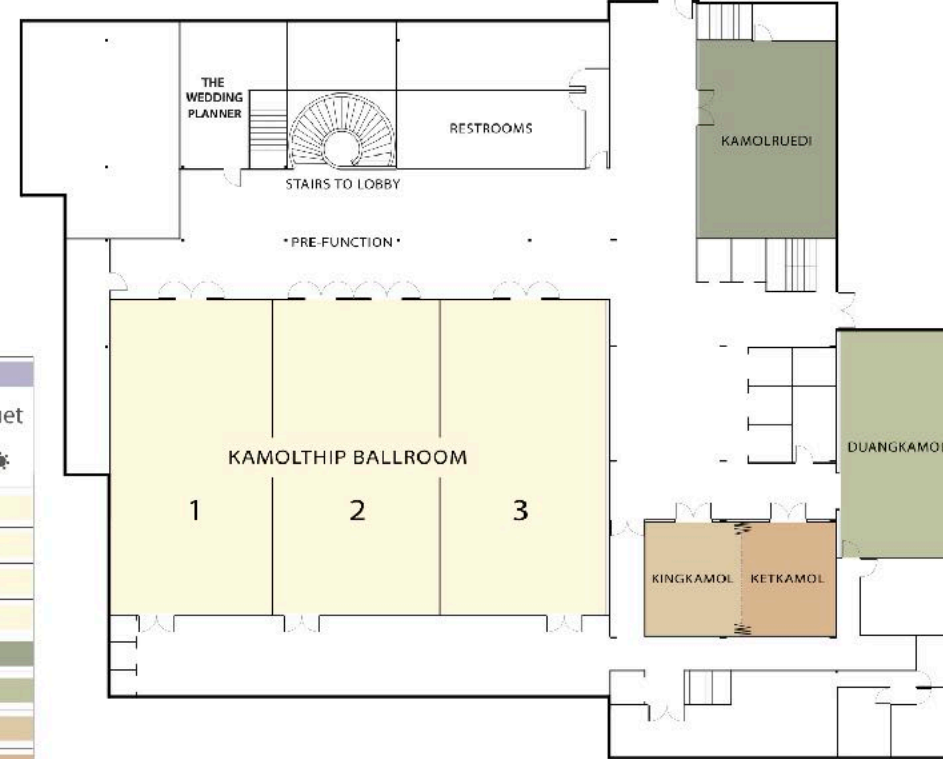
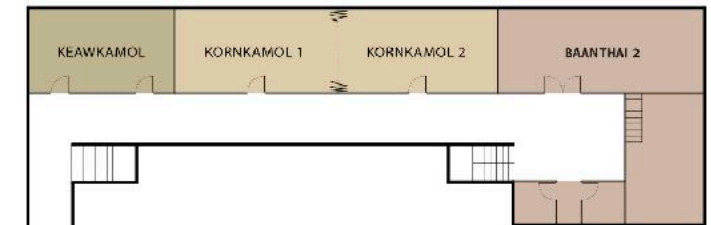
Chatrkamol 2nd fl.



Garden Pavilion 1st Fl.



Garden Pavilion 2nd Fl.



Siam Wing 6th Fl.

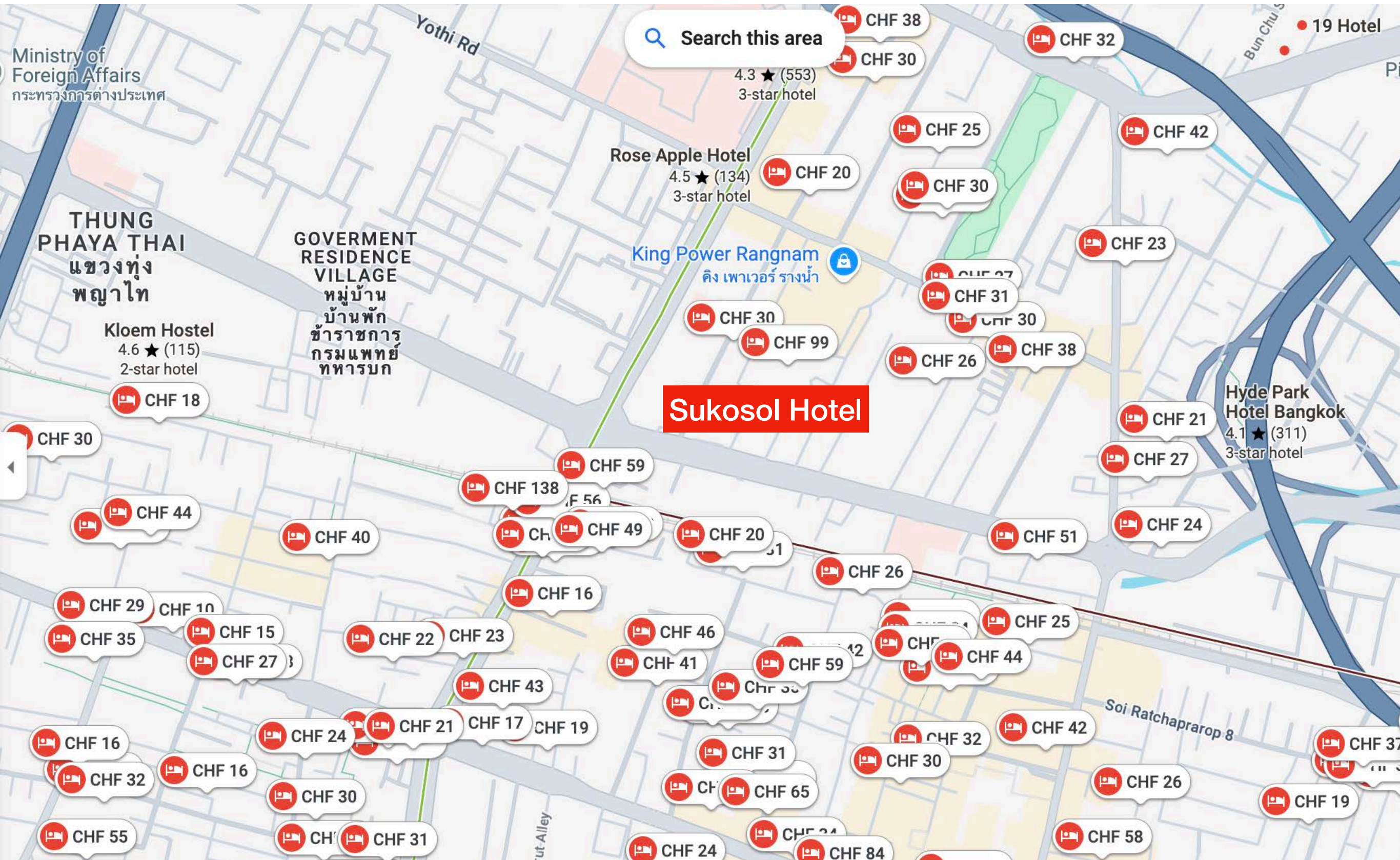


ROOMS	DIMENSIONS			CAPACITIES			
	Dimensions (m.)	Area (sq.m.)	Ceiling Height (m.)	Theatre	Classroom	Cocktail	Banquet
Kamolthip Ballroom	22 x 33	726	5	800	500	800	600
Room 1	11 x 22	242	5	260	140	200	150
Room 2	11 x 22	242	5	260	140	200	150
Room 3	11 x 22	242	5	260	140	200	150
Kamolruedi	8 x 12.5	100	3.5	72	45	60	50
Duangkamol	7 x 15	105	3.5	96	60	70	80
Kingkamol	5 x 7	35	3.5	30	27	30	30
Ketkamol	6 x 7	42	3.5	40	27	30	30
Kamolmart	7 x 14	98	3.5	90	60	120	80
Kornkamol	5.5 x 22	121	3	137	84	130	100
Kaewkamol	5.5 x 7	38.5	3	39	24	30	30
Kamolporn	5.5 x 29	159	3	180	100	180	150
Rattanakosin	10 x 14	140	8	140	45	130	80
Premkamol	19 X 15	285	2.7	-	-	100	90
Chatrkamol	15 X 33	495	2.7	-	-	80	-
BaanThai 1	8 X 14	112	2.7	40	-	30	40
BaanThai 2	11 X 11	121	2.6	50	30	40	50

  
**THE SUKOSOL**  
 BANGKOK  
 A SUKOSOL HOTEL

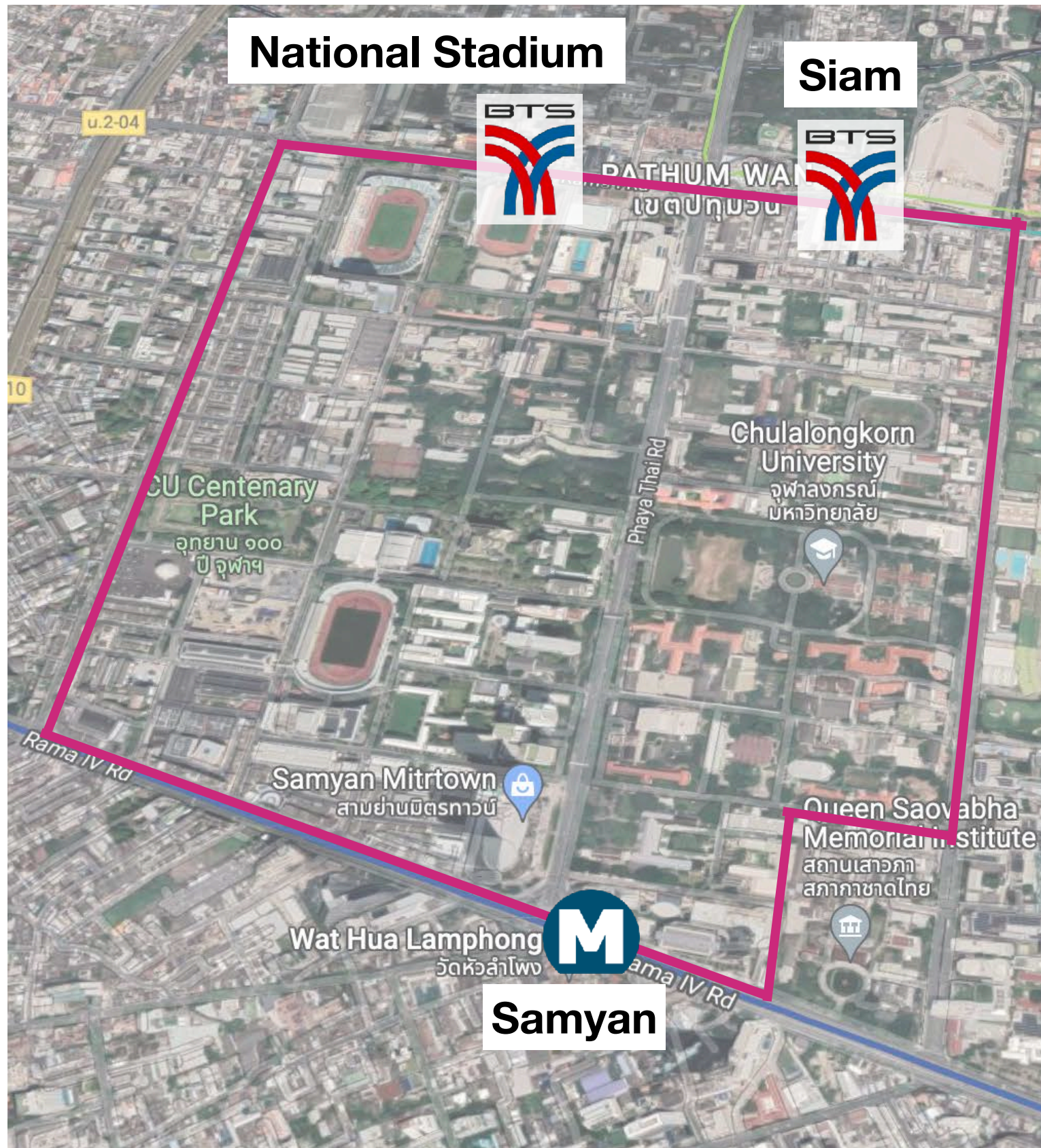


# 1: Sukosol Hotel





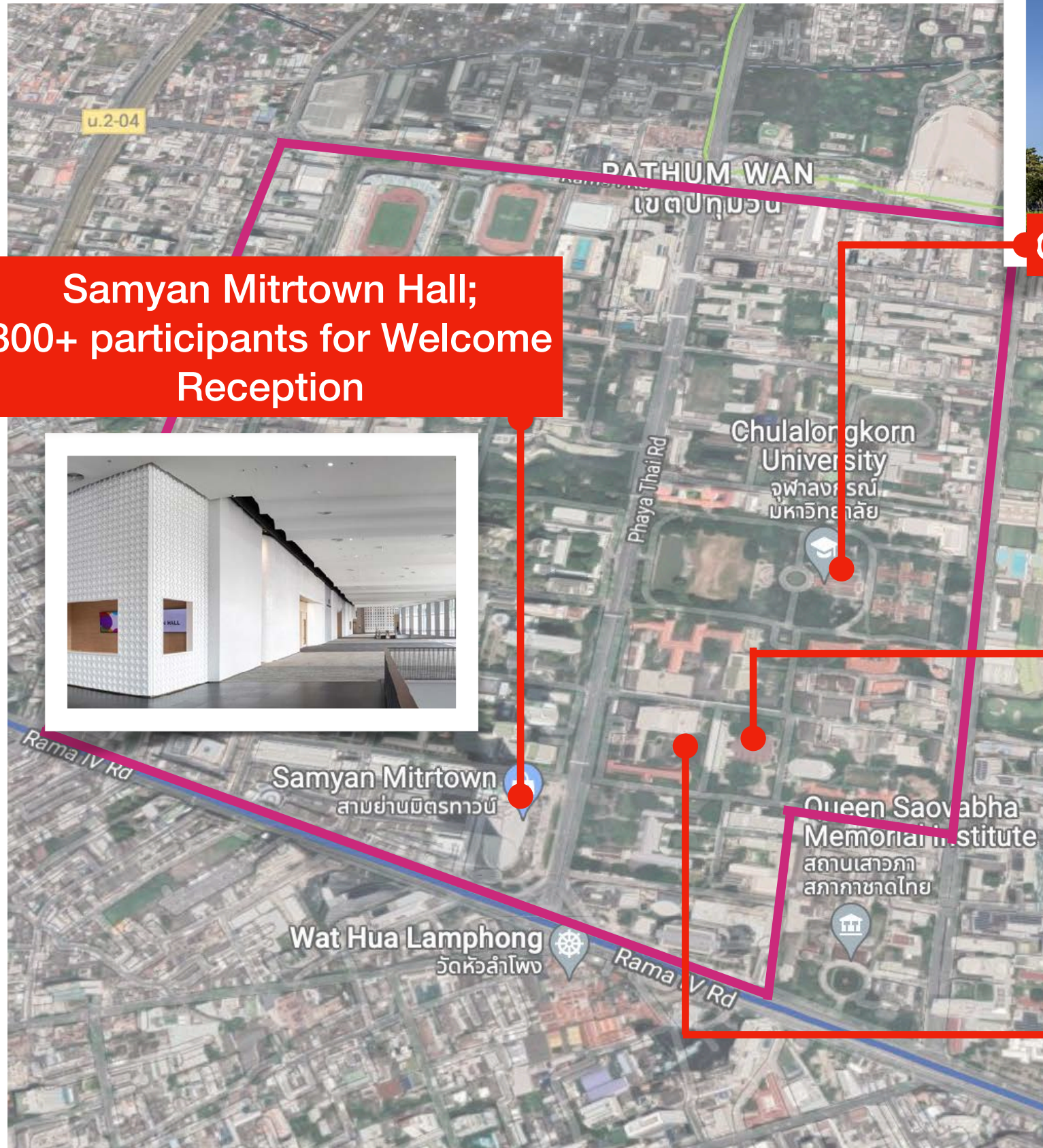
## 2: Chulalongkorn University



- Thailand's oldest, and most prestigious university, founded in 1917
- Located in Bangkok downtown over 2.1 km<sup>2</sup>
- Accommodation, top sights and shopping facilities are in the vicinity
- Excellent transportation, well connected with city's metro systems
  - Both Bangkok Mass Transit System (BTS) and Metropolitan Rapid Transit (MRT) have connection stations to the airport links. Traveling to and from both airports of Bangkok is very easy.

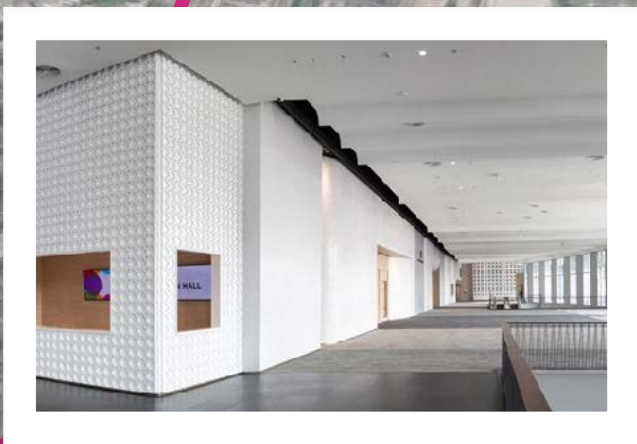


# 2: Chulalongkorn University



Chulalongkorn Auditorium: 1500 seats

Samyan Mitrtown Hall; 800+ participants for Welcome Reception



Sala Prakieo for Coffee Break, Lunch, and Poster Session



Faculty of Science: 12 Rooms for 120+ participants, 20+ Rooms for 40-60 participants



## 2: Chulalongkorn University



A list of surrounding accommodations within 10-15 minutes walk to the conference venue:

### Inside university

1. CU International House: Laundry, free WiFi, 24 hrs reception, convenience store
2. SASA International House: Laundry, complementary WiFi, breakfast, swimming pool and sauna, Restaurant

### Hotel around the university

3. Pathumwan Princess Hotel (4.5\*)
4. Novotel Bangkok on Siam Square (4\*)
5. Mercure Bangkok Siam (4\*)
6. Siam Kempinski Hotel Bangkok (5\*)
7. iBis Bangkok Siam Hotel (3\*)
8. Mandarin Hotel (4\*)
9. Montien Hotel Bangkok (4\*)
10. Triple Y Hotel Sam Yan (4\*)

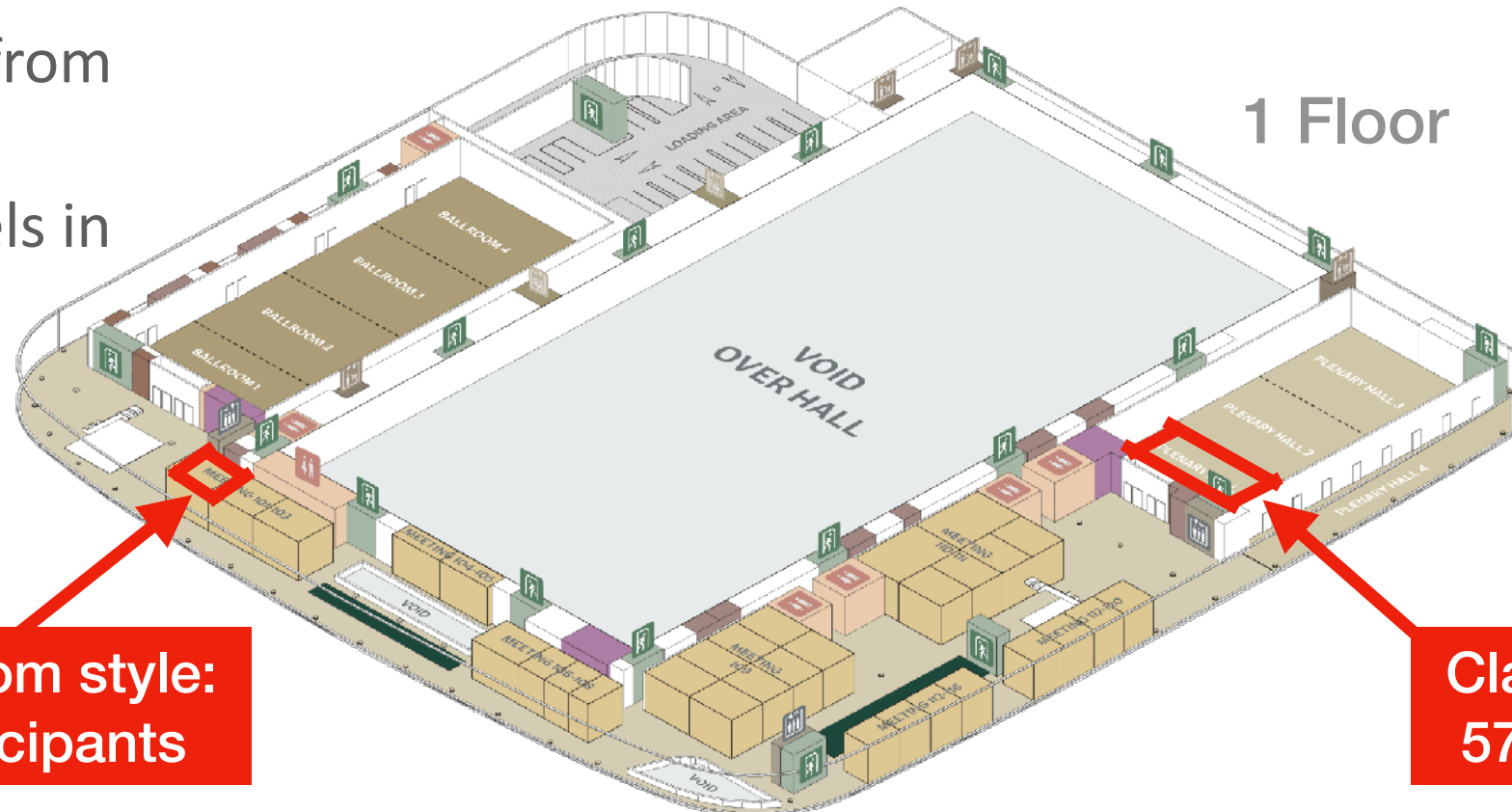
and many more within 1 metro stop.



# 3: Queen Sirikit National Convention Center



- MRT, and 1 stop from nearest BTS
- Surround by hotels in tourist area
- 3 stops from Chulalongkorn U.

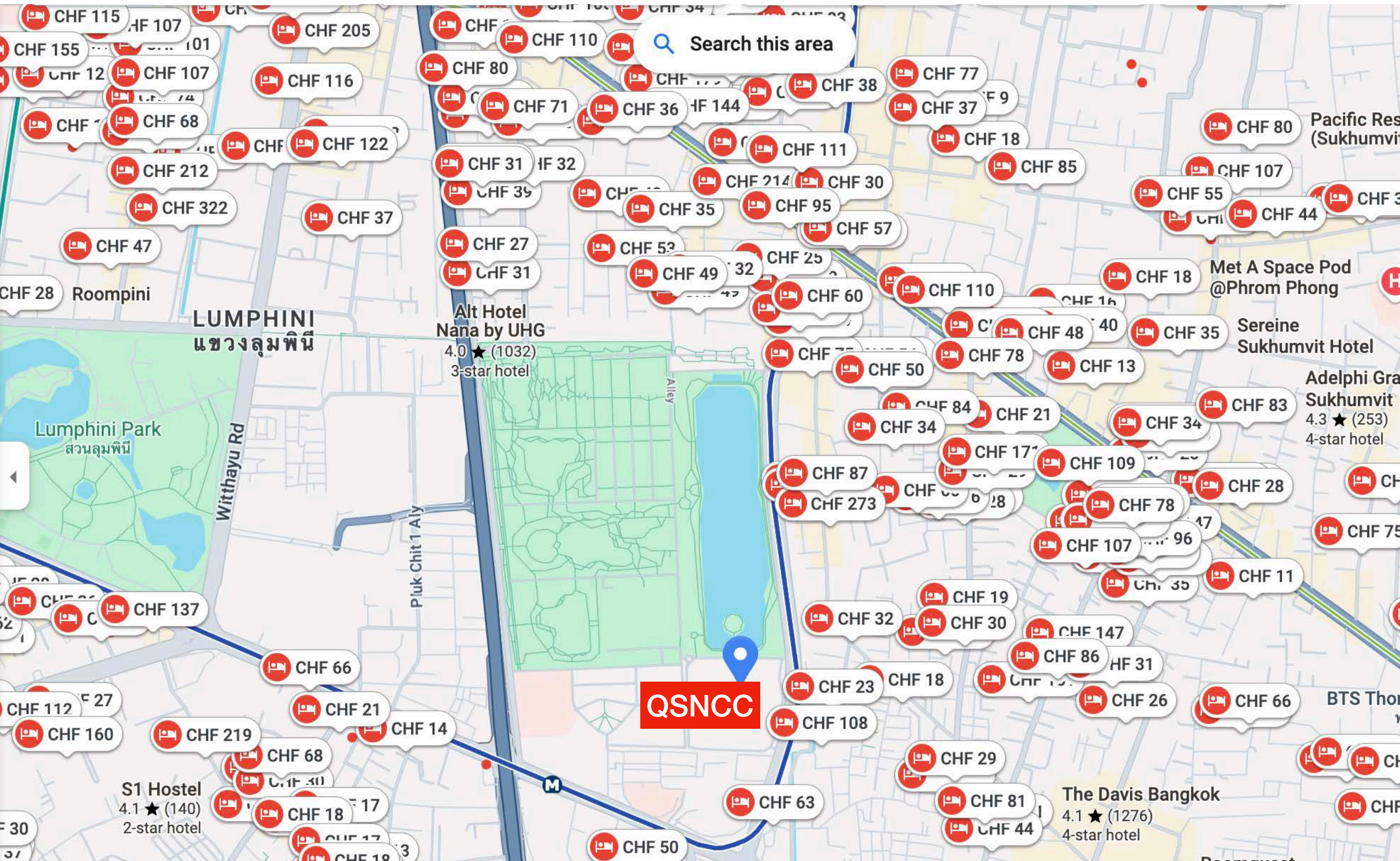


**Class room style:  
72 participants**

**Class room style:  
570 participants**



# 3: Queen Sirikit National Convention Center

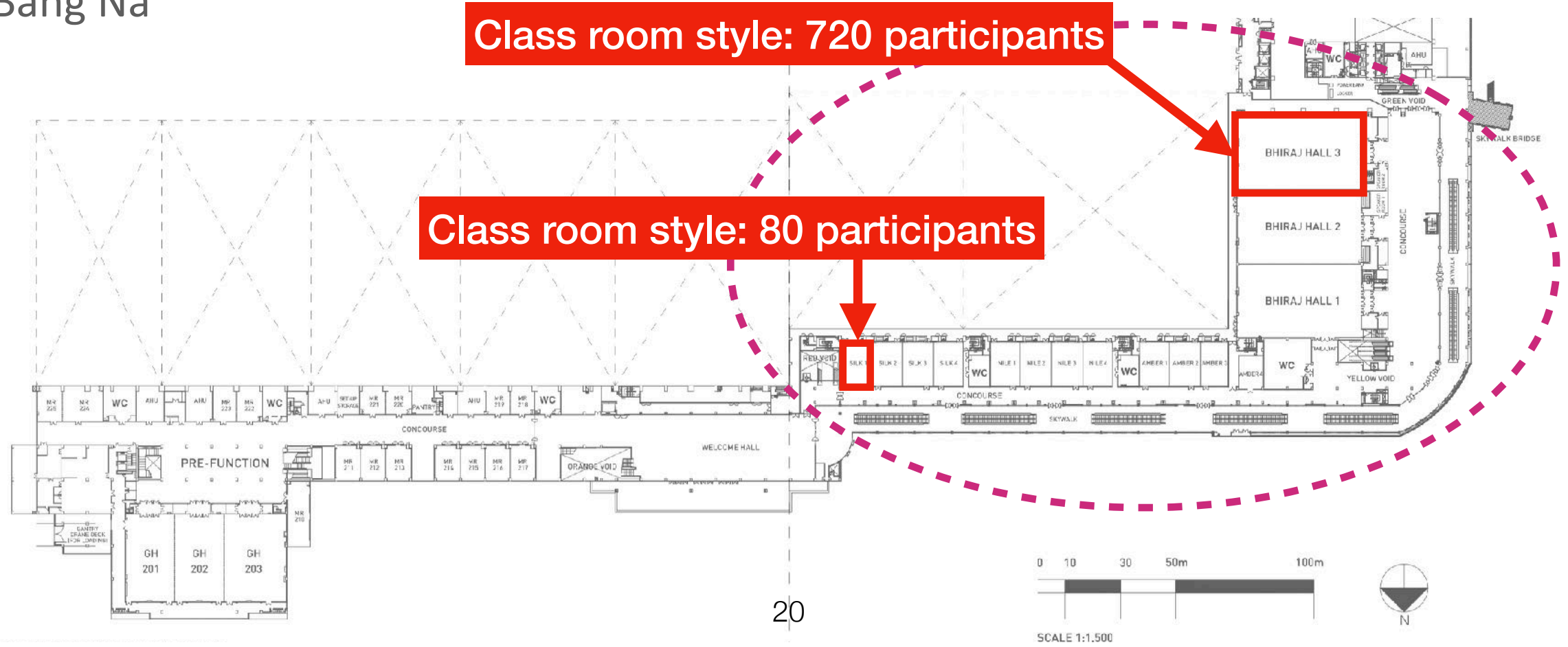




# 4: Bangkok International Trade & Exhibition Centre



- BTS Bang Na









# Proposed dates

## End of May or June is a perfect period to organize the event

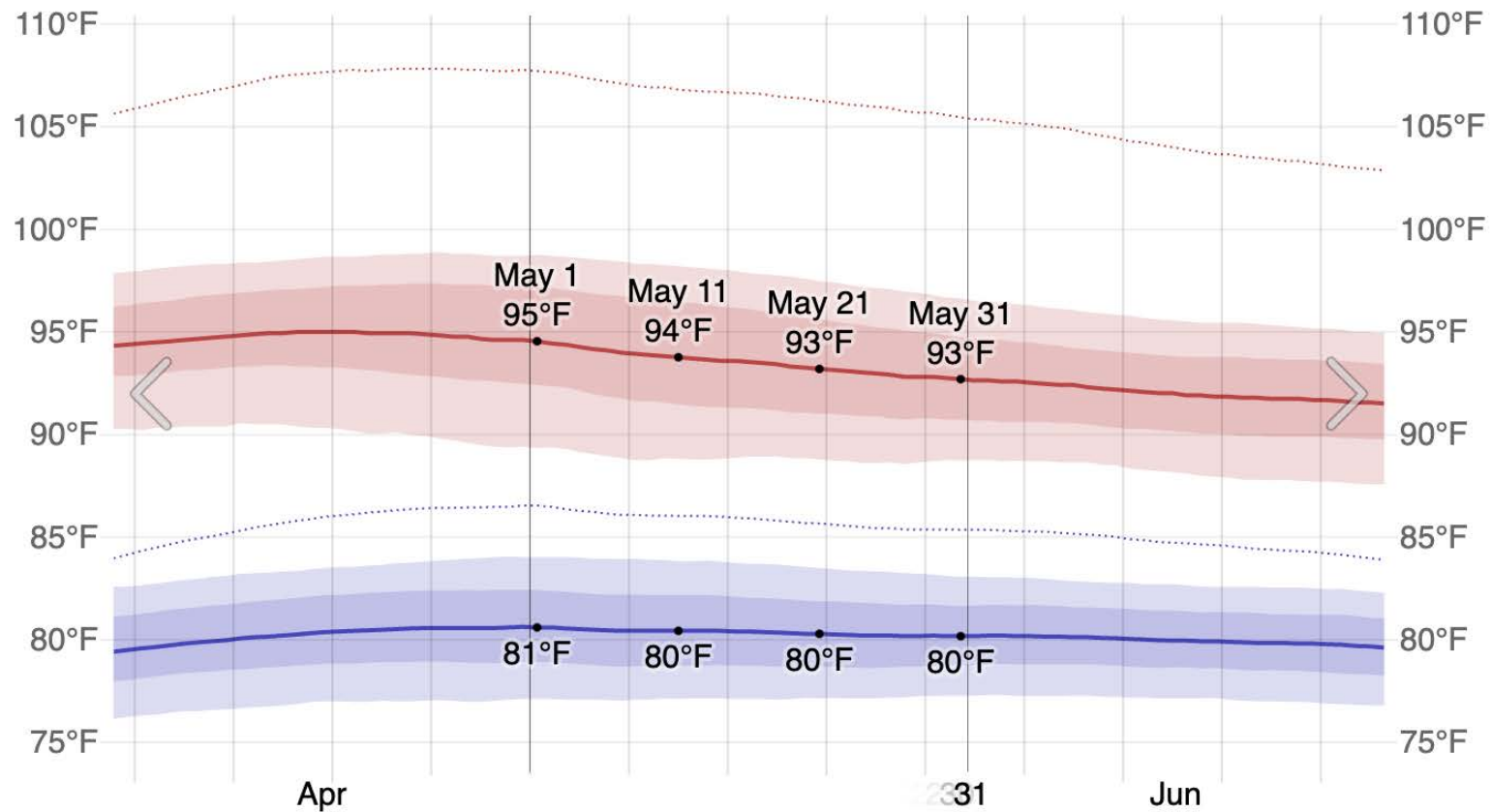
- Semester break of Chulalongkorn University
- Good weeks: 25-29 May / 1-5 June
- 18-22 May (Potentially overlap with the end of semester)
- Pre-Workshop: the weekend before the conference

May 2026						
S	M	T	W	T	F	S
					1	2
3	4	5	6	7	8	9
10	11	12	13	14	15	16
17	18	19	20	21	22	23
24	25	26	27	28	29	30
31						

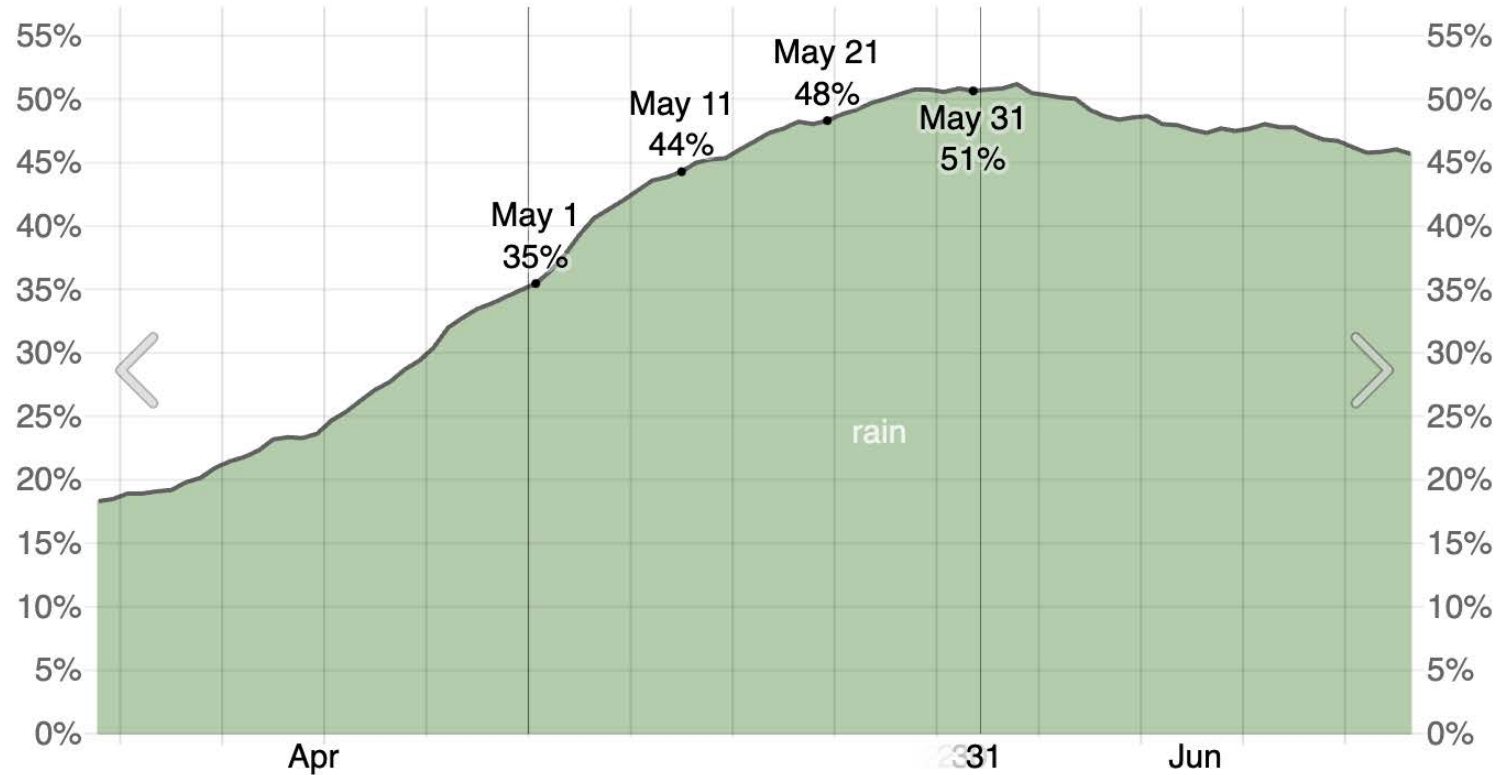
June 2026						
S	M	T	W	T	F	S
	1	2	3	4	5	6
7	8	9	10	11	12	13
14	15	16	17	18	19	20
21	22	23	24	25	26	27
28	29	30				



# Expected Weather in May



**Average High and Low Temperature in May in Bangkok**



**Probability of Precipitation in May in Bangkok**

Ref: <https://weatherspark.com/m/113416/5/Average-Weather-in-May-in-Bangkok-Thailand>



# Thailand in the end of May - June

**Summer showers bring the freshness across country.** North part of Thailand have several nice places to visit, both culture or nature.



**National parks across country are opening in June.** How about few days hiking trip?

**Bangkok is a nice place to visit in every seasons**



**Nice weather in Thailand's southeastern Gulf**  
If you're looking for sun, clear seas and nice beaches, Koh Samui, Koh Phangan and Koh Tao



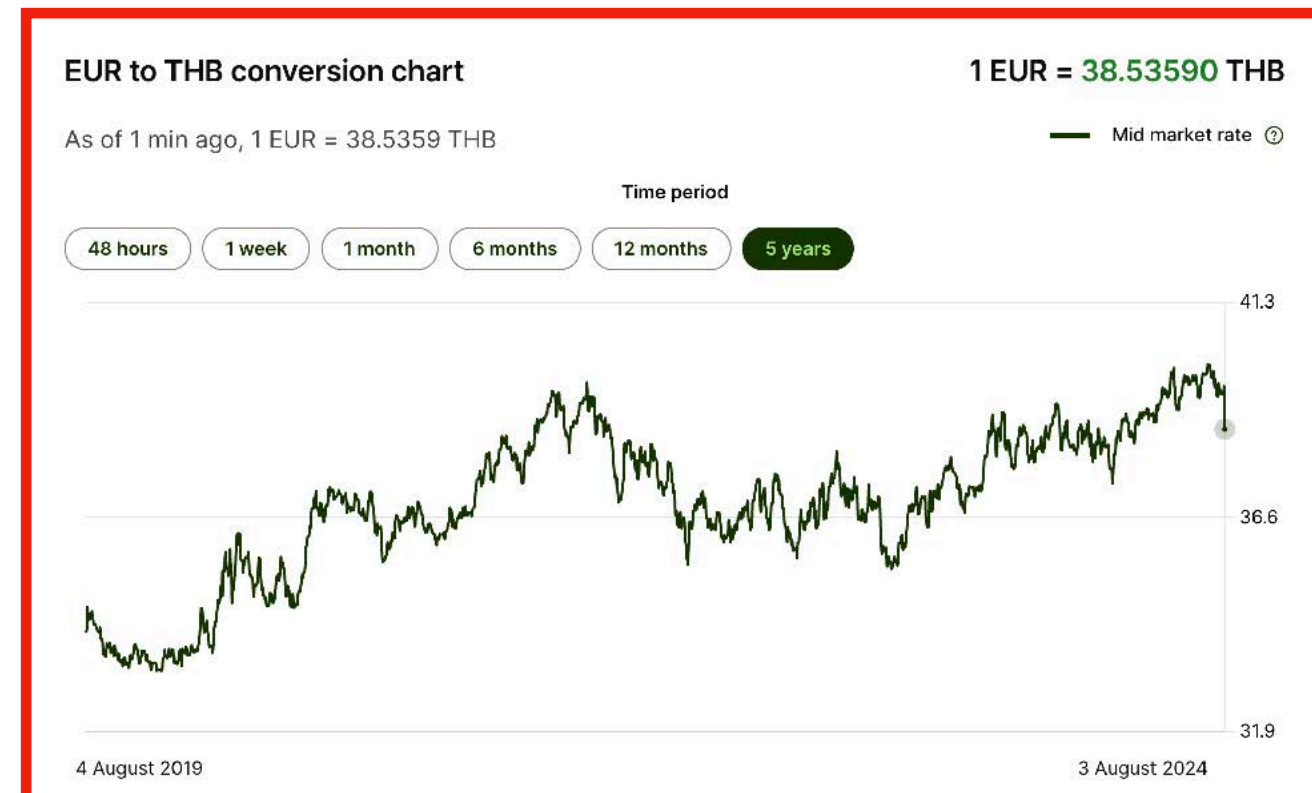


# Conference format and fee

- **Conference format:** in-person event
  - Conference contributors whose submissions are accepted for presentation at the conference, should thus plan to travel to Bangkok and present their work on-site.
    - Plenary sessions / Parallel sessions / Poster session (Poster stays the whole conf.)
- **Fee:** we would like to propose
  - **Participant:**  
early: 26,000 THB (~675 €), late: 30,000 THB (~778 €)
  - **Student (master or PhD candidates):**  
early: 15,000 THB (~389 €), late: 17,000 THB (~441 €)
  - **Pre-CHEP:** at Chulalongkorn University (Places may change followed the main CHEP)  
2,700 THB (~70 €)

Fee will be in Thai Baht (THB). EUR is estimated based on the exchange rate on Aug 3rd, 2024, 1 EUR = 38.54 THB. Excursion may arrange separately.

- **The fee will cover**
  - Welcome reception
  - Conference dinner
  - Lunches and breaks
  - Proceeding





# Social Events

- **Welcome Reception** at the conference building or closed-by hotel, restaurant
- **Conference Dinner** Either a river cruise dinner along the Chao Phraya river, the “River of Kings”. See old temples, palace and communities along the river banks, or a nice restaurant in Bangkok





# Local organizing committee, funding support

## Local organizing committees from

- Chulalongkorn University; CU
- Thailand Center of Excellence in Physics; ThEP
- Thailand Institute of Nuclear Technology (Public Organization); TINT
- National Astronomical Research Institute of Thailand (Public Organization); NARIT
- Synchrotron Light Research Institute (Public Organization); SLRI



If the proposal is accepted, we expect more local organizing committee from various research institutes and universities who are members of Thai High Energy Physics consortium.



## It is positive to find funding support

- For CMS Week 2019, FPCP 2024, AEP SHEP 2024, we got support from the university, research institutes, and private companies. Possibility for limit student support (especially from Asia) to attend the conference (conference fee)



# Answers to the pre-meeting questions

## Venue

- We propose Bangkok as the conference host city, selecting a venue with easy access to the metro to avoid traffic issues. Currently, Chulalongkorn University and Queen Sirikit National Convention Center are our (my) preferred locations.

## Conference fee

- We've based the calculation on full access to university facilities, with a small buffer to account for inflation. We expect this fee to remain stable for the next two years, even if we switch to a conference center.

## Day care

- I currently know of a few daycare centers located just a few metro stops away from the university. At the university, I'll need to inquire further, as their childcare services are typically reserved for the children of university staff.





# Summary

## **We propose to host CHEP 2026 in Bangkok, Thailand**

### **Conference venue is at the center of Bangkok**

- All proposed conference venues can be accessed with metro systems, fulfil the requirements for CHEP, and surrounded by various hotels

### **What will we get to host CHEP 2026:**

- Increasing visibility of computing in high energy physics and nuclear research in Thailand
- CHEP 2026 will be the major international conference with 500++ participants hosted by Thai high energy physics consortium
- Hosting a major conference is one of the outputs expected from our funding agency