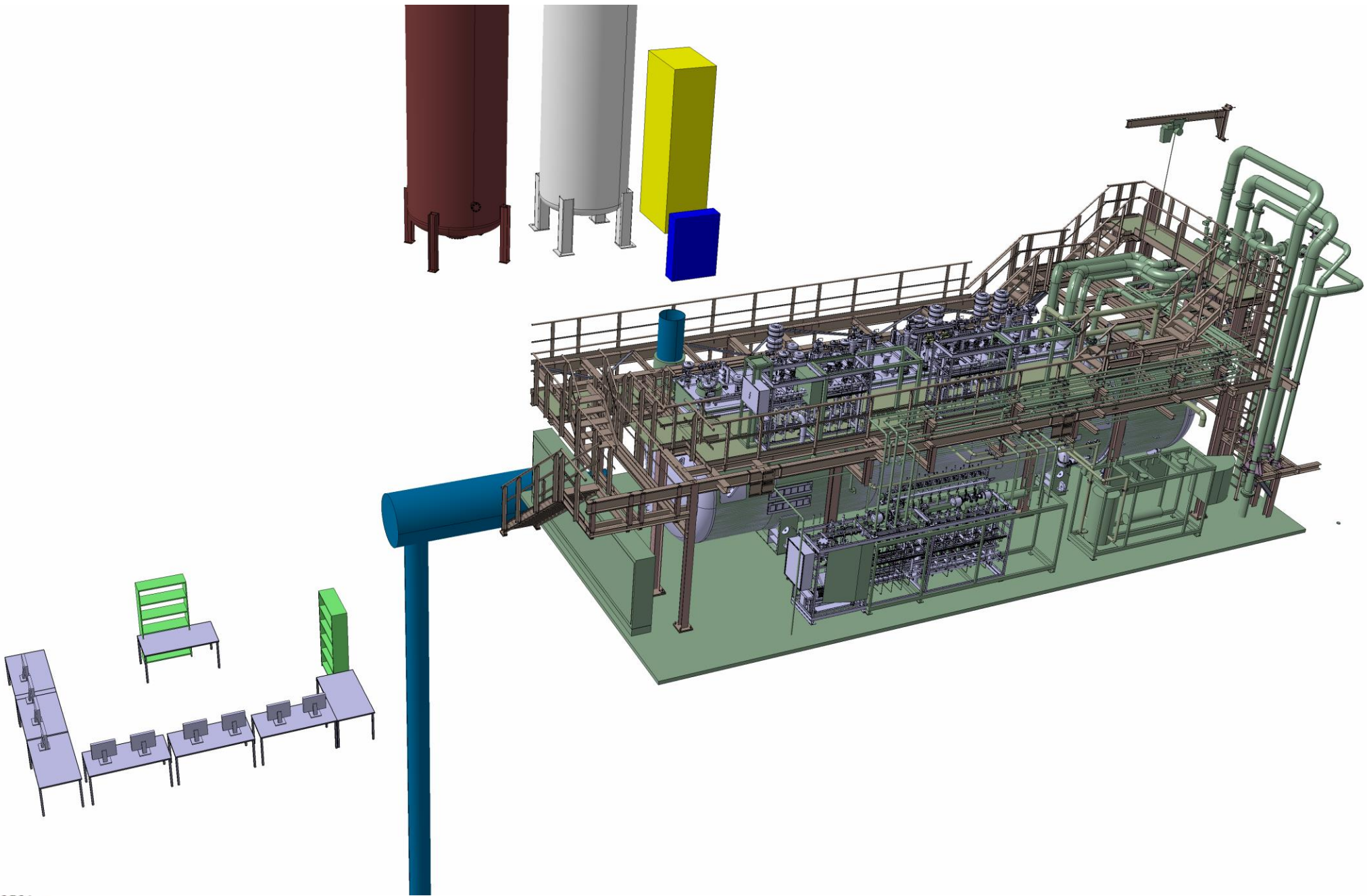


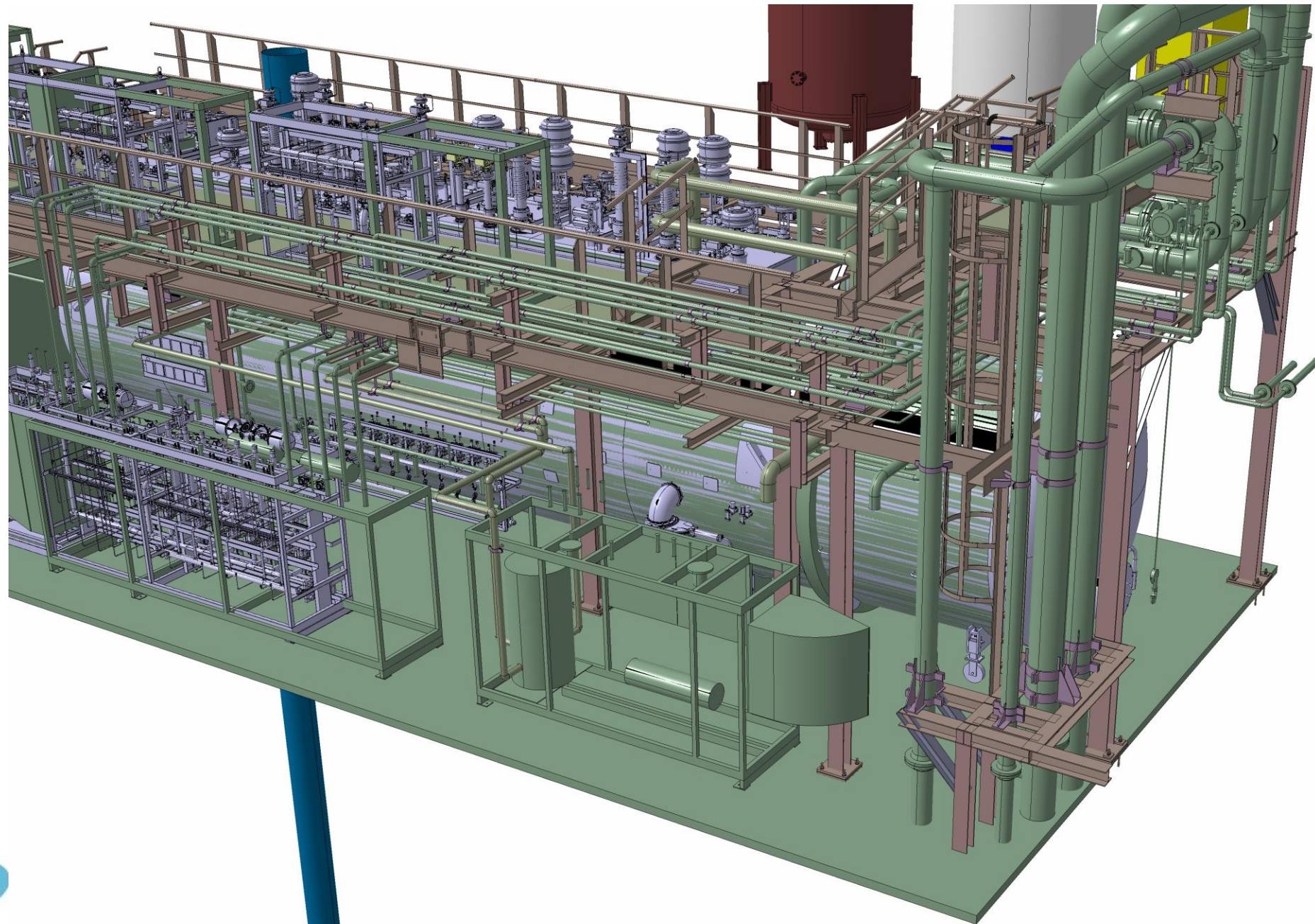
# SD57

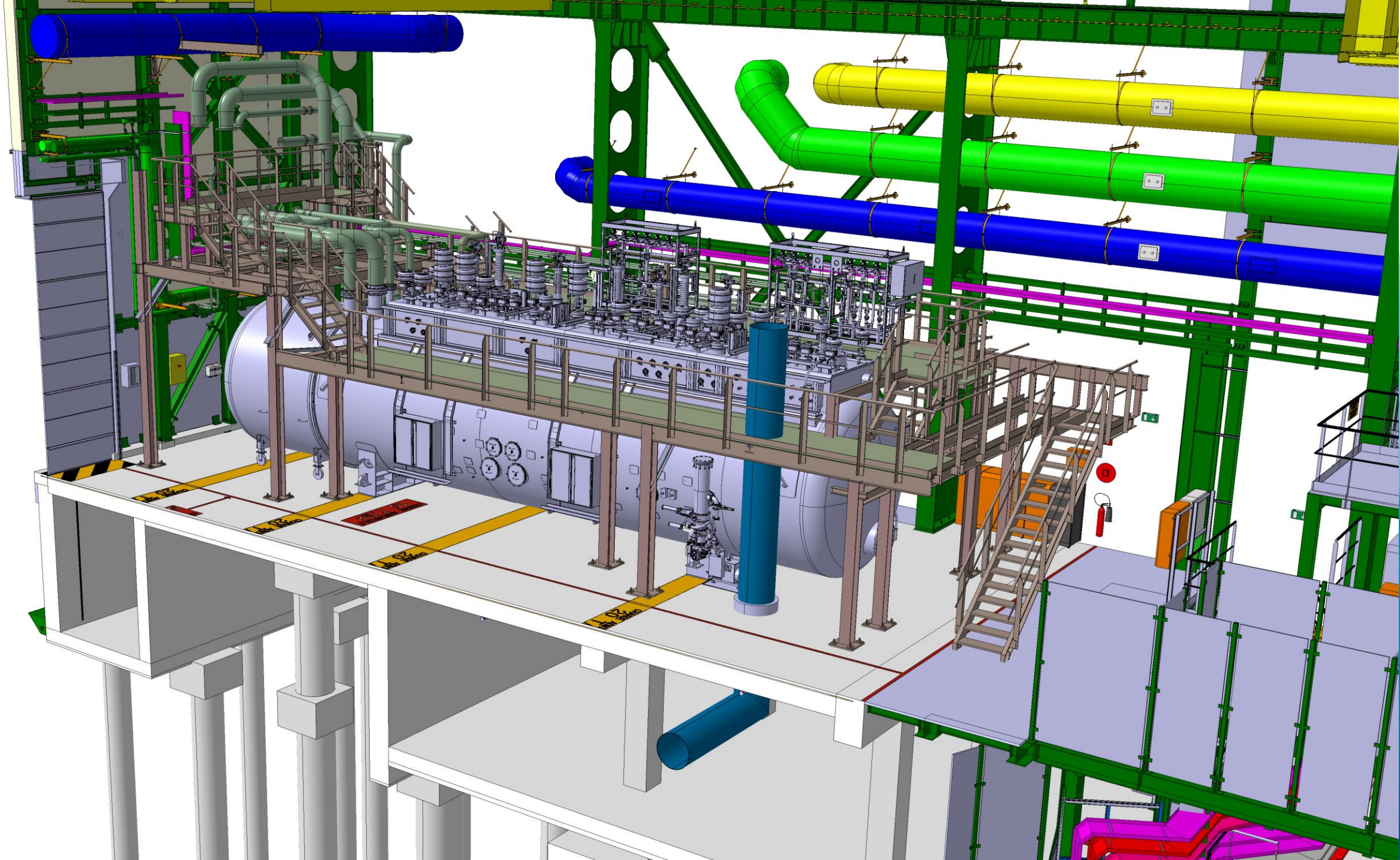
# STATUS 3D CRYO

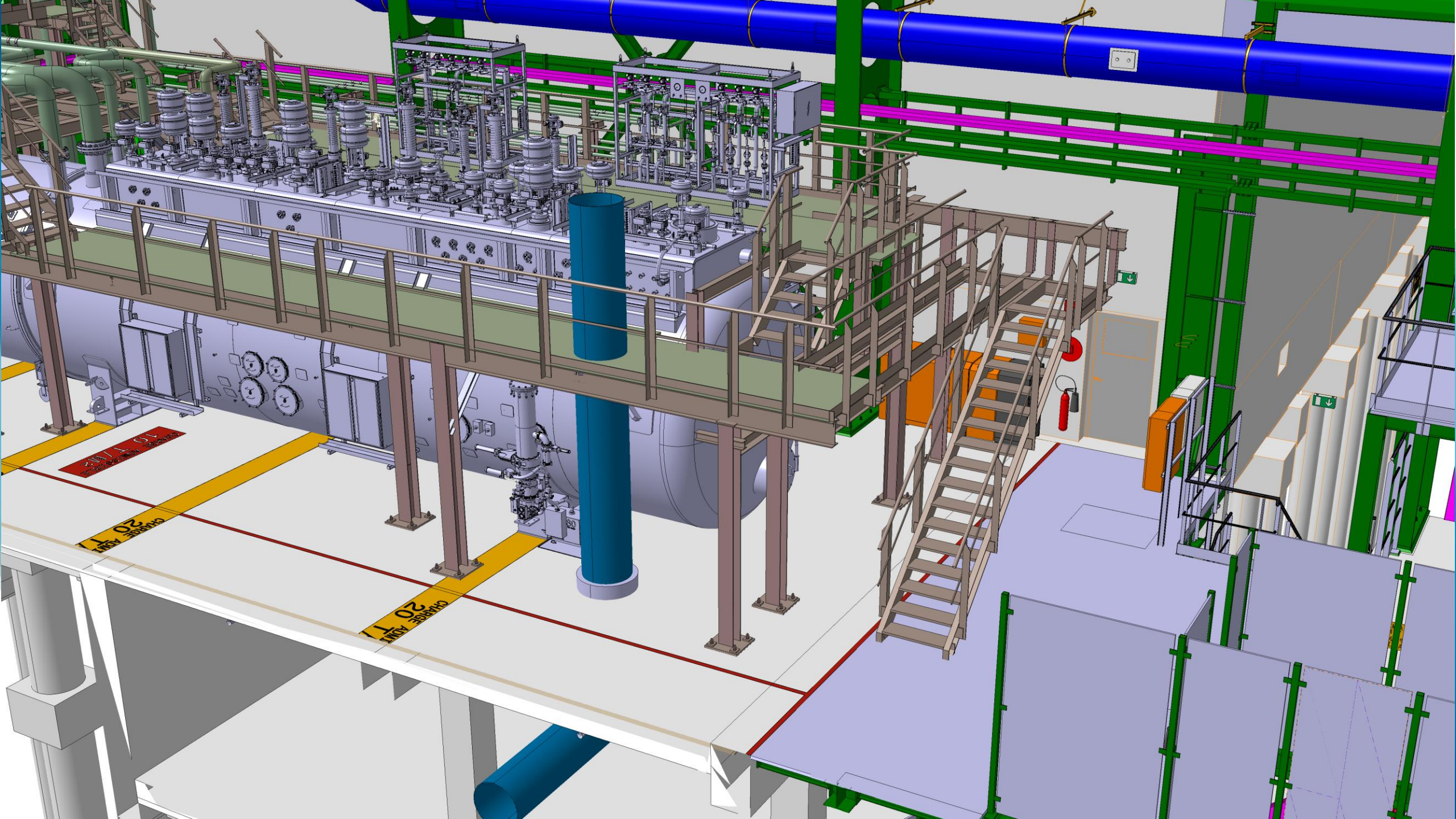
07/10/2024

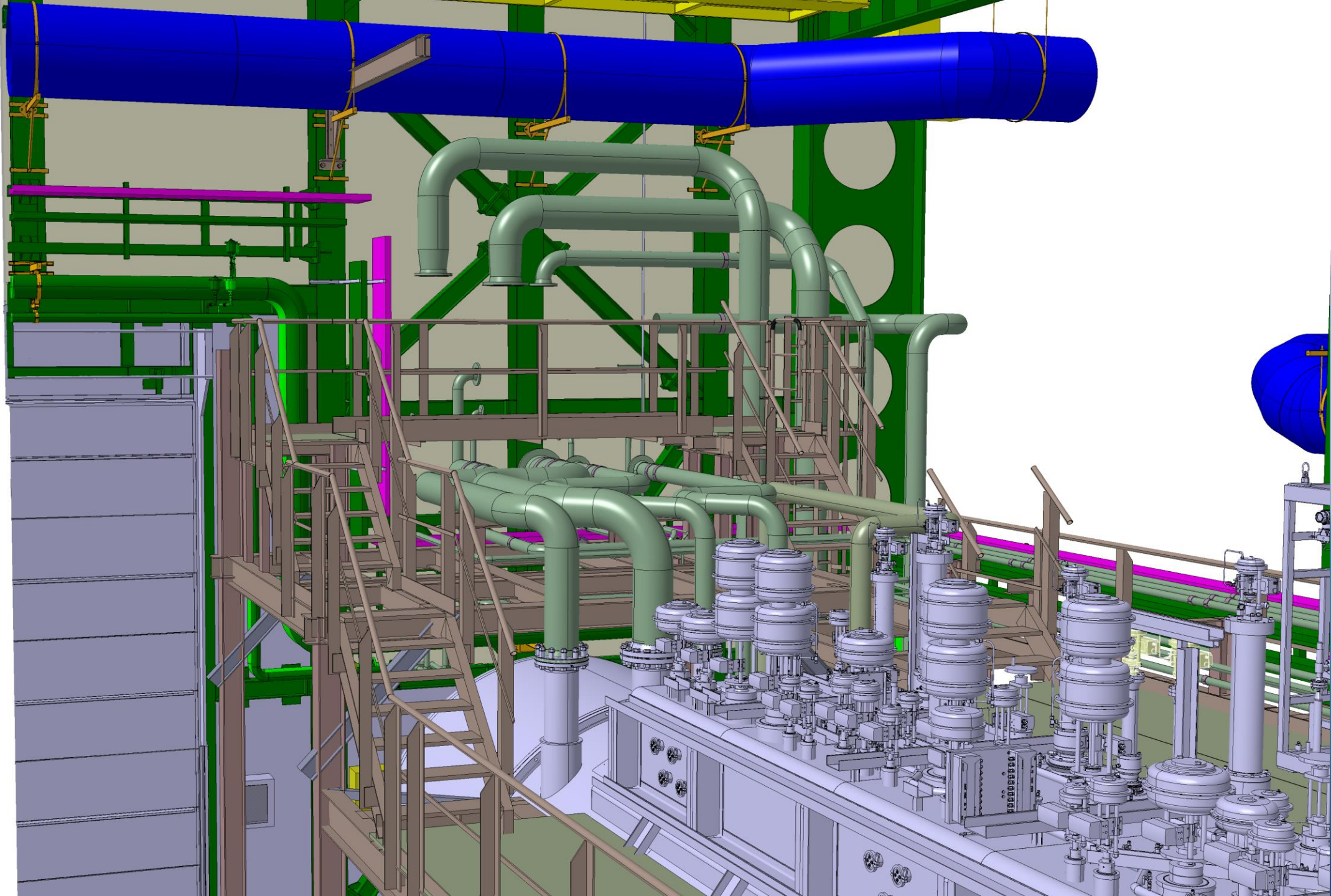
Stephane Maridor

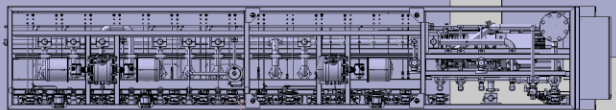
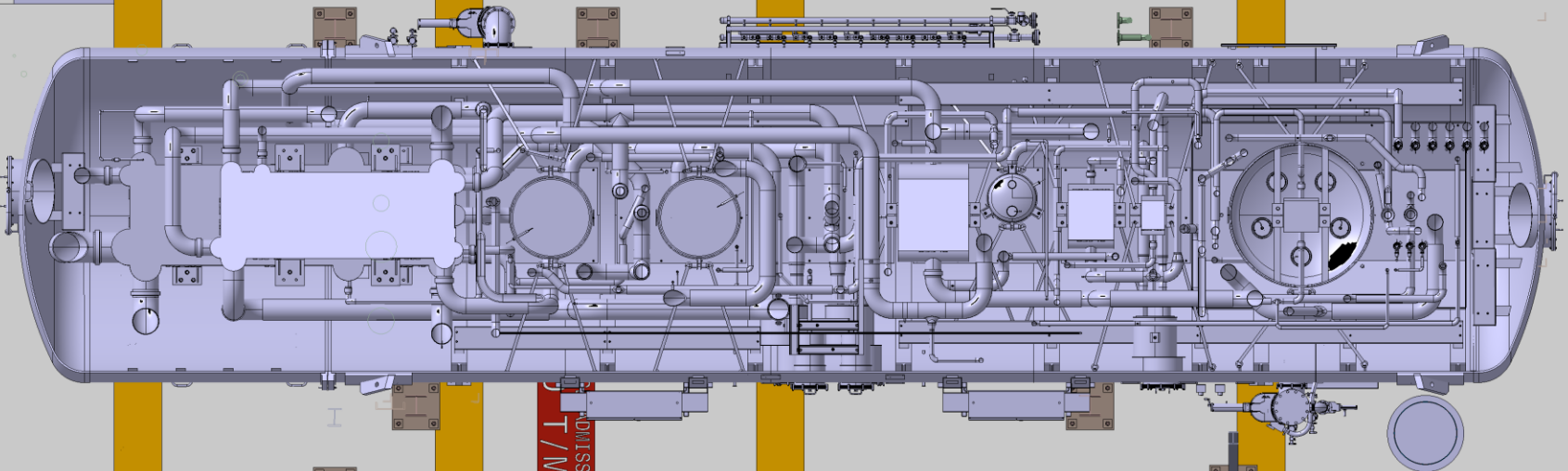












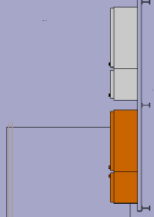
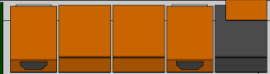
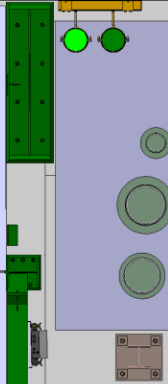
CHARGE ADMISSIBLE  
20 T/M2

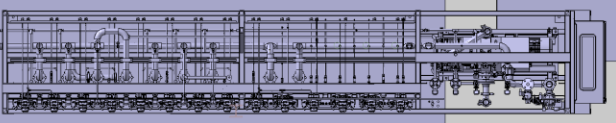
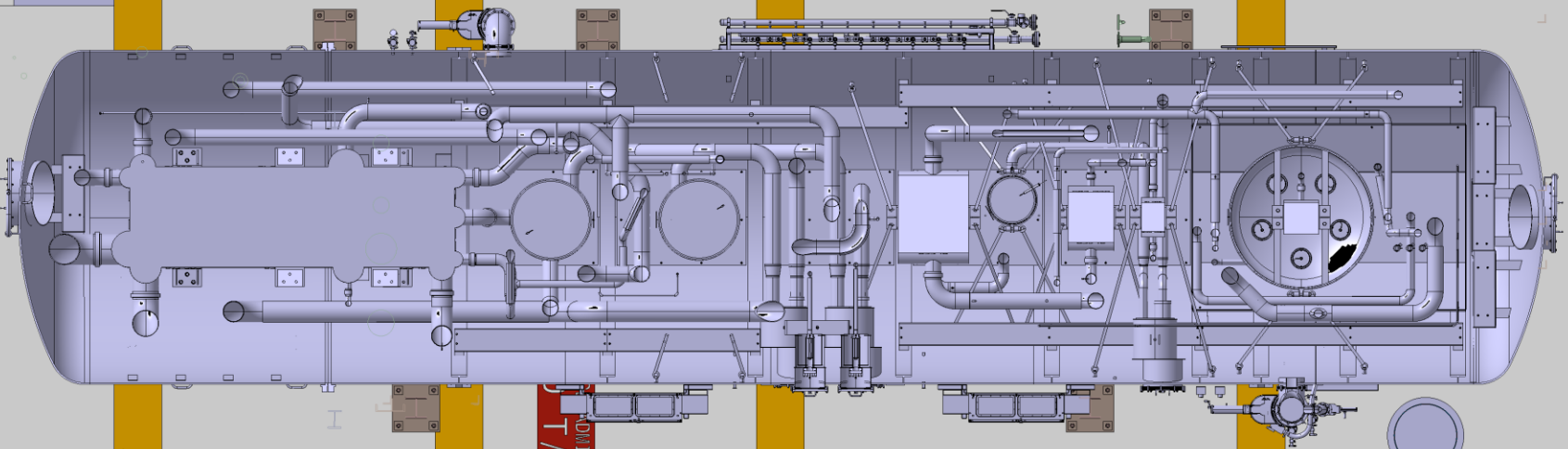
CHARGE ADMISSIBLE  
20 T/M2

CHARGE ADMISSIBLE  
20 T/M2

CHARGE ADMISSIBLE  
20 T/M2

CHARGE ADMISSIBLE  
10 T/M2  
50 T/M2





CHARGE ADMISSIBLE  
T / M2

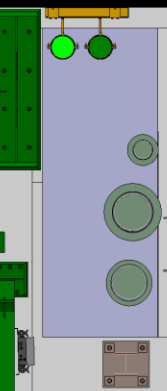
CHARGE ADMISSIBLE  
20 T / M2

CHARGE ADMISSIBLE  
20 T / M2

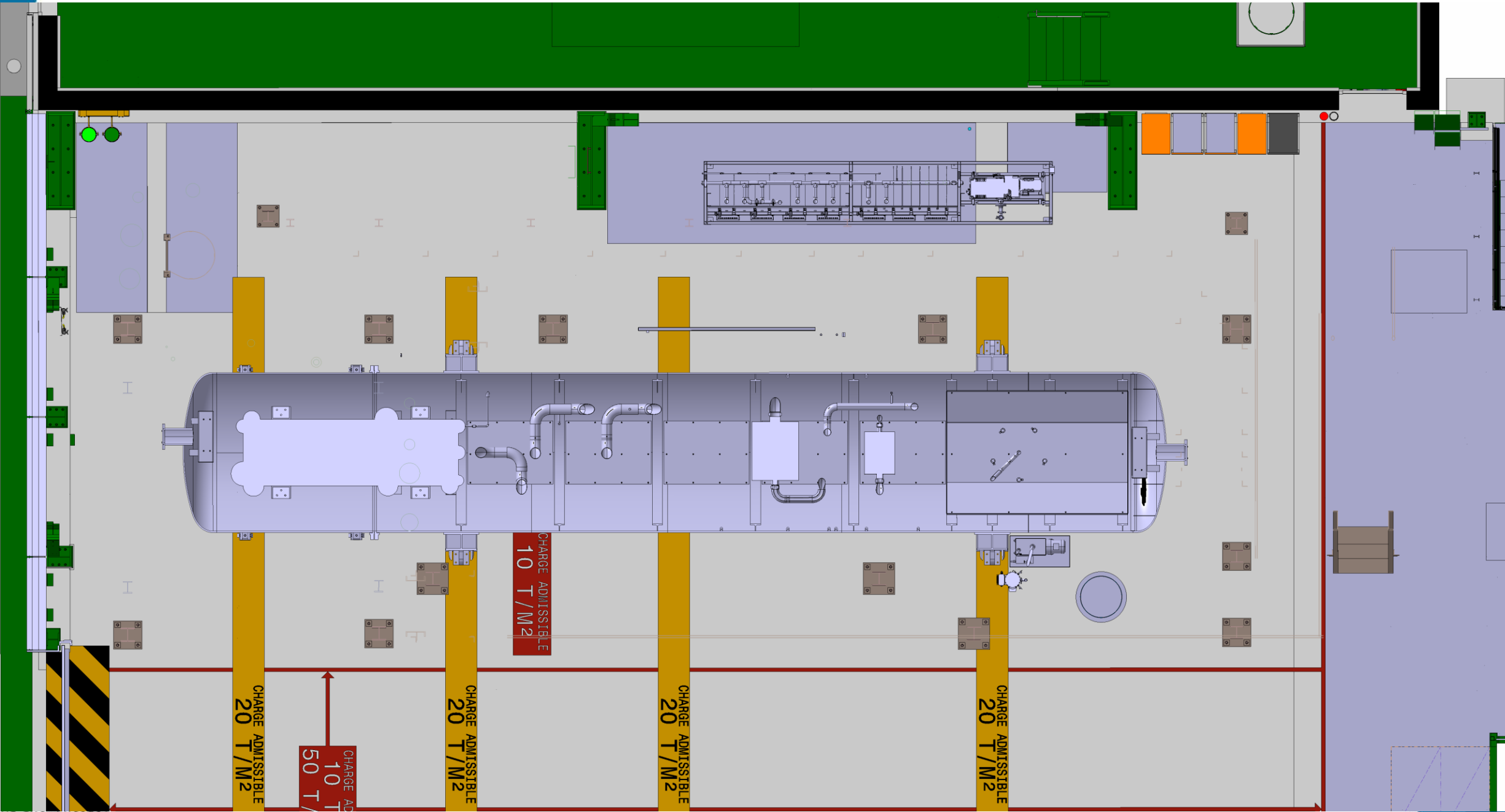
CHARGE ADMISSIBLE  
20 T / M2

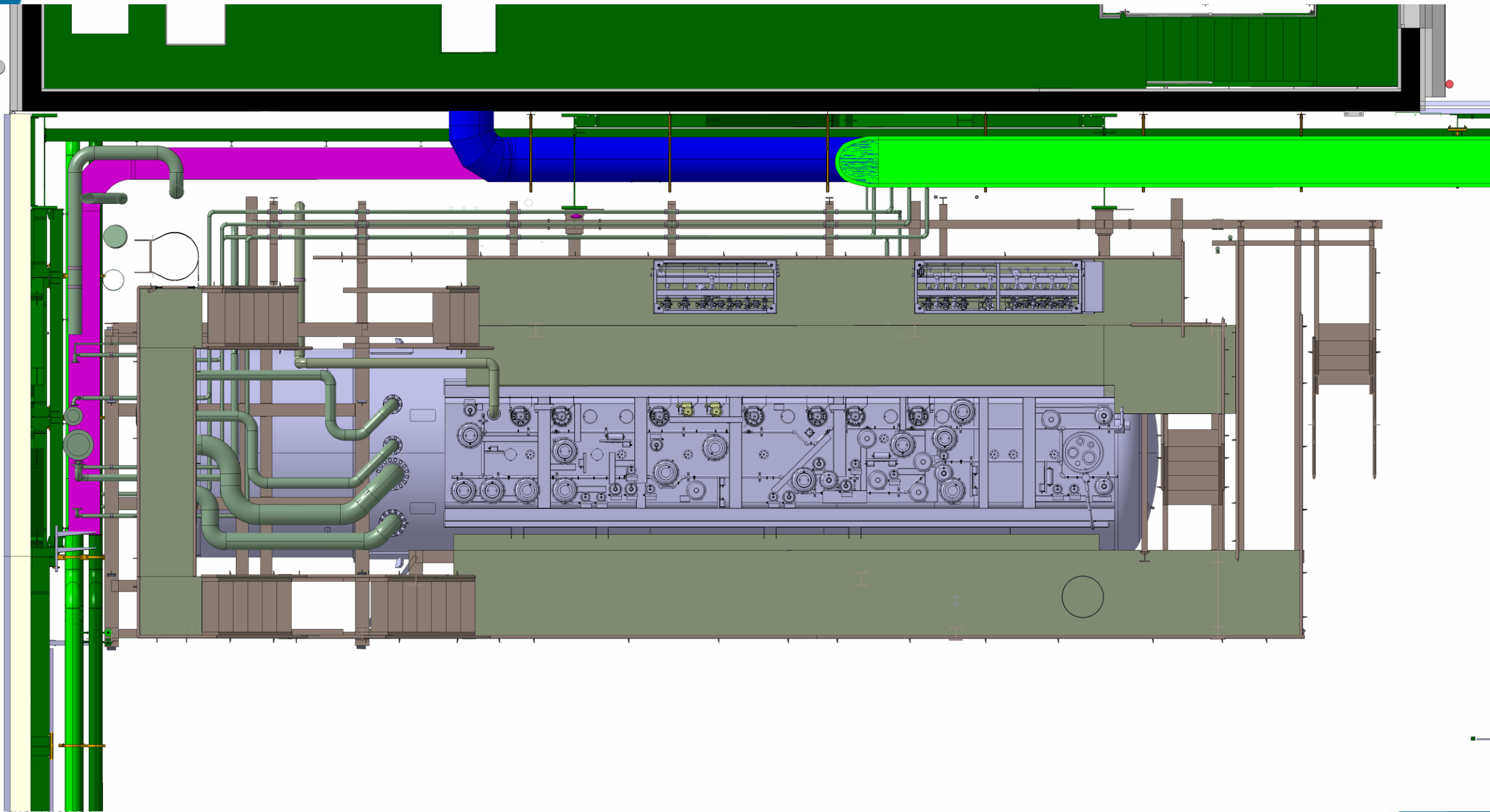
CHARGE ADMISSIBLE  
20 T / M2

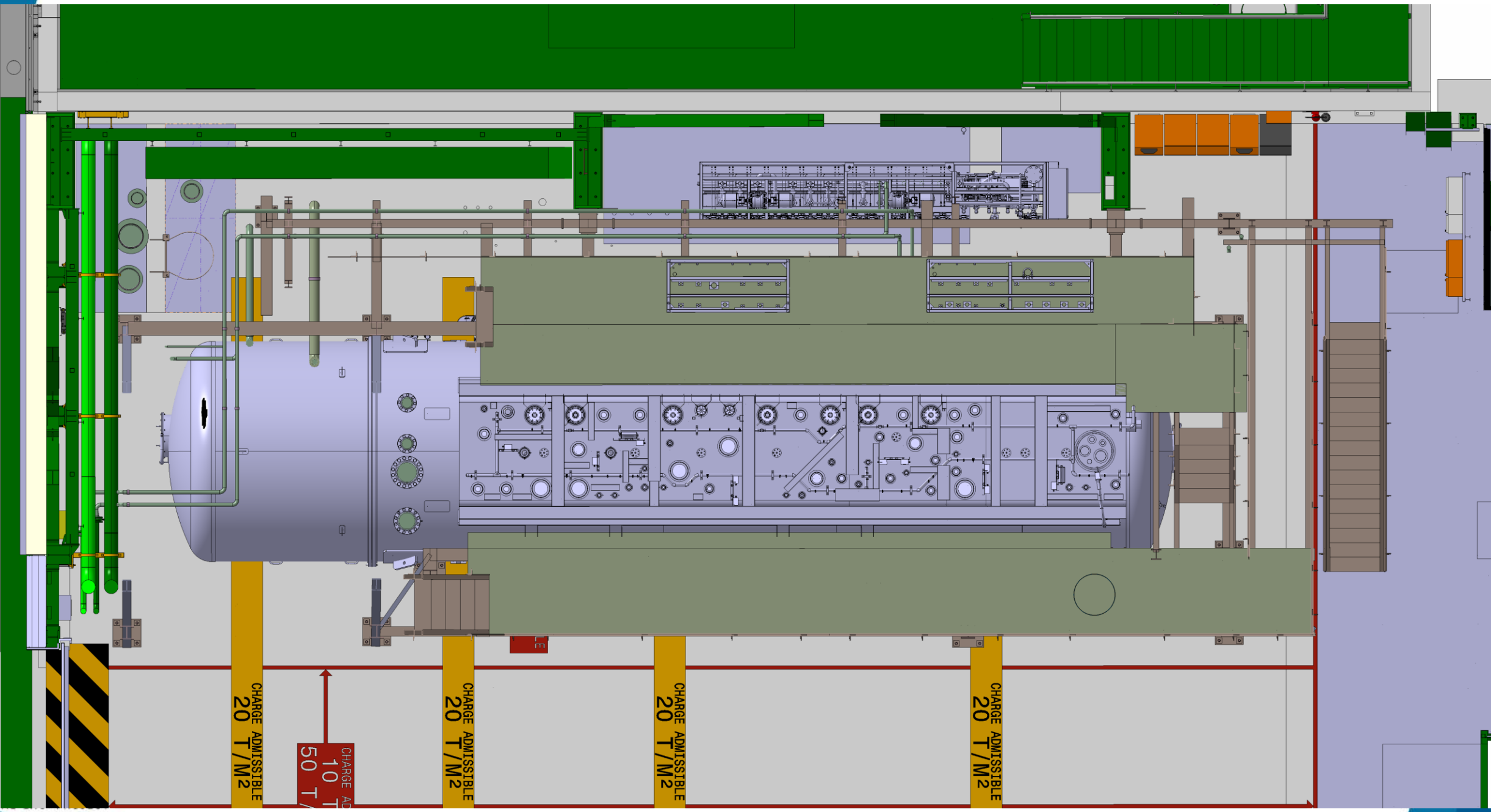
CHARGE AD  
10 T  
50 T /











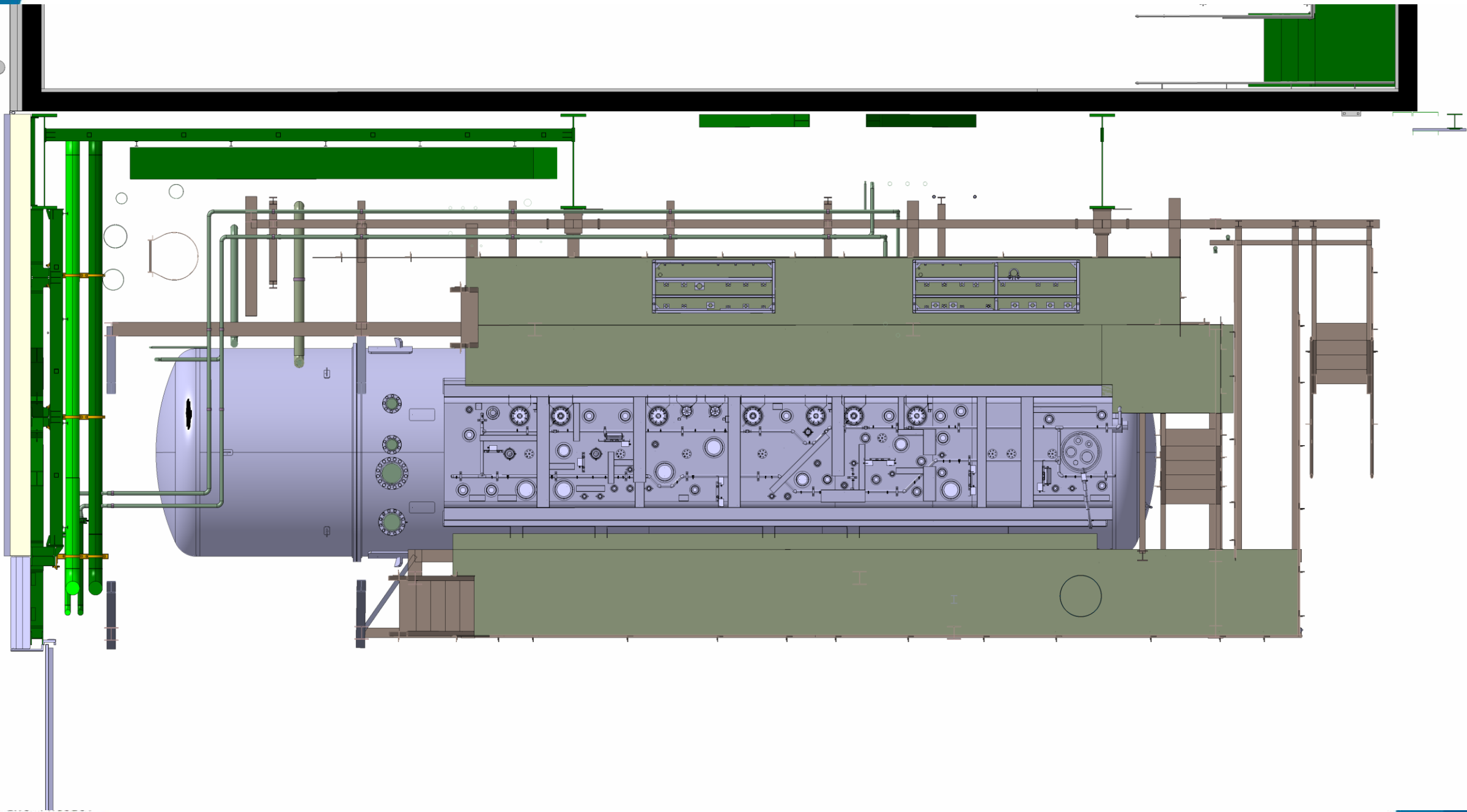
CHARGE ADMISSIBLE  
20 T/M2

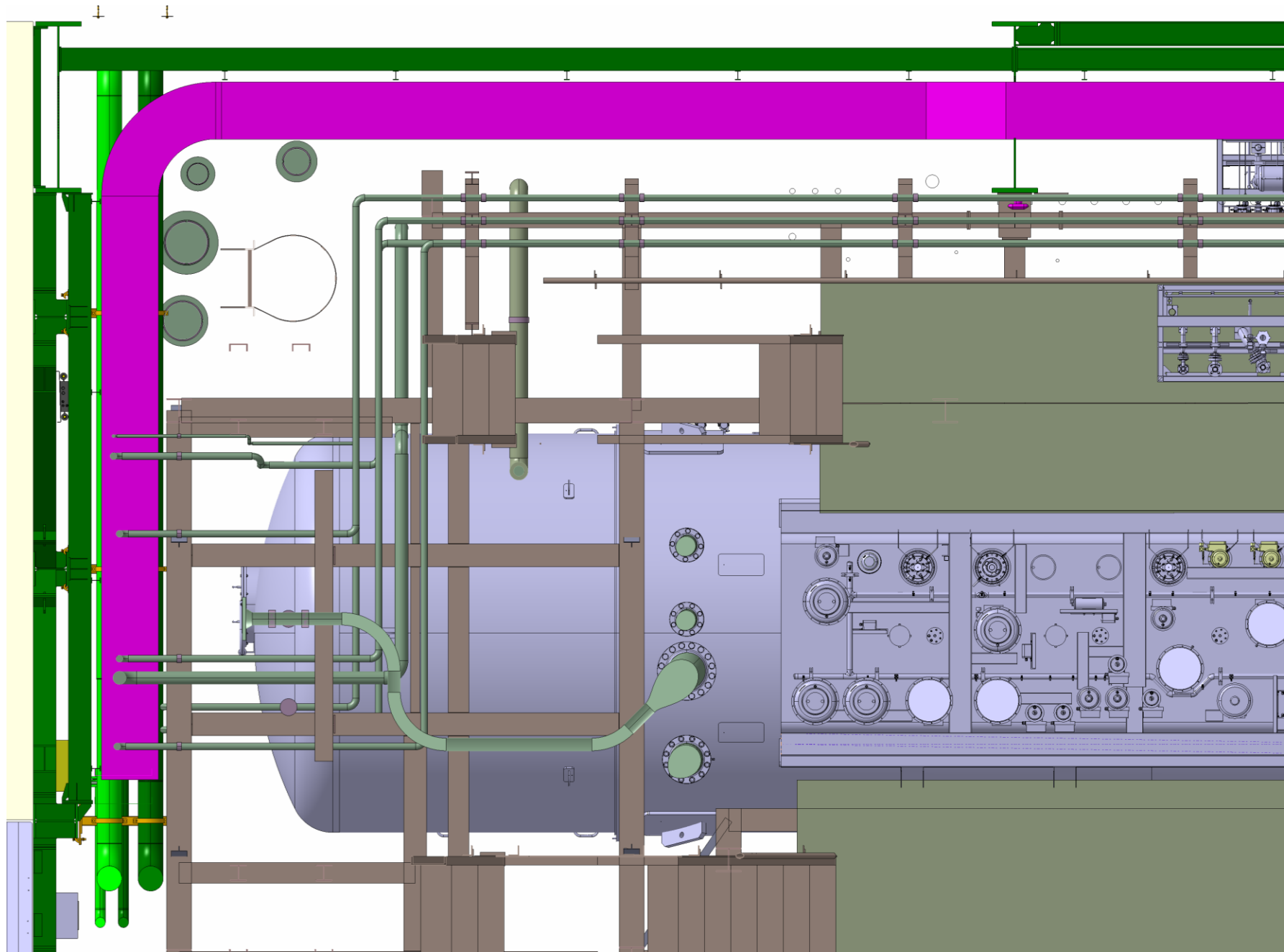
CHARGE AD  
10 T/M2

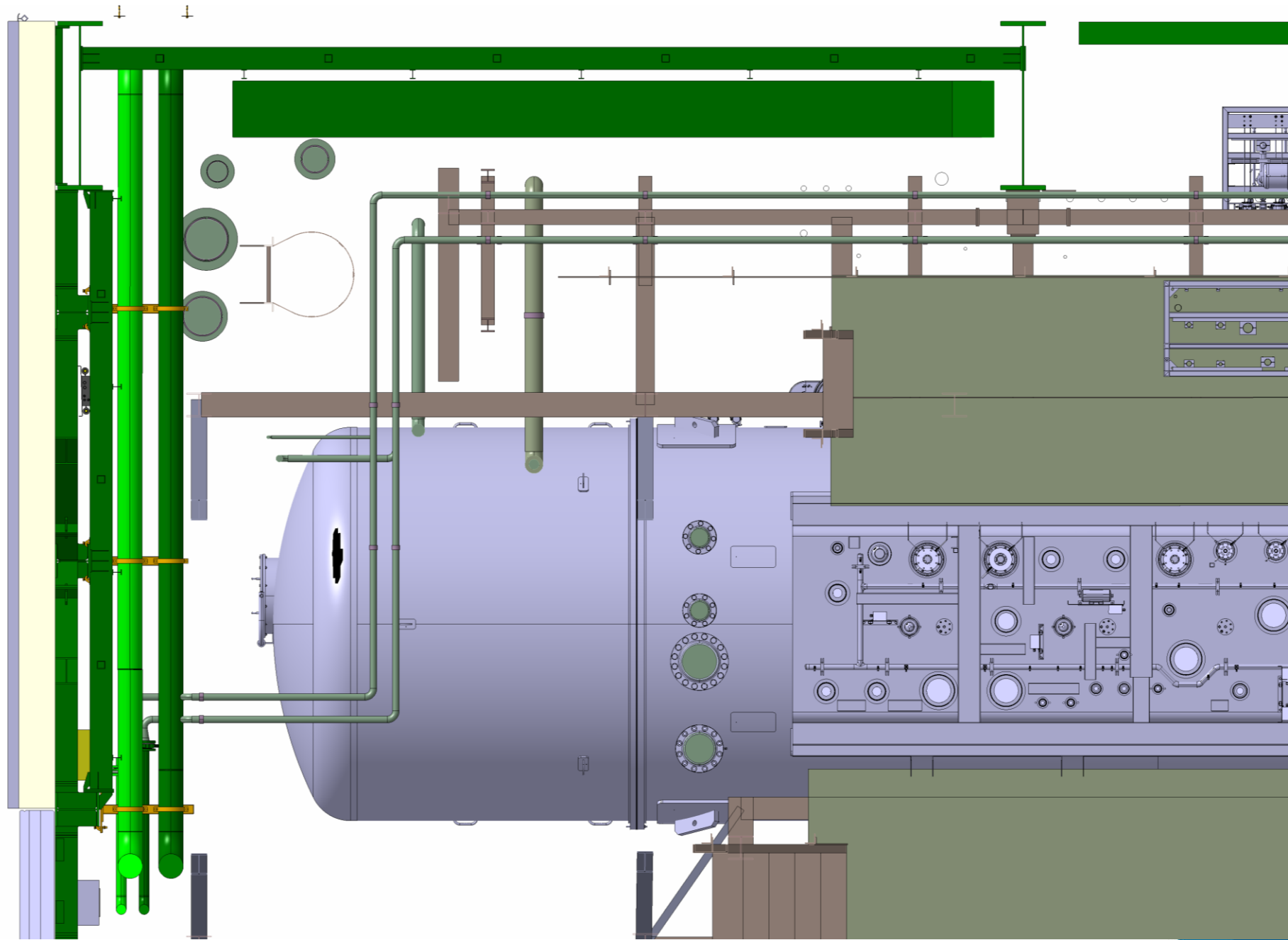
CHARGE ADMISSIBLE  
20 T/M2

CHARGE ADMISSIBLE  
20 T/M2

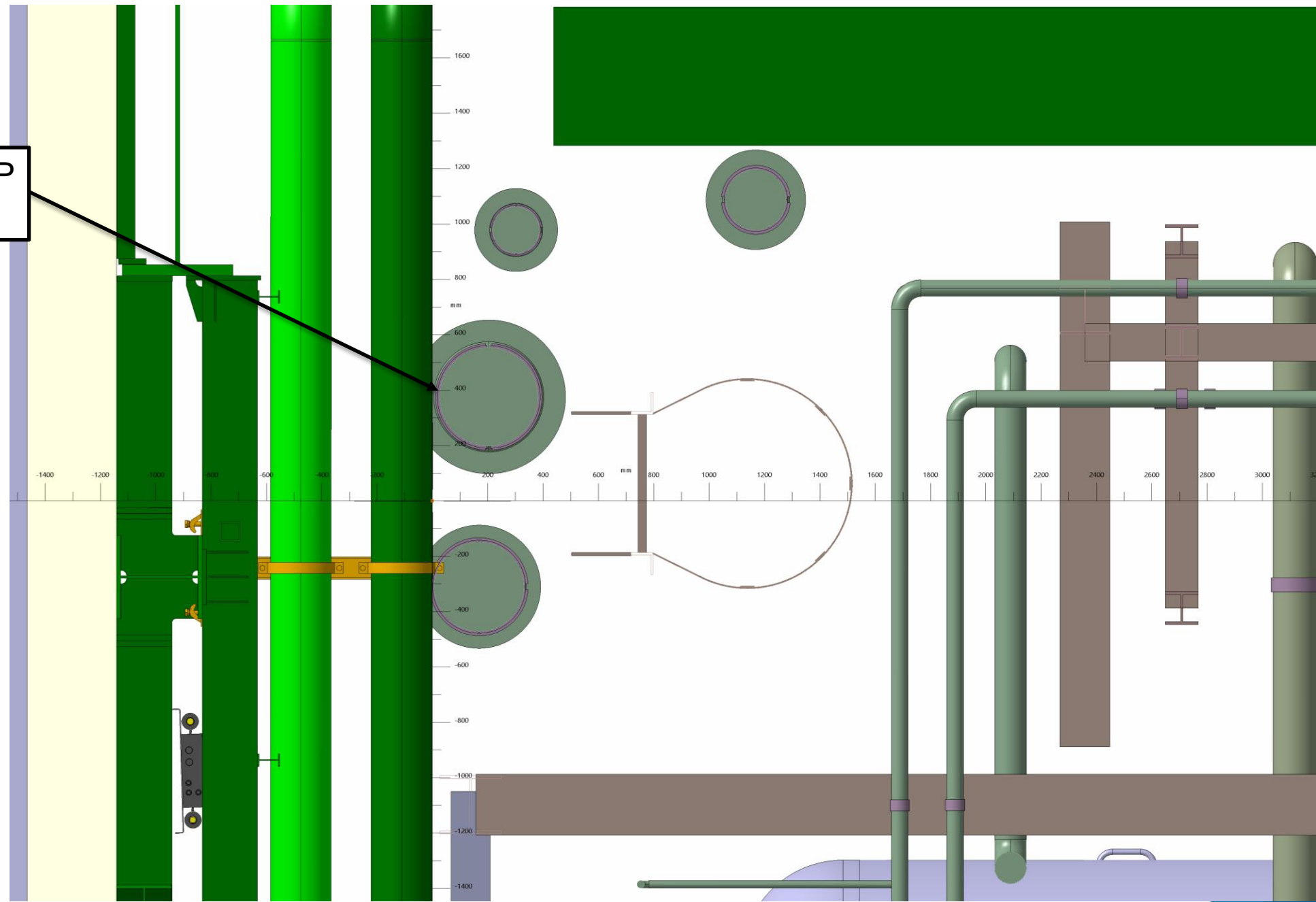
CHARGE ADMISSIBLE  
20 T/M2

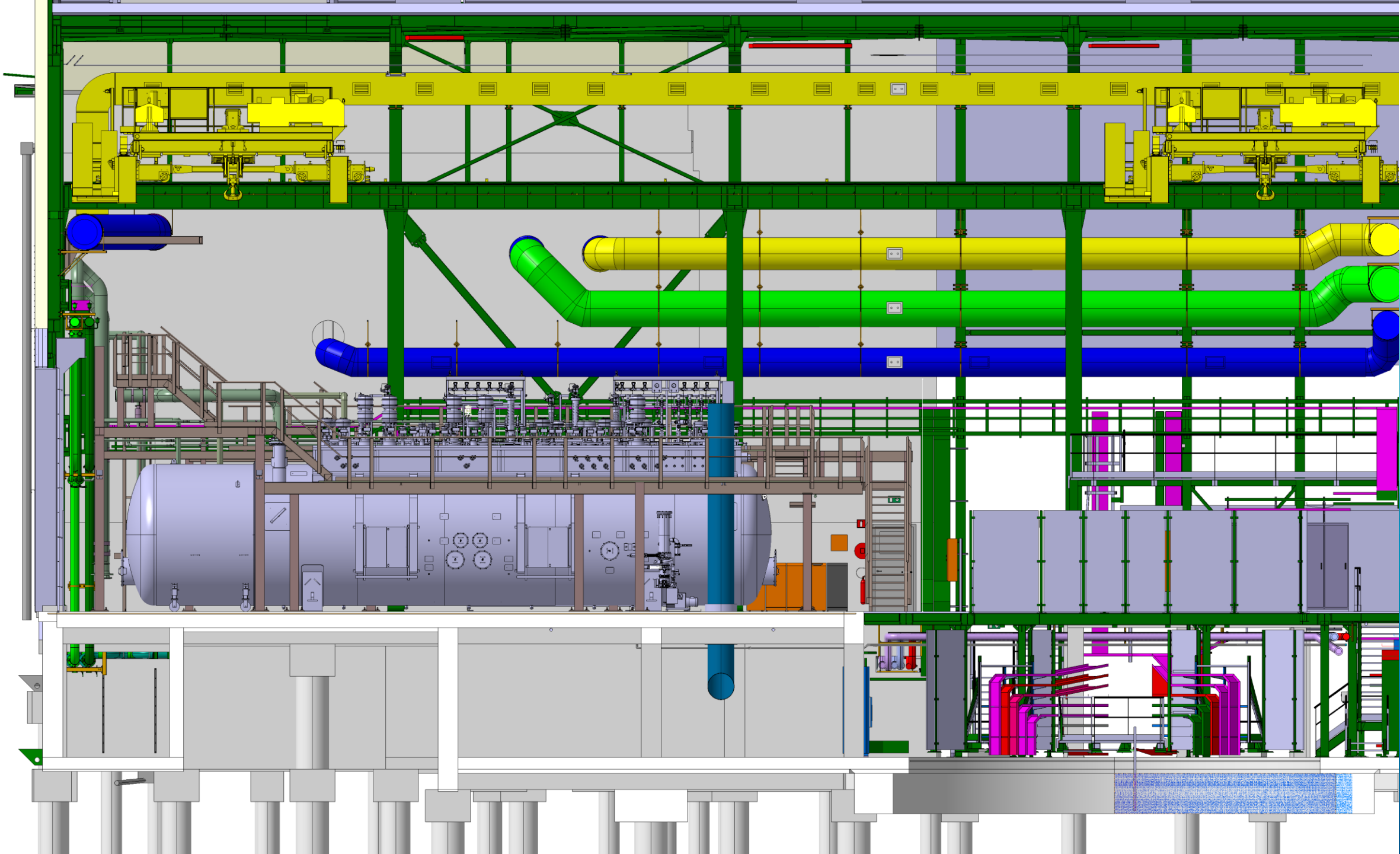






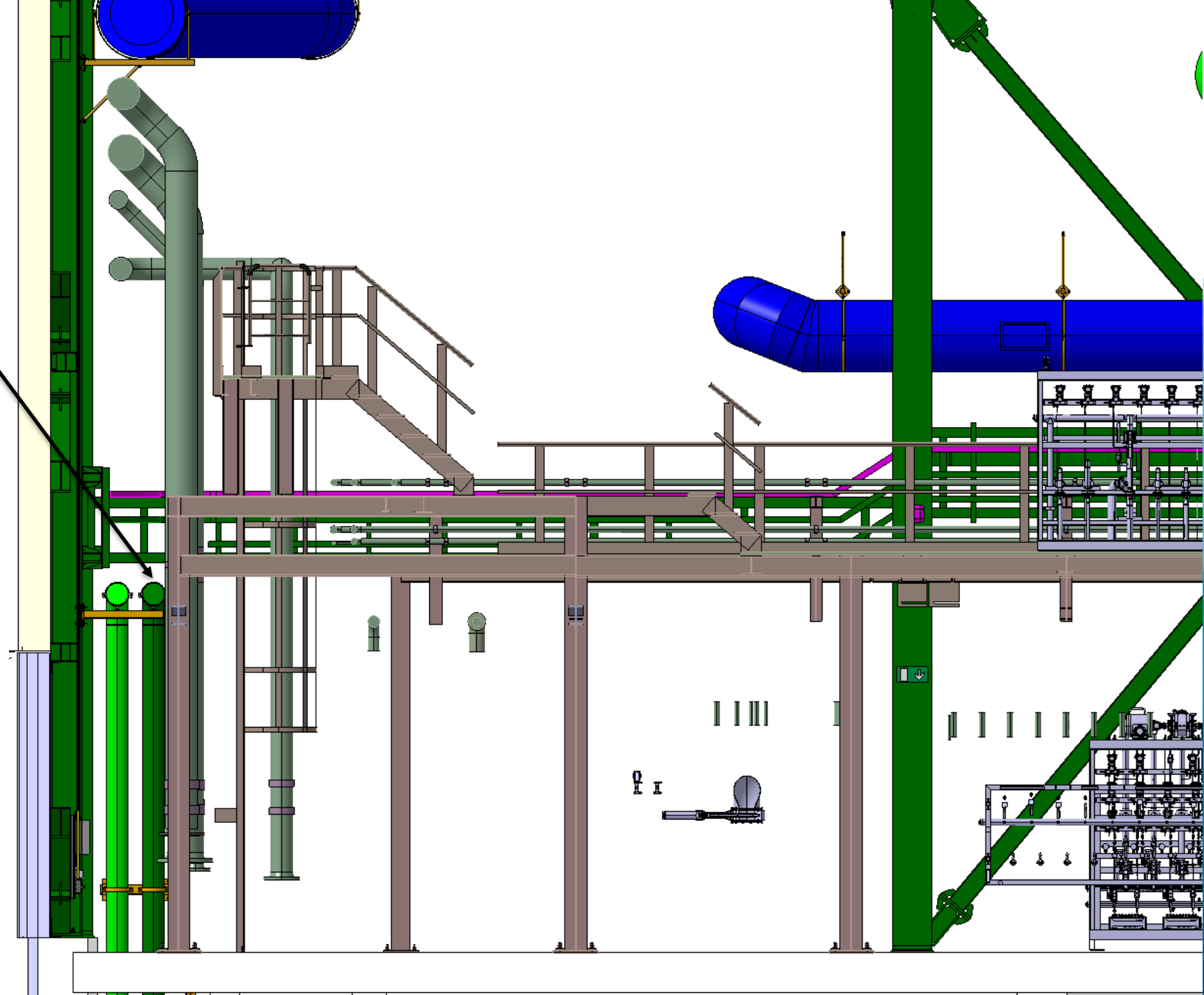
TUYAUTERIES TROP PROCHE

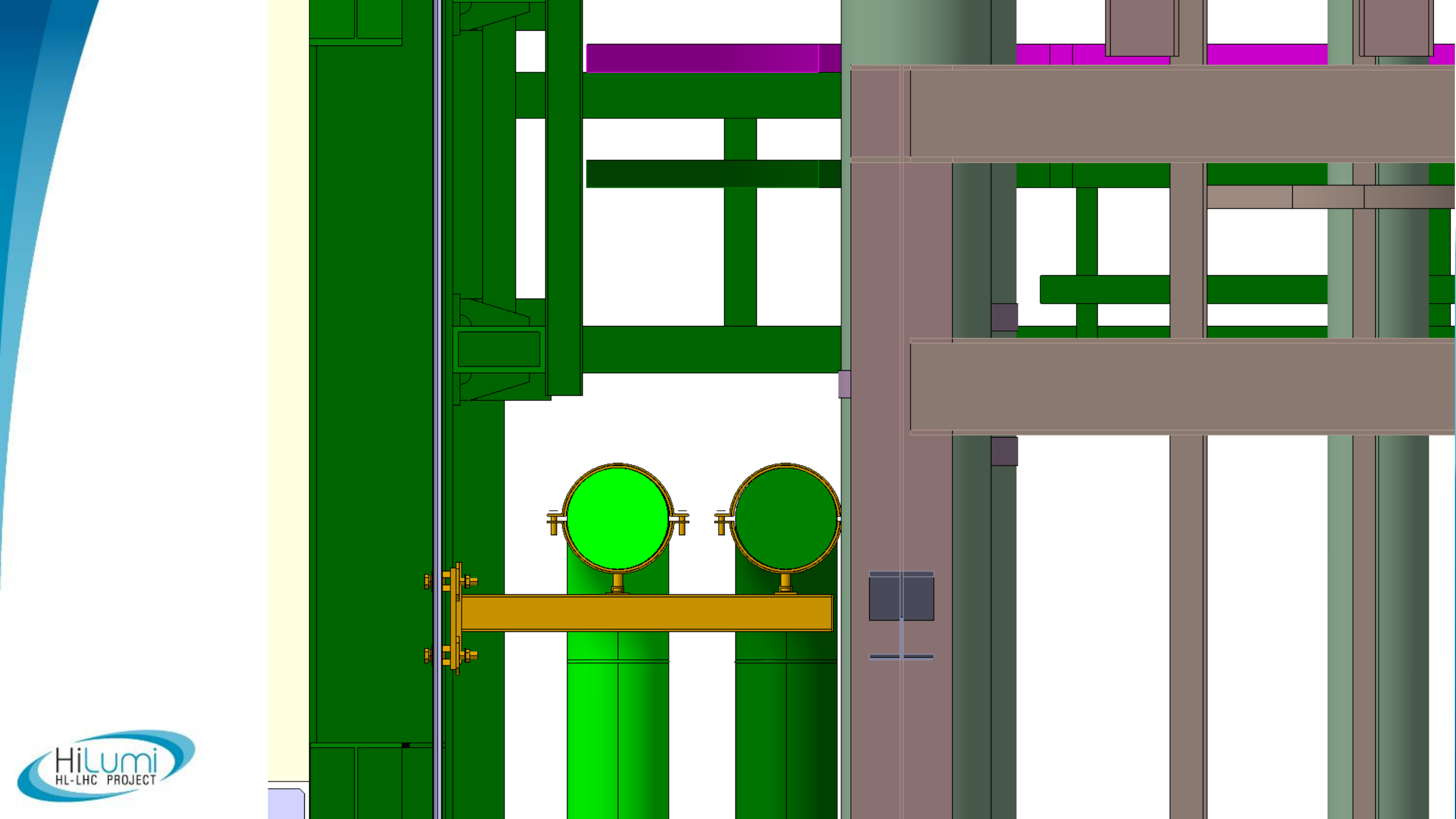


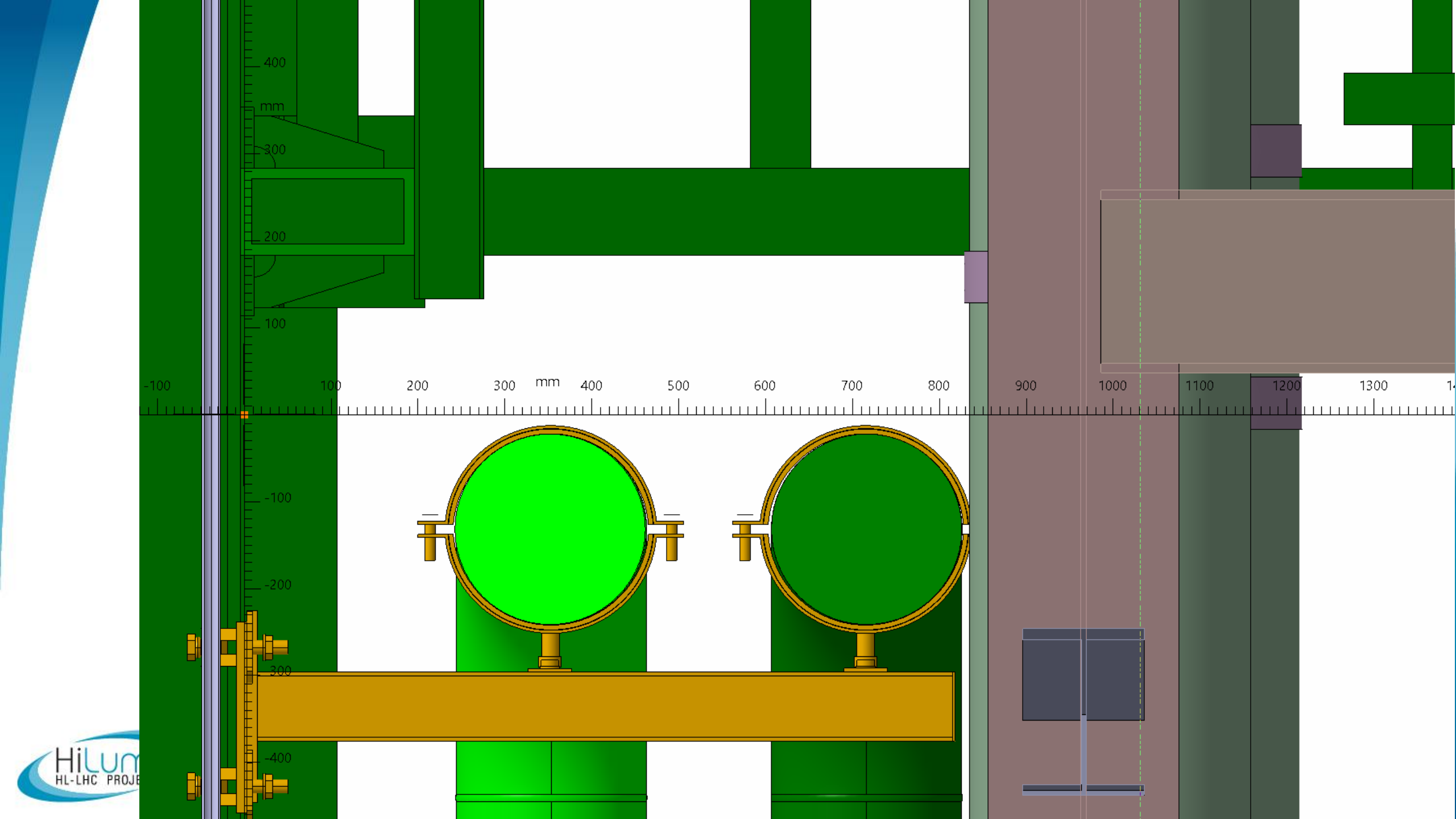




TUYAUTERIES TROP PROCHE







VERSION TRANSMIS

