

Tier1 Report 09/10/2024

Activity for Last Week:

- Fixed wire Testing in R89

Changes/News for upcoming week

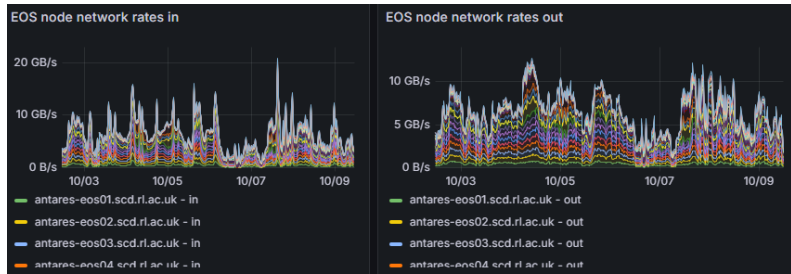
- Batch
- Echo
- Tape
- Grid Services
- Network

6 of 6 Tickets

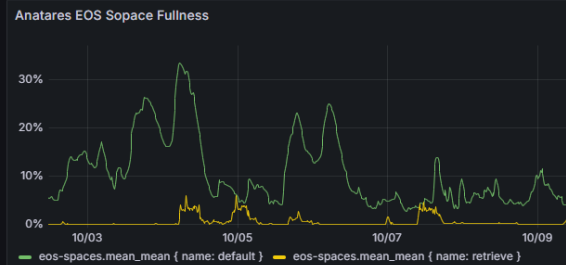
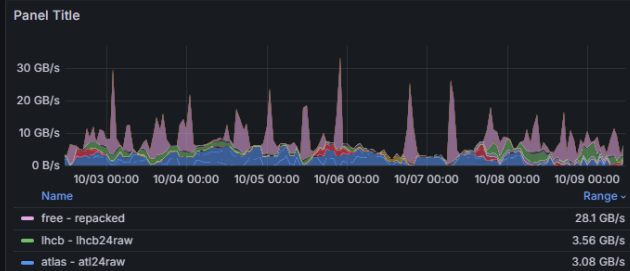
Ticket-ID	Type	VO	Site	Priority	Resp. Unit	Status	Last Update	Subject	Scope
168428		atlas	RAL-LCG2	urgent	NGI_UK	in progress	2024-10-08	Connectivity needed for Rucio at RAL	WLCG
168379		none	RAL-LCG2	less urgent	NGI_UK	on hold	2024-10-01	Request to implement BGP tagging of ...	WLCG
167369		cms	RAL-LCG2	urgent	NGI_UK ▸ involved	on hold	2024-08-15	CVMFS stratum-1 server at RAL	WLCG
165969		cms	RAL-LCG2	urgent	NGI_UK	on hold	2024-09-03	enabling IAM token access to ARC-CEs at ...	WLCG
165818		none	RAL-LCG2	urgent	NGI_UK	in progress	2024-09-02	ATTENTION - new TOKEN configuration for ...	EGI
165323		none	RAL-LCG2	less urgent	NGI_UK	on hold	2024-06-12	RAL-LCG2: Enabling tokens on ...	EGI

New Summary Dashboard in progress.

<https://vande.gridpp.rl.ac.uk/next/d/egvWB4Vz/tier1-vo-service-summary?orgId=1&refresh=1m>



Antares

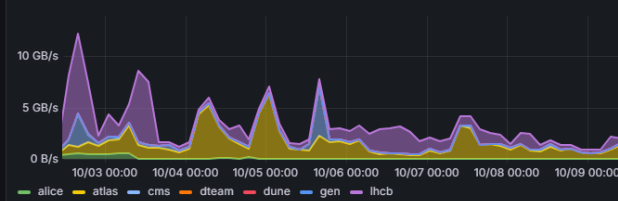


Echo

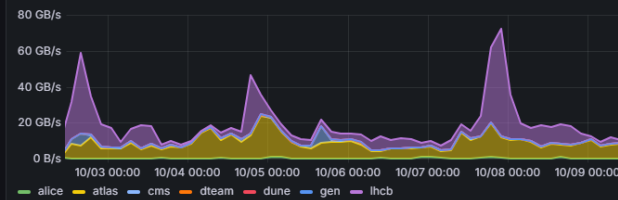
Joint xroot/WebDav Gateway Health

ceph-gw14.gridpp.rl.ac.uk	ok
ceph-gw15.gridpp.rl.ac.uk	ok
ceph-gw16.gridpp.rl.ac.uk	ok
ceph-svc01.gridpp.rl.ac.uk	ok
ceph-svc02.gridpp.rl.ac.uk	ok
ceph-svc03.gridpp.rl.ac.uk	ok
ceph-svc05.gridpp.rl.ac.uk	ok
ceph-svc07.gridpp.rl.ac.uk	ok
ceph-svc08.gridpp.rl.ac.uk	ok
ceph-svc09.gridpp.rl.ac.uk	ok
ceph-svc11.gridpp.rl.ac.uk	ok
ceph-svc13.gridpp.rl.ac.uk	unknown
ceph-svc14.gridpp.rl.ac.uk	ok
ceph-svc15.gridpp.rl.ac.uk	ok
ceph-svc17.gridpp.rl.ac.uk	ok

Echo Write by VO



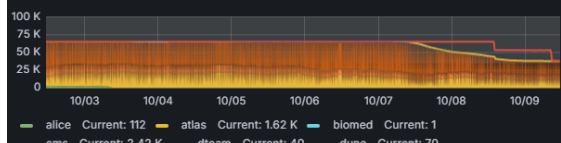
Echo Read by VO



Batch Services

Available L	Av	To	Available C	Used Core	Ru	Efficiency	Monthly Average Cores in use / allocation											
98.2%	100%	98.2%	36712	36056	7884	93.7%	group_ALICE	group_ATLAS	group_CMS	group_LHCB	group_LIGO	group_NONLHC	48%	66%	179%	145%	0%	23%

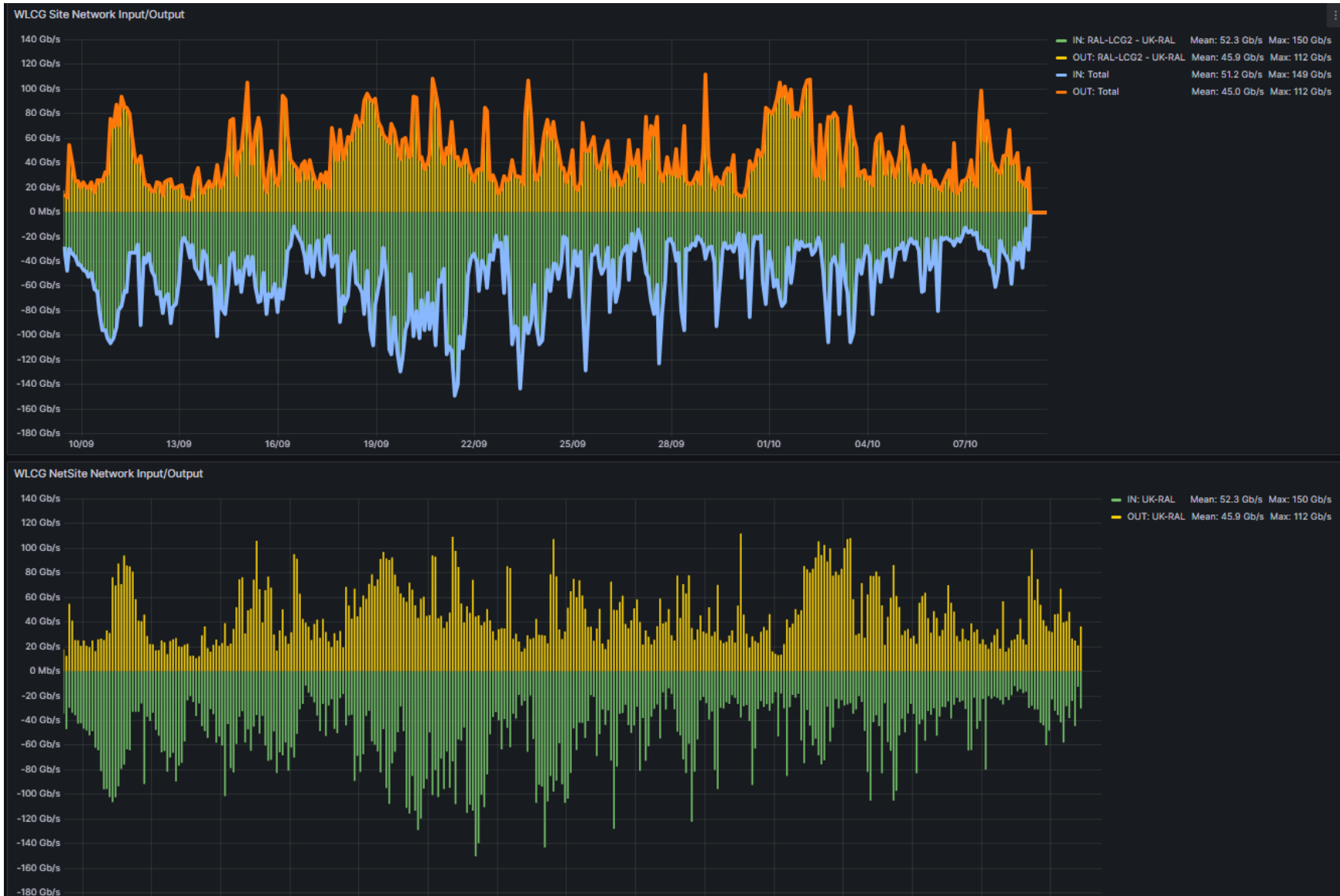
Cores in use



Job Time Ratios

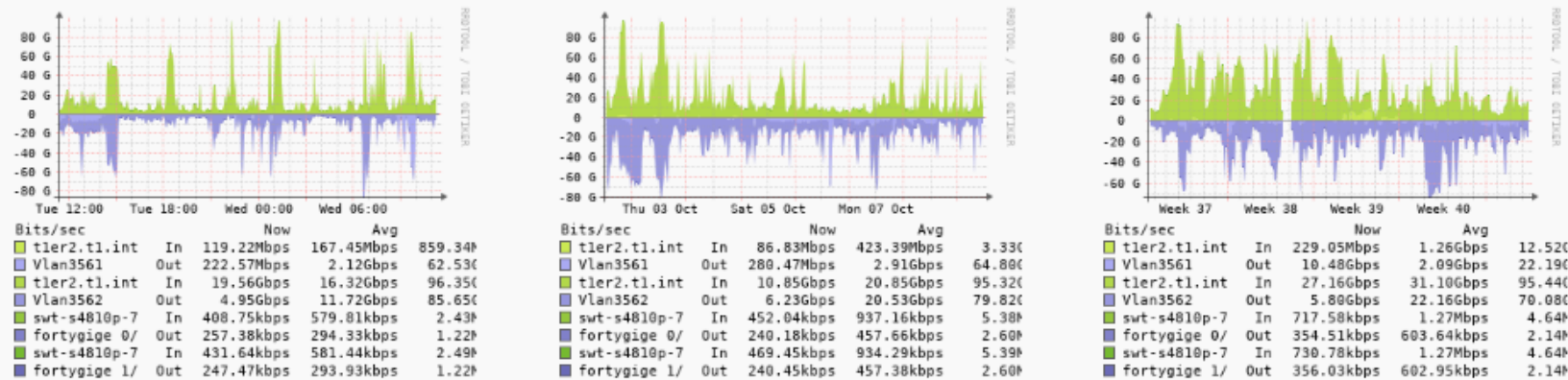


<https://monit-grafana-open.cern.ch/d/Mwuxgoglk/wlcg-site-network?orgId=16&var-site=RAL-LCG2&var-binning=1h&from=now-30d&to=now>



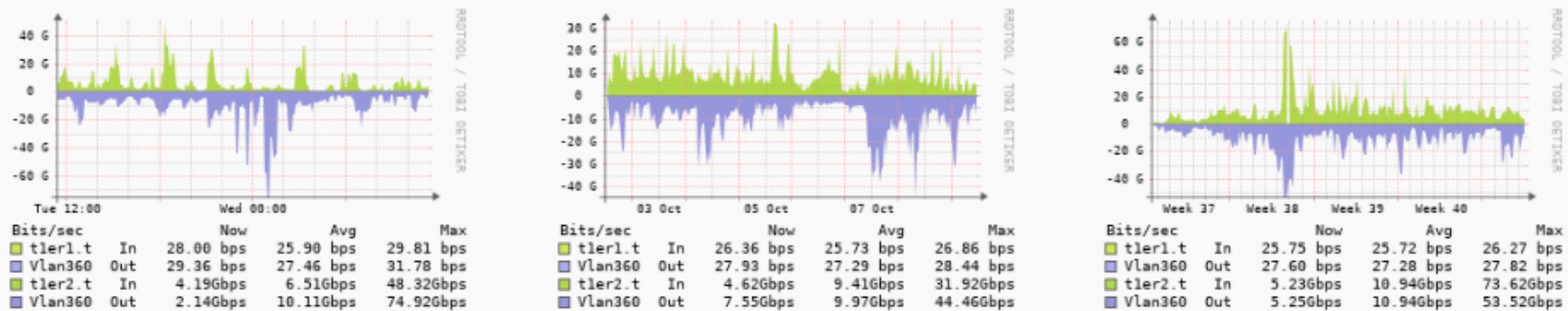
<https://librenms.gridpp.rl.ac.uk/ifttype/type=LHCOPN>

Total Graph for ports of type : LHCOPN



<https://librenms.gridpp.rl.ac.uk/ifttype/type=LHCONE>

Total Graph for ports of type : LHCONE



CMS: https://cmsst.web.cern.ch/sitereadiness/report.html#T1_UK_RAL

T1_UK_RAL

GGUS Tickets: 165969

Downtimes:

D

SAM Status: 87% 100% 100% 99% 82% 100% 100% 100% 100% 100% 100% 100% 100% 100% 100%

Hammer Cloud: 100% 100% 100% 100% 99% 100% 100% 99% 100% 96% 100% 100% 100% 100% 100% 100%

FTS Status: 100% 100% 100% 100% 0% 0% 0% 94% 100% 0% 0% 100% 0% 0% 0% 0%

Site Readiness: 60% 82% 100% 99% 77% 96% 97% 96% 99% 91% 93% 100% 97% 9% 89% 96%

Life Status:

Prod Status:

CRAB Status:

23	24	25	26	27	28	29	30	1	2	3	4	5	6	7	8	9
----	----	----	----	----	----	----	----	---	---	---	---	---	---	---	---	---

Sep

Oct

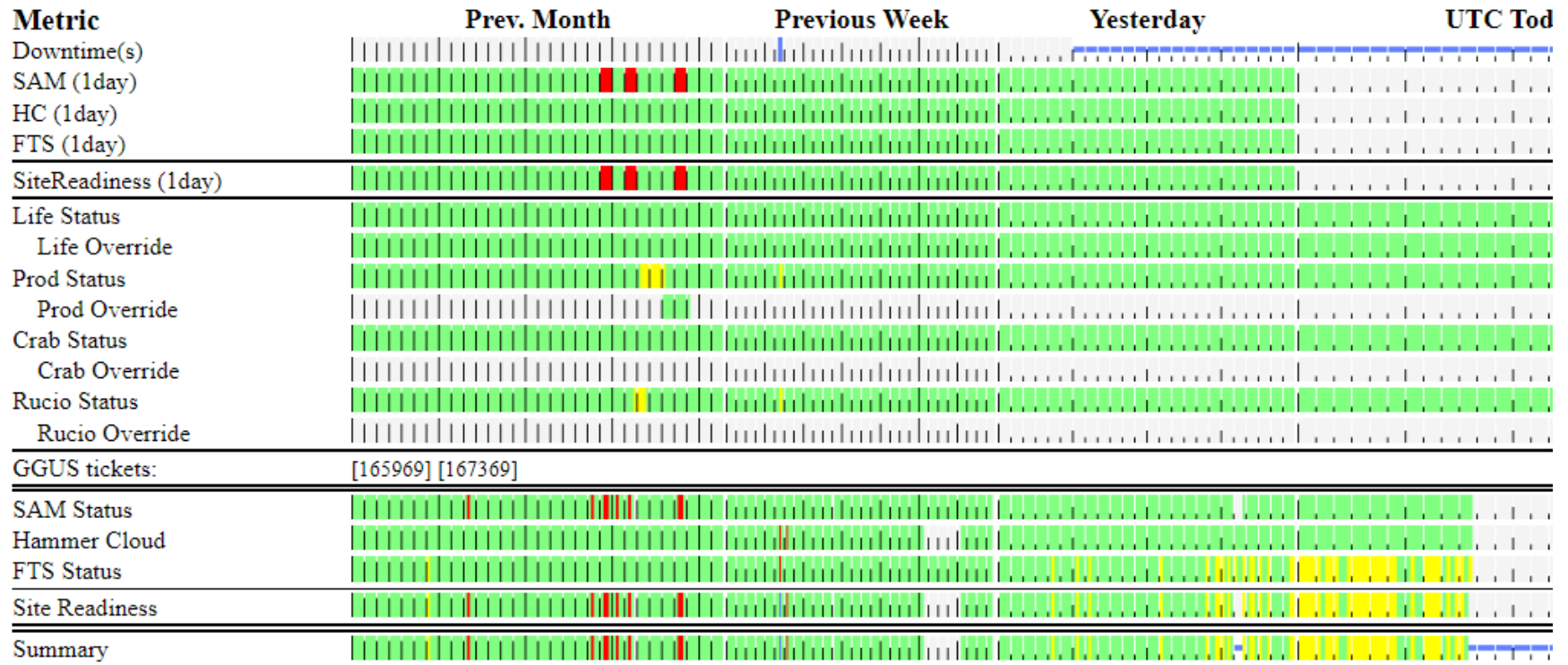
- = ok / enabled
- = warning / drain, test
- = error / disabled

- ? = unknown / not set
- WR = Waiting Room state
- M = Morgue state

- D = Scheduled Downtime
- P = Partial Downtime
- U = Ad Hoc Downtime

https://cmsst.web.cern.ch/siteStatus/detail.html?site=T1_UK_RAL

T1_UK_RAL Site Status Detail (We, 2024-Oct-09 10:09 GM)



ATLAS:

<https://hammercloud.cern.ch/hc/app/atlas/siteoverview/?site=RAL-LCG2&startTime=2024-07-17&endTime=2024-07-24&templateType=isGolden>

1184 (functional) -...

1283 (functional) -...

1272 (functional) -...

1273 (functional) -...

Template: 1184 (functional) - PFT mc15 Sim_tf 21.0.15 FC

Time	0	1	2	3	4	5	6	7	8	9	10	11	12	13	14	15	16	17	18	19	20	21	22	23	Eff[%]	
09/10/24	c	c	c	c	c	c	c	c	c	c	c	c	c	c	c	c	m	0	0	0	0	0	0	0	0	100
08/10/24	c	c	c	c	c	c	c	c	c	c	c	c	c	c	c	c	c	c	c	c	c	c	c	c	c	100
07/10/24	c	c	c	c	c	c	c	c	c	c	c	c	c	c	c	c	c	c	c	c	c	c	c	c	s	100
06/10/24	c	c	c	c	c	c	c	c	c	c	c	c	c	c	c	c	c	c	c	c	c	c	c	c	c	100
05/10/24	c	c	s	c	c	c	c	c	c	c	c	c	c	c	c	c	c	c	c	c	c	c	c	c	c	100
04/10/24	c	c	c	c	c	c	c	c	c	c	m	c	c	c	c	c	c	c	c	c	c	c	c	c	c	99
03/10/24	c	c	c	c	c	c	c	c	c	c	c	c	c	c	c	c	c	c	c	c	c	c	c	c	c	100
02/10/24	c	c	c	c	c	c	c	c	c	c	f	m	c	c	c	c	c	c	c	c	c	c	c	c	c	98

Error Report

[+] Expand

10 entries per page

Search:

Showing 1 to 5 of 5 entries

« < 1 > »

RAL-LCG2_MCORE

1184 (functional) -...

1283 (functional) -...

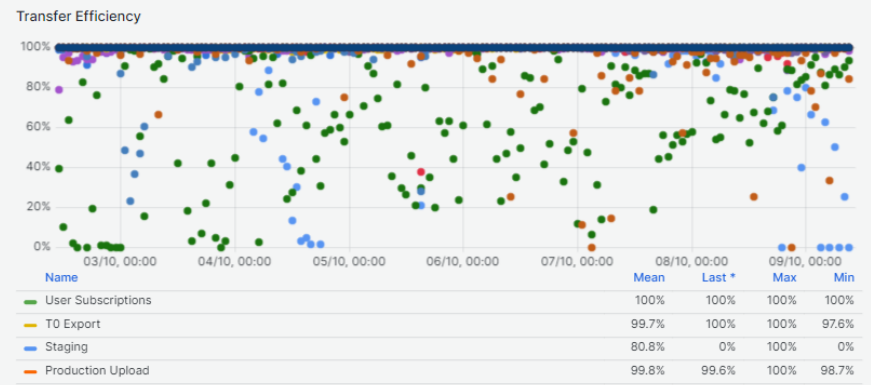
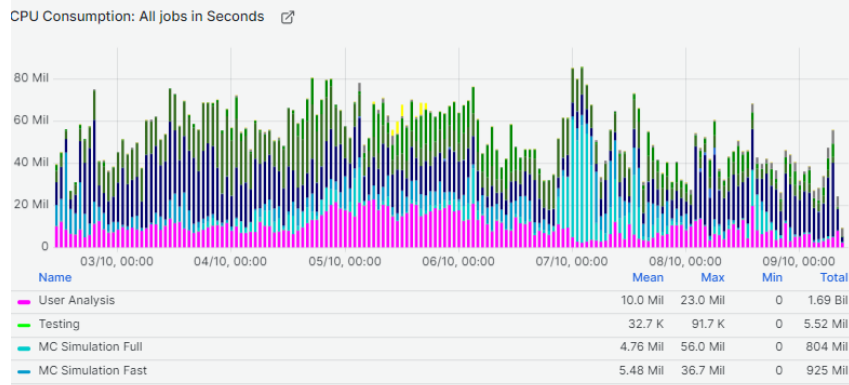
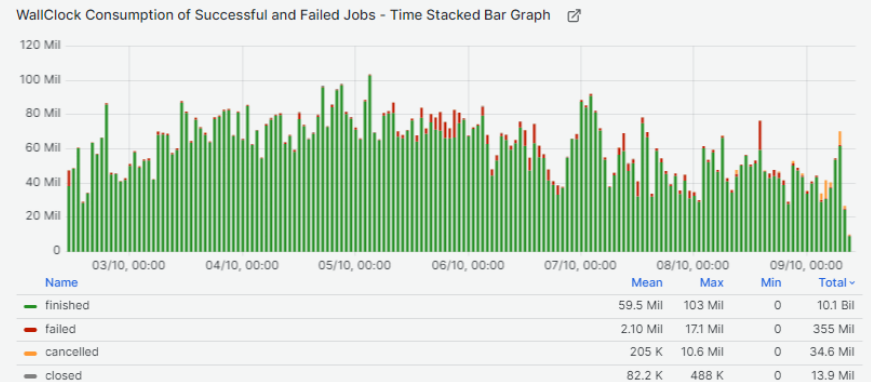
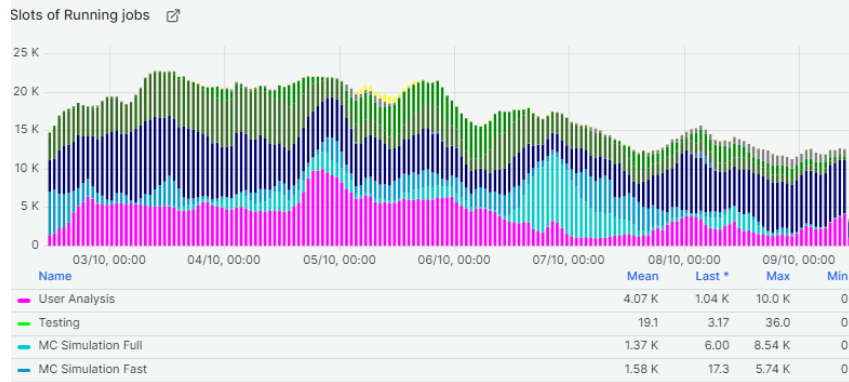
Template: 1184 (functional) - PFT mc15 Sim_tf 21.0.15 FC

Time	0	1	2	3	4	5	6	7	8	9	10	11	12	13	14	15	16	17	18	19	20	21	22	23	Eff[%]	
09/10/24	s	s	s	s	c	s	s	c	c	s	s	s	c	s	s	c	m	0	0	0	0	0	0	0	0	100
08/10/24	s	c	s	s	s	s	s	s	c	c	s	s	s	s	c	s	s	c	c	c	s	c	c	s	s	100
07/10/24	s	c	c	s	s	c	s	c	s	s	c	s	s	s	c	s	c	s	s	s	c	s	c	c	c	100
06/10/24	c	c	s	c	c	c	c	c	c	c	c	c	c	c	c	c	c	c	c	c	s	s	s	s	c	100
05/10/24	s	c	s	c	c	c	c	c	c	c	c	c	c	c	c	c	c	s	s	c	s	s	c	c	c	100
04/10/24	s	s	s	c	s	s	c	s	s	s	s	s	s	c	s	s	c	s	s	s	c	c	s	s	c	100
03/10/24	c	s	c	c	c	c	c	c	c	c	s	c	c	s	s	s	s	s	s	s	c	c	s	s	s	100
02/10/24	c	c	s	s	s	s	s	c	c	s	s	c	c	c	c	c	c	c	c	c	c	s	s	s	c	100

Error Report

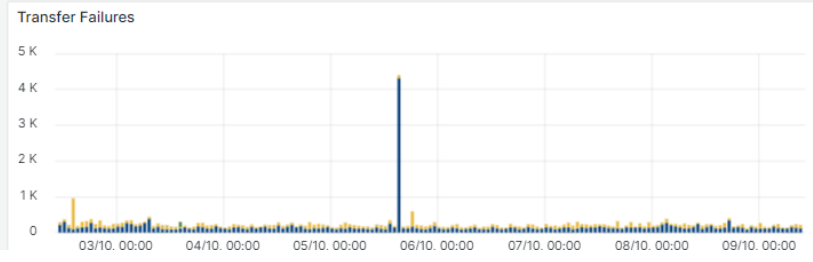
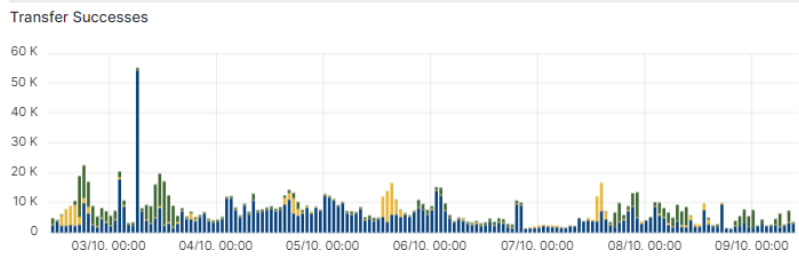
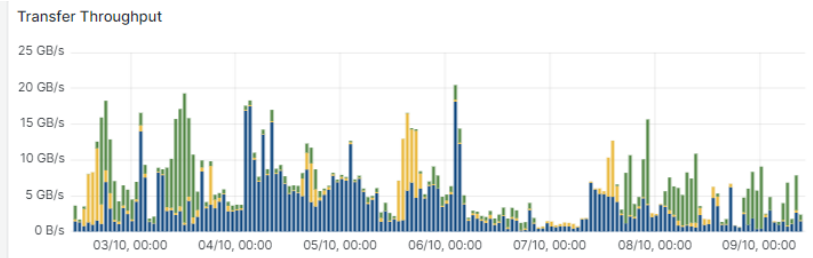
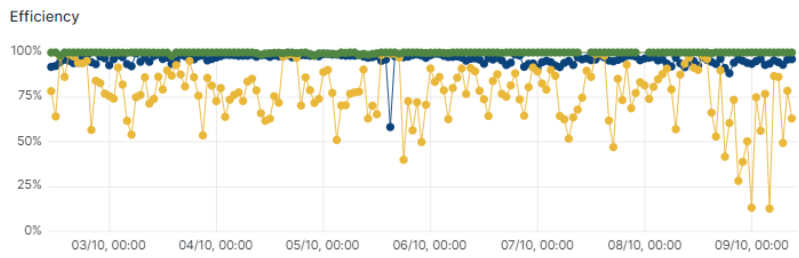
[+] Expand

Site Dashboard: https://monit-grafana.cern.ch/d/D26vEIGGz/site-oriented-dashboard?orgId=17&var-bin=1h&var-groupby_jobs=adactivity&var-groupby_ddm=activity&var-cloud=All&var-country=All&var-federation=All&var-site=RAL-LCG2&var-computingsite=All&var-jobtype=All&var-es_division_factor=1&var-measurement=ddm_transfer_1h

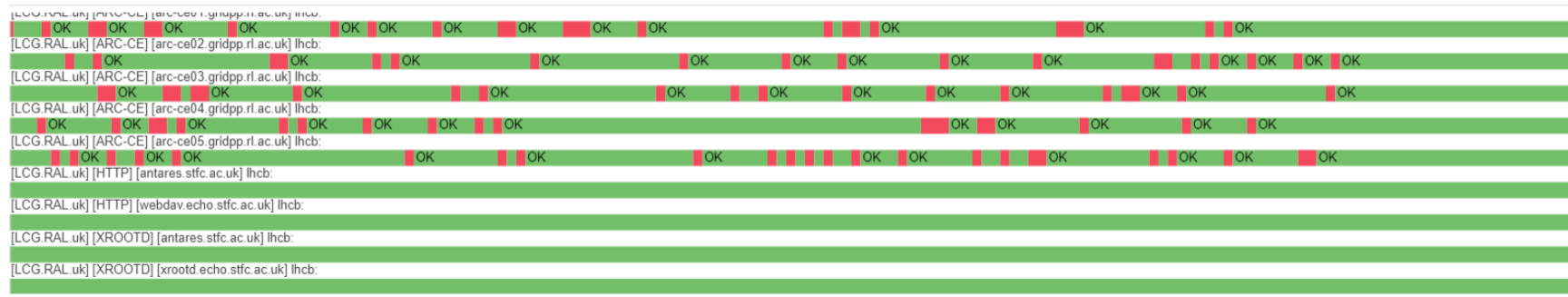


Transfer Rates

<https://tinyurl.com/RAL-Ingest-FTS>



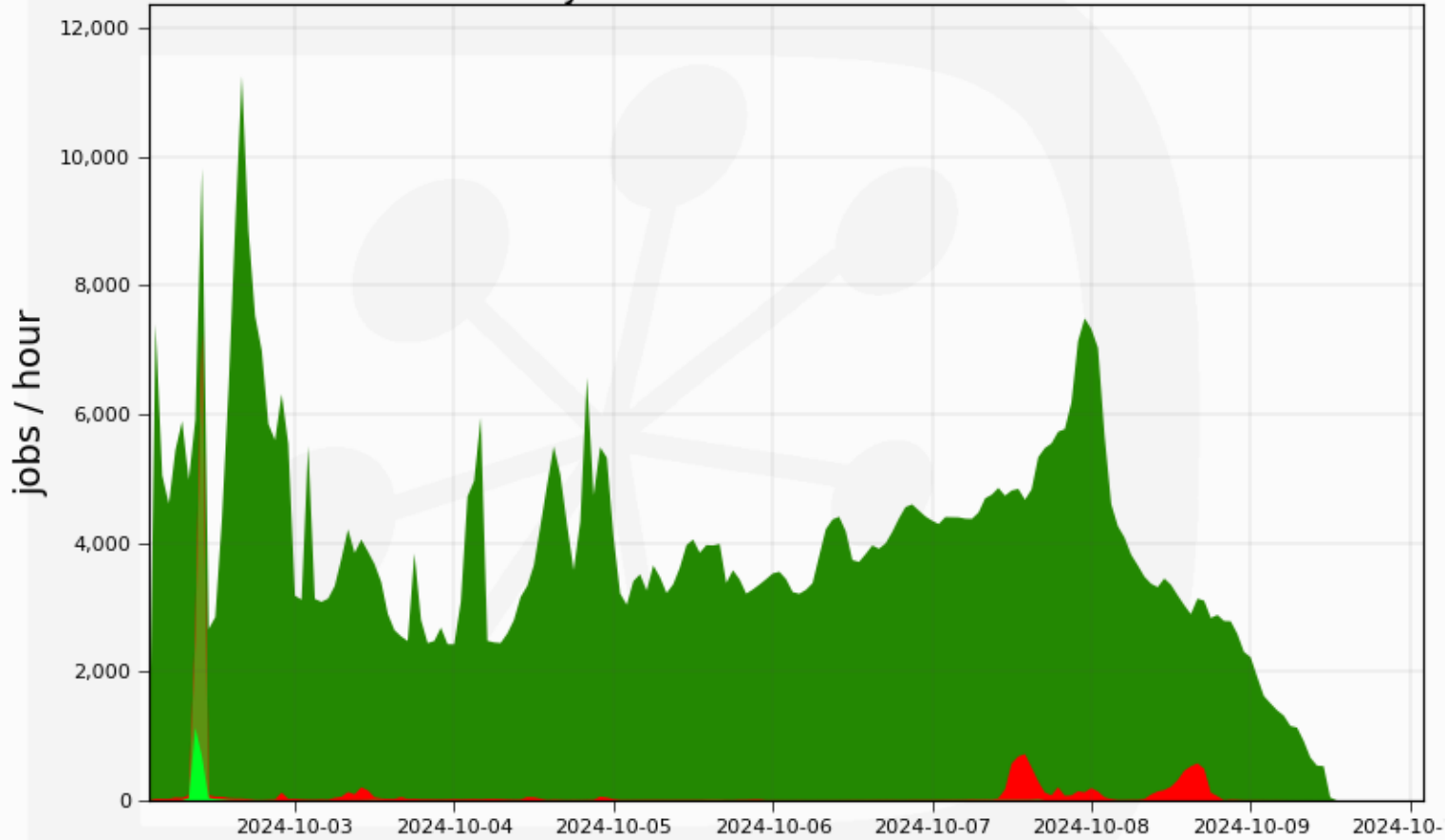
LHCB: https://monit-grafana.cern.ch/d/000000619/wlwg-sitemon-historical-profiles?orgId=20&from=now-30d&to=now&var-vo=lhcb&var-profile=LHCB_CRITICAL&var-dst_tier=1&var-dst_country=UK&var-dst_federation=All&var-dst_experiment_site=LCG.RAL.uk&var-service_flavour=ARC-CE&var-dst_hostname=All&var-recomputation=status



Jobs:

Jobs by FinalMajorStatus

8 Days from 2024-10-02 to 2024-10-10

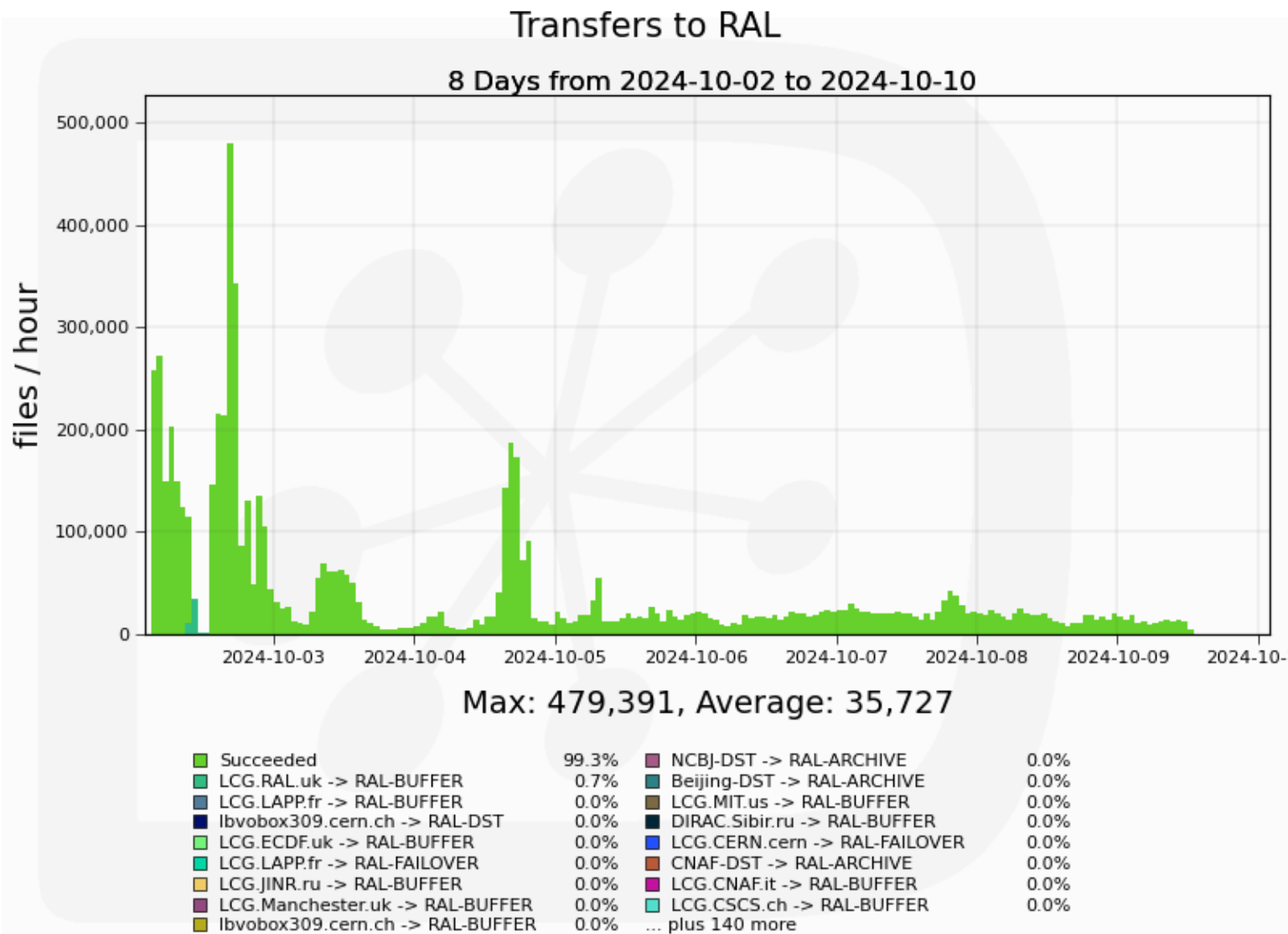


Max: 11,240, Average: 3,718

Done 97.2% Failed 1.4% Rescheduled 1.1% Completed 0.3%

Generated on 2024-10-09 10:27:19 UTC

Transfers to RAL:

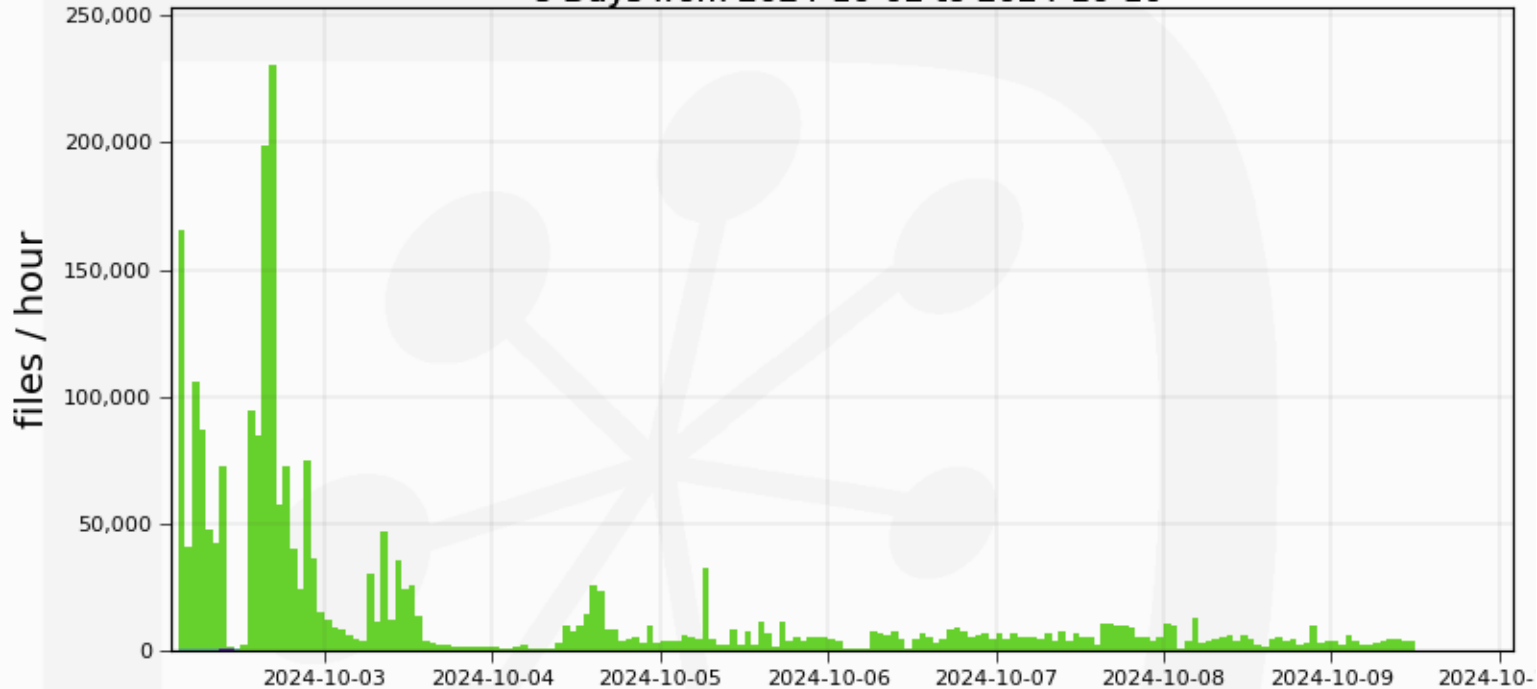


Generated on 2024-10-09 10:27:23 UTC

Transfers from RAL:

Transfers from RAL

8 Days from 2024-10-02 to 2024-10-10



Max: 230,238, Average: 12,975

■ Succeeded	99.3%	■ RAL-RAW -> LCG.RAL.uk	0.0%
■ RAL-DST -> NCBJ-ARCHIVE	0.6%	■ RAL-USER -> LCG.ECDF.uk	0.0%
■ RAL-DST -> CNAF-DST	0.1%	■ RAL-USER -> LCG.IHEP.ru	0.0%
■ RAL-DST -> NCBJ-DST	0.0%	■ RAL_MC-DST -> CNAF_MC-DST	0.0%
■ RAL-USER -> DIRAC.Client.ch	0.0%	■ RAL-FAILOVER -> CNAF-DST	0.0%
■ RAL-DST -> Glasgow-DST	0.0%	■ RAL-USER -> LCG.CNAF.it	0.0%
■ RAL-FAILOVER -> CNAF-BUFFER	0.0%	■ RAL-FAILOVER -> MIT-BUFFER	0.0%
■ RAL_MC-DST -> NCBJ-ARCHIVE	0.0%	■ RAL-BUFFER -> LCG.RAL.uk	0.0%
■ RAL-ARCHIVE -> DIRAC.Client.de	0.0%	... plus 95 more	

Generated on 2024-10-09 10:27:29 UTC

<https://tinyurl.com/aliceRALstorage>

Disk storage elements																							
RAL																							
AllEn SE		Catalogue statistics (1024-base units)						Storage-provided information (1024-base units)						Functional tests				Last day add tests		Demotion		IPv6	
SE Name	AllEn name	Tier	Size	Used	Free	Usage	No. of files	Type	Size	Used	Free	Usage	Version	EOS Version	add	get	rm	3rd	Last OK add	Successful	Failed	factor	add
.RAL - CEPH	ALICE::RAL::CEPH	1	2 PB	1.308 PB	708.3 TB	65.42%	13,795,487	CEPH	2 PB	0	2 PB	-	Xrootd v5.7.0						09.10.2024 11:46	24	0		0
Total			2 PB	1.308 PB	708.3 TB		13,795,487		2 PB	0	2 PB				1	1	1	1					1

What is this about?

Custodial storage elements																								
RAL																								
AllEn SE		Catalogue statistics (1024-base units)						Storage-provided information (1024-base units)						Functional tests				Last day add tests		Demotion		IPv6		
SE Name	AllEn name	Tier	Size	Used	Free	Usage	No. of files	Type	Size	Used	Free	Usage	Version	EOS Version	add	get	rm	3rd	Last OK add	Successful	Failed	factor	add	
.RAL - CTA	ALICE::RAL::CTA	1	2.726 PB	1.49 PB	1.236 PB	54.67%	659,452	TAPE	288 TB	14.5 TB	273.5 TB	5.013%	Xrootd 5.6.10-1.el9.x86_64						09.10.2024 11:32	24	0		0	Test...
.RAL - CTA_TEST	ALICE::RAL::CTA_TEST	1	1000 GB	0	1000 GB	-	0	TAPE	1000 GB	765.7 MB	999.3 GB	0.075%	Xrootd 5.6.10-1.el9.x86_64						09.10.2024 11:35	24	0		0	Test...
Total			2.727 PB	1.49 PB	1.237 PB		659,452		289 TB	14.5 TB	274.5 TB				2	2	2	2					0	