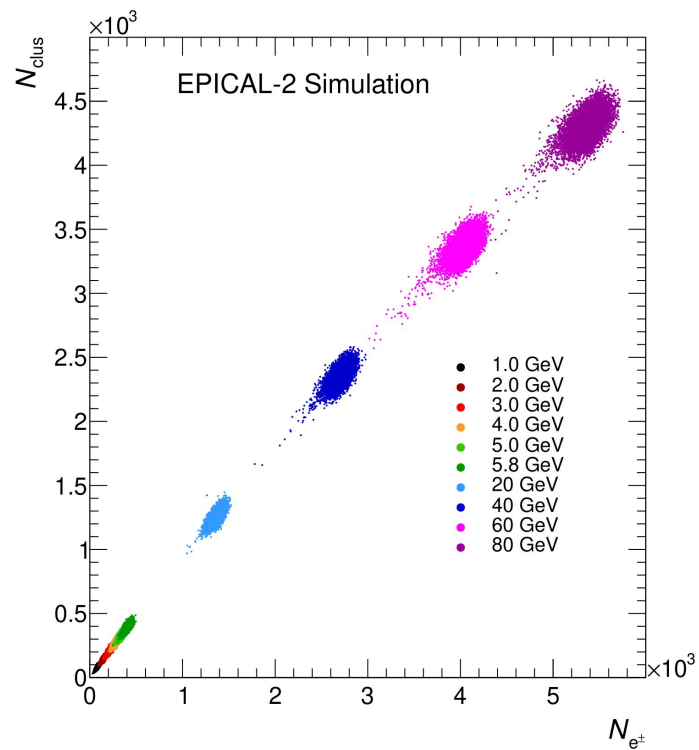
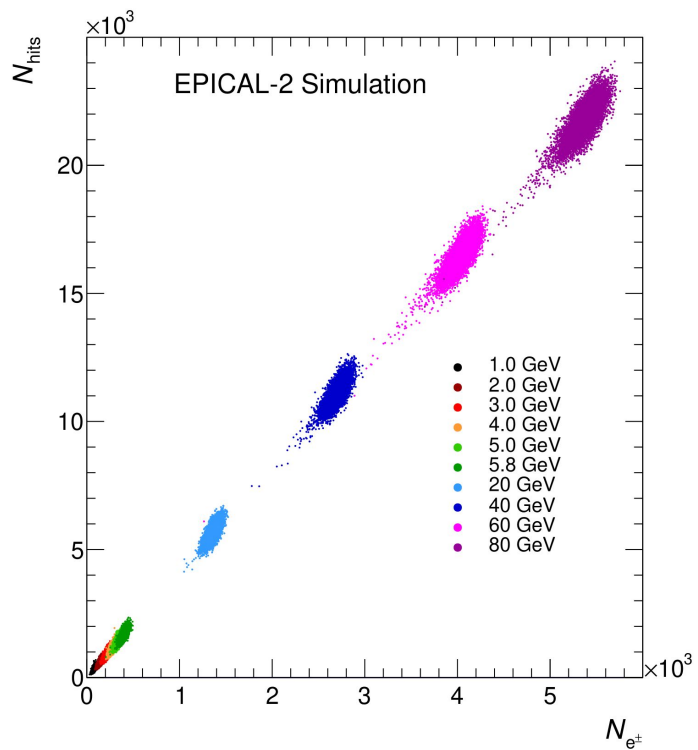


EPICAL-2 Meeting - 10.10.24

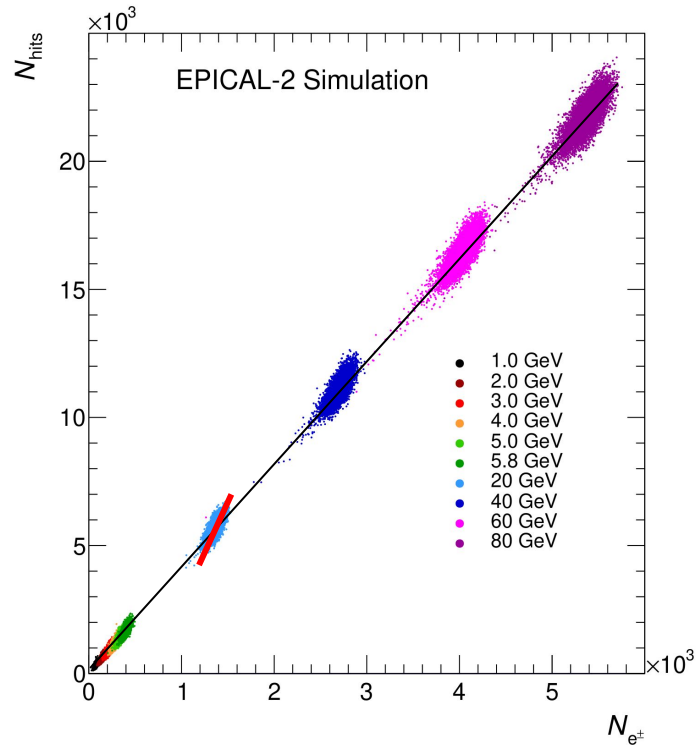
Correlation of $N_{e\pm}$ and N_{hits}

Jan Schöngarth

N_{e^\pm} vs. $N_{\text{hits/clus}}$

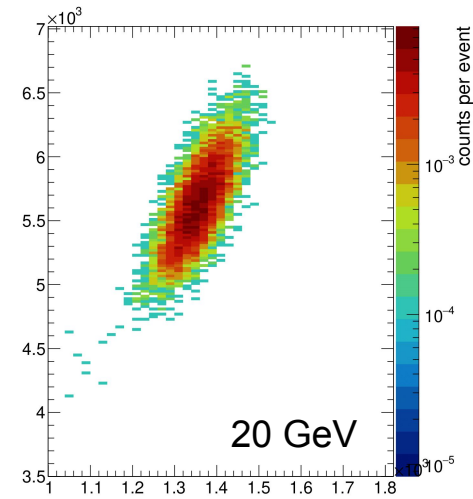


N_{e^\pm} vs. $N_{\text{hits/clus}}$

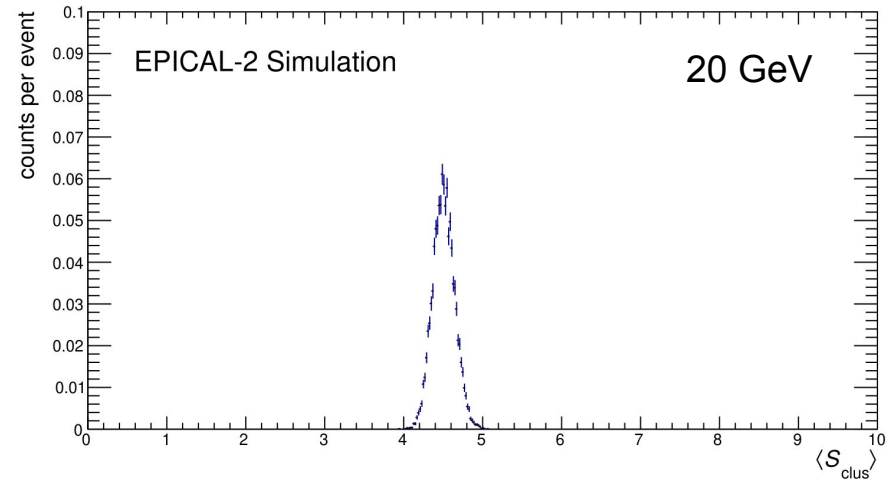
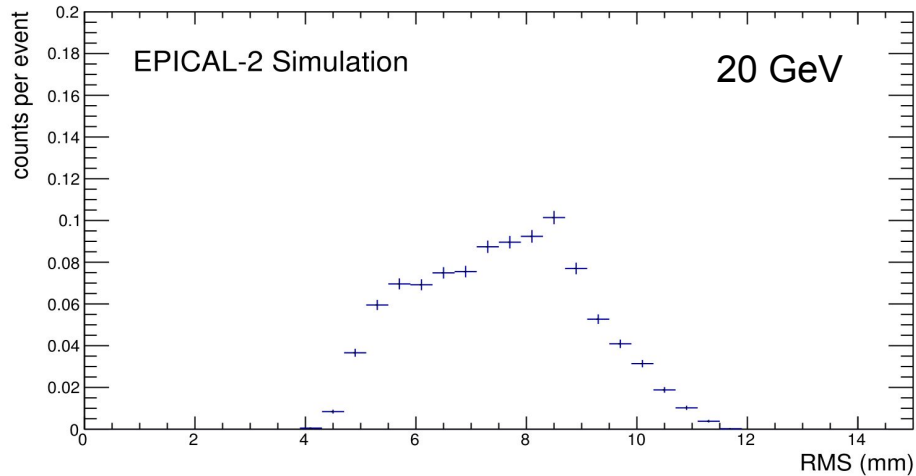


- possible explanation:

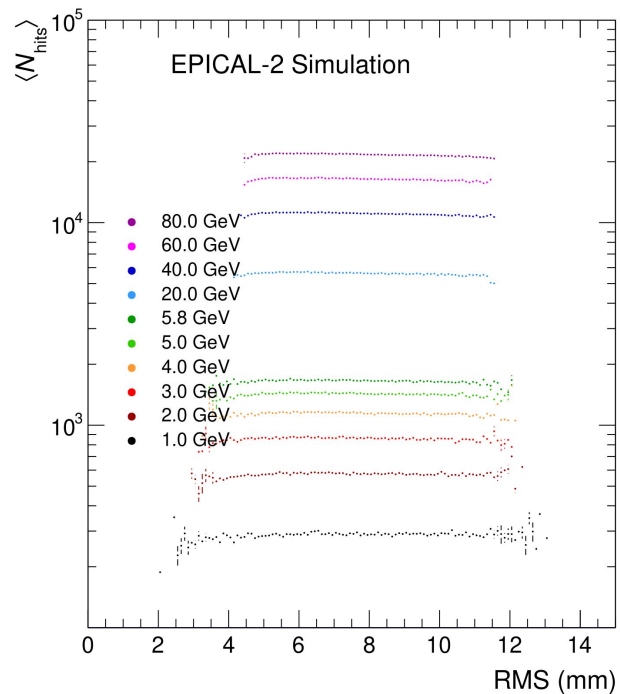
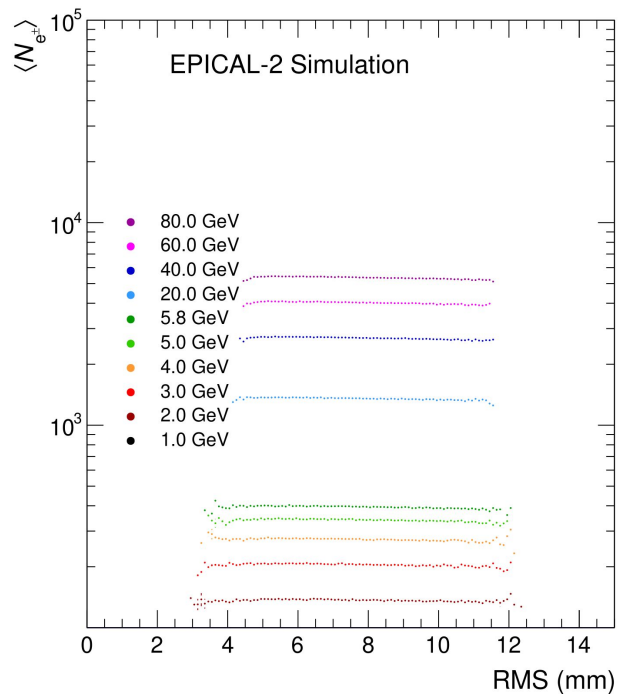
RMS, Clustersize dependence



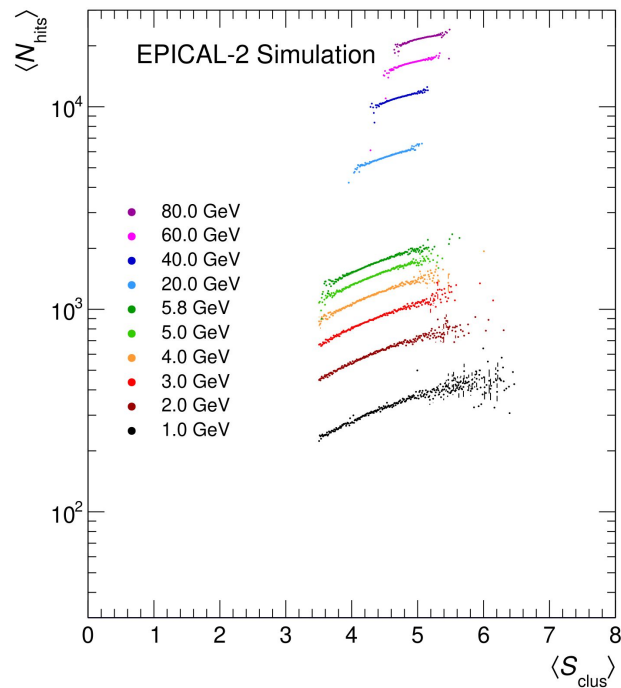
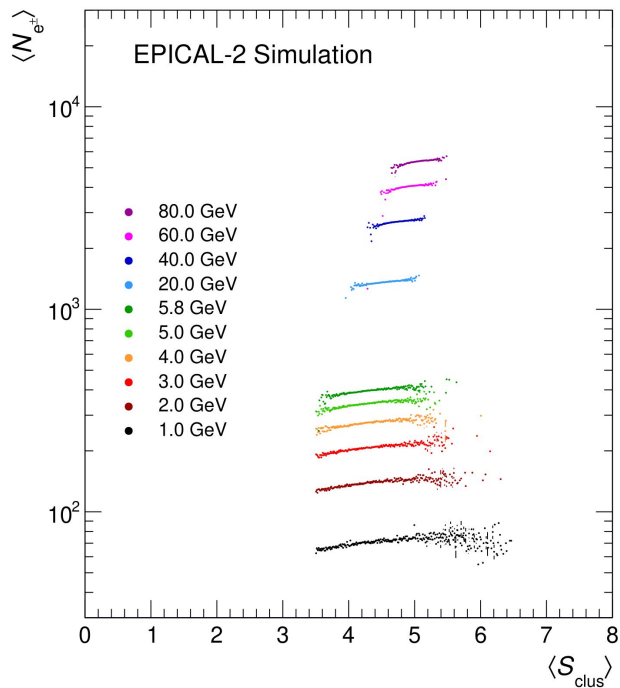
RMS and Mean Clustersize



RMS dependence



Mean Clustersize Dependence



N_{e^\pm} vs. $N_{\text{hits/clus}}$

