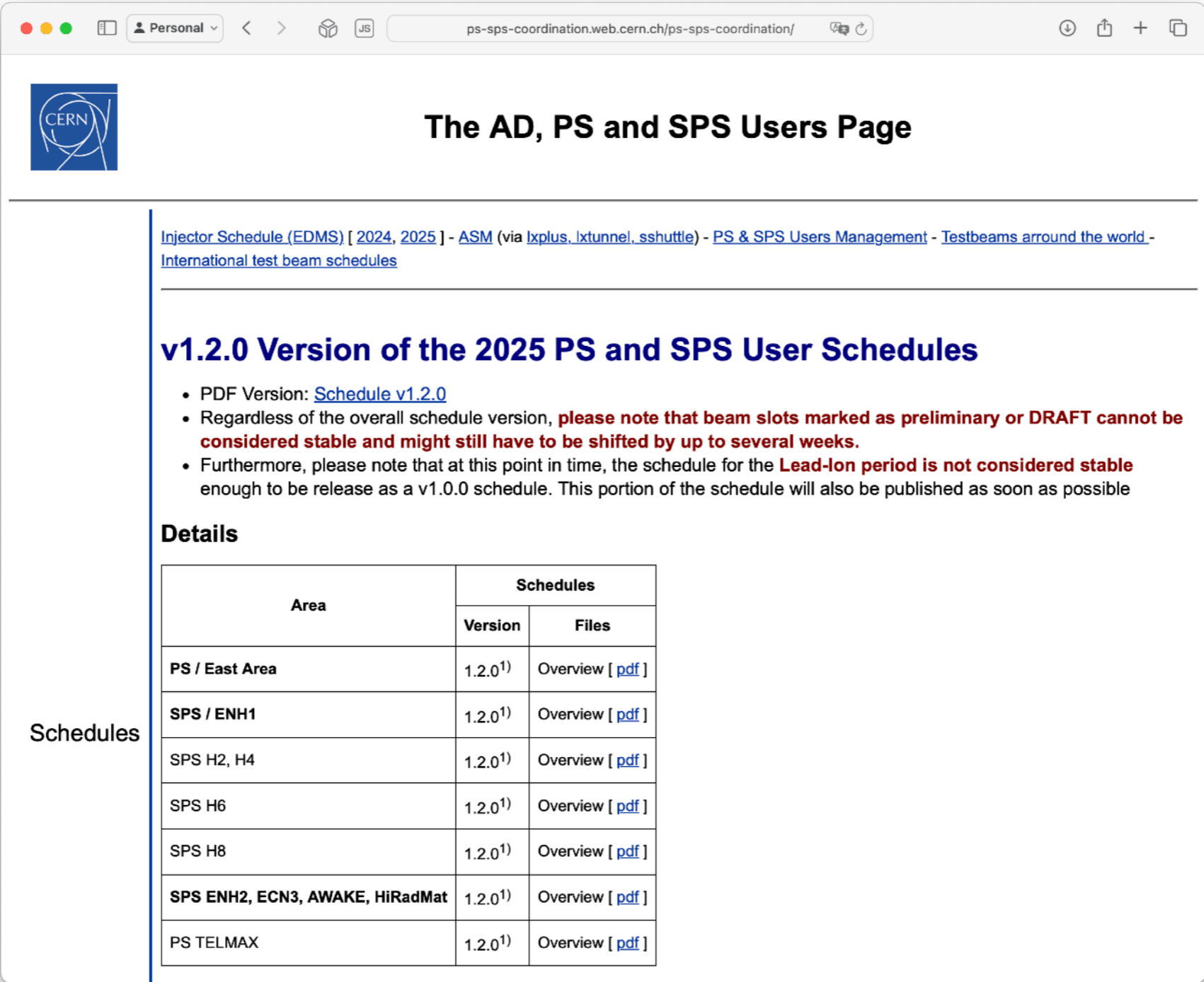


Some last words....



The screenshot shows a web browser window with the URL ps-sps-coordination.web.cern.ch/ps-sps-coordination/. The page features the CERN logo and the title "The AD, PS and SPS Users Page". Below the title, there is a navigation menu with links: [Injector Schedule \(EDMS\) \[2024, 2025 \] - ASM \(via lxplus, lxtunnel, sshuttle\) - PS & SPS Users Management - Testbeams around the world - International test beam schedules](#). The main content area is titled "v1.2.0 Version of the 2025 PS and SPS User Schedules" and contains a bulleted list of information. A "Details" section follows, containing a table with columns for "Area", "Version", and "Files". The table lists various areas and their corresponding schedule versions and PDF links. A vertical label "Schedules" is positioned to the left of the table.

[Injector Schedule \(EDMS\) \[2024, 2025 \] - ASM \(via lxplus, lxtunnel, sshuttle\) - PS & SPS Users Management - Testbeams around the world - International test beam schedules](#)

v1.2.0 Version of the 2025 PS and SPS User Schedules

- PDF Version: [Schedule v1.2.0](#)
- Regardless of the overall schedule version, **please note that beam slots marked as preliminary or DRAFT cannot be considered stable and might still have to be shifted by up to several weeks.**
- Furthermore, please note that at this point in time, the schedule for the **Lead-Ion period is not considered stable** enough to be release as a v1.0.0 schedule. This portion of the schedule will also be published as soon as possible

Details

Area	Schedules	
	Version	Files
PS / East Area	1.2.0 ¹⁾	Overview [pdf]
SPS / ENH1	1.2.0 ¹⁾	Overview [pdf]
SPS H2, H4	1.2.0 ¹⁾	Overview [pdf]
SPS H6	1.2.0 ¹⁾	Overview [pdf]
SPS H8	1.2.0 ¹⁾	Overview [pdf]
SPS ENH2, ECN3, AWAKE, HiRadMat	1.2.0 ¹⁾	Overview [pdf]
PS TELMAX	1.2.0 ¹⁾	Overview [pdf]

Schedules

If you need more information about CERN testbeam, please visit ...

<https://ps-sps-coordination.web.cern.ch/>

Don't miss these links..

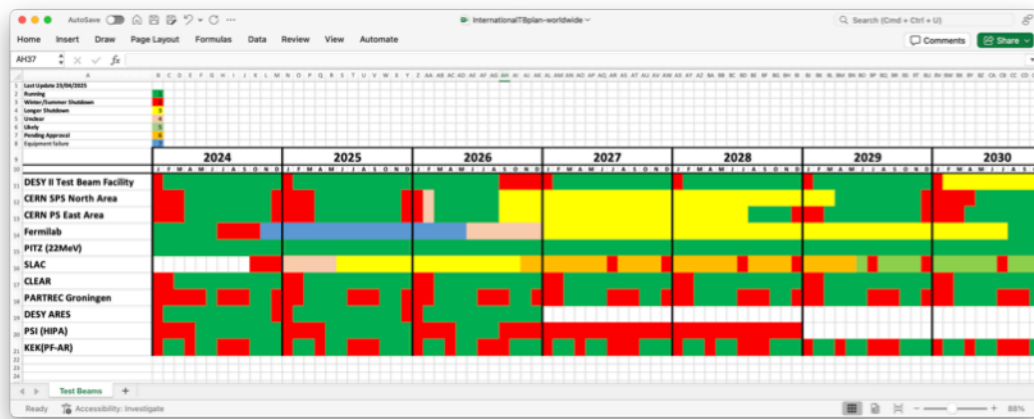


The AD, PS and SPS Users Page

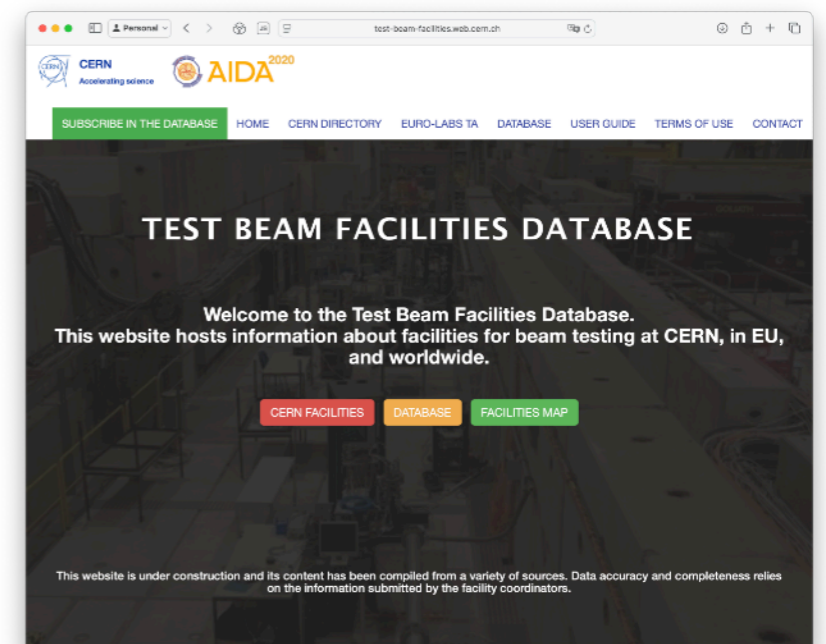
[Injector Schedule \(EDMS\) \[2024, 2025 \] - ASM \(via lxplus, lxtunnel, sshuttle\) - PS & SPS Users Management - Testbeams around the world - International test beam schedules](#)



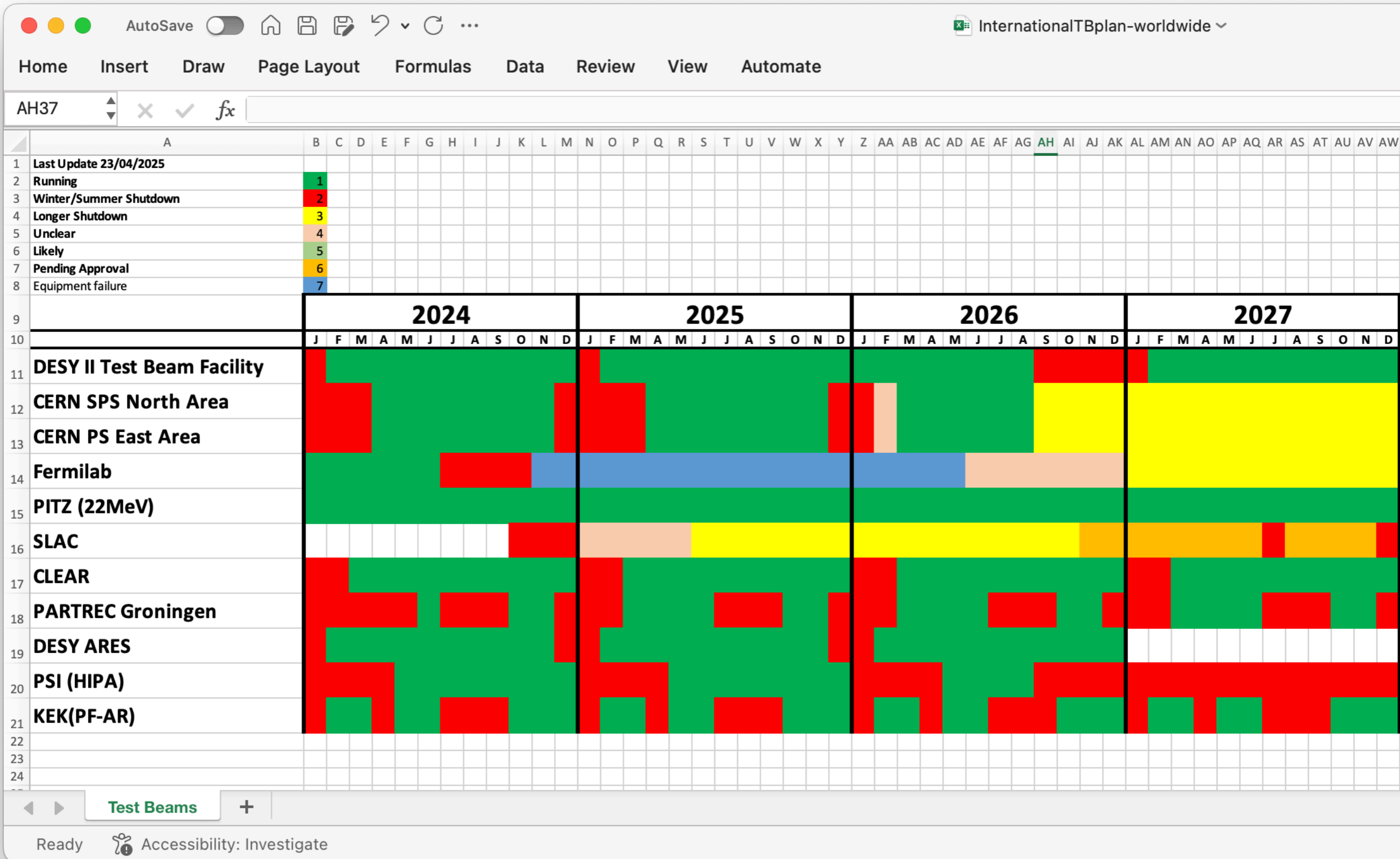
International
Test Beam Schedule
for the next years



Database of
Irradiation Facilities
worldwide



International Test Beam Schedule



Test Beam Database

test-beam-facilities.web.cern.ch

CERN Accelerating science AIDA²⁰²⁰

SUBSCRIBE IN THE DATABASE HOME CERN DIRECTORY EURO-LABS TA DATABASE USER GUIDE TERMS OF USE CONTACT

TEST BEAM FACILITIES DATABASE

Welcome to the Test Beam Facilities Database.
This website hosts information about facilities for beam testing at CERN, in EU,
and worldwide.

CERN FACILITIES DATABASE FACILITIES MAP

This website is under construction and its content has been compiled from a variety of sources. Data accuracy and completeness relies on the information submitted by the facility coordinators.

Test Beam Database

test-beam-facilities.web.cern.ch/beamlineDetails.php?ID=38&BL=1

Convert to PDF

Beamline Characteristics

Name:	H4
Particle type:	Electrons, hadrons, muons, ions
Particle polarity:	both
Particle type details:	
Particle intensity:	up to 1.E7 per spill
Particle Momentum/Energy:	10 to 400GeV
Particle Momentum/Energy Resolution:	2%
Experiments per beamline:	4
Experiments per beamline details:	Home of GIF, NA64 and NP04
Beam Generation (Direct Extraction, Secondary Generation, parasitic, ...):	Secondary Generation, Tertiary Generation
Beam size:	
Bunch clock:	

Personal



CERN
Accelerating science



AID

SUBSCRIBE IN THE DATABASE

TEST B

Welcome
This website hosts in

This website is under construction a

Final Words....

Closing Remarks



Web, Publication, Acknowledgements, and Contact

- More information can be found on our web page testbeam.desy.de and in the reference publication:
 - *"The DESY II test beam facility"*
<https://doi.org/10.1016/j.nima.2018.11.133> , NIMA, Volume 922, 1.4.2019, Pages 265-286
- Please include this acknowledgment in publications, presentations etc. based on data from DESY test beam:
 - *"The measurements leading to these results have been performed at the Test Beam Facility at DESY Hamburg (Germany), a member of the Helmholtz Association (HGF)."*
- Please add AIDA and EURO-LABS acknowledgments where applicable:
 - *AIDA 2020: "This project has received funding from the European Union's Horizon 2020 Research and Innovation programme under Grant Agreement no. 654168."*
 - *AIDA Innova: "This project has received funding from the European Union's Horizon 2020 Research and Innovation programme under grant agreement No 101004761."*
 - *EURO-LABS: "The research leading to these results has received funding from the European Union's Horizon Europe research and innovation programme under grant agreement no. 101057511."*
- Contact: testbeam@desy.de

