



SA2 - Quality Control – Task 2.7

Giuseppe Fiameni (CINECA)

SA2 Quality Control

Padova, October 18th 2011

Agenda

- Security Assessment activity
- Verification of software components (EMI 1 Updates)
- Conclusions
- Next steps

Security assessment activity

Components to access

gLite

- VOMS Admin 2.0.18
- Argus 1.2
- gLexec 0.8
- VOMS Core 2.0.2
- CREAM: Computing Resource Execution And Management
- WMS: Workload Management System

UNICORE

- TSI (Target System Interface)
- Gateway

- Activity carried on by Universitat Autònoma de Barcelona
- Last release of the security assessment plan available on the EMI wiki under SA2 Task 2.7 page [1]

[1] https://twiki.cern.ch/twiki/bin/view/EMI/TSA27#Security_Assessment_Activity

Security assessment activity

Progress status

gLite

- VOMS Admin 2.0.18 - **DONE**
- Argus 1.2 - **DONE**
- gLexec 0.8 - **DONE**
- VOMS Core 2.0.2 - *On-Going*
 - ✓ Started: May 2011
 - ✓ Expected duration: 6 months
- CREAM: Computing Resource Execution And Management
- WMS: Workload Management System

UNICORE

- TSI (Target System Interface)
- Gateway

How do we verify products?

- Release manager communicates us the release scheduled during EMT meetings
- A new task for each group of components that need to be verified is created within SA2 tracker (Savannah)
- The former task is assigned to one member of Quality Control team
- As soon as products get certified, a notification email reaches the QC team
- The member in charge of doing the verification for those products opens all corresponding Savannah tasks and the game begins ;)

How do we verify products? (2)

- Any product's material (certification report, test report, test plan) is checked against Production Release Criteria (<http://goo.gl/hINFe>)
- If any, non conformities are reported in task's comments and PTs asked to provide clarifications
 - **Major non conformities (i.e. lack of a binary package) block the verification process; products are moved back from “certified” to “open”**
 - Minor non conformities do not block the verification process but PTs are requested to provide clarifications

How do we verify products? (3)

- Any product's material (certification report, test report, test plan) is checked against Production Release Criteria (<http://goo.gl/hINFe>)
- If any, non conformities are reported in task's comments and PTs asked to provide clarifications
 - **Major non conformities (i.e. lack of a binary package) block the verification process; products are moved back from “certified” to “open”**
 - Minor non conformities do not block the verification process but PTs are requested to provide clarifications

How do we verify products? (4)

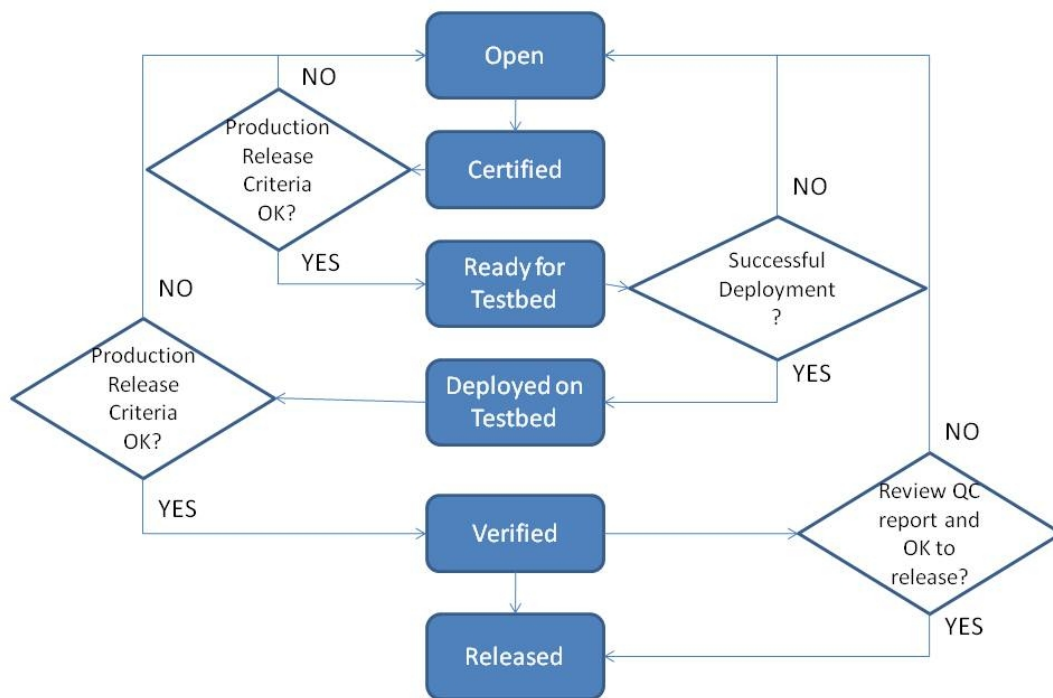
- Products passing the first step are moved to “Ready for Testbed”
- While products are checked on EMI testbed, PTs have the opportunity to fix any minor non conformity
- Products passing the test-bed checks are moved to “Deployed on Testbed”
- If all minor nonconformities have been fixed, the product is eventually **verified** ;)
- Not addressed nonconformities are discussed again with PTs so to find out a possible response for them

EMI 1 Release

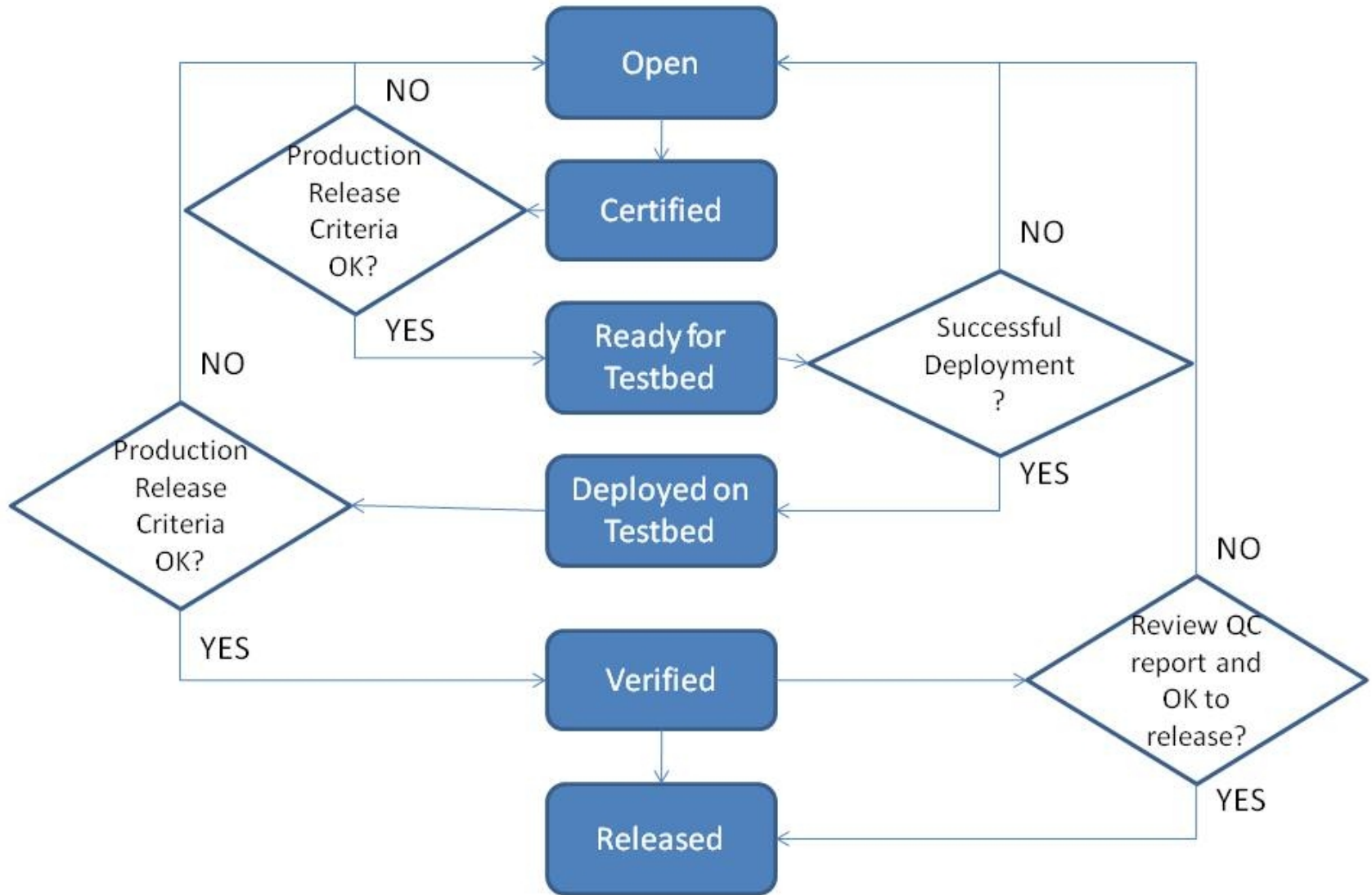
- **53** products **released**
- **48** products **certified**
- **3** products not certified, **nor released**
- **5** products not certified, but **released**
- **57** products **verified**
- **39** products **not fully compliant**
- **16** products **highly compliant** (*many checks marked with Yes*)
- **2** products **fully compliant** (*all checks marked with Yes*) 3.50%

From EMI 1 to EMI 1 Updates

- New Release Task state transition process adopted
- Tasks are moved from **Certified** to **Ready for Testbed** if *Production Release Criteria* are meet. During this transition, minor issues are communicated to PTs
- While products are deployed on Testbed, PTs can fix their tasks according to former QC feedback



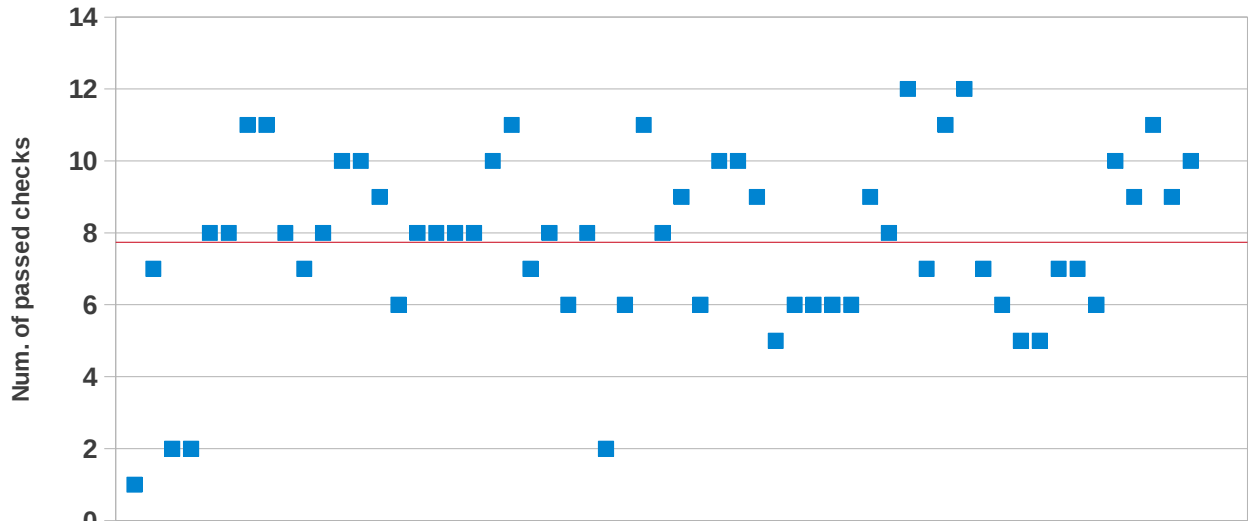
State transition process



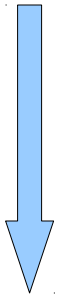
EMI 1 Updates (from 1 to 7)

- **35** products **released**
- **33** products **fully verified**
- **2** products released, but **not fully verified**
- **2 products** put back to **Open**
- **20** products **highly compliant**
- **5** products **fully compliant** (*all checks marked with Yes*)
- **15** products **not fully compliant**
- **12 products** postponed on the release schedule

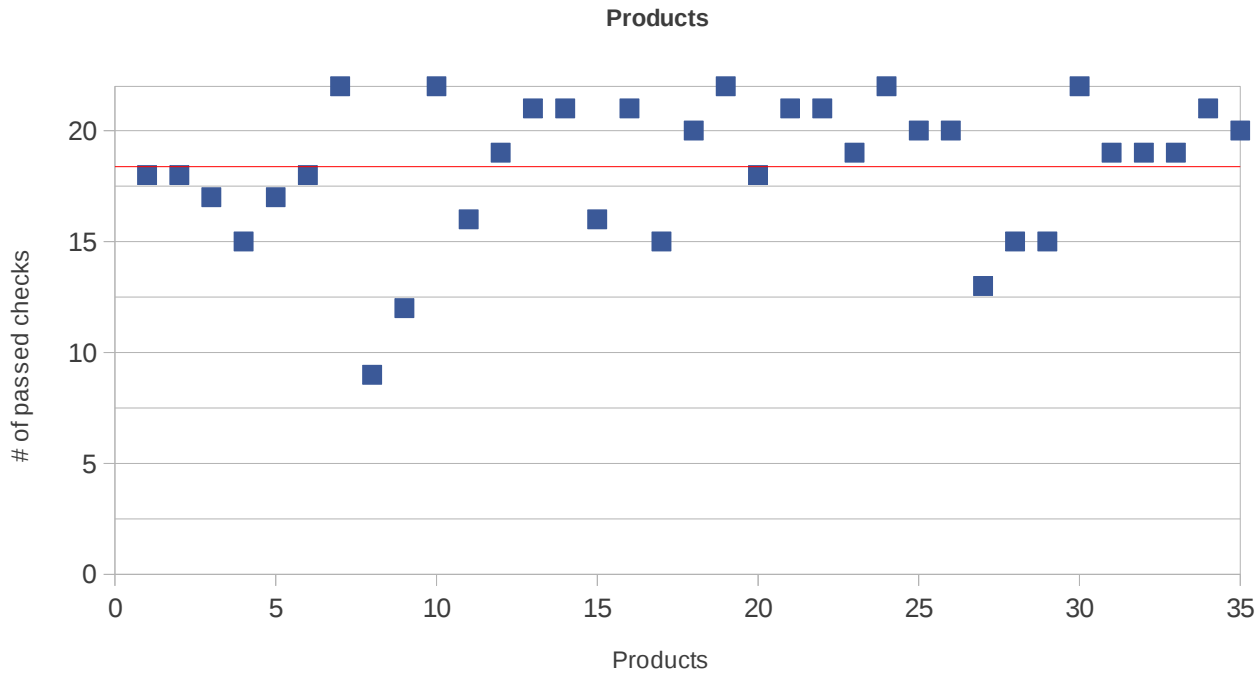
Passed check distribution



EMI 1



EMI Updates



Products

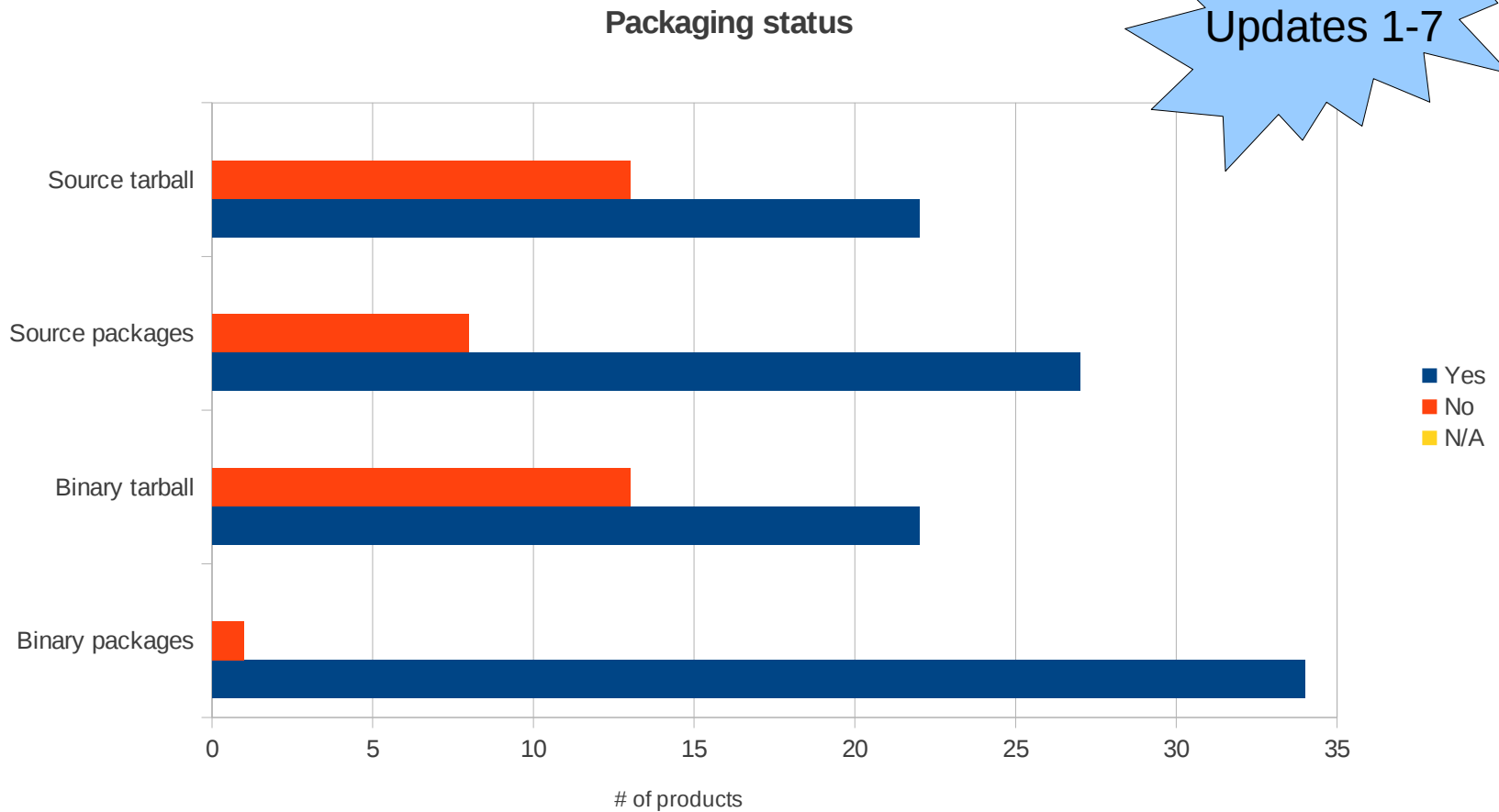
Products

5 starts products

- Argus 1.4.0
- BDII core 1.1.0 (v1.0.2)
- FTS 2.2.6
- L&B 3.0.12
- UNICORE UVOS 1.4.2

Verification activity numbers

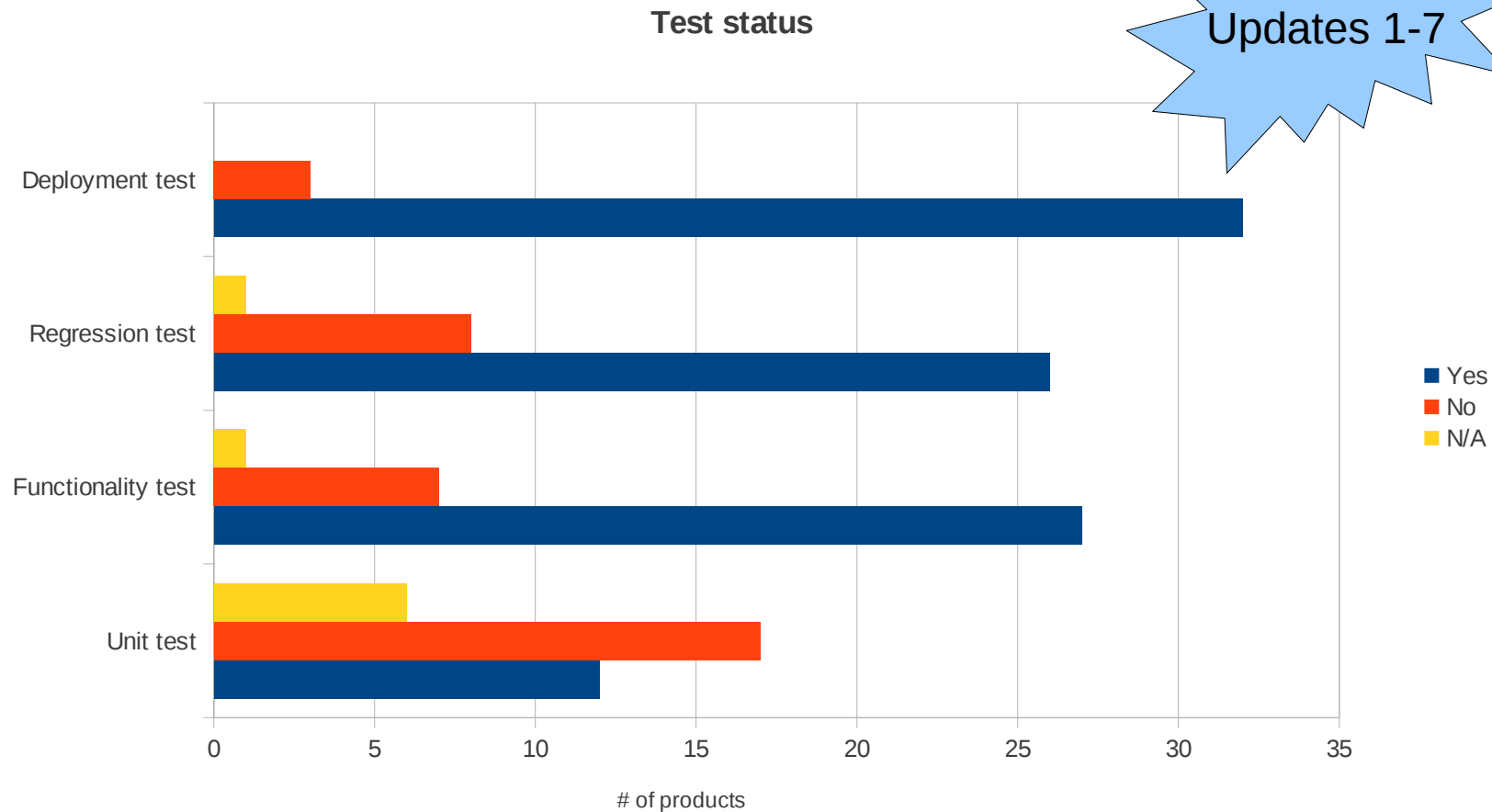
EMI 1
Updates 1-7



Availability of software packages

Verification activity numbers

EMI 1
Updates 1-7



Availability of tests

General comments

- Overall better results have been observed
- Verification process has significantly improved as well as the degree of compliance of released products
- The new release process permits to better interact with PTs and not block the verification activity if minor issues are discovered
- PTs seem to have correctly understood quality policy
- Number of *conflicts* between QC and PTs has significantly reduced
- QC approach can now become progressively more rigours

General comments

- Software packages are not always linked to respective tasks
- ETICS configurations often result unlocked (minor issue, the verification process is not stopped in this case)
- The lacking of Unit and Regression tests causes most of non conformities
- Reports often do not comply with defined templates
- **The adoption of the dashboard will make verification less flexible!**

Five hints to pass the verification

- Be collaborative!
 - Many problems come from misunderstandings, lack of information...
- Use template to create your reports
- Provide explanation why any mandatory information is missing or marked as N/A
- Do not spread information across different documents. We won't look at them!
- Write more tests ;)

Next

- Security assessments tracked in SA2 Tracker
- Security Training (TBD)
- Verification of future tasks done through the new dashboard
- Code test metrics provided by SA2.3

Code test metrics report

After each
update

- RPMlint
(to check common errors in RPM packages)
- Number of Test Plans
(<https://twiki.cern.ch/twiki/bin/view/EMI/QCTestPlan>)
- Number of Test Reports per released product
- Number of Mandatory Tests per released product
- Number of RfCs with regression test
- Number of RfCs/Development tasks with functionality tests
- Number of passed checks

Questions/issues/improvements

- How do we demonstrate that QA work is really improving products' quality?
 - ***PTs' primarily interest is to decrease bugs***
- Schema for Certification/Test reports
- One cert/test report covering all platforms?
 - Why not, but what's about the dashboard?
- Update release on 4-weeks basis
 - How much time do we reserve to analysis QA reports then?
 - How do we track quality RfC?
- Naming policy for test names



Thank you

EMI is partially funded by the European Commission under Grant Agreement INFSO-RI-261611