

Project Status and NA1



Alberto Di Meglio, CERN

*3rd EMI All-Hands Meeting
Padova, 17 October 2011*

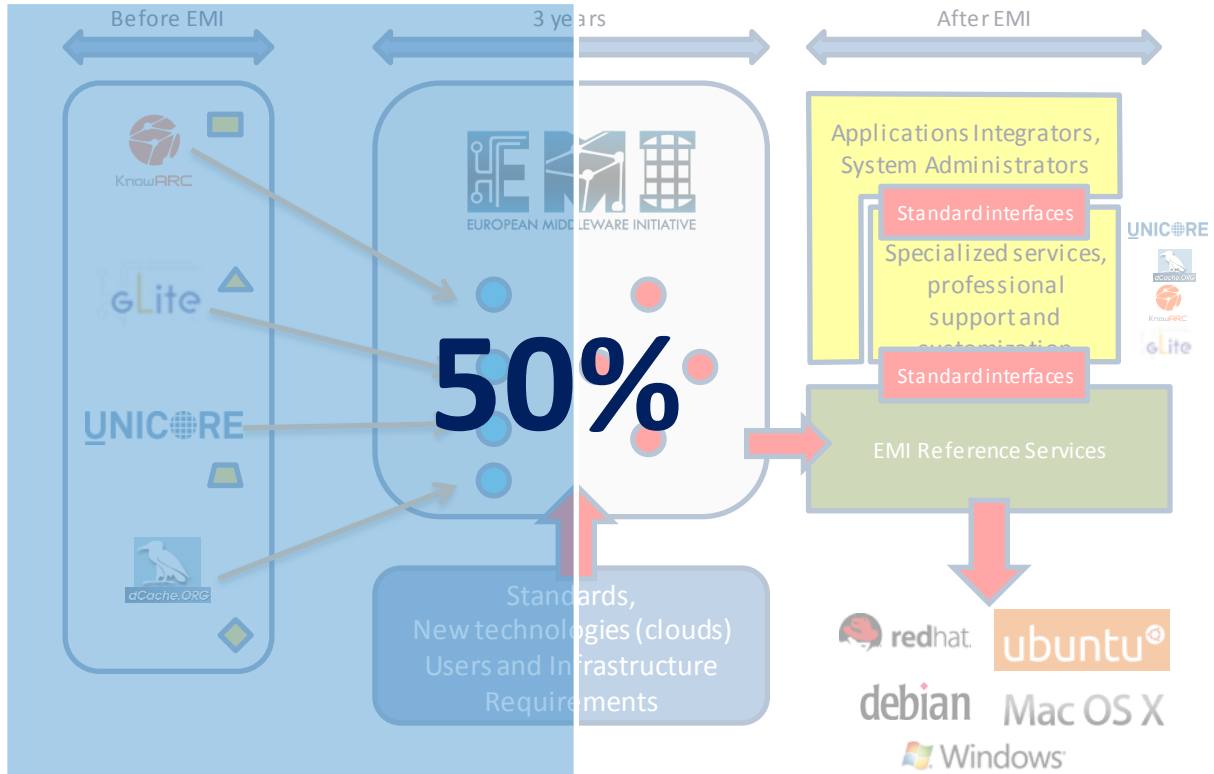
EMI is partially funded by the European Commission under Grant Agreement RI-261611

- Summary of Achievements
- Review Recommendations
- Year 2 Outlook

- EMI 1 Kebnekaise
 - Release in May, 8 updates, release/certification process in place, most of it fed into UMD
- Year 2 innovation
 - development plans done, new development tracker, task being implemented and monitored
- QA process
 - well established, working on revision of policies, updates for SL6 and Debian and support of the future open source model

- User support
 - structure and process in place, SLA signed, monitoring not trivial due to insufficient support from the tools, but EMI workarounds in place
- Dissemination and Relationships
 - Regular participation in numerous events, EMI video, several MoUs signed

EMI Middleware Evolution



- 1. Appoint a Strategy Director to the project who has strong “marketing/relations building” capabilities so he/she can build bridges between the various User Groups as well as deploying a more Pro-Active partnering approach with the other projects in the DCI ecosystem

- 2. Improve cost forecasting, reporting and management so that all individual partners and the overall project, clearly link the actual costs incurred with the work carried out and compare these against those planned in the DoW.

- 3. Improve resource reporting, particularly time (Person Month) and financial consumptions against forecast rates of consumption. Try to avoid different reporting principles by the partners, which result in a distorted overall reporting pattern (e.g. reporting of travel costs).

- 4. Implement the changes to the project, which were presented to the reviewers, taking into consideration the suggestions made elsewhere in this review report.

- 5. Reduce the number of deliverables and improve their coherence as suggested elsewhere in this review report. Reduce the number of actual printed pages of the various reports.

- 6. Improve the sustainability plans and commit to a specified period of support for EMI software and services after the end of the project (e.g. the Monte Bianco release), which is more convincing than the currently anticipated 3 months.

- 7. Improve the outreach, promotion and marketing of the project and its values.
- 8. Improve online promotion and marketing to increase traffic to website so that many more people will use the website than the currently reported numbers.
- 9. Improve the website, taking into consideration the suggestions made elsewhere in this review report.

- 10. Increase the level of detail in technical deliverables, using examples only of the work done; full technical designs are not required.

- 11. Establish a formal relationship with PRACE.

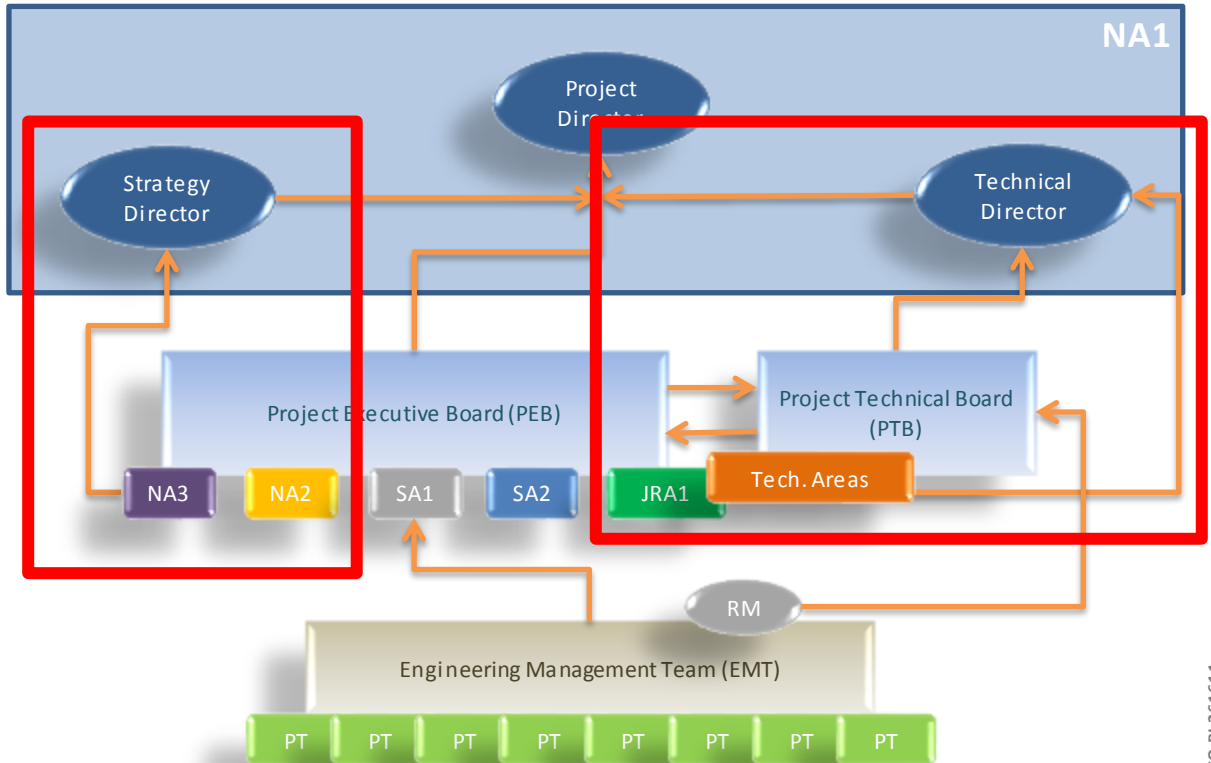
- 12. Improve the industrial engagement in order to achieve a more clearly informed and forward looking sustainability strategy, and which leverages upon the lessons learnt from previous relationships (e.g. Google)

- 13. Establish a clear EMI market positioning with respect to Cloud computing.
Understand and focus on the security issues around virtualisation and consider how grid technologies do not present these issues.

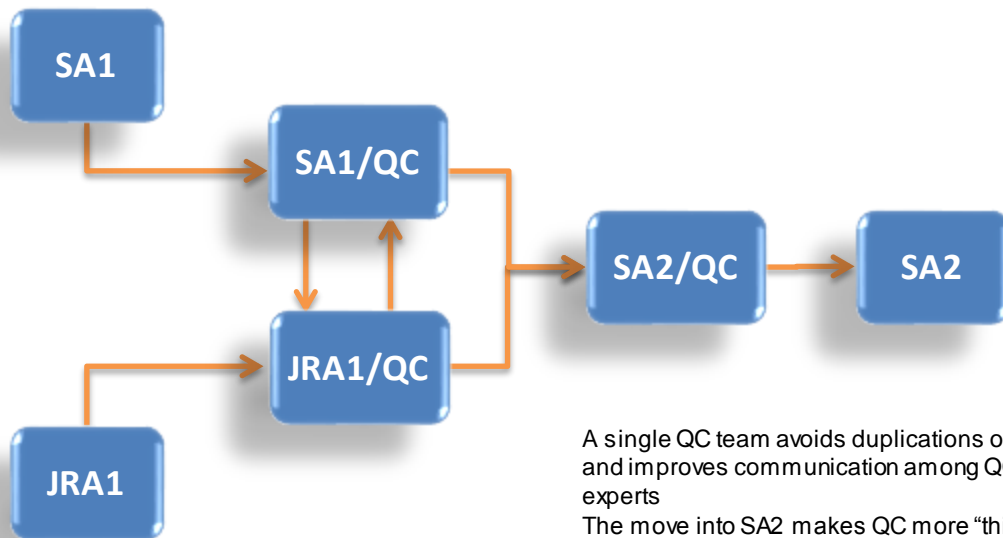
- 14. The visibility of EMI (as opposed to host institutes or companies) should be increased by those participating in standards body-related activities.

- Project Structure Changes
- Sustainability, Dissemination, Long-Term Collaborative Strategies
- Technical Tasks

Project Structure



Single QC Team in SA2



A single QC team avoids duplications of work and improves communication among QC experts
The move into SA2 makes QC more “third-party” with respect to SA1 and JRA1 and improves the communication with the QA team

- Major focus for the project in Year 2
- Define what the sustainability interests of each partners are (Products? Knowledge? Services?)
- Establish more direct links with sites and users encouraging use of EMI products and services, making EMI more visible

- Better, more open adoption of standard open source practices
 - Packaging and distribution
 - Collaborations and contributions
- Open Software Initiative
 - Organizational/legal structure (e.g. Apache or Eclipse)
 - Front-end for existing repos (not a github clone)
 - Social aspects of software development and use
 - Brokering of services and information

- A “more aggressive” approach has been recommended
 - More (pro)active support from all project members to NA2 dissemination efforts
 - Promotion of EMI as a whole and of individual services (OS initiative can be an important channel)
 - How to identify and reach out to users is a big challenge (dedicated DCI meeting next week)

- Many presentations at the AH
- Some aspects have strong impact on sustainability
 - Consolidation (session Tue morning)
 - Clouds and Virtualization (session Tue afternoon)
 - Standardization (various sessions)
 - Extend platform compatibility, packaging and distribution responsibilities of the PTs (SA1 and SA2 sessions, EPEL Tutorial)