

# Tier1 Report 27 /11/2024

## Activity for Last Week:

- Echo Ceph Upgrade complete
  - GWs upgrade started
- Stratum1 enabled for egi repos
- RAL site network outage during at risk 27-11 (CMS farm drain)
- Antares FE rebooted
- CMS-AAA GW rebooted
- Ongoing configuration with new helpdesk.ggus.eu

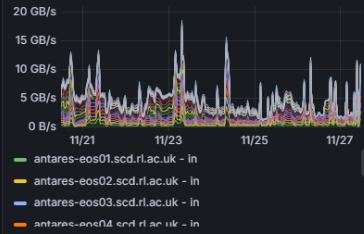
## Changes/News for upcoming week

- Batch
- Echo
- Tape
- Grid Services
- Network

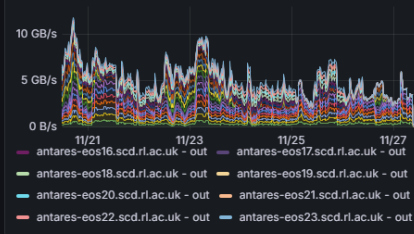
**New Summary Dashboard in progress.**

<https://vande.gridpp.rl.ac.uk/next/d/egvWB4Vz/tier1-vo-service-summary?orgId=1&refresh=1m>

EOS node network rates in



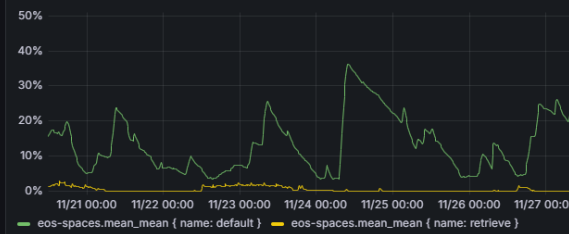
EOS node network rates out



Antares



Antares EOS Sospace Fullness

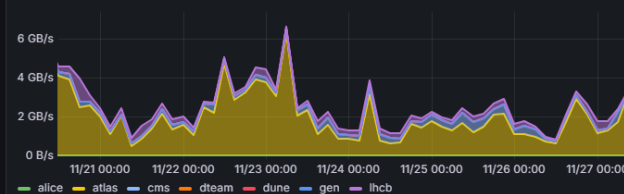


Echo

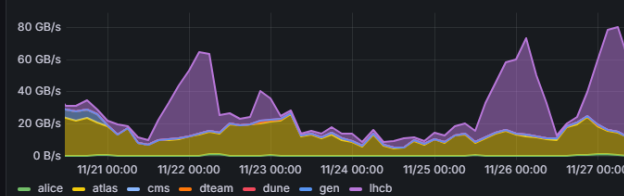
Joint xroot/WebDav Gateway Health

ceph-gw14.gridpp.rl.ac.uk	ok
ceph-gw15.gridpp.rl.ac.uk	ok
ceph-gw16.gridpp.rl.ac.uk	ok
ceph-svc01.gridpp.rl.ac.uk	ok
ceph-svc02.gridpp.rl.ac.uk	ok
ceph-svc03.gridpp.rl.ac.uk	ok
ceph-svc05.gridpp.rl.ac.uk	ok
ceph-svc07.gridpp.rl.ac.uk	ok
ceph-svc08.gridpp.rl.ac.uk	ok
ceph-svc09.gridpp.rl.ac.uk	ok
ceph-svc11.gridpp.rl.ac.uk	ok
ceph-svc13.gridpp.rl.ac.uk	ok
ceph-svc14.gridpp.rl.ac.uk	ok
ceph-svc15.gridpp.rl.ac.uk	ok
ceph-svc17.gridpp.rl.ac.uk	ok

Echo Write by VO



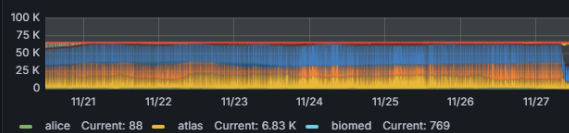
Echo Read by VO



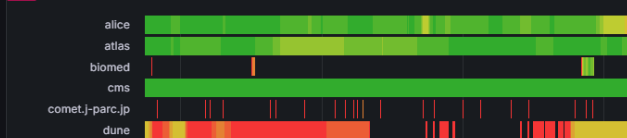
Batch Services

Available U	Av	To	Available C	Used Cores	Ru	Efficiency	Monthly Average Cores in use / allocation					
75.3%	99.7%	75.1%	64731	48762	33261	90.6%	group_ALICE	group_ATLAS	group_CMS	group_LHCb	group_LIGO	group_NONLHC
							33%	63%	213%	131%	0%	53%

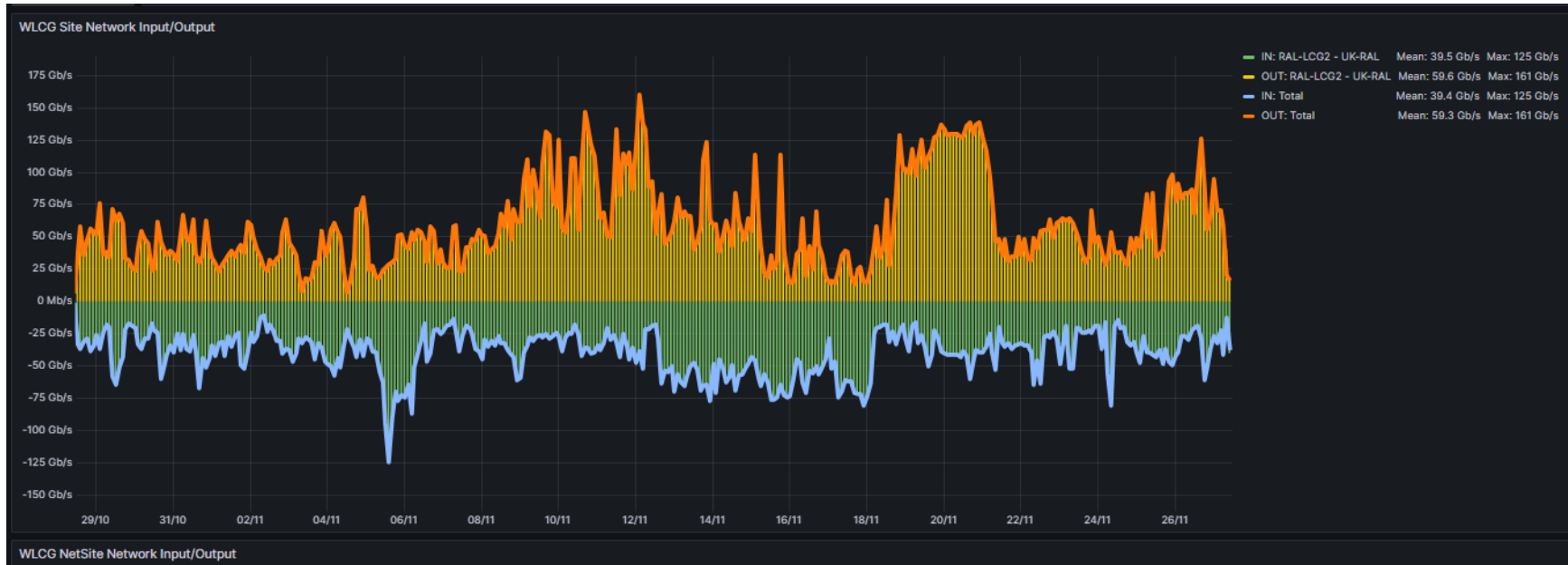
Cores in use



Job Time Ratios

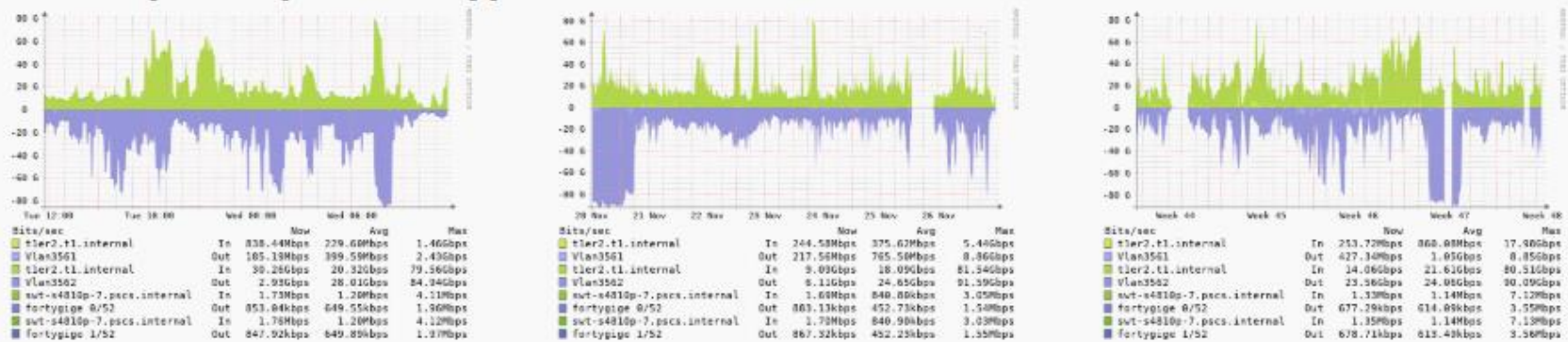


<https://monit-grafana-open.cern.ch/d/Mwuxgoglk/wlwg-site-network?orgId=16&var-site=RAL-LCG2&var-binning=1h&from=now-30d&to=now>

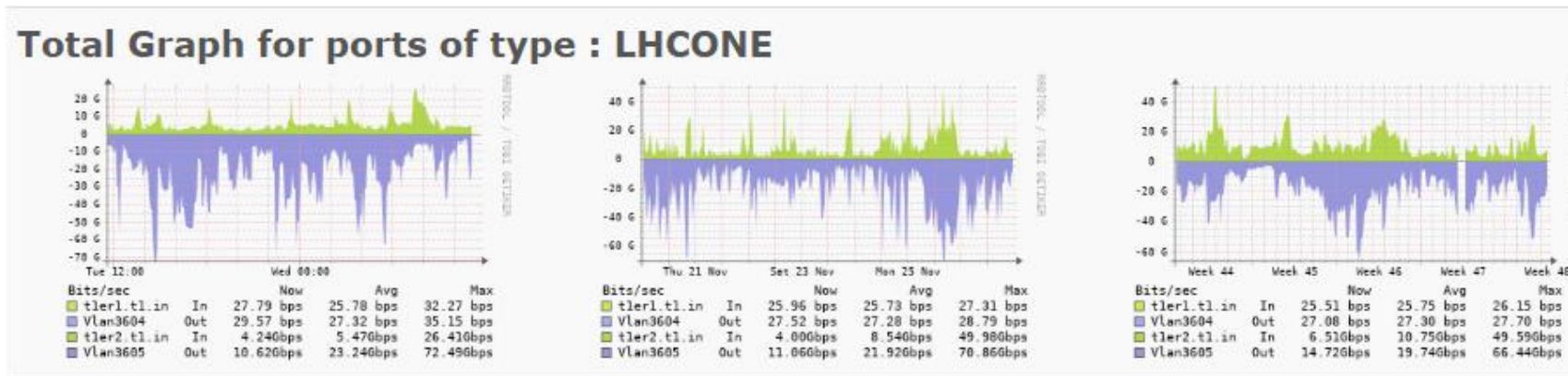


<https://librenms.gridpp.rl.ac.uk/ifttype/type=LHCOPN>

## Total Graph for ports of type : LHCOPN



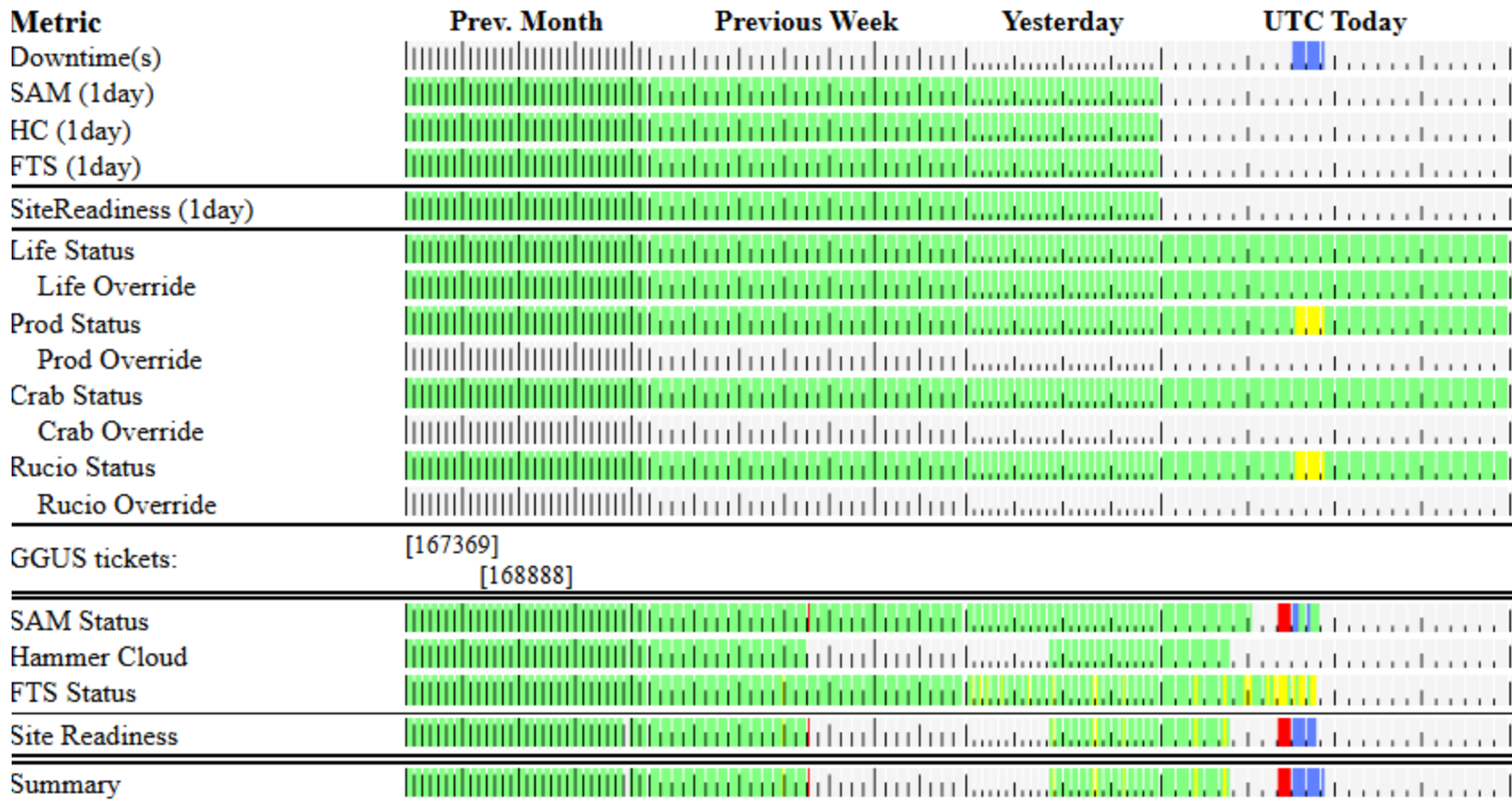
<https://librenms.gridpp.rl.ac.uk/ifttype/type=LHCONE>



CMS: [https://cmsst.web.cern.ch/sitereadiness/report.html#T1\\_UK\\_RAL](https://cmsst.web.cern.ch/sitereadiness/report.html#T1_UK_RAL)

<b>GGUS Tickets: 165969</b>																	
<b>Downtimes:</b>																	
<b>SAM Status:</b>	100%	98%	100%	99%	100%	100%	100%	100%	100%	100%	100%	100%	100%	100%	100%	<b>D</b>	
<b>Hammer Cloud:</b>	100%	100%	99%	99%	100%	100%	100%	100%	99%	100%	100%	100%	100%	100%	100%		
<b>FTS Status:</b>	100%	0%	100%	0%	100%	91%	0%	100%	0%	100%	0%	0%	0%	0%	100%	0%	
<b>Site Readiness:</b>	100%	94%	97%	95%	99%	53%	97%	94%	99%	99%	93%	50%	0%	0%	0%	57%	
<b>Life Status:</b>	[Green bar]																
<b>Prod Status:</b>	[Green bar]																
<b>CRAB Status:</b>	[Green bar]																
<b>Rucio Status:</b>	[Green bar]																
	11	12	13	14	15	16	17	18	19	20	21	22	23	24	25	26	27
	Nov																

[https://cmsst.web.cern.ch/siteStatus/detail.html?site=T1\\_UK\\_RAL](https://cmsst.web.cern.ch/siteStatus/detail.html?site=T1_UK_RAL)



**ATLAS:**

<https://hammercloud.cern.ch/hc/app/atlas/siteoverview/?site=RAL-LCG2&startTime=2024-07-17&endTime=2024-07-24&templateType=isGolden>

1184 (functional) -...

1283 (functional) -...

1272 (functional) -...

1273 (functional) -...

Template: 1184 (functional) - PFT mc15 Sim\_tf 21.0.15 FC

Time	0	1	2	3	4	5	6	7	8	9	10	11	12	13	14	15	16	17	18	19	20	21	22	23	Eff[%]	
27/11/24	s	c	c	c	c	c	c	c	c	s	s	m	c	c	c	c	r	0	0	0	0	0	0	0	0	92
26/11/24	c	c	c	c	c	c	c	c	c	c	c	c	c	c	c	c	c	c	c	c	c	c	c	c	c	100
25/11/24	c	c	c	s	c	c	c	c	c	s	c	c	c	c	c	c	c	c	c	c	c	c	c	c	c	100
24/11/24	c	c	c	c	c	c	c	c	c	c	c	c	c	c	c	c	c	c	c	c	c	c	c	c	c	100
23/11/24	c	c	c	c	c	c	c	c	c	c	c	c	s	c	c	c	c	c	c	c	c	c	c	c	c	100
22/11/24	c	c	c	c	c	c	c	c	c	c	c	c	c	c	c	c	c	c	c	c	c	c	c	c	c	100
21/11/24	c	c	c	c	c	c	c	c	c	c	c	m	c	c	c	c	c	c	c	c	c	c	c	c	c	99
20/11/24	c	c	c	c	c	c	c	c	c	c	c	c	s	c	c	c	c	c	c	c	c	c	c	c	c	100

### Error Report

[+] Expand

10 entries per page

Search:

Showing 1 to 4 of 4 entries

« < 1 > »

## RAL-LCG2\_MCORE

1184 (functional) -...

1283 (functional) -...

Template: 1184 (functional) - PFT mc15 Sim\_tf 21.0.15 FC

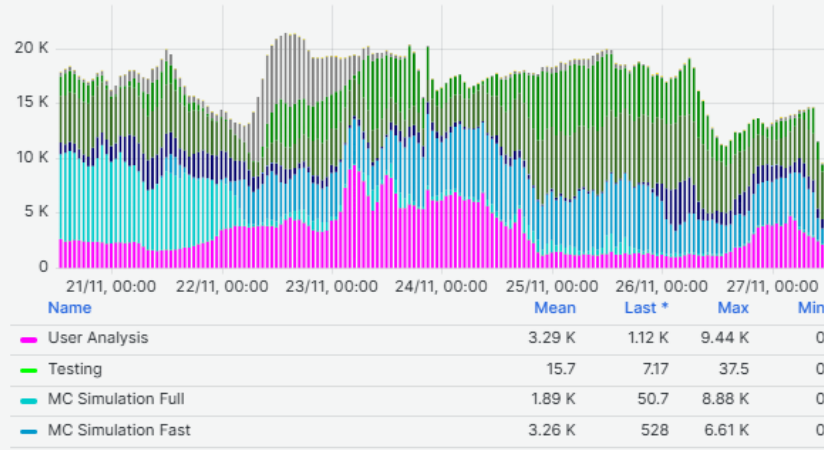
Time	0	1	2	3	4	5	6	7	8	9	10	11	12	13	14	15	16	17	18	19	20	21	22	23	Eff[%]
27/11/24	s	c	s	c	s	s	s	c	s	c	s	m	0	0	0	0	0	0	0	0	0	0	0	0	100
26/11/24	s	s	s	c	s	c	s	s	s	s	s	s	c	s	s	c	s	c	s	c	s	c	s	c	100
25/11/24	s	s	s	s	s	s	c	s	c	s	s	s	c	s	s	s	s	c	s	s	s	s	s	s	100
24/11/24	s	c	s	s	s	s	s	s	s	s	s	s	c	s	c	s	c	c	c	s	s	c	c	c	100
23/11/24	s	s	s	c	s	s	c	s	s	c	s	c	s	s	c	s	s	c	c	c	s	c	s	c	100
22/11/24	s	s	s	s	c	c	c	s	c	s	c	s	c	s	s	s	c	s	s	s	s	s	s	c	100
21/11/24	s	s	s	s	s	s	s	s	c	s	s	c	s	c	s	s	s	s	s	s	s	s	c	c	100
20/11/24	s	c	c	s	s	s	s	s	s	s	c	s	s	s	s	s	s	s	s	s	c	s	s	c	100

### Error Report

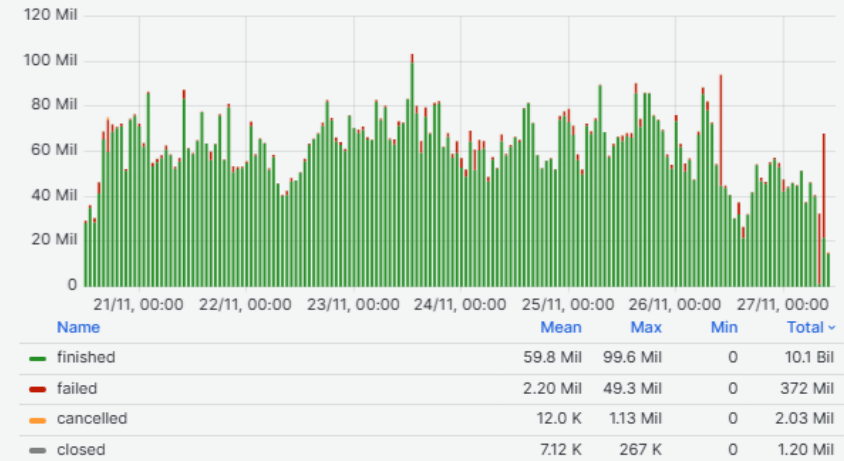
[+] Expand

Site Dashboard: [https://monit-grafana.cern.ch/d/D26vElGGz/site-oriented-dashboard?orgId=17&var-bin=1h&var-groupby\\_jobs=adactivity&var-groupby\\_ddm=activity&var-cloud=All&var-country=All&var-federation=All&var-site=RAL-LCG2&var-computingsite=All&var-jobtype=All&var-es\\_division\\_factor=1&var-measurement=ddm\\_transfer\\_1h](https://monit-grafana.cern.ch/d/D26vElGGz/site-oriented-dashboard?orgId=17&var-bin=1h&var-groupby_jobs=adactivity&var-groupby_ddm=activity&var-cloud=All&var-country=All&var-federation=All&var-site=RAL-LCG2&var-computingsite=All&var-jobtype=All&var-es_division_factor=1&var-measurement=ddm_transfer_1h)

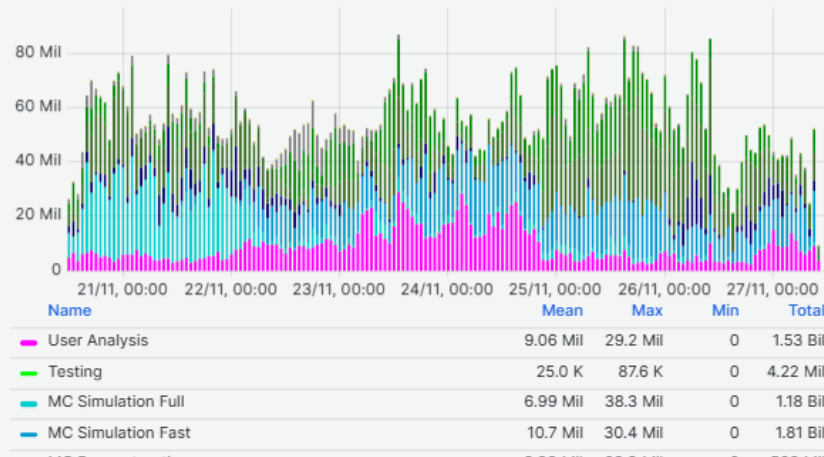
Slots of Running jobs



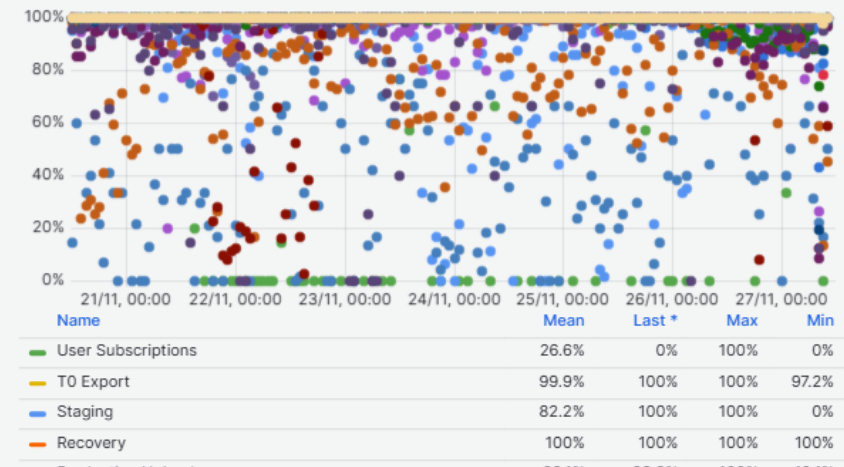
WallClock Consumption of Successful and Failed Jobs - Time Stacked Bar Graph



CPU Consumption: All jobs in Seconds



Transfer Efficiency



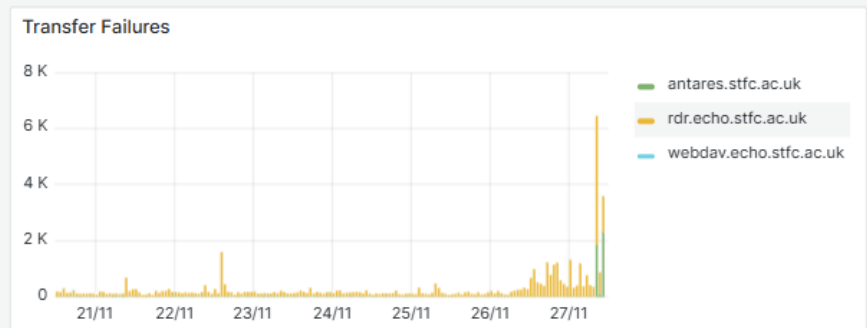
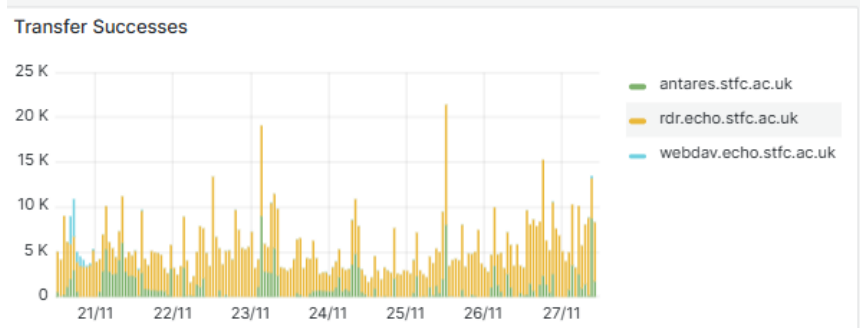
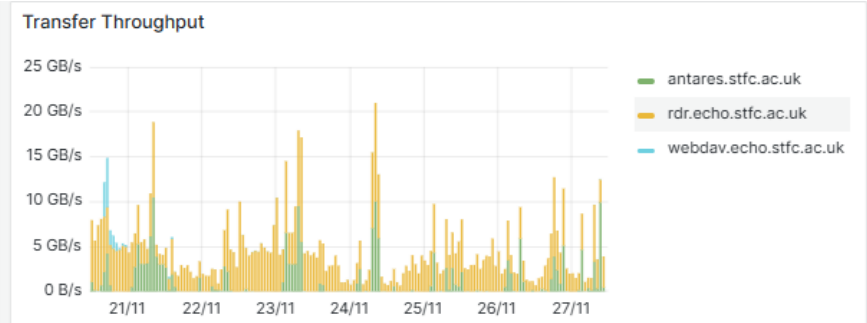
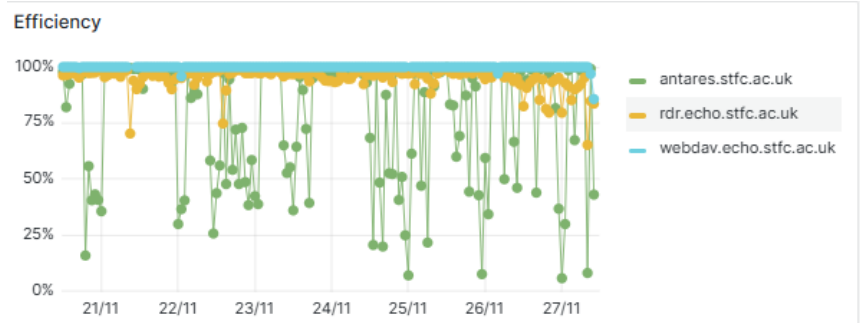
Walltime efficiency based on success/all accomplished jobs

Volume per rse

Transfer Rates

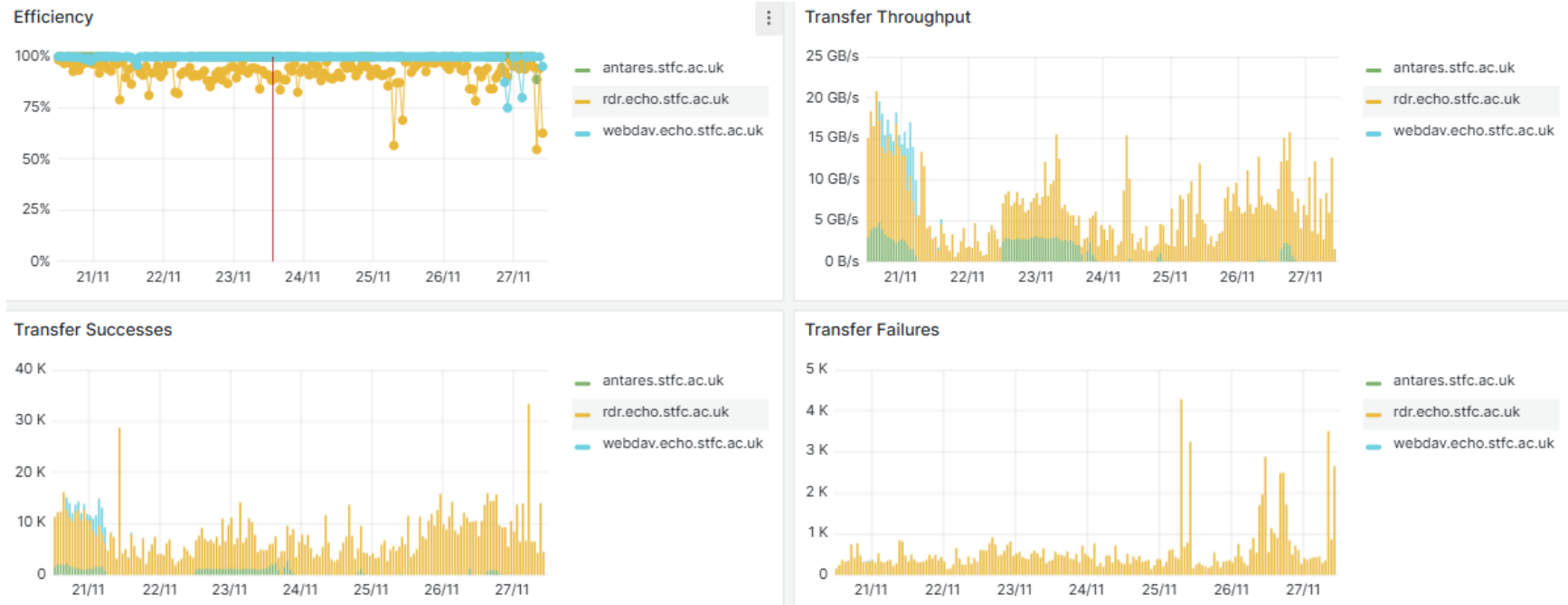
<https://tinyurl.com/RAL-Ingest-FTS>



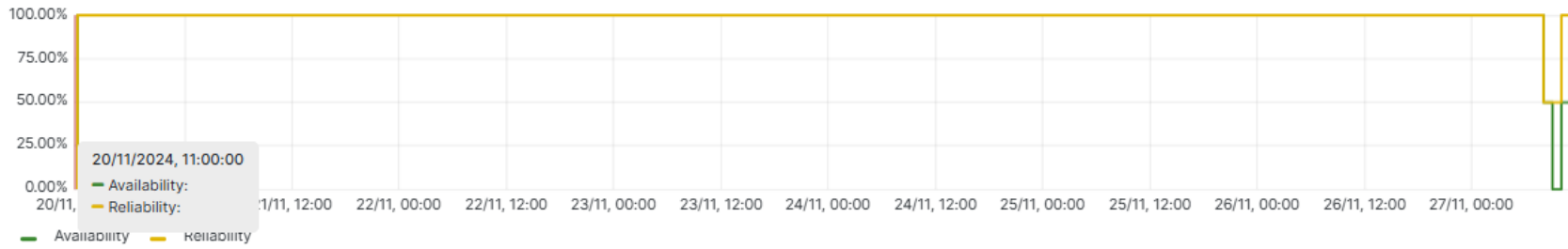


## RECALL

<https://tinyurl.com/RAL-recall>



**LHCb:** [https://monit-grafana.cern.ch/d/000000619/wlcb-sitemon-historical-profiles?orgId=20&from=now-30d&to=now&var-vo=lhcb&var-profile=LHCB\\_CRITICAL&var-dst\\_tier=1&var-dst\\_country=UK&var-dst\\_federation=All&var-dst\\_experiment\\_site=LCG.RAL.uk&var-service\\_flavour=ARC-CE&var-dst\\_hostname=All&var-recomputation=status](https://monit-grafana.cern.ch/d/000000619/wlcb-sitemon-historical-profiles?orgId=20&from=now-30d&to=now&var-vo=lhcb&var-profile=LHCB_CRITICAL&var-dst_tier=1&var-dst_country=UK&var-dst_federation=All&var-dst_experiment_site=LCG.RAL.uk&var-service_flavour=ARC-CE&var-dst_hostname=All&var-recomputation=status)

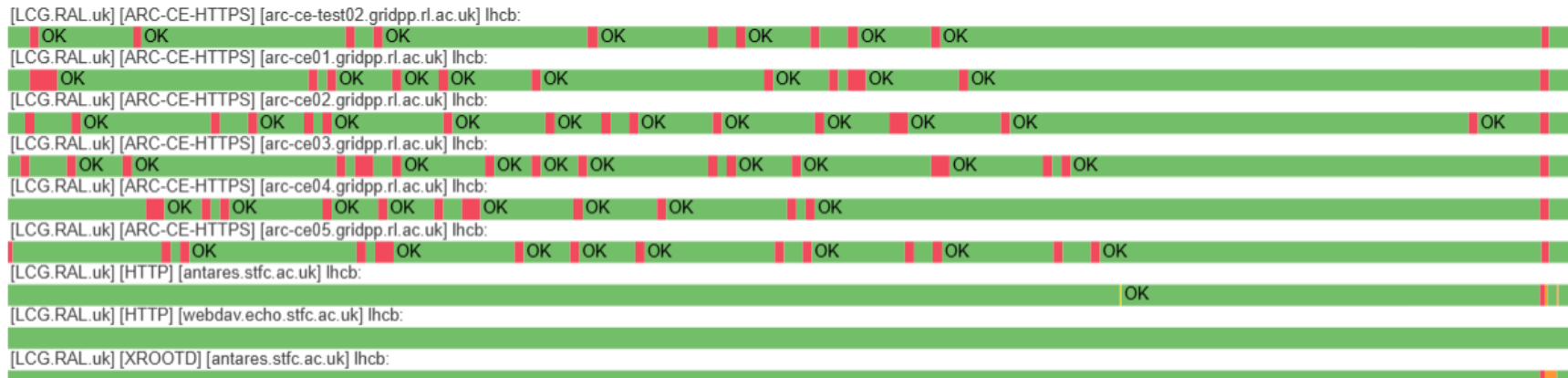


Site Status

LCG.RAL.uk:



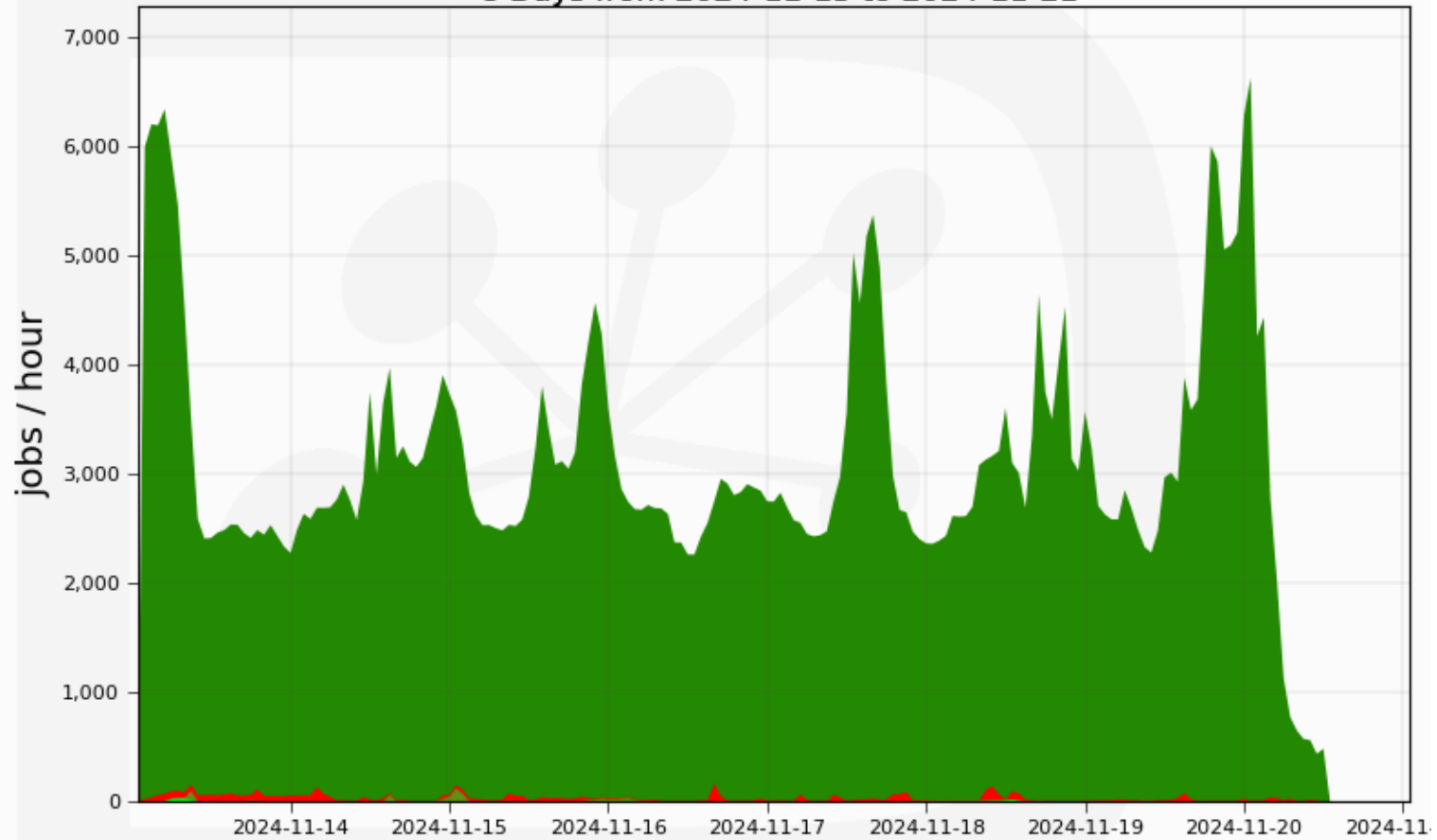
Endpoint Status



Jobs:

### Jobs by FinalMajorStatus

8 Days from 2024-11-13 to 2024-11-21



Max: 6,619, Average: 2,920

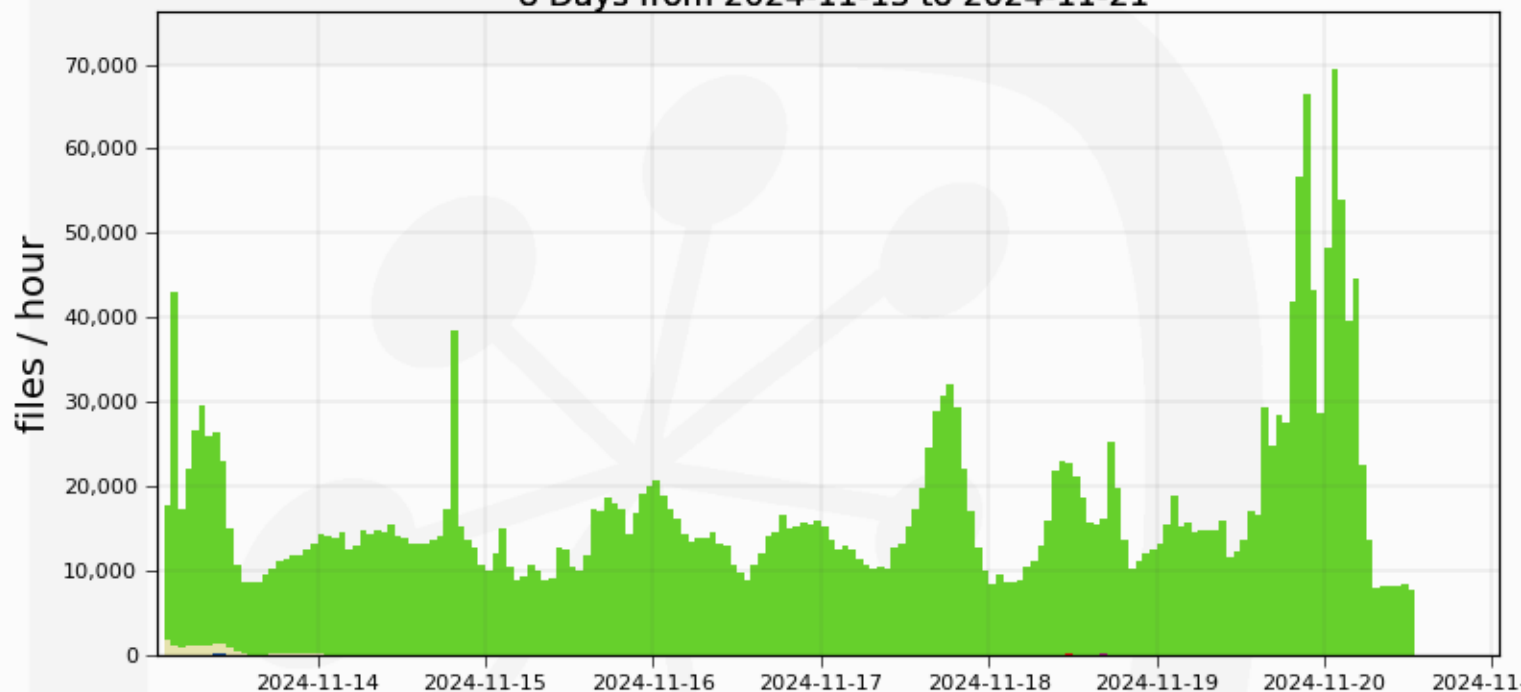
Done 99.1% Failed 0.8% Rescheduled 0.1% Completed 0.0%

Generated on 2024-11-20 11:50:47 UTC

Transfers to RAL:

### Transfers to RAL

8 Days from 2024-11-13 to 2024-11-21



Max: 69,330, Average: 15,999

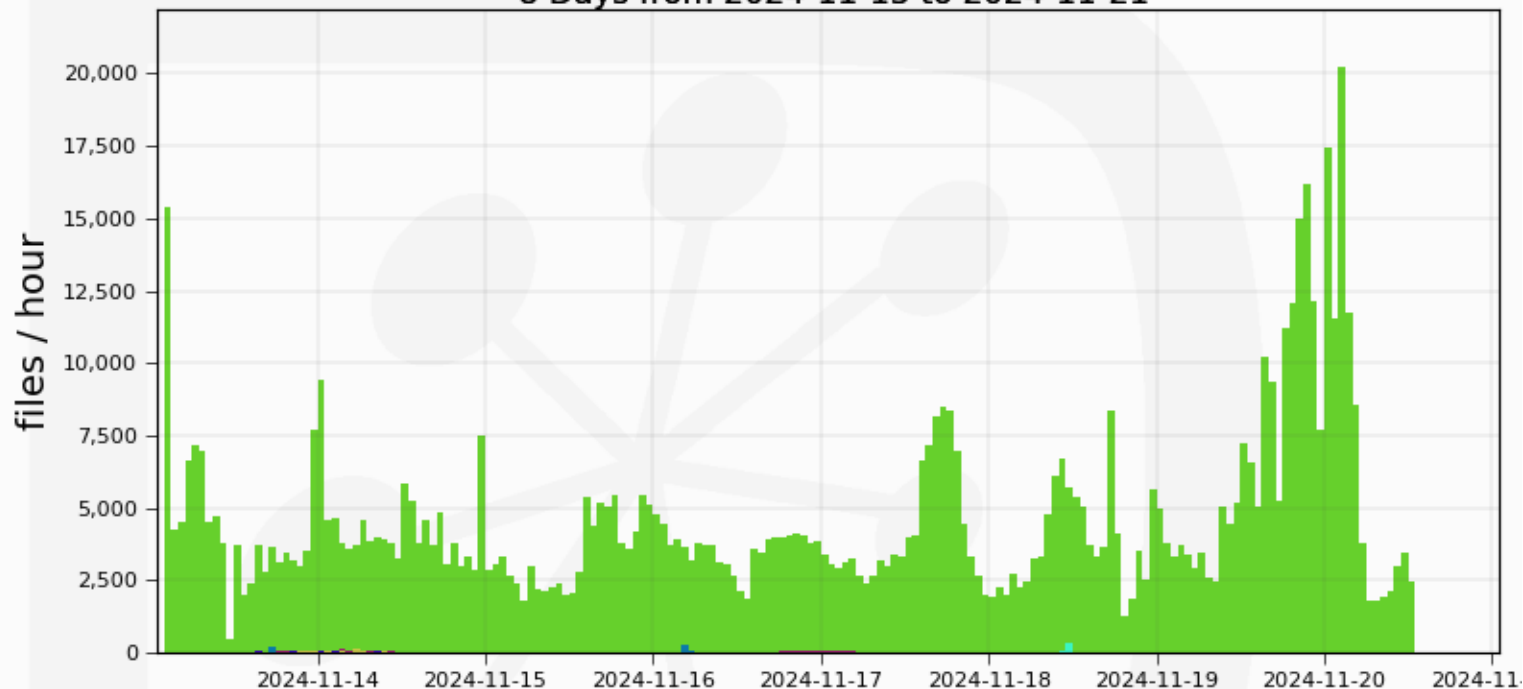
■ Succeeded	99.3%	■ DIRAC.Kabre.cr -> RAL-BUFFER	0.0%
■ DIRAC.HLTFarm.lhcb -> RAL-BUFFER	0.4%	■ LCG.ECDF.uk -> RAL-BUFFER	0.0%
■ Beijing_MC-DST -> RAL_MC-DST	0.1%	■ LCG.LAPP.fr -> RAL-FAILOVER	0.0%
■ LCG.NIPNE-07.ro -> RAL-BUFFER	0.1%	■ LCG.JINR.ru -> RAL-BUFFER	0.0%
■ LCG.NIPNE-07.ro -> RAL-FAILOVER	0.0%	■ LCG.JINR.ru -> RAL-FAILOVER	0.0%
■ DIRAC.HLTFarm.lhcb -> RAL-USER	0.0%	■ LCG.Manchester.uk -> RAL-BUFFER	0.0%
■ Beijing_MC-DST -> RAL-ARCHIVE	0.0%	■ LCG.Beijing.cn -> RAL-BUFFER	0.0%
■ DIRAC.Client.DE -> RAL-USER	0.0%	■ LCG.RAL.uk -> RAL-BUFFER	0.0%
■ LCG.LAPP.fr -> RAL-BUFFER	0.0%	... plus 147 more	

Generated on 2024-11-20 11:50:50 UTC

Transfers from RAL:

# Transfers from RAL

8 Days from 2024-11-13 to 2024-11-21



Max: 20,195, Average: 4,274

■ Succeeded	99.5%	■ RAL-ARCHIVE -> DIRAC.Client.ch	0.0%
■ RAL_MC-DST -> Beijing-ARCHIVE	0.2%	■ RAL-BUFFER -> DIRAC.HLTfarm.lhcb	0.0%
■ RAL-FAILOVER -> Beijing-BUFFER	0.1%	■ RAL_MC-DST -> DIRAC.LocalProdTest.local	0.0%
■ RAL-BUFFER -> LCG.RAL.uk	0.1%	■ RAL-USER -> DIRAC.Client.cn	0.0%
■ RAL-USER -> DIRAC.Client.ch	0.1%	■ RAL-DST -> DIRAC.Client.ch	0.0%
■ RAL-USER -> DIRAC.Client.de	0.0%	■ RAL-USER -> DIRAC.HLTfarm.lhcb	0.0%
■ RAL-USER -> LCG.ECDF.uk	0.0%	■ RAL_MC-DST -> NIPNE-07_MC-DST	0.0%
■ RAL-USER -> LCG.GRIDKA.de	0.0%	■ RAL-DST -> DIRAC.LocalProdTest.local	0.0%
■ RAL-USER -> LCG.RAL.uk	0.0%	... plus 85 more	

Generated on 2024-11-20 11:50:55 UTC

<https://tinyurl.com/aliceRALstorage>

Disk storage elements

RAL																								
AllEn SE		Catalogue statistics (1024-base units)						Storage-provided information (1024-base units)						Functional tests				Last day add tests		Demotion	IPv6			
SE Name	AllEn name	Tier	Size	Used	Free	Usage	No. of files	Type	Size	Used	Free	Usage	Version	EOS Version	add	get	rm	3rd	Last OK add	Successful	Failed	factor	add	
1. RAL - CEPH	ALICE::RAL::CEPH	1	2 PB	1.227 PB	791.8 TB	61.34%	14,014,676	CEPH	2 PB	0	2 PB	-	xrootd v5.7.0						27.11.2024 12:24	24	0		0	
<b>Total</b>			<b>2 PB</b>	<b>1.227 PB</b>	<b>791.8 TB</b>		<b>14,014,676</b>		<b>2 PB</b>	<b>0</b>	<b>2 PB</b>				<b>1</b>	<b>1</b>	<b>1</b>	<b>1</b>					<b>1</b>	

What is this about?

Custodial storage elements

RAL																							
AllEn SE		Catalogue statistics (1024-base units)						Storage-provided information (1024-base units)						Functional tests				Last day add tests		Demotion	IPv6		
SE Name	AllEn name	Tier	Size	Used	Free	Usage	No. of files	Type	Size	Used	Free	Usage	Version	EOS Version	add	get	rm	3rd	Last OK add	Successful	Failed	factor	add
1. RAL - CTA	ALICE::RAL::CTA	1	2.726 PB	1.49 PB	1.236 PB	54.67%	659,451	TAPE	209.5 TB	76.88 TB	132.6 TB	36.7%	xrootd 5.6.10-1.e19.x86_64						27.11.2024 12:11	21	3	9.821%	Test...
2. RAL - CTA_TEST	ALICE::RAL::CTA_TEST	1	1000 GB	0	1000 GB	-	-	D TAPE	1000 GB	765.7 MB	999.3 GB	0.075%	xrootd 5.6.10-1.e19.x86_64						27.11.2024 12:13	22	2	6.548%	Test...
<b>Total</b>			<b>2.727 PB</b>	<b>1.49 PB</b>	<b>1.237 PB</b>		<b>659,451</b>		<b>210.5 TB</b>	<b>76.88 TB</b>	<b>133.6 TB</b>				<b>2</b>	<b>2</b>	<b>2</b>	<b>2</b>					<b>0</b>