

Tier1 Report 08/01/2025

Activity for Last Week:

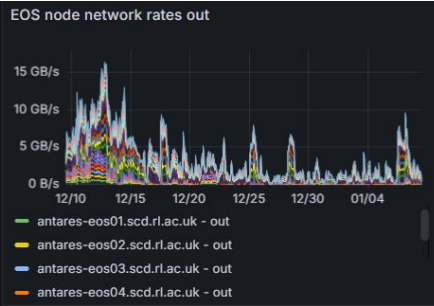
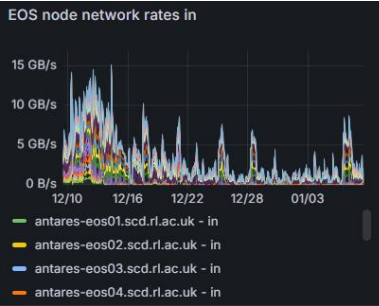
- ATLAS CE Token Issue
- LHCb xrootd connection overload

Changes/News for upcoming week

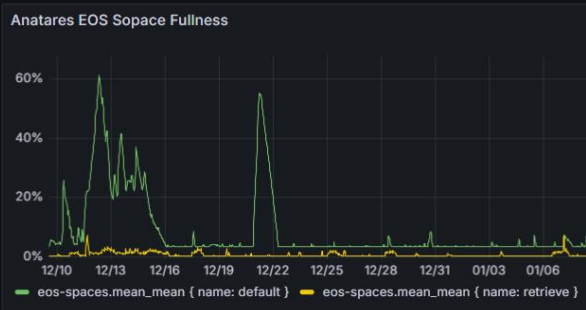
- Batch
- Echo
- Tape
- Grid Services
- Network

New Summary Dashboard in progress.

<https://vande.gridpp.rl.ac.uk/next/d/egvWB4Vz/tier1-vo-service-summary?orgId=1&refresh=1m>



Antares

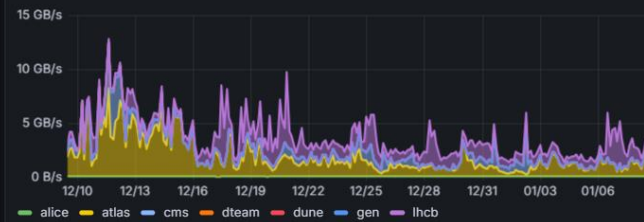


Echo

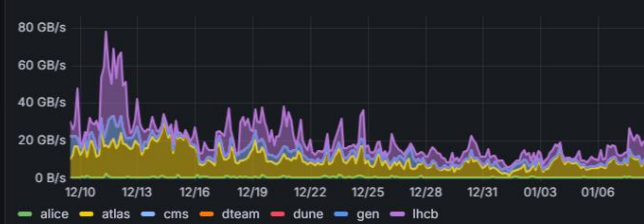
Joint xroot/WebDav Gateway Health

ceph-gw14.gridpp.rl.ac.uk	OK
ceph-gw15.gridpp.rl.ac.uk	OK
ceph-gw16.gridpp.rl.ac.uk	OK
ceph-svc01.gridpp.rl.ac.uk	OK
ceph-svc02.gridpp.rl.ac.uk	OK
ceph-svc03.gridpp.rl.ac.uk	OK
ceph-svc05.gridpp.rl.ac.uk	OK
ceph-svc07.gridpp.rl.ac.uk	OK
ceph-svc08.gridpp.rl.ac.uk	OK
ceph-svc09.gridpp.rl.ac.uk	OK
ceph-svc11.gridpp.rl.ac.uk	OK
ceph-svc13.gridpp.rl.ac.uk	OK
ceph-svc14.gridpp.rl.ac.uk	OK
ceph-svc15.gridpp.rl.ac.uk	OK
ceph-svc17.gridpp.rl.ac.uk	OK

Echo Write by VO



Echo Read by VO



Batch Services

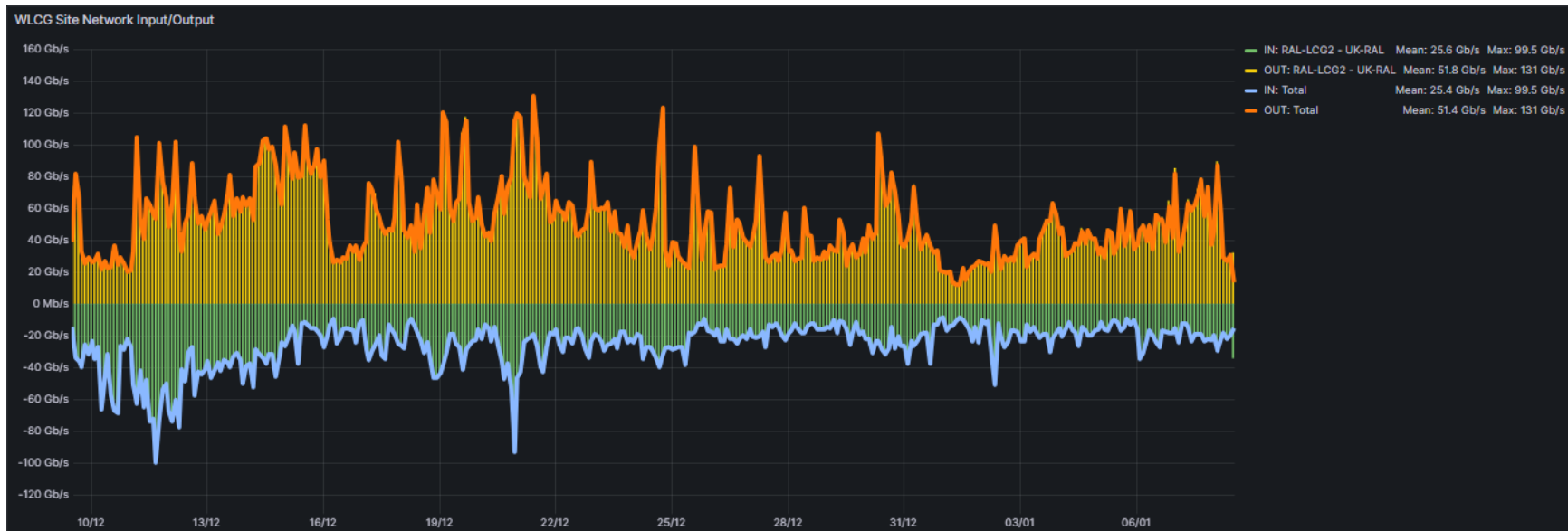
Available	A1	T1	Available	Used Con	Rt	Efficiency	Monthly Average Cores in use / allocation					
98.8%	92.4%	91.3%	60025	59330	49189	77.0%	group_ALICE	group_ATLAS	group_CMS	group_LHCB	group_LIGO	group_NONLHC
							198%	27%	103%	202%	0%	44%

Cores in use

Job Time Ratios

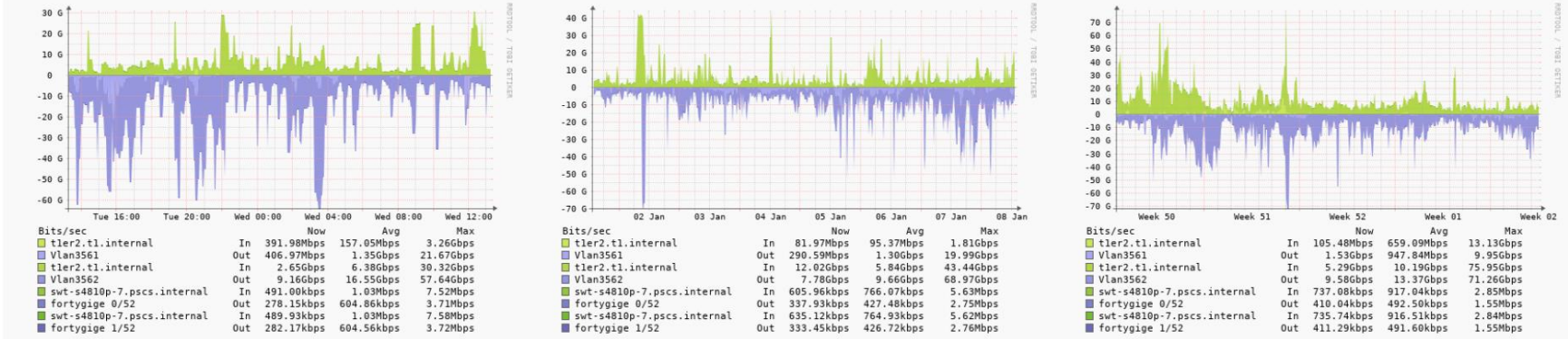


<https://monit-grafana-open.cern.ch/d/Mwuxgoglk/wlcg-site-network?orgId=16&var-site=RAL-LCG2&var-binning=1h&from=now-30d&to=now>



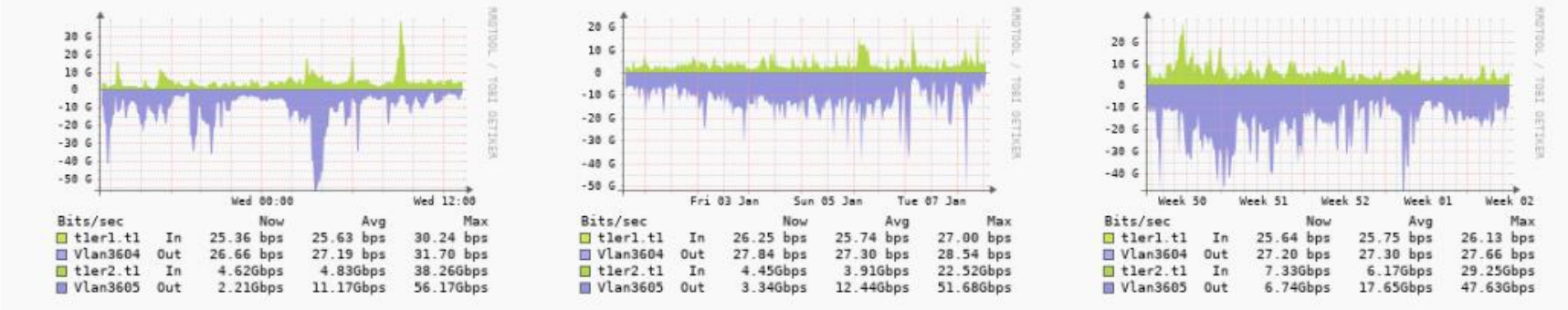
<https://librenms.gridpp.rl.ac.uk/ifttype/type=LHCOPN>

Total Graph for ports of type : LHCOPN



<https://librenms.gridpp.rl.ac.uk/ifttype/type=LHCONE>

Total Graph for ports of type : LHCONE



CMS: https://cmsst.web.cern.ch/sitereadiness/report.html#T1_UK_RAL

GGUS Tickets: 165969

Downtimes:

SAM Status: 100% 100% 100% 100% 100% 100% 100% 100% 100% 100% 100% 100% 100% 100% 100% 100%

Hammer Cloud: 100% 100% 100% 100% 100% 100% 100% 100% 100% 100% 100% 100% 100% 100% 100% 100%

FTS Status: 100% 100% 0% 100% 0% 0% 0% 0% 100% 97% 100% 0% 0% 100% 100% 100%

Site Readiness: 94% 96% 96% 99% 100% 100% 94% 97% 88% 99% 99% 89% 100% 95% 94% 99%

Life Status:

Prod Status:

CRAB Status:

Rucio Status:

23	24	25	26	27	28	29	30	31	1	2	3	4	5	6	7	8
Dec									Jan							

https://cmsst.web.cern.ch/siteStatus/detail.html?site=T1_UK_RAL

Metric	Prev. Month	Previous Week	Yesterday	UTC Today
Downtime(s)				
SAM (1day)				
HC (1day)				
FTS (1day)				
SiteReadiness (1day)				
Life Status				
Life Override				
Prod Status				
Prod Override				
Crab Status				
Crab Override				
Rucio Status				
Rucio Override				
GGUS tickets:	[167369] [168888]			
SAM Status				
Hammer Cloud				
FTS Status				
Site Readiness				
Summary				

antares.stfc.ac.uk / WEBDAV

Downtime	
SAM Service Status	
FTS Endpoint (from)	
FTS Endpoint (to)	

ATLAS:

<https://hammercloud.cern.ch/hc/app/atlas/siteoverview/?site=RAL-LCG2&startTime=2024-07-17&endTime=2024-07-24&templateType=isGolden>

1184 (functional) -... 1283 (functional) -... 1272 (functional) -... 1273 (functional) -...

Template: 1184 (functional) - PFT mc15 Sim tf 21.0.15 FC

Time	0	1	2	3	4	5	6	7	8	9	10	11	12	13	14	15	16	17	18	19	20	21	22	23	Eff[%]	
08/01/25	s	c	c	s	s	c	c	s	s	s	c	c	c	s	c	m	0	0	0	0	0	0	0	0	0	100
07/01/25	c	s	s	c	c	s	s	c	c	s	s	c	c	c	s	c	c	c	c	c	c	c	s	s	s	100
06/01/25	c	c	c	s	s	s	c	c	s	s	s	s	s	c	s	c	c	c	c	c	c	c	c	c	c	100
05/01/25	c	c	c	s	s	s	c	c	c	c	s	s	c	c	c	c	c	c	c	c	c	c	c	c	c	100
04/01/25	c	s	c	s	c	c	c	c	s	s	c	c	c	c	c	s	c	s	c	s	c	c	c	c	s	100
03/01/25	c	s	c	c	c	c	c	c	s	c	c	s	c	c	c	c	c	c	c	c	c	c	c	c	c	100
02/01/25	s	c	c	c	c	c	c	c	c	c	c	c	c	c	s	c	c	c	c	c	c	c	s	c	c	100
01/01/25	c	c	s	s	s	s	c	c	c	c	c	c	c	s	c	c	c	c	c	c	c	c	c	c	c	100
31/12/24	c	c	c	s	c	c	c	c	c	c	c	c	c	c	s	c	c	c	c	c	c	c	c	c	c	100
30/12/24	s	c	c	c	c	c	c	c	c	s	c	c	c	c	c	c	c	c	c	c	c	c	c	c	c	100
29/12/24	c	c	c	c	c	c	c	c	c	c	c	c	c	s	c	c	c	c	c	c	c	c	c	c	c	100
28/12/24	s	c	s	s	c	s	c	c	c	c	c	c	c	c	c	s	c	c	c	c	c	c	s	c	c	100
27/12/24	c	c	c	s	c	c	c	c	c	c	c	s	c	c	c	c	c	c	c	c	c	c	c	c	c	100
26/12/24	c	c	c	c	c	c	c	c	c	c	c	c	c	c	c	c	c	c	c	c	c	c	c	c	c	100
25/12/24	c	s	c	c	c	c	s	s	c	c	c	s	c	c	c	c	s	s	c	c	c	c	c	c	c	100
24/12/24	c	c	c	c	c	c	c	s	c	c	c	s	s	c	c	c	c	c	c	c	c	c	c	c	c	100
23/12/24	c	c	s	c	c	c	s	s	c	c	c	c	s	c	c	c	c	c	c	c	c	c	c	c	c	100
22/12/24	c	c	s	c	c	c	c	c	c	c	c	c	c	c	c	c	s	c	s	c	c	c	c	c	c	100
21/12/24	c	c	c	c	c	c	c	c	c	c	c	c	c	s	c	c	c	c	c	c	c	c	c	c	c	100
20/12/24	c	c	c	c	c	c	c	s	c	c	c	c	c	c	c	c	c	c	c	c	c	s	c	c	c	100
19/12/24	s	s	s	s	s	c	c	c	c	c	c	c	c	c	c	s	s	s	s	c	c	c	c	c	c	100
18/12/24	c	c	s	s	s	s	c	c	c	c	c	c	c	c	c	c	c	c	c	c	c	s	s	s	s	100
17/12/24	c	c	c	c	c	c	c	c	c	c	c	c	c	c	c	c	c	c	c	c	c	c	c	c	s	100
16/12/24	c	c	c	c	c	c	c	c	c	c	c	c	c	c	c	c	c	c	c	c	c	c	c	c	c	100
15/12/24	c	c	c	c	c	c	c	c	c	s	c	c	c	c	c	c	c	c	c	c	c	c	c	c	c	100
14/12/24	c	c	c	c	c	c	c	c	c	c	c	c	c	c	c	c	c	c	c	c	c	c	c	c	c	100
13/12/24	c	c	c	c	c	c	c	c	c	c	c	s	c	c	c	c	c	c	c	c	c	c	c	c	c	100
12/12/24	c	c	c	c	c	c	c	c	c	c	c	c	c	c	c	c	c	c	c	c	s	c	c	m	c	99
11/12/24	c	c	c	c	c	c	c	c	c	c	c	c	c	c	c	m	0	0	0	s	c	c	c	c	c	99

Error Report [+] Expand

10 entries per page Search:

Showing 1 to 2 of 2 entries « < 1 > »

RAL-LCG2_MCORE

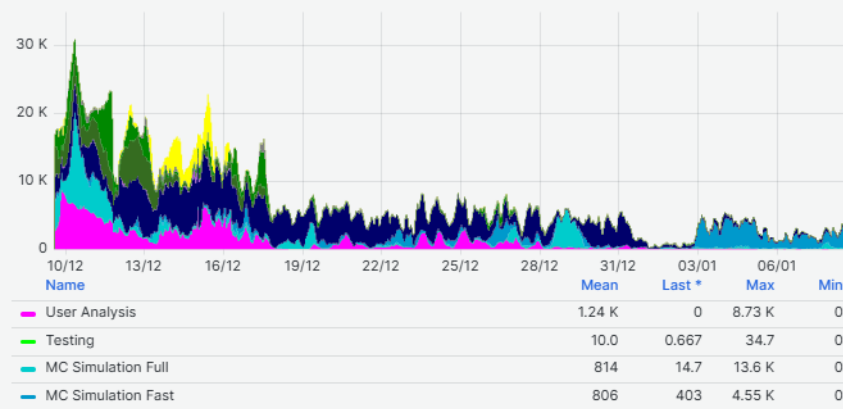
1184 (functional) -... 1283 (functional) -...

Template: 1184 (functional) - PFT mc15 Sim tf 21.0.15 FC

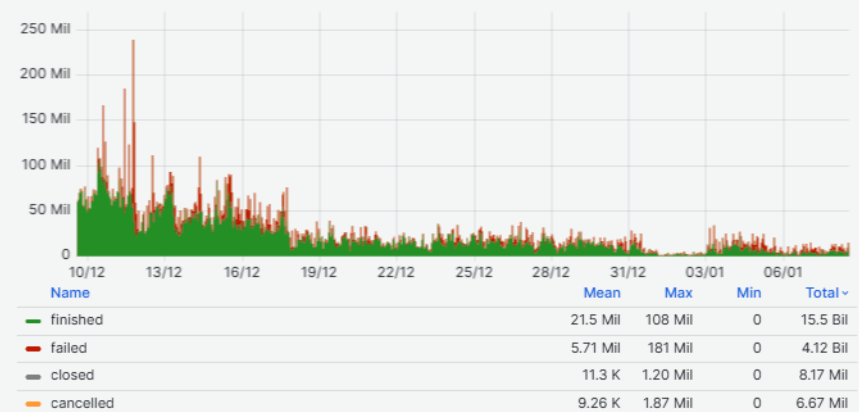
Time	0	1	2	3	4	5	6	7	8	9	10	11	12	13	14	15	16	17	18	19	20	21	22	23	Eff[%]	
08/01/25	s	m	s	s	c	c	s	s	s	s	s	s	s	c	c	c	c	s	m	0	0	0	0	0	0	92
07/01/25	s	f	s	m	s	f	f	s	s	c	s	s	s	c	f	f	s	s	s	c	c	s	s	s	s	65
06/01/25	s	s	s	s	s	s	s	s	s	c	c	s	s	s	f	s	s	m	s	s	c	c	s	s	f	79
05/01/25	s	s	s	s	s	s	s	s	s	s	s	s	s	s	f	c	s	c	f	s	s	s	s	s	f	50
04/01/25	s	c	s	c	s	s	s	s	s	f	c	s	s	c	s	f	c	s	s	s	s	c	c	s	m	69
03/01/25	s	s	s	s	s	c	s	s	s	f	f	s	s	c	s	m	s	c	s	s	s	s	m	f	f	58
02/01/25	s	s	s	f	c	s	s	f	f	s	s	c	s	s	s	f	c	s	s	f	c	s	s	s	c	72
01/01/25	f	s	s	s	s	s	s	s	s	c	m	s	s	s	s	c	s	s	f	c	c	c	s	f	c	70
31/12/24	s	c	s	s	s	f	s	s	s	f	c	s	s	s	f	s	c	s	s	s	c	f	s	c	s	79
30/12/24	s	s	s	s	s	s	c	s	s	s	f	s	s	s	c	s	f	f	s	s	s	s	c	s	s	60
29/12/24	s	s	s	s	s	s	s	s	s	f	c	s	s	s	s	s	c	c	s	c	s	s	s	s	s	70
28/12/24	s	s	s	s	s	s	s	s	s	c	s	c	c	s	c	s	s	s	s	c	s	s	s	s	f	80
27/12/24	s	c	s	c	s	s	s	c	s	s	c	s	s	s	c	f	f	s	s	f	c	s	s	s	c	76
26/12/24	s	c	c	c	s	s	s	c	c	c	c	s	s	f	s	s	s	c	f	s	s	m	c	c	c	77
25/12/24	s	s	s	s	c	s	s	s	s	s	s	s	s	s	c	s	s	s	s	s	c	s	s	s	c	95
24/12/24	s	s	s	s	s	s	s	s	s	c	c	s	s	f	f	c	c	s	s	c	s	c	c	c	s	87
23/12/24	f	s	s	s	s	s	c	s	s	c	s	s	s	s	s	c	s	s	s	s	s	s	s	s	s	86
22/12/24	s	s	s	f	s	s	s	c	s	s	c	s	s	s	f	s	c	s	c	s	c	s	s	s	f	77

Site Dashboard: https://monit-grafana.cern.ch/d/D26vElGGz/site-oriented-dashboard?orgId=17&var-bin=1h&var-groupby_jobs=adactivity&var-groupby_ddm=activity&var-cloud=All&var-country=All&var-federation=All&var-site=RAL-LCG2&var-computingsite=All&var-jobtype=All&var-es_division_factor=1&var-measurement=ddm_transfer_1h

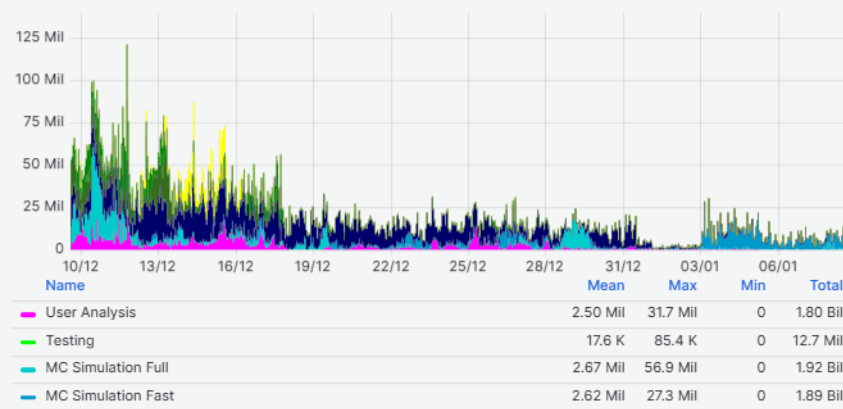
Slots of Running jobs



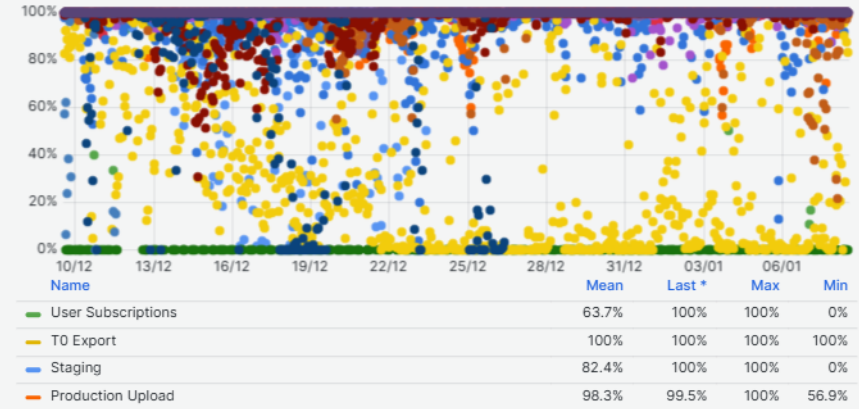
WallClock Consumption of Successful and Failed Jobs - Time Stacked Bar Graph



CPU Consumption: All jobs in Seconds



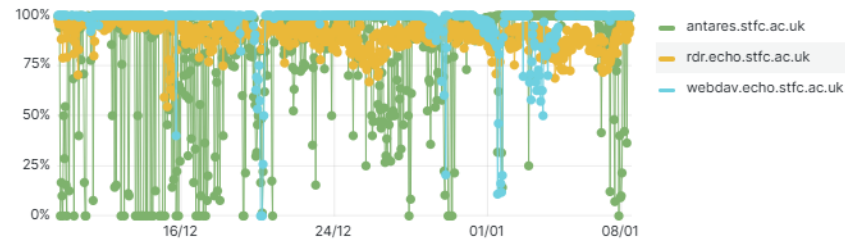
Transfer Efficiency



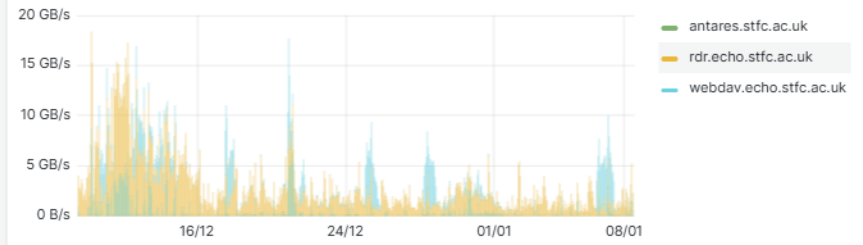
Transfer Rates

<https://tinyurl.com/RAL-Ingest-FTS>

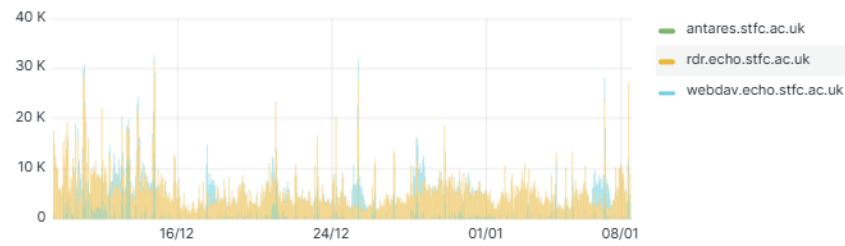
Efficiency



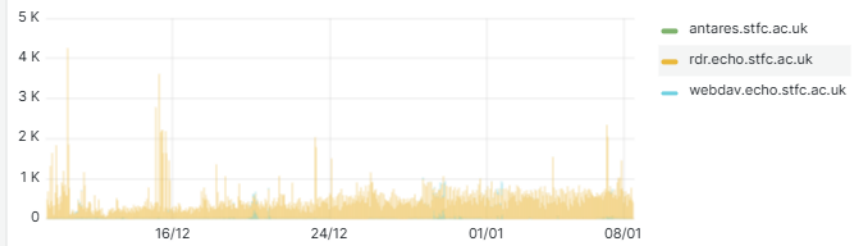
Transfer Throughput



Transfer Successes

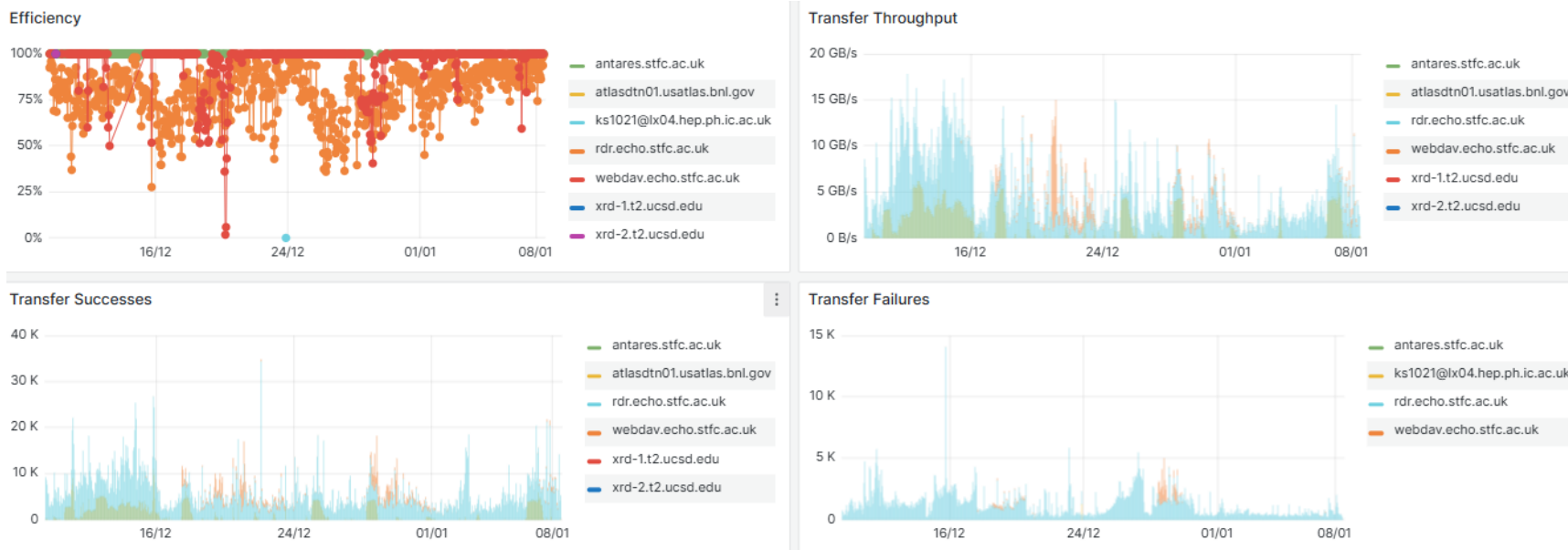


Transfer Failures



RECALL

<https://tinyurl.com/RAL-recall>



LHCB: https://monit-grafana.cern.ch/d/000000619/wlwg-sitemon-historical-profiles?orgId=20&from=now-30d&to=now&var-vo=lhcb&var-profile=LHCB_CRITICAL&var-dst_tier=1&var-dst_country=UK&var-dst_federation=All&var-dst_experiment_site=LCG.RAL.uk&var-service_flavour=ARC-CE&var-dst_hostname=All&var-recomputation=status

```

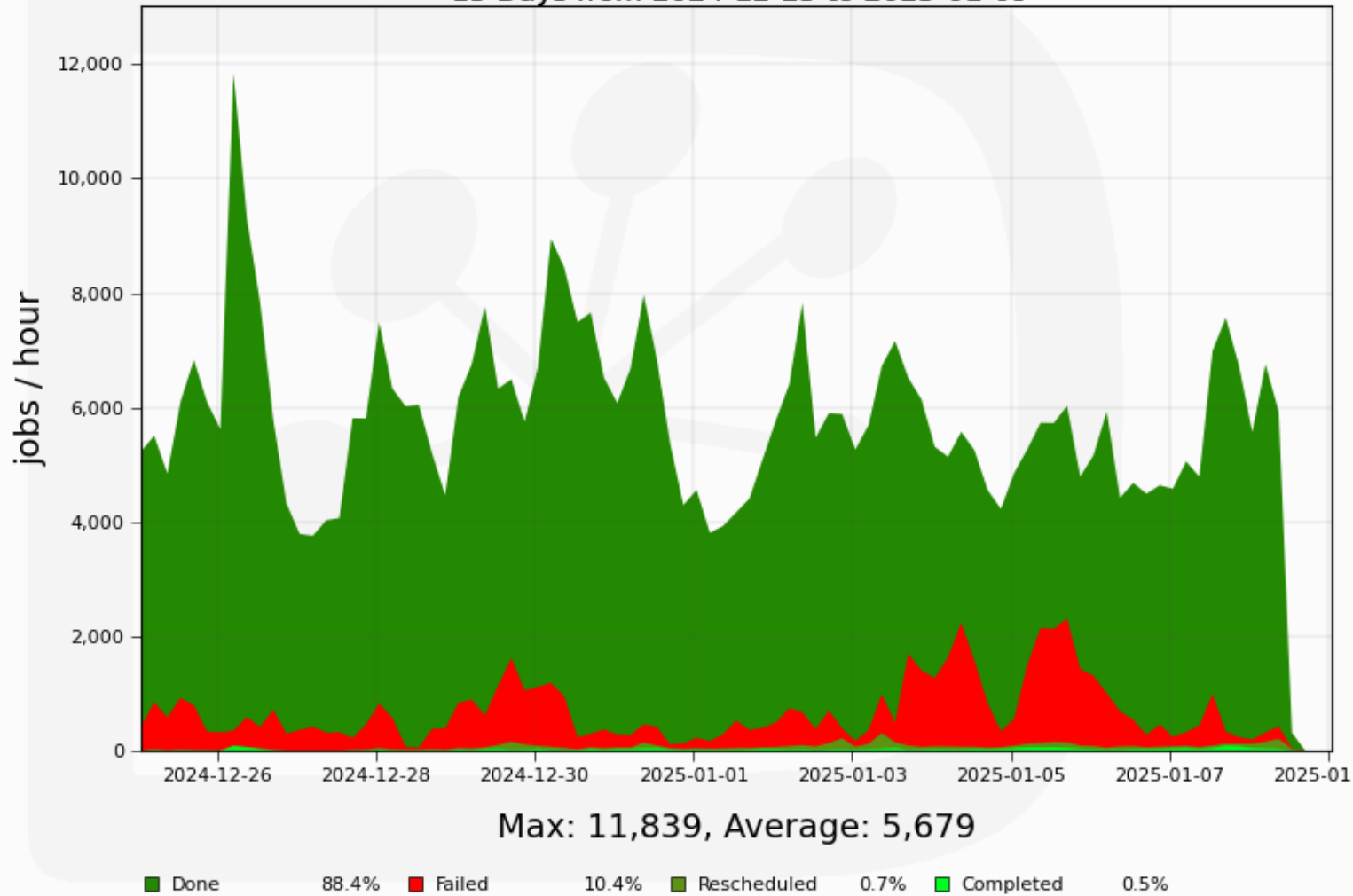
[LCG.RAL.uk] [ARC-CE-HTTPS] [arc-ce-test02.gridpp.rl.ac.uk] lhcb:
[LCG.RAL.uk] [ARC-CE-HTTPS] [arc-ce01.gridpp.rl.ac.uk] lhcb:
[LCG.RAL.uk] [ARC-CE-HTTPS] [arc-ce02.gridpp.rl.ac.uk] lhcb:
[LCG.RAL.uk] [ARC-CE-HTTPS] [arc-ce03.gridpp.rl.ac.uk] lhcb:
[LCG.RAL.uk] [ARC-CE-HTTPS] [arc-ce04.gridpp.rl.ac.uk] lhcb:
[LCG.RAL.uk] [ARC-CE-HTTPS] [arc-ce05.gridpp.rl.ac.uk] lhcb:
[LCG.RAL.uk] [HTTP] [antares.stfc.ac.uk] lhcb:
[LCG.RAL.uk] [HTTP] [webdav.echo.stfc.ac.uk] lhcb:
[LCG.RAL.uk] [XROOTD] [antares.stfc.ac.uk] lhcb:

```

Jobs:

Jobs by FinalMajorStatus

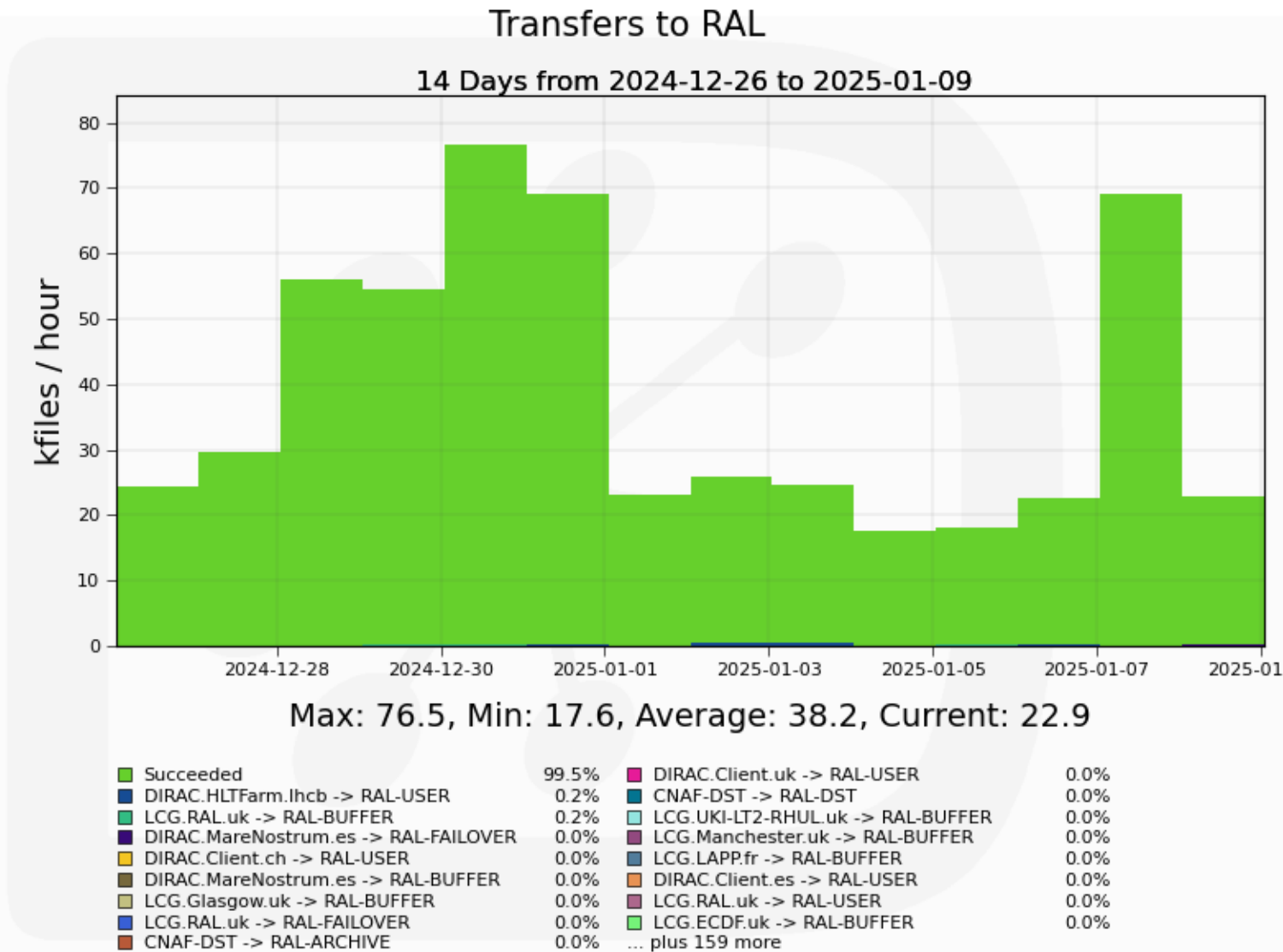
15 Days from 2024-12-25 to 2025-01-09



Max: 11,839, Average: 5,679

Generated on 2025-01-08 12:53:44 UTC

Transfers to RAL:

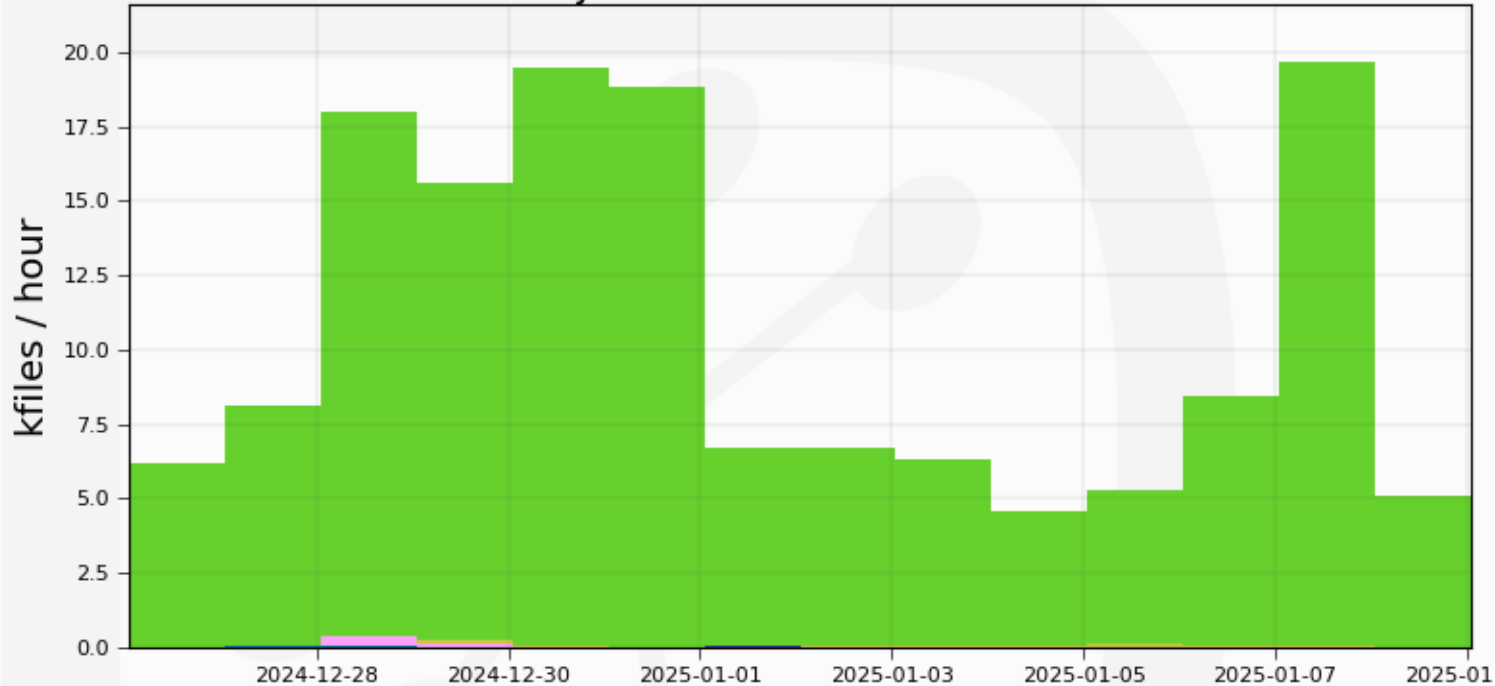


Generated on 2025-01-08 12:03:01 UTC

Transfers from RAL:

Transfers from RAL

14 Days from 2024-12-26 to 2025-01-09



Max: 19.6, Min: 4.60, Average: 10.6, Current: 5.07

■ Succeeded	99.2%	■ RAL-DST -> CNAF-ARCHIVE	0.0%
■ RAL-BUFFER -> LCG.RAL.uk	0.3%	■ RAL-DST -> CNAF-DST	0.0%
■ RAL-FAILOVER -> CNAF-BUFFER	0.3%	■ RAL-USER -> LCG.GRIDKA.de	0.0%
■ RAL-USER -> DIRAC.Client.ch	0.1%	■ RAL-USER -> DIRAC.Client.cn	0.0%
■ RAL-USER -> DIRAC.Client.uk	0.0%	■ RAL_MC-DST -> LCG.RAL.uk	0.0%
■ RAL-USER -> LCG.RAL.uk	0.0%	■ RAL_MC-DST -> CNAF_MC-DST	0.0%
■ RAL-BUFFER -> DIRAC.HLTfarm.lhcb	0.0%	■ RAL-USER -> LCG.CERN.cern	0.0%
■ RAL-FAILOVER -> CNAF-DST	0.0%	■ RAL-USER -> LCG.CNAF.it	0.0%
■ RAL-USER -> DIRAC.Client.es	0.0%	... plus 110 more	

Generated on 2025-01-08 12:03:03 UTC

<https://tinyurl.com/aliceRALstorage>

Disk storage elements																							
RAL																							
AllEn SE		Catalogue statistics (1024-base units)							Storage-provided information (1024-base units)					Functional tests				Last day add tests		Demotion	IPv6		
SE Name	AllEn name	Tier	Size	Used	Free	Usage	No. of files	Type	Size	Used	Free	Usage	Version	EOS Version	add	get	rm	3rd	Last OK add	Successful	Failed	factor	add
1. RAL - CEPH	ALICE::RAL::CEPH	1	2 PB	1.246 PB	771.6 TB	62.32%	14,744,358	CEPH	2 PB	0	2 PB	-	Xrootd v5.7.0						08.01.2025 12:59	24	0		0
Total			2 PB	1.246 PB	771.6 TB		14,744,358		2 PB	0	2 PB				1	1	1	1					1

What is this about?

Custodial storage elements																								
RAL																								
AllEn SE			Catalogue statistics (1024-base units)					Storage-provided information (1024-base units)						Functional tests				Last day add tests		Demotion	IPv6			
SE Name	AllEn name	Tier	Size	Used	Free	Usage	No. of files	Type	Size	Used	Free	Usage	Version	EOS Version	add	get	rm	3rd	Last OK add	Successful	Failed	factor	add	
1. RAL - CTA	ALICE::RAL::CTA	1	2.726 PB	1.49 PB	1.236 PB	54.67%	659,451	TAPE	209.5 TB	6.766 TB	202.7 TB	3.23%	Xrootd 5.6.10-1.el9.x86_64						08.01.2025 13:46	24	0		0	Test...
2. RAL - CTA_TEST	ALICE::RAL::CTA_TEST	1	1000 GB	0	1000 GB	-	0	TAPE	1000 GB	765.7 MB	999.3 GB	0.075%	Xrootd 5.6.10-1.el9.x86_64						08.01.2025 13:49	24	0		0	Test...
Total			2.727 PB	1.49 PB	1.237 PB		659,451		210.5 TB	6.767 TB	203.7 TB				2	2	2	2					0	