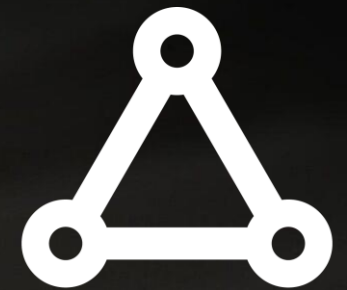


EMR organization & progress

Facility Infrastructure & civil engineering

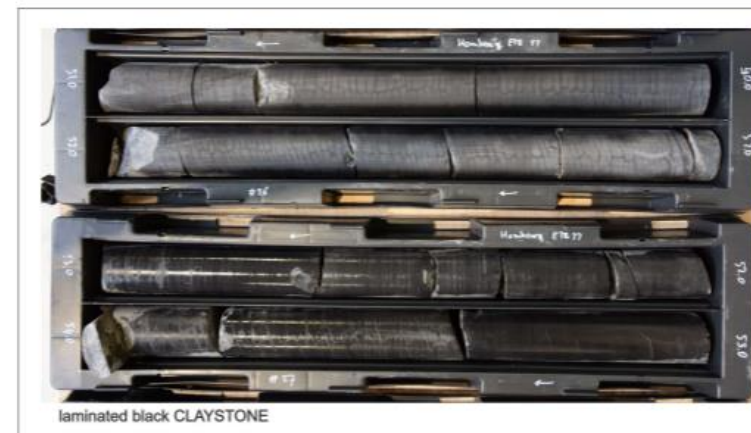
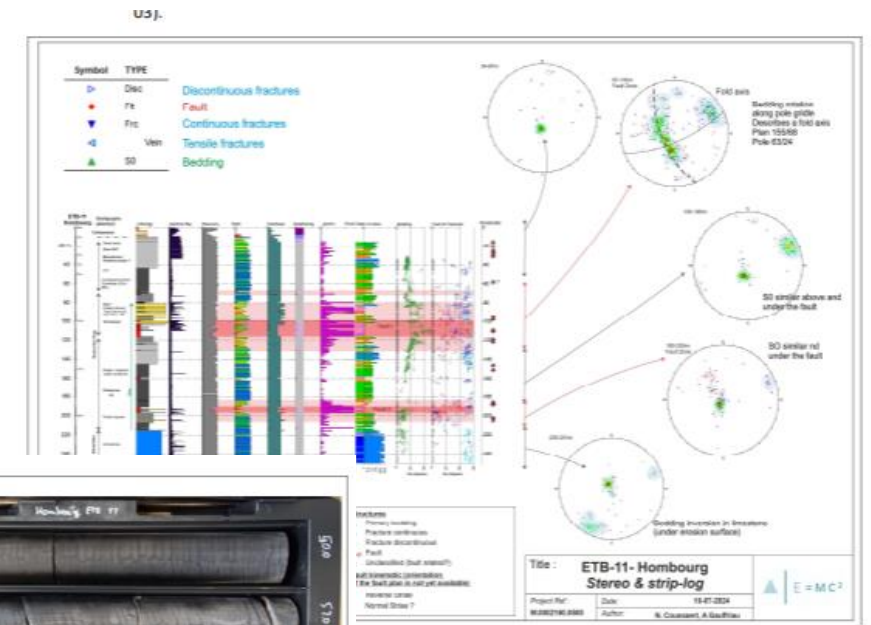


Einstein
Telescope

CERN - 14/01/2025

Defining subsoil conditions

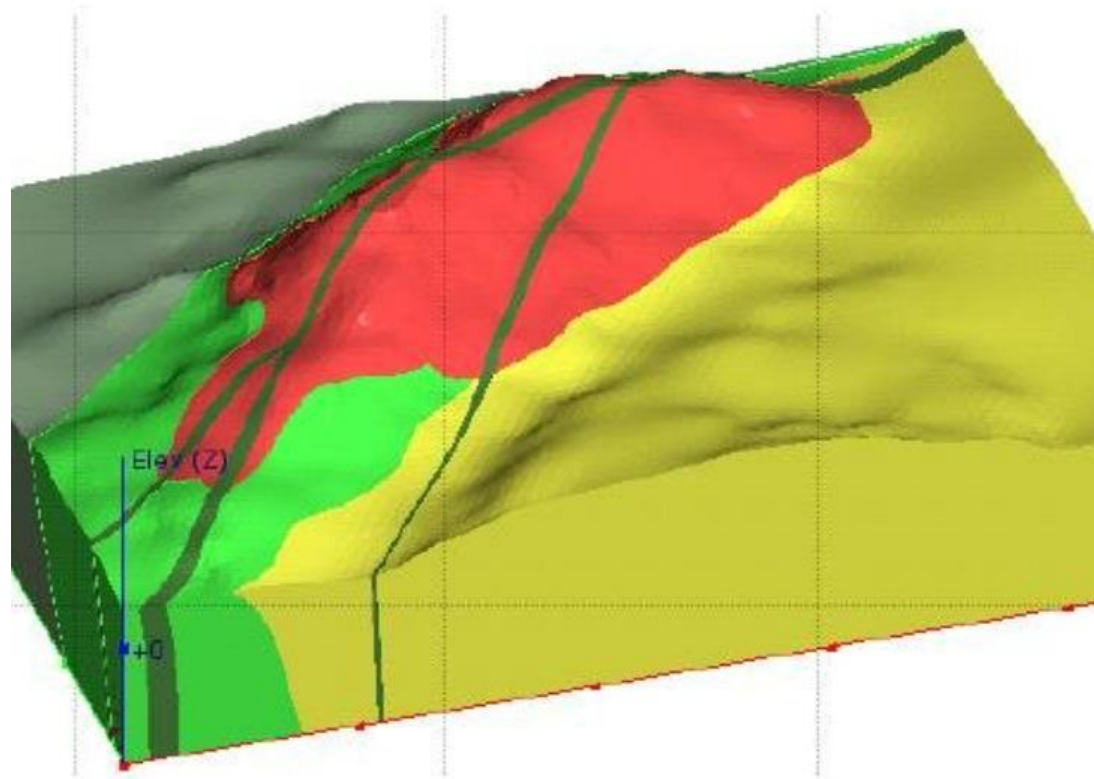
- △ First drilling campaign: Geotechnical core logging, still ongoing (7 from 11 reports ready)
- △ Establish geotechnical criteria methodology
- △ Launching seismic/noise campaign
- △ Launching second drilling campaign



patterns of each tectonic domains toward depth



Evaluating subsoil conditions = basis for civil



△ Converting data into a geotechnical model, data from first boreholes used = **ongoing**

△ Starting with a comprehensive 3D model in LEAPFROG, incorporating data from hydro-geological, geological and studies on noise



First steps – Facility Infrastructure & civil eng.

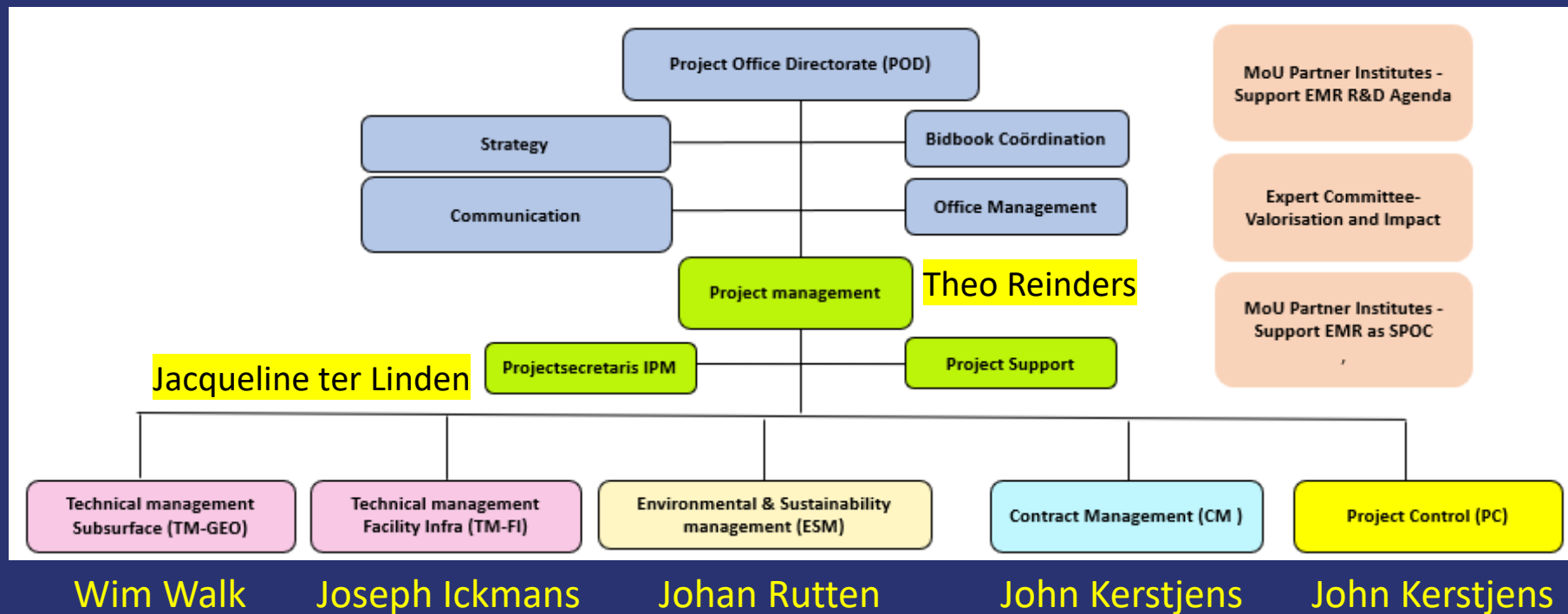
- △ Defining activities necessary for feasibility & bid book
- △ Establish risk management / mitigation approach and introduction into systems engineering
- △ Review of the available geological and geotechnical data
- △ Preliminary survey on construction logistics and impact on the region
- △ Identifying aspects having potential impact on civil engineering
- △ Establish contacts with stakeholders and coordinating alignment with ETO → basis of design



September 2024

△ Full IPM project organization established → addition of manager environment, manager Facility Infrastructure (civil engineering) and office manager

Theo Reinders replaces Guid Bartholomée as Project Manager



Approach Facility Infrastructure (civil eng.)

△ Focus on:

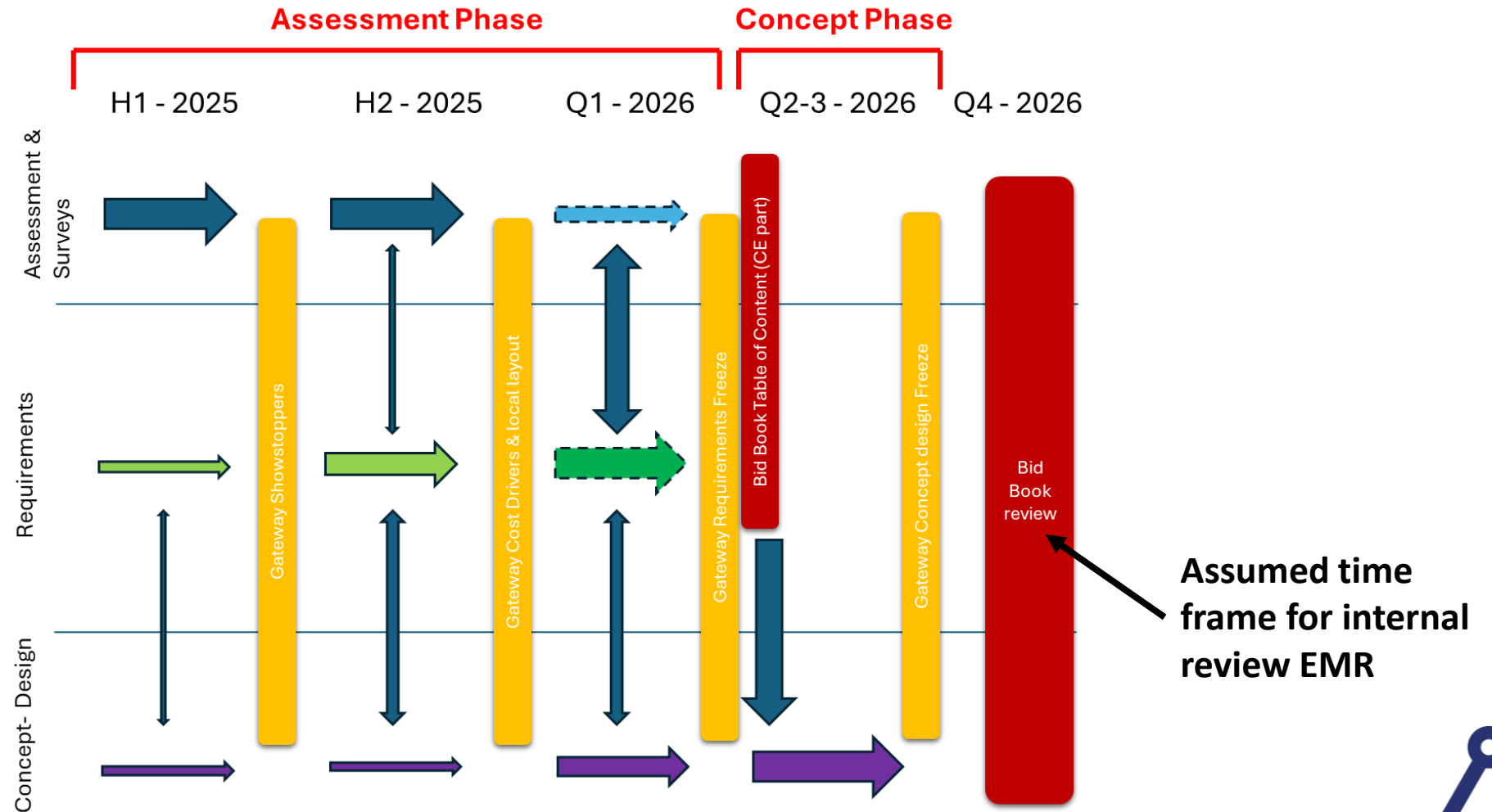
- Alignment with ETO/ETC and stakeholders → fixation starting points & criteria (**alignment with detector specialists & minimize rework**)
- Organize feasibility studies & necessary input for bid book

△ 3 phases:

- Concept phase: Currently in finalization: establish roadmap (showstoppers/cost drivers/risks → priorities) & mobilizing full team on all relevant disciplines
- Assessment phase: 2 parallel actions resulting in a basis for bid book
 - Design concept scenarios (expert judgement) for the relevant disciplines → modular approach
 - Converging design criteria together with ETO/ETC and other stakeholders (local)
- Concept design phase: after fixation of main starting points (ETO & stakeholders), finalize concept design and provide input on bid book



Timing Facility Infrastructure (only triangle)



Q&A

You have Questions We have Answers

